

B100-302 Nestle® Baby Ruth®



Issue Date:	2/15/2017	Revision:	A
-------------	-----------	-----------	---

PRODUCT DESCRIPTION	
Fudge center component covered with caramel and peanuts and enrobed with a compound coating.	

PHYSICAL ATTRIBUTES								
Appearance:	Enrobed coating surface completely covering a fudge center that is enrobed with caramel and peanuts.							
Color:	Rich chocolate color, caramel color, and light tan fudge							
Flavor:	Blend of caramel, fudge, and fresh roasted peanuts.							
Texture:	Soft fudge and caramel finished component with crunchy peanuts.							
Pack Size:	1x30lb poly-lined corrugated case.							
Case Dimensions:								
L[depth]xWxH in.	12.7	10.6	12.4	Case Cube(ft ³):	0.9660	Pallet Conf. (TI / HI)	12	5

INGREDIENTS	
SUGAR, ROASTED PEANUTS, CORN SYRUP, HYDROGENATED PALM KERNEL AND COCONUT OIL, NONFAT MILK, COCOA, HIGH FRUCTOSE CORN SYRUP, GLYCERIN, AND LESS THAN 1% OF DEXTROSE, DAIRY PRODUCT SOLIDS, SALT, NATURAL FLAVOR, SOY LECITHIN, SOYBEAN OIL, CARRAGEENAN, TBHQ AND CITRIC ACID (TO PRESERVE FRESHNESS), LACTIC ACID ESTERS.	
ALLERGENS:	CONTAINS: PEANUT, MILK AND SOY

Cornstarch is used as a processing aid.

NUTRITIONAL INFORMATION	
NUTRIENT	Per 100g
CALORIES	451.0
CALORIES FROM FAT	194.1
TOTAL FAT (g)	21.5
SATURATED FAT (g)	0.88
TRANS FAT (g)	0.03
CHOLESTROL (mg)	0.31
SODIUM (mg)	234.1
TOTAL CARBOHYDRATE (g)	62.9
DIETARY FIBER (g)	2.2
SUGARS (g)	51.3
PROTEIN (g)	6.4
VITAMIN A (IU)	1.02
VITAMIN C (mg)	0.21
CALCIUM (mg)	51.5
IRON (mg)	1.1



Nutrition Facts	
Serving Size 2 Tbsp (23.56g)	
Servings Per Container about 567	
Amount Per Serving	
Calories 110	Calories from Fat 45
% Daily Value*	
Total Fat 5g	8%
Saturated Fat 3g	15%
Trans Fat 0g	
Cholesterol 0mg	0%
Sodium 70mg	3%
Total Carbohydrate 15g	5%
Dietary Fiber	
Sugars 13g	
Protein 1g	
Vitamin A 0%	Vitamin C 0%
Calcium 0%	Iron 0%
* Percent Daily Values are based on a 2,000 calorie diet. Your daily values may be higher or lower depending on your calorie needs.	
	Calories: 2,000 2,500
Total Fat	Less than 65g 80g
Saturated Fat	Less than 20g 25g
Cholesterol	Less than 300mg 300mg
Sodium	Less than 2,400mg 2,400mg
Total Carbohydrate	300g 375g
Dietary Fiber	25g 30g

Brand Name:	TR Toppers	Net Weight: (Lbs.)	30.00
		Net Weight: (Kg.)	13.61
Case GTIN	0 06 51844 10014 4	Gross Weight: (Lbs.)	32.00
Kosher	Star-D	Gross Weight: (Kg.)	14.52
Metal Detection	1.5mm Ferrous	1.8mm Non-Ferrous	2.0mm SS316
Country of Origin	USA	Density (lbs/gal)	6.70

MICROBIOLOGICAL ATTRIBUTES	
Attributes	Limits
Total Aerobic Plate Count (cfu/g)	<10,000
Yeast and Mold (cfu/g)	<100
Coliforms (cfu/g)	<10
E. coli (MPN/g)	Negative
Salmonella (/375g)	Negative

GMO STATEMENT	
X	Produced with Genetic Engineering.
	Partially Produced with Genetic Engineering.
	May be produced with Genetic Engineering.
	NOT Produced with Genetic Engineering.

STORAGE CONDITIONS	
Recommended Condition:	Best kept frozen ($\leq 0^{\circ}\text{F}$).
Alternate Condition:	May be refrigerated ($\leq 40^{\circ}\text{F}$).
Alternate Condition:	N/A

SHIPPING CONDITIONS	
Recommended Condition:	May be shipped frozen ($\leq 0^{\circ}\text{F}$).
Alternate Condition:	May be shipped refrigerated ($\leq 40^{\circ}\text{F}$).
Alternate Condition:	N/A

SHELF LIFE	
Recommended Shelf Life:	9 months at recommended frozen storage conditions.
Alternate Shelf Life:	6 months at refrigerated storage conditions.
Alternate Shelf Life:	3 months at ambient storage conditions.

ALLERGEN / SENSATIZER TABLE			
COMPONENT	PRESENT IN PRODUCT	PRESENT IN PRODUCTS MANUFACTURED ON THE SAME LINE	PRESENT IN THE SAME MANUFACTURING PLANT
PEANUTS AND DERIVATIVES	YES	YES	YES
TREE NUTS AND DERIVATIVES	NO	YES	YES
EGG AND DERIVATIVES	NO	YES	YES
MILK AND DERIVATIVES	YES	YES	YES
SOY AND DERIVATIVES	YES	YES	YES
WHEAT	NO	YES	YES
FISH (SPECIFY SPECIES)	NO	NO	NO
CRUSTACEAN SHELLFISH (SPECIFY)	NO	NO	NO
SULFITES > 10 ppm	NO	YES	YES
MUSTARD	NO	NO	NO
SESAME	NO	NO	NO
GLUTEN	NO		
PARTIALLY HYDROGENATED OILS	YES		
ARTIFICIAL FLAVOR SOURCE	NO		
FD&C ARTIFICIAL COLORS	NO		

GRANULATION										
Sieve Size	3/4"	1/4"	#12	Pan						
Range (%)	0 - 1	17.1 - 36.8	44.5 - 54.3	15.3 - 31.8						

CODE FORMAT	
Case Code - Left Side: JJJYL, Time, Product Code	EXAMPLE: 25811 15:32 B100-302 JJJ = Production Julian Date 258 = September 15; Y = Last Digit of Year 1 = 2011; L = Line (Numeric) 1 = Line 1; Time: HH:MM 15:32 = 3:32 p.m. Product Code = (e.g. B100-302)
Case Code - Right Side: JJJYL, Time, Product Code	
Pallet Markings: JJY, Pallet #, Product Code	

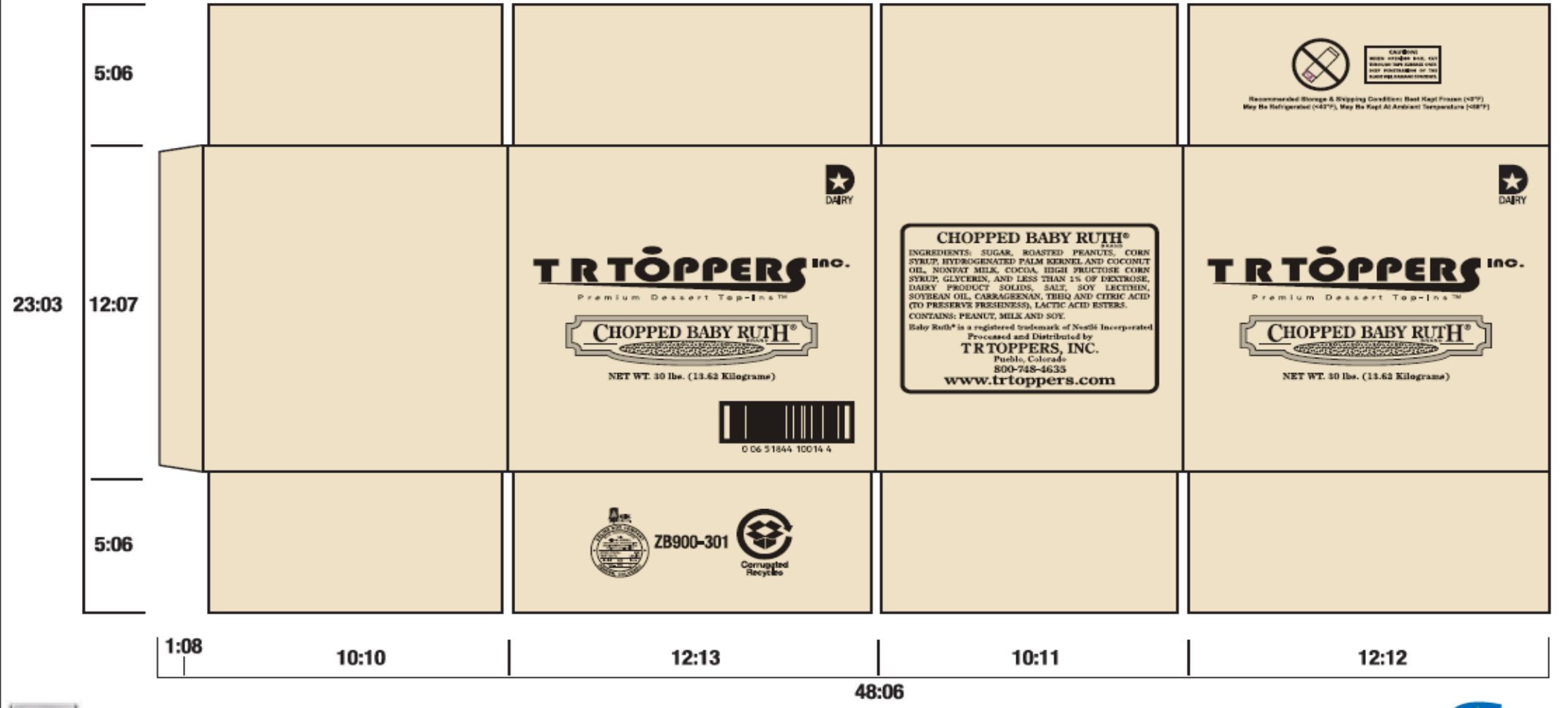
LABEL / CASE GRAPHICS

PRINT DIE #: T-177

DELINE BOX CO. PRINT SPECIFICATION

DATE: 12/03/15 DOCKET #: 99754 FILE #: 81250 PRINT DIRECTION: 95.84 (%) RSC (X) DIE CUT ()
 CUST. NAME: TR Toppers LPI: PLATE TYPE: .250
 JOB DESCRIPTION: 30LB Baby Ruth ZB900-301 NUMBER ON: 1 ACROSS: 1 AROUND: 1
 CAD #: CUSTOMER #: 4914 TEST: 44 ECT FLUTE: C
 BAR CODE #: 00651844100144 LWR: BOX SIZE: 12:10 x 10:08 x 12:01 SHEET SIZE: 23:03 x 48:06
 PRINT DIE #: T-177 STEEL RULE DIE #: CYL. REPEAT: 41" PRESS: EMBA (Plates From 37 FX)

COLOR ROTATION:					
	COLOR	NUMBER	FORMULA	DENSITY	ANILOX
(FIRST PASS)	1.	90 Black			
	2.				
	3.				
	4.				
	5.				



 790 Umatilla St. • Denver, CO 80204
 P: 303-595-3663 • F: 720-384-0633
 TF: 1-800-440-5188
www.pepperdines.com

REORDER NUMBER: **PROOF - 99754**
 THIS MASTER SHOULD NOT BE FOLLOWED
 FOR EXACT SIZE OR COLOR.

DATE 12/03/15

 **DELINE**
 BOX CO.
 DENVER, CO

