

C285-100 Kellogg® Cookies n Cream



Issue Date:	2/15/2017	Revision:	A
-------------	-----------	-----------	---

PRODUCT DESCRIPTION	
Varying sized pieces of chopped premium sandwich cookies.	

PHYSICAL ATTRIBUTES								
Appearance:	Irregular pieces varying in size and shape.							
Color:	Dark chocolate brown cookie base with white cream filling.							
Flavor:	Base has typical chocolate character with a sweet flavored filling.							
Texture:	Cookie base is crunchy with soft creamy filling.							
Pack Size:	4x2.5lb bags							
Case Dimensions:								
L[depth]xWxH in.	7	14.5	6	Case Cube(ft ³):	0.3524	Pallet Conf. (TI / HI)	15	10

INGREDIENTS	
SUGAR, ENRICHED FLOUR (WHEAT FLOUR, NIACIN, REDUCED IRON, THIAMIN MONONITRATE [VITAMIN B1], RIBOFLAVIN [VITAMIN B2], FOLIC ACID), SOYBEAN AND PALM OIL WITH TBHQ FOR FRESHNESS, COCOA PROCESSED WITH ALKALI, INVERT SUGAR, CONTAINS TWO PERCENT OR LESS OF DEGERMINATED YELLOW CORN FLOUR, CORNSTARCH, CHOCOLATE, SALT, LEAVENING (BAKING SODA, MONOCALCIUM PHOSPHATE), ARTIFICIAL FLAVOR, SOY LECITHIN, WHEY.	
ALLERGENS:	CONTAINS: WHEAT, MILK AND SOY.

NUTRITIONAL INFORMATION	
NUTRIENT	Per 100g
CALORIES	471
CALORIES FROM FAT	170
TOTAL FAT (g)	18.9
SATURATED FAT (g)	6.5
TRANSFAT (g)	0.26
CHOLESTROL (mg)	0.0
SODIUM (mg)	453
TOTAL CARBOHYDRATE (g)	72.0
DIETARY FIBER (g)	2.8
SUGARS (g)	40.0
PROTEIN (g)	5.0
VITAMIN A (IU)	8
VITAMIN C (mg)	0
CALCIUM (mg)	25.1
IRON (mg)	3.7



Nutrition Facts	
Serving Size 2 Tbsp (14.54g)	
Servings Per Container about 302	
Amount Per Serving	
Calories 70	Calories from Fat 25
% Daily Value*	
Total Fat 2.5g	4%
Saturated Fat 1g	5%
Trans Fat 0g	
Cholesterol 0mg	0%
Sodium 65mg	3%
Total Carbohydrate 10g	3%
Dietary Fiber 0g	0%
Sugars 6g	
Protein <1g	
Vitamin A 0%	Vitamin C 0%
Calcium 0%	Iron 2%
* Percent Daily Values are based on a 2,000 calorie diet. Your daily values may be higher or lower depending on your calorie needs:	
	Calories: 2,000 2,500
Total Fat	Less than 65g 80g
Saturated Fat	Less than 20g 25g
Cholesterol	Less than 300mg 300mg
Sodium	Less than 2,400mg 2,400mg
Total Carbohydrate	300g 375g
Dietary Fiber	25g 30g

Brand Name:	TR Toppers	Net Weight: (Lbs.)	10.00
		Net Weight: (Kg.)	4.54
Case GTIN	0 06 51844 10005 2	Gross Weight: (Lbs.)	11.00
Kosher	Star-D	Gross Weight: (Kg.)	4.99
Metal Detection	1.5mm Ferrous	1.8mm Non-Ferrous	2.0mm SS316
Country of Origin	USA	Density (lbs/gal)	4.29

MICROBIOLOGICAL ATTRIBUTES	
Attributes	Limits
Total Aerobic Plate Count (cfu/g)	<10,000
Yeast and Mold (cfu/g)	<100
Coliforms (cfu/g)	<10
E. coli (/g)	Negative
Salmonella (/375g)	Negative
Staphylococcus (coag.)	Negative
L. Monocytogenes	Negative

GMO STATEMENT	
X	Produced with Genetic Engineering.
	Partially Produced with Genetic Engineering.
	May be produced with Genetic Engineering.
	NOT Produced with Genetic Engineering.

STORAGE CONDITIONS	
Recommended Condition:	Best kept ambient ($\leq 100F^{\circ}$).
Alternate Condition:	N/A
Alternate Condition:	N/A

SHIPPING CONDITIONS	
Recommended Condition:	May be shipped at ambient ($\leq 100F^{\circ}$).
Alternate Condition:	May be shipped on refer or freezer truck.
Alternate Condition:	N/A

SHELF LIFE	
Recommended Shelf Life:	8 months at recommended storage conditions.
Alternate Shelf Life:	60 days once opened.
Alternate Shelf Life:	N/A

ALLERGEN / SENSATIZER TABLE			
COMPONENT	PRESENT IN PRODUCT	PRESENT IN PRODUCTS MANUFACTURED ON THE SAME LINE	PRESENT IN THE SAME MANUFACTURING PLANT
PEANUTS AND DERIVATIVES	NO	NO	YES
TREE NUTS AND DERIVATIVES	NO	NO	YES
EGG AND DERIVATIVES	NO	NO	YES
MILK AND DERIVATIVES	YES	YES	YES
SOY AND DERIVATIVES	YES	YES	YES
WHEAT	YES	YES	YES
FISH (SPECIFY SPECIES)	NO	NO	NO
CRUSTACEAN SHELLFISH (SPECIFY)	NO	NO	NO
SULFITES > 10 ppm	NO	YES	YES
MUSTARD	NO	NO	NO
SESAME	NO	NO	NO
GLUTEN	YES		
PARTIALLY HYDROGENATED OILS	None		
ARTIFICIAL FLAVOR SOURCE	Vanillin		
FD&C ARTIFICIAL COLORS	None		

GRANULATION										
Sieve Size	3/4"	1/4"	#12	Pan						
Range (%)	0 - 0.7	28.7 - 74.9	18.7 - 49.6	0.5 - 27.5						

CODE FORMAT	EXAMPLE: 25811 15:32 C285-100
Case Code - Left Side: JJYL, Time, Product Code, PCO	JJJ = Production Julian Date 258 = September 15; Y = Last Digit of Year 1 = 2011; L = Line (Numeric) 1 = Line 1; Time: HH:MM 15:32 = 3:32 p.m. Product Code = (e.g. C285-100)
Case Code - Right Side: JJYL, Time, Product Code, PCO	
Pallet Markings: JJY, Pallet #, Product Code	

EP-266

PRINT DIE #: T-219

DELINE BOX CO. PRINT SPECIFICATION

DATE: 02/17/16 DOCKET #: 105090 FILE #: 80702 PRINT DIRECTION: 1 96.25 (%) RSC (X) DIE CUT ()
 CUST. NAME: T. R. Toppers LPI: PLATE TYPE: 250 iPlate
 JOB DESCRIPTION: ZC910-100 NUMBER ON: 1 ACROSS: 1 AROUND: 1
 CAD #: TRTR2518A CUSTOMER #: 4914 TEST: 44 ECT FLUTE: C
 BAR CODE #: 651844100052 LWR: BOX SIZE: 13.15 x 11.14 x 5.14 SHEET SIZE: 18.06 x 54.02
 PRINT DIE #: T-219 STEEL RULE DIE #: CYL. REPEAT: 41" PRESS: EMBA

COLOR ROTATION:				
COLOR	NUMBER	FORMULA	DENSITY	ANILOX
1. 90 Black				
2.				
3.				
4.				
5.				

INGREDIENTS: SUGAR, ENRICHED FLOUR (WHEAT FLOUR, NIACIN, REDUCED IRON, THIAMIN MONONITRATE [VITAMIN B1], RIBOFLAVIN [VITAMIN B2], FOLIC ACID), SOYBEAN AND PALM OIL (WITH TBHQ FOR FRESHNESS), COCOA PROCESSED WITH ALKALI, INVERT SUGAR, CONTAINS TWO PERCENT OR LESS OF DEGERMINATED YELLOW CORN FLOUR, CORNSTARCH, CHOCOLATE, SALT, LEAVENING (BAKING SODA, MONOCALCIUM PHOSPHATE), ARTIFICIAL FLAVOR, SOY LECITHIN, WHEY. CONTAINS WHEAT, MILK AND SOY.

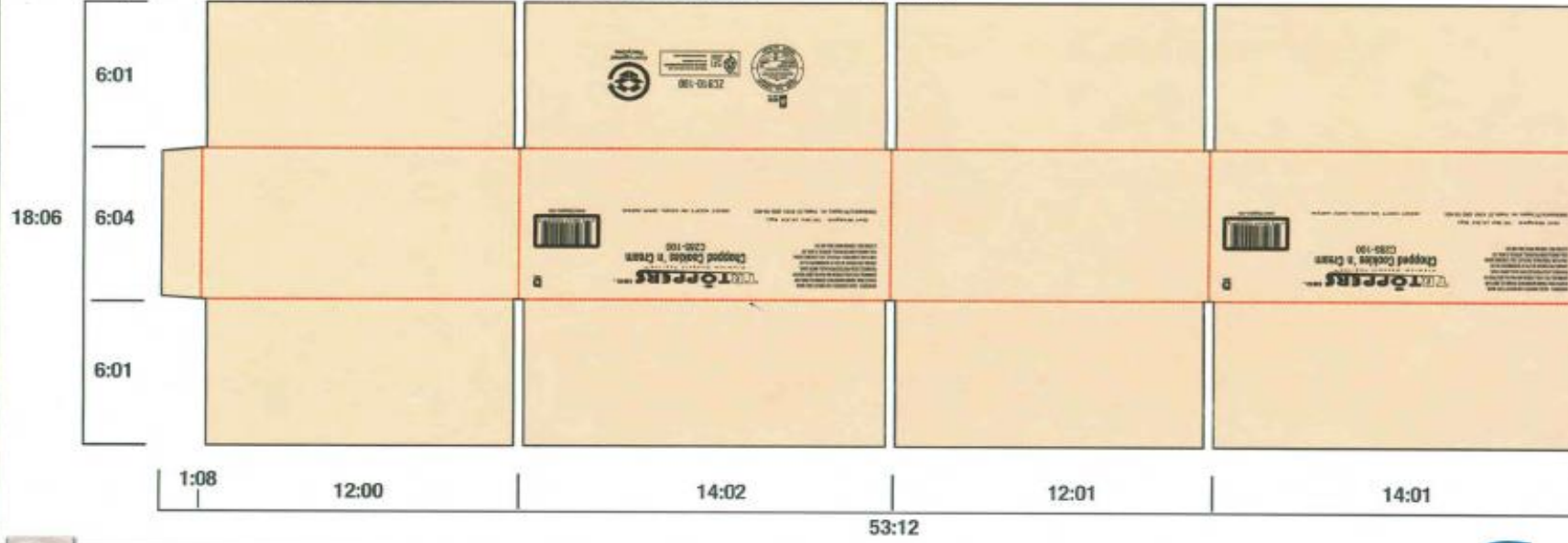
TR TOPPERS INC.
 Premium Dessert Top-Ins™
Chopped Cookies 'n Cream
C285-100



Net Weight: 10 lbs (4.54 Kg)
 Distributed by TR Toppers, Inc. Pueblo, CO 81001 (800) 748-4635

BEST KEPT IN COOL DRY AREA

www.trtoppers.com



790 Umatilla St. • Denver, CO 80204
 P: 303-595-3663 • F: 720-384-0633
 TF: 1-800-440-5188
 www.pepperdines.com

REORDER NUMBER: 105090
 THIS MASTER SHOULD NOT BE FOLLOWED
 FOR EXACT SIZE OR COLOR.

DATE 02/24/16



TR TOPPERS INC.
 Premium Dessert Top-Ins™
Chopped Cookies 'n Cream
C285-100



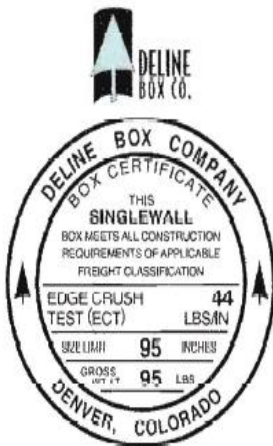
INGREDIENTS: SUGAR, ENRICHED FLOUR (WHEAT FLOUR, NIACIN, REDUCED IRON, THIAMIN MONONITRATE [VITAMIN B1], RIBOFLAVIN [VITAMIN B2], FOLIC ACID), SOYBEAN AND PALM OIL (WITH TBHQ FOR FRESHNESS), COCOA PROCESSED WITH ALKALI, INVERT SUGAR, CONTAINS TWO PERCENT OR LESS OF DEGERMINATED YELLOW CORN FLOUR, CORNSTARCH, CHOCOLATE, SALT, LEAVENING (BAKING SODA, MONOCALCIUM PHOSPHATE), ARTIFICIAL FLAVOR, SOY LECITHIN, WHEY. CONTAINS WHEAT, MILK AND SOY.

BEST KEPT IN COOL DRY AREA

Net Weight: 10 lbs (4.54 Kg)



Distributed by TR Toppers, Inc. Pueblo, CO 81001 (800) 748-4635 www.trtoppers.com



ZC910-100

