

MAISON

fine homes & interior design

MEET WISHART.

ATKINSON

CHARLOTTE

MOORE

WISHART

AYDEN

GRAY

REEFS

SKYF

GRIFFEN

JACQUILINE

Maison Fine Homes & Interior Design has created a series of signature floor plans designed to inspire you.

Each of our plans feature the best of curb appeal, functionality and natural light. Our homes have been carefully planned with distinct entry, living and sleeping spaces, large kitchens and dining areas, beautiful sight lines, utility zones which include storage, and the flexibility to re-purpose rooms as your needs change.

We understand that designing a home is extremely personal, so each of our signature plans is really just a starting point to help you discover what you love. We are able to work with a plan and tweak it just a bit so that it's the perfect fit for you and your family, or combine design elements from several of our plans to create a completely custom space.

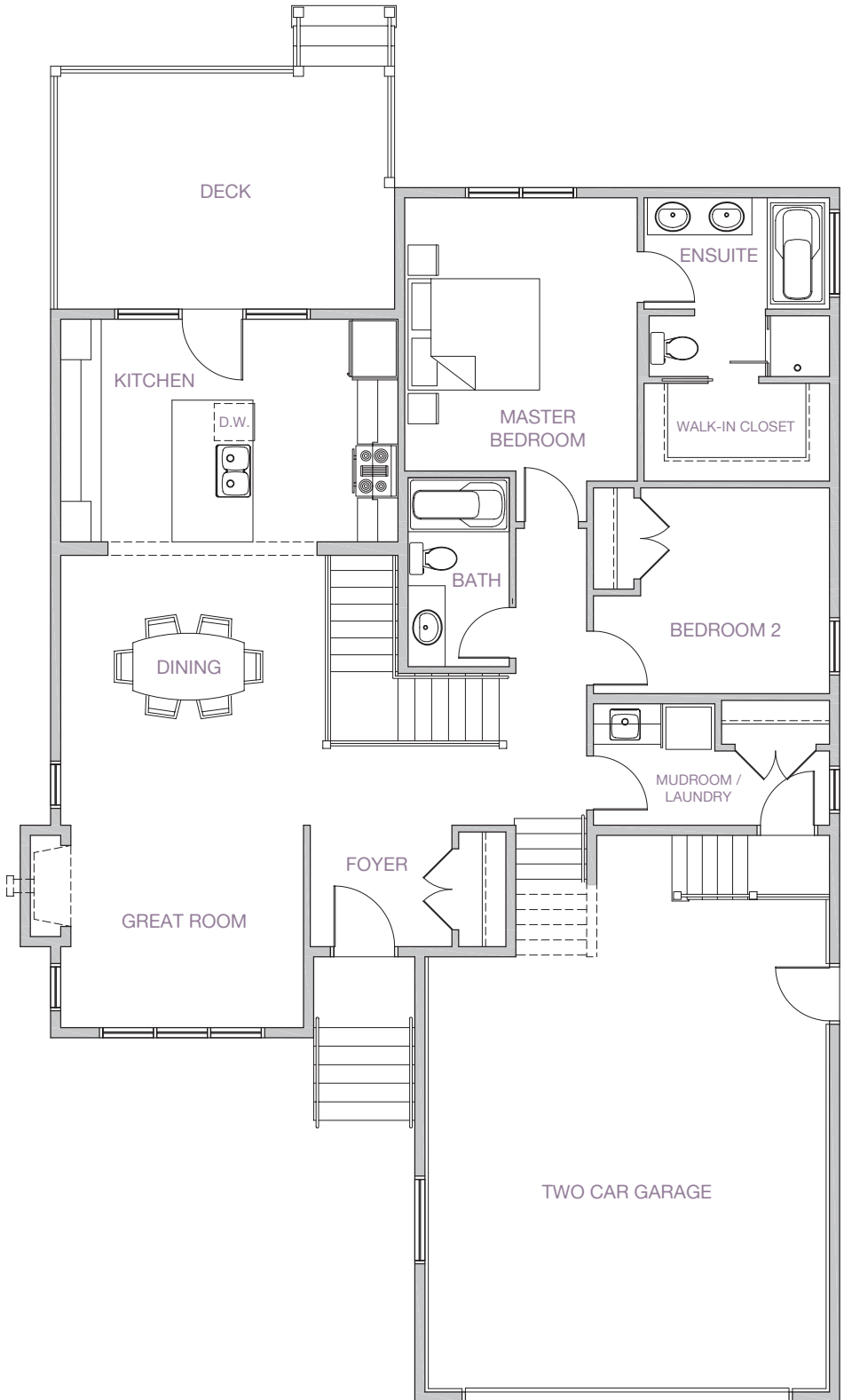
MEET WISHART.

This 1600 sq ft bungalow maintains a smaller footprint while offering more living space by building over the garage. This extra space offers the ultimate in flexibility as it can be used as a bedroom, office or media room. A combined laundry and mudroom keep laundry on the main floor and clutter out of site. Wishart's kitchen is the focal point of the home featuring a large island, serving counter and triple garden doors designed to bring the outdoors in.

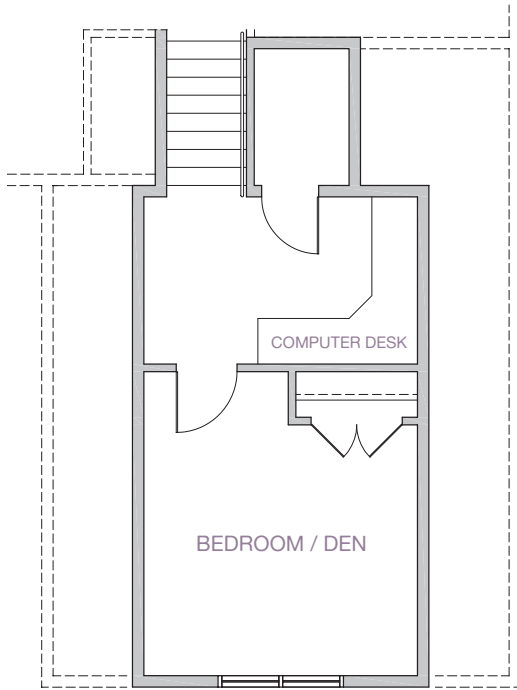
To learn how Wishart can be modified to fit your life please contact us.



Main Floor Plan - 1336 square feet



Upper Floor Plan - 282 square feet



MAISON

fine homes & interior design

build@maisonfinehomes.ca 306-242-3653 www.maisonfinehomes.ca

