

# MAISON

fine homes & interior design

MEET REES.

ATKINSON

CHARLOTTE

MOORE

WISHART

AYDEN

GRAY

REEFS

SKYF

GRIFFEN

JACQUILINE

Maison Fine Homes & Interior Design has created a series of signature floor plans designed to inspire you.

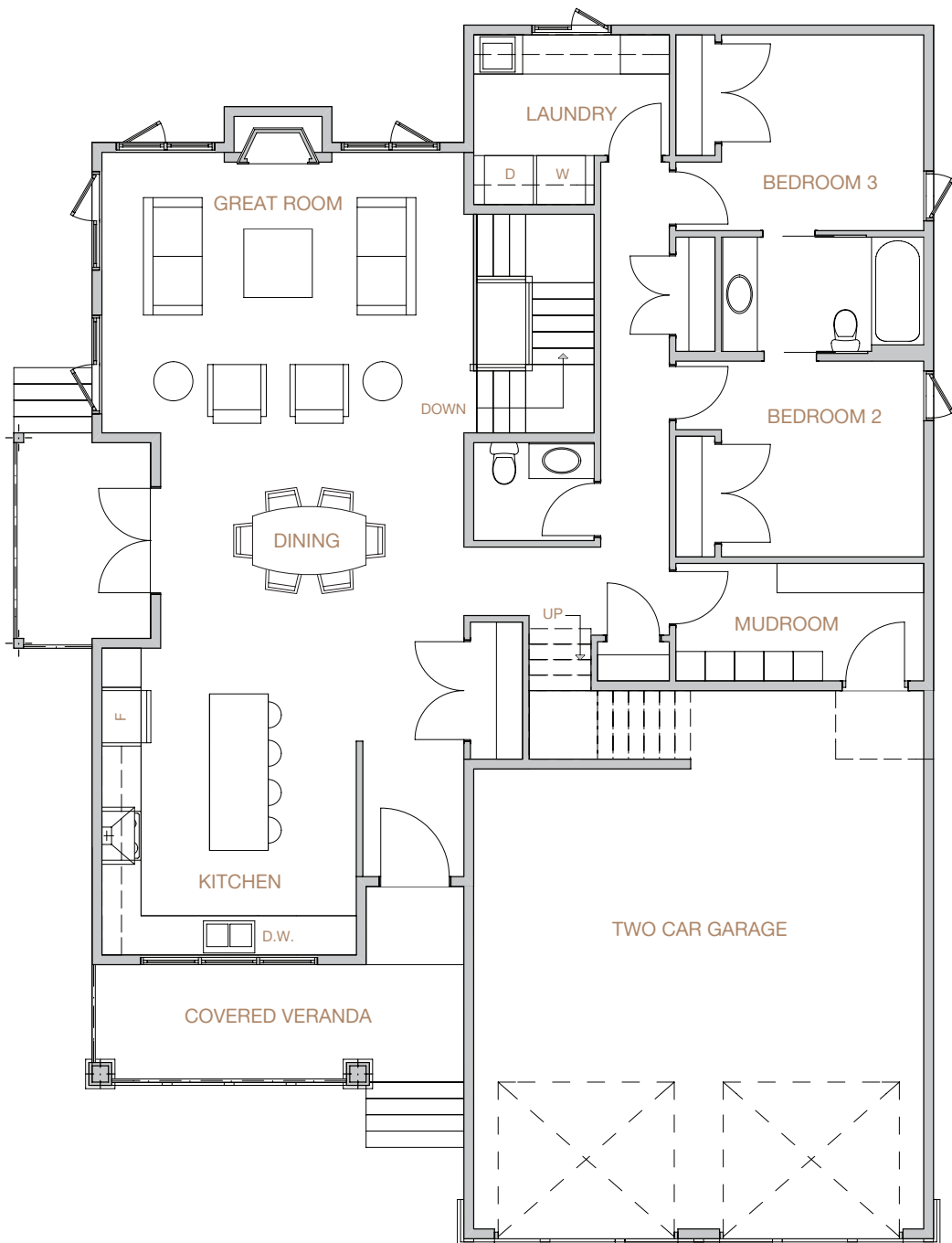
Each of our plans feature the best of curb appeal, functionality and natural light. Our homes have been carefully planned with distinct entry, living and sleeping spaces, large kitchens and dining areas, beautiful sight lines, utility zones which include storage, and the flexibility to re-purpose rooms as your needs change.

We understand that designing a home is extremely personal, so each of our signature plans is really just a starting point to help you discover what you love. We are able to work with a plan and tweak it just a bit so that it's the perfect fit for you and your family, or combine design elements from several of our plans to create a completely custom space.





# Main Floor Plan - 1582 square feet



Upper Floor Plan - 420 square feet



# MAISON

fine homes & interior design

build@maisonfinehomes.ca    306-242-3653    www.maisonfinehomes.ca

