

# N390-100 Rainbow Nerds®



Issue Date:	9/25/2020	Revision:	B
-------------	-----------	-----------	---

### PRODUCT DESCRIPTION

Tiny, tangy, crunchy candy.

### PHYSICAL ATTRIBUTES

Appearance:	Irregular shaped pieces with a glossy surface							
Color:	Typical color matching the fruit flavor							
Flavor:	Characteristic of fruit flavors with a combination of sweet and tart notes							
Texture:	Crunchy							
Pack Size:	2 x 5 Lbs.							
Case Dimensions: L[depth]xWxH in.	7	14.5	5.9	Case Cube(ft <sup>3</sup> ):	0.3466	Pallet Conf. (TI / HI)	15	10

### INGREDIENTS

DEXTROSE, SUGAR, MALIC ACID, AND LESS THAN 2% OF CORN SYRUP, NATURAL FLAVORS, CARNAUBA WAX, COLOR ADDED, CARMINE COLOR, BLUE 1, BLUE 1 LAKE, BLUE 2 LAKE, RED 40 LAKE, YELLOW 5, YELLOW 5 LAKE, YELLOW 6.

**ALLERGENS:** MAY ALSO CONTAIN TRACES OF: PEANUTS, TREE NUTS, EGG, MILK, SOY AND WHEAT.

### NUTRITIONAL INFORMATION

NUTRIENT	Per 100g
CALORIES	375
TOTAL FAT (g)	0
SATURATED FAT (g)	0
TRANS FAT (g)	0
CHOLESTEROL (mg)	0
SODIUM (mg)	7.31
TOTAL CARBOHYDRATE (g)	94
DIETARY FIBER (g)	0
TOTAL SUGARS (g)	91
ADDED SUGARS (g)	91
PROTEIN (g)	0
VITAMIN D (mcg)	0
CALCIUM (mg)	0.40
IRON (mg)	0
POTASSIUM (mg)	1.06



### Nutrition Facts

About 151 servings per container  
**Serving size 2 Tbsp (30g)**

**Amount per serving**  
**Calories 110**

	% Daily Value*
Total Fat 0g	0%
Saturated Fat 0g	0%
Trans Fat 0g	
Cholesterol 0mg	0%
Sodium 0mg	0%
<b>Total Carbohydrate 28g</b>	<b>10%</b>
Dietary Fiber 0g	0%
Total Sugars 27g	
Includes 27g Added Sugars	<b>54%</b>
<b>Protein 0g</b>	
Vitamin D 0mcg	0%
Calcium 0mg	0%
Iron 0mg	0%
Potassium 0mg	0%

\*The % Daily Value tells you how much a nutrient in a serving of food contributes to a daily diet. 2,000 calories a day is used for general nutrition advice.

<b>Brand Name:</b>	TR Toppers	<b>Net Weight: (Lbs.)</b>	10.00
<b>Country of Origin</b>	USA	<b>Net Weight: (Kg.)</b>	4.54
<b>Case GTIN</b>	0 06 51844 10374 9	<b>Gross Weight: (Lbs.)</b>	11.00
<b>Kosher</b>	Not Kosher	<b>Gross Weight: (Kg.)</b>	4.99
		<b>Density (lbs/gal)</b>	7.87

### MICROBIOLOGICAL ATTRIBUTES\*

Attributes	Limits
Total Aerobic Plate Count (cfu/g)	<10,000
Yeast and Mold (cfu/g)	<100
Coliforms (cfu/g)	<10
E. coli (MPN/g)	Negative
Salmonella (/375g)	Negative
Listeria	Negative

\*The above attributes are provided by the product manufacturer. Parameters are guaranteed attributes. It is not indicative of product testing.

### GMO STATEMENT

X	Produced with Genetic Engineering.
	Partially Produced with Genetic Engineering.
	May be produced with Genetic Engineering.
	<b>NOT</b> Produced with Genetic Engineering.

STORAGE CONDITIONS	
Recommended Condition:	Best kept ambient (<68°F) with <60% relative humidity.

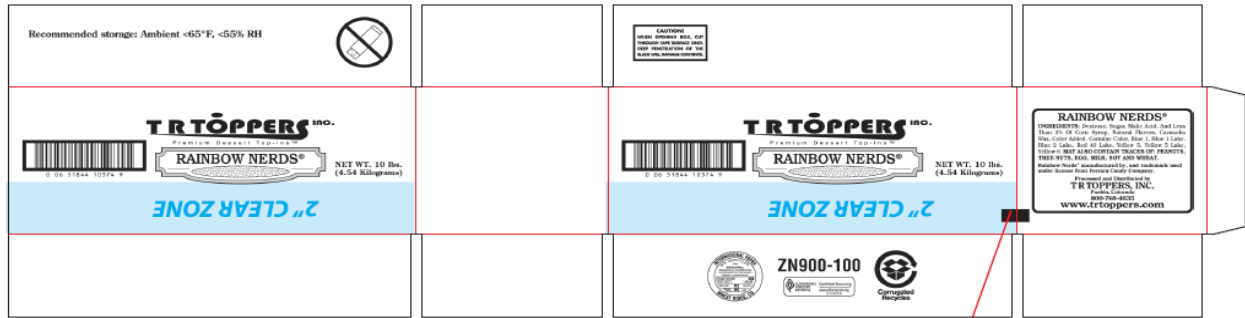
SHIPPING CONDITIONS	
Recommended Condition:	Best shipped ambient (<68°F) with <60% relative humidity.
Alternate Condition:	May be shipped in freezer or refer truck at 0°F for less than 7 days.

SHELF LIFE	
Recommended Shelf Life:	730 days at recommended storage conditions.

ALLERGEN / SENSATIZER TABLE			
COMPONENT	PRESENT IN PRODUCT	PRESENT IN PRODUCTS MANUFACTURED ON THE SAME LINE	PRESENT IN THE SAME MANUFACTURING PLANT
PEANUTS AND DERIVATIVES	MAY CONTAIN	YES	YES
TREE NUTS AND DERIVATIVES	MAY CONTAIN	YES	YES
EGG AND DERIVATIVES	MAY CONTAIN	YES	YES
MILK AND DERIVATIVES	MAY CONTAIN	YES	YES
SOY AND DERIVATIVES	MAY CONTAIN	YES	YES
WHEAT	MAY CONTAIN	YES	YES
FISH	NO	NO	NO
CRUSTACEAN SHELLFISH	NO	NO	NO
SULFITES > 10 ppm	NO	NO	YES
MUSTARD	NO	NO	NO
SESAME	NO	NO	NO
GLUTEN	MAY CONTAIN (WHEAT)		
ARTIFICIAL FLAVOR SOURCE	NO		
FD&C ARTIFICIAL COLORS	BLUE 1, BLUE 1 LAKE, BLUE 2 LAKE, RED 40 LAKE, YELLOW 5, YELLOW 5 LAKE, YELLOW 6		

CODE FORMAT	EXAMPLE: 25811 15:32 N390-100
Case Code - Left Side: JJYL, Time, N390-100	JJJ = Production Julian Date 258 = September 15; Y = Last Digit of Year 1 = 2011; L = Line
Case Code - Right Side: JJYL, Time, N390-100	(Numeric) 1 = Line 1; Time: HH:MM 15:32 = 3:32 p.m.
Pallet Markings: JJYL, Pallet #, N390-100	Product Code = (e.g. N390-100)

**LABEL / CASE GRAPHICS**



**RAINBOW NERDS®**  
 INGREDIENTS: Dextrose, Sugar, Malic Acid, And Less Than 2% Of Corn Syrup, Natural Flavors, Carnauba Wax, Color Added, Carmine Color, Blue 1, Blue 1 Lake, Blue 2 Lake, Red 40 Lake, Yellow 5, Yellow 5 Lake, Yellow 6. **MAY ALSO CONTAIN TRACES OF: PEANUTS, TREE NUTS, EGG, MILK, SOY AND WHEAT.**  
 Rainbow Nerds® manufactured by, and trademark used under license from Ferrera Candy Company.  
 Processed and Distributed by  
**TR TOPPERS, INC.**  
 Pueblo, Colorado  
 800-748-4635  
[www.trtoppers.com](http://www.trtoppers.com)

