

XBASE



FEATURES

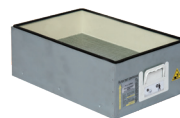
- VariColour filter blocked warning system
- Highest grade HEPA and carbon technology
- Automatic electronic flow control - maintains a constant extraction rate even as the filter blocks
- Quiet in operation
- Simple to install and easy to relocate

SPECIFICATIONS

Voltage	120v	230v
Part Number	0AL4107	0AL4104
Wattage	1.1kW	1.2kW
Frequency	50Hz / 60Hz	50Hz / 60Hz
Cabinet Height	705mm	705mm
Cabinet Width	707mm	707mm
Cabinet Depth	691mm	691mm
Cabinet Weight	80kg	80 kg
Sound Level	<60dBa	<60dBa
Airflow	400m3/h	400m3/h

INCLUDED AS STANDARD...

FILTERS



**Main Filter
Code**
110545

Description
HEPA/Chemical



**Pre-filter
Code**
111108

Description
F8/F9 Labyrinth

Find out more:



www.purex.co.uk



purex@purex.co.uk



+44 (0)1405 746030

CONNECTION KIT

***Connection kit is included
see overleaf for options***

Machine Supplied With • 1 x Main Filter • 1 x Pre-filter • 1 x Connection Kit • 1 x Power Cable • 1 x Manual

OPTIONS

Main Filter

Code:
113585

Description:
HEPA/Chemical Special

Connection Kits

Hose End
Diameter

Hose
Length

Purex Inlet
Diameter

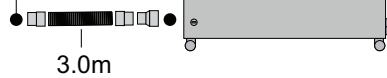
Code: 100032

50mm

3m

80mm

Connect
to 50mm
diameter
pipe/port
or Purex
valve



3.0m

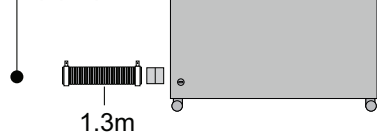
Code: 120293

80mm

1.3m

80mm

Connect
to 80mm
diameter
pipe/port



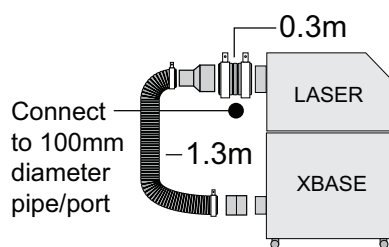
1.3m

Code: 120292

100mm

1.6m

80mm



Connect
to 100mm
diameter
pipe/port

0.3m

LASER

XBASE

1.3m

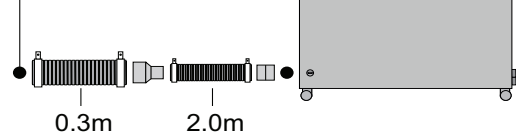
Code: 120288

100mm

2.3m

80mm

Connect
to 100mm
diameter
pipe/port

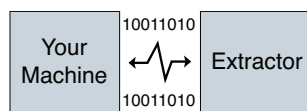


0.3m

2.0m

If you do not see a connection kit that fits your machine or pipework, please contact Purex or your representative

Interfacing



Interfacing can remotely start the Purex machine when the connected machine starts.

Interfacing can also warn the connected machine when the Purex machine is in alarm.

Take a look through our Interfacing Guide to see our extensive range of options



www.fumeextractionsystems.com
sales@purexusa.com
tel:(336) 288-1613