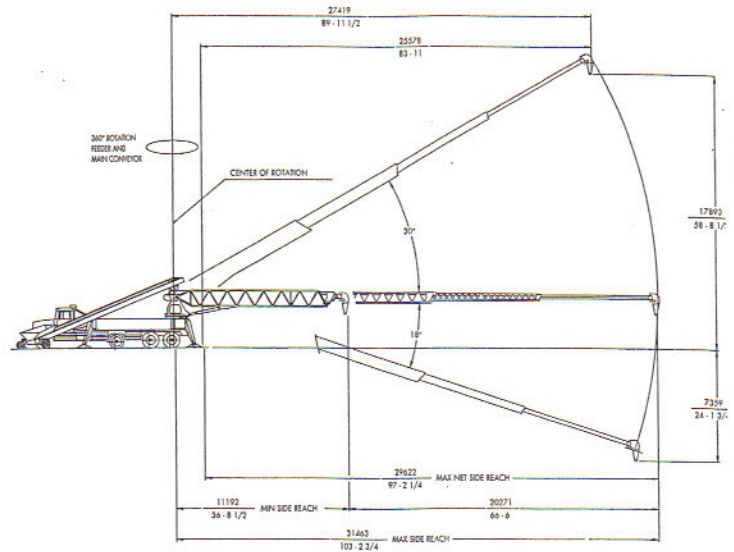
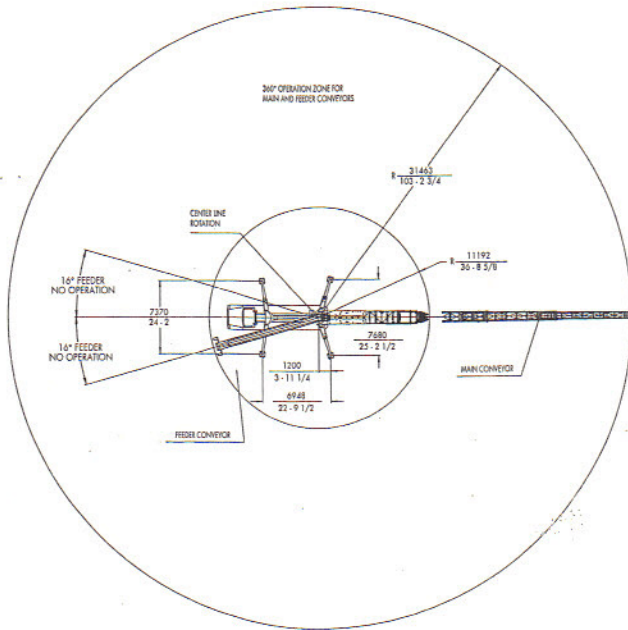




Specifications TB 105 Belt Conveyor



TB 105 Belt Conveyor Specifications

Conveyor horizontal reach –			
Maximum at 0°	105'	(32.00m)	
Maximum at 30°	90'	(27.42m)	
Conveyor belt width	18"	(457mm)	
Feed conveyor length	40'	(12.19m)	
Feed conveyor belt width	18"	(457mm)	
Trunk/end hose length	15'	(4.57m)	
Discharge height from grade –			
Maximum at 30°	58'8"	(17.89m)	
Maximum at -18°	-24'2"	(-7.36m)	
Rated capacity at 0°	6 yd ³ /min	(4.6m ³ /min)	
main & feed conveyors	360 yd ³ /hr	(275m ³ /hr)	
Rated capacity up to 20°	3.8 yd ³ /min	(2.9m ³ /min)	
main & feed conveyors	230 yd ³ /hr	(175m ³ /hr)	

Maximum theoretical values listed above.

Outriggers

Net reach beyond outriggers –		
at 0 degrees	97'2"	(29.62m)
at 30 degrees	84'	(25.58m)
Outrigger spread –		
Front, swing-down	24'2"	(7.37m)
Rear, swing-down	25'2"	(7.68m)

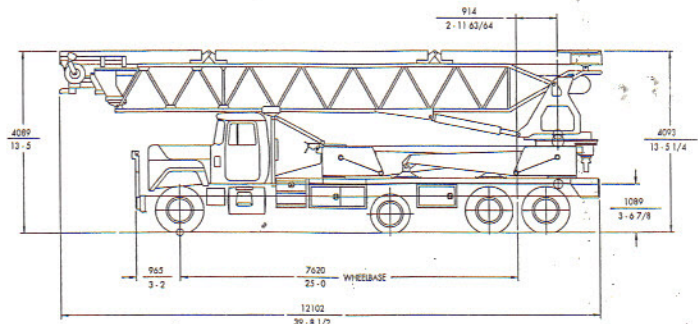
General Specifications

Water tank capacity	200 gal	(757L)
Hydraulic oil tank capacity with cooler	150 gal	(568L)

Truck Specifications

	Mack RD 688S	
Weight	20,806 lbs	(9,438kg)
Wheelbase	300"	(7,620mm)
Cab height	104"	(2,642mm)
Steering radius	45'6"	(13.87m)
Steering angle	38°	
Fuel tank capacity	110 gal	(416L)
Transmission	Mack T309LR 9-Speed	

All specifications apply to units mounted on Mack RD 688S.



Transport Axle Weights - lbs. (kg)
Based on Model Mack RD 688S

Steering	Pusher	Tandem	Total
19,014 (8,624)	10,000 (4,535)	29,246 (13,264)	58,260 (26,423)
22,781 (10,332)	Up	35,479 (16,091)	58,260 (26,423)

Weights are approximate and include conveyor truck, full hydraulic oil, fuel, water and driver. Dimensions vary with different truck makes, models and specifications.



Putzmeister America
1733 90th Street
Sturtevant
Wisconsin 53177 USA

Telephone (262) 886-3200
(800) 884-7210
Facsimile (262) 884-6338
www.putzmeister.com

Right to make technical amendments reserved.