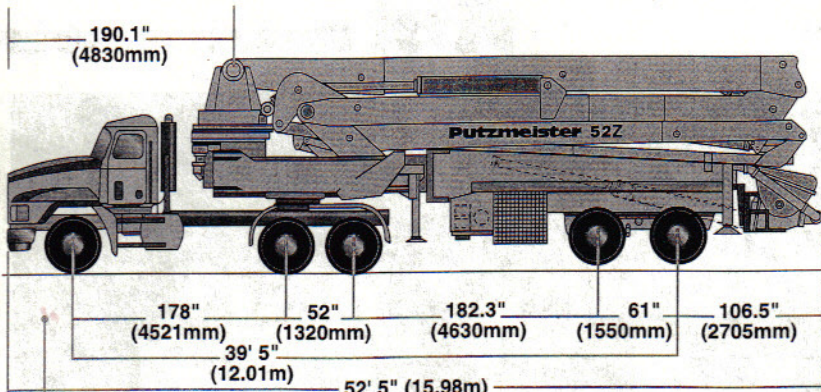


Specifications

52Z-Meter Concrete Pump ■ Semi-Trailer Mounted



Semi-Trailer Mounted Specifications

Based on Model MACK CH613

Length	52'5"	(15.98m)
Width	8'2"	(2.50m)
Height	13'2"	(4.00m)
Wheelbase	204"	(5182mm)
Axle group 1 weight	11,700 lbs	(5,307kg)
Axle group 2 weight	43,630 lbs	(19,791kg)
Axle group 3 weight	42,950 lbs	(19,482kg)
Approx total weight	98,280 lbs	(44,580kg)

Weights are approximate and include pump, boom, truck, full hydraulic oil, driver and some fuel. Varies with options selected.

Dimensions will vary with different truck makes, models and specifications.

BSS Model illustrated on Mack

49.2"
(1250mm)

Boom Specifications • Multi-Z Design

Height & Reach

Vertical reach	169'7"	(51.70m)
Horizontal reach	157'6"	(48.00m)
Reach from front of tractor*	141'7"	(43.15m)
Reach depth	124'8"	(38.00m)
Unfolding height	33'2"	(10.10m)

5-Section Boom

1st section articulation	90°
2nd section articulation	180°
3rd section articulation	260°
4th section articulation	180°
5th section articulation	270°
1st section length	35'2" (10.70m)
2nd section length	30'6" (9.30m)
3rd section length	30'8" (9.35m)
4th section length	30'8" (9.35m)
5th section length	30'6" (9.30m)

General Specs

Pipeline size (ID) metric ends	5"	(125mm)
with couplings	5.5"	(140mm)
Rotation	365°	
End hose-length (heavy duty)	13'	(4m)
End hose-diameter	5"	(125mm)
Outrigger spread L-R-front swing-out & telescope	33'4"	(10.15m)
Outrigger spread L-R-rear swing-out	33'4"	(10.15m)

Pump Specifications

52Z.16H

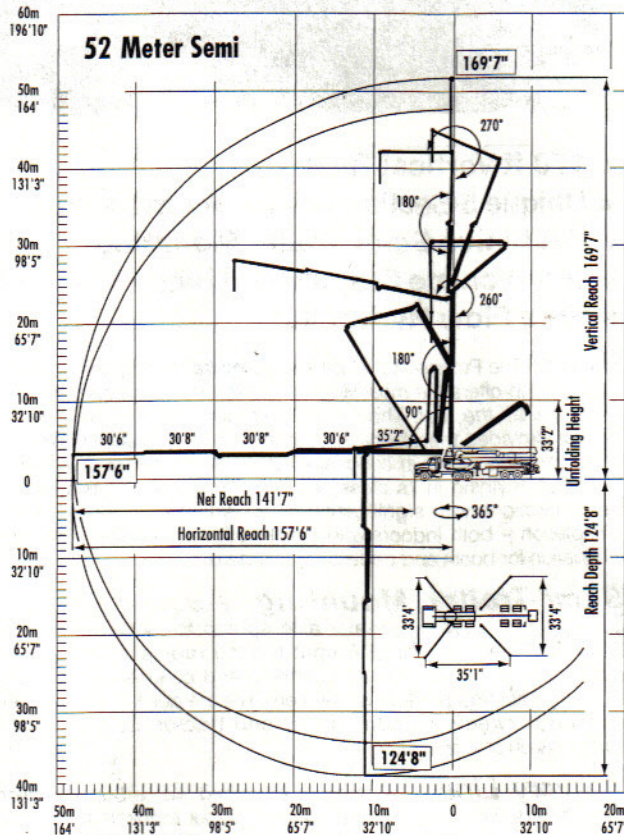
52Z.20H

Output- rod side	210 yd ³ /hr (160m ³ /hr)	—
piston side	146 yd ³ /hr (112m ³ /hr)	260 yd ³ /hr (200m ³ /hr)
Pressure- rod side	1233 psi (85 bar)	—
piston side	1885 psi* (130 bar)*	1233 psi* (85 bar)*
Concrete cylinder diameter	9" (230mm)	11" (280mm)
Stroke length	83" (2100mm)	83" (2100mm)
Max strokes per minute- rod side	31	—
piston side	21	26
Volume control	0-Full	0-Full
Vibrator	Standard	Standard
Hard chromed concrete cylinders	Standard	Standard
Hydraulic system	Free Flow	Free Flow
Hydraulic system pressure	5075 psi (350 bar)	5075 psi (350 bar)
Differential cylinder diameter	5.5" (140mm)	5.5" (140mm)
Rod diameter	3.1" (80mm)	3.1" (80mm)
Maximum size aggregate	2.5" (63mm)	2.5" (63mm)
Water tank - pedestal	238 gal (900L)	238 gal (900L)
- outrigger leg	185 gal (700L)	185 gal (700L)
Auxiliary diesel engine	Cummins M11 330 hp 6-cylinder	—

Maximum theoretical values listed.

* Reach based on Model Mack CH613 tractor

• Standard delivery line system rated at max line pressure of 1233 psi (85 bar)



Putzmeister America
1733 90th Street
Sturtevant
Wisconsin 53177 USA

Telephone (414) 886-3200
Facsimile (414) 886-3212
www.putzmeister.com

Right to make technical amendments reserved.