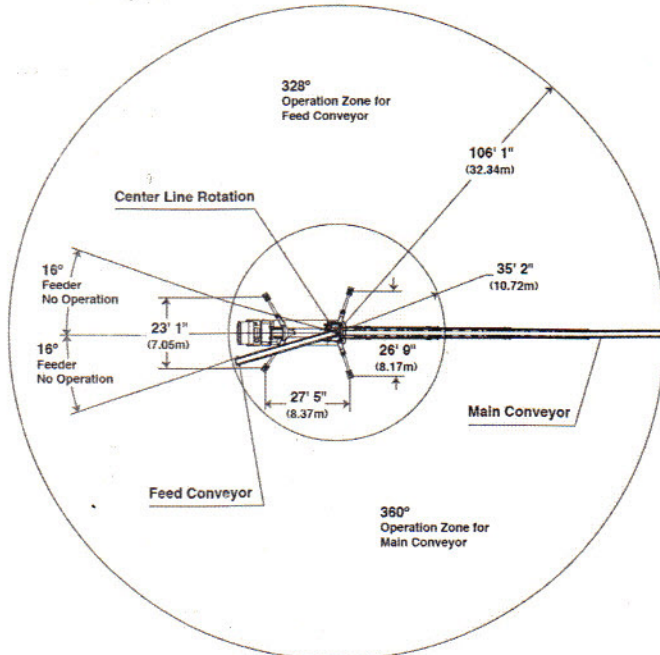
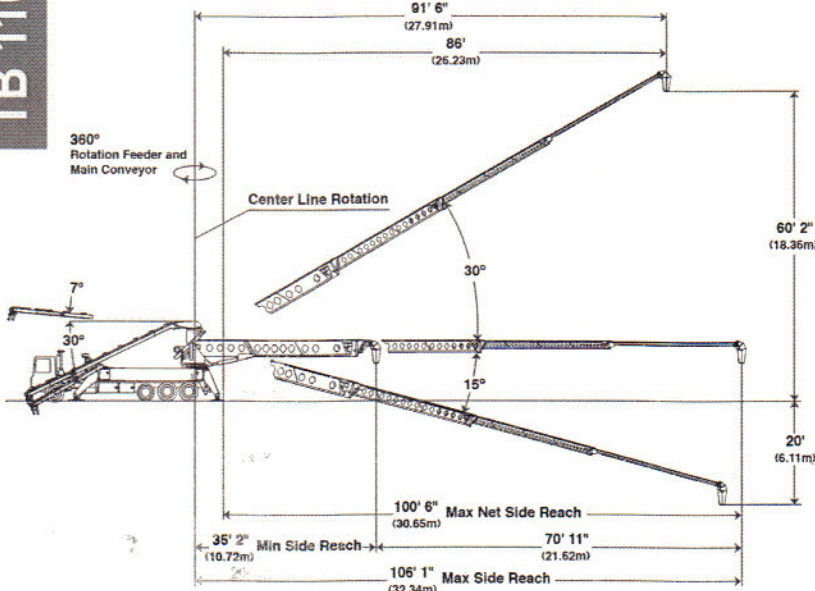
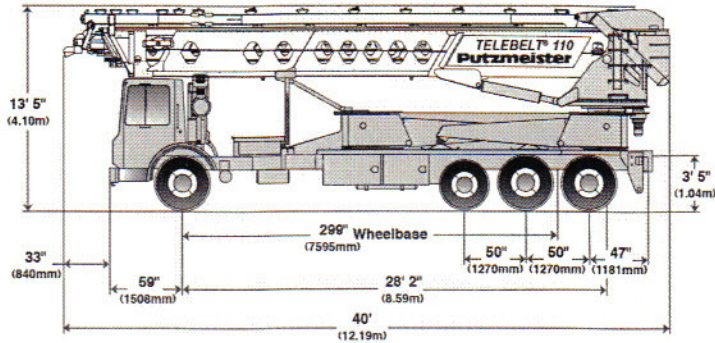


**TB 110**



Photos and drawings are for illustrative purposes only.

## Conveyors

Conveyor horizontal reach —		
Maximum at 0°	106' 1"	(32.34m)
Maximum at 30°	91' 6"	(27.91m)
Conveyor belt width	18"	(457mm)
Feed conveyor length	38'	(11.60m)
Feed conveyor belt width	18"	(457mm)
Trunk/end hose length	15'	(4.57m)
Discharge height from grade —		
Maximum at 30°	60' 2"	(18.36m)
Maximum at -15°	-20'	(-6.11m)
Calculated rated capacity at 0°	6 yd <sup>3</sup> /min	(4.60m <sup>3</sup> /min)
main & feed conveyors	360 yd <sup>3</sup> /hr	(275m <sup>3</sup> /hr)
Calculated rated capacity up to 20°	3.80 yd <sup>3</sup> /min	(2.90m <sup>3</sup> /min)
main & feed conveyors	230 yd <sup>3</sup> /hr	(175m <sup>3</sup> /hr)
Observed capacity	4.58 yd <sup>3</sup> /min	(3.50m <sup>3</sup> /min)
main & feed conveyors	275 yd <sup>3</sup> /hr	(210m <sup>3</sup> /hr)

## Outriggers

Net reach beyond outriggers —		
at 0°	100' 6"	(30.65m)
at 30°	96'	(26.23m)
Outrigger spread L - R — front swing out hydraulic up/down	23' 1"	(7.05m)
Outrigger spread L - R — rear swing out hydraulic up/down	26' 9"	(8.17m)

## General Specifications

Water tank capacity	200 gal	(757L)
Hydraulic oil tank capacity with cooler	150 gal	(568L)

## Truck Specifications\*\*

Weight	20,525 lbs	(9,310kg)
Engine horsepower	405 hp	(302kW)
Wheelbase	299"	(7,595mm)
Cab height	104"	(2,642mm)
Steering radius (outside)	45' 6"	(13.87m)
Steering angle	30°	
Fuel tank capacity	80 gal	(303L)
Transmission	Mack T310 10-Speed	

## Transport Axle Weights\*\*

Steering	19,365 lbs	(8,784kg)
Pusher	11,000 lbs	(4,989kg)
Tandem	31,438 lbs	(14,260kg)
Total	61,803 lbs	(28,034kg)

Maximum theoretical values listed.

\* Truck dimensions will vary with different truck makes, models and specifications.

\* Weights are approximate and include driver, conveyor truck, full hydraulic oil, full fuel and full water.

\* All specifications apply to units mounted on Mack MRU 613.

# Putzmeister

Putzmeister America, Inc. Telephone (262) 886-3200  
 1733 90th Street (800) 884-7210  
 Sturtevant, WI 53177 USA Facsimile (262) 884-6338  
 Telebelt@putzam.com  
 www.putzmeister.com

