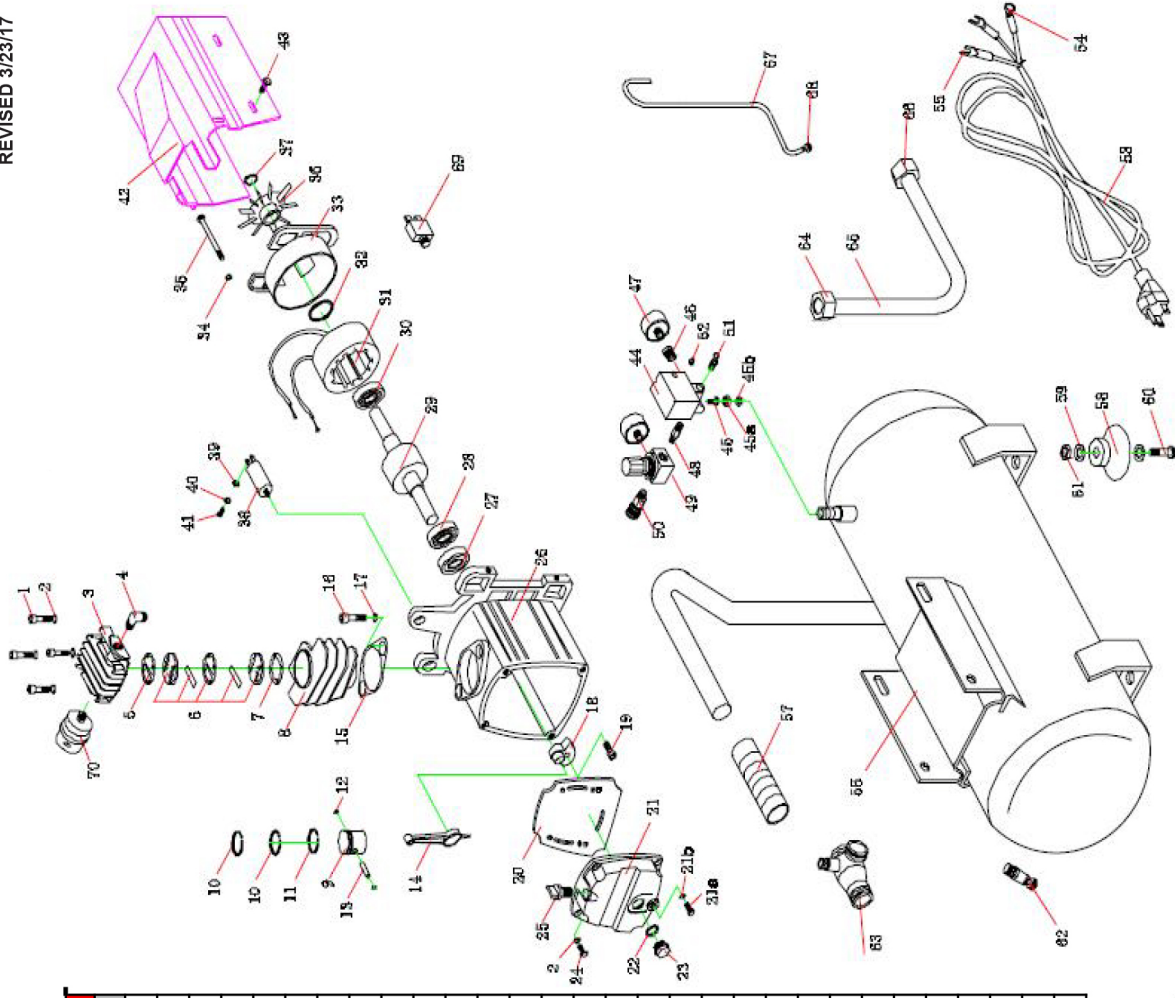


Air Compressor part breakdown sheet - IHHD103L

Item	Description	Part	Item	Description	Part
1	Head Bolt M6x55	IH30551	43	Bolt M5*15	IH1727
2	Spring washer 6	IH1211	44	Pressure switch	21UCBDB-CH
3	Cylinder head	IH1343	45	Connector	IH1045
4	Exhaust elbow	IH1086A	46	Connector	IH0004
5	Head Gasket	IH1051	47	Pressure gauge	IH1177
6	Valve assembly		48	Connector	IH0003
7	Valve Plate to Cyl Gasket	IH1053	49	Regulator	R46-200-RNLA
8	Cylinder	IH2034B	50	Quick connect	10TT-8
9	Piston	IH2038B	51	Safety valve	IH1090
10	Piston air ring	IH2039M*	52	Strain relief	IH2206
11	Piston oil ring	IH2039N*	53	Power cord	IH1841
12	Piston pin clip	IH1420B	54	Terminal (O)	
13	Piston pin	IH1534B	55	Terminal (Y)	
14	Connecting rod	IH1066B	56	Tank	IH1222
15	Cyl to Crankcase Gasket	IH1225	57	Handle Grip	IH1527
16	Bolt M8*25	IH2035	58	Custon foot	IH2200
17	Spring washer 8	IH1212	59	Washer	IH1643
18	Crankshaft	IH1068A	60	Bolt	IH1641
19	Bolt M8*22-LH	IH1802	61	Nut	IH1644
20	Crank case gasket	IH2019	62	Drain valve	IH1850
21	Crank case cover	IH2021	63	Check valve	IH2026B
21a	Bolt M6*10	IH2207	64	Exhaust pipe w/fitings	IH1172
22	Oil sight Gasket	IH1591	65	Exhaust tube w/fitings	IH1172
23	Oil sight glass	IH1519	66	Overload protector	IH2000
24	Bolt M6*18	IH0621	67	Unloader tube w/fiting	IH1312
25	Breather	IH1071	69	Overload protector	IH2000
26	Crank case	IH2020	70	Air Filter Assy	IH1072
27	Oil seal	IH0530	6a	Valve Plate	IH1064
28	Bearing	IH0140	6b	Reed Valve	IH1052
29	Rotator	IH1919	6c	Middle Vlv gasket	IH1049
30	Bearing	IH0150			
31	Stator	IH1918A			
32	Spring washer wave	IH2209			
33	Rear cap	IH1046			
34	Spring washer 5	IH2210			
35	Bolt M5	IH1048			
36	Fan	IH1044			
37	Circlips	IH1101			
38	Capacitor	IH2250			
39	Washer 3	IH1039			
40	Spring washer 3	IH1040			
41	Bolt M3*6	IH1041			
42	Shroud	IH2024			



IRON HORSE

WOOD INDUSTRIES INCORPORATED

Call 1-800-551-2406 for the Customer Service Department.