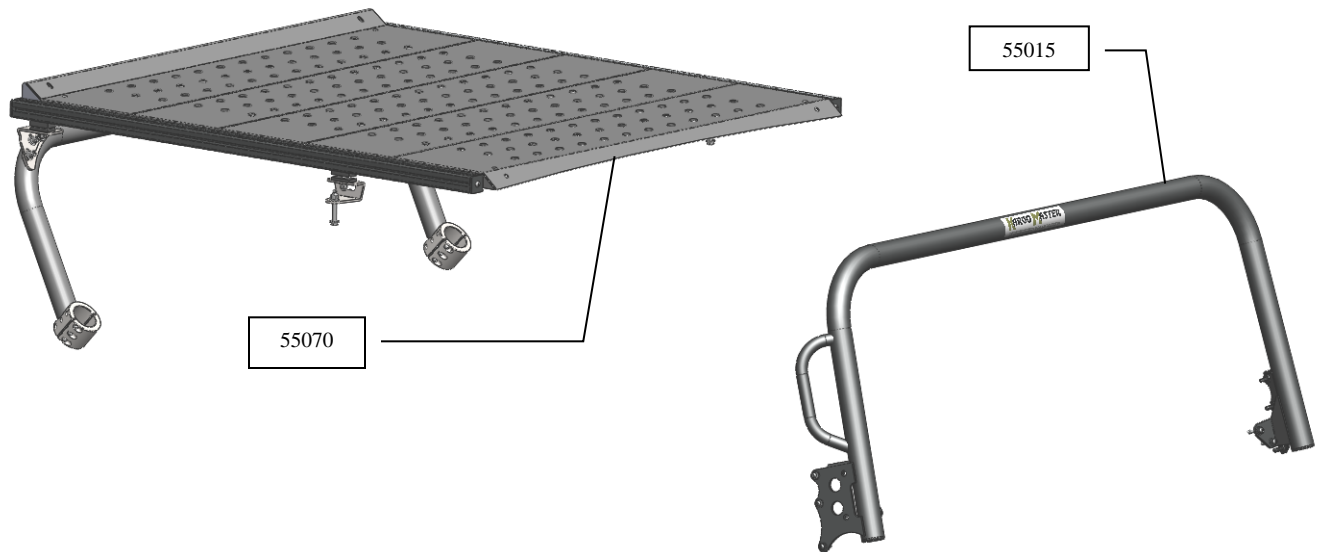




## 55045 Installation Instructions

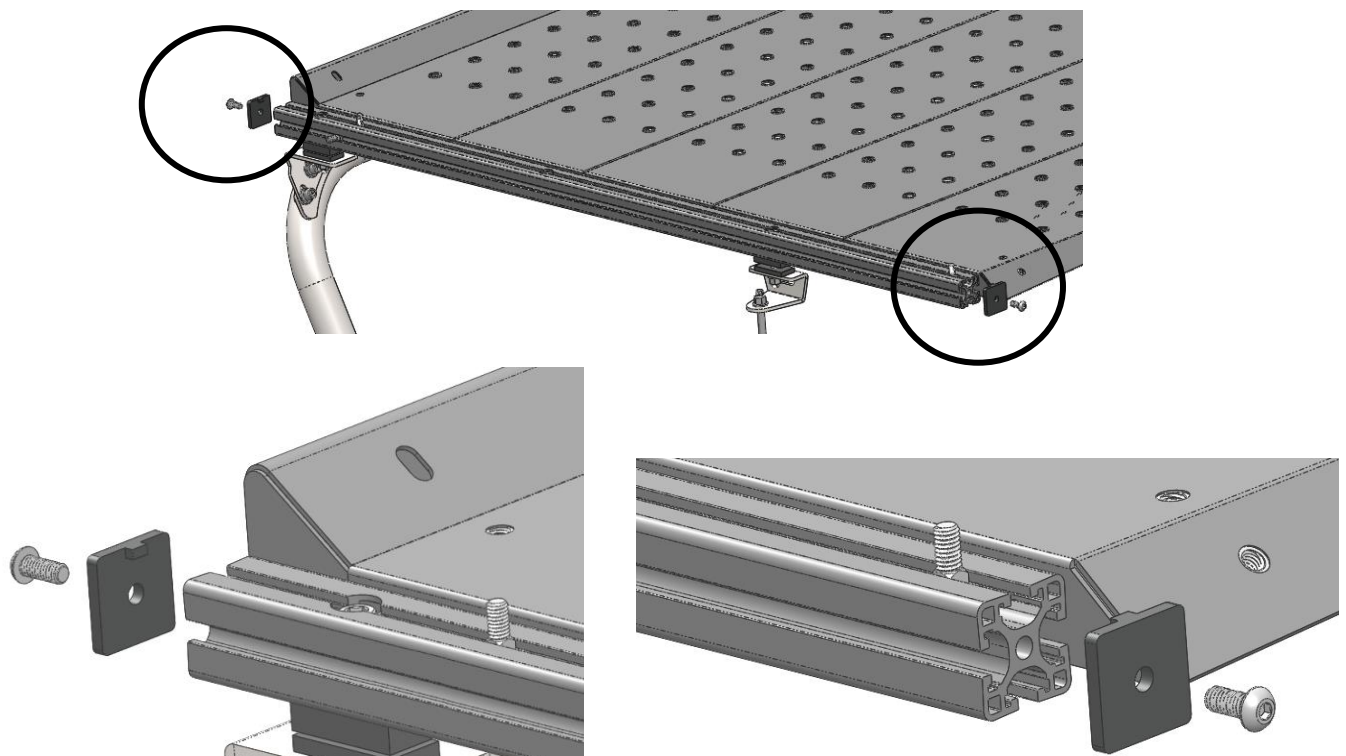
### Step 1

- Be sure to have Congo Pro Front Hoop (55015) and JK-MOD-RAK Low-Pro (55070) installed on JEEP prior to installation of Spreader Bars (55045).



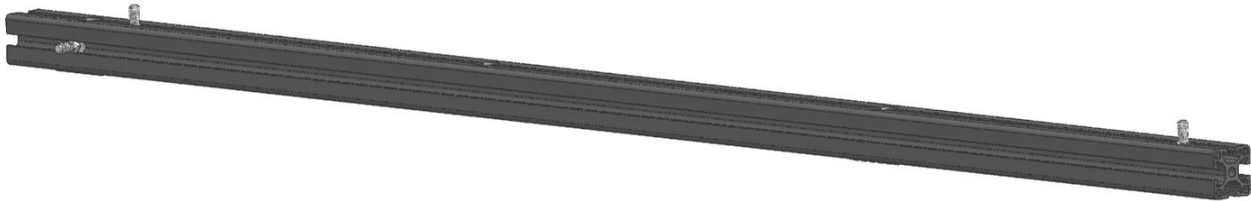
### Step 2

- Remove end caps from the ends of the extrusion on the JK-MOD-RAK Low-Pro.



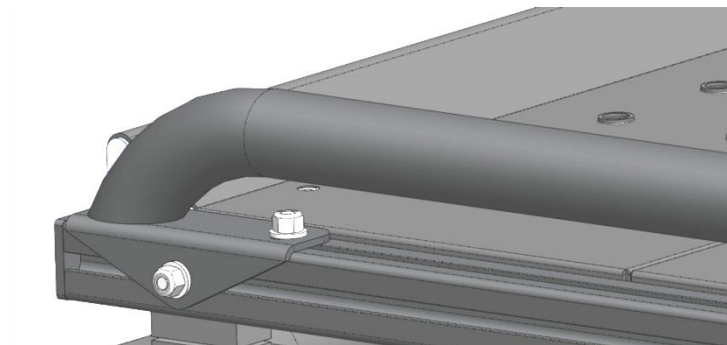
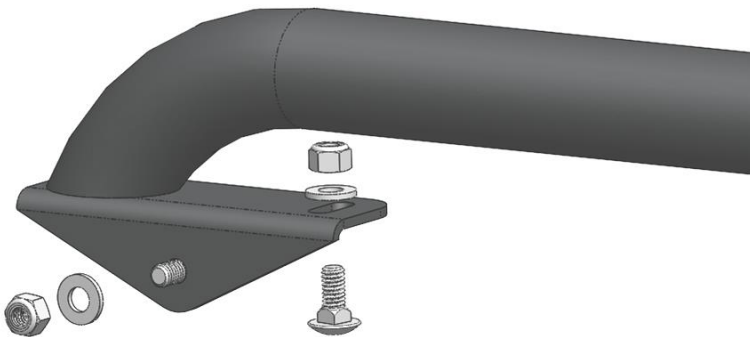
### Step 3

- Slide one 5/16" x 3/4" carriage bolt into the top of the extrusion from the front.
- Slide one 5/16" x 3/4" carriage bolt into the top of the extrusion through the middle cutout and slide to the rear.
- Slide one 5/16" x 3/4" carriage bolt into the side of the extrusion in the rear.



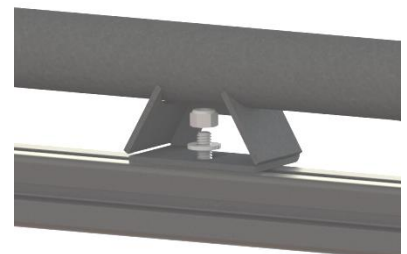
### Step 4

- Place end of spreader bar on top of extrusion while aligning carriage bolts previously installed. Bolt spreader bar to extrusion using carriage two carriage bolts, two 5/16" flat washers and two 5/16" NYLOC nuts.



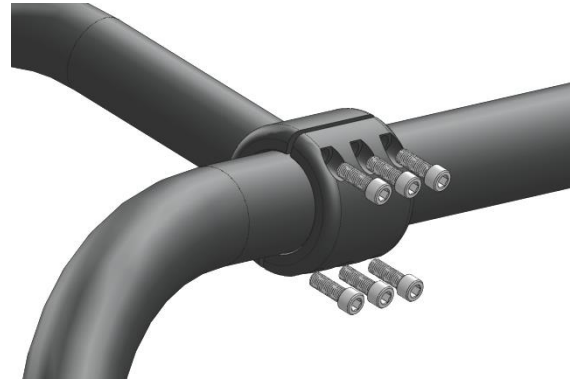
### Step 5

- Bolt the middle of the spreader bar to the extrusion using one carriage bolt, 5/16" flat washer and 5/16" NYLOC nut.

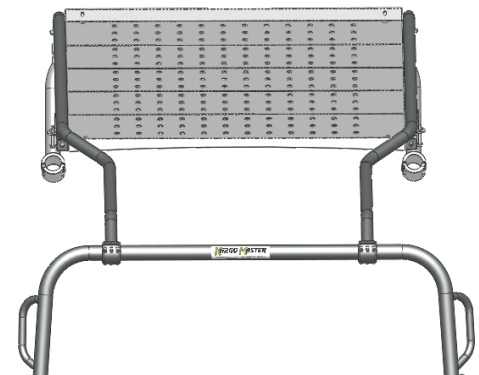


### Step 6

- Place front clamp of Spreader Bars around the A-frame and bolt using twelve 5/16" - 18 x 7/8" socket head cap screws.
- Keep clamps loose to allow adjustment.



\*\*The bend in the spreader bars should bend in towards each other.



### Step 7

- Repeat on driver side.

### Step 8

- Go back through and tighten all bolts from previous steps.
- Your installation is complete.

