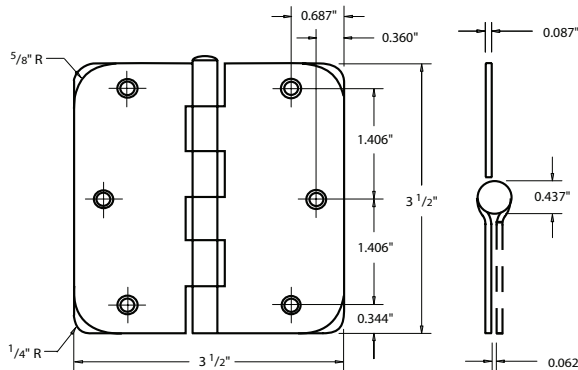
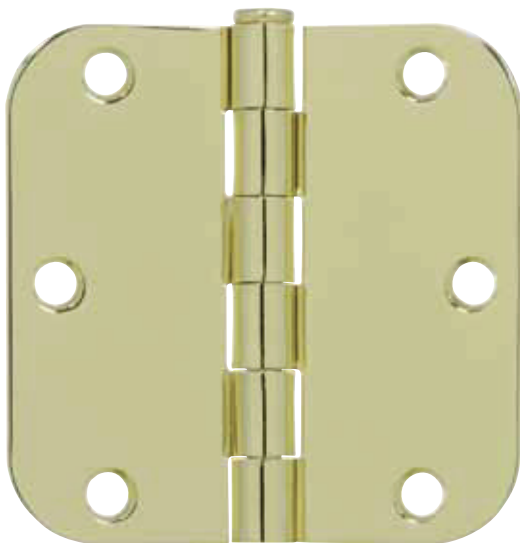


# Residential Hinges

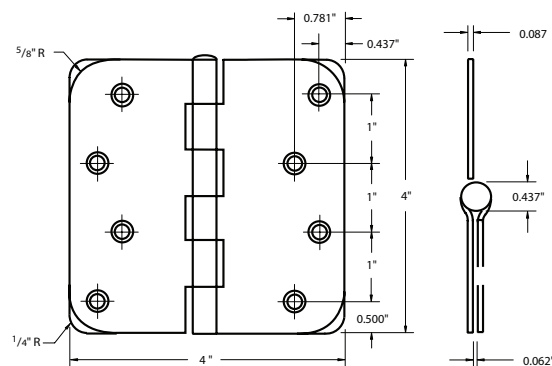


**RH3503  
US3**

## Plain Bearing

1/4" radius corner or 5/8" radius corner

- 3-1/2" and 4" Full mortise hinge
- 5 knuckles, reversible design
- Steel base metal
- Gauge: 0.087" (2.2mm)
- Packaging: bulk assembled



CODE	SIZE	RADIUS	SCREW
RH32	3-1/2" x 3-1/2"	1/4"	#9 x 3/4"
RH35	3-1/2" x 3-1/2"	5/8"	#9 x 3/4"
RH42	4" x 4"	1/4"	#9 x 1"
RH45	4" x 4"	5/8"	#9 x 1"

**Stock Finish:** USP, US2D, US3, US3/4, US4, US5, US10B, US12P, US15, US15A, US19, US26, US26D

**\* Factory Special Order:** Satin Nickel non-brush (US15S)  
Satin Chrome non-brush (US26S)

## Ball Bearing

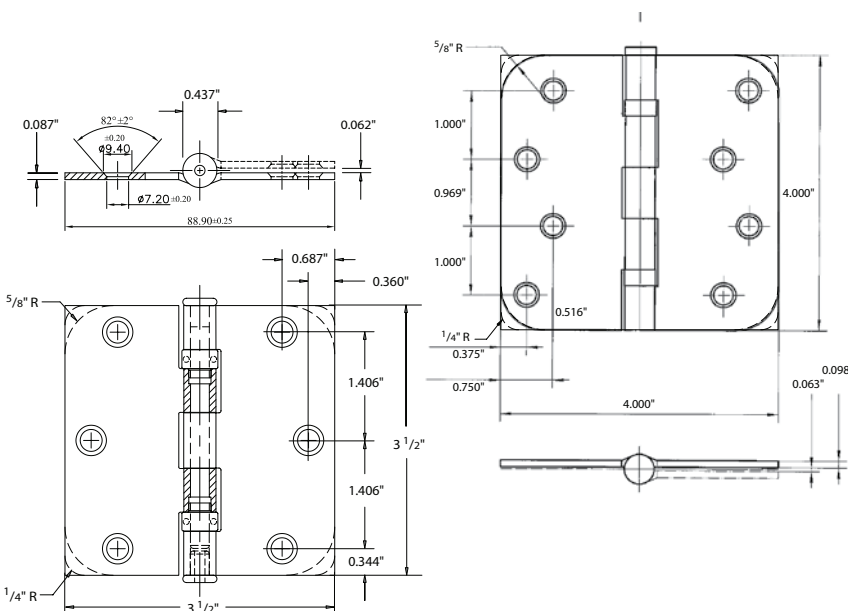
1/4" radius corner or 5/8" radius corner

- 3-1/2" and 4" Full mortise hinge
- 5 knuckles, 2 bearing balls design
- Steel base metal
- Gauge: 3-1/2" 0.087" (2.2mm)  
4" 0.098" (2.5mm)

CODE	SIZE	RADIUS	SCREW
RH62	3-1/2" x 3-1/2"	1/4"	#9 x 3/4"
RH65	3-1/2" x 3-1/2"	5/8"	#9 x 3/4"
RH72	4" x 4"	1/4"	#9 x 1"
RH75	4" x 4"	5/8"	#9 x 1"

**Stock Finish:** US3, US4, US5, US10B, US15, US15A, US26, US26D

**\* Factory Special Order:** Satin Nickel non-brush (US15S)  
Satin Chrome non-brush (US26S)



### OPTIONS

- #9 x 3/4" or #9 x 1" wood screw
- Non-Removable pin (N.R.P.)
- Box pack (Prefix **RHB** instead of RH)

# Residential Hinges

## BENCHMARK

### Plain Bearing

5 knuckle,

5/8" radius corner

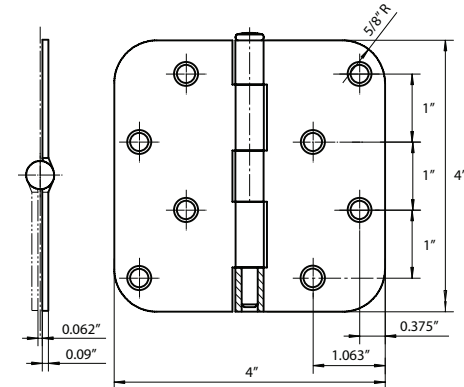
- 4" Full mortise hinge
- Steel base metal
- Gauge: 0.09" (2.3mm)

CODE	SIZE	RADIUS	SCREW
BH45	4" x 4"	5/8"	#9 x 1"

**Stock Finish:** USP, US3, US4, US26D

#### OPTIONS

- #9 x 3/4" wood screw
- Non-Removable pin (N.R.P.)
- Box pack (Prefix BHB instead of BH)



## THERMA-TRU

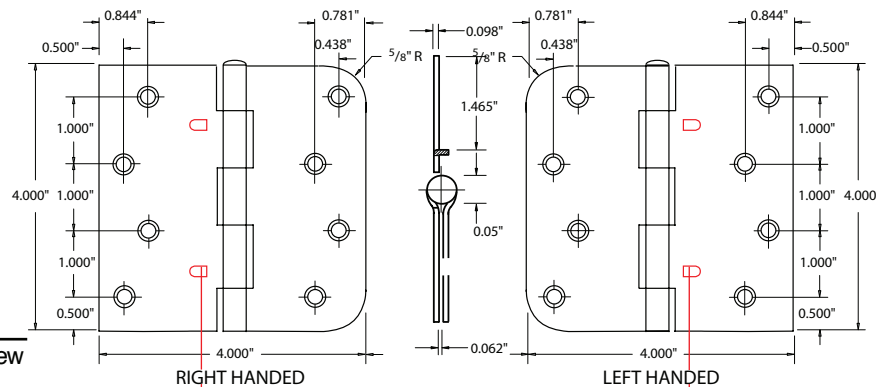
### Plain Bearing

5 knuckle, jamb leaf 5/8" radius, door leaf square

- 4" Full mortise hinge
- Steel base metal
- Gauge: 0.098" (2.5mm)

CODE	SIZE	RADIUS	SCREW
RH48	4" x 4"	5/8" Radius x Square	#10 x 1/2" Machine Screw
		(with Self Aligning Tabs)	#10 x 3/4" Wood Screw

**Stock Finish:** USP, US2D, US3, US4, US10B, US15, US15A, US26D



## MASONITE CASTLEGATE

### Plain Bearing

5 knuckle, jamb leaf 5/8" radius, door leaf square

- 4" Full mortise hinge
- Steel base metal
- Gauge: 0.098" (2.5mm)

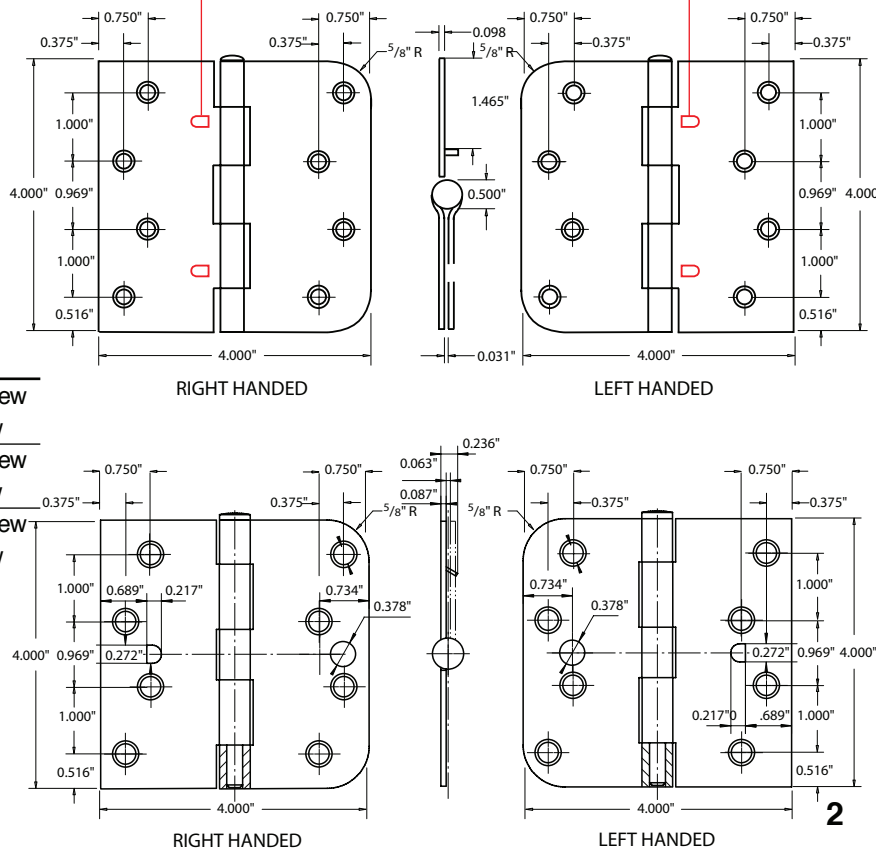
CODE	SIZE	RADIUS	SCREW
RH40	4" x 4"	5/8" Radius x Square	#10 x 1/2" Machine Screw
			#10 x 3/4" Wood Screw
RH41	4" x 4"	5/8" Radius x Square	#10 x 1/2" Machine Screw
		(with Self Aligning Tabs)	#10 x 3/4" Wood Screw
SB40	4" x 4"	5/8" Radius x Square	#10 x 1/2" Machine Screw
		(with Safety Buckle)	#10 x 3/4" Wood Screw

**Stock Finish:** USP, US2D, US3, US3/4, US4, US10B, US15, US15A, US26D

\* Finish may not be available for all items, please refer to price book for stock finish availability.

#### OPTIONS

- #10 x 2" wood screw (limited color)
- #10 x 3/4" wood screw (limited color)
- Non-Removable pin (N.R.P.)
- Box pack (Prefix RHB instead of RH)



# Spring Hinges



**ANSI GRADE 1**  
**ANSI A156.17**  
 Exceeds 1,000,000 cycles



for Fire Door applications  
 UL10C Positive Pressure  
 Rated. Conforms to UBC  
 7-2 (1997). (Uniform  
 Building Code Standard)

**SP4510**  
**US10B**

## Standard Spring Hinge

- Full Mortise, Single Acting, template mounting hole pattern (ANSI A156.7)
- Box Pack  
 Furnished with screws and Allen wrench

CODE	SIZE	RADIUS	MATERIAL	GAUGE
SP32	3-1/2" x 3-1/2"	1/4"	Steel	0.106" (2.7mm)
SP35	3-1/2" x 3-1/2"	5/8"	Steel	0.106" (2.7mm)
SP41	4" x 4"	Square	Steel	0.106" (2.7mm)
SP42	4" x 4"	1/4"	Steel	0.106" (2.7mm)
SP45	4" x 4"	5/8"	Steel	0.106" (2.7mm)
SP55	4-1/2" x 4-1/2"	Square	Steel	0.134" (3.4mm)
SP5532	4-1/2" x 4-1/2"	Square	Stainless Steel	0.134" (3.4mm)

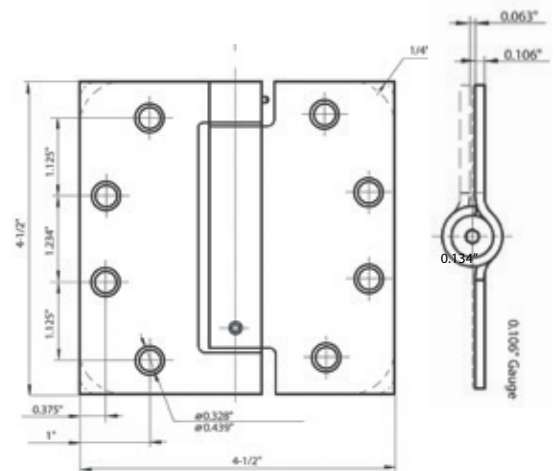
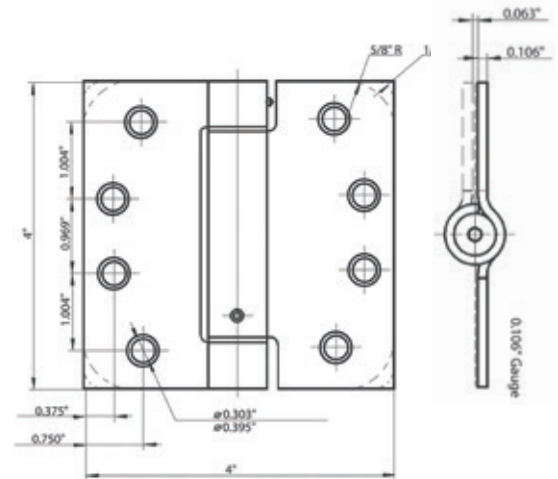
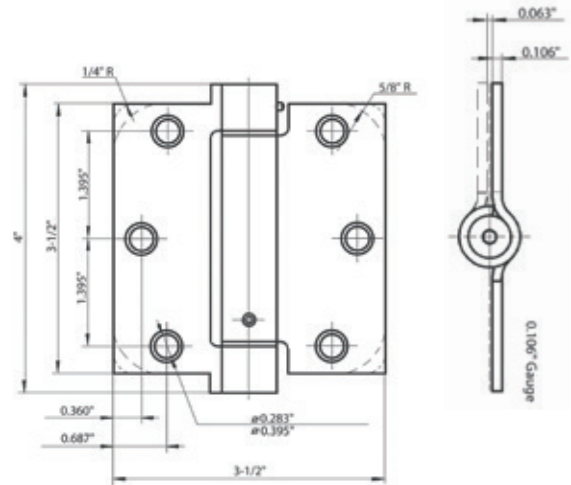
**Stock Finish:** USP, US3, US4, US10B,  
 US15, US15A, US26, US26D, US32D

\* Finish may not be available for all items,  
 please refer to price book for stock finish availability.

3-1/2" x 3-1/2"	.....#10 x 1/2" Machine Screw (10-24NC)
.....	.....#10 x 3/4" Wood Screw
4" x 4"	.....#10 x 1/2" Machine Screw (12-24NC)
.....	.....#10 x 1" Wood Screw
4-1/2" x 4-1/2"	.....#12 x 1/2" Machine Screw (12-24NC)
.....	.....#12 x 1-1/4" Wood Screw

\* NFPA requires a minimum of two (2) spring hinges on labeled doors.

\*\* For fire doors refer to NFPA-80.



# Spring Hinges

## ANSI GRADE 1

### ANSI A156.17

Exceeds 1,000,000 cycles



LISTED

for Fire Door applications  
UL10C Positive Pressure  
Rated. Conforms to UBC  
7-2 (1997). (Uniform  
Building Code Standard)

## RESIDENTIAL SPRING HINGE

- Full Mortise, Single Acting  
Residential mounting hole pattern

- Box Pack

Furnished with screws and Allen wrench

CODE	SIZE	RADIUS	MATERIAL	GAUGE
RS45	4" x 4"	5/8"	Steel	0.106" (2.7mm)

Stock Finish: USP, US2D, US3, US3/4, US4, US10B, US15, US15A, US26D

## BENCHMARK SPRING HINGE

- Full Mortise, Single Acting  
Residential mounting hole pattern

- Box Pack

Furnished with screws and Allen wrench

CODE	SIZE	RADIUS	MATERIAL	GAUGE
BS45	4" x 4"	5/8"	Steel	0.106" (2.7mm)

Stock Finish: USP, US3, US4, US26D

## CASTLEGATE SPRING HINGE

- Full Mortise, Single Acting
- Box Pack

CODE	SIZE	RADIUS	MATERIAL	GAUGE
CS40	4" x 4"	5/8"	Steel	0.106" (2.7mm)

Stock Finish: USP, US2D, US3, US3/4, US10B, US15, US15A, US26D

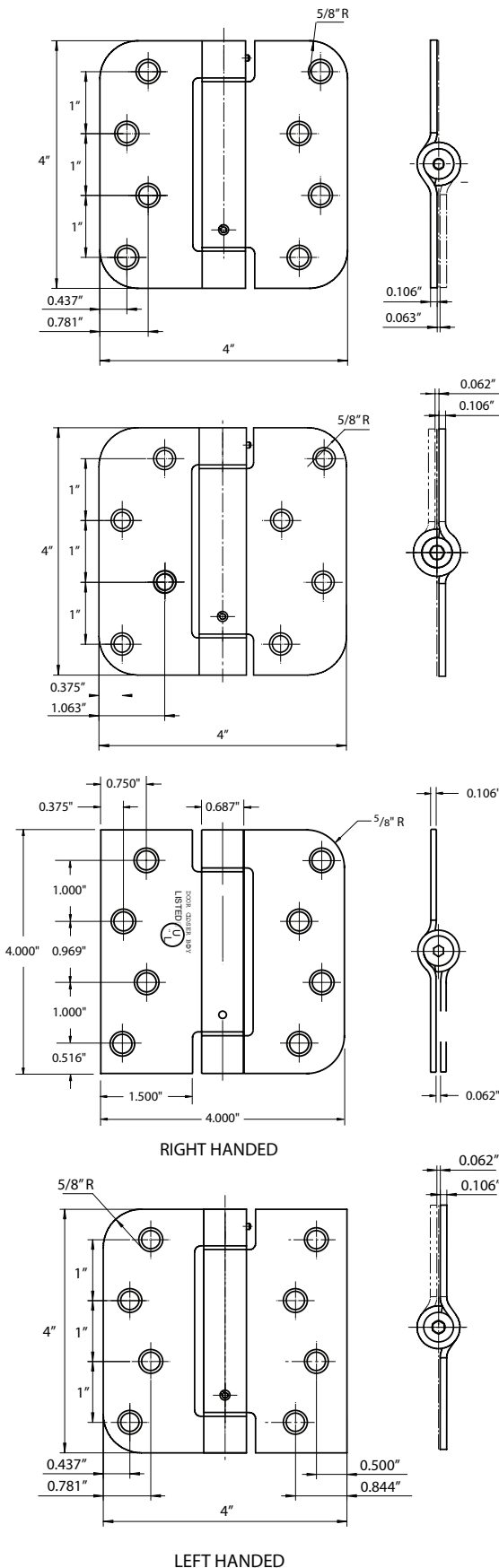
## THERMA-TRU SPRING HINGE

- Full Mortise, Single Acting
- Box Pack

Furnished with screws and hex wrench

CODE	SIZE	RADIUS	MATERIAL	GAUGE
TS48	4" x 4"	5/8"	Steel	0.106" (2.7mm)

Stock Finish: USP, US2D, US3, US3/4, US4, US10B, US15, US15A, US26D



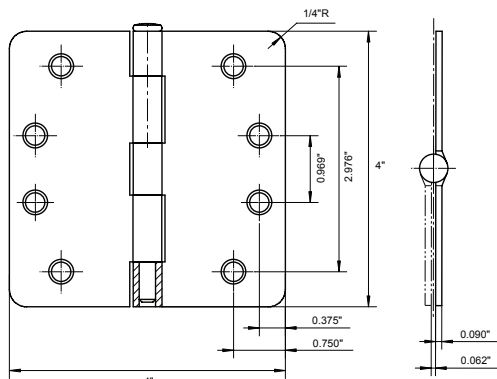


# Commercial Hinges

**All commercial Hinges are TIMELY template**

## LIGHT COMMERCIAL Plain Bearing

- 4" Full mortise hinge
- Full Mortise, template (ANSI A156.7)
- Steel

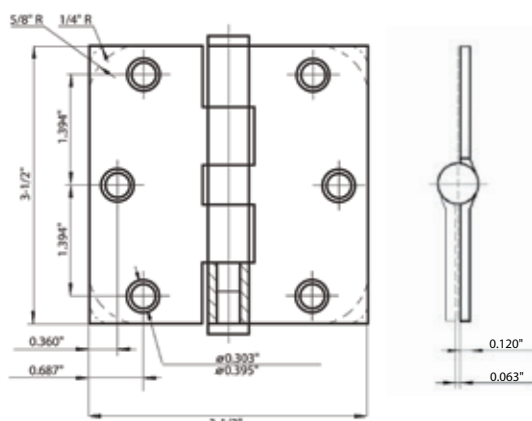


CODE	SIZE	RADIUS	GAUGE	SCREW
RH42	4" x 4"	1/4"	0.09" (2.3mm)	#9 x 1"

**Stock Finish:** US4, Duro, US26D

## STANDARD COMMERCIAL Plain Bearing

- Non-rising removable pin with button tip and plug
- Full Mortise, template (ANSI A156.7)
- Steel



CODE	SIZE	RADIUS	MATERIAL	GAUGE	TYPE
CH350	3-1/2" x 3-1/2"	Square	Steel	0.12" (3.1mm)	
CH320	3-1/2" x 3-1/2"	1/4"	Steel	0.12" (3.1mm)	
CH400	4" x 4"	Square	Steel	0.13" (3.3mm)	
CH402	4" x 4"	1/4"	Steel	0.13" (3.3mm)	
CH405	4" x 4"	5/8"	Steel	0.13" (3.3mm)	
CH450	4-1/2" x 4-1/2"	Square	Steel	0.134" (3.4mm)	
CN350	3-1/2" x 3-1/2"	Square	Steel	0.12" (3.1mm)	N.R.P.
CN400	4" x 4"	Square	Steel	0.13" (3.3mm)	N.R.P.
CN402	4" x 4"	1/4"	Steel	0.13" (3.3mm)	N.R.P.
CN405	4" x 4"	5/8"	Steel	0.13" (3.3mm)	N.R.P.
CN450	4-1/2" x 4-1/2"	Square	Steel	0.134" (3.4mm)	N.R.P.

**Stock Finish:** USP, US3, US4, US10B, US26, US26D

\* Finish may not be available for all items,  
please refer to price book for stock finish availability.

- Brass

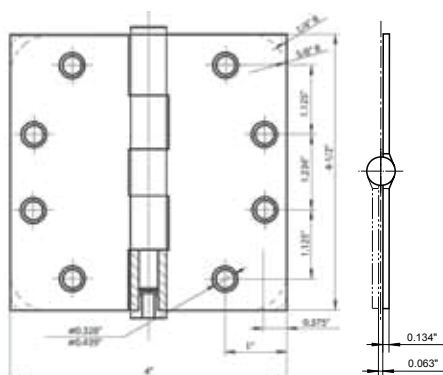
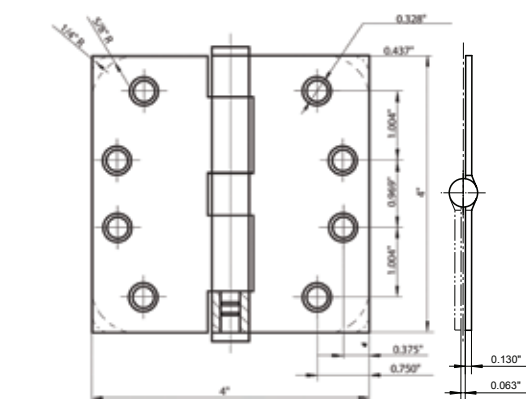
CODE	SIZE	RADIUS	MATERIAL	GAUGE	TYPE
193503	3-1/2" x 3-1/2"	Square	Brass	0.12" (3.1mm)	
194003	4" x 4"	Square	Brass	0.13" (3.3mm)	
194203	4-1/2" x 4-1/2"	Square	Brass	0.13" (3.3mm)	
193553	3-1/2" x 3-1/2"	Square	Brass	0.12" (3.1mm)	N.R.P.
194053	4" x 4"	Square	Brass	0.13" (3.3mm)	N.R.P.
194253	4-1/2" x 4-1/2"	Square	Brass	0.13" (3.3mm)	N.R.P.

**Stock Finish:** US3

- Stainless Steel

CODE	SIZE	RADIUS	MATERIAL	GAUGE	TYPE
144209	4" x 4"	Square	Stainless Steel	0.13" (3.3mm)	
145058	4-1/2" x 4-1/2"	Square	Stainless Steel	0.13" (3.3mm)	
144259	4" x 4"	Square	Stainless Steel	0.13" (3.3mm)	N.R.P.
145558	4-1/2" x 4-1/2"	Square	Stainless Steel	0.13" (3.3mm)	N.R.P.

**Stock Finish:** US32D



# Commercial Hinges



CH4117  
US15

## Ball Bearing

- 5 Knuckles, 2 ball bearing
- Full Mortise, template (ANSI A156.7)
- Steel

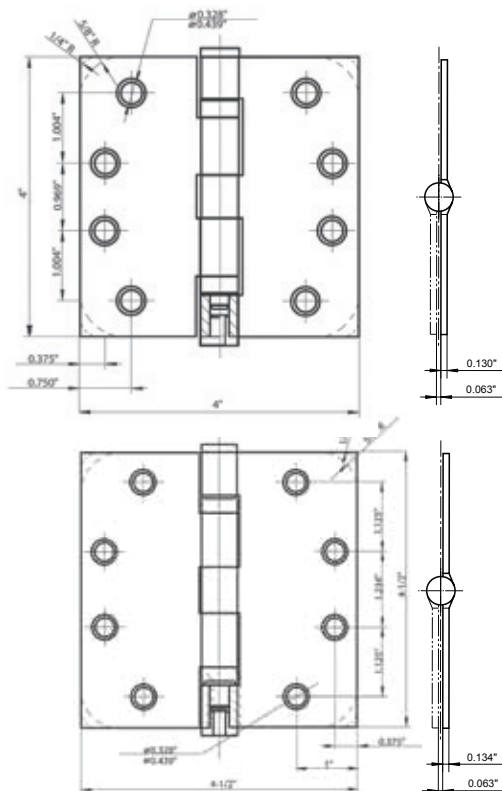


CODE	SIZE	RADIUS	MATERIAL	GAUGE	TYPE
CH401	4" x 4"	Square	Steel	0.13" (3.3mm)	
CH411	4" x 4"	1/4"	Steel	0.13" (3.3mm)	
CH415	4" x 4"	5/8"	Steel	0.13" (3.3mm)	
CH451	4-1/2" x 4-1/2"	Square	Steel	0.134" (3.4mm)	
CN350	3-1/2" x 3-1/2"	Square	Steel	0.12" (3.1mm)	N.R.P.
CN401	4" x 4"	Square	Steel	0.13" (3.3mm)	N.R.P.
CN411	4" x 4"	1/4"	Steel	0.13" (3.3mm)	N.R.P.
CN415	4" x 4"	5/8"	Steel	0.13" (3.3mm)	N.R.P.
CN451	4-1/2" x 4-1/2"	Square	Steel	0.134" (3.4mm)	N.R.P.

**Stock Finish:** USP, US3, US4, US5,

US10B, US15, US15A, US26, US26D

\* Finish may not be available for all items,  
please refer to price book for stock finish availability.



## • Brass & Stainless Steel

CODE	SIZE	RADIUS	MATERIAL	GAUGE	TYPE
194013	4" x 4"	Square	Brass	0.13" (3.3mm)	
194213	4-1/2" x 4-1/2"	Square	Brass	0.134" (3.4mm)	
194063	4" x 4"	Square	Brass	0.13" (3.3mm)	N.R.P.
194263	4-1/2" x 4-1/2"	Square	Brass	0.134" (3.4mm)	N.R.P.
144019	4" x 4"	Square	Stainless Steel	0.13" (3.3mm)	
146058	4-1/2" x 4-1/2"	Square	Stainless Steel	0.134" (3.4mm)	
144069	4" x 4"	Square	Stainless Steel	0.13" (3.3mm)	N.R.P.
146558	4-1/2" x 4-1/2"	Square	Stainless Steel	0.134" (3.4mm)	N.R.P.

**Stock Finish:** US3, US32D

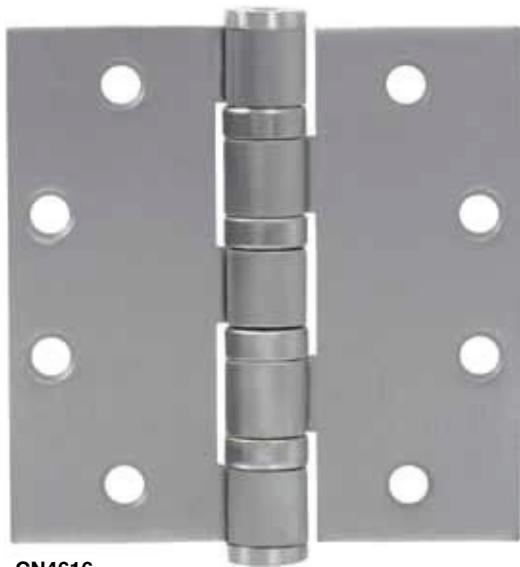
## COMMERCIAL ELECTRIFIED HINGES Energy Transfer



WIRE	SIZE	RADIUS	MATERIAL	GAUGE
4	4-1/2" x 4-1/2"	Square	Steel	0.134" (3.4mm)
4	4-1/2" x 4-1/2"	Square	Stainless Steel	0.134" (3.4mm)
6	4-1/2" x 4-1/2"	Square	Steel	0.134" (3.4mm)
6	4-1/2" x 4-1/2"	Square	Stainless Steel	0.134" (3.4mm)
8	4-1/2" x 4-1/2"	Square	Steel	0.134" (3.4mm)
8	4-1/2" x 4-1/2"	Square	Stainless Steel	0.134" (3.4mm)

**Stock Finish:** USP, US10B, US3, US26D, US26, US15, US32D

# Commercial Hinges



CN4616  
US26D

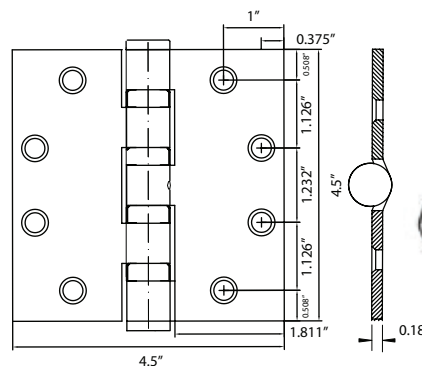
## Heavy Weight Ball Bearing



- 5 Knuckles, 4 ball bearing
- Full Mortise, template (ANSI A156.7)
- Steel

CODE	SIZE	RADIUS	MATERIAL	GAUGE	TYPE
CN4616	4-1/2" x 4-1/2"	Square	Steel	0.18" (4.6mm)	N.R.P.
CN4632	4-1/2" x 4-1/2"	Square	Stainless Steel	0.18" (4.6mm)	N.R.P.

Stock Finish: US26D, US32D



## COMMERCIAL ELECTRIFIED HINGES Energy Transfer



LISTED

WIRE	SIZE	RADIUS	MATERIAL	GAUGE	TYPE
4	4-1/2" x 4-1/2"	Square	Steel	0.18" (4.6mm)	N.R.P.
4	4-1/2" x 4-1/2"	Square	Stainless Steel	0.18" (4.6mm)	N.R.P.

Stock Finish: US26D, US32D



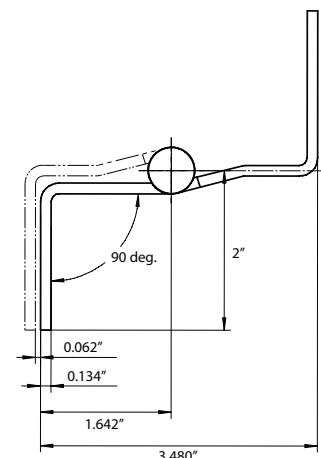
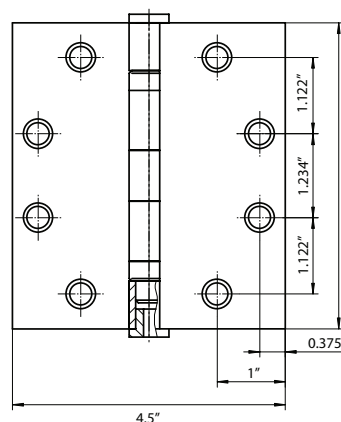
CH4516S  
US26D

## Standard Weight, Swing Clear

- 5 Knuckles, 2 ball bearing
- Dimensions & tolerances conform to ANSI - A156.7
- Packed with flat head wood and machine screws
- Steel

CODE	SIZE	RADIUS	MATERIAL	GAUGE
CH4516S	4-1/2" x 4-1/2"	Square	Steel	0.134" (3.4mm)

Stock Finish: US26D





# Trim Hardware

## BOLTS



**Surface Bolt**  
3" SB-103  
4" SB-104  
6" SB-106  
12" SB-112



**6" Flush Bolt**  
(Round) (Square)  
FBR-106 FBS-106



**7" Mortise in Flush Bolt**  
MFBR-07

**7" Mortise in Flush Bolt**  
MFBR-17 (Flip Type)



**18" Mortise-In Extension Flush Bolt with Extension Rod**  
MEFB-18 (Flip Type)



## DOOR KNOCKER, DOOR VIEWER & HOUSE NUMBER



**4" Door Knocker with Viewer**  
DK-04V



**6" Door Knocker with Viewer**  
BDK-06 BDK-06V



BDV-160



BDV-180



UDV-160



UDV-200

Meets ANSI A156.16 for L03222

Meets ANSI A156.16 for L03221

**Door Viewer**



**6" Solid Brass House Number**  
BHN-06

**4" Solid Brass House Number**  
BHN-04



**4" Metal House Number**  
MHN-04

**6" Black House Number**  
PHN-06

## CLOSET HARDWARE



**Drive-In Ball Catch**  
DBC-201



**Mortise Ball Catch**  
MBC-200



**Heavy Duty Jumbo Roller Catch**  
HRC-207  
Meets ANSI A156.16 for E09091



**Roller Catch**  
RC-32

**2-1/8" Dia. Drive-In Finger Pull**  
FPD-218



**2-1/8" Dia. Nail Finger Pull**  
FPN-218



**Bi-fold Knob**  
BFK-301



**Bi-fold Knob with Back Plate**  
BFK-351P



# Trim Hardware

## CLOSET HARDWARE



**Nylon Pole Socket**  
NPS-74  
\* for Pole Dia. 1-3/8"



**Metal Pole Socket**  
MPS-74



**H.D. Metal Pole Socket**  
HMPS-74



**Wood Pole Socket**  
WPS-74



**Adjustable Shelf  
& Rod Support**  
ASR-01



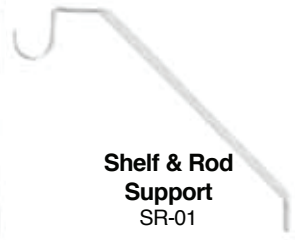
**Heavy Duty Shelf  
& Rod Support**  
HSR-01



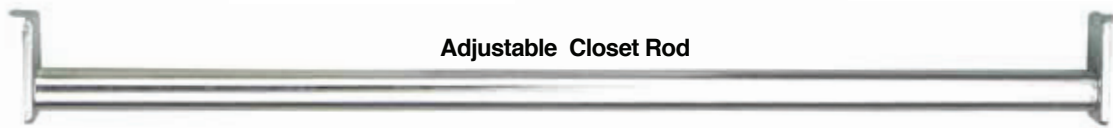
**Adjustable Shelf & Rod  
Support No Hook**  
ASR-01N



**Heavy Duty Shelf  
Support No Hook**  
HSR-01N



**Shelf & Rod  
Support**  
SR-01



**Adjustable Closet Rod**

SIZE: 18" ~ 30"  
30" ~ 48"  
48" ~ 72"  
72" ~ 96"  
72" ~ 120"  
96" ~ 150"

## DOOR STOP & DOOR GUARDS



**3" Spring  
Door Stop**  
SDS-03



**3" Jumbo Spring  
Door Stop**  
JSDS-30



**3-3/4" Jumbo Spring  
Door Stop**  
JSDS-34



**Hinge Pin Type  
Door Stop "K"**  
HPDS-23



**Hinge Pin Type  
Door Stop "A"**  
HPDS-29



**3" Rigid  
Door Stop**  
RDS-30



**3" H.D. Rigid  
Door Stop**  
HRDS-30



**3" Solid Brass  
Door Stop**  
BDS-30



**Door Saver**  
DS-22



**Half Leaf Hinge Pin  
Door Stop**  
HPDS-24



**Drop Down  
Door Holder**  
DDH-28



**Solid Brass  
Wall Door Stop**  
BWDS-12  
Meets ANSI A156.16  
for L01351



**Solid Brass  
Floor Door Stop**  
BFDS-12  
Meets ANSI  
A156.16  
for L01371



**Dome Stop  
Low Profile**  
DDSL-18



**Dome Stop  
High Profile**  
DDSH-26



**Universal  
Dome Stop**  
DDSU-32  
Meets ANSI  
A156.16 for L02141



**2-1/8" Gooseneck  
Door Stop**  
GDS-218



**2-3/4" Gooseneck  
Door Stop**  
GDS-234  
Meets ANSI  
A156.16 for L02131



**2-1/2"  
Wall Bumper**  
CWB-25  
Meets ANSI  
A156.16 for L22251



**1"  
Wall Bumper**  
CWB-01  
Meets ANSI  
A156.16 for L02101



**H.D. Wall Bumper  
Concave Type**  
CVB-63  
Meets ANSI  
A156.16 for L12251



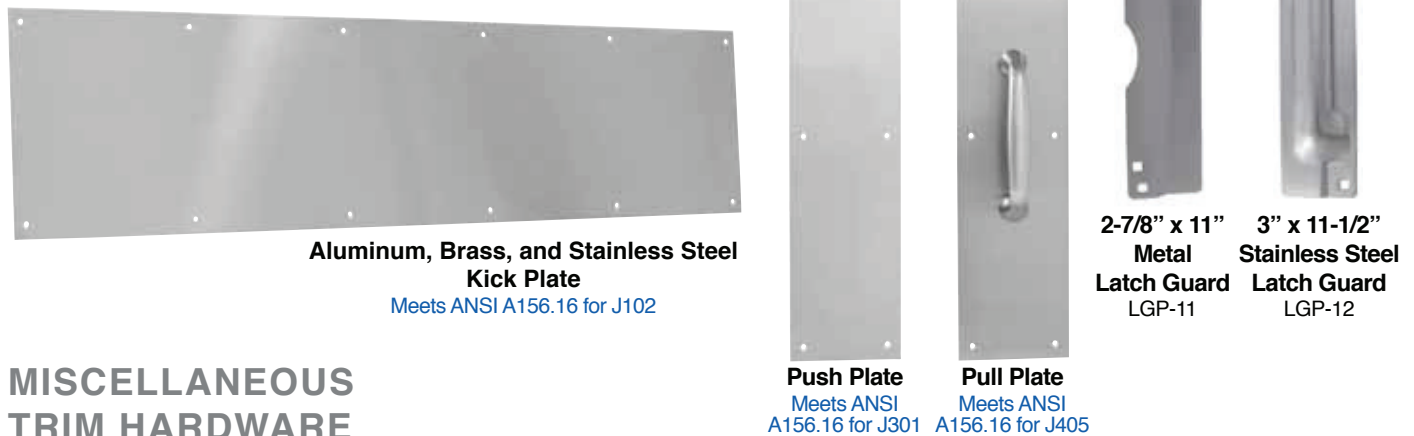
**H.D. Wall Bumper  
Convex Type**  
CXB-63  
Meets ANSI  
A156.16 for L12101

# Trim Hardware

## DOOR STOP & DOOR GUARDS



## KICK PLATE, PUSH PLATE, PULL PLATE & LATCH GUARD



## MISCELLANEOUS TRIM HARDWARE



## DOOR SIGNS & DOOR DECALS

\* Please refer to price book E-13 and E-14 for details



THIS DOOR TO REMAIN UNLOCKED DURING BUSINESS HOURS

THESE DOORS TO REMAIN UNLOCKED DURING BUSINESS HOURS

\* White Text on Black Background or Black Text on Clear Background are available.



Barn Door Hardware • Builders Hardware  
Commercial Hardware • Hinges • Jambs • Locksets  
Pocket Door Frames • PVC Products • Transoms

7 Mary Way • Hainesport, NJ 08036  
Tel: 1-609-261-2200 • Fax: 1-609-261-2233  
[liberty@libertybp.net](mailto:liberty@libertybp.net) • [libertybp.net](http://libertybp.net)

