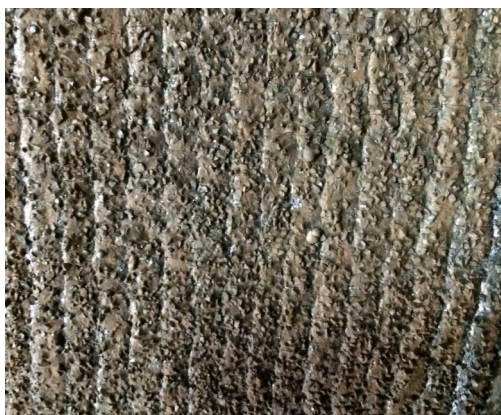




CHROME WELD W is a material designed to withstand your most severe abrasion applications. This overlay plate combines the benefits of our premium CHROME WELD chemistry along with the addition of tungsten carbide deposited throughout the matrix. Our manufacturing process produces a plate that has tungsten carbide dispersed throughout the entire matrix.

Mechanical Information

CHROME WELD W typical hardness range from 70-75 HRC depending upon deposit thickness. The surface of the plate is a composite of tungsten carbide combined with chromium iron carbides. The surface of the plate exhibits numerous hairline cracks which are essential to the performance of the plate and enable it to be formed, bent and rolled without damage.



TYPICAL CHEMISTRY %					
2 Layer Deposit					
Carbon (C)	Chromium (Cr)	Manganese (M)	Silicon (S)	Iron (Fe)	Tungsten (W)
4.5-6	25-30	0-2	0-2	Balance	35-40%