

The IPIX e-Series is an all-new, all-in-one computer system designed by the Datalux engineering team after listening to the most requested needs of our customers and partners.

"extra long run time!"

So we based the e-Series on the Intel Atom microprocessor for maximum energy efficiency. And just for good measure, we can add a proximity sensor that will automatically turn the display off when the user walks away from the computer.

"easy to clean!"

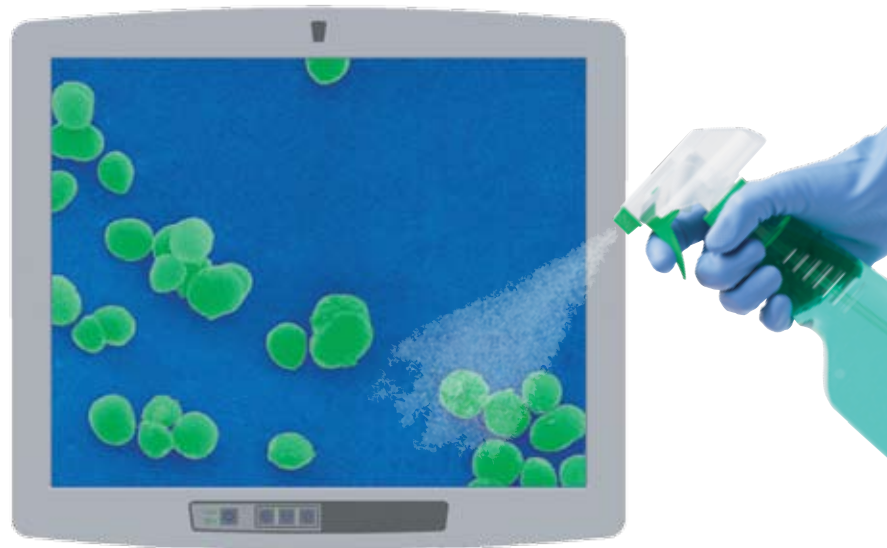
We sealed the front panel of the IPIX e-Series to IP-65 standards. And we designed the IPIX fanless, with no vents and with all ports either sealed or recessed under a drip guard to prevent the ingress of liquids.

"easy to service and reliable!"

We built an all-in-one to meet industry standards, and then added a shock-mounted HDD and a standard 3-year warranty. Access doors allow easy replacement of battery and HDDs.

"economical!"

Through listening to those who are most important to us, we made the IPIX e-Series all-in-one computer a great value!



IPIX **e**-SERIES

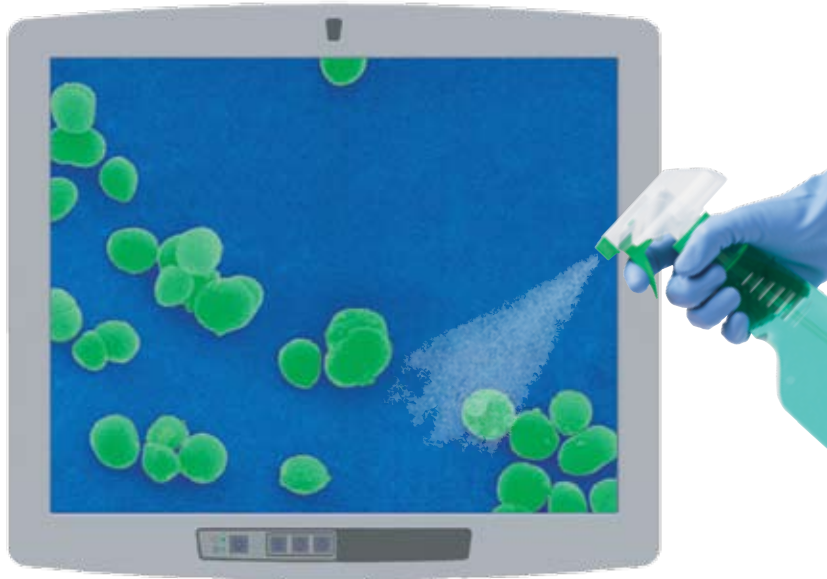
The new IPIX e-Series all-in-one computer system that has been designed specifically for healthcare professionals, but IT professionals will love it too!

- Power-efficient Intel Atom processor
- Removable/shock-mounted disk drive
- Supports Windows 7 client or thin client
- Slim design can be mounted almost anywhere
- Front panel sealed to IP-65 standards

IPIX e-Series options include:

- Solid State Drive (SSD)
- Resistive Touch Screen
- Bluetooth Wireless
- Internal 802.11abgn WiFi
- Integrated Camera
- Internal Li-ion Battery
- Proximity Sensor (energy saver)





Unique infection control solutions.

Attack microbial growth on the surface. All plastic molded parts on the IPIX e-Series computers contain an antimicrobial additive that releases silver ions to battle surface bacteria and stop them from spreading, multiplying or surviving.

Prevent circulation of bacteria in the air. Unlike fan-cooled units that can intake and exhaust dust and contaminants through their vents, the fanless IPIX is designed to prevent the intrusion of airborne dirt and germs by channeling heat away from critical internal components without the need for a cooling fan.

Safely disinfect the sealed case. The front panel of the IPIX e-Series is sealed to IP-65 standards. The IPIX is protected from liquids so that it can be sprayed and wiped down with disinfectants without risk of damaging the computer. Ports and connectors are recessed under a drip guard.

Impressive usability attributes.

Get more from your screen. To provide all the information needed for clinical applications, the IPIX e-Series includes a 19-inch SXGA resolution display. Plus, upgrade to the integrated 5-wire resistive touch screen for optimal usability with the assurance that healthcare associated infections can be prevented.

Stay connected everywhere. The IPIX e-Series can be optionally configured with an Intel 802.11 abgn internal wireless card and antenna. The Intel card provides optimal support for most security protocols. The e-Series can optionally include Bluetooth wireless to support a variety of Bluetooth peripheral devices.

Maximize your battery power. The IPIX e-Series computer was designed to be used in mobile applications where long battery life is crucial. Both the Intel Atom processor and an energy efficient 19" display were selected with that in mind, making the e-Series our most energy efficient 19" all-in-one computer! An optional internal Li-ion battery provides backup in a power outage.

Interface with ease. A protected, recessed block for all power, USB and other connectors provides a clean configuration that enables a single cable bundle. At only 2.1 inches thick and under 12 pounds, the IPIX e-Series easily adapts to most mobile carts, wall and desktop mounts with an industry-standard VESA mount.



IPIX e-SERIES SPECIFICATIONS

Processor

1.6 Ghz Intel® Atom™ N270 (512k L2 cache)

Operating System

Windows 7 Professional (optional downgrade to XP)
Ubuntu Linux

Memory

1024MB DDR2 SODIMM
2048MB DDR2 SODIMM (optional)

Hard Drive

160 GB minimum SATA HDD
SSD's and larger HDD's supported

Sound

Internal stereo speakers, 8 ohm, amplified
Integrated microphone
1 configurable 1/8" miniphone jack

Video

19" SXGA (1280x1024) color active matrix
Intel Integrated Graphics
Up to 224 MB video memory (shared)
1 SVGA analog video output, 15 pin HD D-sub

Ports

5 USB, Type A receptacles, USB 2.0 compliant
1 Serial, RS-232, 9-pin D-sub

Wired Network

10/100/1000 Base-T Ethernet (RJ-45)

PCI Expansion Slot

1-PCI Express minicard slot
(PCI Express options must be factory installed)

Power Requirements

15V DC
120V AC medical grade power supply (optional)

Size / Weight

17.3" x 14.8" x 2.1" / less than 12 pounds

Compliance (pending)

CE, FCC Class A, IEC-60601-1

Warranty

Standard 3-year, return-to-factory warranty

Options

Touch screen (5-wire resistive)
Internal 802.11 abgn wireless (uses PCI-E)
Internal rechargeable Lithium ion battery
Power-saving proximity sensor
Integrated Bluetooth wireless
Integrated 1.3MP camera