

# YZ 360 KIT OWNERS MANUAL

## CONTENTS

1. Parts contents
2. Fitting / Assembly
3. Important key points
4. Adjustments
5. Recommended settings
6. High performance tuning
7. Warranty
8. Appendix

**ÖHLINS RACING AB  
BOX 722  
S-194 27 UPPLANDS VÄSBY  
SWEDEN**

Telephone: Nat 0760-88030

Telefax: Nat 0760-88217

---

Int +46 760 88030

Int +46 760 88217

# 1. PARTS CONTENTS.

## YZ 360 KIT PARTS

PART NAME	PART NO.	QTY
CYLINDER	7001-01	1
HEAD CYLINDER	7002-01	1
PISTON	7003-01	1
PISTON RING	7004-01	2
PIN PISTON	7005-01 ※2	1
CIRCLIP	7006-01 ※1	2
O-RING L	7007-01	1
O-RING S	7008-01	1
ROD CONNECTING	7009-01	1
GASKET CYLINDER	7010-01 ※1	1
VALVE	7011-01	1
O-RING VALVE	7012-01	1
PLATE	7013-01	1
NUT	7014-01/02 ※3	1
STOP WASHER	7015-01	1
BOLT	7016-01	2

※1. YOU CAN USE YZ 250 STD PART INSTEAD.

※2. YOU CAN USE YZ 490 STD PART INSTEAD.

※3. YOU SHOULD USE 7014-02, WHEN YOU PUT YZ 360 KIT ON '88 YZ 250.

YAMAHA GENUINE PARTS

GROUPE A; YOU CAN USE THESE PARTS FROM YOUR STANDARD YZ 250.

GROUPE B; (ONLY RELEVANT WHEN FITTING YZ 360 KIT TO 1989).

IT IS NECESSARY TO OBTAIN THESE PARTS SEPARATELY AS THEY ARE NOT SUPPLIED WITH THE KIT.

PLEASE CONSULT YOUR YAMAHA DISTRIBUTOR.

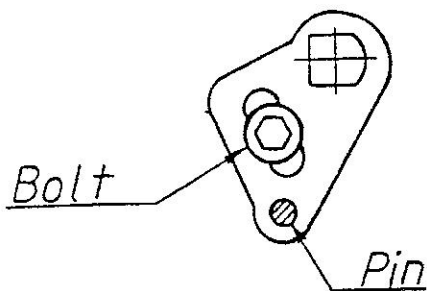
GROUPE A	BOLT STUD	90116-08394	4
	BOLT STUD	90116-08392	2
	PIN DOWEL	99510-10114	2
	NUT CROWN	90176-08026	6
	WASHER PLATE	90201-08087	6
	BEARING CYLINDRICAL	93310-418E9	1
GROUPE B	REED VALVE ASS'Y	56A-13610-01	1
	GASKET VALVE SEAT	39X-13621-01	1
	JOINT CARBURETTOR	2VM-13565-00	1

## 2. FITTING/ASSEMBLY.

PLEASE SEE YOUR OWNER'S SERVICE MANUAL. PAGE 3-71 - 3-78.

1. DISASSEMBLE THE 250 E/G.
2. TAKE OUT THE CRANK SHAFT ASS'Y.
3. DISASSEMBLE THE CRANK SHAFT.
4. ASSEMBLE THE CRANK SHAFT. PLEASE CHANGE CONNECTING ROD STD TO 7009-01.
5. CENTERIZATION OF CRANK SHAFT. PLEASE SET UP WITHIN 0,03.
6. ASSEMBLE CRANK CASE.\*SEE CAUTION 1.
7. ASSEMBLE THE 360 CYLINDER. PLEASE FOLLOW YOUR YZ 250 OWNERS SERVICE MANUAL.
8. ASSEMBLE THE POWER VALVE LINK WHEN YOU PUT THE PIN THROUGH THE PLATE (7013-01).

POWER VALVE POSITION IS AUTOMATICALLY DECIDED. THEN YOU TIGHTEN THE BOLT.



### 3. IMPORTANT KEY POINTS.

1. AFTER ASSEMBLING. PLEASE CHECK THE POWER VALVE MOVEMENT WITHOUT COVER ON BY RUNNING THE ENGINE.  
IF IT'S NOT MOVED ENOUGH. PLEASE SEE 4. ADJUSTMENT.

2. AFTER A FEW MINUTES RUNNING, PLEASE REFILL THE WATER IN THE RADIATOR.

3. EXHAUST PIPE & SILENCER.

YOU CAN PUT THE FOLLOWING PIPES:

1. '88 YZ 250 STD
2. '89 YZ 250 STD
3. SCHLECHTEN PIPE FOR YZ 360
4. OTHER PIPES FOR YZ 360

THE 360 KIT HAS BEEN DESIGNED TO RUN USING THE STANDARD YAMAHA YZ 250 EXHAUST PIPES. HOWEVER, IF YOU REQUIRE A DIFFERENT ENGINE CHARACTER, IT IS POSSIBLE TO CHANGE EXHAUST PIPES TO ONE FROM AN "AFTER-MARKET" MANUFACTURER ONE SUCH PIPE WE CAN RECOMMEND IS MANUFACTURED BY SCHLECHTEN. FOR MORE DETAILS CONSULT YOUR YAMAHA DISTRIBUTOR.

4. IF YOU FEEL LACK OF TOP RPM POWER, PLEASE CHECK THE POWER VALVE MOVEMENT. SEE 1. OR IF REQUIRED YOU CAN ALTER THE E/G CHARACTER (MORE HIGH-RPM TYPE). SEE 6. HIGH PERFORMANCE TUNING.

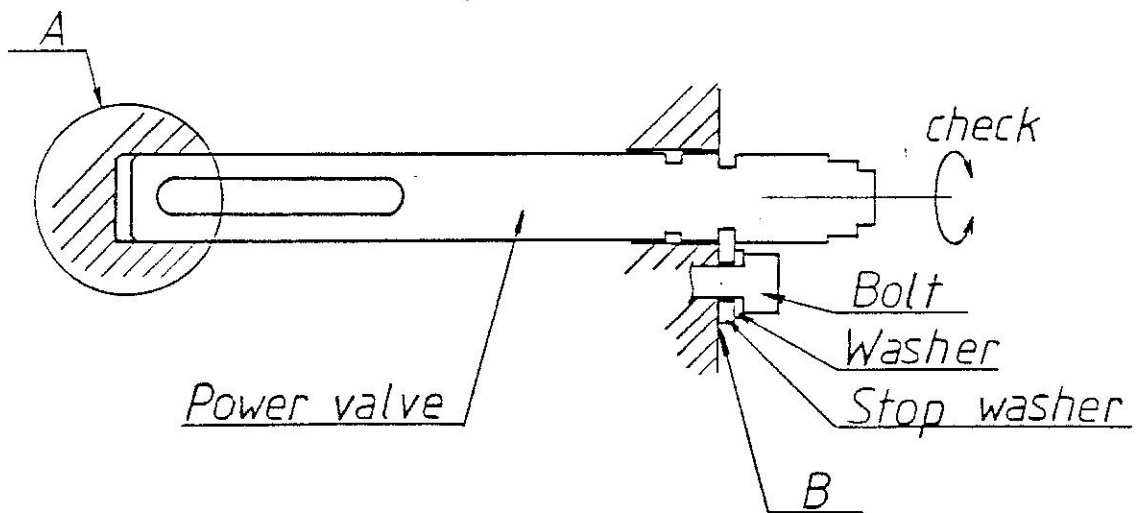
5. WHEN YOU PARTICIPATE IN MOTOCROSS RACES OR ENDURO RACES, ACCORDING TO EACH REGULATION, PLEASE ORGANIZE THE MACHINE MODIFICATION

WEIGHT SITUATION  
NOIZE SITUATION  
DISPLACEMENT SITUATION  
OTHERS

#### 4. ADJUSTMENTS.

AFTER TIGHTING THE BOLT WITH THE STOP WASHER, PLEASE CHECK THE POWER VALVE ROTATION. IF IT'S NOT SMOOTH ENOUGH, PLEASE CLEAN UP THE BOTTOM OF THE POWER VALVE HOLE. (A)

IF STILL NOT IMPROVED, PLEASE PUT A WASHER BETWEEN CYLINDER AND STOP WASHER. (B)



5. RECOMMENDED SETTINGS.

1. CARBURETTOR, YOU CAN PUT THE FOLLOWING CARBURETTOR:

1. '88 YZ 250 STD.
2. '89 YZ 250 STD.

RECOMMENDED SETTINGS ARE:

'88 CARBURETTOR

	STD	HARD	SAND
MJ	370	370	380
NJ	R-4	R-4	R-4
PJ	45	60	70-75
JN	6F62-2	6F62-3	6F62-3
CA	3.0	3.0	3.0
AS	1 ½	1 ½	1 ½

'89 CARBURETTOR

	STD	HARD	SAND
MJ	340	360	380
NJ	R-1	←	←
PJ	60	65	75
JN	6DJ8-63-3	6DJ8-63-4	6DJ8-63-4
CA	4.0	4.0	4.0
AS	1 ½	1 ½	1 ½

2. IGNITION TIMING.

SAND - B.T.D.C. 1.1 MM (STD)

HARD - B.T.D.C. 1.3 MM

3. GEARING.

HARD TRACK ~ 49/15 ~

SAND TRACK ~ 49/14 ~



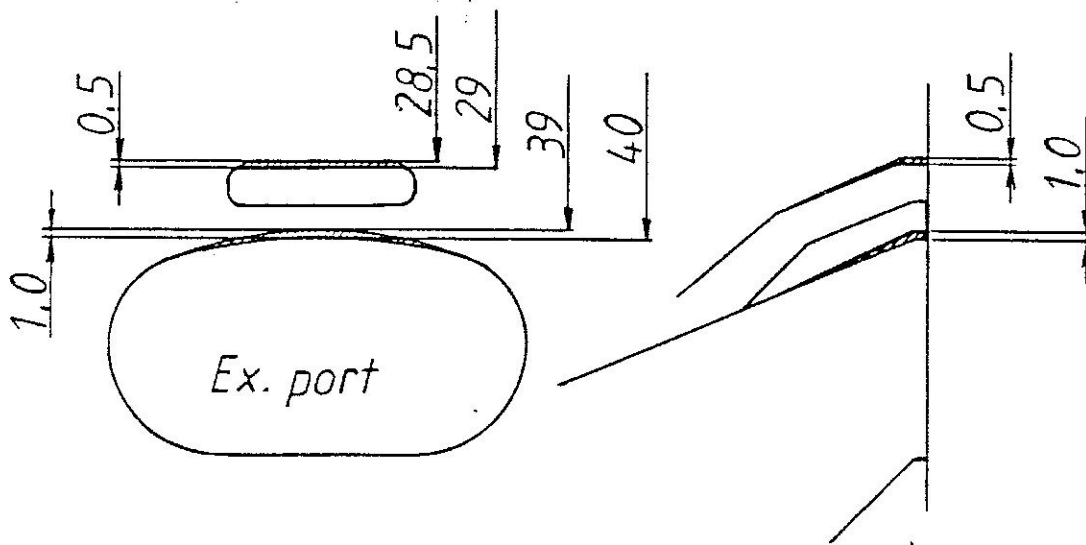
## 6. HIGH PERFORMANCE TUNING.

IF YOU GRIND THE EXHAUST PORT,

( 1 MM ON TOP OF THE MAIN EXHAUST PORT)

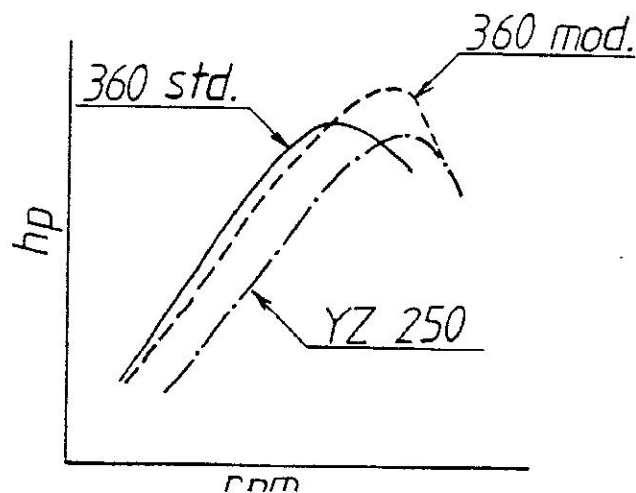
(0,5 MM ON TOP OF THE SUB EXHAUST PORT)

YOU CAN INCREASE THE TOP-POWER AND RPM.



CAUTION:

THE YZ 360 KIT HAS BEEN DESIGNED AS STANDARD TO GIVE THE OPTIMUM BALANCE BETWEEN GOOD ENGINE PERFORMANCE AND EXCELLENT RELIABILITY. ANY TUNING-UP MAY RESULT IN A REDUCTION OF RELIABILITY OF THE ENGINE COMPONENTS.



7. WARRANTY.

THIS KIT IS DESIGNED FOR RACING PURPOSES AND AS SUCH NO WARRANTY IS EITHER IMPLIED OR WILL BE GIVEN.

8. APPENDIX.

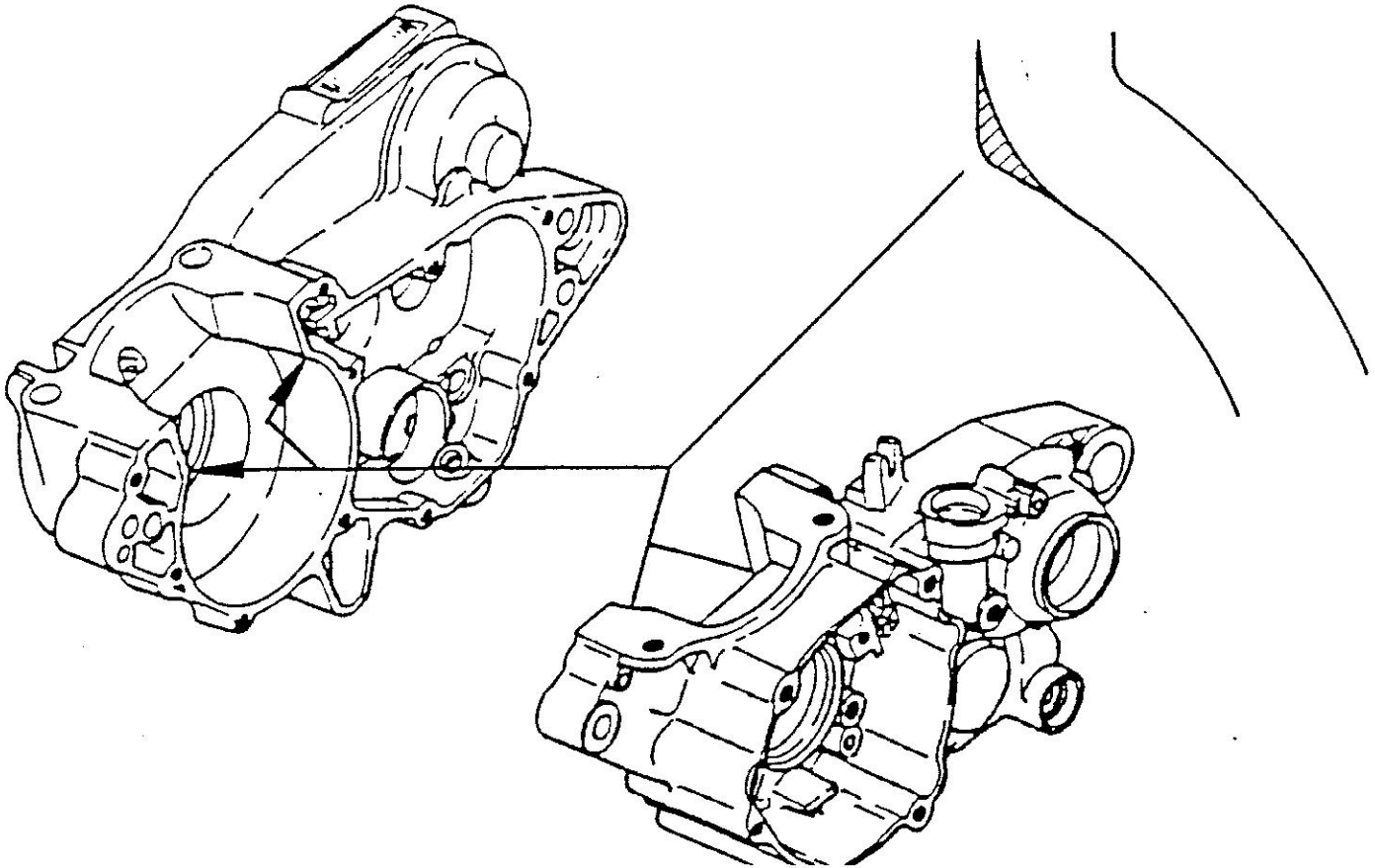
1. CAUTION        1
2. ORIGINAL INFORMATION
3. KIT PART INFORMATION

YZ 360-kit

CAUTION!

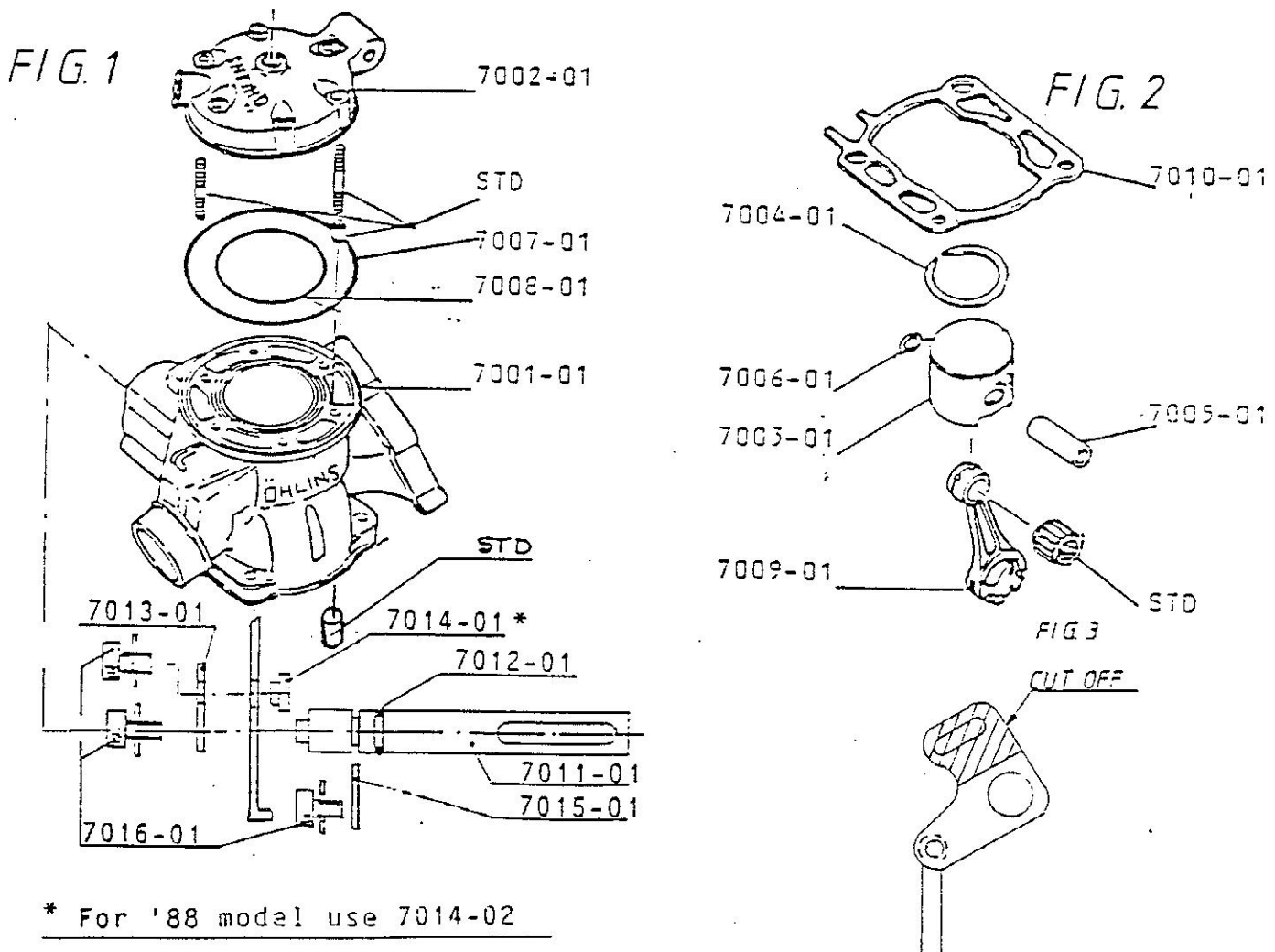
IN SOME ENGINES IT IS NECESSARY TO  
MODIFY THE CRANKCASE. BEFORE ASSEMBLING  
THE CRANKCASE, PLEASE CHECK THE CLEARANCE  
BETWEEN THE CON-ROD AND THE CRANKCASE.

Put the crank assembly with the piston,  
on the right side of the crankcase, and  
then put the cylinder on. Now you can see  
the clearance as shown in the picture.  
Check the left side crankcase too.  
In case of contact it is necessary too  
grind. See arrows at picture.



YAMAHA - ÖHLINS 360CC CYLINDER KIT  
ASSEMBLY INSTRUCTIONS

1. Please follow instructions in your Yamaha Owners Manual when dis-assembling the 250 CC cylinder.
2. For assembling of the new con-rod you must split your engien. Please contact you Yamaha service dealer, while some special tools are required.
3. Use the cylinder bolts (6 pcs) guide sleeves (2 pcs for the cylinder and 2 pcs for the head) from your 250 CC cylinder. Parts marked "STD" on figure 1.
4. When assembling the O-rings between the cylinder and the head, please make sure that the O-rings are fitted exactly in the grooves.
5. When fitting the cylinder on -88 model, a modification of the power valve link is necessary. Please see figure 3.
6. When fitting the cylinder of -89 model, please use reed valve assy (56A-13610-01) and carburettor joint (2VM-13565-00) from -88 YZ 250 CC.
7. Ignition timing should be the same as 250 CC. Please fine tune the carburettor setting as normal. (STD setting is recommend).



YZ 360 CC ENGINE KIT PARTS INFORMATION

PART NAME	QTY	OHLINS OR STD	PART NO.
HEAD CYLINDER	1	OHLINS	7002-01
BOLT STUD	4	YZ 250 STD	90116-08394
BOLT STUD	2	"-	90116-08392
PIN DOWEL	2	"-	99510-10114
NUT CROWN	6	"-	90176-08026
WASHER PLATE	6	"-	90201-08087
CYLINDER	1	OHLINS	7001-01
VALVE	1	"-	7011-01
O-RING VALVE	1	"-	7012-01
STOP WASHER	1	"-	7015-01
PLATE	1	"-	7013-01
NUT	1	"-	7014-01
BOLT	2	"-	7016-01
O-RING L	1	"-	7007-01
O-RING S	1	"-	7008-01
GASKET CYLINDER	1	YZ250 STD/ OHLINS	2VM-11351-00 7010-01
PISTON	1	OHLINS	7003-01
PISTON RING	2	"-	7004-01
PIN PISTON	1	YZ490 STD/ OHLINS	275-11633-00 7005-01
CIRCLIP	2	YZ250 STD/ OHLINS	93450-19052 7006-01
BEARING CYLINDRICAL	1	YZ 250 STD	93310-418E9
PIN CRANK	1	"-	2X4-11681-00
ROD CONNECTING	1	OHLINS	7009-01
BEARING CYLINDRICAL	1	YZ 250 STD	93310-425T1
WASHER	2	"-	90209-25085
REED VALVE ASS'Y	1	'88 YZ 250 STD	56A-13610-01
GASKET VALVE SEAT	1	"-	39X-13621-01
JOINT CARBURETTOR	1	"-	2VM-13565-00