



INTRODUCING JACQUELINE OUR NEWEST SHOW HOME

This 2,045 sq ft two-storey might possibly be the perfect family home. Working equally well as a Craftsman or a Modern French Country exterior, Jacqueline delivers style and functionality with a bright and open main floor and either a three or four bedroom second floor. The main floor features a well-planned kitchen, dining and great room, beautiful architectural windows and cased entries and a smart mudroom for life's clutter. Second floor laundry and a luxurious ensuite and walk in closet come with both the three and four bedroom option.

OUR JACQUELINE SHOW HOME IS BUILT
AT 318 DAGNONE CRESCENT.

OUR SIGNATURE PLANS

Maison Design+Build has created a series of signature floor plans designed to inspire you.

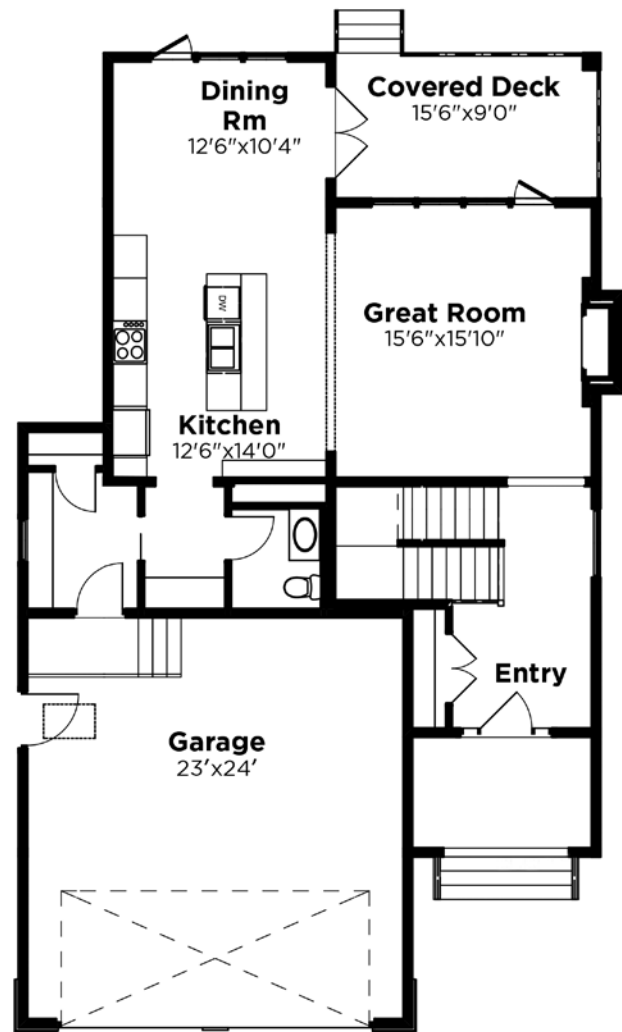
Each of our plans feature the best of curb appeal, functionality and natural light. Our homes have been carefully planned with distinct entry, living and sleeping spaces, large kitchens and dining areas, beautiful sight lines, luxurious bathrooms, and utility zones that offer storage solutions for life's clutter.

We believe that every home should tell the story of the family that lives there. Our build starts with getting to know you and understanding your style. Choose one of our thoughtfully designed signature plans and personalize it by selecting your preferred layout and exterior. We'll incorporate best practices in energy efficiency and construction techniques, and help you select your interior features and finishes from a carefully edited menu to create a home that feels timeless and fresh.

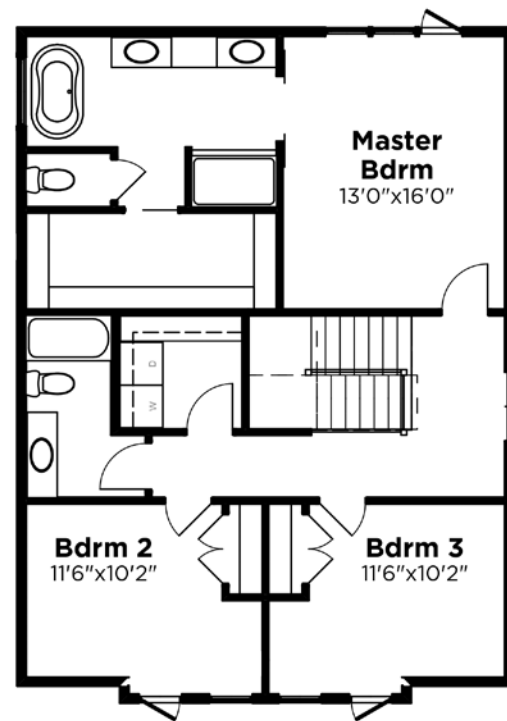


FLOOR PLANS

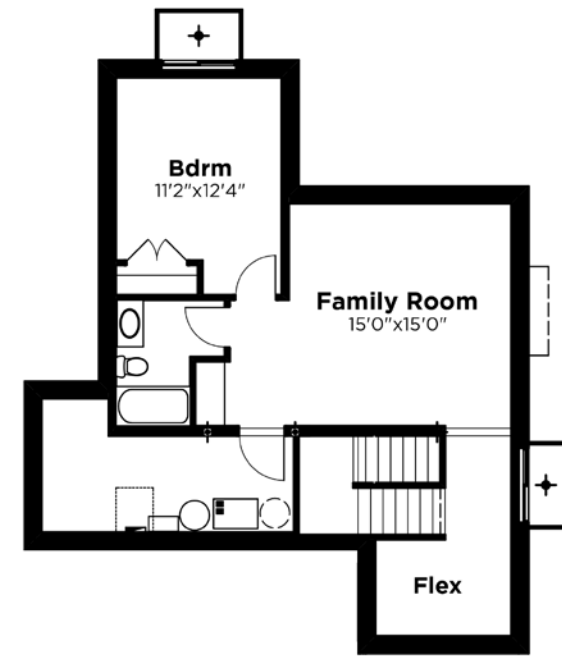
MAIN FLOOR PLAN: 970 SQ FT



SECOND FLOOR PLAN: 1075 SQ FT



BASEMENT PLAN: 665 SQ FT



EXTERIOR ELEVATION: MODERN FRENCH COUNTRY



Jacqueline is the perfect family home. The main floor offers smart family, friendly design and the second floor can be customized to include three or four bedrooms, a luxurious ensuite with soaker tub, or a connected laundry and ensuite closet.

