

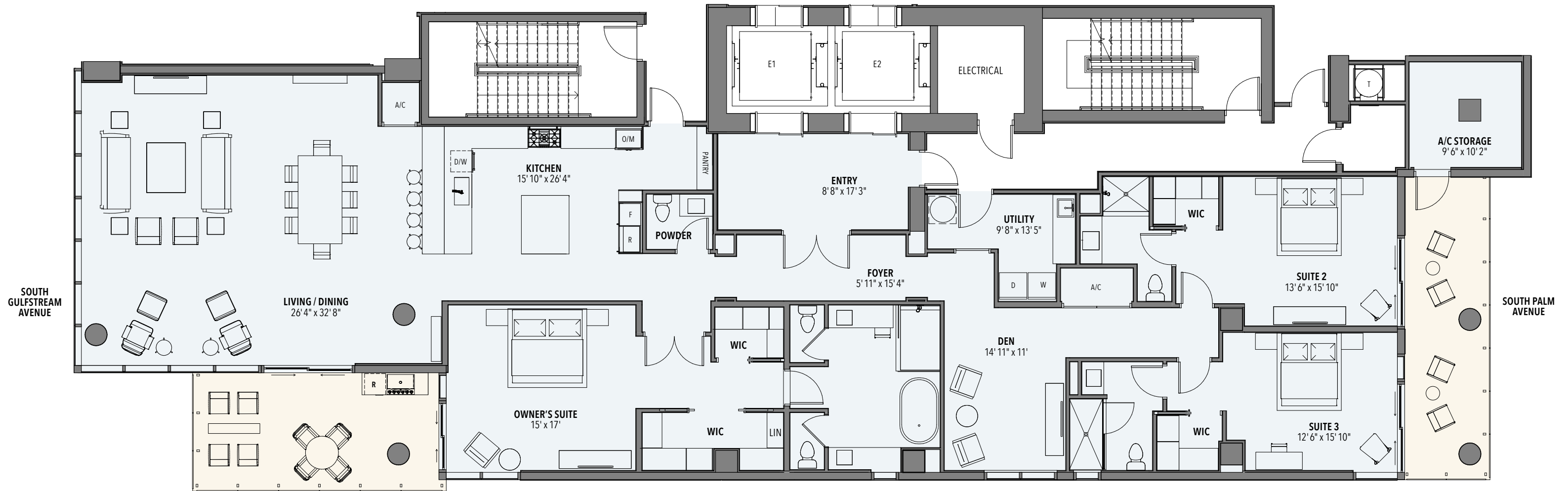
# SOUTH RESIDENCES

## LEVELS 4-10

3 Bedroom | Den | 3.5 Bath

3,681<sup>SF</sup> Interior  
455<sup>SF</sup> Terraces

4,136<sup>SF</sup> Total Living Area



### OWNER'S SUITE

BATH: 15' x 13' 7"  
WIC: 5' 3" x 12' 10"  
WIC: 4' 7" x 6' 2"

### SUITE 2

BATH: 11' 4" x 8' 3"  
WIC: 4' 5" x 5' 9"

### SUITE 3

BATH: 9' 10" x 8' 5"  
WIC: 5' x 5' 11"

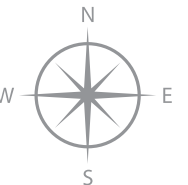
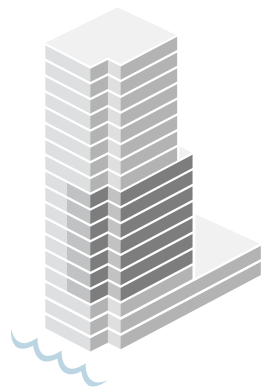
### TERRACES

MAIN: 10' 3" x 21' 10"  
SUITE 2/3: 27' 1" x 7' 4"

### POWDER

5' x 6'

All dimensions are approximate



ORAL REPRESENTATIONS CANNOT BE RELIED UPON AS CORRECTLY STATING REPRESENTATIONS OF THE DEVELOPER. FOR CORRECT REPRESENTATIONS, MAKE REFERENCE TO THIS BROCHURE AND TO THE DOCUMENTS REQUIRED BY SECTION 718.503, FLORIDA STATUTES, TO BE FURNISHED BY A DEVELOPER TO A BUYER OR LESSEE.

Plans, materials and specifications are subject to architectural and other revisions at the sole discretion of the developer, builder or architect, or as may be requested by law. Floor plans may not be to scale. Any furniture, appliances or decorator ready items depicted herein are shown for artistic and illustrative purposes only and are not included in the purchase and sale of the condominium unit. There are various methods for calculating the total square footage of a condominium unit, and depending on the method of calculation, the quoted square footage of a condominium unit may vary. The dimensions stated in this brochure are measured to the exterior boundaries of the exterior walls of the condominium building and the centerline of interior demising walls and also include air conditioned private foyer and storage. This actual method of measurement results in a square foot calculation that is larger than the dimensions of the "Unit" as defined in the Declaration of Condominium for EPOCH, which generally excludes exterior walls and other structural components. All dimensions are approximate and all floor plans and development plans are subject to change. © Copyright 2018, Seaward Development.