

CALL TO ACTION

Silence Aloud, Inc. is a 501c3 charitable organization funded through charitable contributions from members, individuals and private foundations. HOW CAN YOU HELP?

SPEAK LOUD about abuse of ANY human being.

Empower yourself with knowledge and SPREAD THE WORD.

Stay active in local and regional politics and express your concerns to elected officials.

For Elected Officials—Begin dialogue on the issues effective youth and encourage appropriate response from the legal and criminal justice systems.

Partner your organization with ours.

Get involved in the Wraparound Services Advisory Team.

Help distribute organizational information and resources.

Invite us to speak at your event.

Donate services, supplies, or make a tax deductible financial contribution.

CONTACT US



**Search Light
State Facility License # 336426008**

**Facility Phone - (951) 242-5900
Facility Fax - (951) 242-5988**

**Silence Aloud Corporate Phone for
Placement Representatives call
(951) 214-3675**

**www.silencealoud.org
Email: info@silencealoud.org**

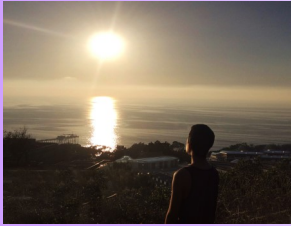
SEARCH LIGHT GROUP HOME



***A Residential Treatment
Community***

***A Program of
Silence Aloud, Inc.
(951)242-5900 or
(951)214-3675 (for placement)***

MISSION AND GOALS



Search Light is a program of Silence Aloud,

Inc. , a 501c3 charitable organization dedicated to providing housing, foster care, advocacy and support in all forms necessary for children, adolescents and young adults who are victims of abuse, whether physical, emotional, sexual or substance related.

Search Light, a state licensed childrens residential treatment facility (level 10), provides 24 hour specialized therapeutic services in a compassionate and structured home environment, to teen males between the ages of 13 and 17 . The program specializes in the provision of substance abuse prevention services. Search Light regards substance use as the outward manifestation of a much broader set of problems, thus the organization is on quest to assist youth in seeking out the GREAT LIGHT within.

SERVICES

While living in the community, clients receive an intensive continuum of care utilizing a wraparound model of service provision headed by our Multidisciplinary Treatment Team (MTT). The MTT consists of a licensed social worker, psychologist, substance abuse counselor, psychiatrist and the program Administrator. Our clients benefit from the following services and activities:

- Individual, family & group therapy
- Mental health treatment
- Case management
- 24 hour crisis intervention
- Substance abuse treatment & prevention
- Independent living skills training
- Financial literacy
- Mentoring program
- Giving back through community service
- Educational Advocacy & Support
- Tutoring
- Arts enrichment outings/activities
- Structured group activities

WHO WE SERVE

The program serves male youth between the ages of 13 and 17 who may have histories of homelessness, physical, emotional, and/or sexual abuse, neglect, substance abuse, criminal justice system involvement, behavioral problems, low educational attainment, and fractured relationships with family and community. They may be exhibiting symptomatic behaviors including, isolation, self destructive, impulsivity, poor social adjustment, anger, and rebelling against authority figures.

The Search Light community is designed to treat the following diagnoses:

- Depression
- Bipolar Disorder
- Oppositional Defiant Disorder
- Reactive Attachment Disorder
- ADD/ADHD
- Thought Disorders
- Substance Abuse and Depend -
ency
- Anxiety
- Post Traumatic Stress Disorder
- Severely Emotional Disturbed
- Learning Disabled