

# WIMBERLEY, TX



**“A Little Bit Of Heaven.”**



Independence Title

Explore [www.IndependenceTitle.com](http://www.IndependenceTitle.com)





**Wimberley is the geographic center and the aesthetic heart** of the Wimberley Valley and is located at the confluence of Cypress Creek and the Blanco River. It was officially incorporated in May 2000. Before that it was a officially a census designated place. Wimberley is 28 miles southwest of Austin and 46 miles northeast of San Antonio.

Wimberley's fame is for its many rivers and streams. Cypress Creek flows from Jacob's Well into Wimberley and then south to the Blanco River, which flows through the Wimberley Valley from west to east. Wimberley has been a retreat for

artists, musicians and writers for many years. Art galleries, quaint shops and performing arts venues showcase the local talent year round. Wimberley hosts the most popular Market Day in the area. From March through December, on the first Saturday of the month, Market Day beckons treasure hunters from all over the country. Visitors can choose from a wide variety of bed and breakfast inns, motels, resorts or RV parks. The climate and setting make Wimberley a desirable place to live and a favorite vacation getaway. Come see why Wimberley is known as "a little bit of heaven".







# Helpful Contacts

## Local Services

**Wimberley City Hall** [www.cityofwimberley.com](http://www.cityofwimberley.com)  
221 Stillwater | 512/847-0025

**Hays County Sheriff's Office** [www.co.hays.tx.us](http://www.co.hays.tx.us)  
1307 Uhland Road, San Marcos | 512/393-7800

**City of Woodcreek** [www.cityofwoodcreek.com](http://www.cityofwoodcreek.com)  
41 Champion Circle | 512/847-7641

**U.S. Post Office** [www.usps.com](http://www.usps.com)  
11 Joe Wimberley Blvd. | 512/847-2623

**County Commissioner, Pct. 3** [willconley@co.hays.tx.us](mailto:willconley@co.hays.tx.us)  
Will Conley | 114306 Ranch Road 12 #11

**Justice of the Peace, Pct. 3** [www.co.hays.tx.us](http://www.co.hays.tx.us)  
Andrew W.Cable | 114306 Ranch Road 12 #11 | 512/847-2000

## Public Safety

**Hays County Health Dept**  
512/393-2150

**Hays County Sheriff Dept**  
512/393-7896

**Volunteer Fire Dept**  
512/847-2345

**Animal Referral Services**  
512/847-2878

## Utilities

**Aquasource**  
370 Valley Spring Road | 512/847-2972

**Pedernales Electric** [www.pec.coop](http://www.pec.coop)  
888/554-4732

**Wimberley Hydro Gas**  
319 FM 2325 | 512/847-9825

**Wimberley Water Supply**  
110 La Pais Drive | 512/847-2323

**AT&T** [www.att.com](http://www.att.com)  
651 Barnes Drive, B2, #206, San Marcos | 512/392-5229

**Time Warner Cable** [www.timewarnercable.com](http://www.timewarnercable.com)  
301 N. Guadalupe Street, San Marcos | 512/518-6166

**Verizon Wireless** [www.verizon.com](http://www.verizon.com)  
911 Hwy. 80, San Marcos | 512/353-6363



## Area Attractions

Blue Hole Regional Park [www.blueholeregionalpark.com](http://www.blueholeregionalpark.com)  
100 Blue Hole Lane | 512/660-9111

The Corral Theatre [www.corraltheatre.com](http://www.corraltheatre.com)  
100 Flite Acres Road | 512/847-5994

EmilyAnn Theatre & Gardens [www.emilyann.org](http://www.emilyann.org)  
1101 FM 2325 | 512/847-6969

Jacob's Well  
1699 Mt. Sharp Road | 512-847-2140

7A Resort & Pioneer Town [www.7AResort.com](http://www.7AResort.com)  
333 Wayside Drive | 512/847-2517

Quicksand at Woodcreek Golf [www.golfquicksand.com](http://www.golfquicksand.com)  
1 Pro Lane, Kyle | 512/847-9700

Wimberley Glassworks [www.wgw.com](http://www.wgw.com)  
6469 Ranch Road 12 | 512/393-3316

Wimberley Lion's Market Days  
[www.shopmarketdays.com](http://www.shopmarketdays.com)  
601 FM 2325 | 1st Saturday, March-December

Wimberley Players [www.wimberleyplayers.org](http://www.wimberleyplayers.org)  
450 Old Kyle Road | 512/847-1592

Wimberley Valley Art League & Gallery  
[www.visitwimberley.com](http://www.visitwimberley.com)  
14068 Ranch Road 12 | 512/826-4286

Wimberley Zipline Adventures [www.wimberleyzipline.com](http://www.wimberleyzipline.com)  
Winn Valley Dr | 512/847-9990

## Banking

Blanco National Bank [www.blancobank.com](http://www.blancobank.com)  
15451 Ranch Road 12 | 512/847-1300

Broadway Bank [www.broadwaybank.com](http://www.broadwaybank.com)  
14710 Ranch Road 12 | 512-847-5504

Ozona National Bank [www.ozonabank.com](http://www.ozonabank.com)  
101 River Ranch Road | 512/847-8200

Wells Fargo Bank [www.wellsfargo.com](http://www.wellsfargo.com)  
14650 Ranch Road 12 | 512/847-2442

## Auto Service

BC's Paint Works & Auto Sales  
920 FM 2325 | 512/847-7966

Bob Lawson Lube & Auto  
171 Augusta | 512/847-8742

Express Care Wimberley  
14412 Ranch Road 12 | 512/847-8755

Hill Country Tire & Automotive  
14412 Ranch Road 12 | 512/847-2260

Wimberley Automotive & Tire Care  
151 Las Flores Bldg. 4-A | 512/563-2294

Wimberley Collision – Body Shop, Towing & Truck Accessories  
100 Texan Blvd | 512/847-2415

Wimberley Paint & Body  
100 Texas Blvd | 512/847-2415

## Grocery & Pharmacy

Brookshire Bros. Grocery & Pharmacy [www.brookshirebrothers.com](http://www.brookshirebrothers.com)  
14100 Ranch Road 12 | 512/847-2296

Hill Country Natural Foods [www.hillcountrynaturalfoods.com](http://www.hillcountrynaturalfoods.com)  
801 Ranch Road 2325 | 512/847-3291

Wimberley Pharmacy [www.hillcountryrx.com](http://www.hillcountryrx.com)  
120 Joe Wimberley Blvd | 512/847-2288

## Veterinarians

Cypress Creek Animal Hospital [www.cypresscreekanimalhospital.com](http://www.cypresscreekanimalhospital.com)  
15400 Ranch Road 12 | 512/847-5514

Wimberley Veterinary Clinic [www.wimberleyvetclinic.com](http://www.wimberleyvetclinic.com)  
12605 Ranch Road 12 | 512/847-5630

Betsy W. Harrison, DVM [www.wimberleyvetclinic.com](http://www.wimberleyvetclinic.com)  
100 S. Park Rd | 830/935-2596





## Faith

Wimberley Chapel in the Hills Fellowship

[www.wimberleychapelinthehills.com](http://www.wimberleychapelinthehills.com)

14601 Ranch Road 12 | 512/847-9762

Cypress Creek Church [www.cypresscreekchurch.com](http://www.cypresscreekchurch.com)

221 Stillwater | 512/847-1222

First Baptist Church [www.fbcwimberley.com](http://www.fbcwimberley.com)

15951 Winters Mill Parkway | 512/847-9035

Lutheran Church of the Resurrection [www.welcometonevnewlife.com](http://www.welcometonevnewlife.com)

101 Spoke Hill Drive | 512/847-3386

St. Mary's Catholic Church [www.saintmaryswimberley.com](http://www.saintmaryswimberley.com)

14711 Ranch Road 12 | 512/847-9181

St. Stephen's Episcopal Church and School [www.ststeve.org](http://www.ststeve.org)

6000 FM 3237 | 512/847-9956

Unity Church of Wimberley [www.unityofwimberley.com](http://www.unityofwimberley.com)

455 White Wings Road | 512/847-6587

Wimberley Church of Christ [www.wimberleychurchofchrist.org](http://www.wimberleychurchofchrist.org)

15500 Ranch Road 12 N | 512/847-9357

Wimberley Presbyterian Church [www.wimpres.org](http://www.wimpres.org)

956 FM 2325 | 512/847-5292

Wimberley United Methodist Church [www.wimberleyumc.org](http://www.wimberleyumc.org)

1200 County Road 1492 | 512/847-3109

Wimberley Christian Church [www.wimberleychristianchurch.com](http://www.wimberleychristianchurch.com)

13706 Ranch Road 12 | 512/847-3853



## Healthcare

Central Texas Medical Center [www.ctmc.org](http://www.ctmc.org)

1301 Wonder World Drive, San Marcos | 512/353-8979

Live Oak Health Partners [www.liveoakhealthpartners.com](http://www.liveoakhealthpartners.com)

950 FM 2325 | 512/847-3434

Seton Medical Center Hays [www.seton.net](http://www.seton.net)

6001 Kyle Parkway, Kyle | 512/504-5000

Wimberley Diagnostic Clinic

950 FM 2325 #B | 512/847-3434

Wimberley Emergency Medical [www.wimberleyems.com](http://www.wimberleyems.com)

220 Twilight Trail | 512/847-2526

Wimberley Medical Clinic [www.wimberleymedicalclinic.com](http://www.wimberleymedicalclinic.com)

12941 Ranch Road 12 | 512/847-6789

Wimberley Pediatrics

180 Joe Wimberley Blvd. #102 | 512/847-7700

Wimberley Eye Associates [www.centraltexaseyecenter.com](http://www.centraltexaseyecenter.com)

14500 Ranch Road 12 | 512/847-8770

# Dental

## Family Dental Center

501 Old Kyle Rd. #101 | 512/847-3556

## Robert D. White, DDS [www.broadwaybank.com](http://www.broadwaybank.com)

140 Joe Wimberley Blvd | 512/847-9521

## Wimberley Dental Center [www.ozonabank.com](http://www.ozonabank.com)

181 FM 3237 | 512/847-8934

# Insurance

## Beard Insurance & Assoc. LLC [www.beard-insurance.com](http://www.beard-insurance.com)

15577 Ranch Road 12 | 512/847-9394

## Benner Insurance Agency

317 FM 2325 | 512/847-3778

## Byron Eckols - State Farm Insurance [www.byroneckols.com](http://www.byroneckols.com)

173 FM 3237 | 512/847-9400

## D&D Insurance [www.dd-ins.net](http://www.dd-ins.net)

107 E. Summit Drive | 512/847-5549

## Carpenter Insurance [www.carpenter-insurance.com](http://www.carpenter-insurance.com)

P.O. Box 878 | 512/847-2433

## Mary Starr- Hill Country Insurance Agency

P.O. Box 2550 | 512/842-2700

# Annual Events

## February

**Mardi Gras and Gumbo Cookoff** Pioneer Town. Music, food, drinks, parade, King & Queen, costume contest, gumbo cook-off, lots of fun. 21 and older. This fundraiser is sponsored by MyNK, 501(c)(3) whose sole purpose is to provide immediate short-term financial assistance for disaster victims in the Wimberley area. [www.mynkwimberley.org](http://www.mynkwimberley.org)

## April

**Butterfly Festival** A day of fun for the whole family! Admission is free; donations are appreciated. Live Butterfly Release Every 30 Minutes, Raffle, Butterfly Store, Earth Day Celebration, Butterfly Art, Entertainment, Concessions, & games. [www.emilyann.org](http://www.emilyann.org)

**Wimberley Art Festival** The Wimberley Valley Art League hosts its annual Arts Fest to celebrate the visual arts of local and regional artists. [www.wimberleyartsfest.com/](http://www.wimberleyartsfest.com/)

**Wimberley Pie Social** Great family fun with entertainment, kids' activities including a bounce house, face painting, petting zoo, hot dogs, drinks, snow cones and yes, pie by the slice! [www.wimwic.org](http://www.wimwic.org)

## May

**Brewgrass Festival** Wimberley, 9595 RR 12. 11a-9p. Kid zone, talent competition, face painting, family fun, hourly raffle prizes, live music, local artisans. Free, annual event. **Contact: Holly Collie, 512-667-4616.**



## July

**Annual Community 4th of July Parade & Jubilee** Under the shade trees at Ozona Bank. Live music, family fun, entertainment and great food! Don't miss the family fun, food and entertainment. **Information: 512/847-2201**

## November

**Annual Wimberley Community Civic Club Home Tour** Hosted by Wimberley Community Civic Club. Showcasing five beautiful homes in the Wimberley Valley offering a range of styles, sizes and architecture. All homes are decorated for Thanksgiving or Christmas. A gift shop at the Winters Wimberley House will offer unique Christmas gifts. Guests may also enjoy a complimentary wine tasting hosted by Taste Buds. [wimberleyccc.com](http://wimberleyccc.com)

## December

**Annual Lighted Christmas Parade** The parade will meander through town on RR12 toward the Wimberley Square and turn left onto Old Kyle Road. Roads will close at 9am so get your place early. Help make this a special Christmas for everyone by participating. All individuals, merchants and organizations are encouraged to participate. [www.wimberley.org](http://www.wimberley.org)

**Creekside Christmas** An old-fashioned Christmas in Wimberley is designed to delight and inspire your holiday season. After strolling through our quaint shops and art galleries, have dinner at one of our restaurants and then end your evening at EmilyAnn Theatre and Gardens' Trail of Lights. A magical place where the beauty of nature and Christmas meet. Meet your friends at the Yule Log and enjoy roasting marshmallows and singing carols. [www.emilyann.org](http://www.emilyann.org)

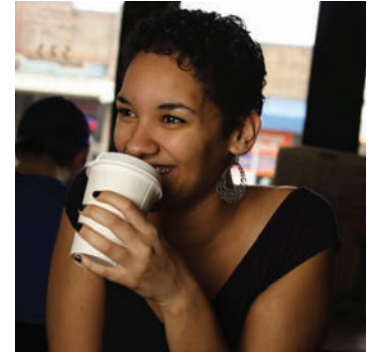
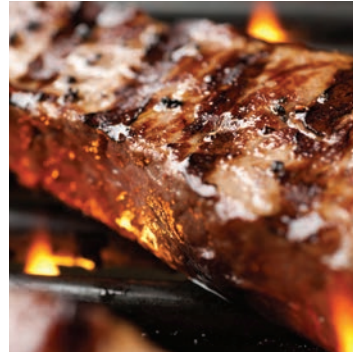
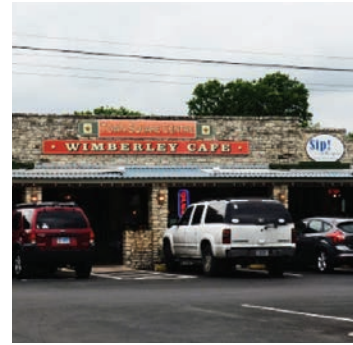
# Monthly Events

## Market Days: 1st Saturday of the month March-December

Wimberley hosts the oldest outdoor market in the Texas Hill Country and the second-largest in the state. We feature over 475 booths of everything you can't live without. Come stroll our tree-shaded paths, listen to live music and shop to your heart's content. [www.shopmarketdays.com/](http://www.shopmarketdays.com/)

**Second Saturday Gallery Trail** Wimberley, at the Square and around town. 4-7p. The 2nd Sat of every month, Wimberley's fine art galleries keep their doors open late for the monthly Gallery Trail. Wimberley's fifteen participating galleries feature a wide spectrum of fine art from local and national artists. Come to Wimberley and enjoy wine, nibbles, and ... art! Free. **512-847-9438.**





## Restaurants & Coffee Shops

**19th Hole & Above Par Grill**  
1 Pro Lane | 512/847-7248

**Blair House Inn** [www.blairhouseinn.com](http://www.blairhouseinn.com)  
100 Spoke Hill Road | 512/847-1111

**Brewster's Pizza** [www.brewsterspizza.com](http://www.brewsterspizza.com)  
9595 Ranch Road 12 | 512/847-3299

**Dairy Queen** [www.dairyqueen.com](http://www.dairyqueen.com)  
14622 Ranch Road 12 | 512/847-3670

**Inoz** [www.inozinc.com](http://www.inozinc.com)  
14004 Ranch Road 12 | 512/847-6060

**Jobell Café & Bistro** [www.jobellcafe.com](http://www.jobellcafe.com)  
16920 R.R. 12 | 512-847-5700

**Kate's Place** [www.katesplacewimberley.com](http://www.katesplacewimberley.com)  
600 FM 2325 | 512/722-3744

**The Leaning Pear** [www.leaningpear.com](http://www.leaningpear.com)  
111 River Road | 512/847-7327

**Linda's Fine Foods** [www.lindaallencatering.com](http://www.lindaallencatering.com)  
500 FM 2325 | 512/847-5464

**Marco's Italian Restaurant & Pizzeria**  
303 Wimberley Square | 512/847-0742

**Maui Wowi** [www.wimberleycoffee.com](http://www.wimberleycoffee.com)  
14200 Ranch Road 12 | 512/847-6215

**Milagro's** [www.milagroshillcountry.com](http://www.milagroshillcountry.com)  
9595 Ranch Road 12 | 512/842-2800

**Mima's Kitchen**  
701 FM 2325 | 512/847-1305

**Miss Mae's BBQ** [www.missmaesbbq.com](http://www.missmaesbbq.com)  
419 FM 2325 | 512/847-9808

**Pizza Hut** [www.pizzahut.com](http://www.pizzahut.com)  
101 FM 2325 | 512/847-2844

**The Salt Lick** [www.saltlickbbq.com](http://www.saltlickbbq.com)  
18300 FM 1826, Driftwood | 512/858-4959

**San Angels Mexican Restaurant** [www.sanangelwtx.com](http://www.sanangelwtx.com)  
500 River Road | 512/722-3257

**Subway** [www.subway.com](http://www.subway.com)  
809 FM 2325 | 512/847-7824

**Sugar Shack Bakery** [www.howsweetitishop.squarespace.com/](http://www.howsweetitishop.squarespace.com/)  
111 River Road #100 | 512/847-0477

**Trattoria Lisina** [www.trattorialisina.com](http://www.trattorialisina.com)  
13308 FM 150 West, Driftwood | 512/894-3111

**Wimberley Cafe** [www.wimberleycafe.com](http://www.wimberleycafe.com)  
101A Wimberley Square | 512/847-3333

**Wimberley Pie Company** [www.wimberleypie.com](http://www.wimberleypie.com)  
13619 Ranch Road 12 | 512/847-9462



# Schools

**Wimberley ISD Central Office** [www.wimberley.txed.net](http://www.wimberley.txed.net)

Superintendent: Dwain York  
14401 Ranch Road 12 | 512/847-2414

**Jacob's Well** [jw.wimberleyisd.net](http://jw.wimberleyisd.net)

3470 Ranch Road 2325 | 512/847-5558  
Grades 2-5  
TEA Accountability Rating: Met Standard  
Principal: Andrea Gonzales

**Danforth Jr. High School** [jh.wimberleyisd.net](http://jh.wimberleyisd.net)

200 Texan Blvd | 512/847-2181  
TEA Accountability Rating: Met Standard  
Principal: Jason P Valentine

**Scudder Primary School** [sc.wimberleyisd.net](http://sc.wimberleyisd.net)

400 Green Acres Drive | 512/847-3407  
Grades: Pk-2, Rk-1  
TEA Accountability Rating: Met Standard  
Principal: Christi Moeller

**Wimberley High School** [hs.wimberleyisd.net](http://hs.wimberleyisd.net)

100 Carney Lane | 512/847-5729  
Grades: 9-12  
TEA Accountability Rating: Met Standard  
Reading/ELA Achievement  
Mathematics Achievement  
Top 25% Progress Achievement  
Principal: Greg Bonewald

Distinction Earned  
Distinction Earned  
Distinction Earned

**Little River Preschool** [www.littleriverpreschool.com](http://www.littleriverpreschool.com)  
501 Old Kyle Rd | 512/847-5300

**Parkside Community School Hill Child Care Center**  
45 La Buena Vista Drive | 512/847-6055

## Wimberley ISD T.A.P.R. Report

Total Students	2,064
Total Staff (Teachers/Admin)	287.9
Students per Teacher	14.9
Attendance Rate	96.2%
Dropout Rate (Grades 9-12)	0.3%
% Tested - SAT/ACT	76.5%
Average SAT Score	1591
Average ACT Score	23.4
STAAR Test Participation (All Grades)	99.0%
STAAR All Subjects (All Grades)	89.0%
4-Year Graduation Rate without Exclusions	97.4%



# DECLARE YOUR INDEPENDENCE!



Independence Title  
Explore [www.IndependenceTitle.com](http://www.IndependenceTitle.com)