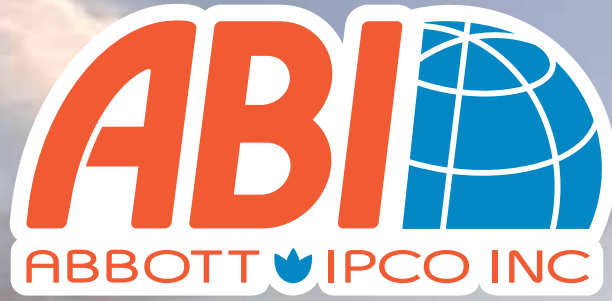


2023-2024



# Caladiums & More

Featuring Proven Winners® Heart to Heart® Clowning Around





DALLAS ARBORETUM LANDSCAPE

4

Proven Winners  
Be My® Calla

9

Heart to  
Heart®  
Caladiums

21

Classic  
Caladiums

27

Inspiration  
& Ideas

28

Culture  
Guide

32

Cannas

34

Elephant  
Ears

36

Power  
Planter

For Growers

Cost effective production

Short crop time

New varieties regularly  
introduced

For Landscapers

Full shade to full sun varieties

Easy to install

Low maintenance

Color all summer

Range of caladium varieties  
for border, intermediate, or  
background plantings

For Retailers

Colors and patterns to  
complement every palette

Minimal investment for  
summer-long color

Perfect for container  
gardening

Low maintenance success  
for sun or shade



# Why count on the largest caladium grower in the world?

## Rooted

Classic Caladiums is rooted in the science of growing caladiums. We are constantly developing new genetic lines, resulting in varieties that are hardier, more sun tolerant, and faster growing. We've already introduced more than 90 new caladium varieties over the past 25 years and have hundreds more in development.

## Resourceful

We are actively building the caladium industry through constant innovation. Our team has regular brainstorming meetings to come up with new ideas: new varieties, new partnerships, new growing techniques. Our willingness to experiment and try new things keeps us on the cutting edge of our industry.

## Reliable

Every crop is at the mercy of nature, and caladiums are no different. From better irrigation to protect against drought to unique-to-the-industry raised beds that guard against flooding, we've taken measures to ensure we can reliably fill orders no matter how turbulent a growing season might be.

Since 1974, Abbott-IPCO has served the horticulture industry as an international source of caladium bulbs, imported Holland flowerbulbs, perennials and other unique products for the greenhouse industry, garden center, landscaper and gardener. Abbott-IPCO's farm Classic Caladiums, LLC. is the world's leader in production and distribution of ever-changing, new, and improved varieties of caladiums including introductions. Abbott-IPCO Europe facilitates all import and export activities, with an emphasis on specialty bulb crops and perennials.



**PW**  
PROVEN  
WINNERS®  
The #1 Plant Brand.®

Welcome the  
**Proven Winners Be My® Calla**  
collection. Share 7 beautiful colors  
of calla lilies with the ones you love.



**NEW IN 2023-2024**  
Proven Winners  
**Be My® Destiny Calla**  
This vibrant purple calla  
will compliment all of the  
Be My® Calla Collection



BE MY® SUNSHINE



BE MY® FIRST LOVE



BE MY® HEART



BE MY® MAIN SQUEEZE



BE MY® PRINCESS



BE MY® PRINCE



BE MY® DESTINY



Although Calla Lilies may look delicate, they are relatively durable and easy to grow. The spathe (what we call the flower) can persist for up to 12 weeks and mature into richer colors as it ages. If grown in pots, keeping the plant pot bound will encourage more blooms. Calla Lilies make long lasting cut flowers.



## Planting Information

All bulbs will be size 18 cm and be grown in the 6.5" Proven Winners Containers which will create pot crop consistency. Be My® Calla bulbs are pretreated for disease. Pretreatment enhances flowering, aids in disease prevention, slightly increases height, and softens tissue.

Media should be well-drained peat and substrate mix with a pH of 6-6.5. Peat should be no more than 60% of the mix. Heavier soil mixtures increase the risk of diseases. We recommend incorporating Root Shield (1lb per cubic yard) or Soil Guard (12 oz per cubic yard) to promote healthy root growth.

Planting depth is 1-2" from the top of the soil. When growing callas, do not place the container directly onto the ground. An air gap between the container and the ground will increase airflow and help keep diseases at bay. Be sure to space containers quickly after sprout for proper airflow and better growth habit.

## Initial Fungicide Drenching

Approximately 2 to 3 days after planting, (when roots begin to appear) it is highly recommended to apply this four-part preventative drench consisting of:

Heritage (4 oz per 100 GAL) for Rhizoctonia

Agri-Mycin® 17 (0.5-1.0lb per 100 GAL) for Erwinia

Subdue Maxx (0.5-1oz/100 GAL) for Water Molds

Calcium Nitrate (200-250 ppm) for stem strength, better foliage growth and increase bloom count

## Fertilization

Feed plants with a Nitrate based fertilizer (15-5-15 Ca/Mg or 17-5-17 Ca/Mg) at 150-200 ppm. Keep Media-EC between 1.6-1.8 (SMA).

## Keys to Success

Water management

Weekly inspections



## Stage #1

Sprouting takes place within 10 to 14 days with average temperatures of 68°F. Some growers may see a longer germination period depending on your temperatures.

From the plant date to spiked 1-3" sprouts is typically 14-25 days. The preferred temperature is 75°F during the day, 65°F at night or at a constant 68°F.

Keep moist but water sparingly until leaves unfurl. A Plant Growth Regulator (PGR) should be applied as a toner or toughener to a visible spike (a sprout no taller than 1"). Spray 15-25 ppm Fascinat<sup>®</sup> 10-14 days after planting. Please contact our Sales Team for specific applications.

Days 0 to 14 are Early Stage #1 and days 20 to 25 are Mid to Late Stage #1.



## Stage #2

From day 26 to day 50, 5" to 8" sprouts should be visible throughout the container. Achieve a better growing habit with proper spacing per container size, good airflow, increased lighting, and ideal temperatures of 70°F days with 60°F nights. Keep callas moist while avoiding wet or dry extremes.

Apply the four-part preventative drench again (see page 6) on day 28 as a regular watering. Daily inspection of roots is critical. Late Stage #2 are days 45-50 with great root growth and close to production.

**PW**  
PROVEN  
WINNERS®  
The #1 Plant Brand.



### Stage #3

During days 50 to 75, the ideal temperature is 65°F during the daytime and 50°F nights. Keep callas moist with water. As soon as first spathe opens, apply 15-25 ppm Fascination Foliar Spray. (This application will add shelf life in store.)

Continue daily & weekly inspection of roots depending on the daytime temperatures. Proper spacing per container size provides good airflow and increases lighting for better habit. Day 61 to 63: Multiple spathes rising through foliage. Day 75 to 80: End of Stage 3.

### Post Crop, Shipping, and Performance

Working through each step critically will give a uniform crop and allow your greenhouse to ship every container on shipping day. The Be My® Calla Collection adds depth to your spring mix and strengthens your perennial offerings.

### General Overview with Conclusion

Temperatures affect callas. Cooler temperatures will increase growing time. Warmer temperatures will shorten growing time but will result in floppy, stretched spathes. When growing in cooler temperatures, watch watering closely!

Water management is the key factor in disease control. Keep plants moist, by water sparingly until leaves unfurl. Any preventative drench should be applied to coincide with regular watering needs. Perform daily inspections, checking for clear or browning roots. Remove any diseased pots immediately. Sanitation is critical!

The key to a successful crop is disease prevention through:

- Air Flow
- Proper watering
- Preventative drenching
- Daily inspection

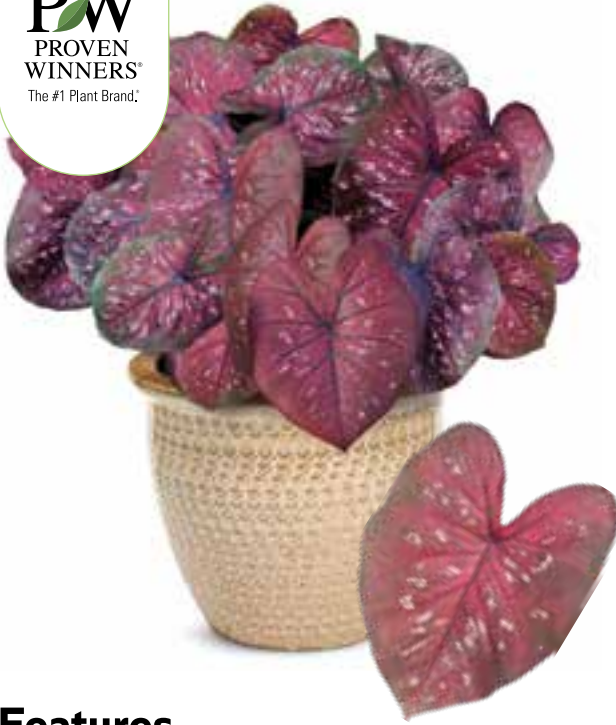


Classic Caladiums, LLC. provides the genetics behind Proven Winners Heart to Heart® Caladiums. Dr. Robert Hartman, with degrees in Plant Pathology and Entomology with a minor in Ornamental Horticulture, is responsible for developing new varieties of caladiums while working to rejuvenate older caladiums using tissue culture techniques on our 850 acre farm.

Classic Caladiums certifies its starting stock to be: **true to name, free of specific diseases and rejuvenated through micropropagation and virus indexing.**



**PW**  
PROVEN  
WINNERS®  
The #1 Plant Brand.



HEART TO HEART

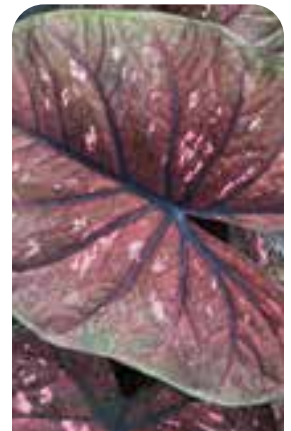
*Rain or Shine*

## Features

One of the most unique and vigorous caladiums we've ever trialed. Large, bronze pink-red leaves with soft pink speckles and black veining stand out easily on grower and retail benches. Good sun tolerance expands this variety's uses.

Unique coloring and fantastic vigor set Heart to Heart® 'Rain or Shine' caladium apart. Large, heart-shaped leaves

emerge in dramatic shades of deep bronze pink-red with soft pink speckles and black veining. In certain lights, you might detect a hint of purple, too. They retain their color well in full sun but also thrive in part sun. This variety's taller, upright form makes a statement.



RAIN OR SHINE





**BOTTLE ROCKET**



**BURNING HEART**



**CLOWNING AROUND**



**DAWN TO DUSK**



**FAST FLASH**



**FLATTER ME**



**HOT FLASH**



**LEMON BLUSH**



**MESMERIZED**



**RADIANCE**



**RASPBERRY MOON**



**ROSE GLOW**



**SNOW DRIFT**



**SNOW FLURRY**



**SPLASH OF WINE**



**PW**  
PROVEN  
WINNERS®  
The #1 Plant Brand.™



**BLUSHING BRIDE**



**BOLD 'N BEAUTIFUL**



**CARIBBEAN CORAL**



**CHINOOK**



**HEART AND SOUL**



**HEART'S DELIGHT**



**HOT 2 TROT**



**SCARLET FLAME**



**TICKLE ME PINK**



**VA VA VIOLET**



**More choices and  
more new genetics**



**WHITE STAR**



**WHITE WONDER**



**XPLOSION**





## Scarlet Flame

Meet Scarlet Flame, the Caladium of the Year for 2023. It has red strap shaped leaves that are liberally marked with pink and white speckles, finished with a deep green margin.

Scarlet Flame can be grown in the sun or shade. It will grow well in the landscape, a container, and is adaptable as a houseplant.



## Do you BELIEVE in LOVE at first sight?

'Lemon Blush' is a fancy-leaved introduction with rose red center and wide chartreuse margin - a new look in caladiums. It is a part shade to shade plant. Caladiums are also generally considered to be good houseplants where they prefer bright light or a sunny window.

- Award Winner
- Adaptable As Houseplant
- Deadheading Not Necessary
- Foliage Interest
- Heat Tolerant



**PW**  
PROVEN  
WINNERS®  
The #1 Plant Brand.™



**CALADIUM  
RECIPE  
OF THE YEAR  
2023**

# Heartfelt Wonder

Combine Proven Winners 'White Wonder' and 'Scarlet Flame' to achieve this recipe



WHITE WONDER



SCARLET FLAME

**CALADIUM  
RECIPE  
OF THE YEAR  
2024**



# Instinct

Combine Proven Winners 'White Wonder' and 'Chinook' to achieve this recipe



WHITE WONDER



CHINOOK



1

2

3



Visit Proven Winners Container Garden Recipe Search online to learn how to create:



STARBOARD



THE RED SEA



AUBURN



CHEERY SMILE



PURE POETRY



DEEP DARK SECRET



SEA WINDS



LEMON RASPBERRY  
MERINGUE



ROMANCE

**PW**  
PROVEN  
WINNERS®  
The #1 Plant Brand.™



**WHITE STAR**



**BOTTLE ROCKET**



**CHINOOK**



**LEMON BLUSH**



**BURNING HEART**



Variety	Type	Sun/Shade	Patent #	Primary Color	Crop Time	Height	QT	6.5"	8.5"	10"	10 HB	12"+ Container
Short 12-14"/Intermediate 14-16"/Tall 16"+												
Bottle Rocket	Fancy	SUN/SHADE	USPP #30,651	RED	6-8 WKS	TALL		X	X	X		X
Burning Heart	Fancy	SUN/SHADE	USPP #27,071	BRONZE	6-8 WKS	TALL		X	X	X		X
Clowing Around	Fancy	SUN/SHADE	USPP #32,252	PINK/ORG	6-8 WKS	INT		X	X	X		X
Dawn to Dusk	Fancy	SUN/SHADE	USPP #23,991	WHITE/ORG	6-8 WKS	TALL		X	X	X		X
Fast Flash	Fancy	SUN/SHADE	USPP #27,964	RED	6-8 WKS	INT	X	X	X	X		X
Flatter Me	Fancy	SUN/SHADE	USPP #27,946	RED/CHR	7-9 WKS	TALL	X	X	X	X		X
Hot Flash	Fancy	SHADE	USPP #27,944	RED	6-8 WKS	SHORT	X	X	X	X		X
Lemon Blush	Fancy	SHADE	USPP #25,450	RED/CHR	5-8 WKS	INT	X	X	X	X	X	X
Mesmerized	Fancy	SUN/SHADE	USPP #29,545	RED	5-8 WKS	INT	X	X	X	X		X
Radiance	Fancy	SUN/SHADE	USPP #27,095	PINK	5-8 WKS	INT	X	X	X	X		X
Rain or Shine	Fancy	SUN/SHADE	USPP #33,614	BURG/BLK	7-9 WKS	TALL		X	X	X		X
Raspberry Moon	Fancy	SUN/SHADE	USPP #20,069	RED/CHR	5-8 WKS	TALL	X	X	X	X		X
Rose Glow	Fancy	SUN/SHADE	USPP #20,070	PINK	5-8 WKS	INT	X	X	X	X		X
Snow Drift	Fancy	SHADE	USPP #27,072	WHITE	5-8 WKS	INT	X	X	X	X	X	X
Snow Flurry	Fancy	SUN/SHADE	USPP #31,569	GRN/WHITE	6-8 WKS	TALL		X	X	X		X
Splash of Wine	Fancy	SHADE	USPP #31,599	WHITE/PINK	5-8 WKS	INT	X	X	X	X		X
Blushing Bride	Strap	SHADE	USPP #22,213	PINK	6-8 WKS	SHORT	X	X	X	X	X	X
Bold N' Beautiful	Strap	SUN/SHADE	USPP #30,696	WHITE/ORG	6-8 WKS	INT		X	X	X		X
Carribbean Coral	Strap	SHADE	USPP #29,546	SAL/RED	6-8 WKS	SHORT	X	X	X	X	X	X
Chinook	Strap	SHADE	USPP #27,094	PINK/SAL	6-8 WKS	INT	X	X	X	X	X	X
Heart and Soul	Strap	SUN/SHADE	USPP #31,567	PINK	5-8 WKS	INT	X	X	X	X		X
Heart's Delight	Strap	SUN/SHADE	USPP #23,992	RED	5-8 WKS	TALL	X	X	X	X		X
Hot 2 Trot	Strap	SUN/SHADE	USPP #33,615	RED	7-9 WKS	SHORT	X	X	X	X	X	X
Scarlet Flame	Strap	SUN/SHADE	USPP #25,419	RED	5-8 WKS	SHORT	X	X	X	X	X	X
Tickle Me Pink	Strap	SHADE	USPP #31,061	PINK	5-8 WKS	INT	X	X	X	X	X	X
Va Va Violet	Strap	SHADE	USPP #28,000	VIOLET/PINK	6-8 WKS	SHORT	X	X	X	X	X	X
White Star	Strap	SUN/SHADE	USPP #21,148	WHITE	6-8 WKS	INT	X	X	X	X	X	X
White Wonder	Strap	SUN/SHADE	USPP #21,044	WHITE	5-8 WKS	INT	X	X	X	X	X	X
Xplosion	Strap	SHADE	USPP #31,570	Pink/Olive	6-8 WKS	SHORT	X	X	X	X	X	X



**PW**  
**PROVEN**  
**WINNERS**<sup>®</sup>  
 The #1 Plant Brand.

VA VA VIOLET

1.0 QT Container



OR



2 Number 2 Bulbs

1 Number 1 Bulb



2.5 QT Container



OR



OR



4 Number 2 Bulbs

2 Number 1 Bulbs

1 Jumbo Bulb

6.5" Container



OR



OR



4 Number 2 Bulbs

2 Number 1 Bulbs

1 Jumbo Bulb

8" Container



OR



4 Number 1 Bulbs

2 Jumbo Bulbs

10" Planter



OR



6 Number 1 Bulbs

3 Jumbo Bulbs

12" Planter



OR



7-8 Number 1 Bulbs

3-4 Jumbo Bulbs

14" Planter



OR



8 Number 1 Bulbs

4 Jumbo Bulbs



De-Eyeing is the removal of the dominant eye which promotes growth of multiple lateral eyes that generate more leaves, less stretching and fuller pots.

### De-eyeing provides:

- Table top crops
- Better pull ratios
- Fit more plants per rack
- Better sell through at retail level



DE-EYED

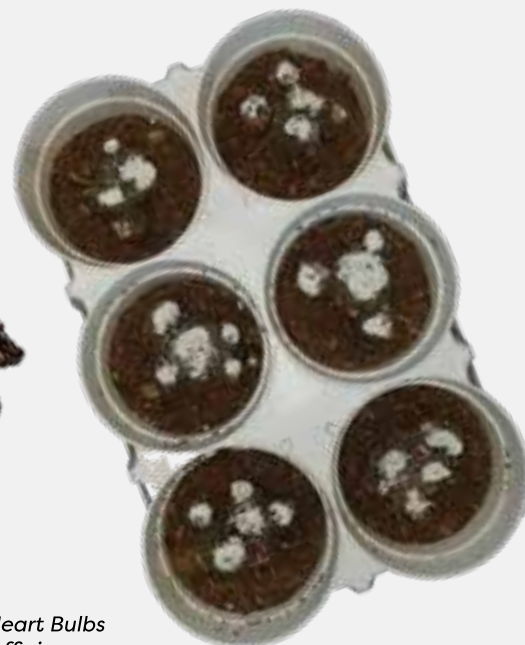


NON DE-EYED

Painting bulbs with a water based non-toxic paint allows for rapid and accurate tuber orientation during the potting process.

### Painting provides:

- Increased throughput on the planting line
- Less consolidation and pulling
- Less shrink at retail due to more proportioned pots



*\*All Proven Winners Heart to Heart Bulbs are De-eyed and Painted for efficiency*



**RESTLESS HEART**



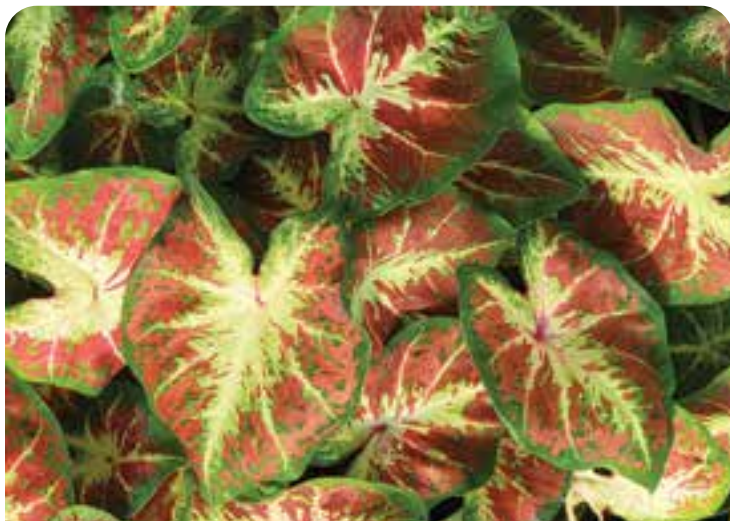
**FRECKLES**



**BALLET SLIPPERS**



**SOUTHERN CHARM**



**JUST SAUCY**



ALLURE



AARON



CANDIDUM SR.



CRYSTAL MOON



MONUMENT



MOONLIGHT



WATER'S EDGE



WHITE CAP



WHITE CHRISTMAS



CAROUSEL



CELEBRATION



SOUTHERN CHARM



WHITE QUEEN



SUMMER BREEZE





JUST SAUCY



FRECKLES



RED FLASH



BOMBSHELL



FRIEDA HEMPEL



POSTMAN JOYNER



RED ALERT



RESTLESS HEART



RIO SUMMER



**Rooted, Reliable  
and Resourceful**





CAROLYN WHORTON



APPLE BLOSSOM



PARTY PUNCH



SUNSET PINK



PINK BEAUTY



BALLET SLIPPERS



CLASSIC PINK



PINK SPLASH



BERRIES N'  
BURGUNDY







RED GLAMOUR



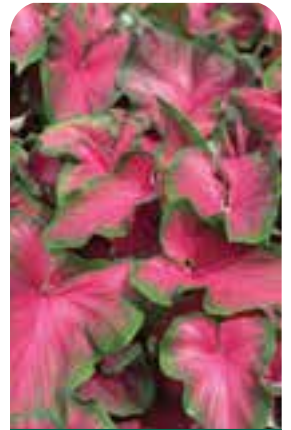
RED RUFFLES



RED HOT™



RED FRILL



ROSEMARY



FLARE



SANGRIA



PUPPY LOVE



SWEETHEART



PINK GEM



DESERT SUNSET



STARBURST



TIKI TORCH



MISS MUFFET



PEPPERMINT





DAY DREAMER



CANDYLAND



DEBUTANTE



MOUNT EVEREST



**All Classic Caladiums are grown in raised beds.**



HIGH SOCIETY



WHITE DELIGHT



WHITE DIAMOND



WHITE DYNASTY



WHITE PEARL



WHITE MARBLE



WHITE MAJESTY





RED GLAMOUR



CANDYLAND



WHITE DELIGHT



PEPPERMINT & SUMMER BREEZE



SANGRIA



## Caladiums like it bright!

Plant caladiums upon receipt. If tubers must be stored, keep temperature at 65°F or above, with humidity between 65-75%. For extended storage, remove tubers from boxes and place in well ventilated, open trays with good air circulation.

Plant caladiums with eyes up in well-drained soil media. Tubers should be covered with 1-1½ inches of soil. Water thoroughly after planting. We recommend a well-drained soil mixture containing organic matter. A pH adjusted peat moss, pine bark and perlite mix has proven successful for Caladium growers.

Tight spacing and low light will cause Caladiums to stretch. Spacing should be done from the beginning or right after sprouting.

De-Eying will result in a more branched, shorter uniform plant. (See page 21 with de-eying details.)

Uniform tuber sprouting occurs when soil temperature is elevated to 75-78°F and soil moisture is kept at 90%. Soil temperatures in the 60-70°F range will cause uneven and delayed response. Caladiums have moderate water requirements. Keep pots moist from planting time to sprouting. Soil media should be allowed to dry to moist between irrigation, but don't allow caladiums to wilt. Irrigate with water above 60°F to avoid the possibility of stunting or delay.



## Caladiums love heat!

For greenhouse production, we recommend planting after mid-January to allow for sufficient curing time after tuber harvesting and processing. Early (Jan-Feb) forced caladiums finish around 10-12 weeks. Later plantings (May) can finish as early as 4-6 weeks.

Bonzi drench, foliar spray, and tuber soaks can be used to control growth and improve plant habit. Rates range from 5-30 ppm and are determined by variety and environmental conditions.

B-nine foliar spray rates range from 1250-2500 ppm. B-nine foliar sprays combined with 15 ppm Bonzi prior to shipping improve habit and durability.

Caladiums require moderate feed levels of 200 ppm Nitrogen on a weekly basis. A balanced nutritional package such as 20-6-20, 12-4-12 or controlled release fertilizer is recommended.



Variety	Type	Sun/Shade	Patent #	Primary Color	Crop Time	Height	Pot De-eye	QT	6"	8"	10"	10 HB
Short 12-14"/Intermediate 14-16"/Tall 16"+												
Aaron	Fancy	SUN/SHADE		WHITE	7-9 WKS	TALL	YES		X	X	X	
Allure	Fancy	SHADE	USPP #27,947	WHITE	6-8 WKS	INT	YES		X	X	X	
Apple Blossom	Fancy	SHADE		PINK	6-8 WKS	INT	YES		X	X	X	
Ballet Slippers	Fancy	SHADE	USPP #33,402	PINK	6-8 WKS	INT	YES		X	X	X	X
Berries & Burgandy	Fancy	SUN/SHADE	USPP #28,650	PINK/BRZ	6-8 WKS	TALL	YES		X	X	X	
Bombshell	Fancy	SUN/SHADE	USPP #23,817	RED	6-8 WKS	INT	YES		X	X	X	
Candidum Sr	Fancy	SHADE		WHITE	6-8 WKS	TALL	YES		X	X	X	
Carolyn Whorton	Fancy	SUN/SHADE		PINK	7-9 WKS	TALL	YES	X	X	X	X	
Carousel	Fancy	SHADE	USPP #27,097	WHITE/RED	6-8 WKS	INT	YES	X	X	X	X	X
Celebration	Fancy	SHADE	USPP #23,993	WHITE/RED	6-8 WKS	TALL	YES		X	X	X	
Classic Pink	Fancy	SHADE	USPP #27,093	PINK	6-8 WKS	INT	YES	X	X	X	X	X
Crystal Moon	Fancy	SHADE	USPP #32,523	WHITE	6-8 WKS	TALL	YES	X	X	X	X	
Freckles	Fancy	SUN/SHADE	USPP #27,943	MULTI	6-8 WKS	TALL	YES		X	X	X	
Freida Hemple	Fancy	SHADE		RED	6-8 WKS	INT	YES	X	X	X	X	
Just Saucy	Fancy	SHADE	USPP #31,568	PINK	6-8 WKS	INT	YES	X	X	X	X	
Monument	Fancy	SUN/SHADE	USPP #27,948	WHITE	6-8 WKS	TALL	YES		X	X	X	
Moonlight	Fancy	SUN/SHADE	USPP #14,565	WHITE	6-8 WKS	INT	YES	X	X	X	X	
Party Punch	Fancy	SUN/SHADE	USPP #24,002	PINK	6-8 WKS	INT	YES	X	X	X	X	X
Pink Beauty	Fancy	SHADE		PINK	5-7 WKS	INT	NO	X	X	X	X	
Pink Splash	Fancy	SHADE	USPP #23,792	PINK	6-8 WKS	TALL	YES		X	X	X	
Postman Joyner	Fancy	SUN/SHADE		RED	6-8 WKS	TALL	YES		X	X	X	
Red Alert	Fancy	SUN/SHADE	USPP #27,096	RED	5-7 WKS	INT	NO	X	X	X	X	X
Red Flash	Fancy	SUN/SHADE		RED	8-10 WKS	TALL	YES		X	X	X	
Restless Heart	Fancy	SUN/SHADE	USPP #29,561	RED	6-8 WKS	TALL	YES		X	X	X	
Rio Summer	Fancy	SUN	USPP #32,602	RED	6-9 WKS	INT	YES	X	X	X	X	X
Southern Charm	Fancy	SUN/SHADE	USPP #27,942	WHITE/BURG	6-8 WKS	INT	YES	X	X	X	X	
Summer Breeze	Fancy	SHADE		WHITE/PINK	6-8 WKS	INT	YES	X	X	X	X	X
Sunset Pink	Fancy	SHADE	USPP #31,310	PINK	6-8 WKS	TALL	YES		X	X	X	
Waters Edge	Fancy	SUN/SHADE	USPP #27,965	WHITE	6-8 WKS	TALL	YES		X	X	X	
White Cap	Fancy	SUN/SHADE	USPP #23,815	WHITE	6-8 WKS	TALL	YES		X	X	X	
White Christmas	Fancy	SUN/SHADE		WHITE	6-8 WKS	INT	YES	X	X	X	X	
White Queen	Fancy	SHADE		WHITE/PINK	7-9 WKS	TALL	YES		X	X	X	



WHITE CAP & PUPPY LOVE

Variety	Type	Sun/Shade	Patent #	Primary Color	Crop Time	Height	Pot De-eye	QT	6"	8"	10"	10 HB
Short 12-14"/Intermediate 14-16"/Tall 16"+												
Candyland	Strap	SUN/SHADE	USPP #18,766	PINK	6-8 WKS	INT	YES	X	X	X	X	X
Day Dreamer	Strap	SUN/SHADE	USPP #29,563	WHITE	6-8 WKS	TALL	YES		X	X	X	
Debutante	Strap	SHADE	USPP #25,423	WHITE	6-8 WKS	INT	NO	X	X	X	X	X
Desert Sunset	Strap	SHADE	USPP #25,421	PINK/BRZ	6-8 WKS	INT	YES	X	X	X	X	X
Flare	Strap	SUN/SHADE	USPP #25,426	ROSE/RED	6-8 WKS	INT	YES	X	X	X	X	X
High Society	Strap	SUN	USPP #31,277	WHITE	7-9 WKS	SHORT	YES	X	X	X	X	X
Miss Muffet	Strap	SHADE		CHR/GREEN	5-7 WKS	INT	YES	X	X	X	X	X
MT Everest	Strap	SUN/SHADE	USPP #18,764	WHITE	7-9 WKS	TALL	YES		X	X	X	
Peppermint	Strap	SHADE	USPP #22,214	PINK/WHITE	6-8 WKS	INT	YES	X	X	X	X	X
Pink Gem	Strap	SHADE		PINK/SAL	6-8 WKS	SHORT	YES	X	X	X	X	X
Puppy Love	Strap	SUN/SHADE	USPP #33,615	PINK	6-8 WKS	INT	YES	X	X	X	X	X
Red Frill	Strap	SUN/SHADE		RED	6-8 WKS	SHORT	YES	X	X	X	X	X
Red Glamour	Strap	SUN/SHADE	USPP #33,615	RED	6-8 WKS	INT	YES	X	X	X	X	X
Red Hot	Strap	SUN/SHADE	USPP #25,998	RED	6-8 WKS	INT	YES	X	X	X	X	X
Red Ruffles	Strap	SUN/SHADE	USPP #13,136	RED	7-9 WKS	INT	YES	X	X	X	X	X
Rosemary	Strap	SUN/SHADE	USPP #20,993	ROSE/RED	5-7 WKS	INT	YES	X	X	X	X	X
Sangria	Strap	SUN/SHADE	USPP #26,263	ROSE/RED	6-8 WKS	INT	YES	X	X	X	X	X
Starburst	Strap	SUN/SHADE	USPP #20,091	PINK	6-8 WKS	INT	YES	X	X	X	X	X
Sweetheart	Strap	SHADE		PINK	6-8 WKS	INT	YES	X	X	X	X	X
Tiki Torch	Strap	SUN/SHADE	USPP #26,264	RED/CHR	6-8 WKS	SHORT	YES	X	X	X	X	X
WH. Delight	Strap	SUN/SHADE	USPP #21,216	WHITE	6-8 WKS	INT	YES	X	X	X	X	X
WH. Diamond	Strap	SUN/SHADE	USPP #22,215	WHITE	5-7 WKS	INT	YES	X	X	X	X	X
WH. Dynasty	Strap	SUN/SHADE	USPP #22,240	WHITE	6-8 WKS	INT	YES	X	X	X	X	
WH. Majesty	Strap	SUN/SHADE	USPP #25,422	WHITE	6-8 WKS	TALL	YES		X	X	X	
WH. Marble	Strap	SUN/SHADE	USPP# 18,819	WHITE	7-9 WKS	TALL	YES		X	X	X	X
White Pearl	Strap	SUN/SHADE	USPP #26,265	WHITE	6-8 WKS	SHORT	YES	X	X	X	X	X



**BERRIES N' BURGUNDY & STARBURST**



ATLANTIC BEAUTY



CLEOPATRA



KRETA



MADERIA



PRETORIA



RED VELVET



TENERIFE







Plant one 2-3 eye Classic Canna® Rhizome in an 8 inch/1.00-GAL pot or larger. When planting in larger containers, use this metric as pot size increases: 2 Rhizomes per 2.00-GAL and 3 Rhizomes per 3.00-GAL. Shake peat moss from Rhizomes. You may notice a dried darkened outer layer of the cane and some sprouting or rooting may have occurred. This is normal. Shoots should be firm. Size of cane will vary depending on variety and life stage at time of harvest.

#### **In warmer, hotter Southern Markets:**

Plant in January for April flower. 10-11 Week Crop. As the temperatures warm-up, the crop time will become shorter. This is a Spring to Fall crop including both shoulder seasons. Suggest a 6-8 ppm bonzi drench as first leaves unfold to keep them a shippable height.

#### **In the Mid-Atlantic:**

Plant in early March for late May flower. 10-11 Week Crop time depending bottom heat and/or growing inside/outside. As the temperatures warm-up, the crop time will become shorter. Suggest a 4 ppm bonzi drench as first leaves unfold to keep them a shippable height.

#### **Northern and West Coast:**

Growers should start them inside to have a May crop. If you start them outside in May, they will be in flower by the end of July. Start them inside in March to finish by May—to ship during high foot traffic times. Suggest a 2 ppm bonzi drench as first leaves unfold to keep them a shippable height.

Based on our experiences and current knowledge of the crop here in Florida, Classic Canna® culture and guidelines are continually being updated as we learn more about the crop. Planting the rhizome base 2-3" below soil line with 2-3" of stalk above soil line. If a sprout is present, orient the rhizome upwards with base of shoot slightly below soil line. Larger shoots will be sticking out of the soil.

Once planted, apply a preventative drench of a broad-spectrum curative/preventative fungicide. This can include trade names such as Cleary, Heritage, and Subdue. Cannas need evenly moist soils and tend to require more water than most crops and are best grown in full sun. Slow-release fertilizer blend 16-6-11 applied at 12g per 1.00-GAL and 40g per 2-GAL container Harrell's or Floriken equivalent. In large 1.00 to 3.00-GAL containers, space them about 10-16 inches apart.



ALOCASIA



ALOCASIA SUMO



COLOCASIA



ALOCASIA SUMO

Elephant Ears are heavy feeders. For best performance, they require regular feeding fertilizers and rich organic soil with plenty of composted material.

### Recommended Soil Conditions:

A pH from 5.8 to 6.8 is satisfactory Use a fertilizer 15-5-15 Ca/Mg or 17-5-17 Ca/Mg at 200-300 ppm or can be a Controlled Release Fertilizer (CRF) added to soil at rate 4-5 lbs./yard. Another important trace element is calcium, that can be added to the soil, as a calcium carbonate (crushed limestone).

For the height control, apply Bonzi at a rate of 4-6 ppm as a drench—after 2nd leaf unfurls. In warm and humid climates, rates could be increased to 6-8 ppm.

Elephant ear bulbs should be planted where the bottom third to one half of the bulb is buried in the substrate. Recommended growing night temperature is 68-72F and during day time is 75-90F.

It is very important to keep soil temperature at 68-72F during the first three weeks after planting.

Once first leaf unfurls, apply 6 ppm Bonzi as a drench. Alocasias and Colocasias will continually produce new leaves as the older leaves die off. You will want to remove them to promote new growth, especially before shipping to clean up the pot. Upright Elephant ears prefer bright sunlight, unless grown in extremely hot, low humidity climates, where shade will be needed, and watering should be increased. Colocasia is morning sun to afternoon shade.

**Most common problems:** Root Rot, Spider Mites





**Make potting mix**

**Till garden beds**

**Drill irrigation trenches**

**Install termite stations**

**Remove plumbing clogs**

**Drill horizontally**

**Mix paint or cement**

**Drill post holes**

**Drill holes for beach umbrellas**

**Plant potted plants and bulbs**

**and MORE!**





## Power Planter® Size Sheet

WHY DIG WHEN YOU CAN DRILL?

### TOOLS



#### Do-It-All Tree, Shrub & Termite Auger

2"x24" with 1/2" Hex  
2"x48" with 1/2" Hex

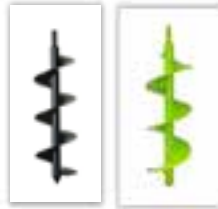
5/8" steel shaft with 1/2" Hex. Digs 23" deep. Perfect for bareroot trees/shrub saplings and several other digging/installation projects.



#### Bedding Plant Tool & Bulb Auger

3"x7" with 3/8" Hex

5/8" steel shaft with 3/8" Hex. Digs up to 6" deep. Perfect for planting small bulbs and 3-4" potted and bedding plants.



#### DIY Guru Bulb Auger

3"x12" with 3/8" Hex

5/8" steel shaft with 3/8" Hex. Digs up to 11" deep. Perfect for most household projects, including planting, mixing paints and more.



#### Extended Length Bulb Auger

3"x24" with 1/2" Hex  
3"x30" with 1/2" Hex

5/8" steel shaft with 1/2" Hex. Digs 23" deep. Perfect for small bulbs, 3" potted plants and several other digging/installation projects.



#### Extended Length Bulb Auger

3"x24" with HD Tip  
**PROFESSIONAL GRADE**

5/8" steel shaft with HD Tip. Digs 23" deep. Perfect for mass commercial jobs and hard/less suitable conditions.



#### Large Bulb Auger

4"x28" with 1/2" Hex  
4"x48" with 1/2" Hex

1" steel shaft with 1/2" Hex. Digs up to 26" deep. Perfect for large bulbs and 4"-5" potted and bedding plants.



#### Quart Pot Plant Auger

4"x28" with HD Replacement Parts  
**PROFESSIONAL GRADE**

1" steel shaft with HD Tube. Digs up to 26" deep. Perfect mass commercial jobs and hard/less suitable conditions.



#### Gallon Pot & Posthole Auger

7"x28" with 1/2" Hex

1.25" steel shaft with 1/2" Hex. Digs up to 26" deep. Perfect for gallon potted plants, shrubs and 4"x4" posthole digging.



#### Gallon Pot & Posthole Auger

7"x28" with HD Replacement Parts  
**PROFESSIONAL GRADE**

1.25" steel shaft. Digs up to 26" deep. Perfect mass commercial jobs and hard/less suitable conditions.



#### Extra Large Earth Auger

9"x28" with HD Replacement Parts  
8"x28" with HD Replacement parts  
**PROFESSIONAL GRADE**

1.25" steel shaft with HD Tube. Digs up to 26" deep. Perfect for three gallon potted plants and 6"x6" posthole digging.

## Ultimate Professional Landscaper Kit

This special combination includes a complete DeWALT 60V kit, a set of 3 heavy duty augers and 2 additional backup batteries

- 3" x 24"
- 5" x 28"
- 7" x 28"





## Retail Ready

Our retail ready POP displays hold **27 or 54** augers in a range of sizes.

Power Planter connects to cordless drills in a snap so you stop digging and start DRILLING!

## Product Features:

- Holds 27 or 54 augers
- Easy to set up
- Free with qualifying order





## Testimonials

**“Great products with very reasonable pricing!”**

“Ferris State University has been using Power Planter earth augers for over 10 years. We have come to rely on their quality and effectiveness.”

*Will Gasper, Grounds Manager, Ferris State University*

**“I have been very impressed with Power Planter auger drill bits.”**

“I have bought and utilized Power Planters for each of the past three years to individually install about 30,000 native grass plants per year. The durability of Power Planter bits has made planting in areas with large tree roots and compacted soil very fast and easy.”

*Matt Jones, Senior Assistant Superintendent, Old Chatham Golf Club*

“We have not used a shovel to install product since we purchased the Landscape Kit, with heavy duty augers offered by these folks. It truly speeds us up, cuts labor significantly and makes our job a little easier, they have changed the way we do business.”

*Elderberry Farms, North Carolina*



# Caladiums & More

In memory of co-owner Richard Hollander  
March 3, 1965 – June 19, 2023



10221 Corkwood Road  
Suite #120  
Dallas, TX 75238

(214) 341-1585  
[www.abbott-ipco.com](http://www.abbott-ipco.com)