



HDE 750 2TMT ASPHALT MAINTENANCE TRAILER



*May show Options

STANDARD FEATURES

- Equipment Platform
- 12 volt trickle charger
- 4-100 pound LPG quick fill tank
- Tool storage rack
- Hour/Battery meter
- Grote led lighting
- Electric Brakes

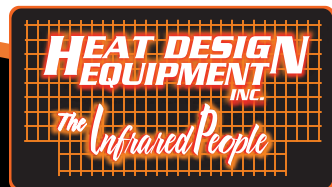
OPTIONS

- Surge Brakes
- Pylon Holder
- Strobe Light
- Directional Arrow Board
- Tool Rinse Tank

The **HDE** asphalt maintenance trailer is a turnkey infrared asphalt repair machine that will heat up and soften a localized area of the surface course asphalt, allowing for the area to be re-worked and compacted fixing any surface deterioration. The highly efficient infrared heaters can soften the top **2.5"** of asphalt to the original mixing temperatures in **5 to 10** minutes without burning the asphalt.

Potholes, surface cracks, bad joints, bird baths, catch basins, and manholes can be economically repaired with minimal time expended and minor traffic re-routing throughout the year. The HDE asphalt heaters have also proven well for pre-heating of the asphalt for cold weather paving.

The unit is equipped with a **8.2"x6.6"** heater deck and a **2** ton reclaimer. The unit has capacity for four 100 pound liquid propane cylinders. This will operate the heating deck and reclaimer for approximately **15-20 hours**.



The **HDE 2 TON MAINTENANCE TRAILER** hotbox reclaimer will maintain proper working temperature of the asphalt for up to 48 hours. The hopper is heated by two infrared heaters. A **24-volt digital** temperature controller monitors the hopper and powers the ignition systems as it requires to keep the material pliable. The automatic spark ignition has a built in safety that will shut the gas off if the flame goes out. The HDE infrared heaters allow for uniform heat without overheating the asphalt. Ventilation in the box allows the hot air to move evenly around the box. Vents inside the hopper allow hot air from the heating chamber to heat the top portion of the hopper. The dual hopper allows for better heat distribution when being used as a hot box and assists in the reclaiming of cold asphalt. The loading doors open to form a chute for easy loading of virgin hot mix at the plant or chunks of cold asphalt for reclaiming. Unloading doors lock in the up position to prevent accidental closing during unloading. The sloped dual hopper allows easy removal of hot mix.

The **HDE Asphalt Hot Box Reclaimer** is capable of both maintaining the temperature of virgin asphalt and reheating cold material to workable temperature. The **HDE Asphalt Hot Box Reclaimer can be used 365 days a year** whether it is using material from the local asphalt plant or recycling left-over material to create a hot patching material in the middle of winter. Reheating left over materials eliminates the need of disposal and can drastically reduce the amount of cold patch material needed to repair problem areas. The reheating process can take **8-12 hours** depending on the ambient temperatures and the amount of asphalt that is being heated. By using a digital temperature controller we are able to heat the asphalt safely until it has reached the desired temperature. The controller prevents any burning of the asphalt by turning the heaters off at a preset temperature (e.g. 300 degrees F).

- ▼ Waste asphalt is loaded into the top of the reclaimer. The thermostat is set to the desired temperature and heated for a period of 8-16 hours depending on the condition of the material
- ▼



ASPHALT MAINTENANCE TRAILER

HDE 750 2TMT



PATENTED CARTRIDGE SYSTEM

HDE's replaceable ceramic cartridge allows for easy replacement of the heating element. Typical cartridge life is about 1,500 hours and can be changed in less than 20 minutes. This patented design prevents the heat from transferring to the heater plenum (top), thus extending the life of the heater.



ADJUSTABLE TEMPERATURE

HDE's heaters are capable of running at pressures from 5 PSI up to 50 PSI. HDE's unique High/Low system allows the operator to heat the patch with higher temperature for the first 5 minutes followed by 5 minutes of low heat. This enables the operator to reduce the fuel usage while the heat is penetrating deeper into the already heated patch.



VAPORIZER

The C.G.A. approved vaporizer converts the liquid propane to vapor gas. Unlike conventional vapor heating systems, a liquid system will not freeze up and can operate on 1 propane tank at a time with temperatures of -15°F (-25°C). Operating on liquid propane allows the truck to carry less propane and can empty a tank completely.



TRAILER SUSPENSION

All HDE trailers are equipped with Dexter TORFLEX® Rubber Torsion Axles.



FULL HYDRAULICS

The heater deck raises and lowers hydraulically by two 3" cylinders that are controlled from either side of the trailer. The reclaimer doors also open hydraulically. A built in safety (Velocity Fuse) allows for the heater deck to lower slowly in case of a hose rupture.



ROLLER PLATFORM

The HDE Roller Lift (patent pending) is designed to lift any type of single drum asphalt roller or plate tamper effortlessly from the ground and place it on the deck of the truck. The unit is hydraulically powered and is controlled by a single push button located beside the lift. The roller is secured by a clevis and locked into position onto the truck.



CONTROL SYSTEM

The industry first PLC/HMI control panel allows even more control and monitoring of the entire system. The advance function includes the following:

- Reclaimer temperature control
- Reclaimer and heater hour meter
- Hydraulic controls
- Safety lock-out
- High/Low fire timer



FUEL USAGE

A standard 8.2 x 6.6 heating deck has 10 heaters that can be shut off individually. With all 10 heaters running the machine would cost about \$10 - \$16/hour.

That equals about an average of 2.5 100 lb tanks per day. By controlling the number of heaters that are used and the pressure of the heaters the amount of fuel used can be increased or reduced.

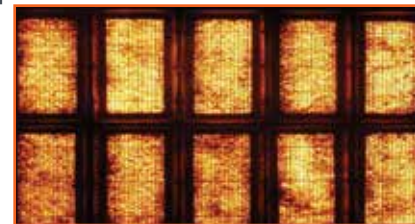
OPTIONAL SIDE SHIFT

The Optional Side Shift On the HDE heating panel allows for greater maneuverability and less wasted time when positioning over the patch. This plays an important roll when working up against curbs and buildings.



Adjustable Height On Heat Panel

The HDE Heating Panel can adjust In Height from 10" from the asphalt surface to 2" to the asphalt surface. The height of the heating panel has a direct relation to how deep the infrared rays penetrate into the pavement surface This aids in the intensity of the heat into the pavement.



HEAT ZONES

The infrared rays are emitted from the entire heater surface area, this eliminates cold spots and allows for more heat to be directed at the pavement while using less fuel.

The HDE 750 has up to 10 infrared heaters that can all be controlled individually, this unique design allows for a variety of heat patterns and the most flexibility when patching.