

# LOCAL 110 NEWS

THE OFFICIAL PUBLICATION OF LABORERS' LOCAL 110



SCHOOL DRIVE



FOOD DRIVE



2019



RETIREE DAY AT THE BALLPARK



GRANT'S FARM PICNIC



LABOR DAY PARADE

**LiUNA!**  
*Feel the Power*

**INSIDE**

Local 110 Happenings .....	1
Upcoming Member Events .....	2
Around the Council .....	3
Business Manager's Message .....	6



## CAN-GOOD DRIVE AT THE ANNUAL LOCAL 110 MEMBERSHIP PICNIC

LIUNA Laborers #110 for the second year in a row partnered with the Arnold Food Pantry at the Grants Farm family picnic to feed the hungry. Two Arnold Food Pantry vans were used to collect and transport can-goods donated by working families of LIUNA Laborers Local 110. The Arnold Food Pantry recognized as the largest food distribution center in the St. Louis Region receiving no federal, state or United Way funding received just short of two tons in can-goods collected last year. This year the morning short rain didn't damper enthusiasm for the family picnic or the generosity of working families bringing can-goods to feed the hungry. This year thanks to everyone involved (5,129 pounds) of food and \$2,593.68 was collected at the entrance of Grants Farm exceeding last year's record by over a half of ton of can-goods.

Arnold Food Pantry President Phil Amato was so excited when the final totals Sunday morning were tabulated. Amato stated: "I am so proud of the continuing relationship the Arnold Food Pantry has with LIUNA Laborers Local

110 in our quest to help feed the hungry. We are so proud and humbled by what Local 110 is able to do in helping people less fortunate. Organized Labor helped us in 2012 remodel our new location with donating labor, and helped us seek out donated or discounted materials for the renovation. The Arnold Food Pantry was named that year as the civic project of the year for Organized Labor by the Labor Tribune Newspaper. If the economy ever tanks again we have pledged to always be working families safety net. Now that the economy for the most part is doing good, Laborers 110 is ours. Thank you to the men and women of Local 110 for their support."



## LOCAL 110 RECOGNIZED

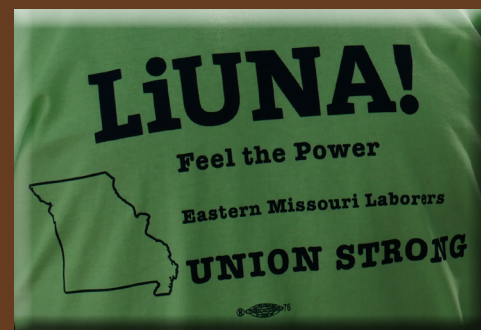


Business Manager Don Willey received the 2019 Chairman Champion award from the Hispanic Leaders Group of Greater St. Louis for his leadership and support of the Latino community.

He was recognized for the efforts of Local 110 employing Latino workers, monetary support of the scholarship program and generally being a champion of issues facing the Latino community as a whole.



*A big thanks to all the members and their families who came out to the 2019 Labor Day Parade!*



# 2020 EMLDC MEMBER EVENTS

## *Sporting Clay Shoot*

*Date: To Be Determined*

*Blackhawk Valley Shooting Preserve  
Old Monroe, MO*



## *16th Annual Crappie Tournament*

*May 9, 2020*

*Buzzard's Roost  
Mark Twain Lake*

## *Member's Golf Tournament*

*June 6, 2020*

*Warrenton Golf Course  
Warrenton, MO*



## *Summer Archery Shoot*

*August 15, 2020*

*Laborers-AGC Training Center  
High Hill, MO*

## *Labor Day Parade*

*September 7, 2020*

*Downtown St. Louis  
14th & Chestnut*





# PROJECTS AROUND THE COUNCIL AREA

Laborers across eastern Missouri are playing major roles on several of the state's highest profile projects. Laborers can be found on unique projects from the top of the Missouri State Capitol dome to the new stormwater tunnels being built hundreds of feet below the streets of St. Louis. Here are a few of those interesting projects from around the council:



## ***MO State Capitol Dome and Building Stone Renovation***

Laborers from the Jefferson City local continue work on the exterior renovations of the Missouri Capitol dome and building. Laborers helped remove the statue of Ceres from the top of the Capitol dome.

\*\*\*\*\*



## ***South End Zone Expansion of Faurot Field-University of Missouri***

Laborers completed work earlier this fall on the new \$99 million south end zone facility at University of Missouri's Memorial Stadium. The expansion will provide state-of-the-art training facilities for Mizzou Football, as well as additional seating and game day enhancements including the installation of a new 30'x 80' video

**-3-** board.





### ***New Mississippi River Bridge***

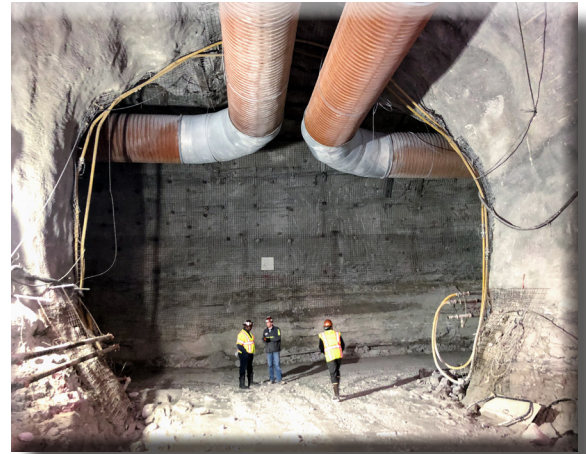
The new Champ Clark Bridge across the Mississippi River Bridge at Louisiana, MO was opened for traffic this fall marking the completion of the construction phase of this project. Laborers are now working on the dismantling of the old bridge that was built in 1928.



\*\*\*\*\*

### ***Wastewater Storage Tunnels***

Laborers in St. Louis are undertaking massive tunneling projects over 200' feet below the streets of St. Louis. These massive tunnels are part of a multi-year, multi-billion dollar construction program by the Metropolitan Sewer District (MSD) to make needed improvements to enhance water quality and help alleviate many wastewater concerns in the St. Louis region.

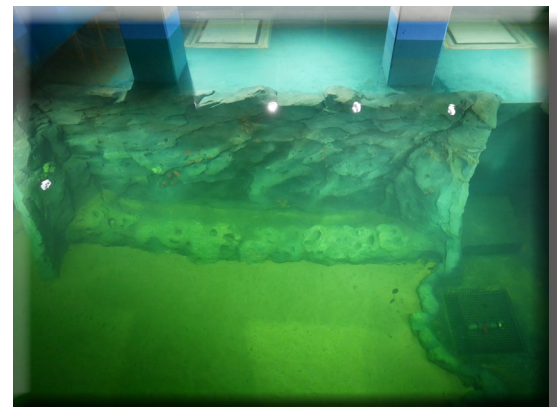


\*\*\*\*\*



### ***St. Louis Aquarium at Union Station***

Union Station in St. Louis has been a landmark for travelers and visitors to St. Louis since the 1890's. Laborers are currently working on a project that when completed will be a must see for families and anyone visiting St. Louis. That project is the St. Louis Aquarium at Union Station which is a state-of-the-art



120,000 square foot aquarium with a 250,000 gallon shark tank, otter exhibit, and numerous other aquatic habitat and interactive exhibits. In addition to the aquarium, a 200' ferris wheel has been installed and is currently in operation. The aquarium is scheduled to open by the end of this year.

Cont'd on page 5...



# It's No Longer Just Picks and Shovels!

The Construction Craft Laborer scopes of work claimed in our Union's 1903 chartering have carried us through the more than 116 years we have been in existence. Our founding and early jurisdictions of mason tending, trench work, concrete work, tunnel work, cleanup and other work continue to be the foundation of what we do. However, with time and technology our union has grown and the work we do has evolved. Technology and training have opened the doors for Laborers to be asked to do more complex tasks and we are willing and able to successfully take on these assignments and show we are much more than just pick and shovel Laborers!



The centerpiece of the new St. Louis Aquarium at Union Station will be the natural aquatic habitat exhibits. McCarthy Construction is the contractor for the project and each of these exhibits has been painstakingly designed and built to provide visitors with a realistic view of sharks, barrier reef fish, otters, river fish and much more in their natural ecosystems. When visitors view these exhibits, they will be amazed at the skill and talent that was required to create such life-like settings. [www. https://www.stlouisaquarium.com/](https://www.stlouisaquarium.com/).

As Laborers visiting the aquarium, you and your families can take great pride in knowing the concrete that was placed and shaped to look just like a coral reef, a riverbed, or a deep-sea ecosystem was all done by Laborers!



Did you know the largest same diameter to diameter tunnel T-Junction in North America is right here in our district council? Did you know that it was done by Laborers?

Working underground comes with its own set of unique

challenges. But, when you are tasked with making a T-junction of two same diameter tunnels that are 28' tall, you have a very unique challenge ahead of you.

This was the challenge facing SAK Construction and the Laborers working on the St. Louis Metropolitan Sewer District's Upper Maline Creek Tunnel project. Figuring out how to form up the intersection to provide for a seamless concrete intersection required ingenuity and out-of-the-box thinking. The Laborers and SAK project team were able to successfully complete this daunting task and engineering feat.



# A Message from Business Manager, Don Willey



## The Best of Times and the Worst of Times

**A**s a Laborer this describes the up-coming winter season and all the holidays involved. The only thing for certain in the construction industry is the uncertainty of the business. This time of year can add to the stress of the Laborer and to their entire family. If you haven't heard, the construction industry is the number one industry affected by addiction and suicide. These two issues are directly linked to mental health. In the past twenty months, five Local 110 members have committed suicide.

When it comes to suicide or addiction, silence is deadly. If you see something say something. Trust your gut feelings when what your loved one, friend or coworker said or did is not quite right. Jump on that awkward feeling and ask them if they are thinking about suicide. At the very least, they will know someone cares about them. Confronting someone about suicide won't make you the cause of a suicide, it will make you the one who reached out and tried to do something. Ask them or yourself who will be the first to find the body. This question could be enough to make them or you consider getting professional help. Call the National Suicide Prevention Lifeline 1-800-273-8255.

Chat – [suicidepreventionlifeline.org/chat/](https://suicidepreventionlifeline.org/chat/)

Text – HELLO to 741741

All these resources and more are on your 110 phone APP under the “Addiction/Mental Health” TAB.

You can't control the economy or weather. You can control your mental and physical health by

using the MAP (Members Assistance Program) provided through the StL Laborers Welfare Fund (314-644-2777) or go on [StLLaborers.com](https://StLLaborers.com).

It is time to raise our level of “Emotional Intelligence” by talking about mental health as we do weight gain or weight loss and other physical conditions. We need to take a family inventory of mental health and addiction through the generations of both sides of the family. Be aware of the possible genetic traits for both. Talk about your work, school or family life. Talk to your doctor about them. Don't let your Doctor prescribe opioids to your kids or you without talking about the family history no one wants to talk about. I have used professional counseling three times in my life only to come through stronger, more open minded, and compassionate than I was before counseling. I raised my EI (Emotional Intelligence). Take charge of your life, increase your EI and remember don't be silent; silence kills.

I would like to give a public shout out to Len Toenjes (Pres. of the AGC of MO), Matt Cowell (Director of Safety for the AGC of MO) and their Executive Board for taking the lead to raise the St Louis construction industry's Emotional Intelligence on mental health and addiction by rolling out a suicide awareness campaign in October 2019 complete with a series of Tool Box talks for all companies to use. Contact Matt Cowell of the AGC to get more information on their awareness campaign or visit [www.agc.org](https://www.agc.org) and search 'toolbox talks'.

Be Good or Get Better:

Fraternally,  
Don Willey  
Business Manager

**LECET LiUNA!**

*Laborer-Contractor Partnerships*

*Feel the Power*

# LOCAL 110 NEWS

**THE OFFICIAL PUBLICATION OF LABORERS' LOCAL 110**

4532 S. Lindbergh Blvd.

St. Louis, MO 63127

PRSR STD

U.S. Postage

PAID

St. Louis, MO

Permit No. 1436

## Local 110 Calendar

Union Meetings held on the 2nd Wednesday of the month at 6:30 p.m.



Local 110 Business Agents stood in solidarity with the striking GM workers of Local 2250 during their "Hold the Line Rally" on September 27<sup>th</sup>.