

SKYLINE HOMES OF ARKANSAS CITY, KANSAS

Spring View

24' • 28' • 32' SERIES



Seeger homes Inc
3800 N Nevada Ave
Colorado Springs, Co
80907

www.seegerhomes.com
719-632-9085

BRINGING AMERICA HOME. BRINGING AMERICA FUN.

24' SERIES

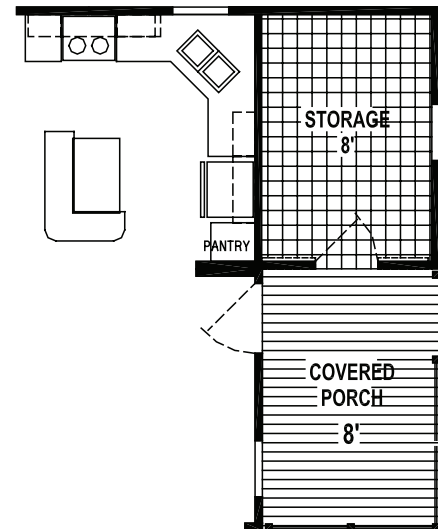
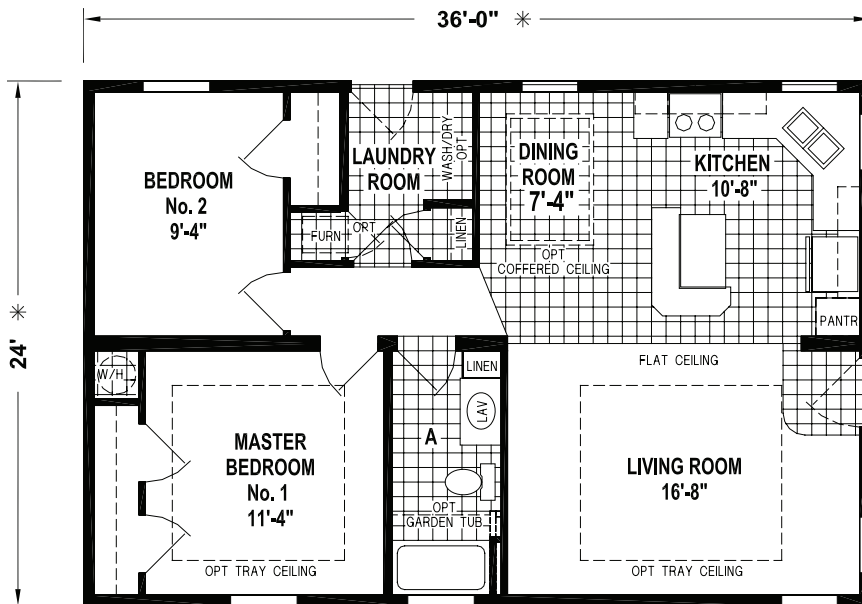


Living is easy in the generously spacious Spring View series by Skyline Homes. The open floor plans and variety of options feature spacious living areas, bedrooms and stylish gourmet kitchens that flow through to dining rooms. Beautiful finishing elements such tile backsplashes and high-end appliances highlight the Spring View line and set it apart from the competition.

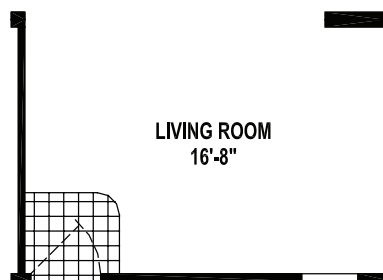
Manufactured in Arkansas City, Kansas and backed by over 65 years of manufacturing experience, a 15-month warranty and stellar customer service – take a look for yourself to see why the Spring View series by Skyline Homes is the right decision for you and your family.

5882/3624

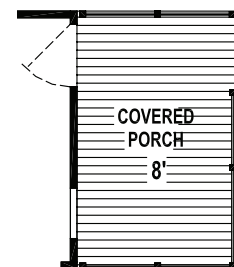
873 SQ. FT. – 2 BEDROOM – 1 BATH



OPTION PORCH / STORAGE



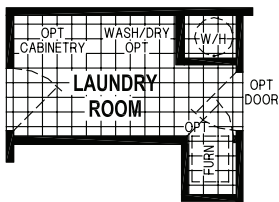
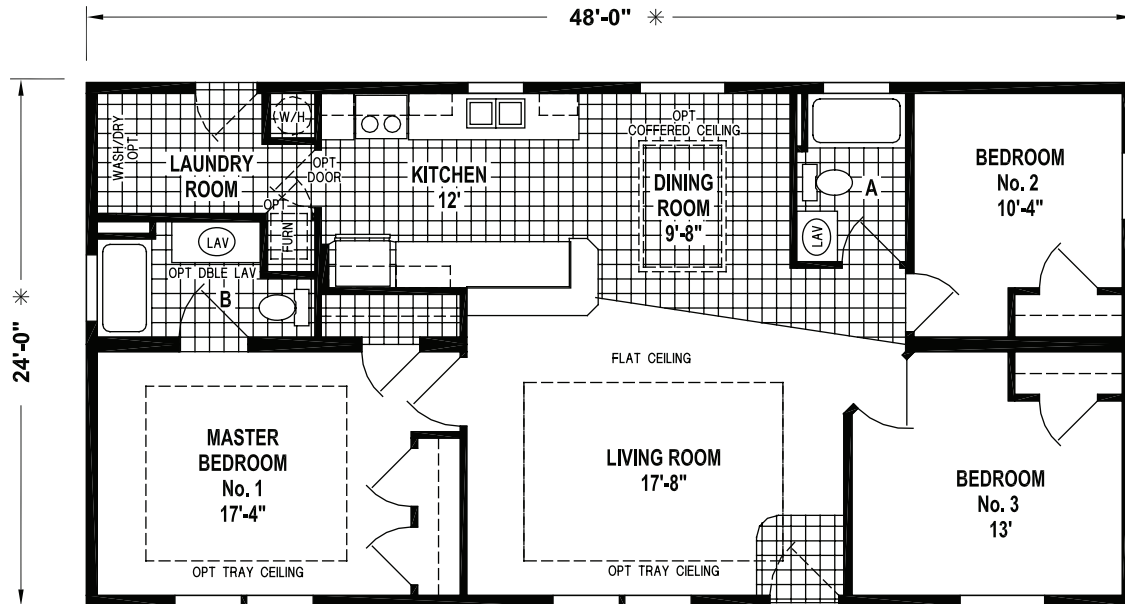
ALTERNATE DOOR LOCATION



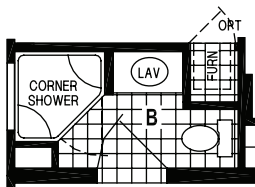
OPTION PORCH

5828/4824

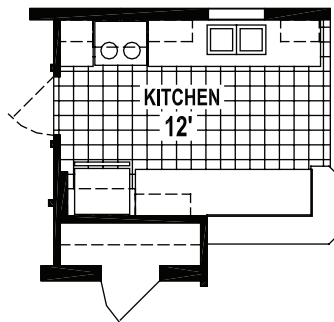
1,158 SQ. FT. - 3 BEDROOM - 2 BATHS



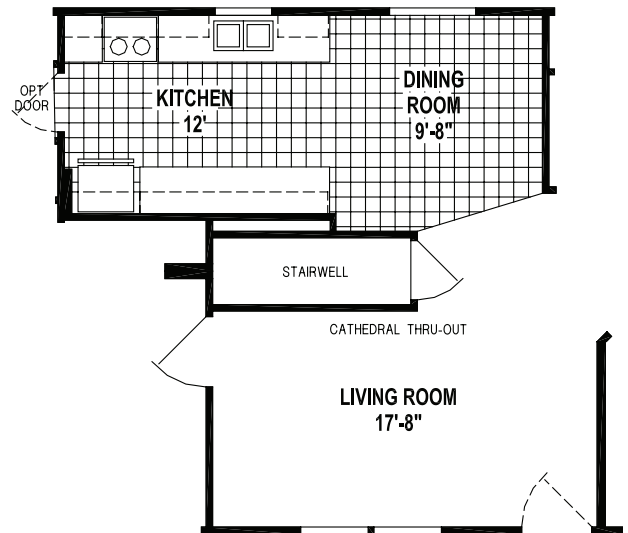
OPTION LAUNDRY ROOM



OPTION CORNER SHOWER BATH



ALTERNATE HIGH/LOW KITCHEN



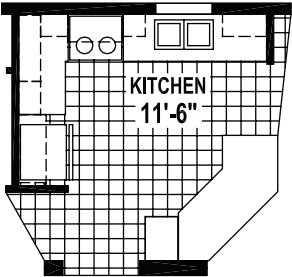
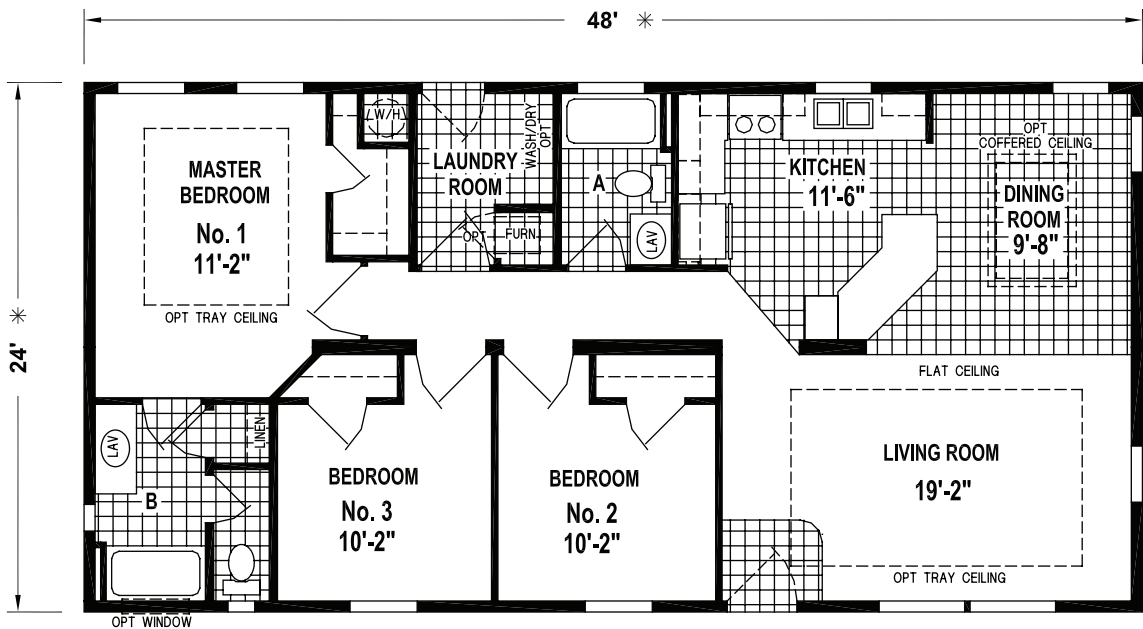
OPTION STAIRWELL

SKYLINE HOMES -
COMMITTED TO QUALITY
CRAFTSMANSHIP, VALUE &
CUSTOMER SATISFACTION

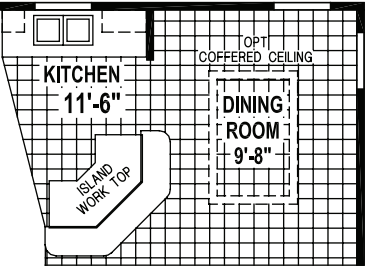
24' SERIES

5832/4824

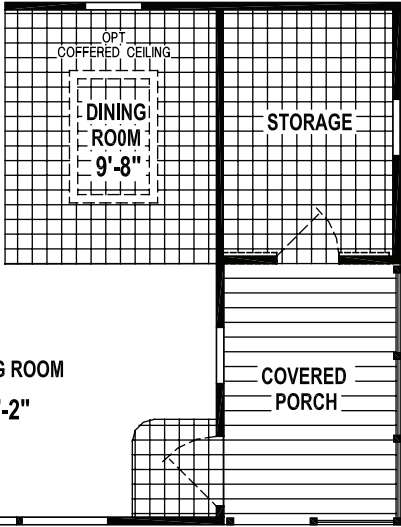
1,150 SQ. FT. - 3 BEDROOM - 2 BATHS



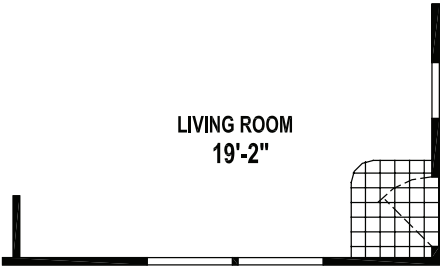
ALTERNATE HIGH/LOW KITCHEN



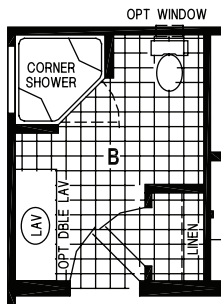
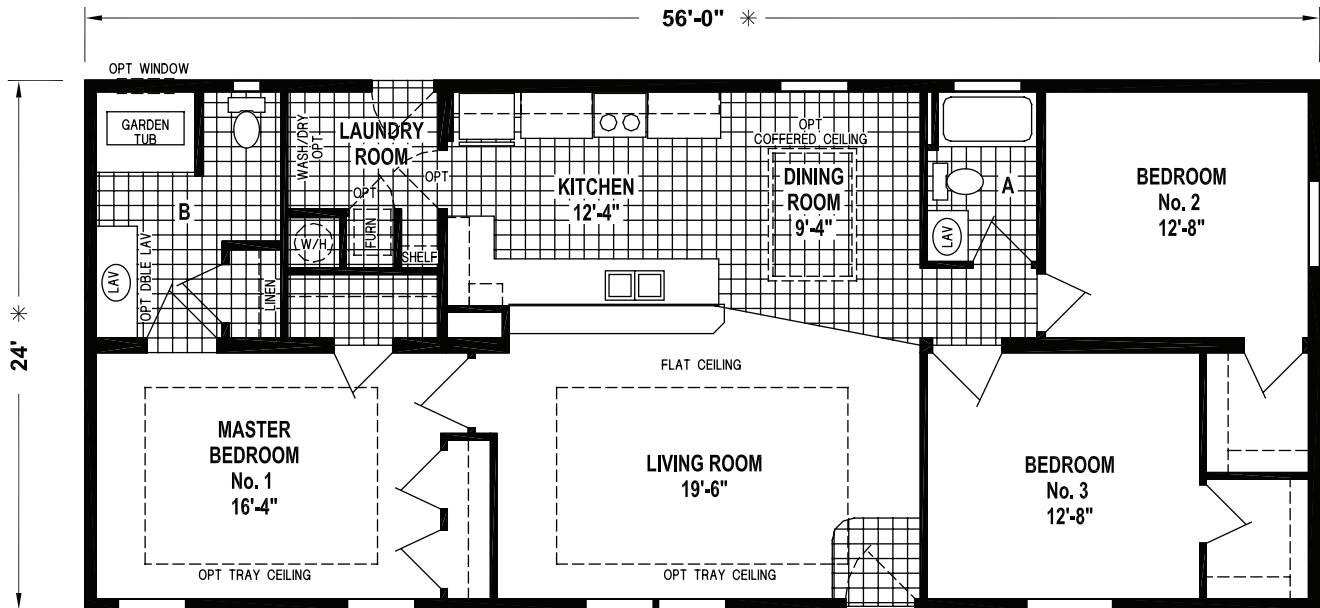
OPTION KITCHEN ISLAND



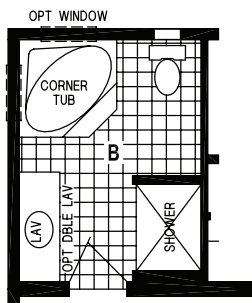
OPTION PORCH AND STORAGE
REQUIRES 56' BOX AND FRAME



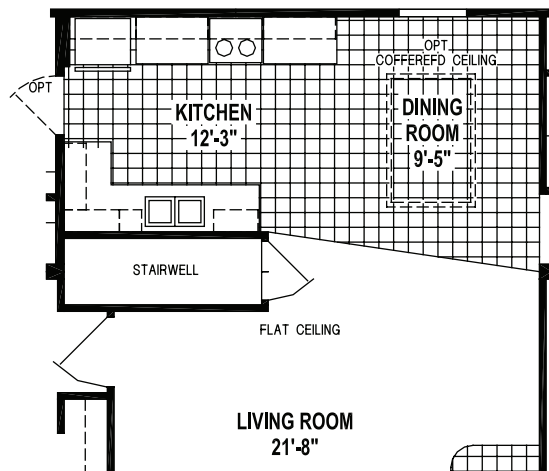
ALTERNATE DOOR LOCATION



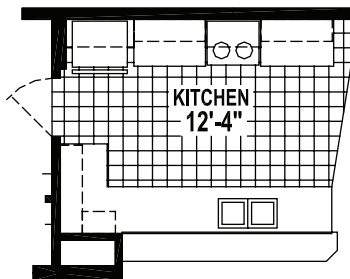
OPTION CORNER SHOWER BATH



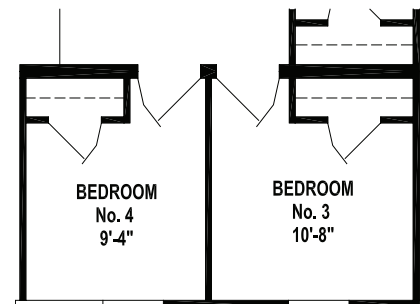
OPTION DELUXE BATH



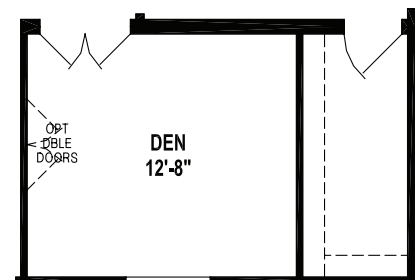
OPTION STAIRWELL



ALTERNATE HIGH/LOW KITCHEN



OPTION 4TH BEDROOM



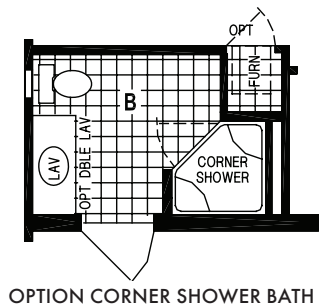
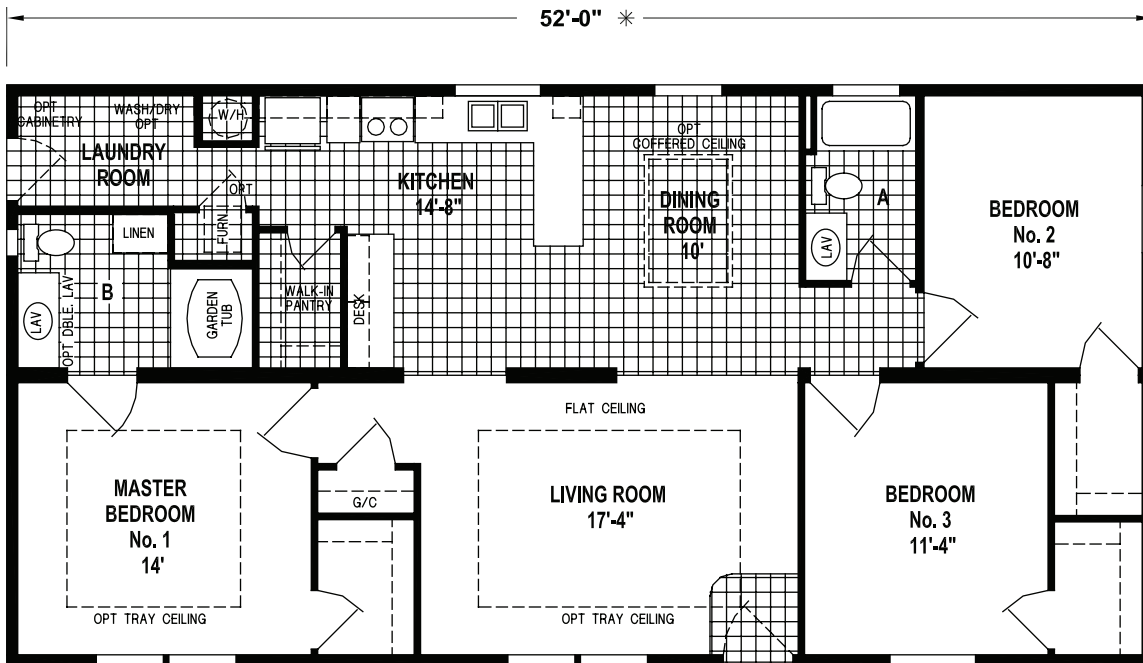
OPTION DEN



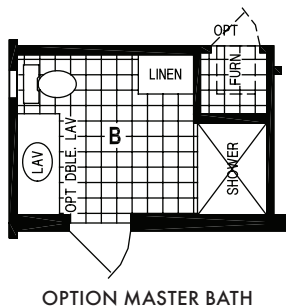
28' SERIES

6655/5228

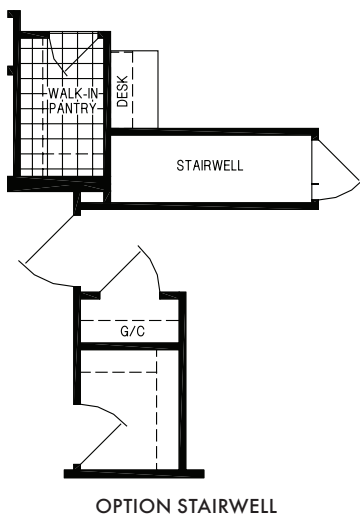
1,383 SQ. FT. – 3 BEDROOM – 2 BATHS



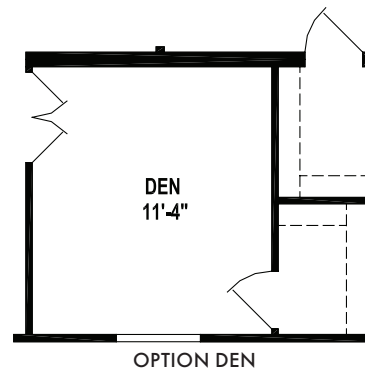
OPTION CORNER SHOWER BATH



OPTION MASTER BATH



OPTION STAIRWELL



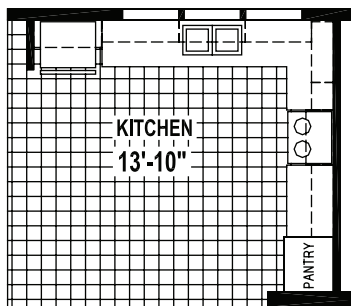
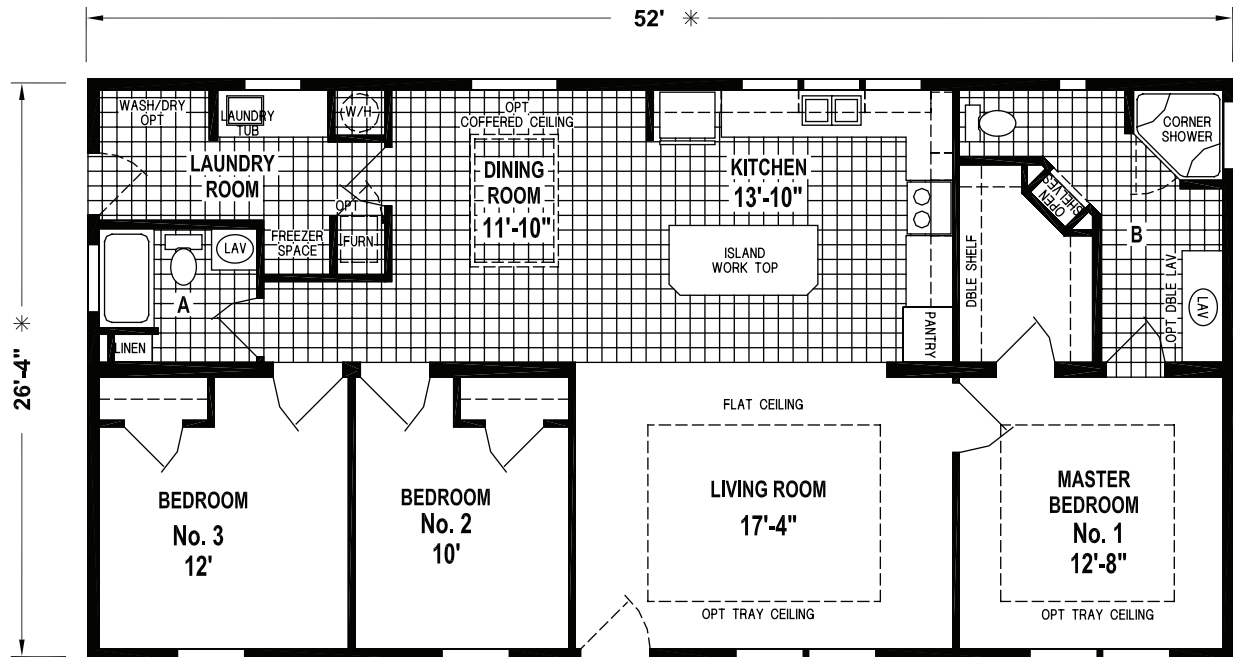
OPTION DEN



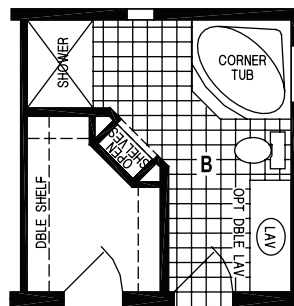
OPTION LAUNDRY ROOM

6687/5228

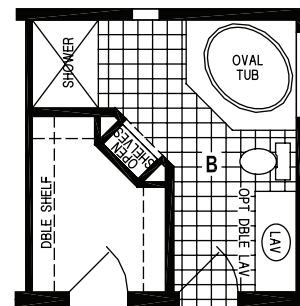
1,369 SQ. FT. - 3 BEDROOM - 2 BATHS



ALTERNATE HIGH/LOW KITCHEN



OPTION DELUXE BATH



OPTION OVAL TUB BATH

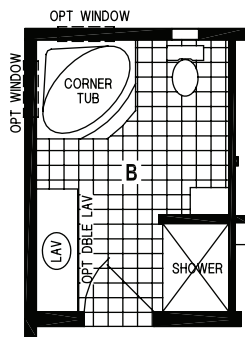
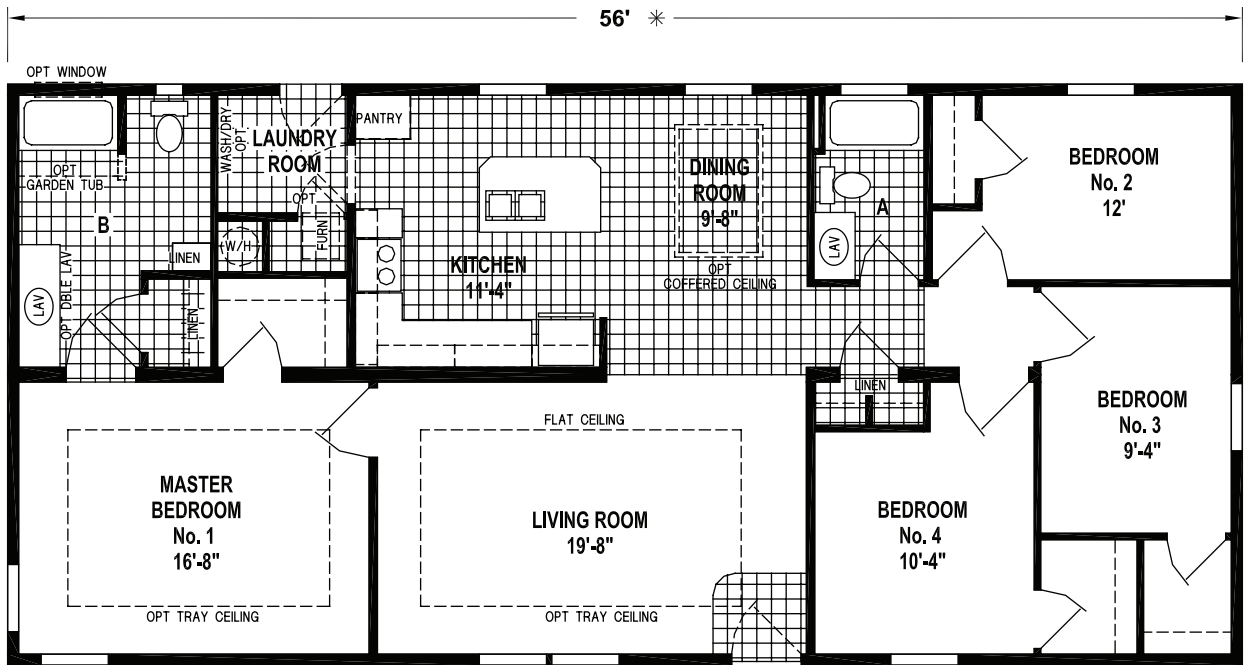


All Skyline homes are covered by our no-nonsense 15-month warranty, the very best in the industry. It's our way of showing our customers how much we believe in the quality we build into every Skyline home. Our warranty gives new homeowners the assurance that comes from working with a company with more than six decades of building.

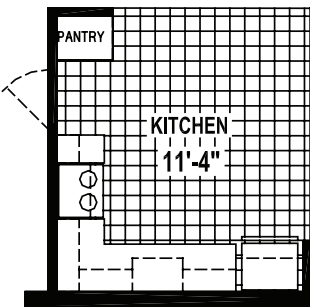
28' SERIES

6662/5628

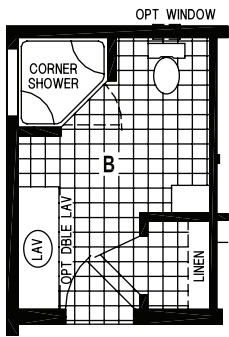
1,485 SQ. FT. - 4 BEDROOM - 2 BATHS



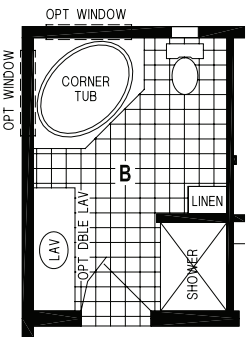
OPTION DELUXE BATH



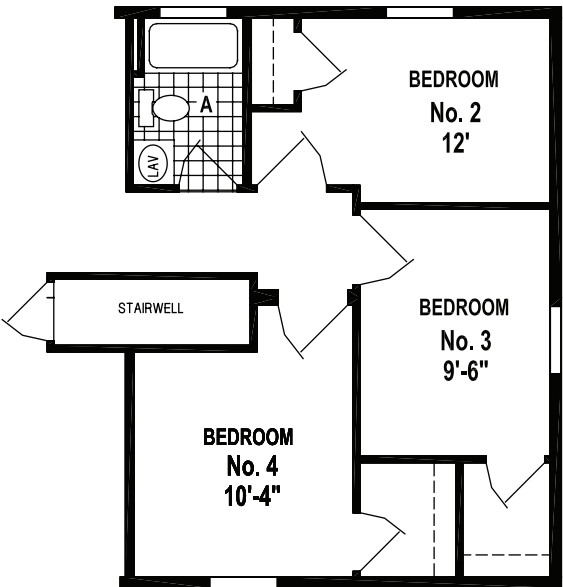
ALTERNATE HIGH/LOW KITCHEN



OPTION CORNER SHOWER BATH



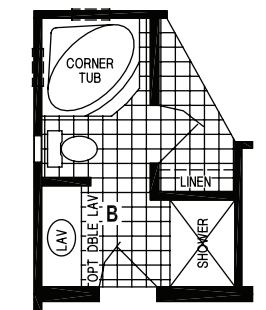
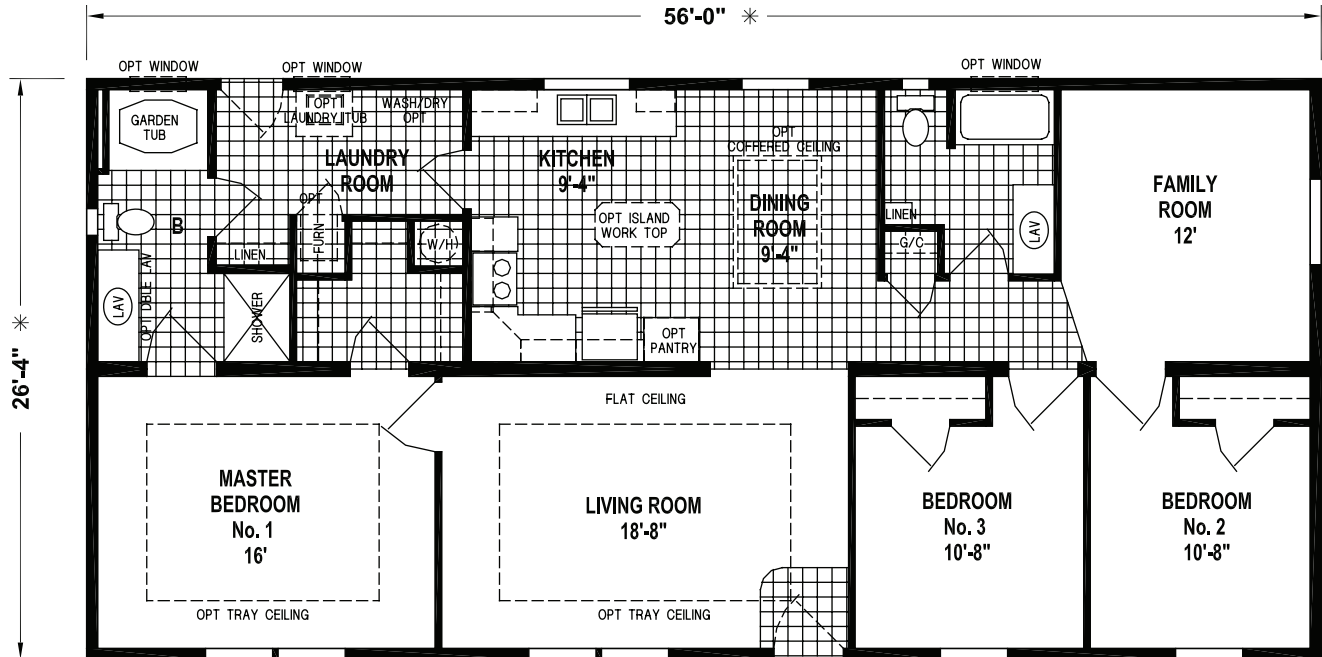
OPTION OVAL TUB BATH



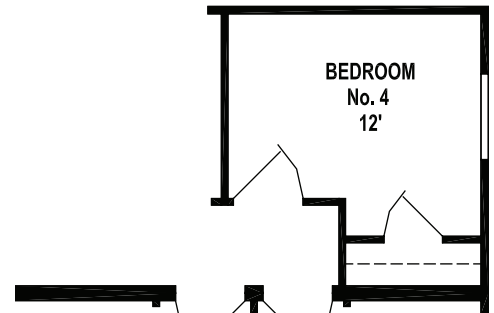
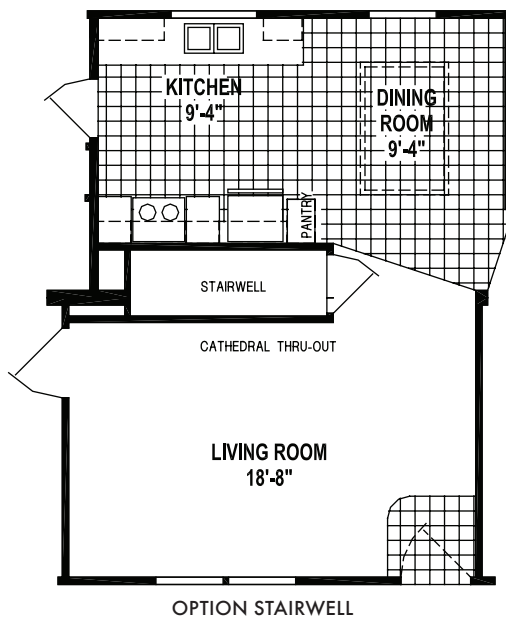
OPTION STAIRWELL

6679/5628

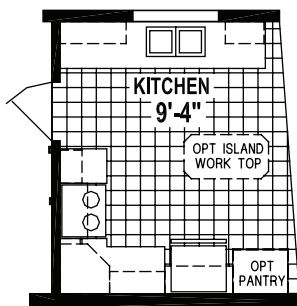
1,485 SQ. FT. - 3 BEDROOM - 2 BATHS



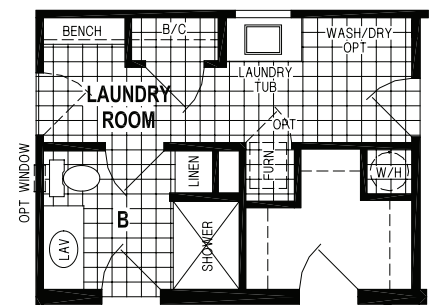
OPTION CORNER TUB BATH



OPTION 4TH BEDROOM



OPTION HIGH/LOW KITCHEN

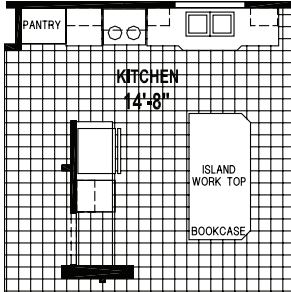


OPTION LAUNDRY ROOM / MASTER BATH

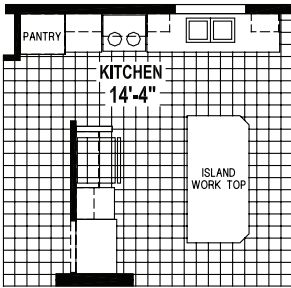
32' SERIES

6865/5232

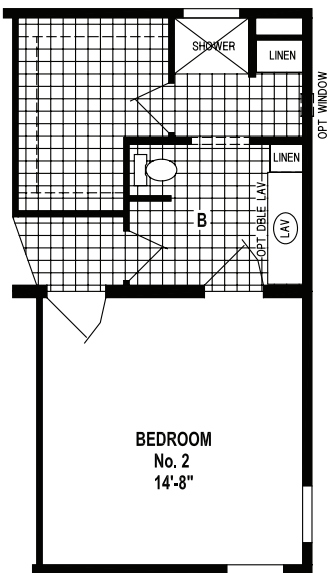
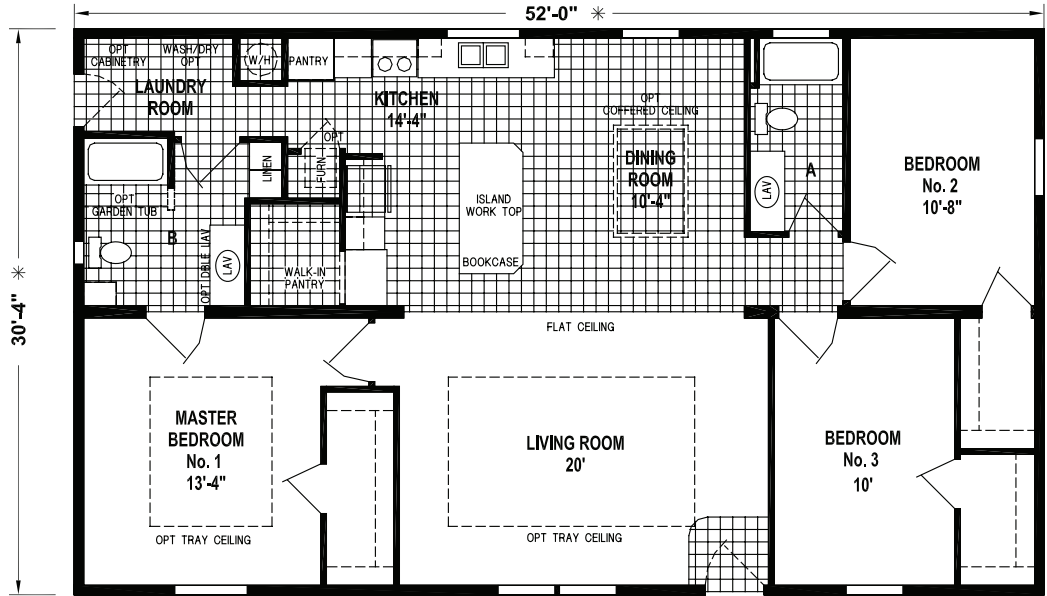
1,588 SQ. FT. - 3 BEDROOM - 2 BATHS



OPTION BUMP UP AND OUT KITCHEN



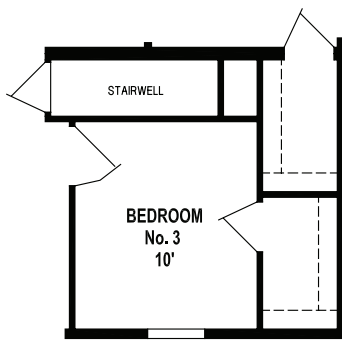
ALTERNATE HIGH/LOW KITCHEN



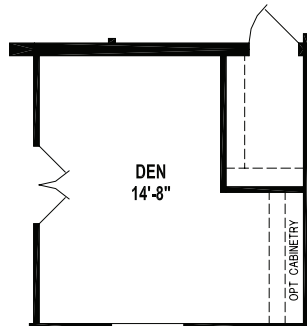
OPTION 2 BEDROOM CONFIGURATION



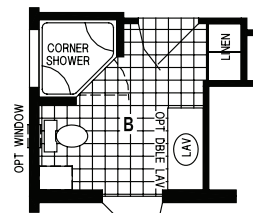
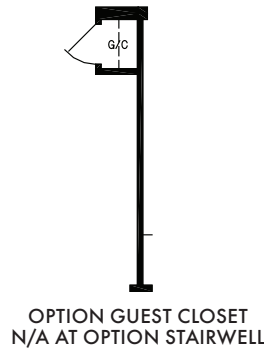
OPTION LAUNDRY ROOM



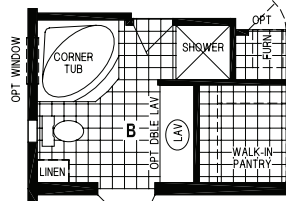
OPTION STAIRWELL



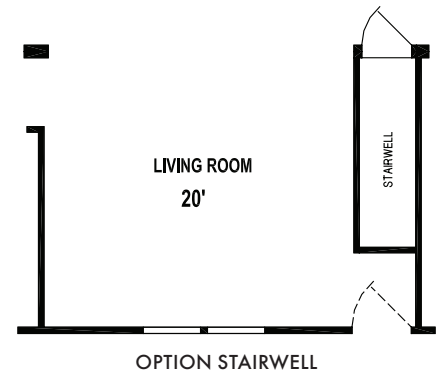
OPTION DEN



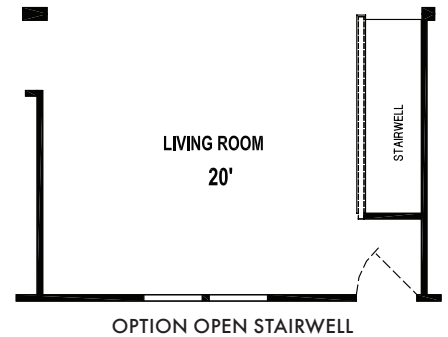
OPTION CORNER SHOWER BATH



OPTION DELUXE BATH



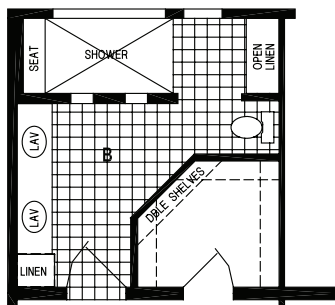
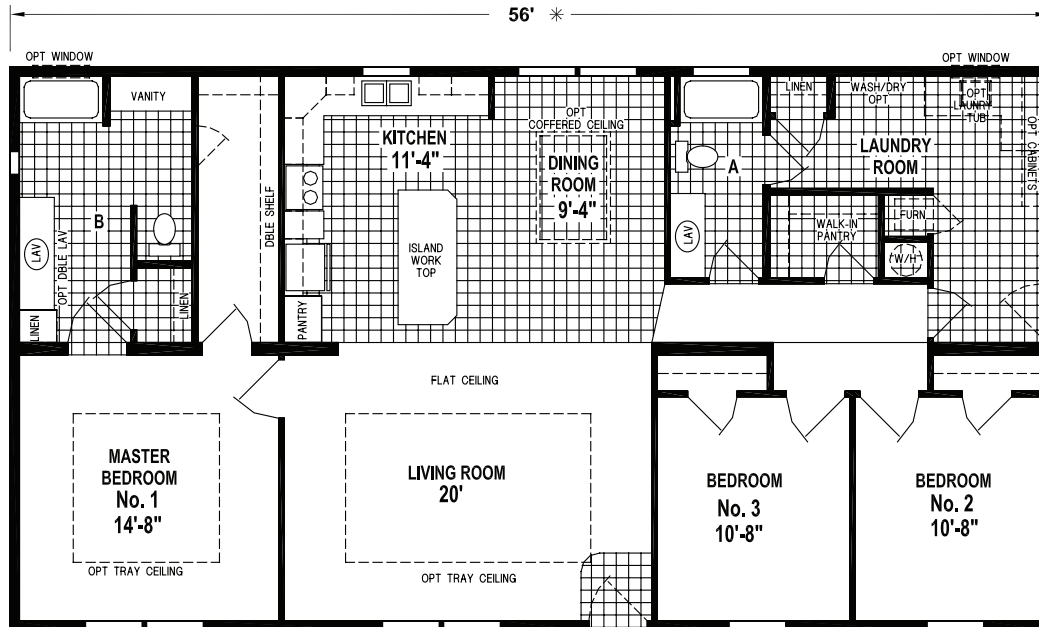
OPTION STAIRWELL



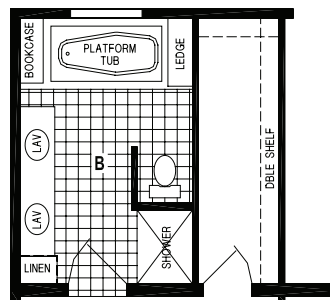
OPTION OPEN STAIRWELL

6837/5632

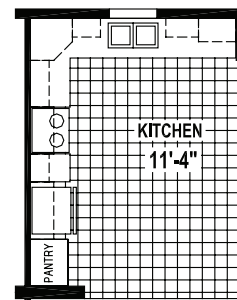
1,714 SQ. FT. - 3 BEDROOM - 2 BATHS



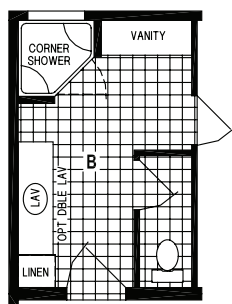
OPTION DELUXE BATH



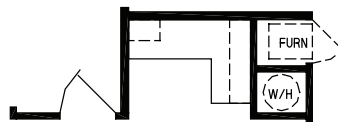
OPTION PLATFORM TUB BATH



ALTERNATE HIGH/LOW KITCHEN



OPTION CORNER SHOWER

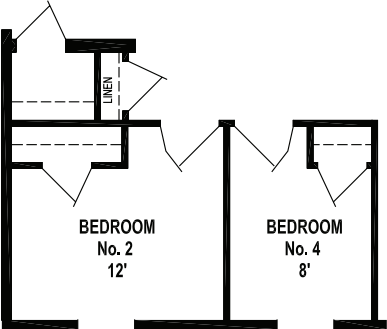
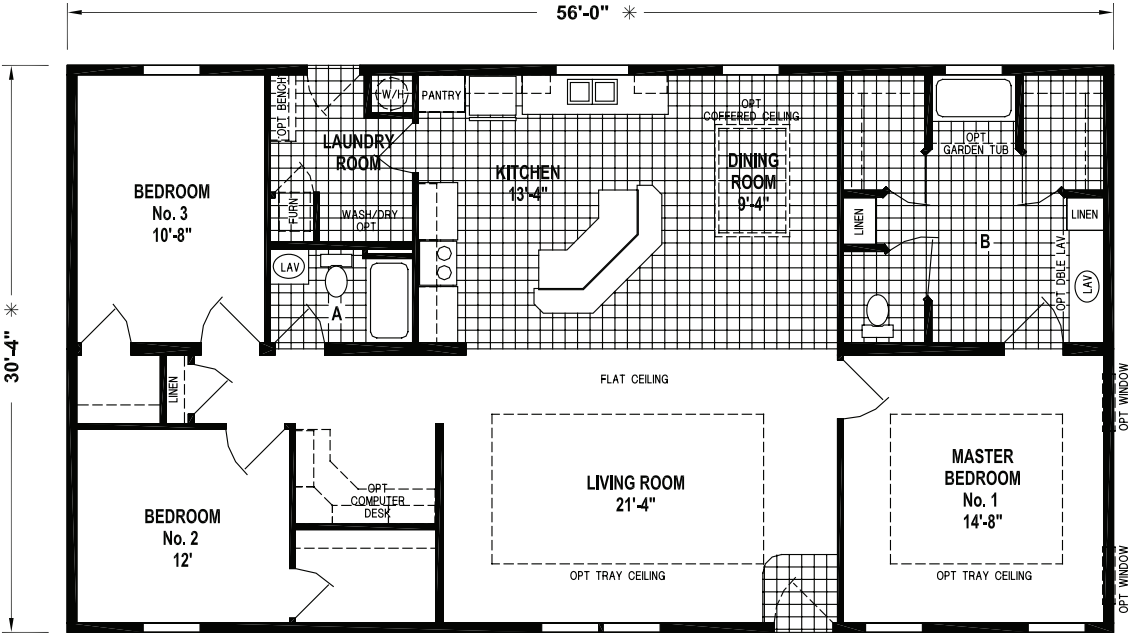


OPTION DESK

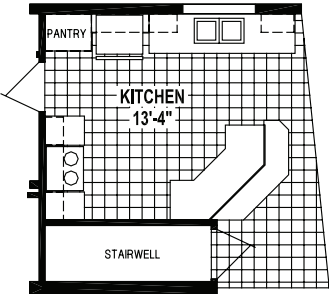
32' SERIES

6887/5632

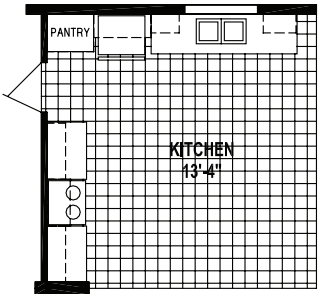
1,698 SQ. FT. - 3 BEDROOM - 2 BATHS



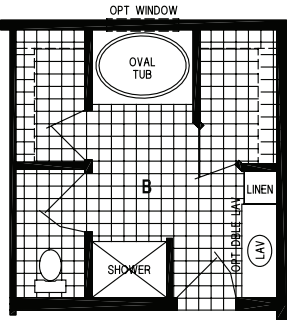
OPTION 4TH BEDROOM



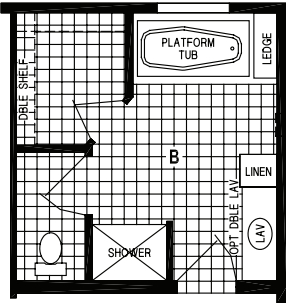
OPTION STAIRWELL



ALTERNATE HIGH/LOW KITCHEN



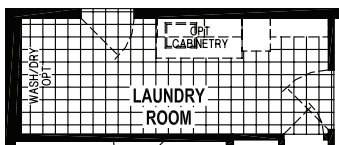
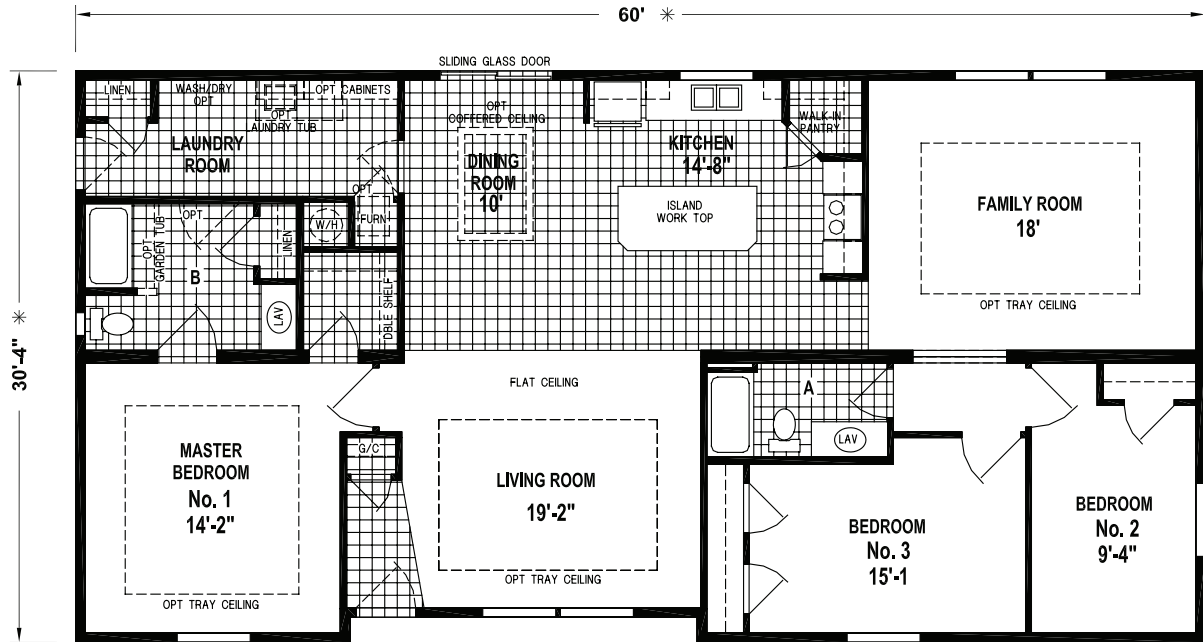
OPTION OVAL TUB BATH



OPTION PLATFORM TUB BATH

6808/6032

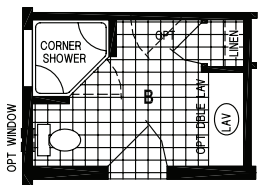
1,830 SQ. FT. - 3 BEDROOM - 2 BATHS



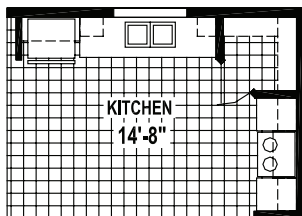
OPTION LAUNDRY ROOM



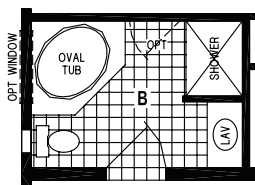
OPTION RECESSED ENTRY DELETE



OPTION CORNER SHOWER BATH



ALTERNATE HIGH/LOW KITCHEN



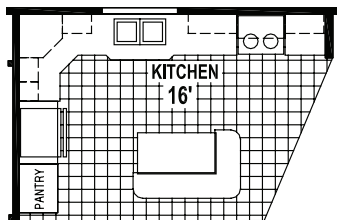
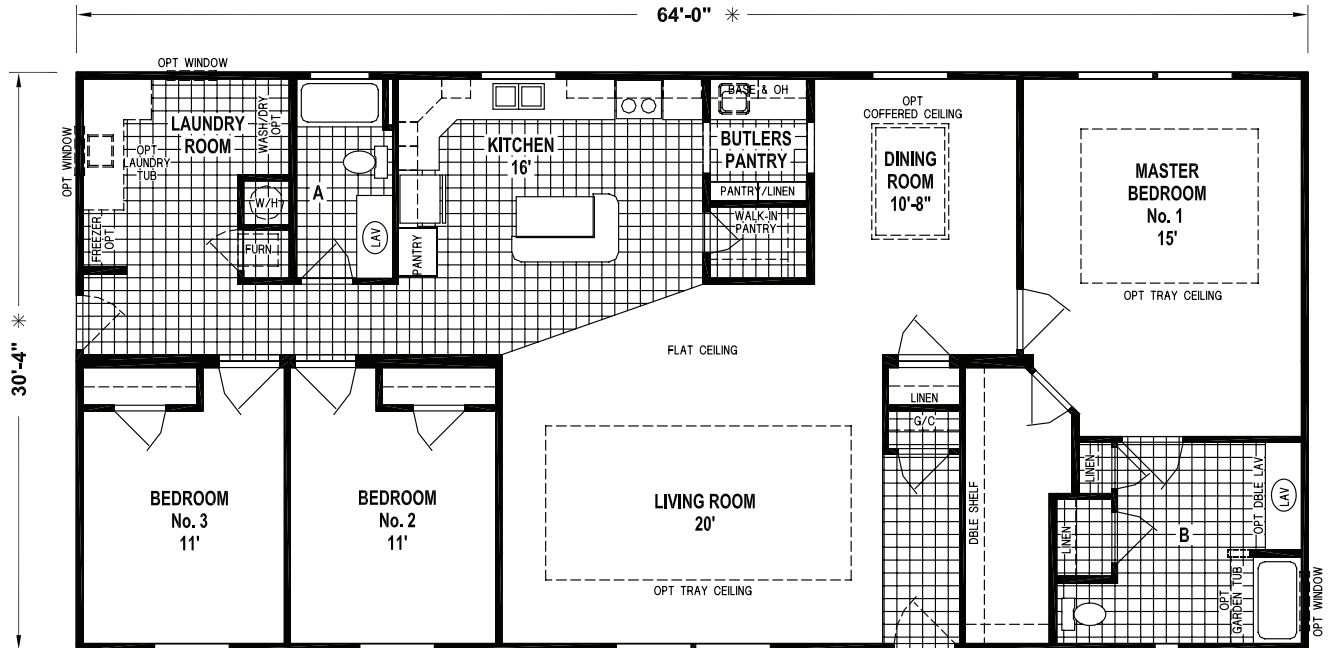
OPTION OVAL TUB BATH



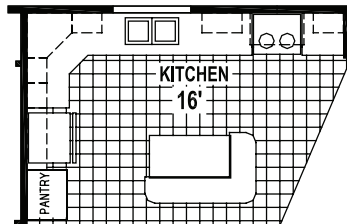
32' SERIES

6884/6432

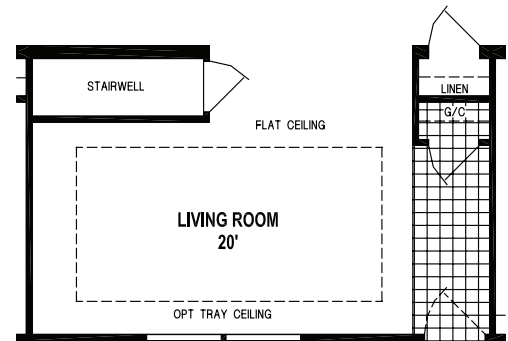
1,950 SQ. FT. - 3 BEDROOM - 2 BATHS



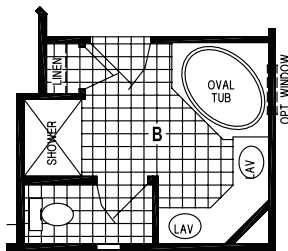
OPTION KITCHEN BUMP IN AND OUT



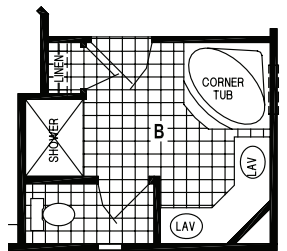
ALTERNATE RANGE HOOD KITCHEN



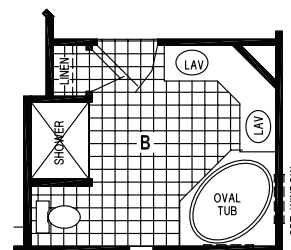
OPTION STAIRWELL



ALTERNATE OPTION OVAL TUB BATH



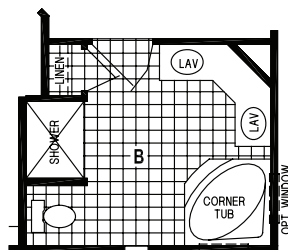
ALTERNATE OPTION CORNER TUB BATH



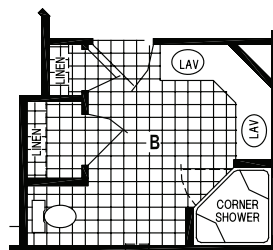
OPTION OVAL TUB BATH



OPTION FIREPLACE



OPTION DELUXE BATH



OPTION CORNER SHOWER BATH

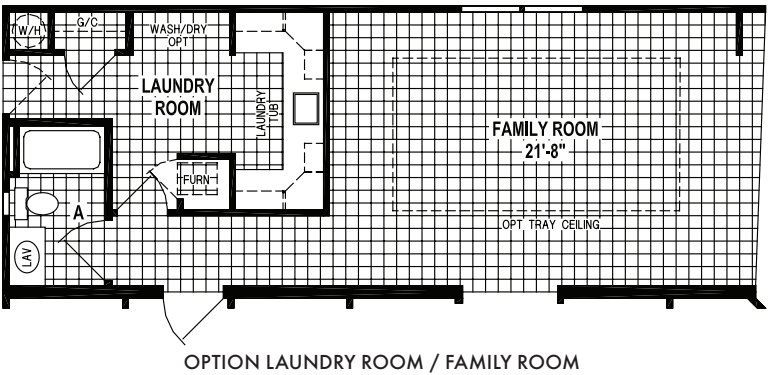
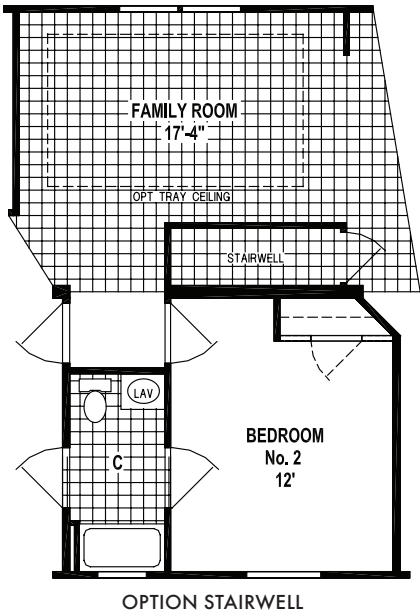
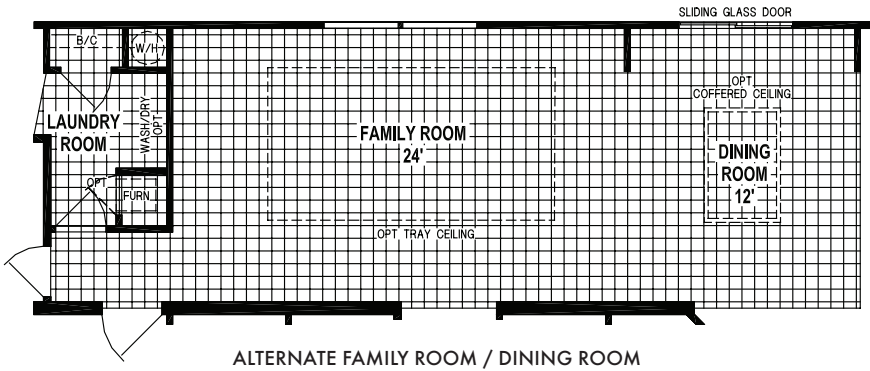
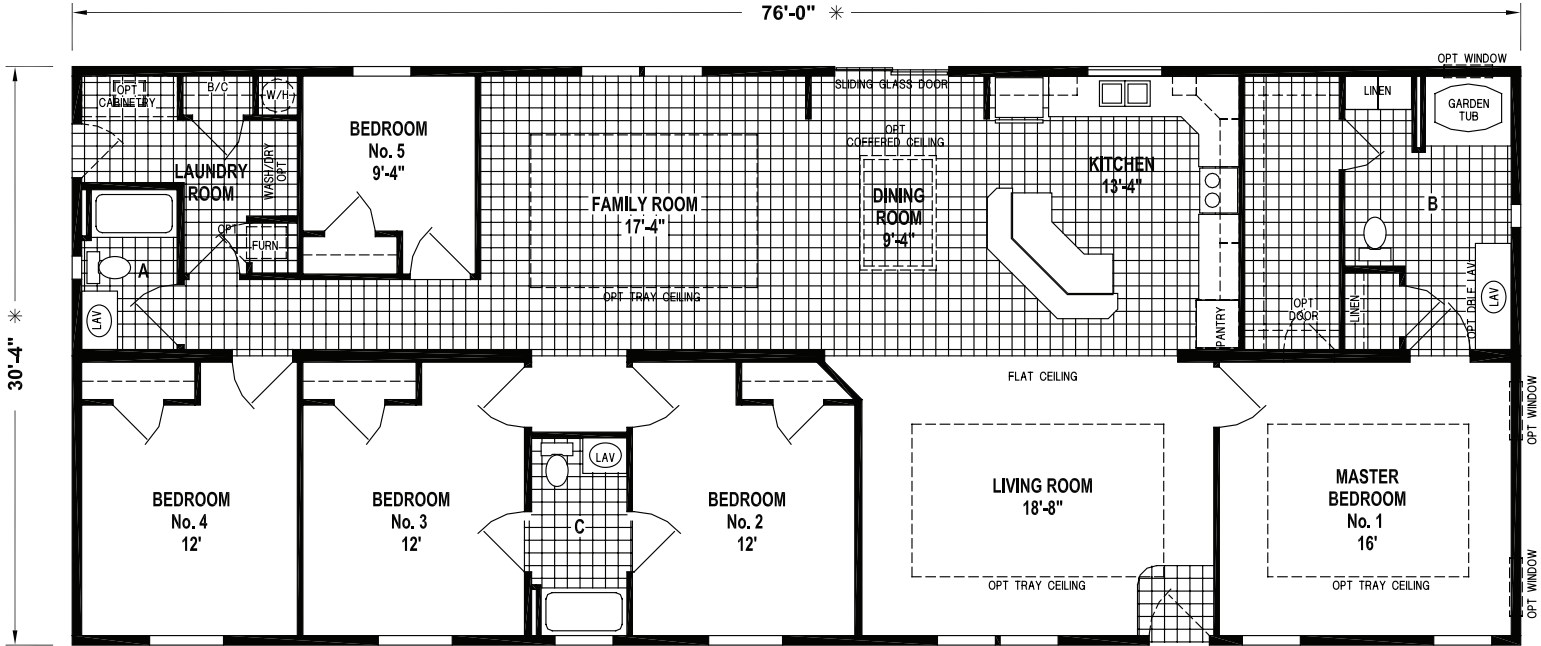


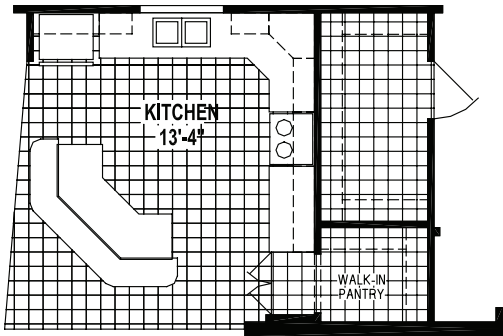
WED THU FRI SAT
UN JUL AUG SEP OCT NOV DEC
15 16 17 18 19 20 21 22 23 24 25 26 27 28 29 30 31

32' SERIES

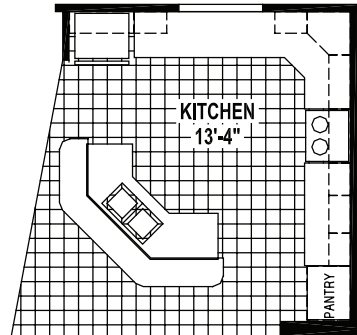
6806/7632

2,316 SQ. FT. - 5 BEDROOM - 3 BATHS

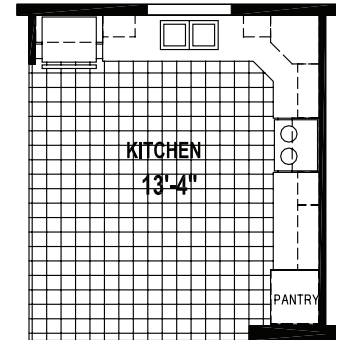




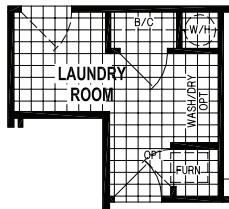
OPTION HIDDEN PANTRY



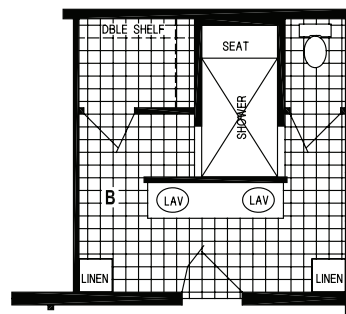
OPTION KITCHEN ISLAND



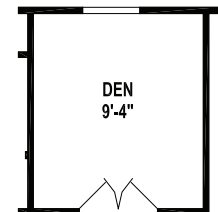
ALTERNATE HIGH/LOW KITCHEN



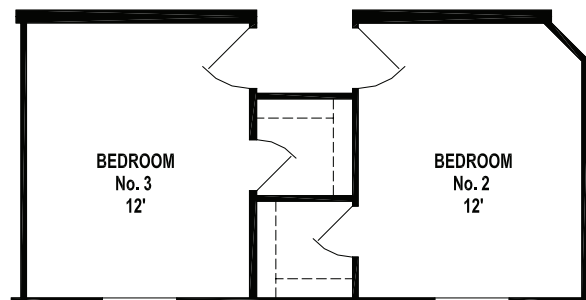
OPTION LAUNDRY ROOM



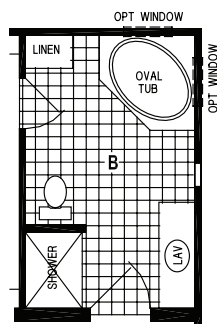
OPTION WALK-IN SHOWER BATH



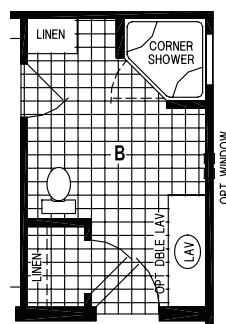
OPTION DEN



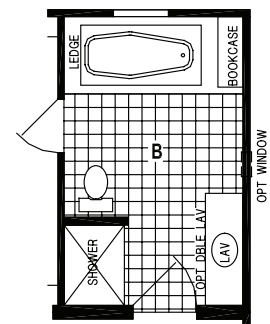
OPTION WALK-IN CLOSETS



OPTION OVAL TUB BATH



OPTION CORNER SHOWER BATH

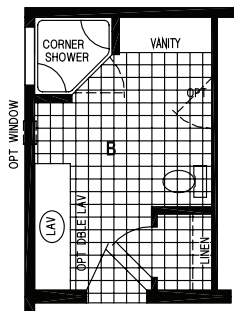
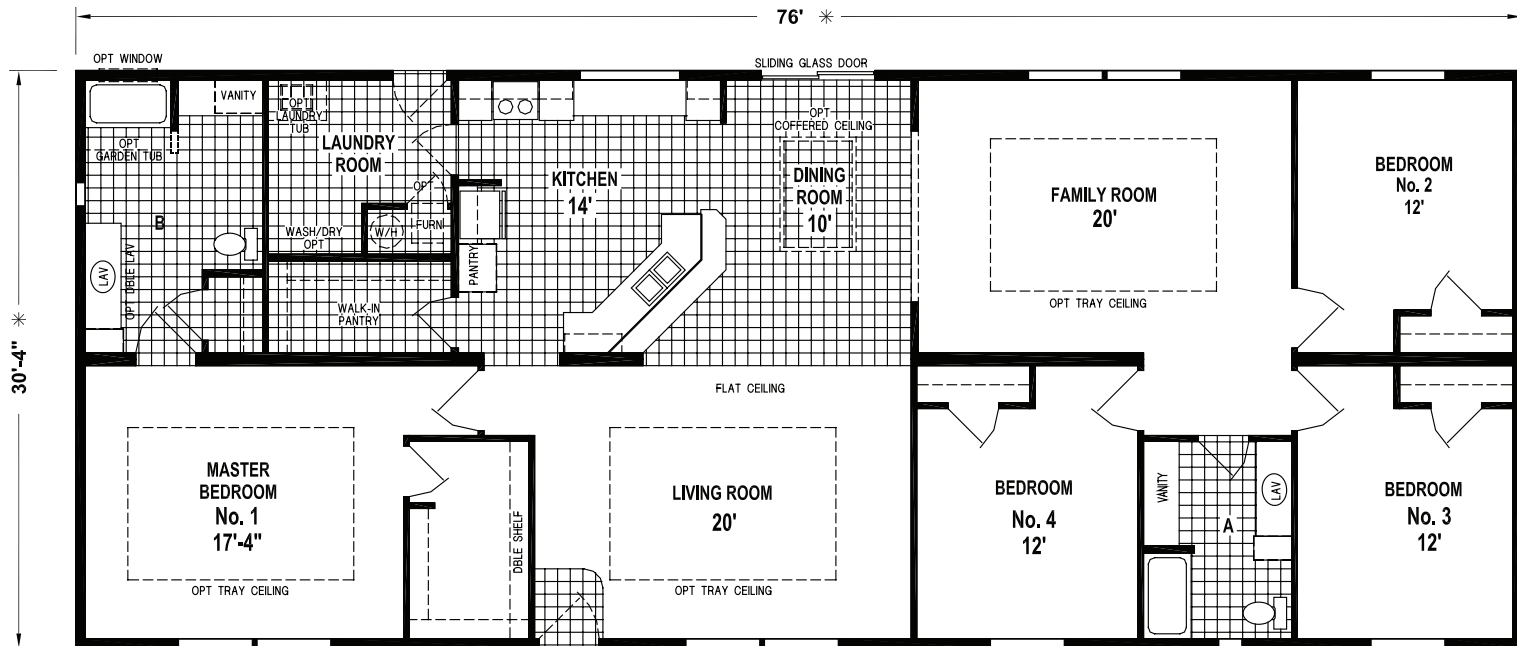


OPTION PLATFORM TUB BATH

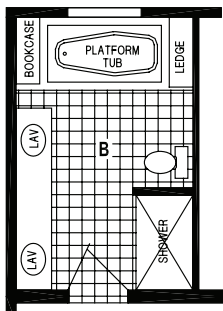
32' SERIES

6877/7632

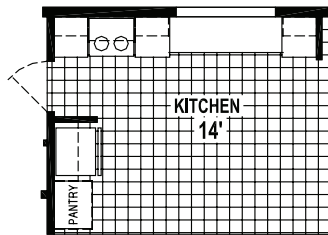
2,313 SQ. FT. - 4 BEDROOM - 2 BATHS



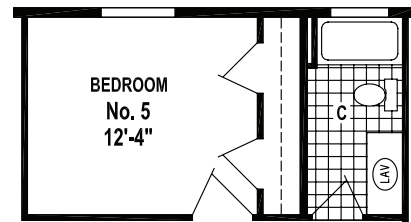
OPTION CORNER SHOWER BATH



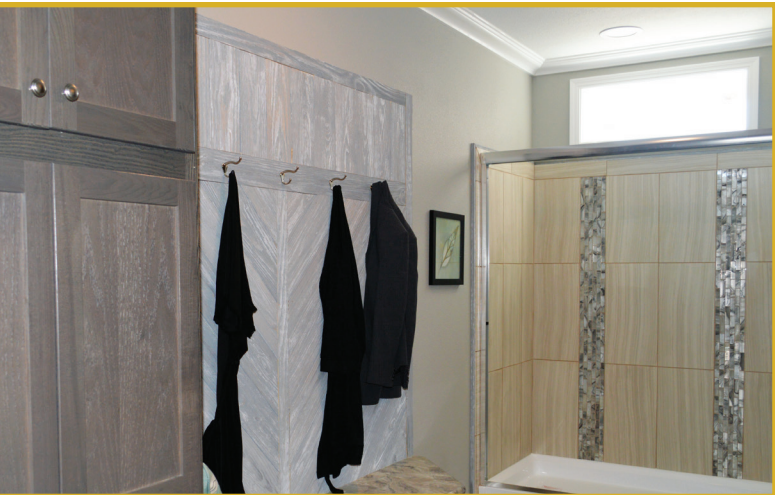
OPTION PLATFORM TUB BATH



ALTERNATE HIGH/LOW KITCHEN



OPTION 5TH BEDROOM AND THIRD BATH



Spring View

STANDARD FEATURES

LIVING AREAS

- Plush Carpet with Tack Strip and Carpet Bar
- Valance with Kerri Wood Blinds

KITCHEN

- Modular Cabinet Construction
- Wood Picture Frame Cabinet Doors
- Wood Cabinet Stiles
- Drawer Bank (per floor plan)
- Full Extension Drawer Guides
- Shelf in Base Cabinet
- 4" Countertop Backsplash
- Stainless Steel Sink with Single Lever Faucet and Sprayer
- 18 Cu. Ft. Double Door Frost-Free Refrigerator
- 30" Deluxe Electric Range with Lighted Hood
- Overhead Cabinet above Refrigerator

BATHROOM

- Wood Picture Frame Cabinet Doors
- Wood Cabinet Stiles
- Round China Commodes
- Fiberglass Tub and Shower
- Privacy Locks
- Cosmetic Lights
- Power Vent Fan with Light
- China Sinks with Overflow and Pop-Up Drain
- Decorative Mirror
- Paper Holder and Towel Bar

BEDROOM

- Plush Carpet with Tack Strip and Carpet Bar
- Valance with Kerri Wood Blinds
- Ventilated Wire Shelving
- Ceiling Light (2 Bulbs)

ADDITIONAL FEATURES

- Flat Ceiling Throughout
- 8' Sidewall
- Textured Ceiling with Stipple Finish

- 25-Year Roof Shingles
- Vinyl Lap Siding
- LP Smart Side Fascia
- Shutters at Front and Door Side
- Fiberglass Front Door with Sunburst Window (without Storm)
- Blank Fiberglass Rear Door
- Carriage Lights at all Exterior Doors
- Foam Core Sheathing at Sidewall
- 3/8" Sheathing at Endwalls
- Linoleum at Entry
- Carpet Pad Throughout
- Metal Lever Latch Door Handles
- White 6-Panel Interior Doors
- Pre-Finished Door Jambs
- 200 AMP Service Entrance
- Electric Furnace
- Perimeter Heat
- Paddle Fan in Living Room
- Chandelier in Dining Room
- PEX Water Lines
- 30 Gallon Electric Water Heater
- Ventilated Wire Shelving in Laundry Room
- Single Hung Vinyl Windows
- Egress Windows in Bedrooms
- 2 x 6 Floor Joists (24W and 28W)
- 2 x 8 Floor Joists (32W)
- Detachable Hitch
- Recessed Frames
- Copper Wiring
- Smoke Detector with Battery Backup and False Alarm Control
- Exterior Receptacle with GFI Breaker
- Electrical Breaker Box
- Thermal Zone II Insulation (R-11 Floor, R-19 Wall and R-30 Ceiling – *The Higher the "R-Value," the Greater the Insulating Power!*)

For your comfort and safety, Skyline home designs are approved and inspected for conformance to federal standards.

**Dimensions stated to industry standards. Width and length dimensions are nominal and are not to be used for setup of home on site; consult selling retailers for exact specifications. Overall length does not include approximately four foot hitch. The square footage is approximate and based upon nominal exterior floor size. Room sizes are measured from floor ends and wall centers.*

Because of progressive product improvement, all prices and specifications are subject to change without prior notice or obligation to Skyline Corporation.

Your retailer, an independent contractor, who is not an agent of Skyline Corporation, is the party responsible for your purchase contract and any additions, deletions, alterations, or attachments made to or in your home.

YOUR LOCAL SKYLINE RETAILER:



Seeger homes Inc
3800 N Nevada Ave
Colorado Springs, Co
80907

www.seegerhomes.com
719-632-9085



WWW.SKYLINEHOMES.COM