

GLASS PRODUCTS

PPG Certified Fabricator

- Solarban® 60, 72, 90, 70XL, z50, z75, R100, 67
- Oceans of Color™ Spectrally Selective Tints
- Graylite® II, Solargray®, Solarbronze®, Sungate® 400
- Starphire™ Low-Iron Glass
- Solarcool® & Vistacool™



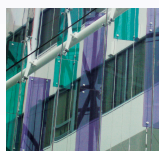
Pilkington

- Eclipse Advantage™ Reflective Low-E
- Blue-Green, Arctic Blue™, Clear, Grey, Bronze
- Energy Advantage™ Low-E
- Solar-E™



Fusion® Laminated Glass

- 1/4" – 1-9/16" Thickness
- Annealed or Heat-Treated
- PVB Interlayer
 - .030/.060/.090
- Kuraray SentryGlas®
 - .035/.060/.090
 - Exposed Edge



Guardian Select™ Fabricator

- SN 54, SN 68, SNX 51/23
- SNX 62/27
- AG 43, AG 50, SNR 43
- IS20
- Guardian SunGuard®
- Silver 20
- Neutral 40, 50, 78/65



Winduo® Insulating Units

- Black & Grey Silicone
- Triple Glazed Units
- Offset/Stepped Units
- Warm Edge Spacer – 3Seal
- Online Argon Fill



Heat Soak Testing

- 100% Heat Soak Testing
- EN14179-1:2005 – European Standard Compliant
- Max. Size – 84" x 158"

Temperperfect® Tempered Glass

- 5/32", 3/16", 1/4", 5/16", 3/8", 1/2", 5/8", 3/4" Tempered Glass
- Clear, Tint, Low-Iron, Acid Etched
- Coated - MSVD (soft-coat) & Pyrolytic

INVISIWALL® PRODUCTS

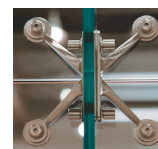
All Glass Doors & Entrances

- 3/8", 1/2", 5/8", 3/4" Tempered & Laminated
- Clear, Low-Iron, Acid Etched
- Swing, Stacking & Sliding Doors
- Patch Fittings, Fins & Spiders
- Rails – 1", 1-3/8", 3-3/8", 3-5/8", 4", 6", 8" (custom)
- Mag Locks, Push Pulls, Closers & Panic Devices
- Vertical Stiles & Specialty Hardware
- CAD Details & Shop Drawings
- Engineering & Project Management



Point-Supported Glass Systems

- Tempered, Laminated & IGU Applications
- Walls, Canopies, Handrails & Entrances
- Interior & Exterior
- Full Height, Cantilevered Fins & Subframes
- Complete Package (Glass, Hardware, Shop Drawings & Engineering)



Interior Office Fronts

- Dorma Interior Wall Systems – Sliding, Swing & Stacking
- Shop Drawings
- Project Management
- Logistics



Website: www.jeberkowitz.com

Phone: (800) 257-7827 One Gateway Boulevard, P.O. Box 427, Pedricktown, NJ 08067

Fax: (856) 299-4344

© J.E.Berkowitz, L.P. 2016

ISO 9001 Certified

JEB 11/16

JEBERKOWITZ

ARCHITECTURAL GLASS SINCE 1920

CAPABILITIES

3 Horizontal Tempering Ovens

- Double Chamber Convection Oven 96" x 168"
- Double Chamber Convection Oven 96" x 144"
- Convection Oven – 84" x 180"

Heat Soaking Chamber

- Max. Size – 84" x 158"

Roller Coater Spandrel Line

- Max. Size – 84" x 130"
- Ceramic Frit

Silk-Screening Processing Line

- Max. Size – 84" x 160"

Architectural Glass Laminating Line

- Max. Size – 96" x 180"

4 Architectural Insulating Unit Lines

- Max. Size – 98" x 197"
- On-Line Argon Gas Filling
- Standard Spacers (Aluminum, Stainless Steel & 3SEAL)
- Specialty Spacers – Shūco
- Grey or Black Sealants

2 Automated Cutting Lines

- Max. Size – 130" x 204"

CNC Glass Fabrication

- Holes, Countersinks, Notches & Patterns

Horizontal Double Edger (X&Y Axis)

- Max. Size – 181" x 78"

2 Vertical Polishing Machines

* Consult JEB for applicable maximum glass thickness and sizes.

Technical Support

- Glass Performance Data - LBNL Windows 6.3
- Thermal Stress Analysis
- Blast Calculations - WINGARD Program
- Glass Deflection - Window Glass Design 5
- Submittal Samples
- Architectural Binders
- EZ Specification Change Program
- Architectural Presentations
- LEED® Documentation & Sustainable Project Assistance

CONTACTS

Glass Products	(800) 257-7827	Fax: (856) 299-4344
Estimating	Brian Larson – Ext. 225 John Mathews – Ext. 203 Chris Frye – Ext. 221	blarson@jeberkowitz.com jmathews@jeberkowitz.com cfrye@jeberkowitz.com
Technical/LEED® Support	Suzanne Renzi – Ext. 204 Brian Larson – Ext. 225	srenzi@jeberkowitz.com blarson@jeberkowitz.com
Specification/Architectural Support	Gary McQueen – (410) 441-4114 Brian Larson – Ext. 225 John Mathews – Ext. 203	gmcqueen@jeberkowitz.com blarson@jeberkowitz.com jmathews@jeberkowitz.com

Invisiwall® Products	(800) 257-7827	Fax: (856) 299-3666
New Jersey Office Point Supported Glass Systems Point Supported Glass Systems Point Supported Glass Systems Office Fronts/All Glass Doors	Bob Yemola – Ext. 283 Emily Wolanski-Moran – Ext. 281 Danyelle Marts – Ext. 222 Stephen Ziegler – Ext. 284	byemola@jeberkowitz.com ewolanski@jeberkowitz.com dmarts@jeberkowitz.com sziegler@jeberkowitz.com
Virginia Office Office Fronts/All Glass Doors	Phone: (866) 532-4527 Annette Niten	Fax: (276) 638-3669 aniten@jeberkowitz.com



Website: www.jeberkowitz.com



Phone: (800) 257-7827 One Gateway Boulevard, P.O. Box 427, Pedricktown, NJ 08067

Fax: (856) 299-4344