

About Bucket Liners

Polyethylene plastic liners insert into Aerial Tower buckets providing greater electrical insulation for the worker and improved bucket protection.

New bucket liners must be tested and certified at 50 or 70 kV AC in accordance with ANSI standard A92.2.

ANSI standard A92.2 calls for liners to be periodically (normally, annually) retested.

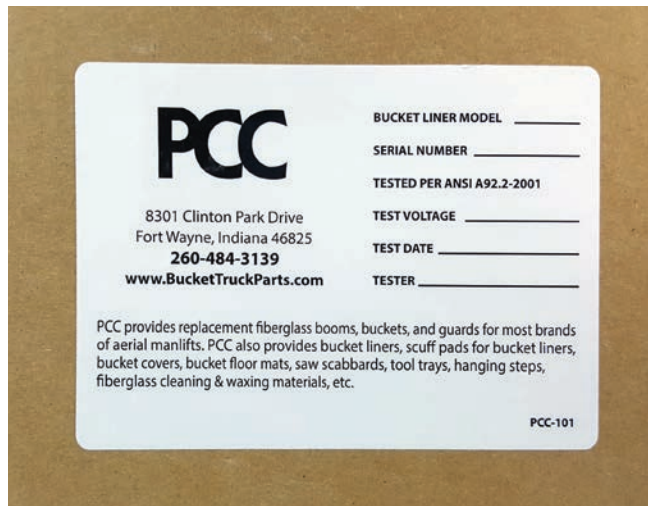
All liners are NOT equal. PCC liners last longer and weigh less.

Why? PCC uses a superior plastic grade not found in any competitors' liner.

- Tested and Certified at 50 or 70 kV AC
- Meets ANSI 92.2 specification for electrical protection



30502129: 24" x 24" x 42"



30502212: 24" x 48" x 42"

Bucket Liners

PCC Part #	Dimensions	Description
30502129	24" x 24" x 42"	50kV
30502207	24" x 24" x 39"	50kV
30502212	24" x 48" x 42"	50kV
30502213	24" x 30" x 41"	50kV
3050A-40	24" x 24" x 40"	LRV & Terex Telelect - 50kV

70k liners are available on special order ask your salesperson for pricing.

When getting price quotes ask about non-slip floor.

CALL TO ORDER 260-484-3139

Special Order Liners

<i>PCC Part #</i>	<i>Dimensions</i>	<i>Description</i>
30502224	24" x 24" x 41"	Hi-Ranger 4F - 50kV
30502211		Hi-Ranger 6TD, U-style - 50kV
3050A-03	24" x 24" x 39"	A-03 for AL of CT - 50kV
3050AT30	23-1/2" x 29-1/2" x 39"	Asplundh - 50kV
3050BU59	24" x 24" x 39"	Holan, Narrow bottom - 50kV
3050R38	22" x 36" x 41"	Hi-Ranger, 4F - 50kV
3050TM24	24" x 40" x 41"	Versalift - 50 kV
30502310		Teco U-style, old style, 13" walk-thru - 50kV
30502312		Teco U-style, stretch, 18" walk-thru - 50kV
30502314		TECO U-vstyle rectangular - 50kV



30502213: 24" x 30" x 42"



30502314: U-style



30502314: U-style reverse side

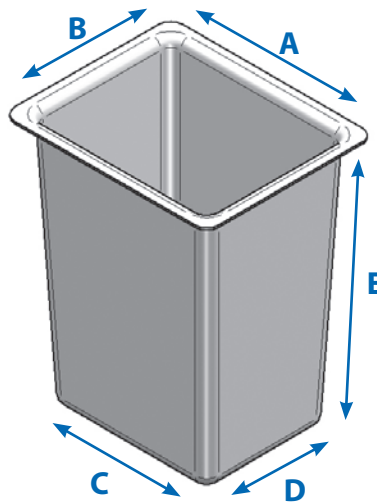
CALL TO ORDER 260-484-3139

Unsure which liner will properly fit your bucket?

Using the worksheet below, give us the measurements of your bucket or liner.
We will tell you which liner will work for you.

1. LINER MEASUREMENTS:

- | | |
|----------|---|
| A. _____ | Exterior length at top of liner, approx. 1 to 2 inches down from top of lip. |
| B. _____ | Exterior width at top of liner, approx. 1 to 2 inches down from top of lip. |
| C. _____ | Exterior length at bottom of liner, approx. 2 to 3 inches up from liner bottom. |
| D. _____ | Exterior width at bottom of liner, approx. 2 to 3 inches up from liner bottom. |
| E. _____ | Exterior height (bottom of liner to bottom of liner lip). |



2. I DON'T HAVE A LINER

If you do not currently have a liner and would like to add one, the outer dimensions of the liner correspond to the inner dimensions of your bucket. Follow the steps above and fill in the blanks using measurements from the bucket INTERIOR in place of the liner exterior measurements.

3. NON-SLIP SURFACE:

Would you like to add a non-slip surface to the inside floor of your new liner?
YES or **NO** (circle one)

CALL TO ORDER 260-484-3139

About Scuff Pads

Scuff pads are fiberglass products which fit in the bottom of the bucket liners to protect them. Some are available with a step to ease access.

Scuff Pads

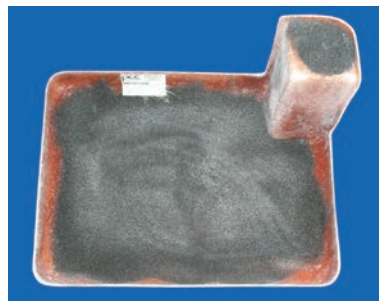
<i>PCC Part #</i>	<i>Dimensions</i>	<i>Description</i>
30512129	24" x 24"	for 2129 Liner, O/S 20-1/2" x 20-1/2"
30512207	24" x 24"	for 2207 Liner, O/S 21-1/4" x 21"
30512212	24" x 48"	for 2212 Liner, O/S 44" x 19"
30512213	24" x 30"	for 2213 Liner, O/S 25-1/8" x 19"
30522129	24" x 24"	with step for 2129 Liner, O/S 20-1/2" x 20-1/8"
30522207	24" x 24"	with step for 2207 Liner
30522212	24" x 48"	with step for 2212 Liner, O/S 43-1/2" x 18-5/8"
30522213	24" x 30"	with step for 2213 Liner, O/S 25" x 18-5/8"



30512129



30512212






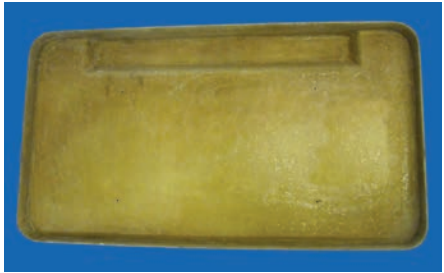
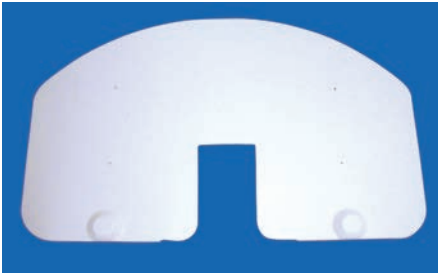
30522213



30522212

CALL TO ORDER 260-484-3139

Bucket Covers: Fiberglass

<i>PCC Part #</i>	<i>Description</i>
50520200	24" x 24" Cover (Straps go under bucket) 31" x 28-7/8" I/S
	<div style="display: flex; justify-content: space-around;"> <div style="text-align: center;">  <p>top</p> </div> <div style="text-align: center;">  <p>inside</p> </div> </div>
50520400	24" x 30" Cover (Straps go under bucket) 34-5/8" x 28-7/8" I/S & fits all PCC 24" X 30"
	<div style="display: flex; justify-content: space-around;"> <div style="text-align: center;">  <p>top</p> </div> <div style="text-align: center;">  <p>inside</p> </div> </div>
50520605	24" x 48" Cover (Straps go under bucket) To Fit PCC ALTEC Ribbed Basket produced 2003 to 2006 52-1/2" x 30-5/8"
	<div style="display: flex; justify-content: space-around;"> <div style="text-align: center;">  <p>top</p> </div> <div style="text-align: center;">  <p>inside</p> </div> </div>
50520700	HR (U-Style Curved)
50520800	TECO - Curved (U-Style)
	 <p>top</p>
50520900	TECO - Rectangular (U-Style)

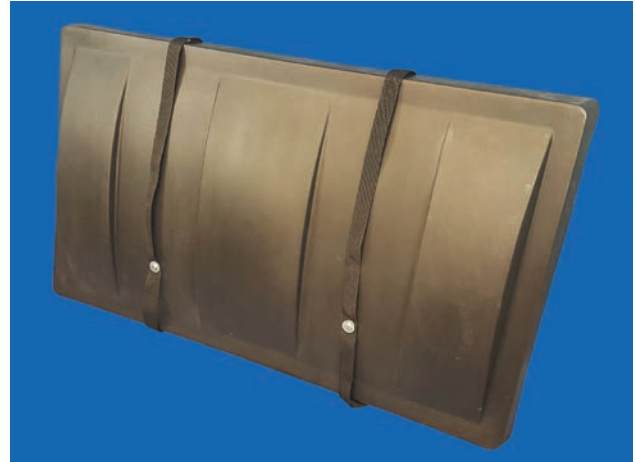
CALL TO ORDER 260-484-3139

PCC Bucket Covers: Plastic

<i>PCC Part #</i>	<i>Description</i>
50522600	Polyethylene Plastic Cover (opaque) fits 24" x 48" bucket with straps 51-1/2" x 29-1/4" x 3"
50522650	Polyethylene Plastic Cover (black) fits 24" x 48" bucket with straps 51-1/2" x 29-1/4" x 3"



50522600



50522650

Special Order Bucket Covers: Plastic

<i>PCC Part #</i>	<i>Description</i>
50525F30	Polyethylene Plastic Cover fits 24" x 30" non-ribbed bucket
50528L32	Polyethylene Plastic Cover fits 24" x 24" ribbed bucket
5052L28N	Polyethylene Plastic Cover fits 24" x 24" bucket
50530L34	Polyethylene Plastic Cover fits 24" x 30" ribbed bucket

Universal Strap Set

<i>PCC Part #</i>	<i>Description</i>
50522610	Universal Replacement StrapSet for Bucket Cover



50522610

CALL TO ORDER 260-484-3139

Bucket Covers: Heavy Duty 22oz American material

<i>PCC Part #</i>	<i>Dimensions/Model</i>	<i>Description</i>
50530103	24" x 24"	Black Vinyl (with pocket for 1" x 4" wood slat top support)
50530153	28" x 31"	Black Vinyl (with pocket for 1" x 4" wood slat top support)
50530203	24" x 30"	Black Vinyl (with pocket for 1" x 4" wood slat top support)
50530253	30" x 30"	Black Vinyl (with pocket for 1" x 4" wood slat top support)
50530303	24" x 48"	Black Vinyl (with pocket for 1" x 4" wood slat top support)
50530453	24" x 24" AL of CT	Black Vinyl (with pocket for 1" x 4" wood slat top support)

Other covers are available. Ask your sales person when calling



Black Vinyl Cover



24" x 24" Black Vinyl Cover

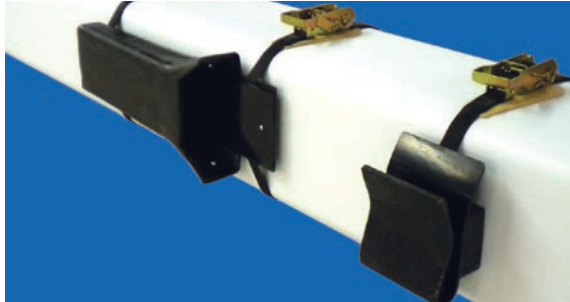
Special Order Bucket Covers: Heavy Duty 22oz American material

<i>PCC Part #</i>	<i>Dimensions/Model</i>	<i>Description</i>
50530603	Asplundh	Vinyl to include control guard, 1936A
50530703	Teco Rectangular	Black Vinyl
50530704	Teco HR 6TD	Black Vinyl Stretch
50530705	D shape buckets	Black Vinyl

CALL TO ORDER 260-484-3139

Pole Saw Holders - Boom Mounted

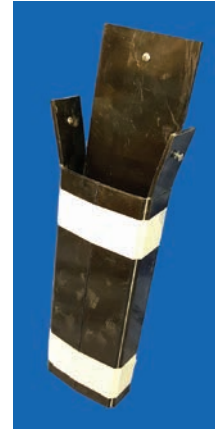
<i>PCC Part #</i>	<i>Description</i>
50550422	Chain saw holder - Lined
50550424	Handle holder for hydraulic (including ADI) and manual saws
50550426	Handle holder for gasoline saw
50550730	Straps for Pole Saw Holders
50550440	Set: Scabbard 50550422 & Handle Holder 50550424
50550423	Scabbard Insert - black pole saw scabbard abrasion resistant plastic



50550440: chain saw holder with handle holder



50550426: gasoline saw holder



50550423

Chain Saw Holders - Bucket Mounted

<i>PCC Part #</i>	<i>Description</i>
50550400	Polyethylene plastic mount - Inside mount
50550401	Polyethylene plastic mount - Inside mount - Abrasion-resistant black plastic lining
50550410	Heat-resistant fiberglass - Inside or outside mount
50550411	Heat-resistant fiberglass - Inside or outside mount - Abrasion-resistant black plastic lining
50550418	Scabbard insert - Abrasion-resistant black plastic lining



50550400



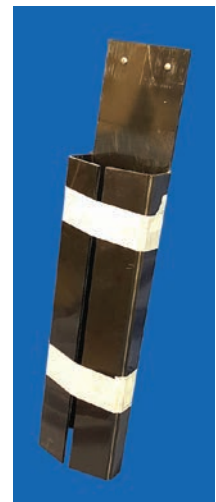
50550401



50550410



50550411



50550418

CALL TO ORDER 260-484-3139

Tool Trays

<i>PCC Part #</i>	<i>Lip</i>	<i>Dimensions</i>	<i>Mount</i>
50562010	2-3/4" Lip	8" x 13" x 7" deep	Inside mount
50562011	2-3/4" Lip	8" x 13" x 7" deep	Outside mount
50562017	4" Lip	8" x 19" x 7" deep	Inside mount
50562018	4" Lip	8" x 19" x 7" deep	Outside mount
50562037	Polyethylene	8" x 18" x 8" deep	Outside mount - twin mounting lips, nylon bolts



50562011



50562018

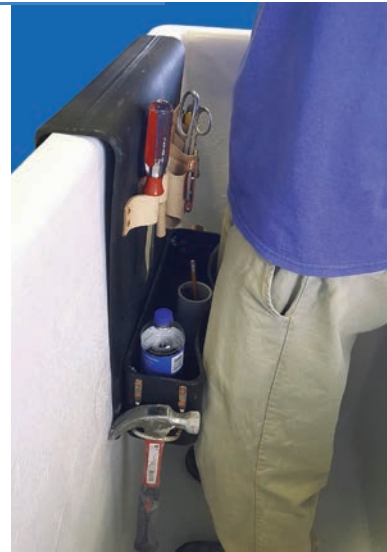


50562037

CALL TO ORDER 260-484-3139

PCC's Patented Thigh Brace/Tool Tray

- Provides the same benefit as toe-space buckets
- Backboard top can be used as a tool board or whatever you design
- Is universal — hangs from the lip of any bucket or bucket with liner
- Virtually eliminates back strain resulting from hours of bucket work
- Doubles as a tool tray
- Is adjustable in height
- Provides comfortable leg support



50572405 in use

Hanging Thigh Brace/Tool Tray

<i>PCC Part #</i>	<i>Description</i>
50572400	Polyethylene - Apron on top
50572401	Polyethylene - Blank on top
50572405	Polyethylene - Tool pouch top



50572405 :
Tool pouch top



50572401:
Blank on top



50572400:
Apron on Top



50550439:
Impact Wrench Holster

Tool Holders

<i>PCC Part #</i>	<i>Description</i>
50550439	Impact Wrench Holster

CALL TO ORDER 260-484-3139

Bucket Floor Mat - For Relief of Fatigue

- The PVC material is tested to be dielectrically non-conductive and will not sustain combustion. It is highly resistant to mold, heat and cold.
- Two-thirds of the surface is air, making it the most comfortable mat available. Research and testing show that approximately 2 hours and 13 minutes of stress and fatigue are eliminated for a worker in an eight hour day using the mat's patented "Loc-Woven" design.
- This mat has a dual tread design. Each tread has 4 safety ribs to prevent slippage and skids. The mat is reversible with safety ribs on both sides.
- The 1/2" thick mat keeps feet dry and above normal rain water. It also provides insulation to the feet in cold weather.
- The PVC material is easy to clean. Most dirt stays on the floor.
- Available for any size bucket or in a roll for your entire fleet.



Material - Polyvinyl Chloride (PVC)
 Width of treads - 1/4"
 Thickness - 1/2"
 Weight - about 1 pound per sq/ft

Anti-Fatigue Black Floor Mats

<i>PCC Part #</i>	<i>Dimensions - Description</i>
50580111	24" x 24"
50580112	24" x 30"
50580113	24" x 48"
50580114	Priced by the sq. foot - Any size
50580116	2 feet wide by 50 feet long - Roll

Angle Bracket

<i>PCC Part #</i>	<i>Description</i>
50510100	(1-1/2" x 1-1/2" x 1/4") by 4' long



50510100

CALL TO ORDER 260-484-3139

Steps

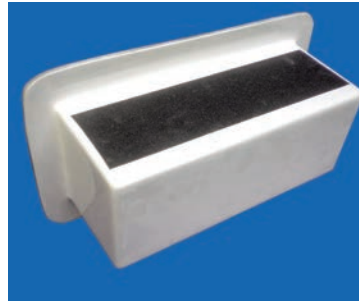
<i>PCC Part #</i>	<i>Dimensions</i>	<i>Description</i>
50540100	4" x 14"	Outside Step
50540300	4" x 14"	Inside/Outside Step
50540410	6" x 15"	Inside/Outside Step
50544500		Hanging Step



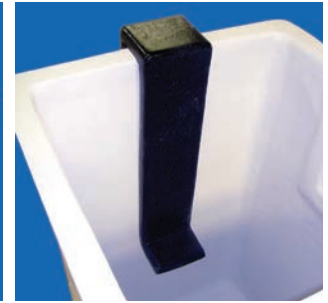
50540100



50540300



50540410



50544500

PCC's Bucket Work Shelf

- Non-skid white top surface, replaceable
- 3 vertical edge lips to prevent items from rolling off
- Use as a laptop computer platform, assembly table or wiring work surface
- Lifting components
- Will support a 50 # load



Bucket Work Shelf

<i>PCC Part #</i>	<i>Description</i>
50560020	Inside top dimensions 17-5/8" wide x 16" deep

CALL TO ORDER 260-484-3139