

C110-100 Chopped Cookie No TFA No Artificial Flavors



Issue Date:	5/26/2020	Revision:	B
-------------	-----------	-----------	---

PRODUCT DESCRIPTION

Chopped Cookies 'N Cream - No TFA No Artificial Flavors

PHYSICAL ATTRIBUTES								
Appearance:	Varying sized pieces of cookies n' cream							
Color:	Dark brown							
Flavor:	Dark chocolate							
Pack size:	4 x 2.5 lbs							
Case Dimensions:								
L[depth]xWxH in.	14.1	12.1	5.9	Case Cube(ft ³):	0.5825	Pallet Conf. (TI / HI)	9	13

INGREDIENTS	
SUGAR, ENRICHED WHEAT FLOUR (WHEAT FLOUR, NIACIN, REDUCED IRON, THIAMIN MONONITRATE (VITAMIN B1), RIBOFLAVIN (VITAMIN B2), FOLIC ACID), PALM OIL, SOYBEAN OIL, COCOA (PROCESSED WITH ALKALI), INVERT SUGAR, CONTAINS 2% OR LESS OF THE FOLLOWING: CORN FLOUR, CHOCOLATE LIQUOR, CORN STARCH, SALT, BAKING SODA, WHEY, NATURAL FLAVOR, AND SOY LECITHIN.	
ALLERGENS:	CONTAINS: WHEAT, SOY AND MILK. MAY ALSO CONTAIN TRACES OF: PEANUTS, TREE NUTS AND EGG.

NUTRITIONAL INFORMATION	
NUTRIENT	Per 100g
CALORIES	464.50
TOTAL FAT (g)	18.46
SATURATED FAT (g)	6.68
TRANS FAT (g)	0.18
CHOLESTEROL (mg)	0.06
SODIUM (mg)	428.58
TOTAL CARBOHYDRATE (g)	72.78
DIETARY FIBER (g)	2.47
TOTAL SUGARS (g)	37.37
ADDED SUGARS (g)	36.82
PROTEIN (g)	4.69
VITAMIN D (mcg)	0.0
CALCIUM (mg)	16.21
IRON (mg)	4.73
POTASSIUM (mg)	135.40

Nutrition Facts
 About 324 servings per container
Serving size 2 Tbsp (14g)

Amount per serving
Calories 70

	% Daily Value*
Total Fat 2.5g	3%
Saturated Fat 1g	5%
Trans Fat 0g	
Cholesterol 0mg	0%
Sodium 60mg	3%
Total Carbohydrate 10g	4%
Dietary Fiber 0g	0%
Total Sugars 5g	
Includes 5g Added Sugars	10%
Protein 1g	
Vitamin D 0mcg	0%
Calcium 2mg	0%
Iron 1mg	6%
Potassium 19mg	0%

*The % Daily Value tells you how much a nutrient in a serving of food contributes to a daily diet. 2,000 calories a day is used for general nutrition advice.

Brand Name:	TR Toppers	Net Weight: (Lbs.)	10
Country of Origin	USA	Net Weight: (Kg.)	4.54
Case GTIN	00651844106931	Gross Weight: (Lbs.)	11
Kosher	Star-D	Gross Weight: (Kg.)	4.99
Metal Detection	1.5mm Ferrous	1.8mm Non-Ferrous	2.0mm SS316

MICROBIOLOGICAL ATTRIBUTES*	
Attributes	Limits
Total Aerobic Plate Count (cfu/g)	<5,000
Coliforms (cfu/g)	<10
Yeast and Mold (cfu/g)	<100
E. coli (cfu/g)	<3
Salmonella (/375g)	Negative
Listeria Genus (/25g)	Negative

*The above attributes are provided by the product manufacturer. Parameters are guaranteed attributes. It is not indicative of product testing.

GENETIC ENGINEERING STATEMENT	
	Completely Produced with Genetic Engineering.
X	Partially Produced with Genetic Engineering.
	May be produced with Genetic Engineering.
	NOT Produced with Genetic Engineering.

STORAGE CONDITIONS

Recommended Condition: Store between 60°F-75°F.

SHIPPING CONDITIONS

Recommended Condition: Best shipped <75°F.

Alternate Condition: May be shipped in freezer or refer truck at 0°F for less than 7 days.

SHELF LIFE

Recommended Shelf Life: 365 Days.

ALLERGEN / SENSATIZER TABLE

COMPONENT	PRESENT IN PRODUCT	PRESENT IN PRODUCTS MANUFACTURED ON THE SAME LINE	PRESENT IN THE SAME MANUFACTURING PLANT
PEANUTS AND DERIVATIVES	MAY CONTAIN	YES	YES
TREE NUTS AND DERIVATIVES	MAY CONTAIN	YES	YES
EGG AND DERIVATIVES	MAY CONTAIN	YES	YES
MILK AND DERIVATIVES	YES	YES	YES
SOY AND DERIVATIVES	YES	YES	YES
WHEAT	YES	YES	YES
FISH	NO	NO	NO
CRUSTACEAN SHELLFISH	NO	NO	NO
SULFITES > 10 ppm	NO	NO	YES
MUSTARD	NO	NO	NO
SESAME	NO	NO	NO
GLUTEN	YES	CONTAINS: WHEAT	
FD&C ARTIFICIAL COLOR	NO		

CODE FORMAT

Case Code-Left Side: Julian Date, Time, C110-100

Case Code-Right Side: Julian Date, Time, C110-100

Pallet Markings: Julian Date, Pallet #, C110-100

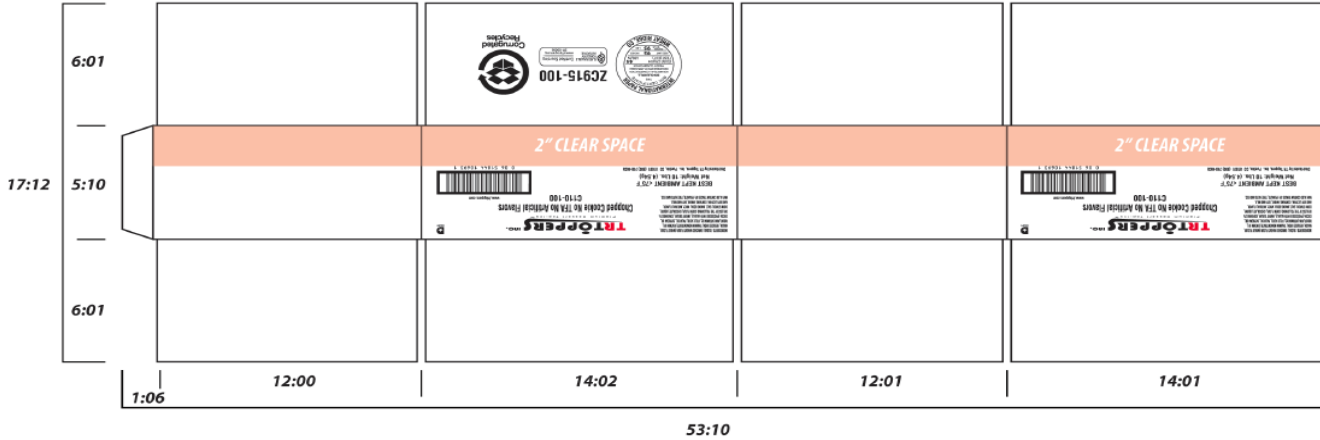
EXAMPLE: 25811 15:32 C110-100

JJJ = Production Julian Date 258 = September 15; Y = Last Digit of Year 1 = 2011; L = Line (Numeric) 1 = Line 1; Time: HH:MM 15:32 = 3:32 p.m.

Product Code = (e.g. C110-100)

LABEL / CASE GRAPHICS

Lead Edge



INGREDIENTS: SUGAR, ENRICHED WHEAT FLOUR (WHEAT FLOUR, NIACIN, REDUCED IRON, THIAMIN MONONITRATE (VITAMIN B1), RIBOFLAVIN (VITAMIN B2), FOLIC ACID), PALM OIL, SOYBEAN OIL, COCOA (PROCESSED WITH ALKALI), INVERT SUGAR, CONTAINS 2% OR LESS OF THE FOLLOWING: CORN FLOUR, CHOCOLATE LIQUOR, CORN STARCH, SALT, BAKING SODA, WHEY, NATURAL FLAVOR, AND SOY LECITHIN. CONTAINS: WHEAT, SOY AND MILK. MAY ALSO CONTAIN TRACES OF: PEANUTS, TREE NUTS AND EGG.



Chopped Cookie No TFA No Artificial Flavors
C110-100

www.trtoppers.com

BEST KEPT AMBIENT <75°F
Net Weight: 10 Lbs. (4.54g)

Distributed by TR Toppers, Inc. Pueblo, CO 81001 (800) 748-4635



ZC915-100

