



EIW STEEL TRUSS SYSTEM

Products and Services

Access Scaffolding Systems

- TSS Total Scaffold System (Steel/Aluminum)
- TSF Total System Frame (Aluminum)
- Traditional Frame Scaffolding

Shoring Systems

- Truss Shoring System (Steel/Aluminum)
- QSS Quick Strip System (Aluminum)
- HD Frame Shoring (Steel/Aluminum)
- Post Shores (Steel/Aluminum)

Forming System

- Panel Forming System (Steel/Aluminum)
- Mega Form Panel Forming System (Aluminum)
- Gang Forming System (Aluminum)
- Aluminum Beams
- Aluminum Strong Backs

Technical Services

- Project Analysis
- Technical Training
- On Site Technical Support
- Custom Design



Etobicoke Ironworks Limited

141 Rivalda Road Weston Ontario M9M 2M6

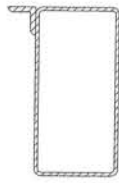
Tel: (416) 742-7111

Fax: (416) 742-2737

email: info@eiw-ca.com

www.eiw-ca.com

COMPONENTS OF EIW STEEL TRUSS SYSTEM



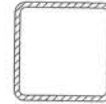
TOP CHORD



BOTTOM CHORD



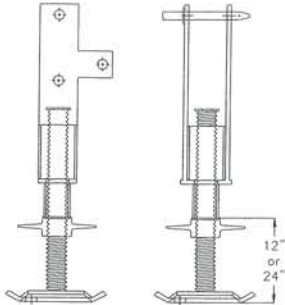
VERTICAL/DIAGONAL
STRUCT



OUTER TRUSS LEG



INNER TRUSS LEG



TRUSS JACK



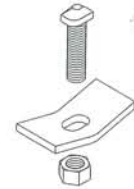
7.5" Al Bm



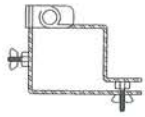
6.5" Al Bm



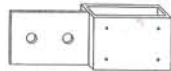
5.5" Al Bm



SPRING CLAMP
w/T-BOLT&NUT



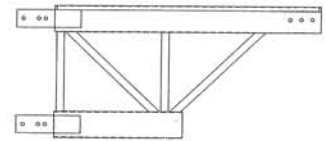
TWO WAY EXT'N
LEG CLAMP



2x4/6 GUARDRAIL
BRACKET

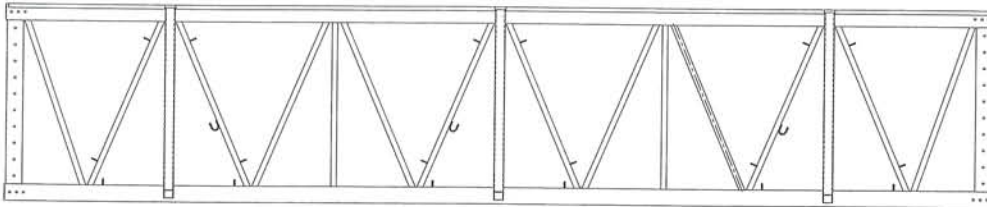


ROLL-OUT FLOOR
ROLLER

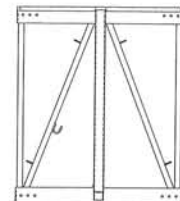


5' SPANDREL END PIECE

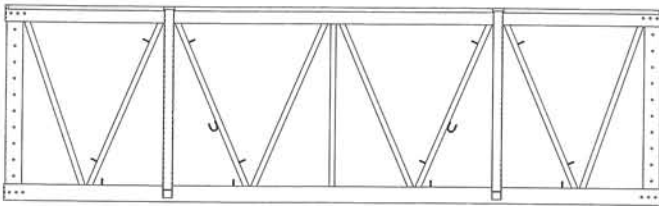
STEEL TRUSS MODULE (5' or 6' HIGH)



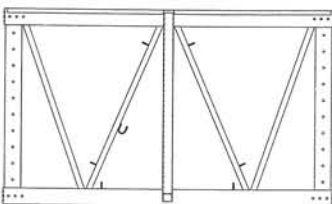
30ft MODULE



5ft MODULE



20ft MODULE



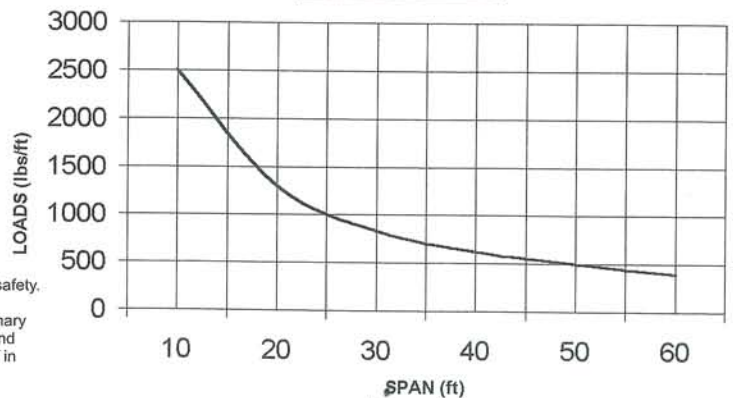
10ft MODULE

Note:

Allowable design values are based on a 2.5 factor of safety.

This truss loading chart is only a guide line for preliminary studies in different applications. eg. shoring, access and winter shelter. The loading may have to be reduced of in fact increased or decreased depending on the intend application.

LOADING CHART



Etobicoke Ironworks Limited

141 Rivalda Road Weston Ontario M9M 2M6
 Tel: (416) 742-7111 Fax: (416) 742-2737
 email: info@eiw-ca.com www.eiw-ca.com

Distributed by: