



THE GARAGE FORMWORK SYSTEM BY ETOBICOKE IRONWORKS

The PT Garage System's formwork is engineered to meet the most demanding specifications of your project. The System is built new to suit the specifications of each project.

Etobicoke Formwork Systems are job proven to give the best economic utilization of man and materials.

Our systems will further enhance and minimize cost on any efficient structural building design.

Products and Services

Access Scaffolding Systems

- TSS Total Scaffold System (Steel/Aluminum)
- TSF Total System Frame (Aluminum)
- Traditional Frame Scaffolding

Shoring Systems

- Truss Shoring System (Steel/Aluminum)
- QSS Quick Strip System (Aluminum)
- HD Frame Shoring (Steel/Aluminum)
- Post Shores (Steel/Aluminum)

Forming System

- Panel Forming System (Steel/Aluminum)
- Mega Form Panel Forming System (Aluminum)
- Gang Forming System (Aluminum)
- Aluminum Beams
- Aluminum Strong Backs

Technical Services

- Project Analysis
- Technical Training
- On Site Technical Support
- Custom Design



EIW TOTAL PARKING
FORMWORK SYSTEMS



Etobicoke Ironworks Limited

141 Rivalda Road Weston Ontario M9M 2M6

Tel: (416) 742-7111

Fax: (416) 742-2737

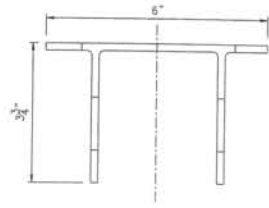
email: info@eiw-ca.com

www.eiw-ca.com

COMPONENTS OF EIW TOTAL PARKING FORMWORK



10" STRINGER BEAM



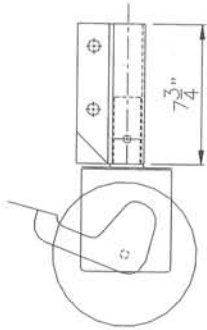
HINGE BRACKET



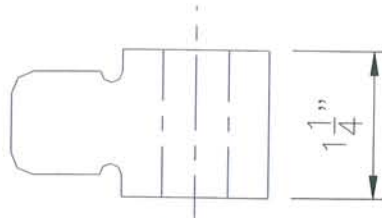
7" LEDGER



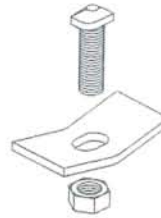
WOOD - I



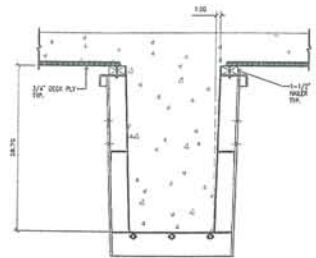
8" CASTER



PACKING CLIP

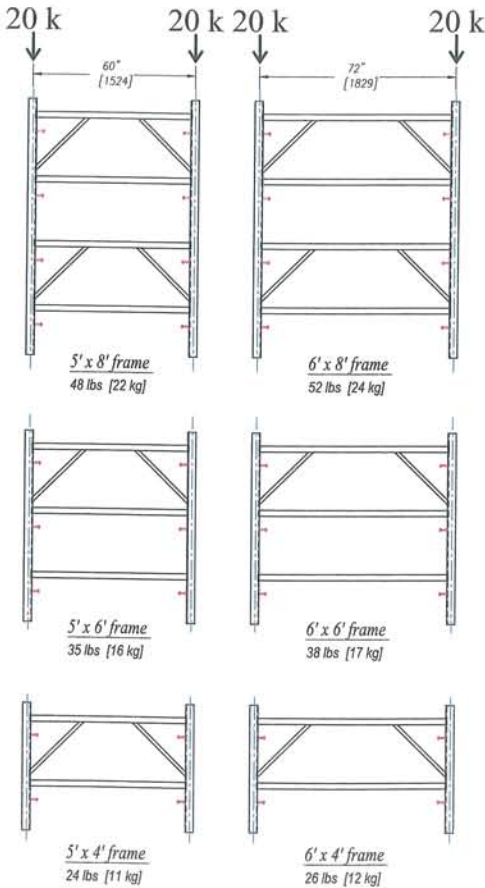


SPRING CLAMP
w/T-BOLT&NUT

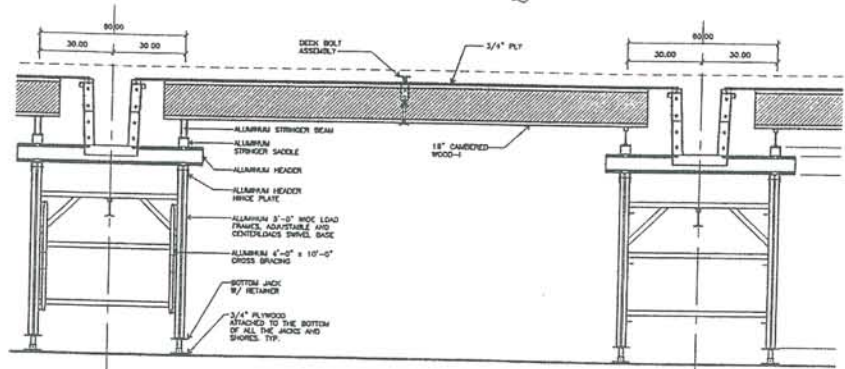
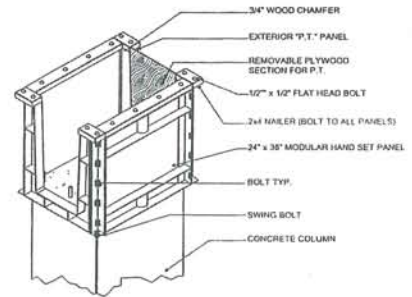


STEEL BEAM FORM

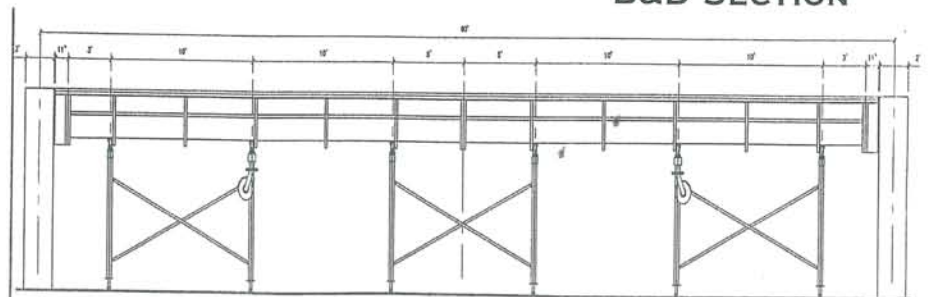
20K LEG AL. FRAME



CAPITAL FORM



B&D SECTION



BEAM ASSEMBLY