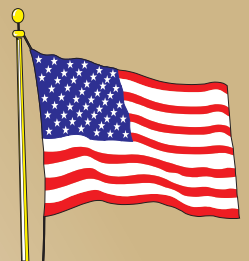




# Building **AMERICA'S** Future... Today!



## Multi-Family



Made in USA



Three-Story

# TOWNHOUSE



**Brunswick**  
24' x 40'  
Three-Story Townhouse  
2,847 sq. ft.

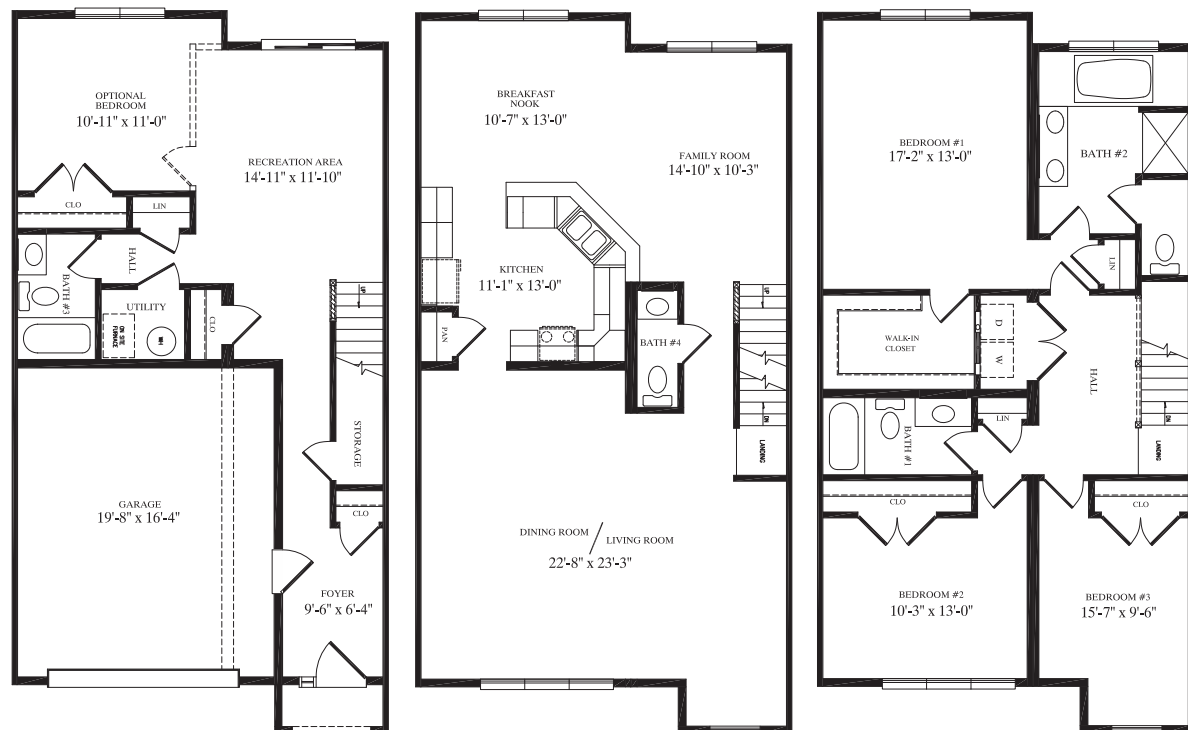


Three-Story

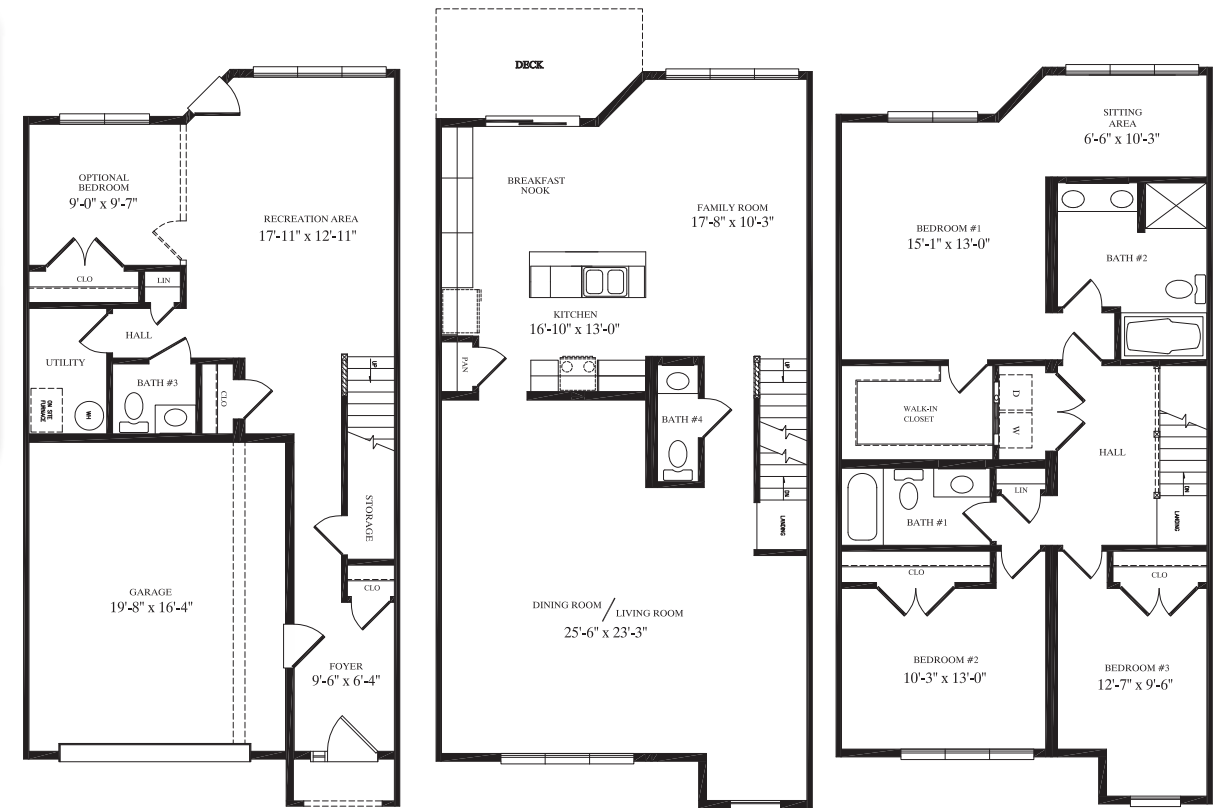
# TOWNHOUSE



**Burtonsville**  
24' x 43'  
Three-Story Townhouse  
3,099 sq. ft.



**Brookville**  
24' x 47'  
Three-Story Townhouse  
3,129 sq. ft.



Three-Story

# TOWNHOUSE

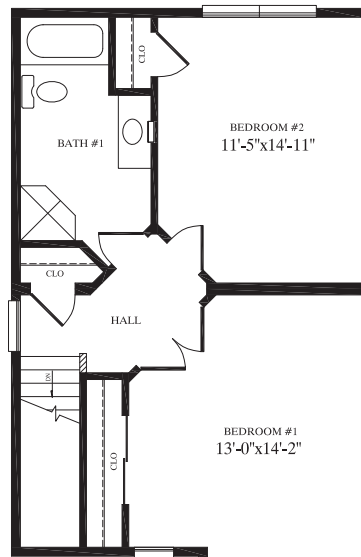
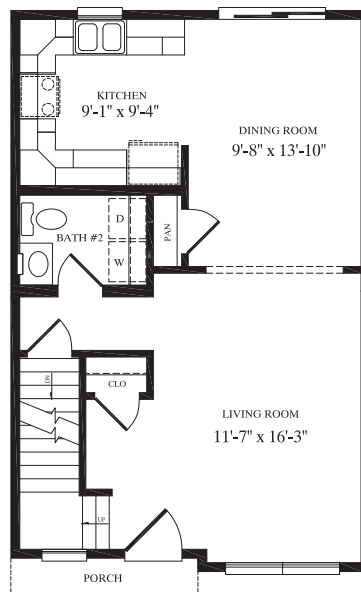




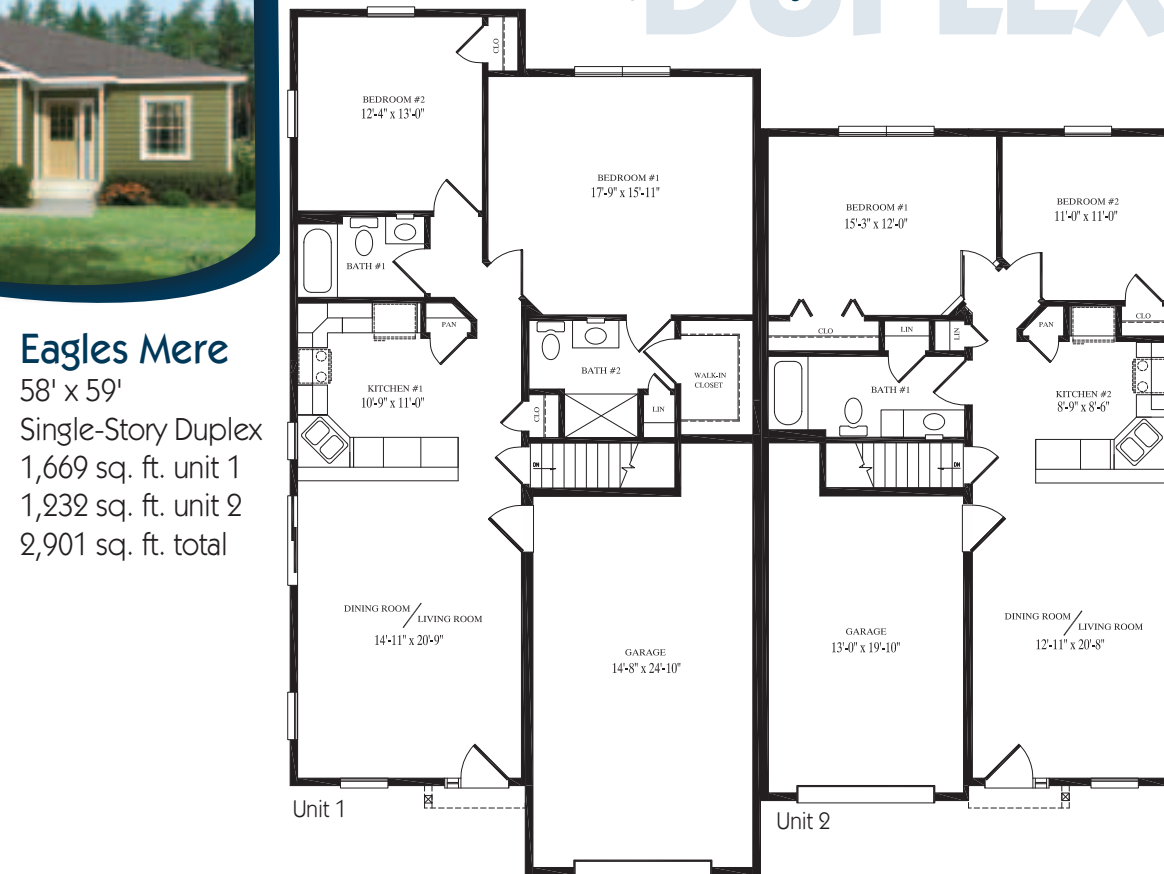


## Single-Story DUPLEX

**Eagles Mere**  
58' x 59'  
Single-Story Duplex  
1,669 sq. ft. unit 1  
1,232 sq. ft. unit 2  
2,901 sq. ft. total

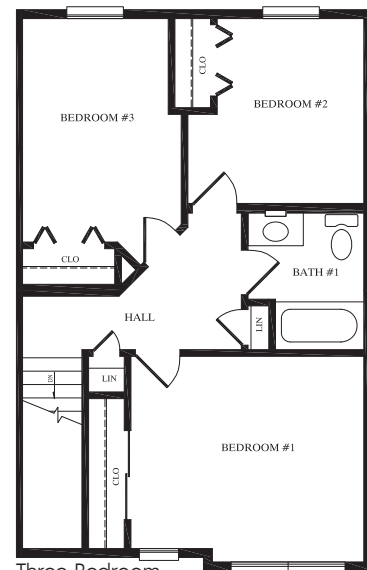


Two-Bedroom  
Model  
4

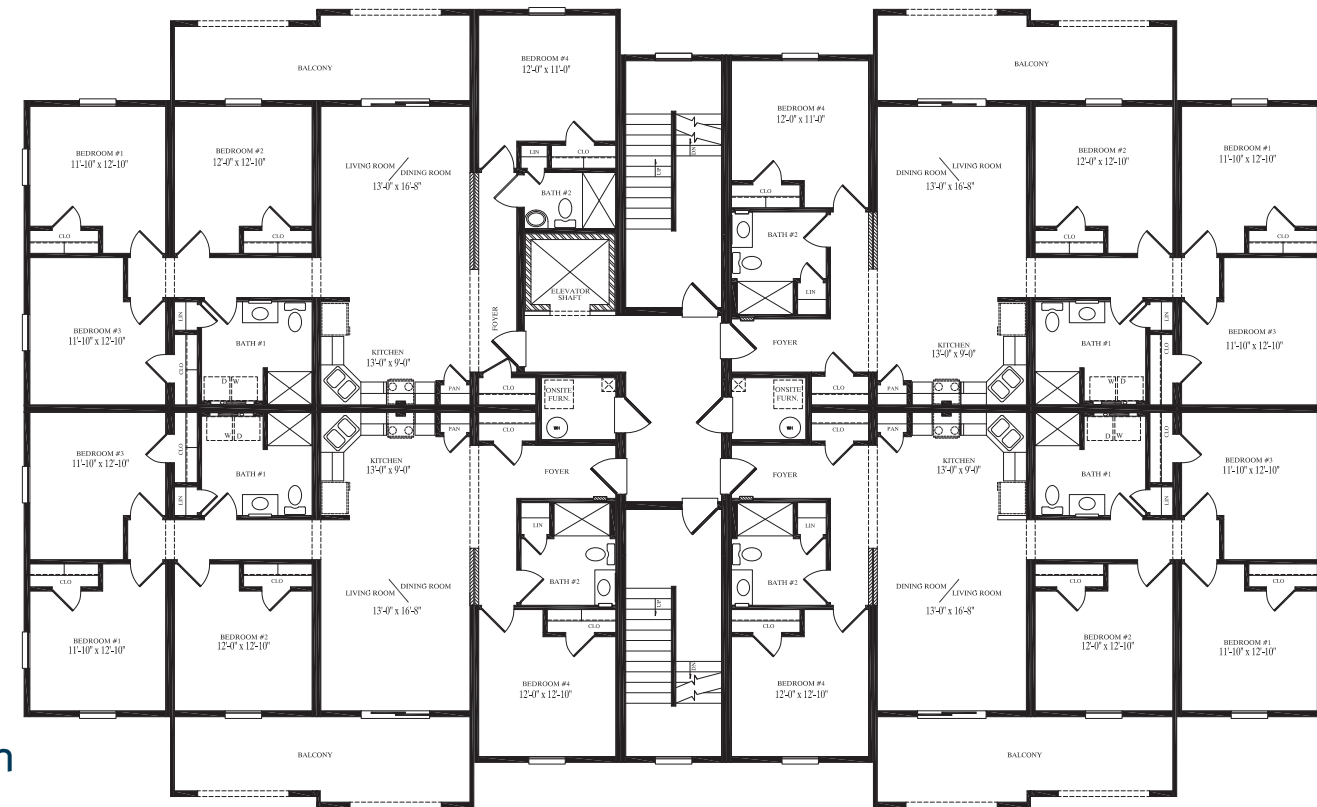


## Two-Story TOWNHOUSE

**Carlisle**  
32' x 20'  
Two-Story Townhouse  
1,244 sq. ft.



Three-Bedroom  
Model



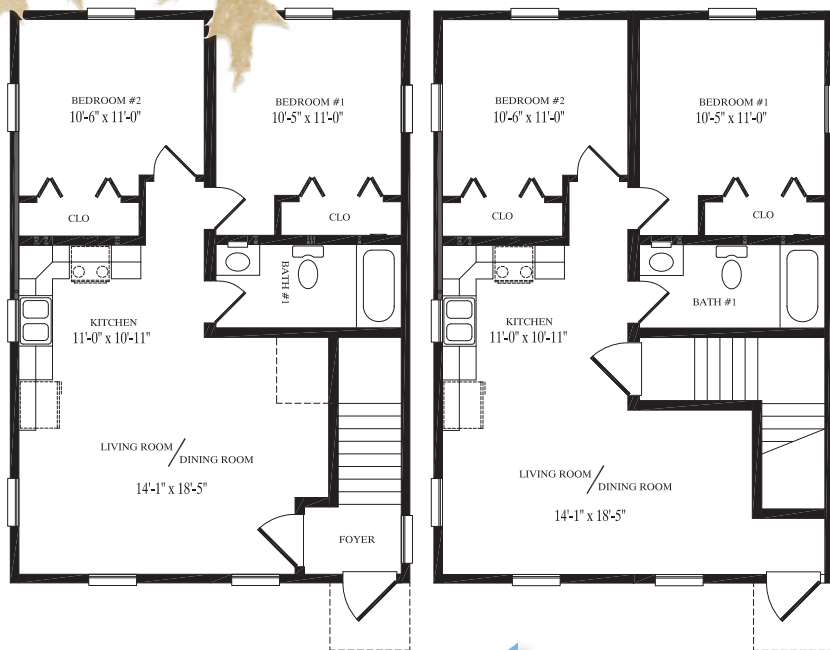
**Hillsborough**  
70' x 114'  
Four-Story Condominium  
1,424 sq. ft. per living unit  
6,485 sq. ft. per floor  
25,940 sq. ft. total

## Four-Story CONDOMINIUM





# Two-Story DUPLEX



**Aberdeen**  
16' x 34'  
Three-Story  
Townhouse  
1,576 sq. ft.

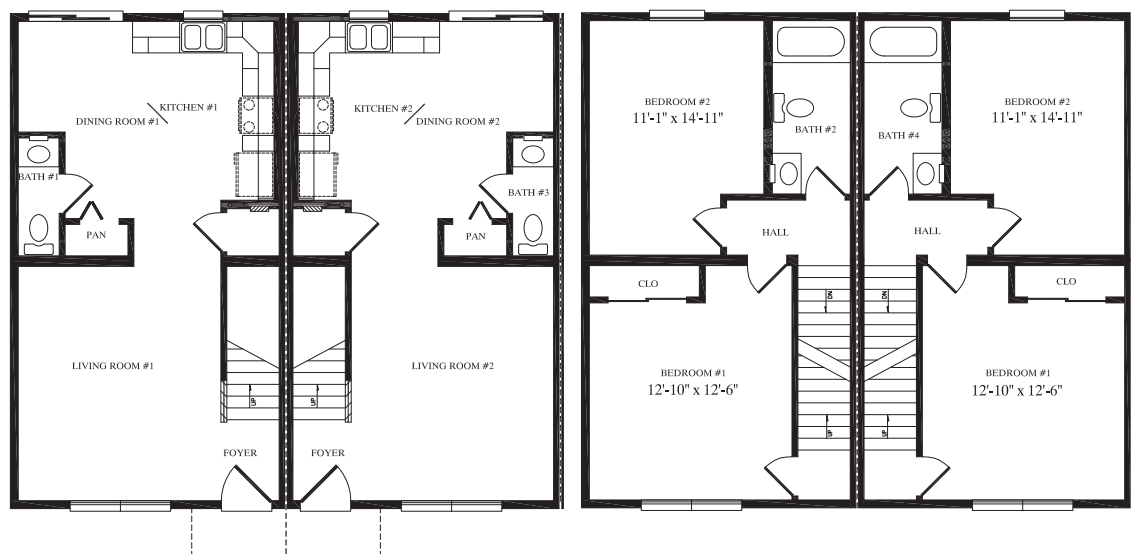


# Three-Story TOWNHOUSE



# Two-Story TOWNHOUSE

**Colebrook**  
18' x 32'  
Two-Story Townhouse  
1,102 sq. ft. per unit  
4,410 sq. ft. total



**Bloomfield**  
24' x 34'  
Two-Story Duplex  
810 sq. ft. per unit  
1,620 sq. ft. total





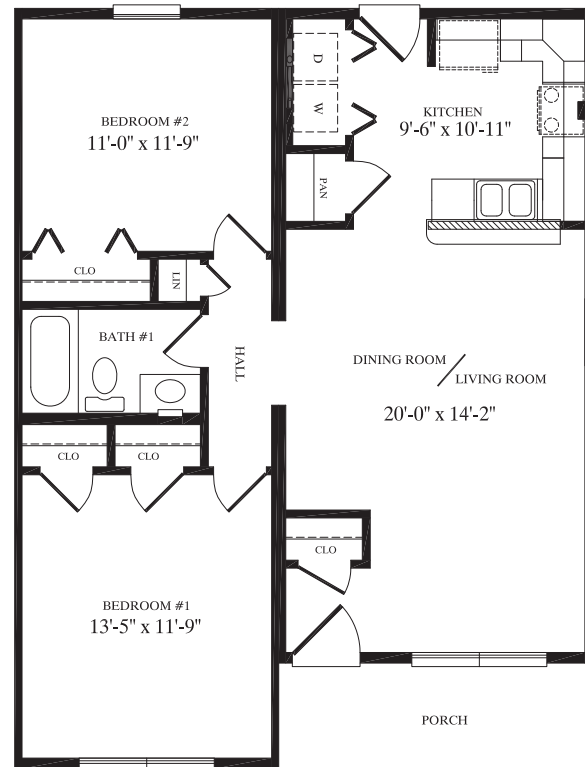


Ranch

DUPLEX

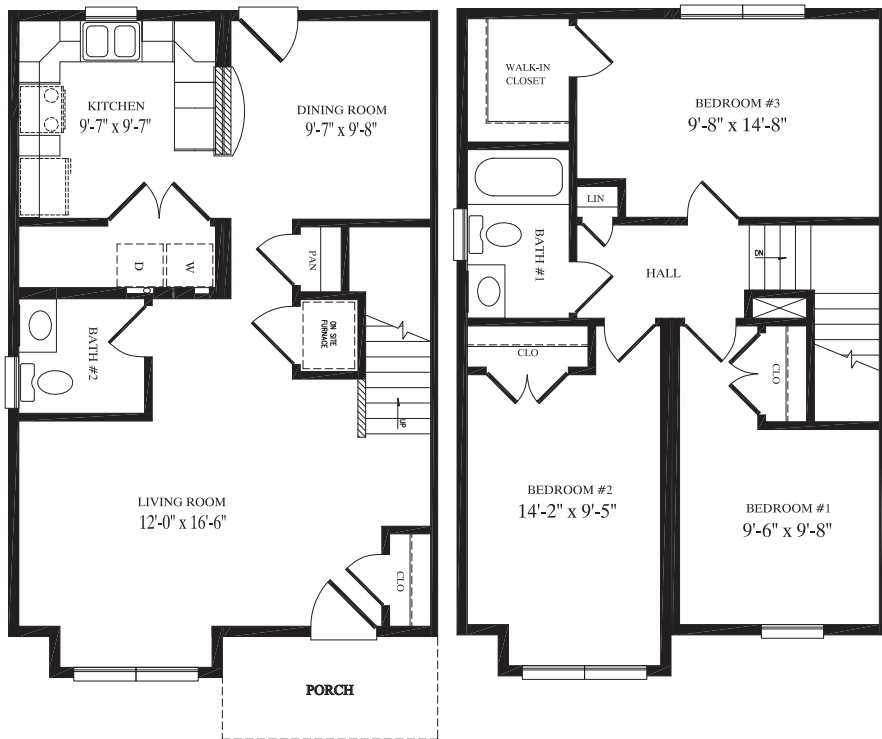
### Annandale

27'5" x 36'  
Ranch Duplex  
915 sq. ft. per unit  
1,830 sq. ft. total

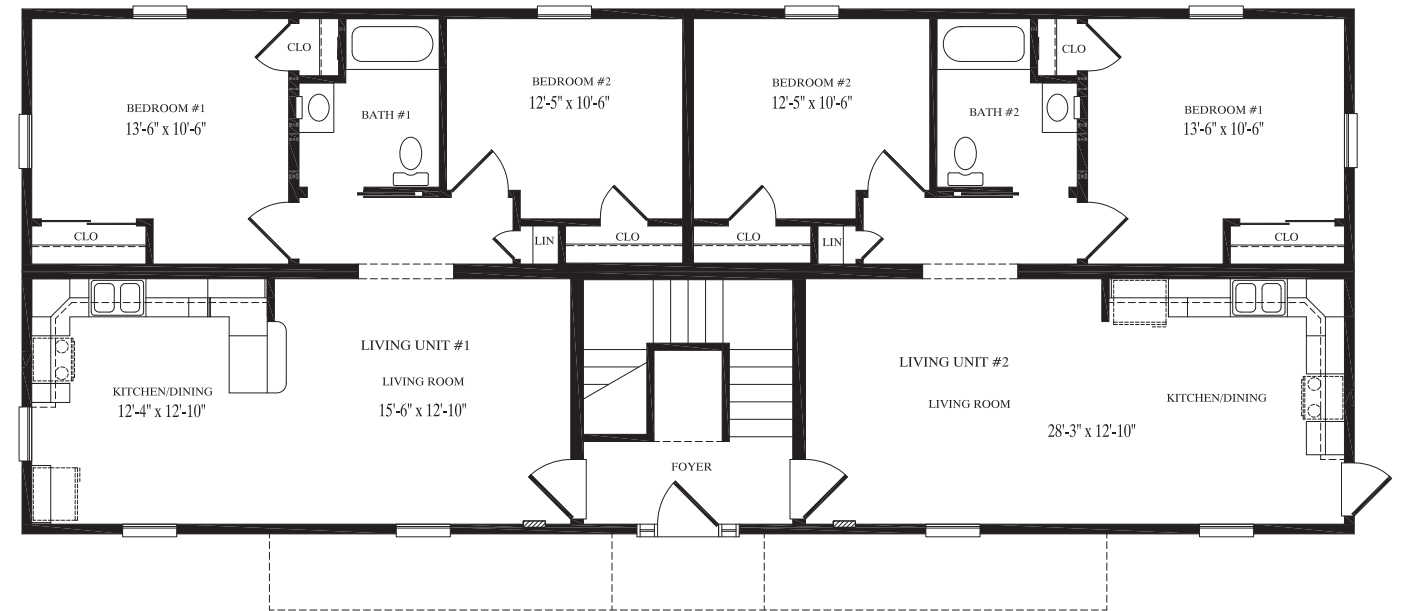


### Bridgeport

33' x 42'  
Two-Story Duplex  
1,308 sq. ft. per unit  
2,616 sq. ft. total



Two-Story  
DUPLEX



Two-Story

QUADRAPLEX

### Belmont

28' x 70'  
Two-Story Quadraplex  
825 sq. ft. per unit  
3,300 sq. ft. total

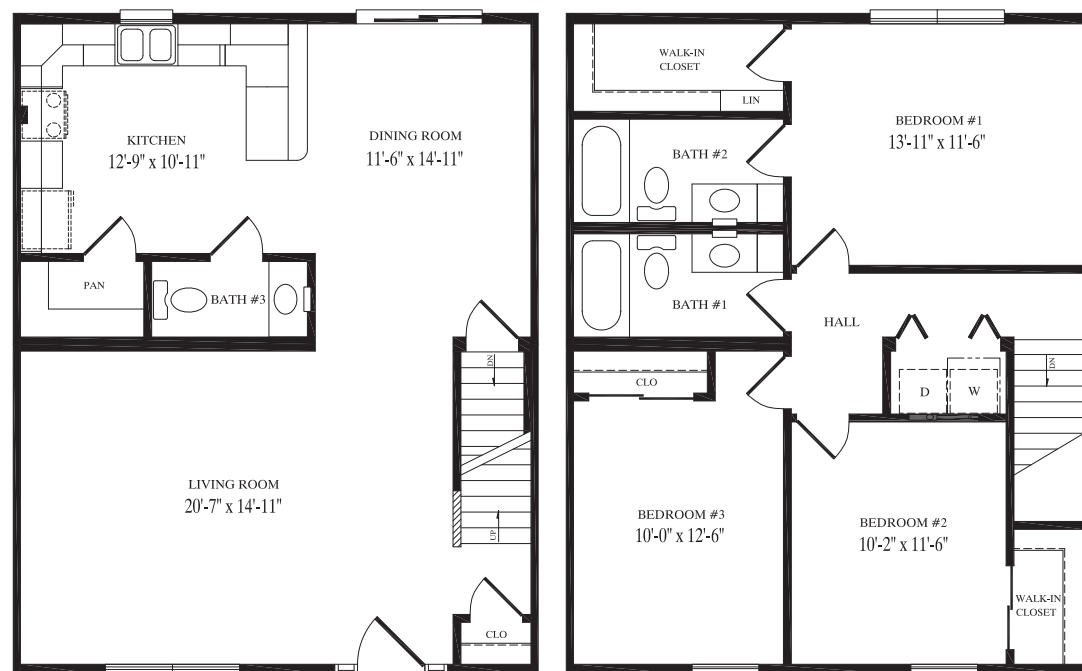




# Two-Story TOWNHOUSE



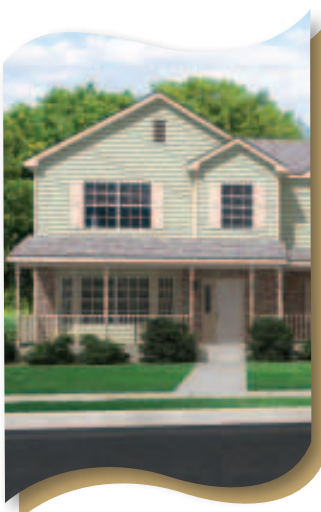
**Pennington**  
32' x 25'  
Two-Story Townhouse  
1,576 sq. ft.



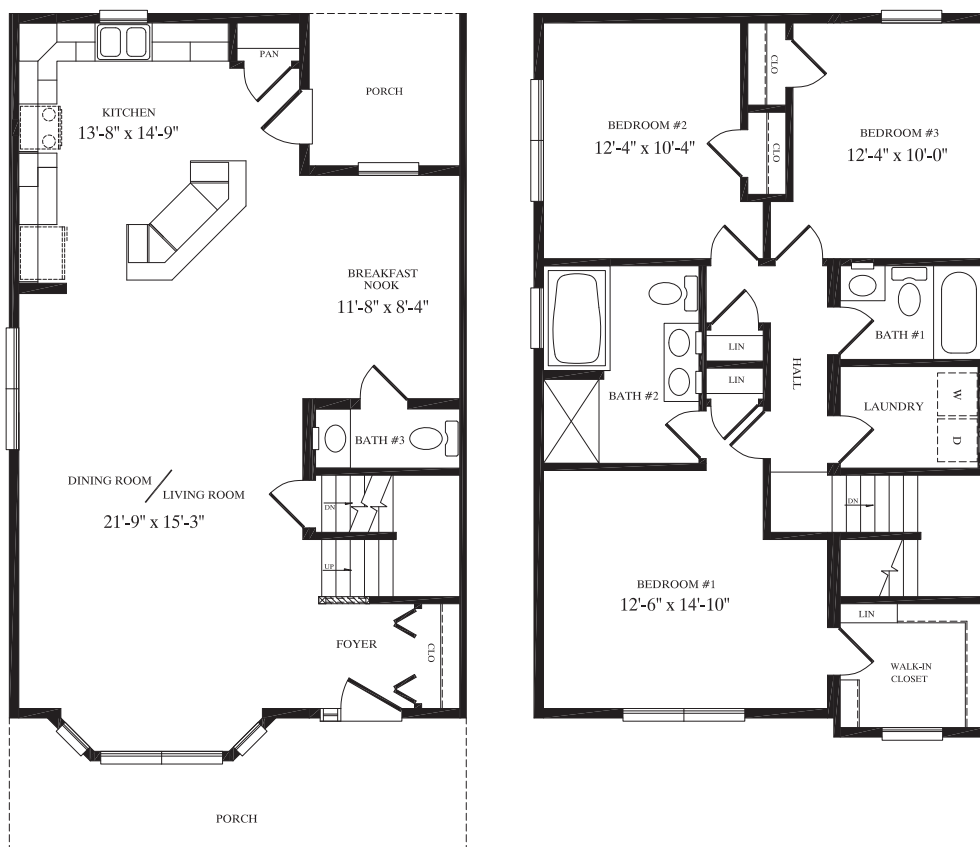
**Roslindale**  
24' x 39'  
Two-Story Townhouse  
1,827 sq. ft.



# Two-Story TOWNHOUSE



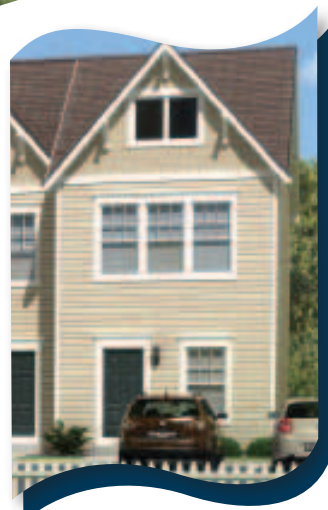
**Torrington**  
24' x 39'  
Two-Story Townhouse  
1,743 sq. ft.



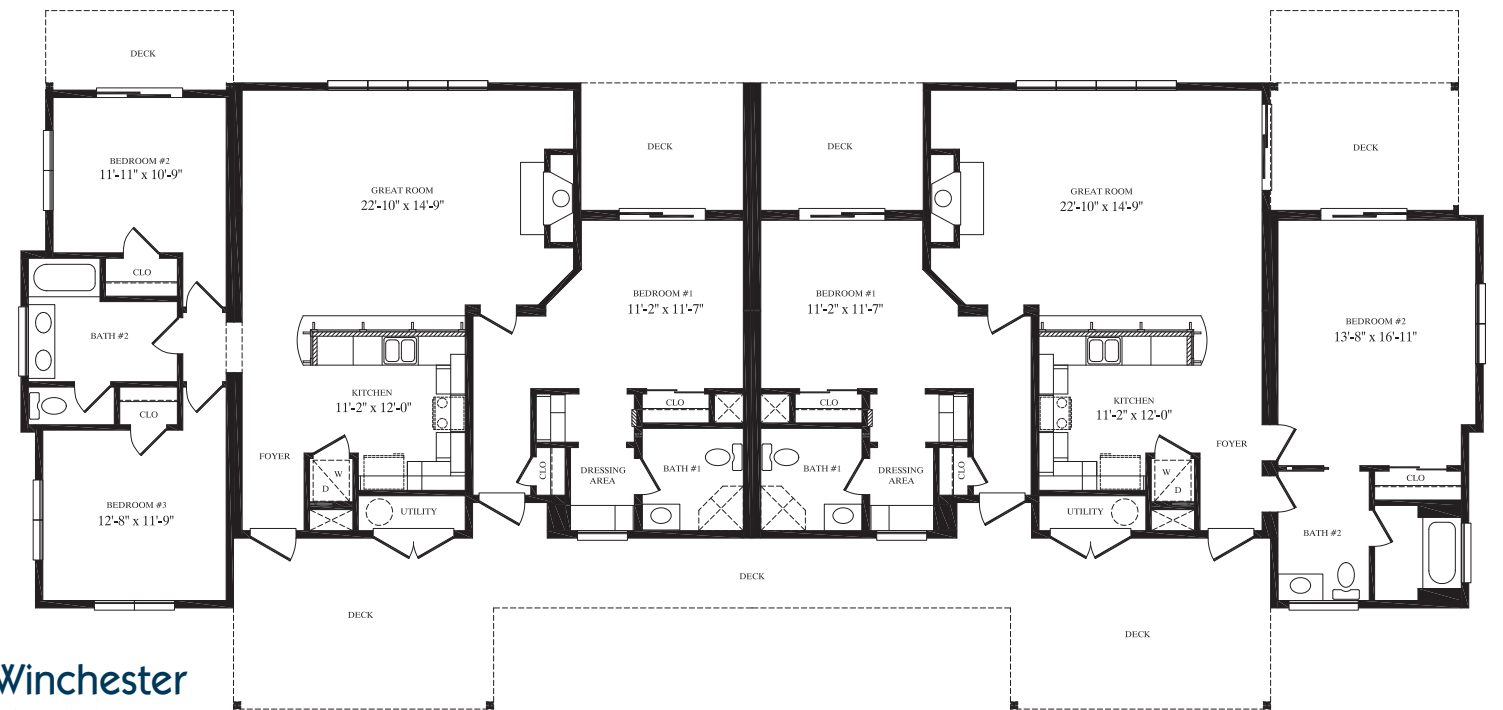




# Three-Story TOWNHOUSE



**Crisfield**  
16' x 35'  
Three-Story Townhouse  
1,120 sq. ft.

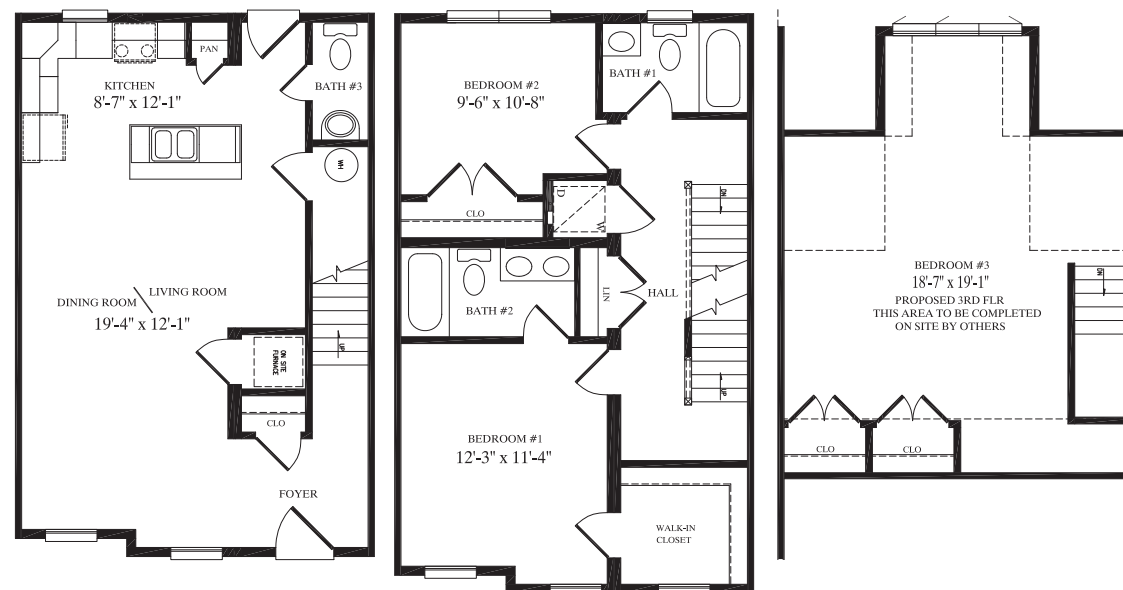


**Winchester**  
36' x 101'  
Two-Story Condominium  
1,402 sq. ft. right living units  
1,507 sq. ft. left living units  
2,909 sq. ft. per floor  
5,818 sq. ft. total

# Two-Story CONDOMINIUM



**Crownsville**  
20' x 30'  
Three-Story Townhouse  
1,218 sq. ft.

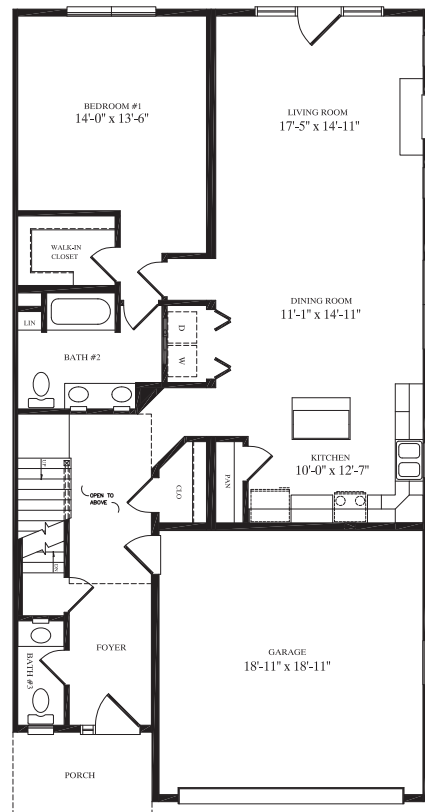
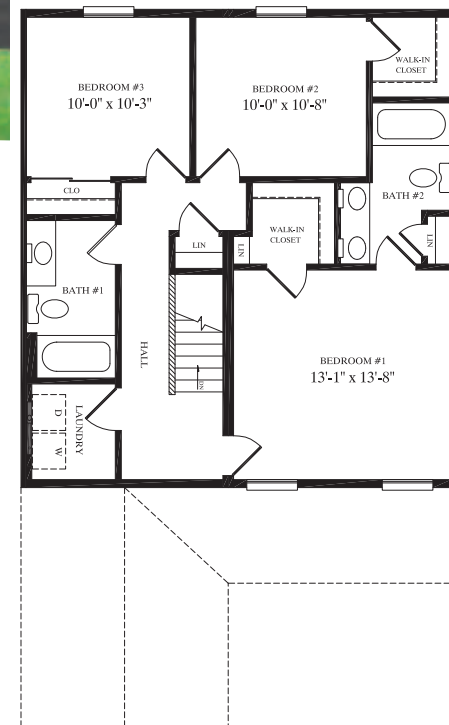
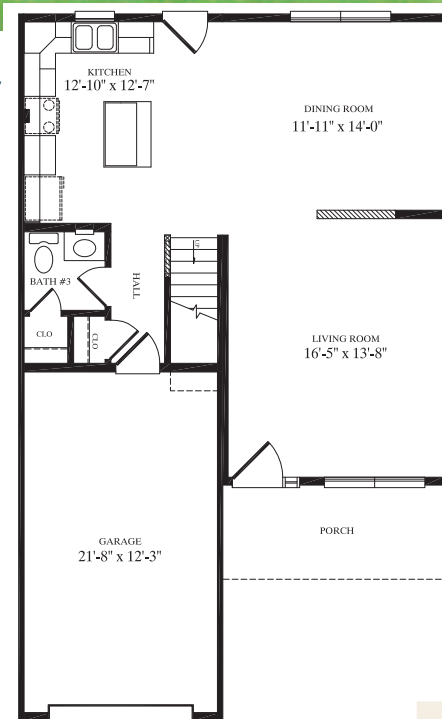




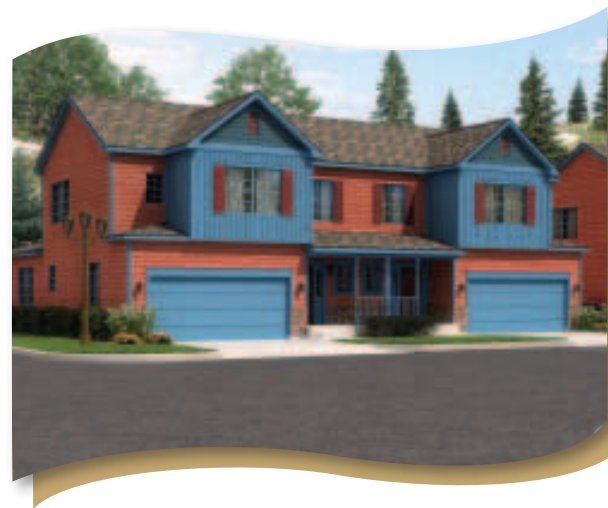
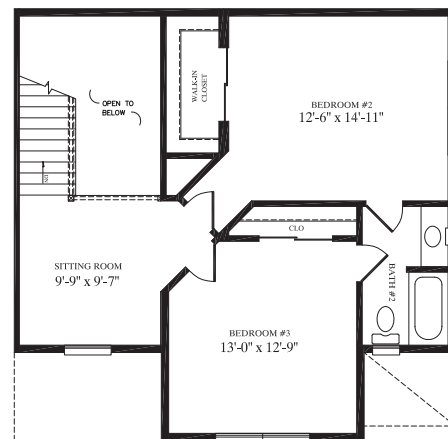


# Two-Story TOWNHOUSE

**Bridgewater**  
27'5" x 45'  
Two-Story Townhouse  
1,845 sq. ft.



**Aspen**  
30' x 57'  
Two-Story Duplex  
2,444 sq. ft.



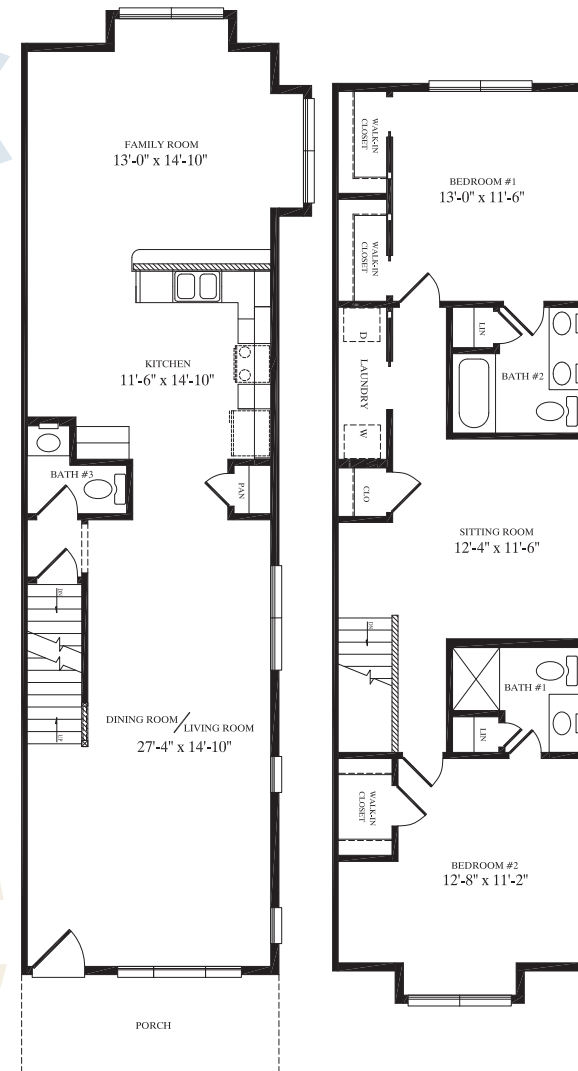
# Two-Story DUPLEX



## Three-Story

# DUPLEX

**Westport**  
16' x 59'  
Three-Story Duplex  
1,812 sq. ft.



## Two-Story

# TOWNHOUSE



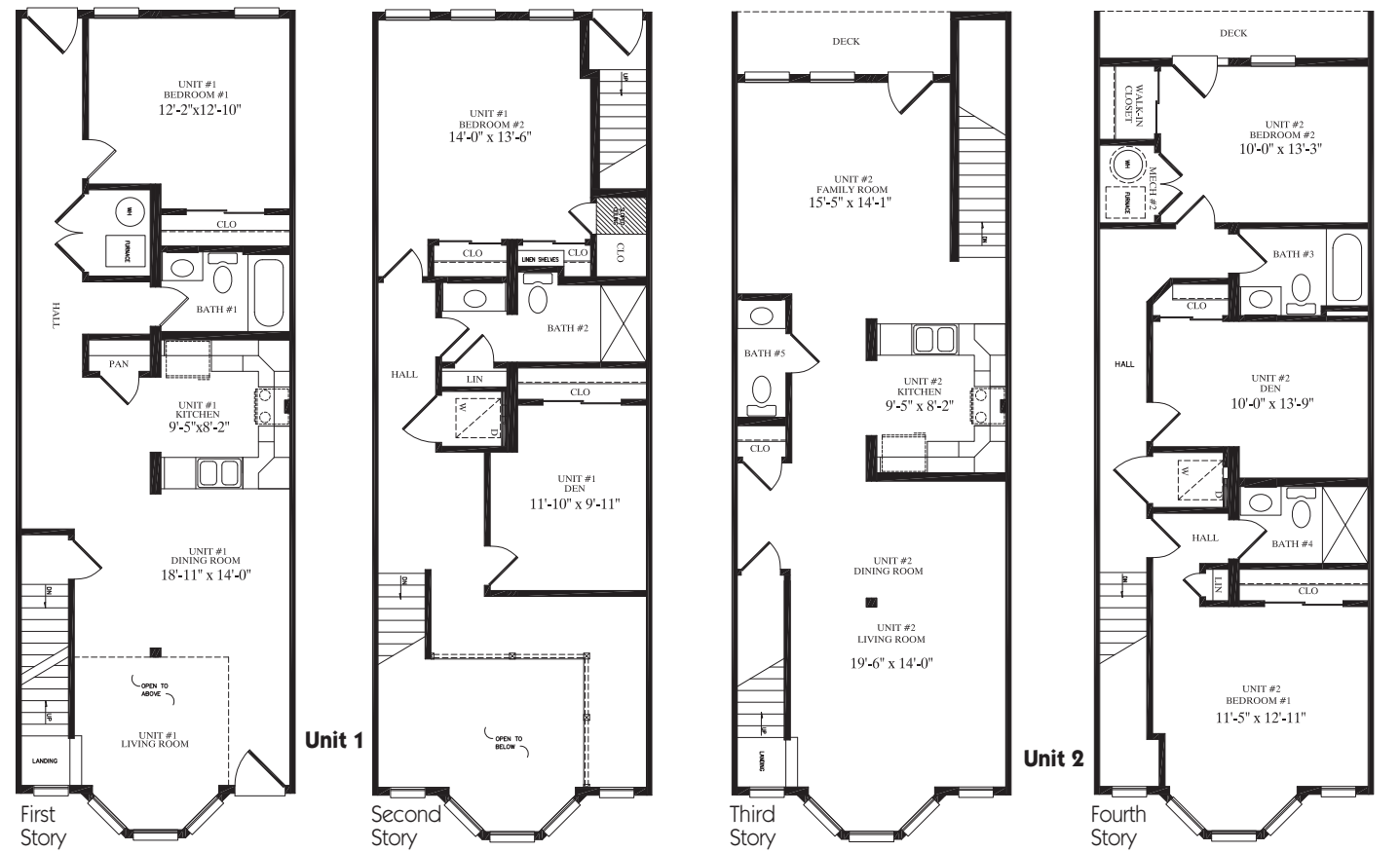
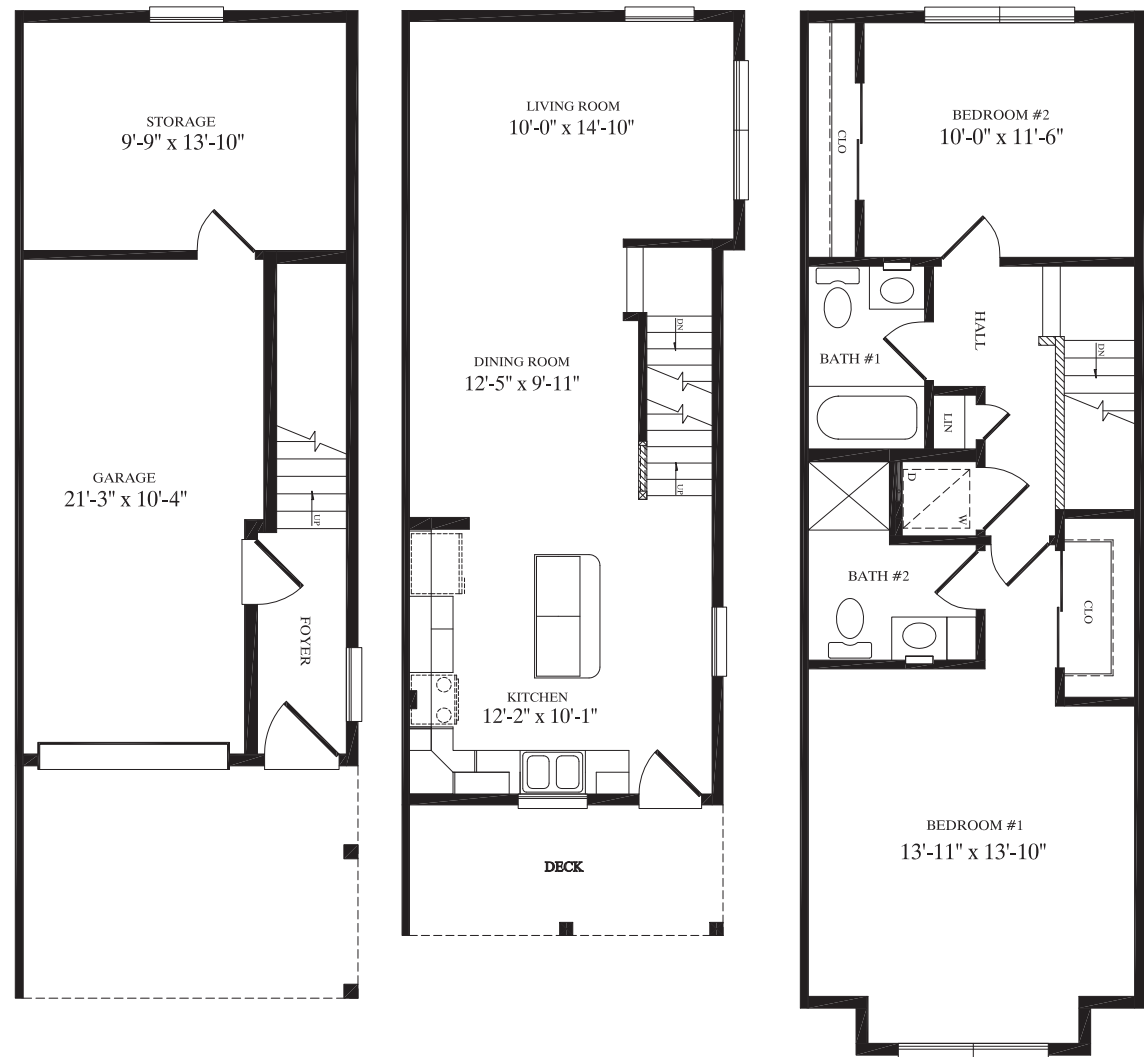
**Ridgeland**  
24'5" x 48'  
Two-Story Townhouse  
2,168 sq. ft.





# Three-Story DUPLEX

**Mystic**  
16' x 45'  
Three-Story Duplex  
1,675 sq. ft.



**Creedmoor**  
18' x 50'  
Four-Story Duplex  
3,638 sq. ft.

# Four-Story DUPLEX



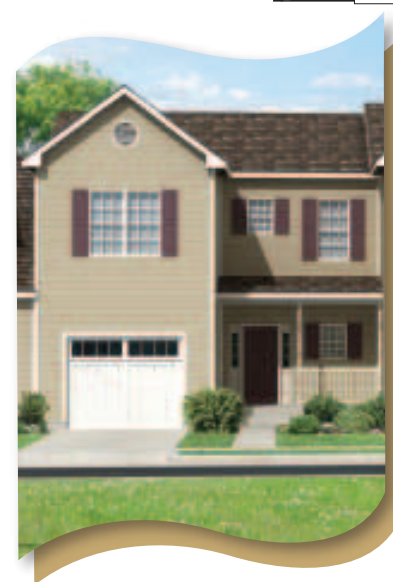
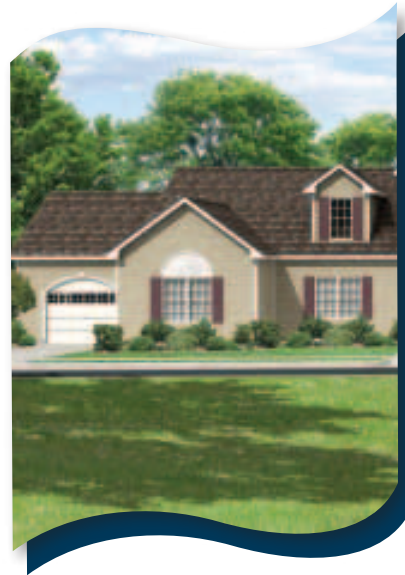




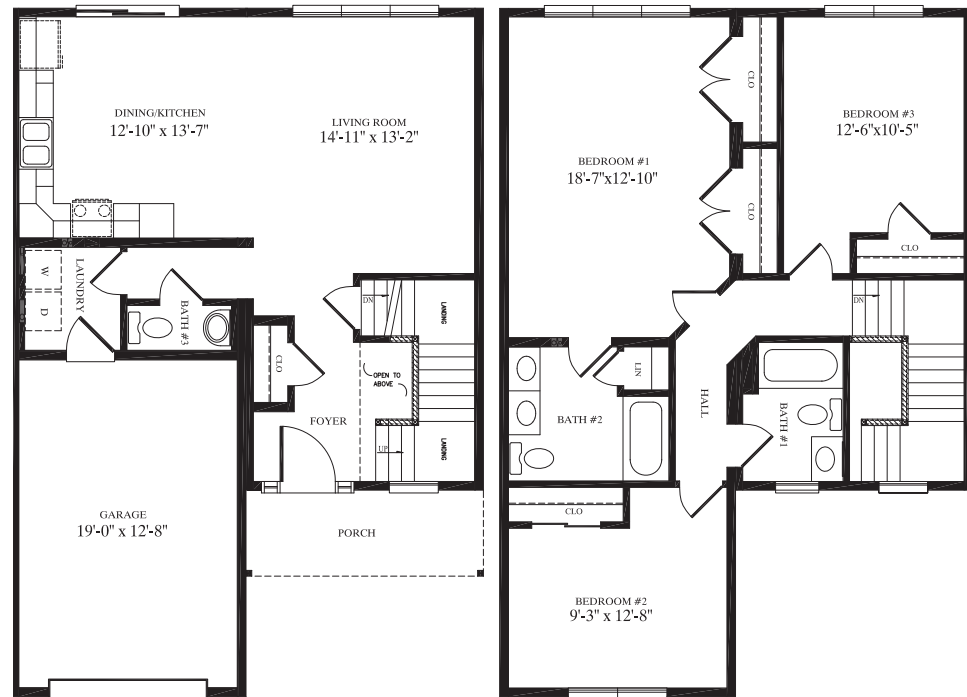
# Two-Story TOWNHOUSE



**Canandaigua**  
48' x 48'  
Cape  
Townhouse  
1,767 sq. ft.



**Ontario**  
28' x 40'  
Two-Story  
Townhouse  
1,868 sq. ft.



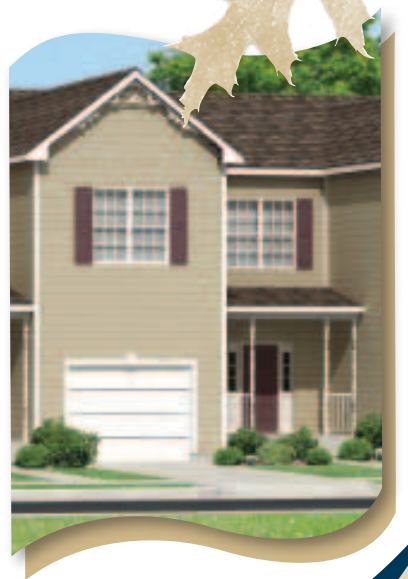
**Cayuga**  
28' x 44'  
Two-Story  
Townhouse  
2,088 sq. ft.



# Two-Story TOWNHOUSE



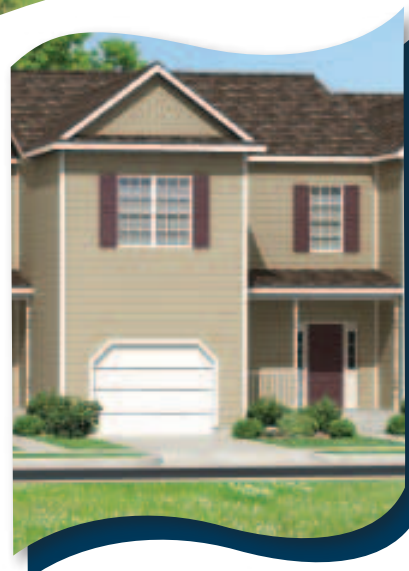
**Oneida**  
28' x 44'  
Two-Story  
Townhouse  
2,088 sq. ft.



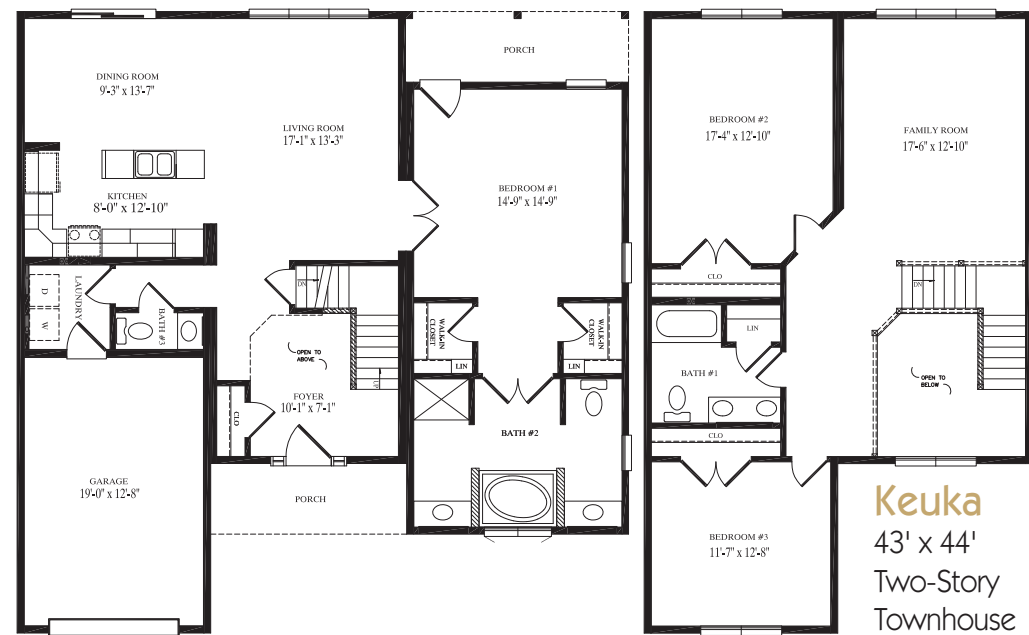




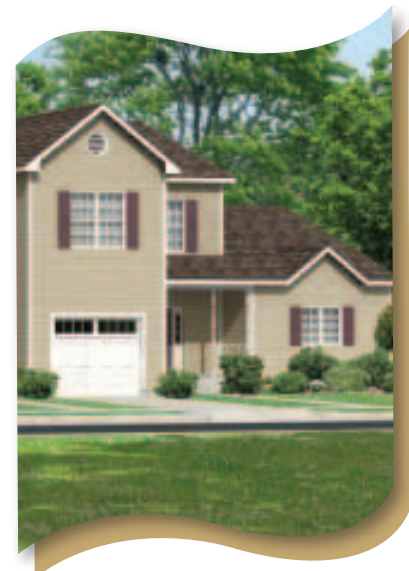
Two-Story **TOWNHOUSE**



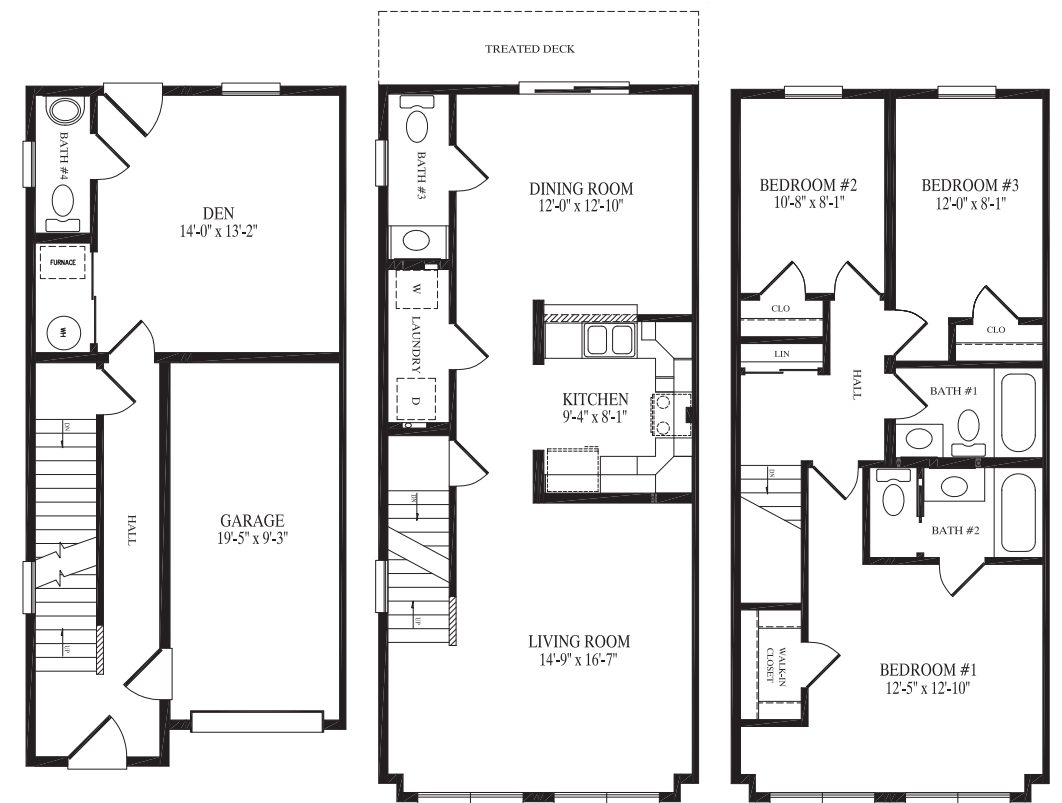
**Seneca**  
28' x 44'  
Two-Story  
Townhouse  
2,364 sq. ft.



**Keuka**  
43' x 44'  
Two-Story  
Townhouse  
2,584 sq. ft.



**Pine Meadow**  
18' x 37'  
Three-Story Townhouse  
1,979 sq. ft.



Three-Story **TOWNHOUSE**



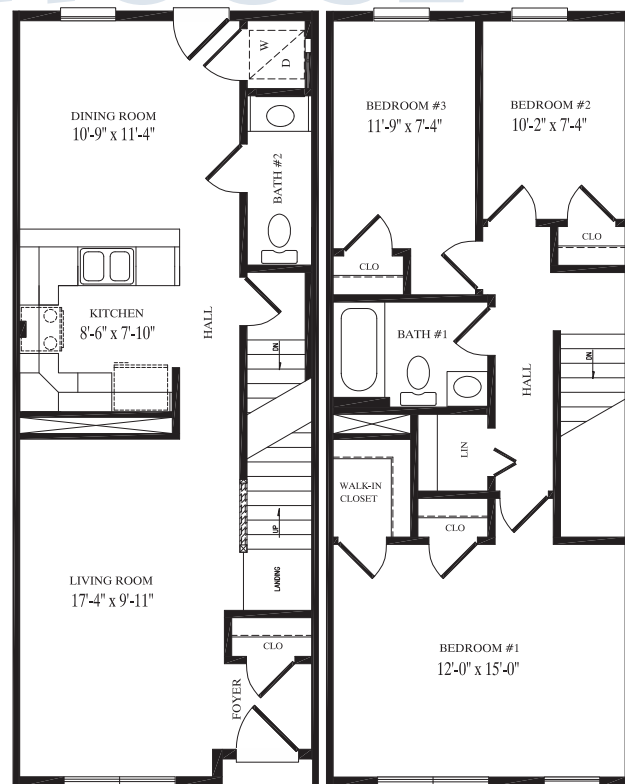


Two-Story

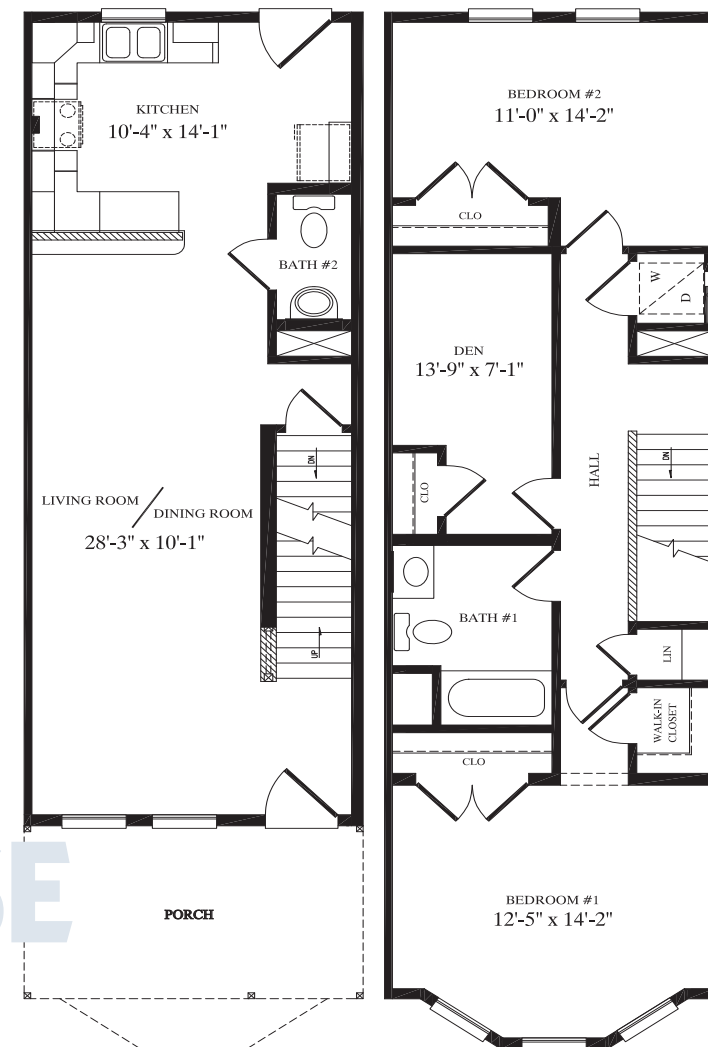
# TOWNHOUSE



**Templeton**  
16' x 40'  
Two-Story  
Townhouse  
1,253 sq. ft.



**Woodbridge**  
15' x 48'  
Two-Story  
Townhouse  
1,295 sq. ft.



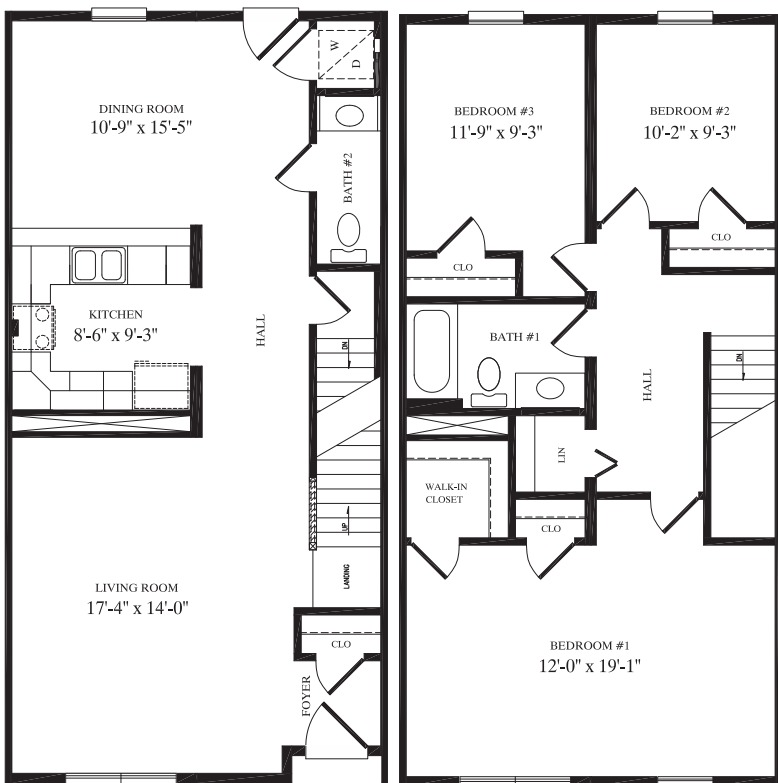
Two-Story

# TOWNHOUSE



Two-Story

# TOWNHOUSE



**Brookshire**  
20' x 40'  
Two-Story  
Townhouse  
1,578 sq. ft.





Professional Building Systems, Inc.



72 East Market Street

Middleburg, PA 17842

Phone (570) 837-1424

Fax (570) 837-6133

[www.pbsmodular.com](http://www.pbsmodular.com)



*Great Homes Start With Quality Products...*

**CertainTeed**  
WARRANTY

**Clarion**  
BATHWARE

**DURON**  
PAINTS & WALLCOVERINGS

**Merillat.**  
Make perfect sense.

**MOEN**  
Buy it for looks. Buy it for life.®

**Ply GEM**  
WINDOWS

**RWC**  
10 Year New Home Warranty

**TAMKO**  
ROOFING PRODUCTS

**USG**

Your PBS Builder/Developer

Builders/Developers are not agents of Professional Building Systems.

NOTE: All renderings are artist's concepts only and may vary from actual home.