

C285-100 Kellogg® Cookies n Cream



Issue Date:	3/12/2019	Revision:	C
-------------	-----------	-----------	---

PRODUCT DESCRIPTION	
Varying sized pieces of chopped premium sandwich cookies.	

PHYSICAL ATTRIBUTES							
Appearance:	Irregular pieces varying in size and shape.						
Color:	Dark chocolate brown cookie base with white cream filling.						
Flavor:	Base has typical chocolate character with a sweet flavored filling.						
Texture:	Cookie base is crunchy with soft creamy filling.						
Pack Size:	4x2.5 Lbs. bags						
Case Dimensions:							
L[depth]xWxH in.	12.1	14.1	5.9	Case Cube(ft ³):	0.5825	Pallet Conf. (TI / HI)	9 13

INGREDIENTS	
SUGAR, ENRICHED FLOUR (WHEAT FLOUR, NIACIN, REDUCED IRON, VITAMIN B1 [THIAMIN MONONITRATE], VITAMIN B2 [RIBOFLAVIN], FOLIC ACID), SOYBEAN AND PALM OIL WITH TBHQ FOR FRESHNESS, COCOA PROCESSED WITH ALKALI, INVERT SUGAR, CONTAINS 2% OR LESS OF DEGERMINATED YELLOW CORN FLOUR, CORNSTARCH, CHOCOLATE, SALT, LEAVENING (BAKING SODA, MONOCALCIUM PHOSPHATE), ARTIFICIAL FLAVOR, SOY LECITHIN, WHEY.	
ALLERGENS:	CONTAINS: WHEAT, MILK AND SOY.

NUTRITIONAL INFORMATION	
NUTRIENT	Per 100g
CALORIES	476
TOTAL FAT (g)	18.7
SATURATED FAT (g)	6.3
TRANS FAT (g)	0.3
CHOLESTROL (mg)	0
SODIUM (mg)	411
TOTAL CARBOHYDRATE (g)	72.4
DIETARY FIBER (g)	2.8
TOTAL SUGARS (g)	40
ADDED SUGARS (g)	39.3
PROTEIN (g)	5.2
VITAMIN D (mcg)	0
CALCIUM (mg)	29.1
IRON (mg)	5.3
POTASSIUM (mg)	151



Nutrition Facts	
About 302 servings per container	
Serving size	2 Tbsp (15g)
Amount per serving	
Calories	70
<small>% Daily Value*</small>	
Total Fat 3g	4%
Saturated Fat 1g	5%
Trans Fat 0g	
Cholesterol 0mg	0%
Sodium 60mg	3%
Total Carbohydrate 11g	4%
Dietary Fiber 0g	0%
Total Sugars 6g	
Includes 6g Added Sugars	12%
Protein 1g	
Vitamin D 0mcg	0%
Calcium 4mg	0%
Iron 1mg	6%
Potassium 23mg	0%
<small>*The % Daily Value tells you how much a nutrient in a serving of food contributes to a daily diet. 2,000 calories a day is used for general nutrition advice.</small>	

Brand Name:	TR Toppers	Net Weight: (Lbs.)	10.00
Country of Origin	USA	Net Weight: (Kg.)	4.54
Case GTIN	0 06 51844 10005 2	Gross Weight: (Lbs.)	11.00
Kosher	Star-D	Gross Weight: (Kg.)	4.99
Metal Detection	1.5mm Ferrous	1.8mm Non-Ferrous	2.0mm SS316
		Density (lbs/gal)	4.29

MICROBIOLOGICAL ATTRIBUTES*	
Attributes	Limits
Total Aerobic Plate Count (cfu/g)	<10,000
Yeast and Mold (cfu/g)	<100
Coliforms (cfu/g)	<10
E. coli (/g)	Negative
Salmonella (/375g)	Negative
Staphylococcus (coag.)	Negative
L. Monocytogenes	Negative

*The above attributes are provided by the product manufacturer. Parameters are guaranteed attributes. It is not indicative of product testing.

GMO STATEMENT	
X	Produced with Genetic Engineering.
	Partially Produced with Genetic Engineering.
	May be produced with Genetic Engineering.
	NOT Produced with Genetic Engineering.

STORAGE CONDITIONS	
Recommended Condition:	Best kept ambient ($\leq 100^{\circ}\text{F}$).
Alternate Condition:	N/A
Alternate Condition:	N/A

SHIPPING CONDITIONS	
Recommended Condition:	May be shipped at ambient ($\leq 100^{\circ}\text{F}$).
Alternate Condition:	May be shipped in a refer truck at 0°F for transit up to 7 days.
Alternate Condition:	N/A

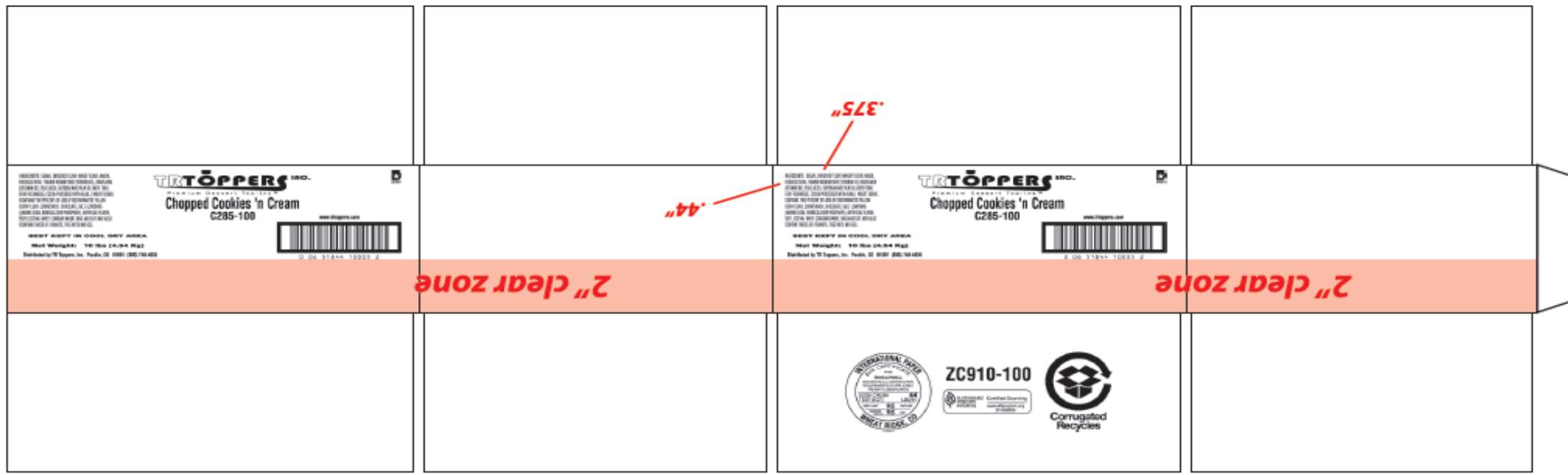
SHELF LIFE	
Recommended Shelf Life:	270 days at recommended storage conditions.
Alternate Shelf Life:	60 days once opened.
Alternate Shelf Life:	N/A

ALLERGEN / SENSATIZER TABLE			
COMPONENT	PRESENT IN PRODUCT	PRESENT IN PRODUCTS MANUFACTURED ON THE SAME LINE	PRESENT IN THE SAME MANUFACTURING PLANT
PEANUTS AND DERIVATIVES	NO	YES	YES
TREE NUTS AND DERIVATIVES	NO	YES	YES
EGG AND DERIVATIVES	NO	YES	YES
MILK AND DERIVATIVES	YES	YES	YES
SOY AND DERIVATIVES	YES	YES	YES
WHEAT	YES	YES	YES
FISH	NO	NO	NO
CRUSTACEAN SHELLFISH	NO	NO	NO
SULFITES > 10 ppm	NO	YES	YES
MUSTARD	NO	NO	NO
SESAME	NO	NO	NO
GLUTEN	YES		
ARTIFICIAL FLAVOR SOURCE	Vanillin		
FD&C ARTIFICIAL COLORS	None		

GRANULATION										
Sieve Size	3/4"	1/4"	#12	Pan						
Range (%)	0 - 0.7	28.7 - 74.9	18.7 - 49.6	0.5 - 27.5						

CODE FORMAT	EXAMPLE: 25811 15:32 C285-100
Case Code - Left Side: JJJYL, Time, Product Code, PCO	JJJ = Production Julian Date 258 = September 15; Y = Last Digit of Year 1 = 2011; L = Line (Numeric) 1 = Line 1; Time: HH:MM 15:32 = 3:32 p.m. Product Code = (e.g. C285-100)
Case Code - Right Side: JJJYL, Time, Product Code, PCO	
Pallet Markings: JJY, Pallet #, Product Code	

LABEL / CASE GRAPHICS



INGREDIENTS: SUGAR, ENRICHED FLOUR (WHEAT FLOUR, NIACIN, REDUCED IRON, THIAMIN MONONITRATE [VITAMIN B1], RIBOFLAVIN [VITAMIN B2], FOLIC ACID), SOYBEAN AND PALM OIL (WITH TBHQ FOR FRESHNESS), COCOA PROCESSED WITH ALKALI, INVERT SUGAR, CONTAINS TWO PERCENT OR LESS OF DEGERMINATED YELLOW CORN FLOUR, CORNSTARCH, CHOCOLATE, SALT, LEAVENING (BAKING SODA, MONOCALCIUM PHOSPHATE), ARTIFICIAL FLAVOR, SOY LECITHIN, WHEY. CONTAINS WHEAT, MILK AND SOY. MAY ALSO CONTAIN TRACES OF: PEANUTS, TREE NUTS AND EGG.

TR TOPPERS INC.
 Premium Dessert Top-Ins™
Chopped Cookies 'n Cream
C285-100



www.trtoppers.com

BEST KEPT IN COOL DRY AREA

Net Weight: 10 lbs (4.54 Kg)

Distributed by TR Toppers, Inc. Pueblo, CO 81001 (800) 748-4635



ZC910-100



Corrugated Recycles