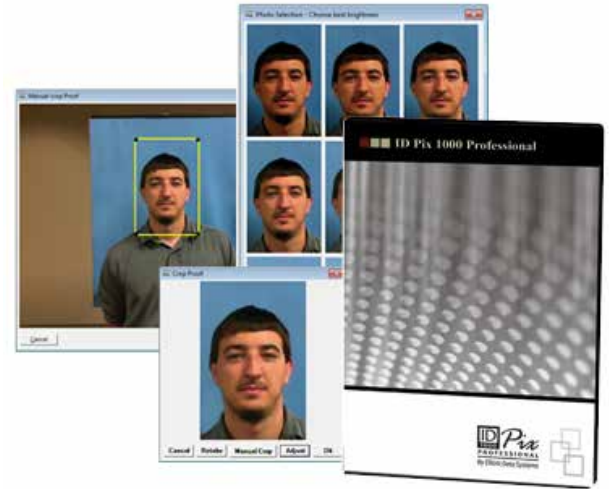




IDPix 1000 Professional

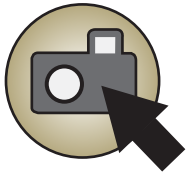
Simplify portrait photo capture by using a one click software solution that results in a more professional look for your ID cards.

Perform high level image capture with the simple click of a button to produce high quality ID badges. This intuitive software solution works with a number of long life cameras and is integrated with Mobile Solutions™ and other identity software to deliver consistent image capture using automatic editing features needed to obtain the highest quality image. Quickly and efficiently issue quality IDs by using this dependable, user-friendly capture solution with your ID card system.



Just one click will give anyone the perfect picture every time!

IDPix1000 Professional camera software allows users to capture the best possible image every time they take a picture. With automatic cropping, shading adjustments and exposure features, a quality photo will result every time no matter who presses the button. It's really that easy!



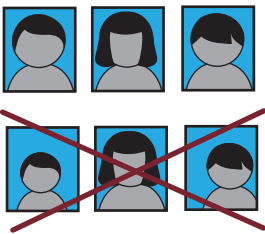
Once Click Performs Multiple Steps to Capture the Best Image

One Click Automation

IDPix1000 Pro software is unique because it performs a number of automated functions to guarantee a perfect picture every time with only one click. Other camera software solutions require users to click through a number of steps to get the same results. With IDPix 1000 Pro, you don't have to remember all those steps. Just point and click.

Consistent Photo Capture

With IDPix1000 Pro one click photo capture, different users can take multiple photos at any given time with the same results regarding photo size, position, lighting, etc. Once the camera is integrated, settings will stay secure resulting in fewer technical glitches and pictures that are consistent in appearance and quality.



Long Life Camera Solutions

Avoid sinking money into digital cameras that quickly become outdated and have to be replaced due to a lack of manufacturer support. Choose from a selection of long life cycle cameras that are integrated with BadgePass, IDCentre, WebID and Mobile ID 1.0 providing a more comprehensive camera capture solution. Choose from simple web cams to higher end AutoCam camera.



IDPix 1000 Pro Features

- > One Click Photo Capture & Auto Cropping
- > Quickly Capture High Quality Photos
- > Cable Management
- > Ability to Integrate with Multiple Cameras & Software
- > Reliable, Consistent Performance
- > Streamlined Design & Function Controls
- > User Friendly Software Interface
- > Live Video Previews
- > One Click Capture or Manual Crop
- > Consistent Cropping Performance
- > Easy Setup with No Calibration Necessary
- > Auto White Balance, Auto Exposure
- > "Brady Bunch" Screen for Post Capture Shading Adjustments



A Flexible Solution

Adjustment Options

While IDPix 1000 Professional software provides a one click capture process that automatically captures the photo in seconds, it also provides the option for the user to make some minor adjustments if desired.



1. Once the photo is captured, the user may choose to preview the photo.



2. The user can adjust manually crop the image using the cropping tool.



3. Once the photo is cropped, they may also choose from a "Brady Bunch" selection of that photo with different brightness variations.

Camera Options

Choose from a variety of long life cycle cameras designed to exclude the numerous buttons and knobs normally used to adjust settings and control functions. This simple design allows the camera to be integrated with IDPix 1000 Pro software and other identity software without the risk of settings being compromised by users. By protecting the settings, users are guaranteed a consistent, quality photo every time they take a picture with the simple click of one button.



***Just simply point and shoot and you'll
have a perfect photo captured in seconds!***



Contact Elliott Data Systems, Inc. for more information or a free demonstration.

1-888-345-8511

www.elliottmobilesolutions.com