

"HUNTER SERIES GRAIN DRILL" by PLOTMASTER™

THE HUNTER SERIES GRAIN DRILL IS THE PERFECT ATTACHMENT FOR PLANTING ALL TYPES OF SEED "IN ROWS"
INCLUDING; Corn, Soybeans, Grain Sorghum, Sunflowers, Peas, Cereal Grains, etc.

H-GD-8-101-14



Included:

4 Row Dispensing Bars (1-R/1-L)

(4) Backing Plates for Mounting

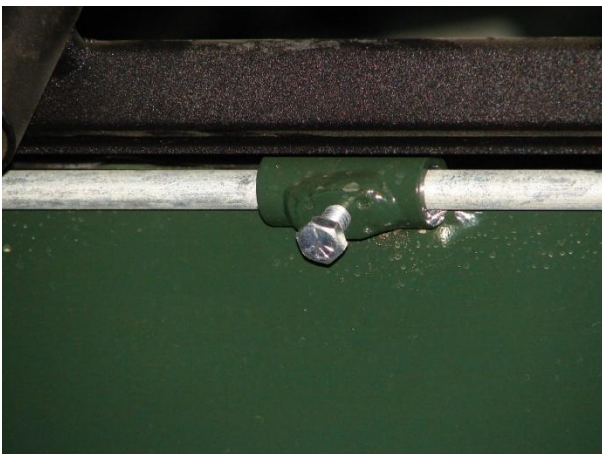
24 Hose Clamps

8 Flex Hose w/Metal Tubes

4 Single "Seal Off" Shields

2 Double "Seal Off" Shields

3 "S" Tines w/tips



STEP #1:
Loosen
Cinch bolt in
center of
Splatter
Shield so
Splatter
Plate is lying
fully
horizontal





STEP #2:
Place the
Dispensing
Bar On top of
Splatter Plate
underneath
Versa Seeder



**(Left side from rear) 4 ROW DESPENSING BAR;
1 x 1 SQUARE TUBE WITH ROUND DISPENSING
TUBES AFFIXED TO BAR WITH EACH TUBE
STATIONED UNDER DESIGNATED DROP HOLES
BENEATH THE SEEDER ASSEMBLY.**

**(Right side from rear) 4 ROW DESPENSING BAR;
1 x 1 SQUARE TUBE WITH ROUND DISPENSING
TUBES AFFIXED TO BAR WITH EACH TUBE
STATIONED UNDER DESIGNATED DROP HOLES
BENEATH THE SEEDER ASSEMBLY.**

(Right and Left Dispensing Bar Included) (Dispensing Bar's Mount between Seeder Assembly and Splatter Plate)



**(Left side from rear) 4 ROW DESPENSING BAR; 1 x 1 SQUARE TUBE WITH
DISPENSING TUBES AFFIXED TO BAR WITH EACH TUBE STATIONED UNDER
(4) DROP HOLES BENEATH THE SEEDER BOX.**

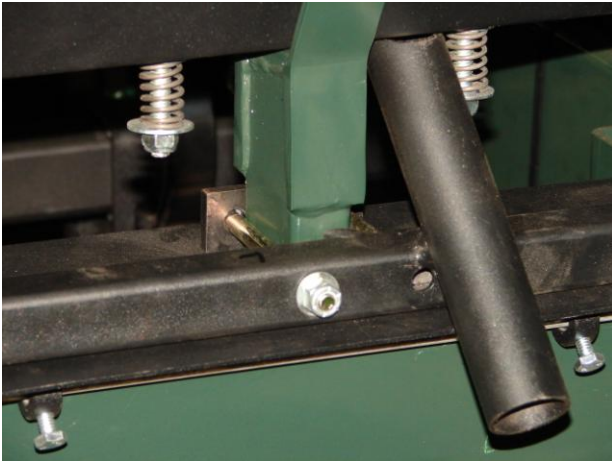
(Right and Left Dispensing Bar Included)



**(Right side from rear) 4 ROW DESPENSING BAR; 1 x 1 SQUARE TUBE WITH
DISPENSING TUBES AFFIXED TO BAR WITH EACH TUBE STATIONED UNDER
(4) DROP HOLES BENEATH THE SEEDER BOX.**

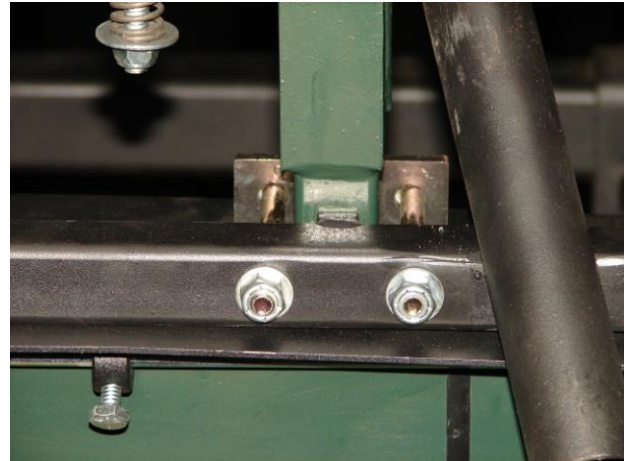
(Right and Left Dispensing Bar Included)

Left Dispensing Bar from rear view of Plotmaster



**STEP #3:
Mount the
Dispensing
bar with the
Mounting
Plates**

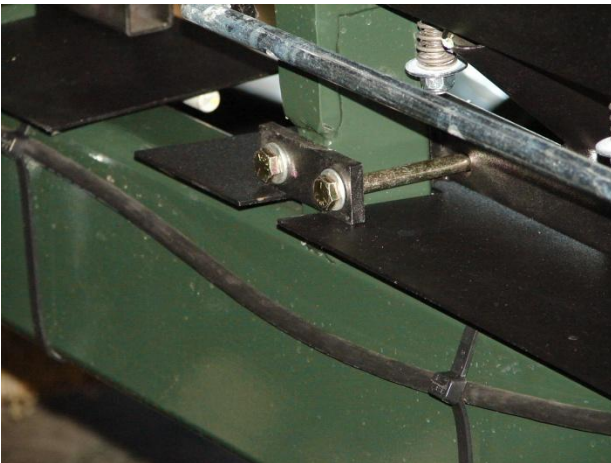
Right Dispensing Bar from rear view of Plotmaster



(Dispensing Bar Round Metal Tubes Face outward towards drag/cultipacker)

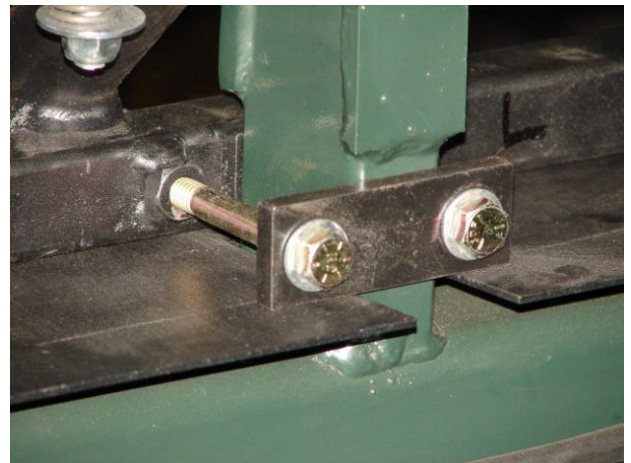
BACKING PLATES COUPLED WITH THE 5/16" HEX BOLTS ARE FOR SECURING THE DISPENSING BAR TO THE "Y" BRACKET. THE "Y" BRACKET IS LOCATED UNDER THE VERSA SEEDER ASSEMBLY WHERE IT MOUNTS TO THE MAIN FRAME.

(L- Plate faces towards the front of the unit)



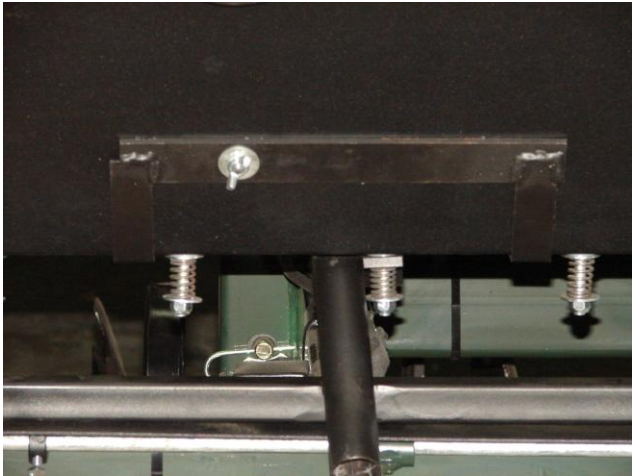
Left Dispensing Bar has (4) Pre-drilled holes for mounting. There are (4) 5/16" Hex bolts, (8) 5/16" Flat Washers and (4) 5/16" Nylock nuts to secure the Dispensing Bar to the "Y" Bracket

(R- Plate faces towards the front of the unit)



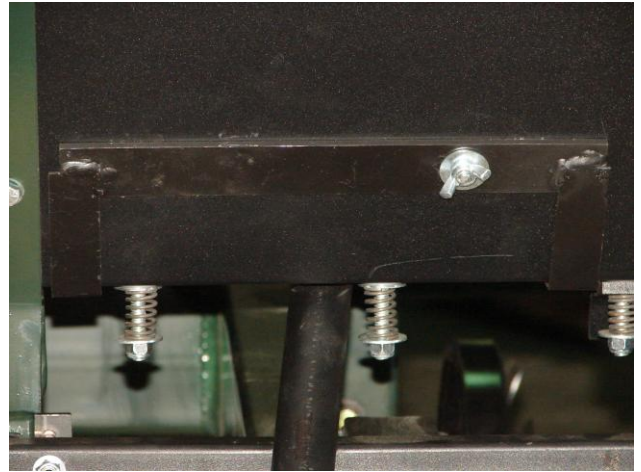
Right Dispensing Bar has (4) Pre-drilled holes for mounting, (1) with welded nut. There are (4) 5/16" Hex bolts, (7) 5/16" Flat Washers and (3) 5/16" Nylock nuts to secure the Dispensing Bar to the "Y" Bracket

(L- Dual Seal Off Shield)



STEP #4:
Affix "Dual
Seal Off
Shields" to
back of
Seeder
Assembly
with
existing
wing nuts

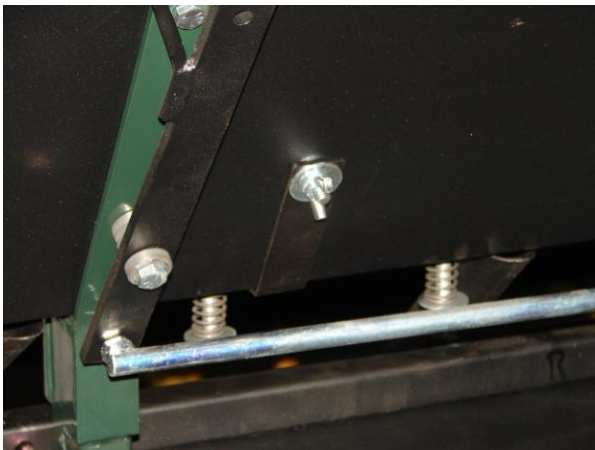
(R- Dual Seal Off Shield)



2 DUAL "SEAL OFF" SHIELDS (1-R & 1-L) ARE USED TO CLOSE OFF EXCESS HOLES OF EACH 40" SEED BOX WHILE USING THE GRAIN DRILL. THIS REDUCES A (16 HOLE) DROP SEEDER TO A (8 HOLE) ROW PLANTING SYSTEM.

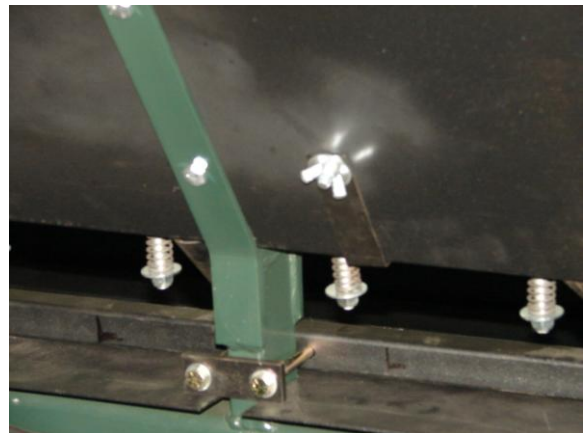
(Dual "Seal Off Shield's" mount to the back of the Seeder, facing the Cultipacker/Drag Assembly and are mounted using the existing bolts that hold the Augar Shield securely inside the Versa Seeder Over the Versa Brush)

(L- Single Seal off Shield Close Up)



STEP #5:
Mount the
Seal Off
Shields to the
Seeder
Assembly with
existing Wing
Nuts

(R- & L Seal off Shield Where Boxes meet in Center)



4 (2 PER Box) Single "SEAL OFF" SHEILDS ARE USED ON THE HUNTER 800 TO SEAL OFF THE EXTRA HOLES ON THE 40" SEED BOX TO INSURE THERE IS NO LOSS OF SEED WHEN USING THE 8 ROW PLANTING SYSTEM.

(Single "Seal Off Shield" Mounts to the front of the Seeder Assembly, facing the towing vehicle and are mounted using the existing bolts that hold the Augar Shield securely inside the Versa Seeder Over the Versa Brush)

STEP #6:

SWAP OUT THE EXISTING “GOOSE FOOT” TIPS WITH THE (5) REVERSIBLE SPIKES. THEN AFFIX THE (3) ADDITIONAL TINES TO THE PLOW BAR (SPACING AS DESIRED). THEN AFFIX THE FLEX HOSES TO THE DISPENSING BAR AND THE METAL DROP TUBES TO THE BACK OF THE (8) “S” TINES USING THE METAL CLAMPS PROVIDED



THE (8) WHITE FLEX HOSES HAVE A RIBBED OUTSIDE FOR DURABILITY AND SMOOTH INSIDE WALLS FOR GOOD SEED FLOW. THE KIT CONSIST OF (3) ADDITIONAL “S” TINES AND (8) REVERSIBLE SPIKES FOR CHANGING OUT THE GOOSE FOOT SWEEP AND ADDING (3) TINES TO MAKE A TOTAL OF (8) TINES WITH REVERSIBLE SPIKES FOR (8) ROWS WHEN PLANTING.



THE 8 METAL TUBES ARE SECURED TO THE “S” TINES WITH ¾” HOSE CLAMPS FOR EASY INSTALLATION AND REMOVAL. THIS INSURES THE DESPENSING OF SEED INTO THE FURROWS. THE METAL ROD WELDED TO THE ROUND TUBE FITS SECURELY INTO THE CREVIS OF THE TINE AND THEN IS SECURED WITH THE CLAMP INTO PLACE.

THIS GRAIN DRILL ATTACHMENT CAN BE USED WITH THE “HUNTER SERIES 800 MODELS” THAT PLOTMASTER CURRENTLY PRODUCES.

THIS GRAIN DRILL IS PERFECT FOR ANYONE WANTING TO MAKE A NEW ADDITION TO A PREVIOUSLY PURCHASED HUNTER SERIES 800 PLOTMASTER.