

Recognition  
SATB, organ (opt. brass, timpani)

Timothy C. Takach

pdf download - \$10.00

FULL SCORE AND PARTS

# Timothy C. Takach

## Recognition

for SATB choir, organ (opt. brass ensemble and timpani)

To the Chancel Choir, Gary R. Schwartzhoff, Director of Music,  
at the First Congregational United Church of Christ, Eau Claire, Wisconsin, Rev. Dr. Mark Pirazzini, minister



Timothy C Takach.com

## Text:

Sunday morning, here we are  
palms open, hearts ready  
all a part of god's body

all a voice in the choir  
in the exultation  
of our song.

Recognition is as simple  
as the lighting  
of a candle

one small flame  
and its soft glow  
all the proof

of your love  
of your presence  
that we need.

Solid as wood  
is your love's timber  
When we take the time

When we take a closer look  
we see ring after ring  
of love, circling,

reminding us of our history  
through the stories and the ages  
through the glory and the pain

you and love are always with us,  
you and joy,  
one and the same.

*- Julia Klatt Singer*

## Notes:

Julia's poem, written specifically for this piece, paints a beautiful picture of how we recognize. We recognize light, we recognize love. We recognize an individual deed just as we recognize the warmth of a community. We recognize that faith and love always surround us, and have surrounded us through the years.

*- Timothy C. Takach, 2015*



Reviewed as "gorgeous" (Washington Post) and "stunning" (Lawrence Journal-World), the music of Timothy C. Takach has risen rapidly in the concert world. Applauded for his melodic lines and rich, intriguing harmonies, Takach is a full-time composer and has received a number of commissions from various organizations including VocalEssence, the St. Olaf Band, Cantus, Pavia Winds, cellist Kirsten Whitson, The Singers – Minnesota Choral Artists, and the University of Notre Dame DeBartolo Performing Arts Center. His compositions have been performed on A Prairie Home Companion, The Boston Pops holiday tour, multiple All-State and festival programs and at venues such as the Library of Congress, Kennedy Center and Royal Opera House Muscat.

Takach has been awarded grants from the American Composers Forum, Metropolitan Regional Arts Council, the Minnesota State Arts Board and Meet the Composer, and yearly ASCAP awards since 2004. He studied Music Theory and Composition at St. Olaf College, Northfield, MN, where he graduated with honors. Takach lives in Minneapolis with his wife and two sons.

To the Chancel Choir, Gary R. Schwartzhoff, Director of Music,  
at the First Congregational United Church of Christ, Eau Claire, Wisconsin, Rev. Dr. Mark Pirazzini, minister

# Recognition

SATB, organ, (opt. brass ensemble, timpani)

Julia Klatt Singer

Timothy C. Takach (2015)

With honor ♩ = 104

Musical score for 'Recognition' in 6/8 time, key of G major. The score includes parts for Trumpet in B♭ 1, Trumpet in B♭ 2, Trombone 1, Trombone 2, Timpani, and Organ. The organ part is divided into two systems. The score features dynamic markings of *mp* and *mf*. A watermark 'Timothy C Takach.com' is visible across the middle of the score. A large watermark 'For perusal purposes only. Do not use, copy, or auction online.' is overlaid on the score.

Timothy C Takach.com

Copyright 2015. All Rights Reserved.

For more information and to purchase scores please email [tim@timothyctakach.com](mailto:tim@timothyctakach.com)

Recognition / Timothy C. Takach

5

B $\flat$  Tpt. 1

B $\flat$  Tpt. 2

Tbn. 1

Tbn. 2

S/A

T/B

Timp.

Org.

For perusal purposes only.  
Do not use, copy, or auction online.

*p*

*mp*

*mf*

Sun - day morn - ing, \_\_\_\_\_ here we are

Sun - day morn - ing, \_\_\_\_\_ here we are

Timothy C Takach.com

9

B $\flat$  Tpt. 1

B $\flat$  Tpt. 2

Tbn. 1

Tbn. 2

S/A

T/B

Timp.

Org.

For perusal purposes only.  
Do not use, copy, or auction online.

palms o - pen, hearts read - y all a part of god's bod - y

palms o - pen, hearts read - y all a part of god's bod - y

*p* *mp*

Recognition / Timothy C. Takach

13

B $\flat$  Tpt. 1  
*p* *mp*

B $\flat$  Tpt. 2  
*p* *mp*

Tbn. 1  
*p* *mp*

Tbn. 2  
*p* *mp*

For perusal purposes only.  
Do not use, copy, or auction online.

13

S/A  
all a voice in the choir in the ex - ul - ta - tion

T/B  
all a voice in the choir in the ex - ul - ta - tion

Timothy C. Takach.com

13

Timp.

13

Org.  
*p* *p*

For perusal purposes only.  
Do not use, copy, or auction online.

17

B $\flat$  Tpt. 1

Musical staff for B $\flat$  Tpt. 1, starting at measure 17. The staff is in treble clef with a key signature of one sharp (F#). It contains a whole rest in measure 17, followed by a series of eighth and quarter notes in measures 18 and 19, and a half note in measure 20. A dynamic marking of *f* is present in measure 19.

B $\flat$  Tpt. 2

Musical staff for B $\flat$  Tpt. 2, starting at measure 17. The staff is in treble clef with a key signature of one sharp (F#). It contains a series of eighth and quarter notes in measures 17, 18, and 19, and a half note in measure 20. Dynamic markings of *mf* and *f* are present.

Tbn. 1

Musical staff for Tbn. 1, starting at measure 17. The staff is in bass clef with a key signature of one flat (B $\flat$ ). It contains a series of eighth and quarter notes in measures 17, 18, and 19, and a half note in measure 20. A dynamic marking of *mf* is present.

Tbn. 2

Musical staff for Tbn. 2, starting at measure 17. The staff is in bass clef with a key signature of one flat (B $\flat$ ). It contains a whole rest in measure 17, followed by a series of eighth and quarter notes in measures 18 and 19, and a half note in measure 20. A dynamic marking of *f* is present.

S/A

Musical staff for S/A, starting at measure 17. The staff is in treble clef with a key signature of one flat (B $\flat$ ). It contains the lyrics "of our song." with notes in measures 17, 18, and 19, and a whole rest in measure 20. A dynamic marking of *f* is present.

T/B

Musical staff for T/B, starting at measure 17. The staff is in bass clef with a key signature of one flat (B $\flat$ ). It contains the lyrics "of our song." with notes in measures 17, 18, and 19, and a whole rest in measure 20. A dynamic marking of *f* is present.

Timp.

Musical staff for Timp., starting at measure 17. The staff is in bass clef with a key signature of one flat (B $\flat$ ). It contains a series of eighth and quarter notes in measures 17, 18, and 19, and a half note in measure 20. Dynamic markings of *mp* and *f* are present.

Org.

Musical staff for Org., starting at measure 17. The staff is in treble clef with a key signature of one flat (B $\flat$ ). It contains a series of eighth and quarter notes in measures 17, 18, and 19, and a half note in measure 20. A dynamic marking of *mp* is present.

**More motion** ♩ = 112

21

B $\flat$  Tpt. 1

Musical staff for B $\flat$  Tpt. 1, measures 21-24. The staff shows a melodic line starting with a half note G4, followed by quarter notes A4, B4, and C5. Dynamics include *p* and hairpins.

B $\flat$  Tpt. 2

Musical staff for B $\flat$  Tpt. 2, measures 21-24. The staff shows a melodic line starting with a half note G4, followed by quarter notes A4, B4, and C5. Dynamics include *p* and hairpins.

Tbn. 1

Musical staff for Tbn. 1, measures 21-24. The staff shows a melodic line starting with a half note G3, followed by quarter notes A3, B3, and C4. Dynamics include *p* and hairpins.

Tbn. 2

Musical staff for Tbn. 2, measures 21-24. The staff shows a melodic line starting with a half note G3, followed by quarter notes A3, B3, and C4. Dynamics include *p* and hairpins.

S/A

Musical staff for S/A, measures 21-24. The staff shows a vocal line with lyrics: "Rec-og - ni-tion is as sim-ple as the light - ing of a can - dle". Dynamics include *mf*.

T/B

Musical staff for T/B, measures 21-24. The staff shows a vocal line with lyrics: "Rec-og - ni-tion is as sim-ple as the light - ing of a can - dle". Dynamics include *mf*.

Timp.

Org.

Musical staff for Org., measures 21-24. The staff shows a piano accompaniment with chords and a melodic line. Dynamics include *mf*.



Recognition / Timothy C. Takach

25

B $\flat$  Tpt. 1

Musical staff for B $\flat$  Tpt. 1. The staff is in treble clef with a key signature of one sharp (F#). It begins with a whole rest followed by a quarter rest. A dynamic marking of *p* is placed below the first measure. The rest of the staff contains whole rests.

B $\flat$  Tpt. 2

Musical staff for B $\flat$  Tpt. 2. The staff is in treble clef with a key signature of one sharp (F#). It begins with a quarter rest, followed by a dotted quarter note, a half note, and another dotted quarter note, all beamed together. A dynamic marking of *p* is placed below the first measure. The rest of the staff contains whole rests.

Tbn. 1

Musical staff for Tbn. 1. The staff is in bass clef with a key signature of one flat (B $\flat$ ). It begins with a whole rest followed by a quarter rest. A dynamic marking of *p* is placed below the first measure. The rest of the staff contains whole rests.

Tbn. 2

Musical staff for Tbn. 2. The staff is in bass clef with a key signature of one flat (B $\flat$ ). It begins with a whole rest followed by a quarter rest. A dynamic marking of *p* is placed below the first measure. The rest of the staff contains whole rests.

For perusal purposes only.  
Do not use, copy, or auction online.

S/A

Musical staff for S/A. The staff is in treble clef with a key signature of one flat (B $\flat$ ). It contains a vocal line with lyrics: "one small flame and its soft glow all the proof of your love of your". The music starts with a dynamic marking of *p* and ends with a dynamic marking of *mp*.

T/B

Musical staff for T/B. The staff is in bass clef with a key signature of one flat (B $\flat$ ). It contains a vocal line with lyrics: "one small flame and its soft glow all the proof of your love of your". The music starts with a dynamic marking of *p* and ends with a dynamic marking of *mp*.

25

Timp.

Musical staff for Timp. The staff is in bass clef with a key signature of one flat (B $\flat$ ). It contains whole rests throughout the entire staff.

Org.

Musical staff for Org. (top part). The staff is in treble clef with a key signature of one flat (B $\flat$ ). It contains a piano accompaniment line with lyrics: "one small flame and its soft glow all the proof of your love of your". The music starts with a dynamic marking of *p* and includes the instruction *cresc. poco a poco*.

Musical staff for Org. (middle part). The staff is in bass clef with a key signature of one flat (B $\flat$ ). It contains a piano accompaniment line with lyrics: "one small flame and its soft glow all the proof of your love of your".

Musical staff for Org. (bottom part). The staff is in bass clef with a key signature of one flat (B $\flat$ ). It contains a piano accompaniment line with lyrics: "one small flame and its soft glow all the proof of your love of your".

For perusal purposes only.  
Do not use, copy, or auction online.

Recognition / Timothy C. Takach

*ritard* ..... **Tempo I** ♩ = 104

29

B $\flat$  Tpt. 1

Musical staff for B $\flat$  Tpt. 1. The staff is in treble clef with a key signature of one sharp (F#). It contains rests for the first two measures, followed by a melodic line starting in the third measure with a forte (*f*) dynamic marking.

B $\flat$  Tpt. 2

Musical staff for B $\flat$  Tpt. 2. The staff is in treble clef with a key signature of one sharp (F#). It contains rests for the first two measures, followed by a melodic line starting in the third measure with a forte (*f*) dynamic marking.

Tbn. 1

Musical staff for Tbn. 1. The staff is in bass clef with a key signature of one flat (B $\flat$ ). It contains rests for all four measures.

Tbn. 2

Musical staff for Tbn. 2. The staff is in bass clef with a key signature of one flat (B $\flat$ ). It contains rests for all four measures.

For perusal purposes only.  
Do not use, copy, or auction online.

S/A

Musical staff for S/A. The staff is in treble clef with a key signature of one flat (B $\flat$ ). It contains vocal notes with lyrics: "pres-ence that we need." The notes are marked with a forte (*f*) dynamic.

T/B

Musical staff for T/B. The staff is in bass clef with a key signature of one flat (B $\flat$ ). It contains vocal notes with lyrics: "pres-ence that we need." The notes are marked with a forte (*f*) dynamic. A watermark "Timothy C Takach.com" is visible over the staff.

Timp.

Musical staff for Timp. The staff is in bass clef with a key signature of one flat (B $\flat$ ). It contains rests for the first two measures, followed by a rhythmic pattern in the third and fourth measures marked with a forte (*f*) dynamic.

Org.

Musical staff for Org. The staff is in treble clef with a key signature of one flat (B $\flat$ ). It contains chords and melodic lines. A watermark "For perusal purposes only. Do not use, copy, or auction online." is visible over the staff.

33

B $\flat$  Tpt. 1

Musical staff for B $\flat$  Tpt. 1, starting at measure 33. The staff contains a melodic line with a dynamic marking of *mf* and a crescendo hairpin.

B $\flat$  Tpt. 2

Musical staff for B $\flat$  Tpt. 2, starting at measure 33. The staff contains a melodic line with a dynamic marking of *mf* and a crescendo hairpin.

Tbn. 1

Musical staff for Tbn. 1, starting at measure 33. The staff contains a melodic line with dynamic markings of *f* and *mf*.

Tbn. 2

Musical staff for Tbn. 2, starting at measure 33. The staff contains a melodic line with dynamic markings of *f* and *mf*.

S/A

Musical staff for S/A, starting at measure 33. The staff contains a vocal line with lyrics: "Sol - id as wood is your love's tim-ber". The dynamic marking is *f strong*.

T/B

Musical staff for T/B, starting at measure 33. The staff contains a vocal line with lyrics: "Sol - id as wood is your love's tim-ber". The dynamic marking is *f strong*.

Timp.

Musical staff for Timp., starting at measure 33. The staff contains a rhythmic line with dynamic markings of *mf* and *p*.

Org.

Musical staff for Org., starting at measure 33. The staff contains a keyboard accompaniment with a dynamic marking of *mf*.

For perusal purposes only.

Do not use, copy, or auction online.

Timothy C Takach.com

For perusal purposes only.

Do not use, copy, or auction online.

37

B $\flat$  Tpt. 1

Musical staff for B $\flat$  Tpt. 1, starting at measure 37. The staff contains a melodic line with a dynamic marking of *mp*.

B $\flat$  Tpt. 2

Musical staff for B $\flat$  Tpt. 2, starting at measure 37. The staff contains a melodic line.

Tbn. 1

Musical staff for Tbn. 1, starting at measure 37. The staff contains a melodic line with a dynamic marking of *mp*.

Tbn. 2

Musical staff for Tbn. 2, starting at measure 37. The staff contains a melodic line with a dynamic marking of *mp*.

S/A

Musical staff for S/A, starting at measure 37. The staff contains a vocal line with lyrics: "When we take the time. When we take a clos - er look we see". Dynamic markings include *mf* and *warmly*.

T/B

Musical staff for T/B, starting at measure 37. The staff contains a vocal line with lyrics: "When we take the time. When we take a clos - er look we see". Dynamic markings include *mf* and *warmly*. A watermark "Timothy C. Takach.com" is visible across the staff.

Timp.

Musical staff for Timp., starting at measure 37. The staff contains a rhythmic line with a dynamic marking of *mf*.

Org.

Musical staff for Org., starting at measure 37. The staff contains a piano accompaniment with a dynamic marking of *mf*. A watermark "Timothy C. Takach.com" is visible across the staff.

Recognition / Timothy C. Takach

41

B $\flat$  Tpt. 1

Musical staff for B $\flat$  Tpt. 1, measures 41-44. The staff contains a melodic line with a dynamic marking of *mf* at the beginning.

B $\flat$  Tpt. 2

Musical staff for B $\flat$  Tpt. 2, measures 41-44. The staff contains a melodic line with a dynamic marking of *mf* at the beginning.

Tbn. 1

Musical staff for Tbn. 1, measures 41-44. The staff contains a melodic line with a dynamic marking of *mf* at the beginning.

Tbn. 2

Musical staff for Tbn. 2, measures 41-44. The staff contains a melodic line with a dynamic marking of *mf* at the beginning.

S/A

Musical staff for S/A, measures 41-44. The staff contains a vocal line with lyrics: "ring af - ter ring of love, cir - cl - ing, re - mind - ing us of our". Dynamic markings include *f* and *mf*.

T/B

Musical staff for T/B, measures 41-44. The staff contains a vocal line with lyrics: "ring af - ter ring of love, cir - cl - ing, re - mind - ing us of our". Dynamic markings include *f* and *mf*.

Timp.

Musical staff for Timp., measures 41-44. The staff contains a drum line with rests.

Org.

Musical staff for Org., measures 41-44. The staff contains a piano accompaniment with a dynamic marking of *mp* at the end.

Musical staff for Bass, measures 41-44. The staff contains a bass line.

45

B $\flat$  Tpt. 1 *mp* *mf*

B $\flat$  Tpt. 2 *mf*

Tbn. 1 *mf*

Tbn. 2 *mf*

For perusal purposes only.  
Do not use, copy, or auction online.

45

S/A  
his - to - ry through the sto - ries and the ag - es through the glo - ry and the

T/B  
his - to - ry through the sto - ries and the ag - es through the glo - ry and the

Timothy C. Takach.com

45

Timp. *mf*

45

Org. *mf*

For perusal purposes only.  
Do not use, copy, or auction online.

Recognition / Timothy C. Takach

49 *ritard*  $\text{♩} = 100$

B♭ Tpt. 1

B♭ Tpt. 2

Tbn. 1

Tbn. 2

*f*

*f*

*f*

*f*

*p*

For perusal purposes only.  
Do not use, copy, or auction online.

S/A

T/B

*f*

*f*

*mp*

*mp*

pain

pain

you and love are

you and love are

Timothy C Takach.com

Timp.

49

*l.v.*

*ff*

Org.

49

*ff*

*p*

For perusal purposes only.  
Do not use, copy, or auction online.

Recognition / Timothy C. Takach

53

*molto ritard.*

B $\flat$  Tpt. 1

Musical staff for B $\flat$  Tpt. 1, measures 53-55. The staff contains notes with a dynamic marking of *p* and a hairpin crescendo.

B $\flat$  Tpt. 2

Musical staff for B $\flat$  Tpt. 2, measures 53-55. The staff contains notes with a dynamic marking of *p*.

Tbn. 1

Musical staff for Tbn. 1, measures 53-55. The staff contains notes with a dynamic marking of *p*.

Tbn. 2

Musical staff for Tbn. 2, measures 53-55. The staff contains notes with a dynamic marking of *p*.

For perusal purposes only.

Do not use, copy, or auction online.

S/A

Musical staff for S/A, measures 53-55. The staff contains notes with a dynamic marking of *p*.

al - ways with us, you and joy, one and the same.

T/B

Musical staff for T/B, measures 53-55. The staff contains notes with a dynamic marking of *p*.

al - ways with us, you and joy, one and the same.

Timothy C Takach.com

Timp.

Musical staff for Timp., measures 53-55. The staff contains rests.

Org.

Musical staff for Org., measures 53-55. The staff contains chords and notes.

For perusal purposes only.

Do not use, copy, or auction online.



To the Chancel Choir, Gary R. Schwartzhoff, Director of Music,  
at the First Congregational United Church of Christ, Eau Claire, Wisconsin, Rev. Dr. Mark Pirazzini, minister

Trumpet in B♭ 1

# Recognition

SATB, organ, (opt. brass ensemble, timpani)

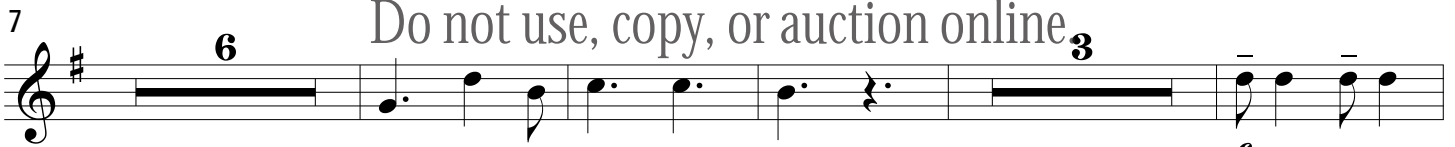
Julia Klatt Singer

Timothy C. Takach (2015)

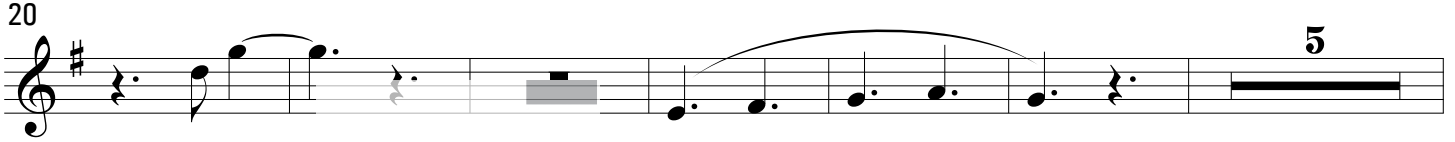
With honor ♩ = 104



For perusal purposes only.

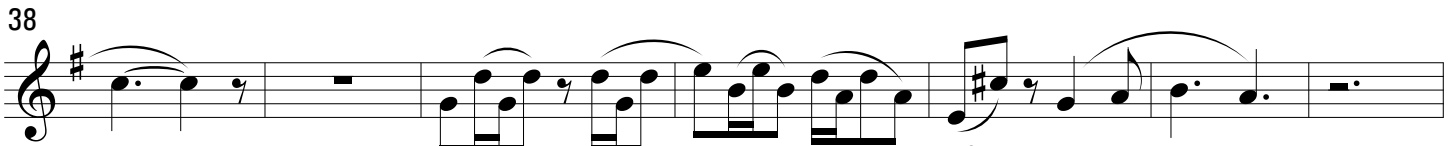


More motion ♩ = 112

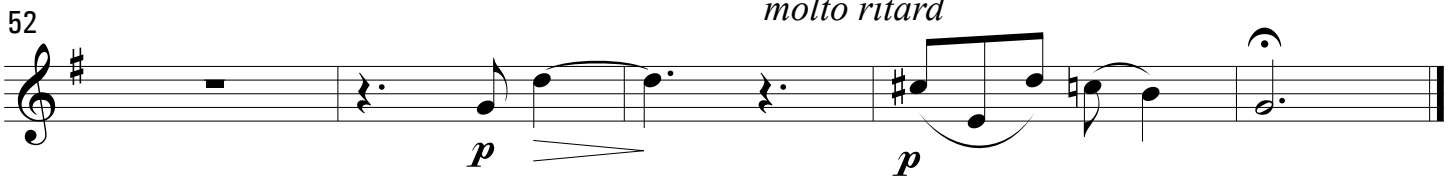
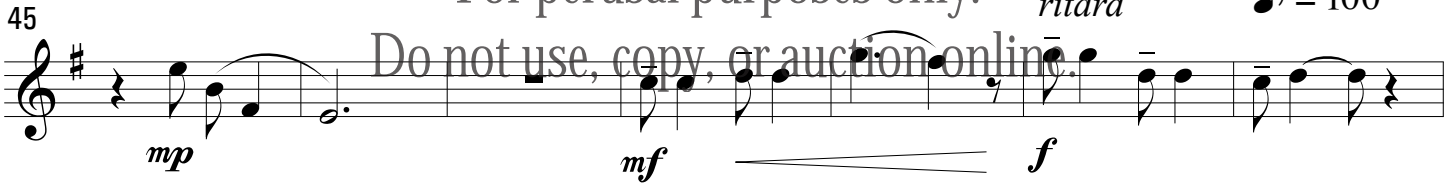


Tempo I ♩ = 104

Timothy C Takach.com



For perusal purposes only.



Timothy C Takach.com

Copyright 2015. All Rights Reserved.

For more information and to purchase scores please email [tim@timothyctakach.com](mailto:tim@timothyctakach.com)

To the Chancel Choir, Gary R. Schwartzhoff, Director of Music,  
at the First Congregational United Church of Christ, Eau Claire, Wisconsin, Rev. Dr. Mark Pirazzini, minister

Trumpet in B $\flat$  2

# Recognition

SATB, organ, (opt. brass ensemble, timpani)

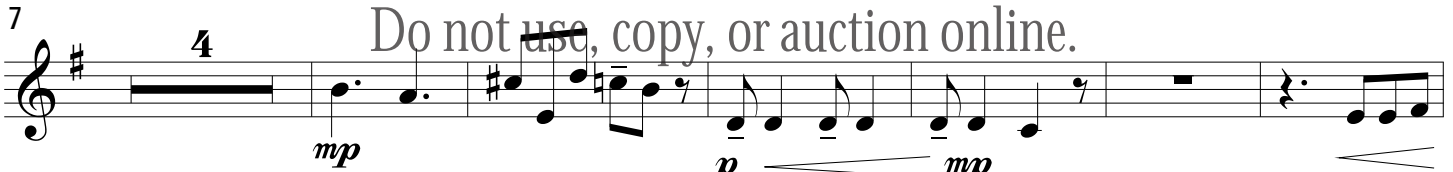
Julia Klatt Singer

Timothy C. Takach (2015)

With honor  $\text{♩} = 104$



For perusal purposes only.

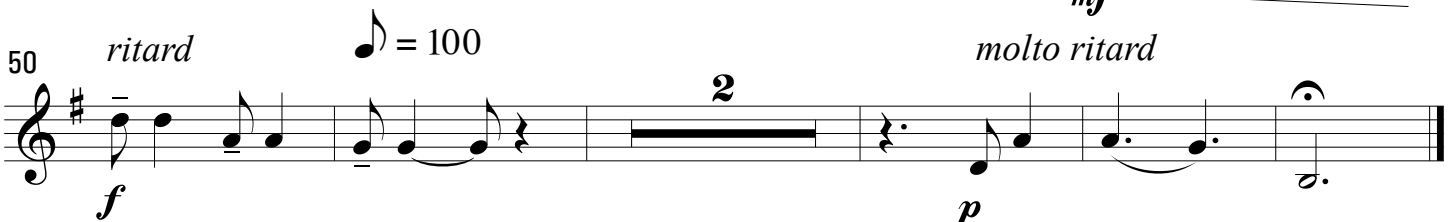
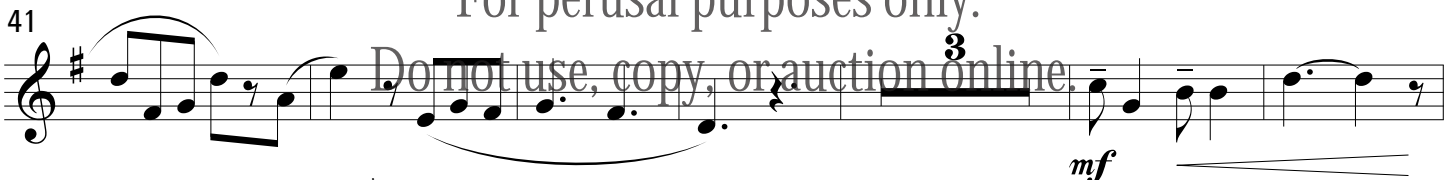


Do not use, copy, or auction online.

More motion  $\text{♩} = 112$



For perusal purposes only.



Timothy C Takach.com

Copyright 2015. All Rights Reserved.  
For more information and to purchase scores please email [tim@timothyctakach.com](mailto:tim@timothyctakach.com)

To the Chancel Choir, Gary R. Schwartzhoff, Director of Music,  
at the First Congregational United Church of Christ, Eau Claire, Wisconsin, Rev. Dr. Mark Pirazzini, minister

Trombone 1

# Recognition

SATB, organ, (opt. brass ensemble, timpani)

Julia Klatt Singer

Timothy C. Takach (2015)

With honor ♩ = 104

For perusal purposes only.  
Do not use, copy, or auction online.

mp

p

mp

p

mp

mf

f

More motion ♩ = 112

Tempo I ♩ = 104

mf

f

p

molto ritard

Timothy C Takach.com

Copyright 2015. All Rights Reserved.

For more information and to purchase scores please email [tim@timothyctakach.com](mailto:tim@timothyctakach.com)

To the Chancel Choir, Gary R. Schwartzhoff, Director of Music,  
at the First Congregational United Church of Christ, Eau Claire, Wisconsin, Rev. Dr. Mark Pirazzini, minister

Trombone 2

# Recognition

SATB, organ, (opt. brass ensemble, timpani)

Julia Klatt Singer

Timothy C. Takach (2015)

With honor ♩ = 104

7 *mp* *mp* *p* *mp*

15 *f*

20 *p* *p*

31 **Tempo I** ♩ = 104  
*f* *mf* *mp*

41 *mf* *f* *p*

48 *mf* *f* *p*

Timothy C Takach.com

Copyright 2015. All Rights Reserved.

For more information and to purchase scores please email [tim@timothyctakach.com](mailto:tim@timothyctakach.com)

To the Chancel Choir, Gary R. Schwartzhoff, Director of Music,  
at the First Congregational United Church of Christ, Eau Claire, Wisconsin, Rev. Dr. Mark Pirazzini, minister

Timpani

# Recognition

SATB, organ, (opt. brass ensemble, timpani)

Julia Klatt Singer

Timothy C. Takach (2015)

With honor ♩ = 104

12

Do not use, copy, or auction online.

17

*mp* *f*

More motion ♩ = 112

Tempo I ♩ = 104

21

10 *f*

33

*mf* *p* *mf*

38

7 *mf*

49

*ritard*  
l.v. ♩ = 100  
*ff* 6

Timothy C Takach.com

Copyright 2015. All Rights Reserved.

For more information and to purchase scores please email [tim@timothyctakach.com](mailto:tim@timothyctakach.com)

## Selected vocal works by Timothy C. Takach:

Mixed Voices	A Depth We Cannot Sound		SATB, vibraphone, marimba, large tom
	A Worshipper and a Man		SATB a cappella
	All the Beautiful Names		SATB a cappella
	All Sisters and Brothers		SATB, 2 trumpets, organ
	And I Saw		SATB div. a cappella
	As the Sunflower Turns on Her God		SSAATBB div, Sop. solo, SSATB soli, a cappella
	The Darkling Thrush	(earthsongs)	SATB, SAT soli, a cappella
	Epitaph		SATB, viola
	I Leave, She Stays		SATB a cappella
	Listen to the Apples		SATB div. a cappella
	Neither Angels, Nor Demons, Nor Powers	(Graphite Publishing)	SSATBB a cappella
	Nubes Oriebatur: the eruption of Vesuvius		SSATBB a cappella
	One Boy Told Me		SATB, piano
	Something There is Immortal		SSATBB a cappella
	Su Rahva Koda (The House of Your Kindred)		SSAATTBB a cappella
	This Alien Landscape		SATB, crotales, suspended cymbal, bass drum
	'Twas in the Moon of Wintertime (arr. Huron Carol)	(Graphite Publishing)	SATB a cappella
	We Are Lost, We Are Lucky		SATB, piano
	We Sing of Home (Finlandia)		SATB a cappella
Treble Voices	And I Saw		SSAA div. a cappella
	Cassiopeia		SSA a cappella
	Goodbye, Then		SSAv choir, Bb clarinet, piano
	Home on the Range (arr. American Folk Song)	(Graphite Publishing)	2-part treble voices, piano
	Queen of the Range	(Graphite Publishing)	SA choir, piano
	Serenade	(Graphite Publishing)	SSAA a cappella
	She Moved Through the Fair (arr. Irish Ballad)		SSAA a cappella
The Streets of Laredo (arr. American Folk Song)	(Graphite Publishing)	Unison, TTB, piano	
Twenty Questions		2- part treble, piano	
Men's Voices	And Her Smoke Rose Up Forever		TTTBB a cappella
	Empty		TB (opt. div), piano, opt. djembe
	Go		TB, hand drum, wood block or clapping
	Goodbye, Then		TBB choir, Bb clarinet, piano
	I Will Howl		TBB choir, piano or cello
	Johnny Come Down to Hilo (Traditional Sea Shanty)		TTBB a cappella
	It Is Not the Fact That I Will Die That I Mind		TB, piano
	Luceat Eis		TTTBB a cappella
	Mad		TBB, piano
	Original Harmony		TTBB a cappella
	Rough Beast		TTBB, percussion
	Salve Regina	(Graphite Publishing)	TBB semi-chorus, TTBB chorus a cappella
	She Moved Through the Fair (arr. Irish Ballad)	(Neil A. Kjos Music Co.)	TBB a cappella
	Things I Didn't Know I Loved	(Graphite Publishing)	TTBB a cappella
	'Twas in the Moon of Wintertime (arr. Huron Carol)	(Graphite Publishing)	TTBB a cappella
	Veni Creator Spiritus	(Graphite Publishing)	TTBB a cappella
We Made a Grave For Him		TTBB a cappella	
What I Have Done (arr. Amazing Grace/House of the Rising Sun)		TTTTBB a cappella	
Large Works	We Made a Grave For Him, And Her Smoke Rose Up Forever (ca. 10')		TTBB a cappella
	The Longest Nights (ca. 21')		SATB, piano or string quartet
	Where Beauty Comes From (ca. 16')		TBB, 2-part, SSAA, SATB; piano