

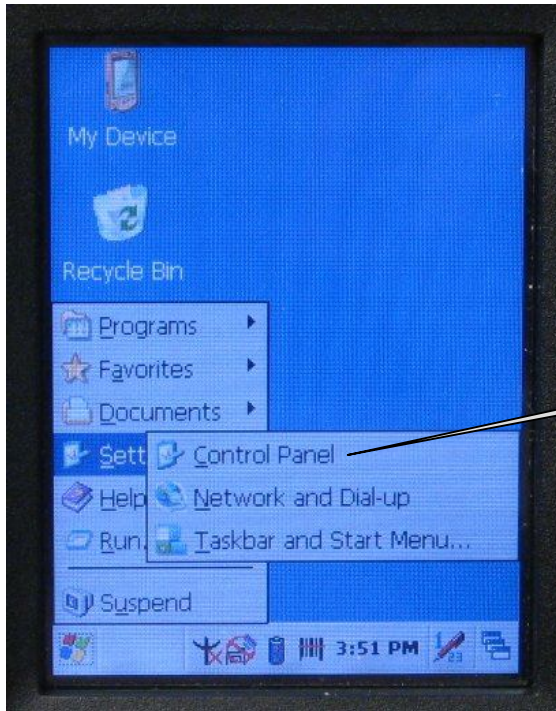


# Opticon 7214 Configuration



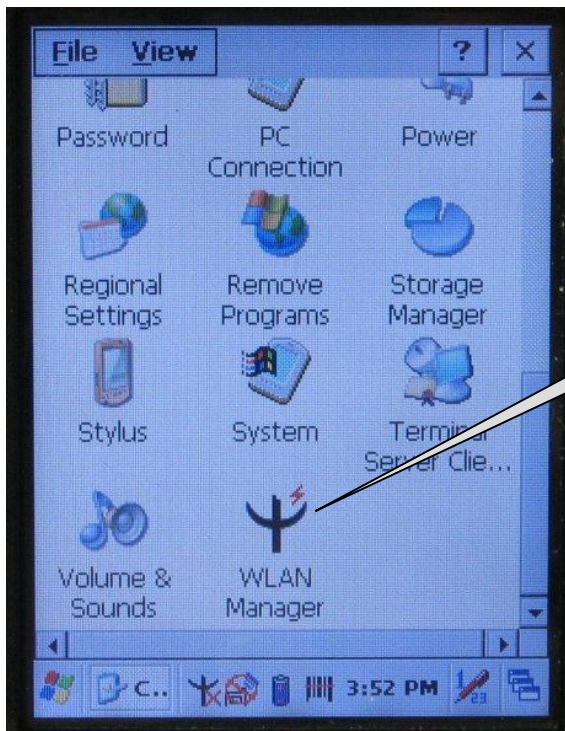
## **Configure Opticon 7214 handheld**

1. Select > Start > Settings > Control Panel



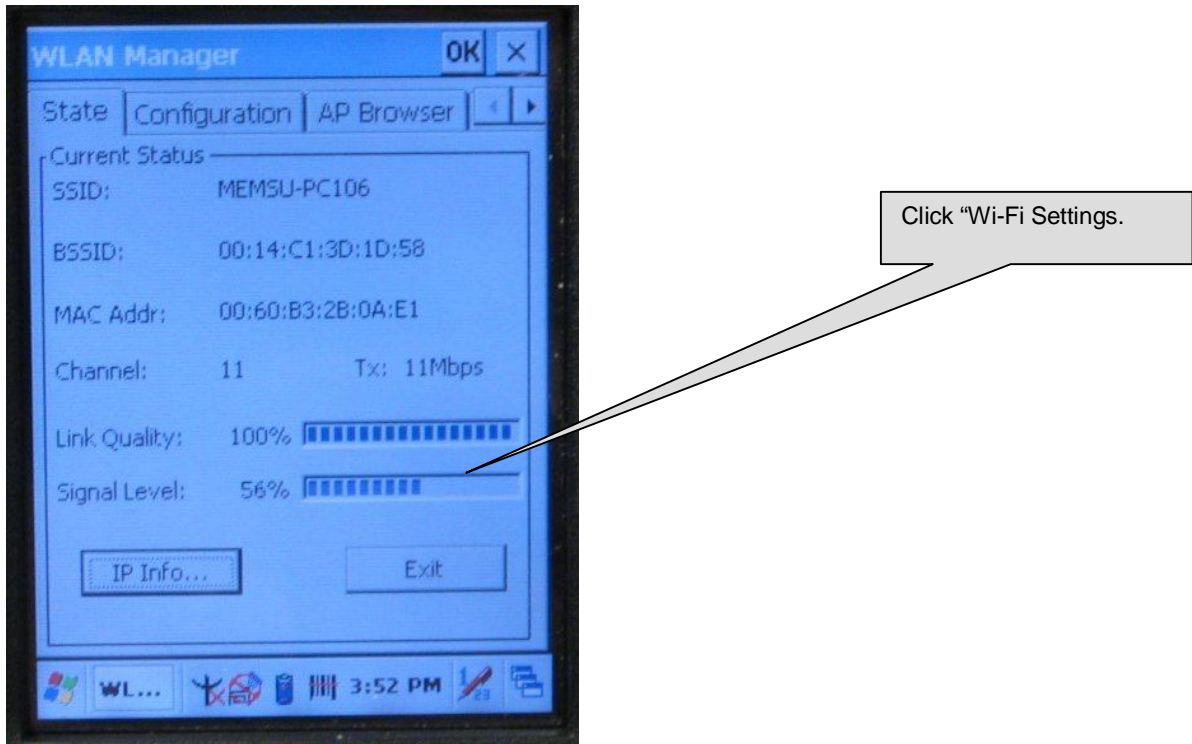
Select "Control Panel".

2. Select the WLAN Manager icon to configure.

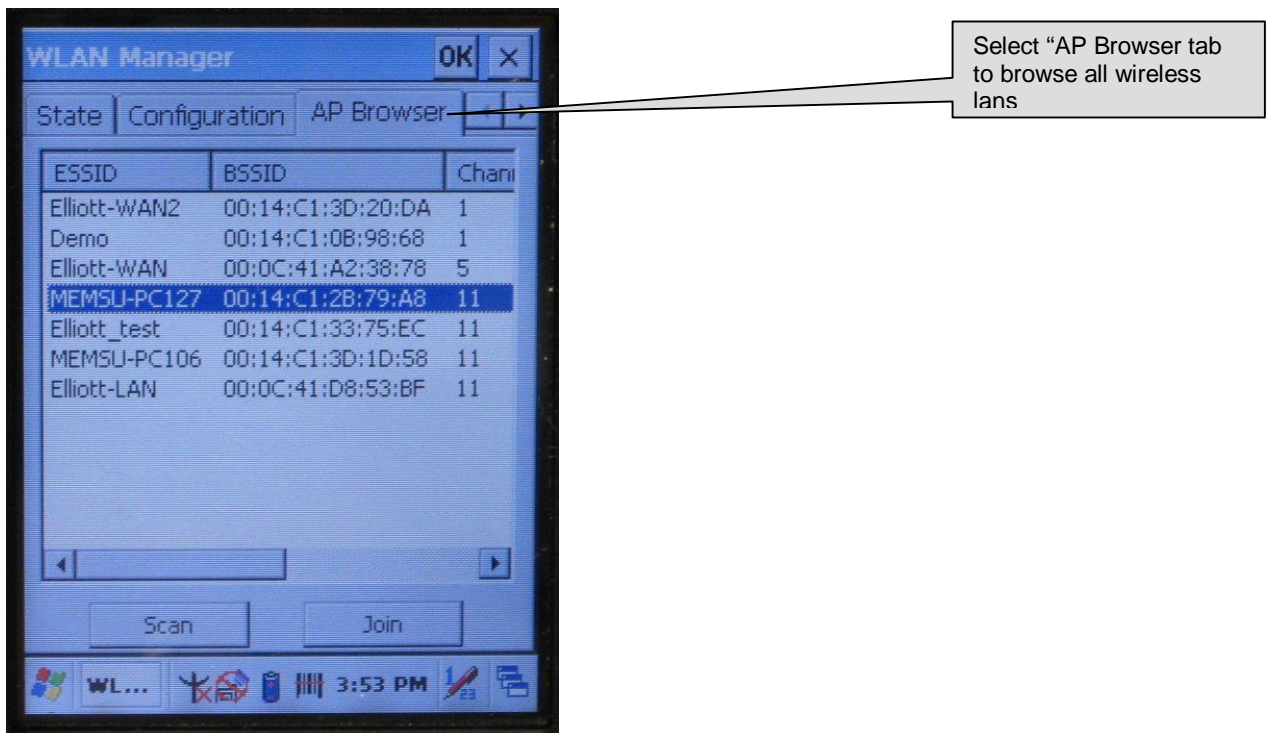


Double click the WLAN Manager icon.

3. First tab of WLAN Manager.

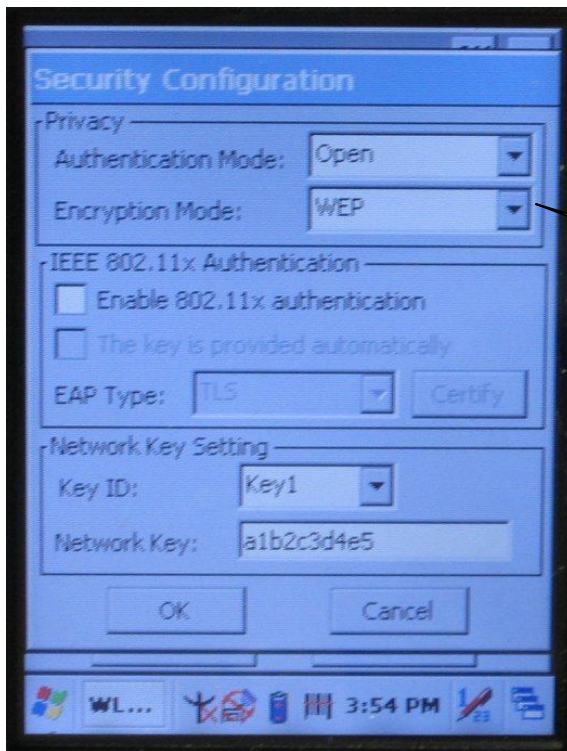


4. Select the "AP Browser"



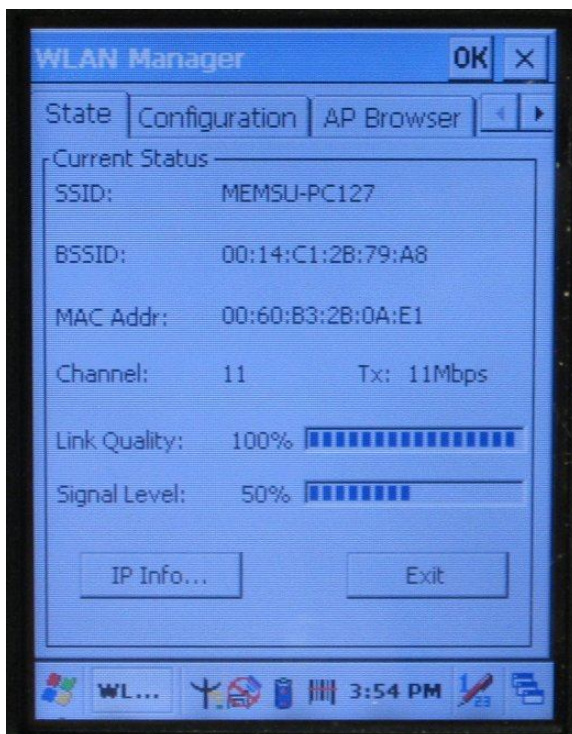


5. Set Authentication to: WEP: Open – Network key: a1b2c3d4e5

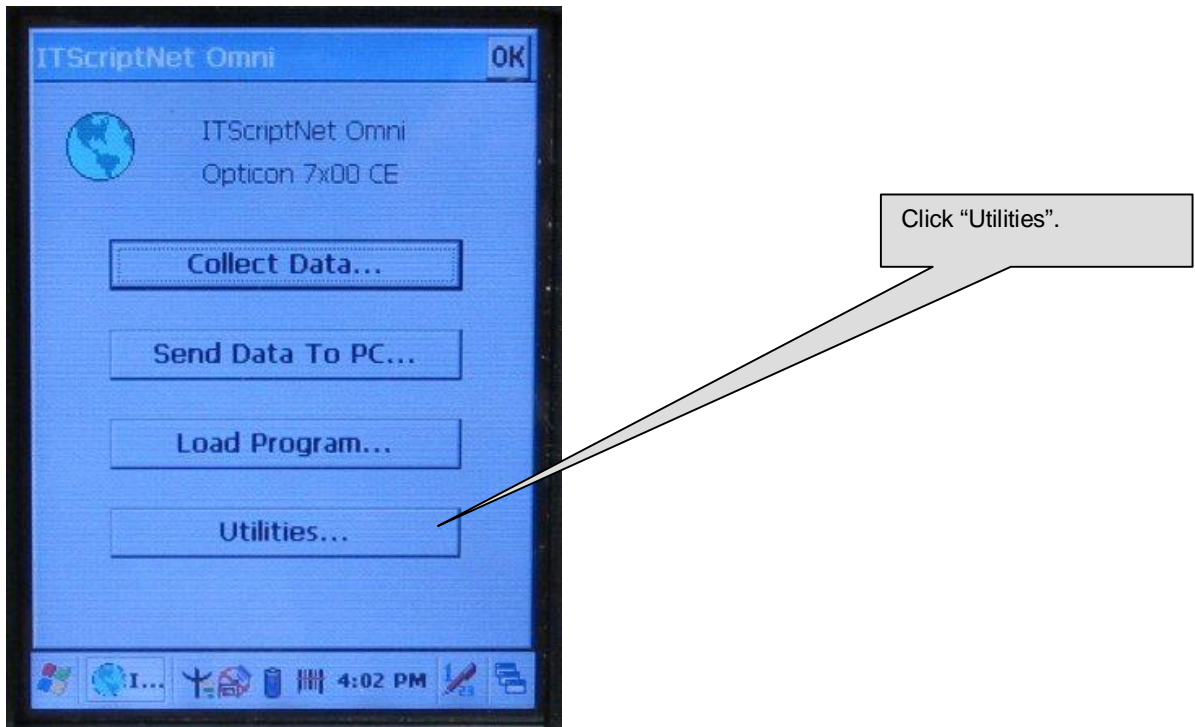


WEP: Open  
Key: a1b2c3d4e5  
>OK

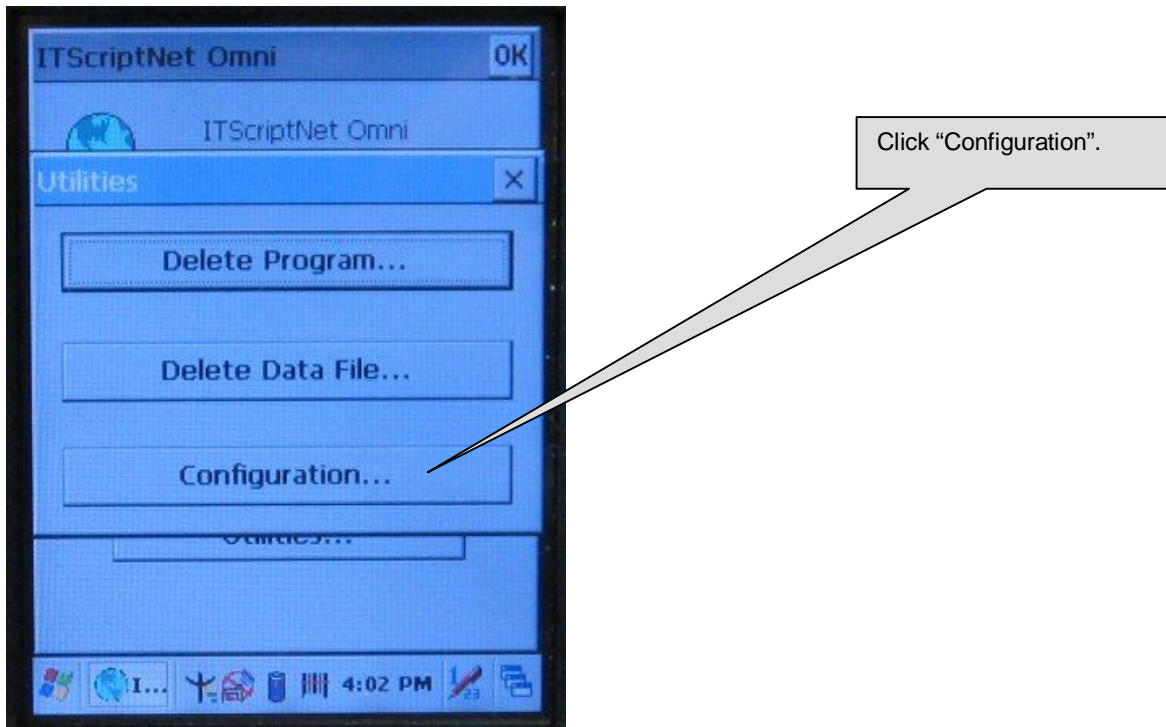
6. This screen shows you connected to your wireless network.



7. Start "ITScriptNet Omni" and click "Utilities".



8. Select "Configuration".



9. Configure the "Terminal Alias" (handheld name) and "Serial Port : Omni Server



10. Click the "Server" tab and configure the "Host IP" to the IP address of the PC running Omni Server

