



IDPIX 1000

PROFESSIONAL

User Guide

Version 1.1.8



Prepared By:
Elliott Data Systems, Inc.

17825 Edison Ave
Chesterfield, MO 63005
(636) 386-8400
Fax (636) 386-3072

Customer Service Support
1-888-345-8511

mobilesolutions@elliottdata.com
www.elliottmobilesolutions.com

Table of Contents

- Installing IDPix 1.1.6 5
- Configuring IDPix 1000 Professional..... 6
 - Approved Cameras..... 6
 - Setting IDPix 1000 Professional Settings 6
 - Configuring Camera Specific Settings 8
 - Microsoft LifeCam Cinema 9
 - Videology Camera..... 9
 - Videology Camera with Flash10
 - Installing Videology 5 MegaPixel Camera Drivers11**
 - Configuring IDPix to Use Videology 5 MegaPixel Camera14**
 - Valcam (AutoCam)17
 - Valcam (AutoCam) Inside of IDPix18
- Configuring IDPix Inside Third Party Software19
 - Datacard ID Centre.....19
- Mobile Solutions Preferences and Settings20
 - Elliott Data Mobile Solutions (EEMS).....20
 - Elliott Data Mobile Solutions (Mobile ID 1.0)20
- Licensing IDPix22
- Using IDPix23
 - Basic Capturing23
 - Manual Cropping of Captured Photo25
 - Adjusting the Brightness of Captured Photo26
- Accessing Help from within IDPix.....27

Notice:

Elliott Data Systems Inc. reserves the right to make improvements or changes in the products described in this manual at any time without notice.

While reasonable efforts have been made in the preparation of this document to insure its accuracy, Elliott Data assumes no liability resulting from any errors or omissions in this document, or from the use of information contained herein.

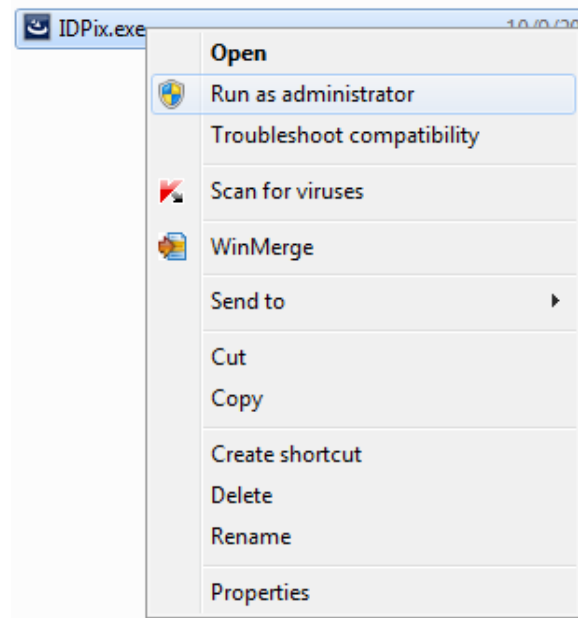
Copyright Notice:

This manual is copyrighted. All rights reserved. This manual may be printed for use by licensed IDPix/IDPix 1000 users only. This manual may not be reproduced for distribution outside a licensed site.

Copyright © 2011 Elliott Data Systems Inc.

Installing IDPix 1.1.6

1. Locate the installation file, **IDPix.exe** version 1.1.6 and **Run As Administrator**.



2. Click **Next** and accept all prompts.



Configuring IDPix 1000 Professional

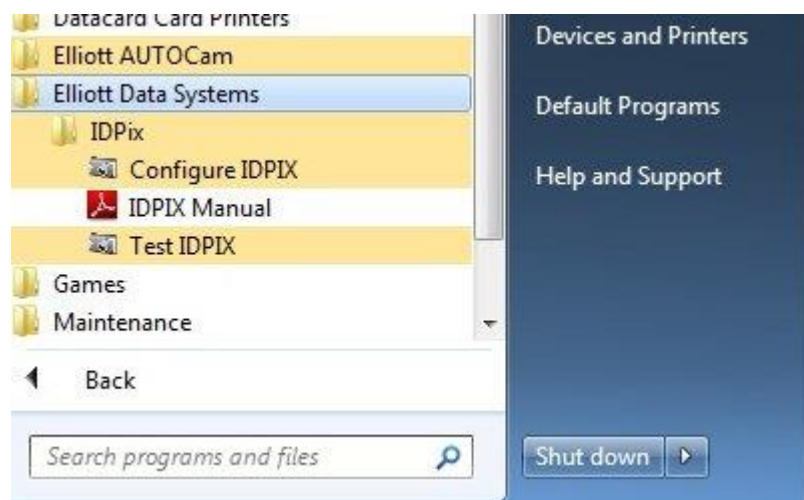
Approved Cameras

The IDPix 1000 Professional software has been approved to work with the following cameras:

- ValCam (Model: ISG-Z100)
- Videology (24C7.38USB-L8)
- Videology with Flash (24C7.38USB-F-L8)
- Videology with Flash 5mp (24C708AF)
- Microsoft LifeCam Cinema

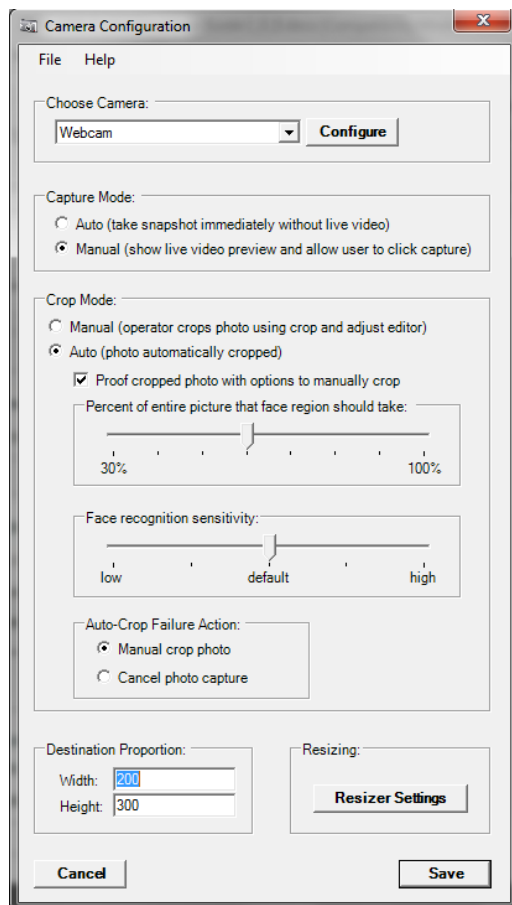
Setting IDPix 1000 Professional Settings

From the **START** menu select **All Programs, Elliott Data Systems, IDPix**, configure **IDPIX**.



Select the camera from the dropdown list.

Select [Configure](#)



Camera Configuration Settings:

- Choose Camera – specifies which type of camera IDPix will use to take photos.
- Capture Mode – specifies whether a live preview will be shown before photo is captured.
- Crop Mode – specifies whether the subject will be automatically cropped from the picture.
- Proof Cropped Photo - specifies after auto cropping whether a window showing the cropped photo will be displayed before the photo is returned to the 3rd party application.
- Percent of Entire Picture that Face Region should take – specifies how tight the auto crop feature will crop to face.
- Auto-Crop Failure Action – specifies what action to take if the auto crop feature cannot recognize a face with the camera feed.
- Destination Proportions – specifies the aspect ratio for the captured photo.

When you have completed making the desired camera settings, click [Save](#).

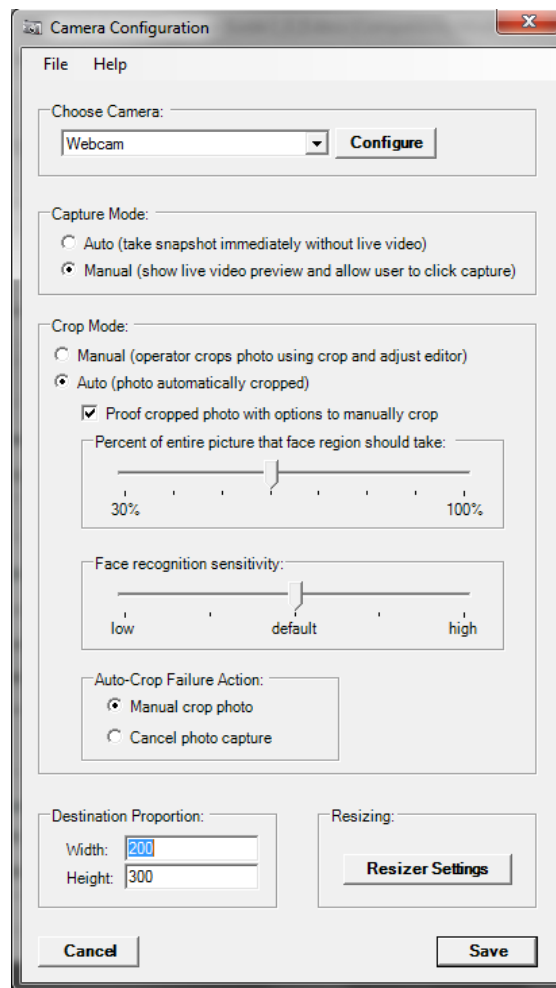
Configuring Camera Specific Settings

Some of the approved cameras have settings that apply only to one camera.

Access settings that apply to all cameras from the Live Preview window click the [File](#) menu then click [Configure](#) or from the **START** menu select **All Programs, Elliott Data Systems, IDPix**, configure **IDPix**.

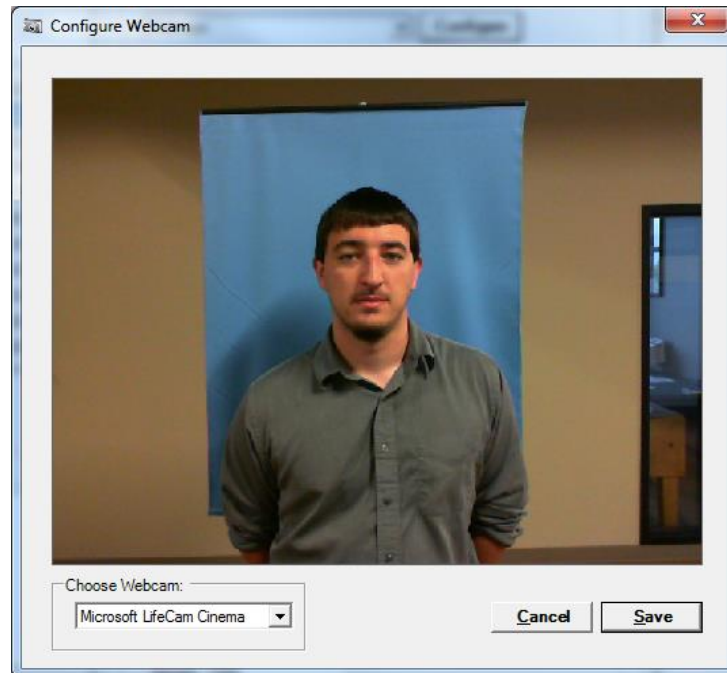
Select the camera from the dropdown in the Choose Camera section.

To the right of the Choose Camera section click [Configure](#).

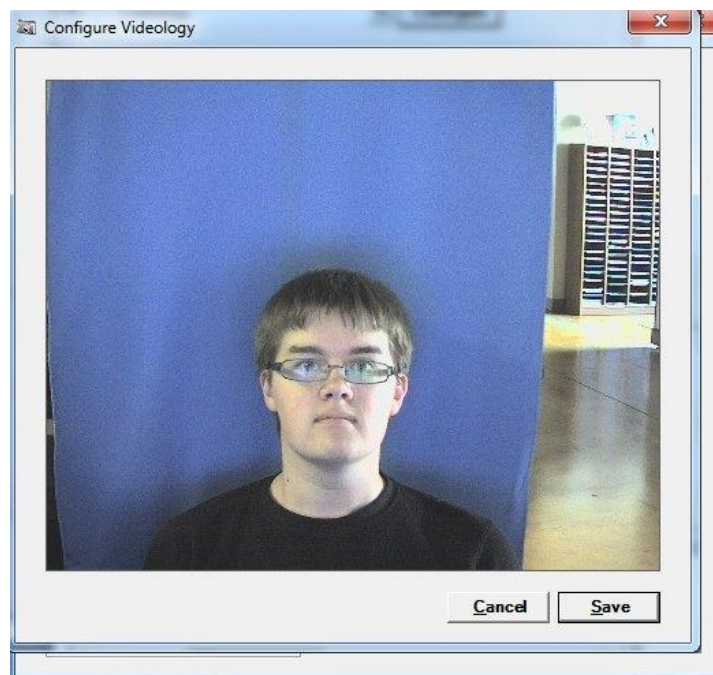


Each camera will have its own specific settings. Below is the configuration screen for the cameras.

Microsoft LifeCam Cinema



Videology Camera

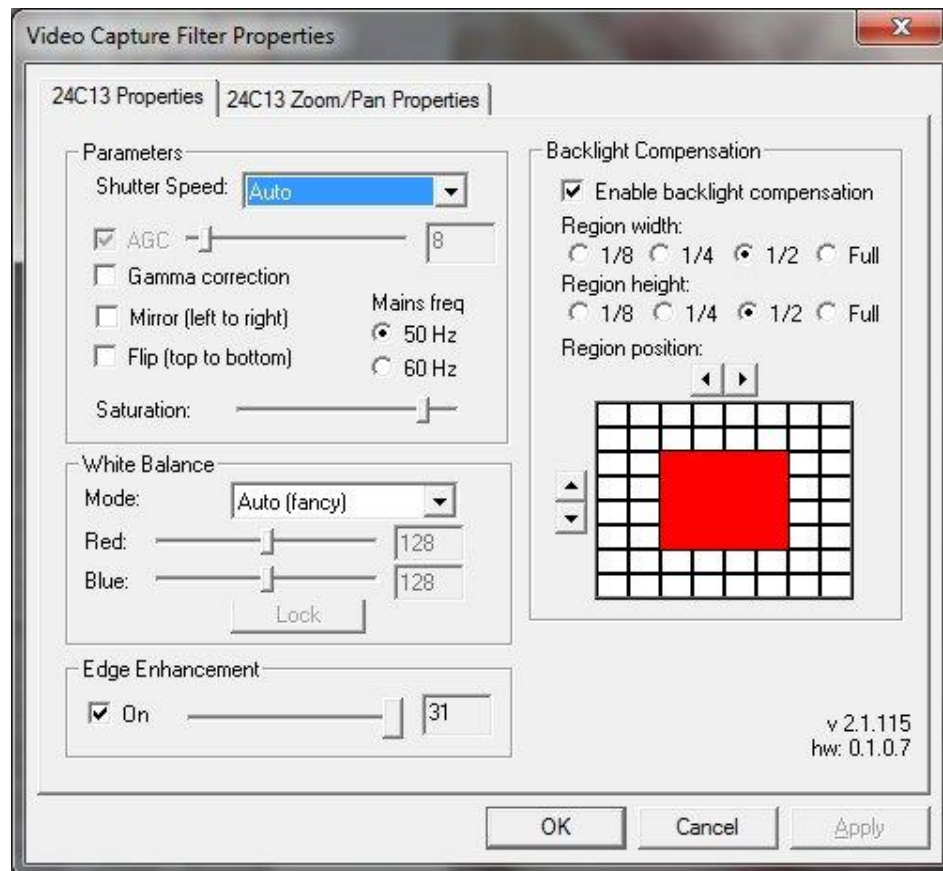


When you have completed configuring camera settings, click [Save](#).

Videology Camera with Flash

Go to **Start, Programs** and open the **Videology Viewer** software.

Select the **Camera Settings** from the dropdown. You should see the following screen.



Depending on the light in the room, you may have to adjust the **Backlight Compensation** area to read from $\frac{1}{2}$ to full. Select **Apply** and **OK** to exit.

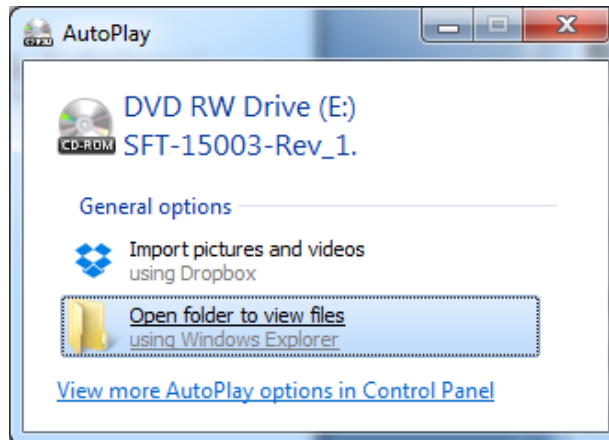
Setup and Tips for the Videology are found on the Videology driver CD.

There is a flash intensity knob on the side of the camera. Turn the lens to focus the camera.

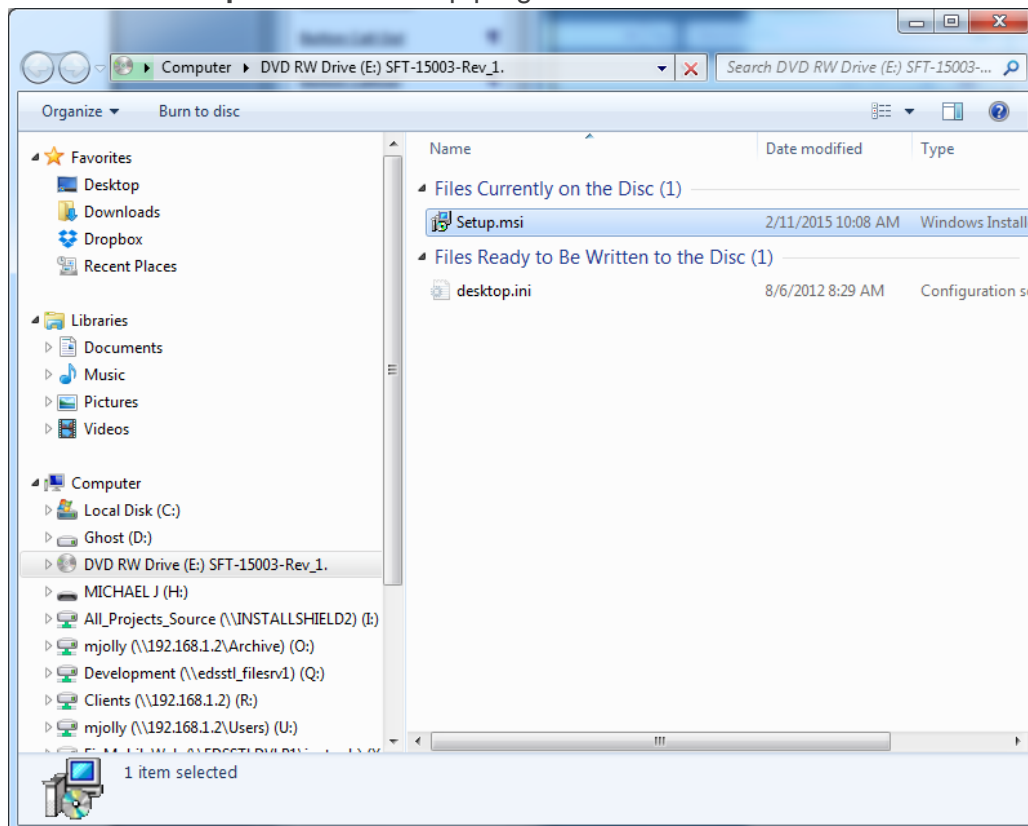
***Tip:** If you run into any issues with the Videology camera, you can do a factory reset inside of the Viewer software. You will then unplug the camera and plug it back in.*

Installing Videology 5 MegaPixel Camera Drivers

1. Insert Videology CD that came with the Videology 5MP camera.
2. When **AutoPlay** comes up, click **Open folder to view files**.



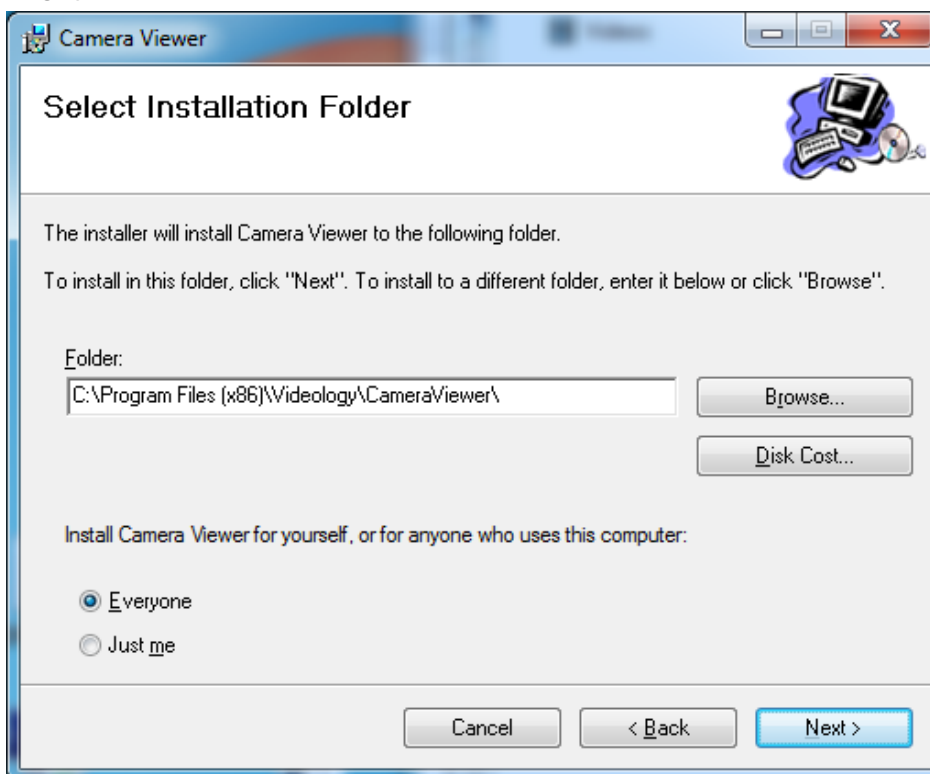
3. Double-click **Setup.msi** to run setup program.



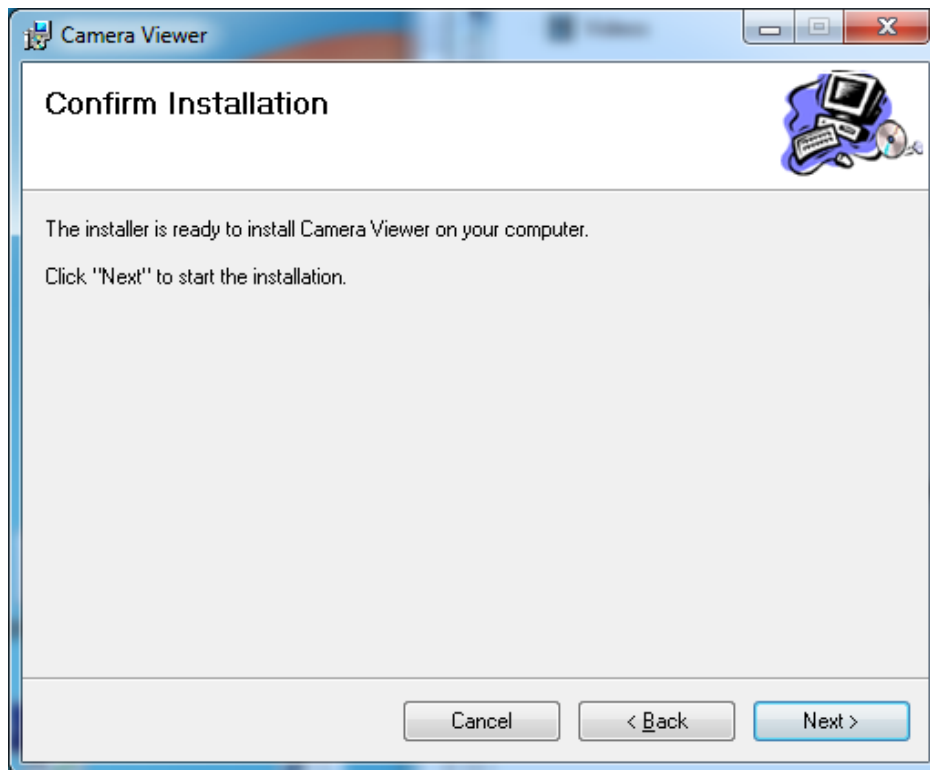
4. Click **Next**.



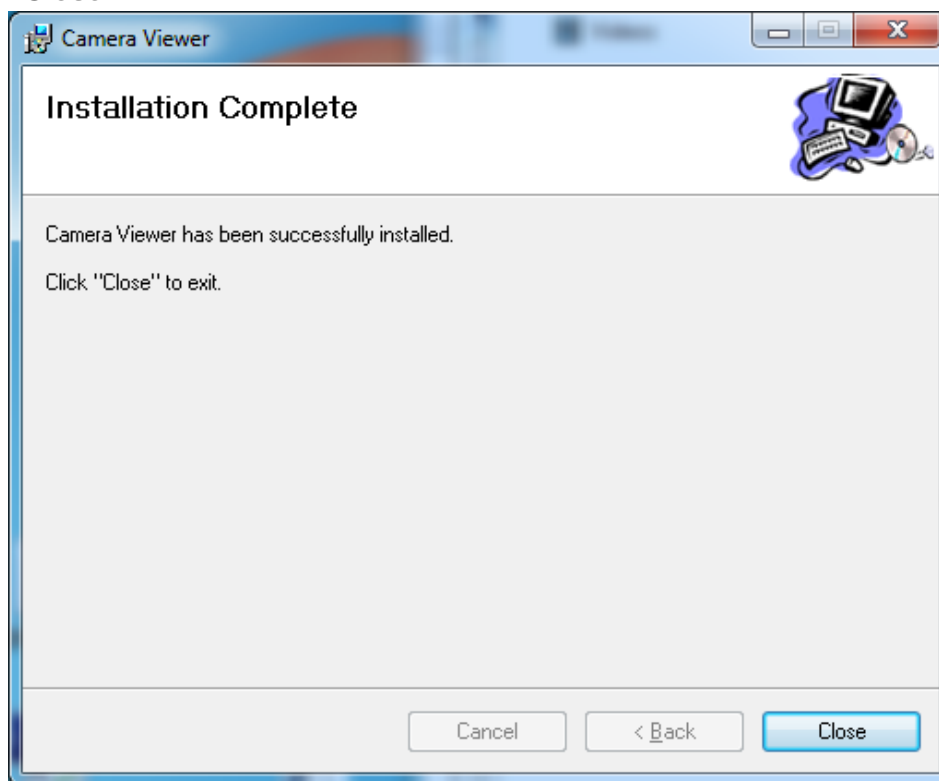
5. Click **Next**.



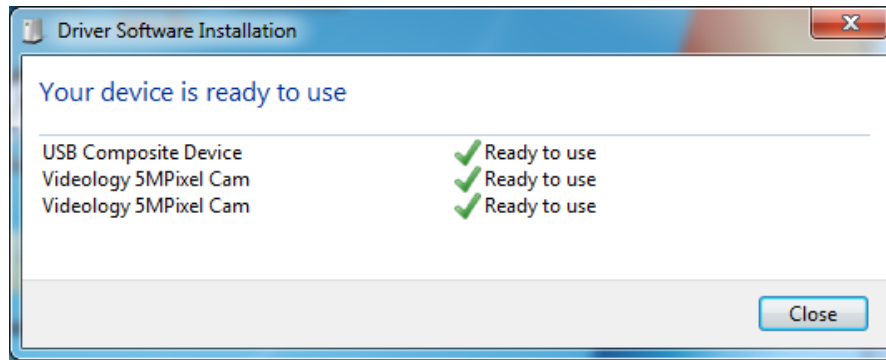
6. Click **Next**.



7. Click **Close**.

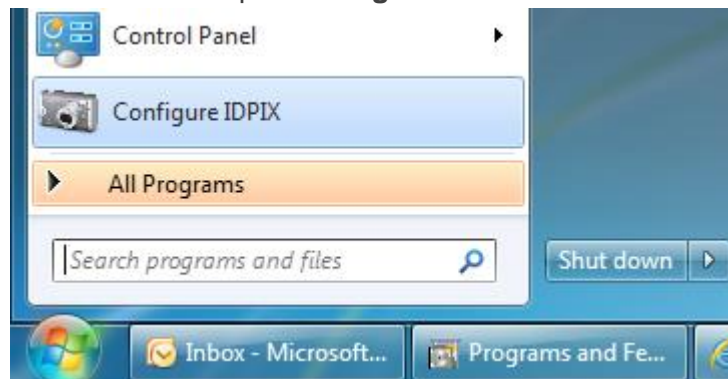


8. **Plug in Videology 5MP camera.** After a short time you should see this screen.

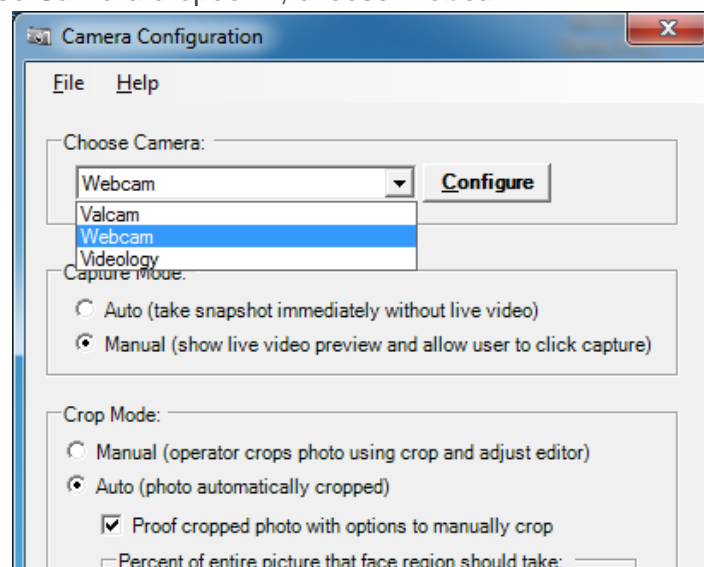


Configuring IDPix to Use Videology 5 MegaPixel Camera

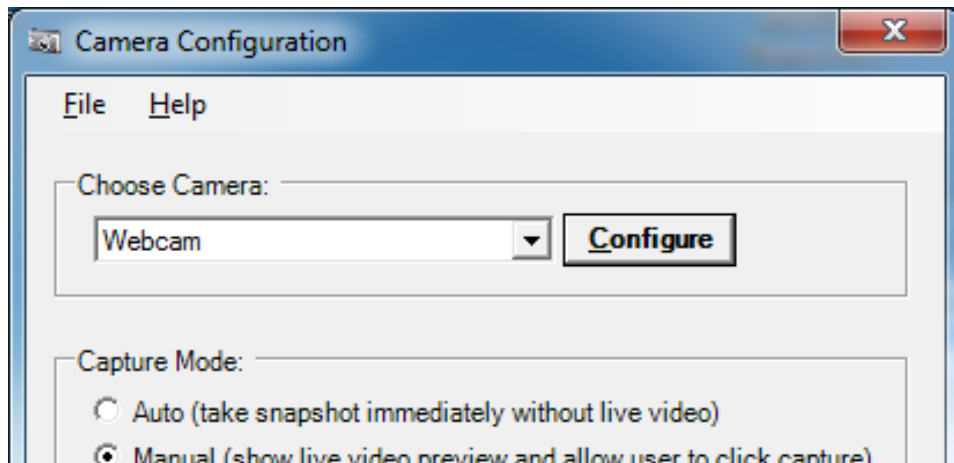
1. In the Start Menu locate and open **Configure IDPIX**.



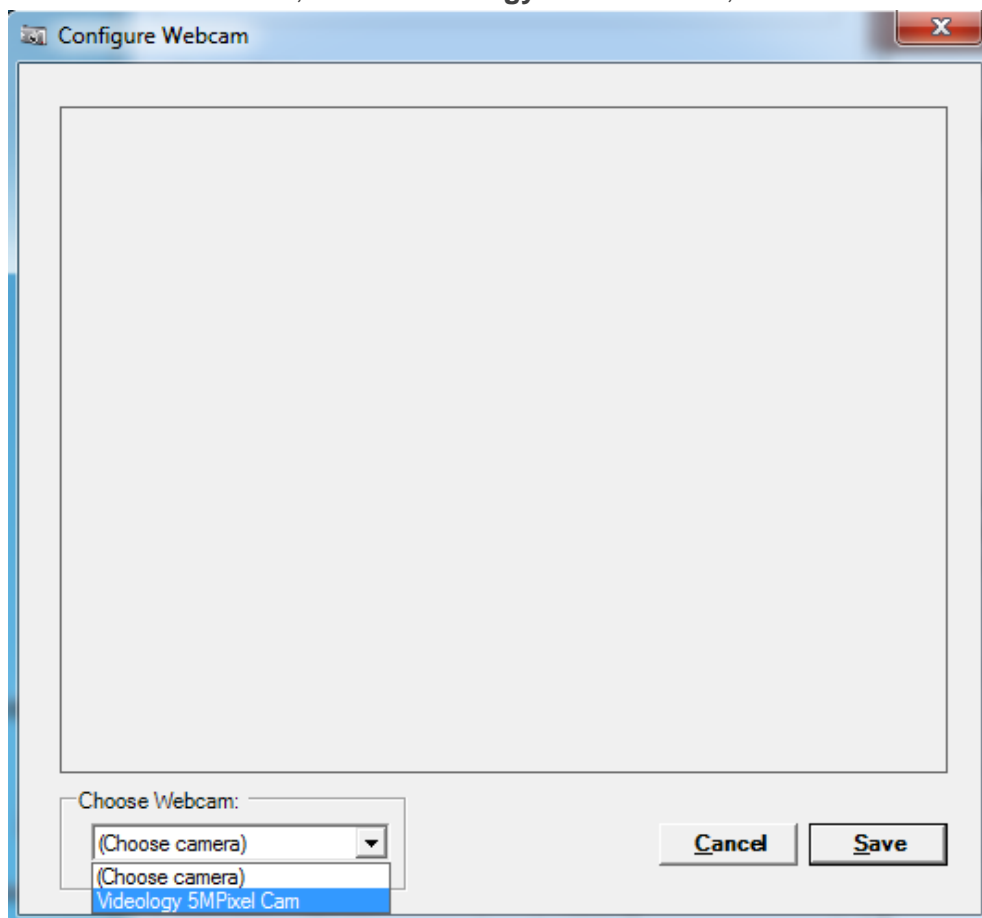
2. In the **Choose Camera** dropdown, choose **Webcam**.



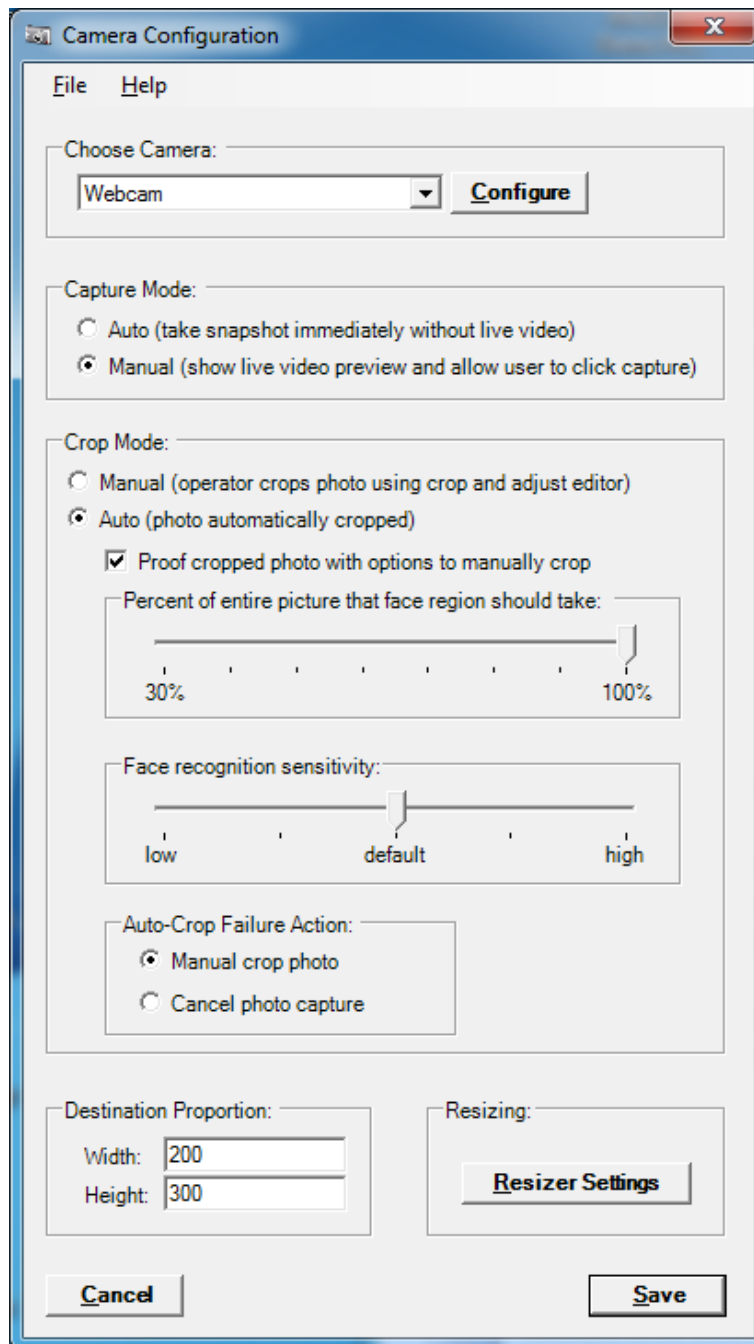
3. If you do not get a popup, click to **Configure** the Webcam settings.



4. Under **Choose Webcam**, select **Videology 5MPixel Cam**, then click **Save**.



5. Click **Save**.



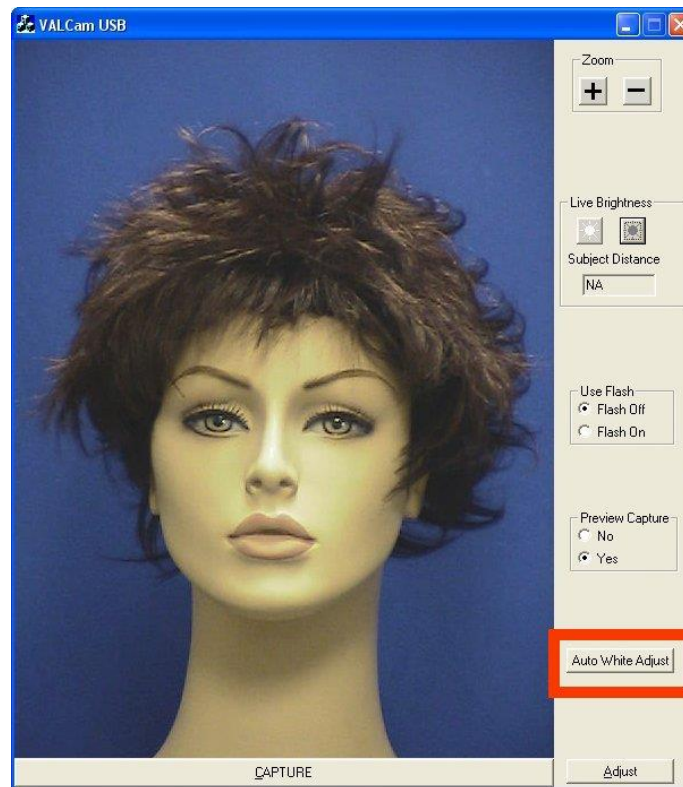
You have successfully Installed IDPix 1.1.6, the 5MP Videology Drivers, and Configured IDPix to use your new 5MP Videology camera.

Valcam (AutoCam)

Tip: Please do the initial set up for the Auto Cam (Start, programs, AutoCam) Prior to setting up inside IDPix 1000 Professional.

Open Auto Cam program.

Select **Auto White Adjust** in lower right corner.



Place white paper in front of subject's face.

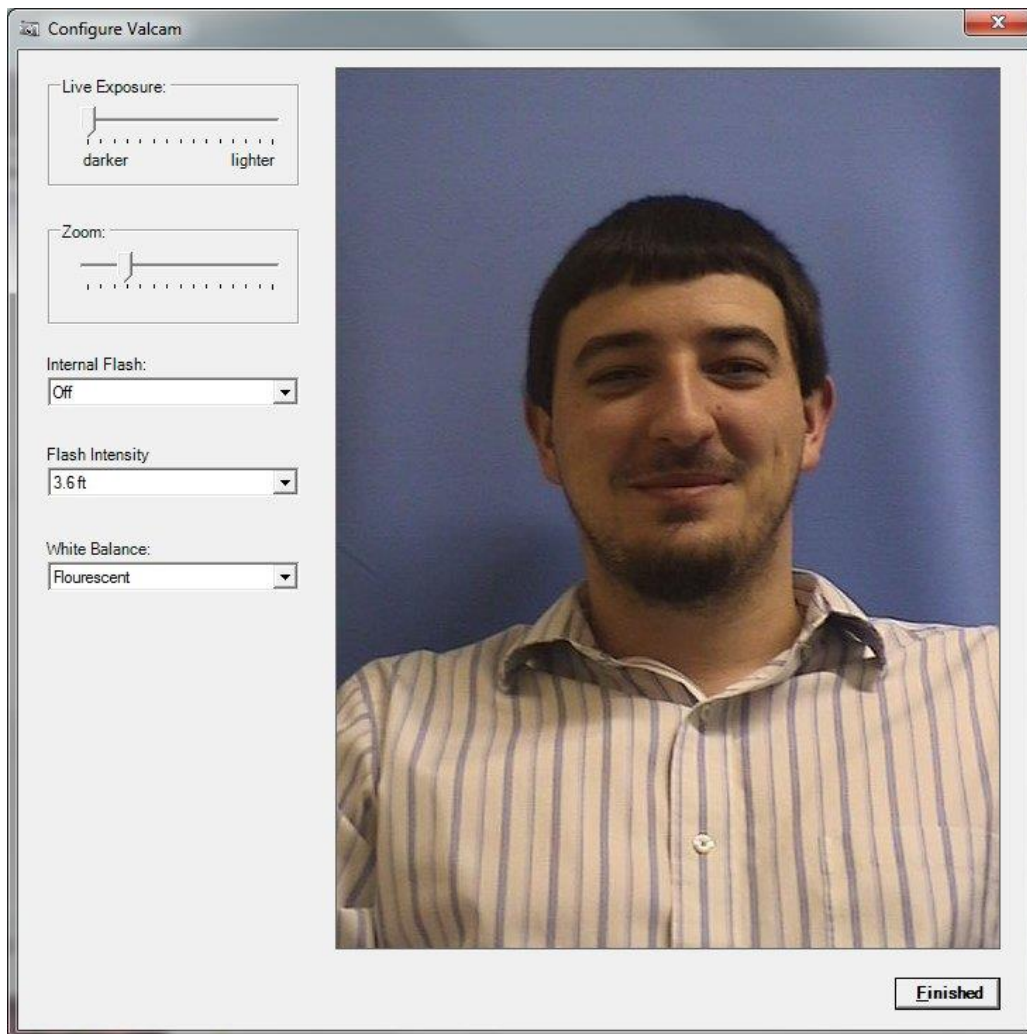
While holding paper in front of subject's face, click the **OK** button until you hear the pc beep.



The camera's white balance is now set.

Note: To get optimal quality, place white paper as close to where the subject will be positioned. Make sure paper covers 1/2 of the screen.

Valcam (AutoCam) Inside of IDPix



Adjust the **Live Exposure** as needed.
Adjust the **Zoom**.

Note: For best auto crop results, make sure zoom is set correctly.

Turn **Internal Flash** ON or OFF accordingly.
If flash is used, set **Flash Intensity** to match distance from camera to subject.
When settings are completed, select **Finished**.
On the Camera Configuration screen, click [Save](#).

Configuring IDPix Inside Third Party Software

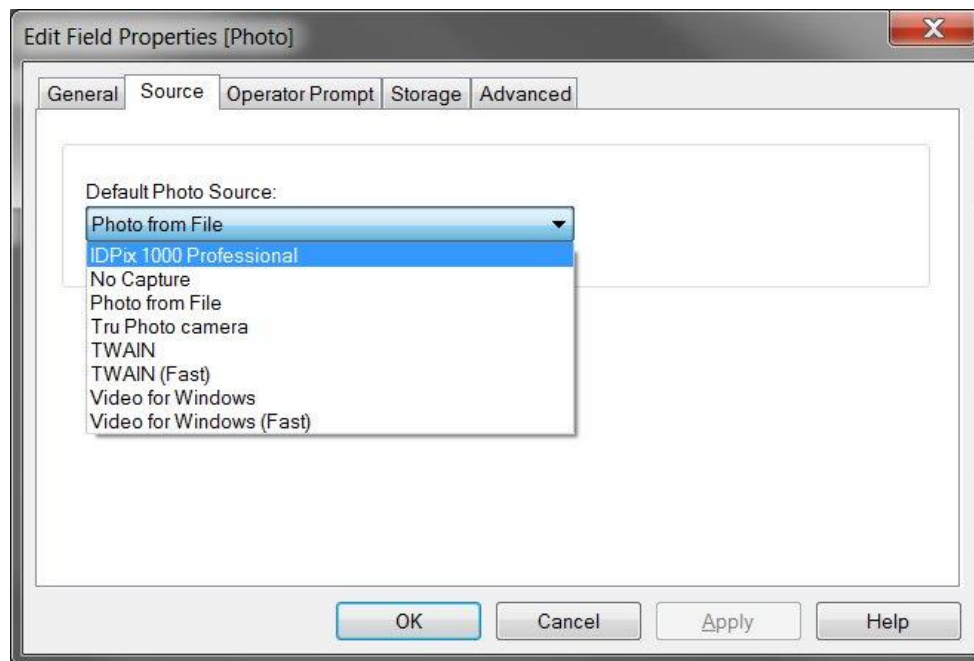
Datacard ID Centre

Open **ID Centre Designer**.

Open the ID Centre project that you want to use the **IDPix 1000 Professional** capturing software.

Select **View** the **Production form**.

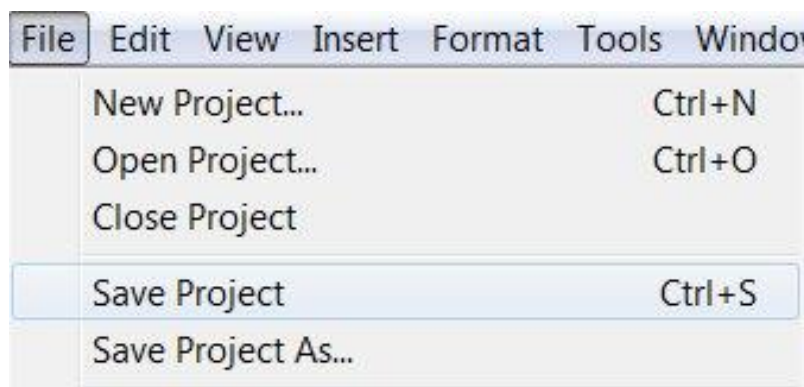
Click the **Photo Field**, select the **Source** tab.



Select the **IDPix 1000 Professional** from the dropdown.

Click **OK**.

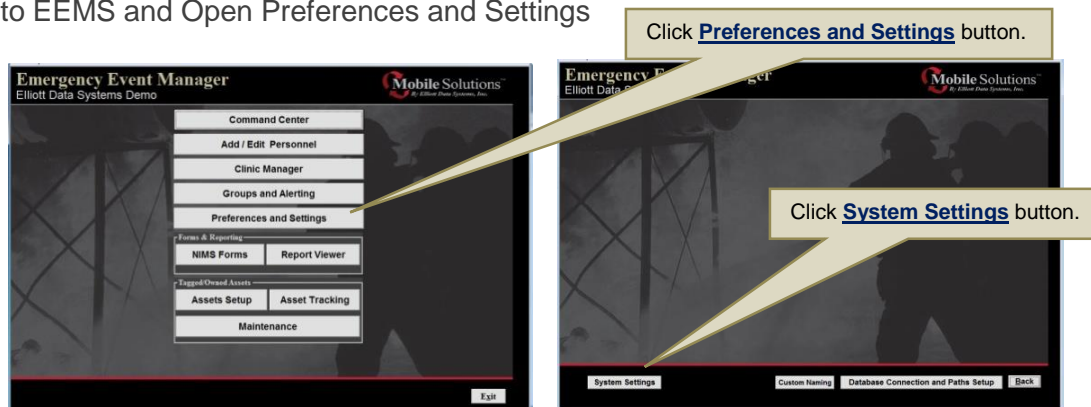
Click the **File** menu then **Save Project**.



Mobile Solutions Preferences and Settings

Elliott Data Mobile Solutions (EEMS)

Log in to EEMS and Open Preferences and Settings



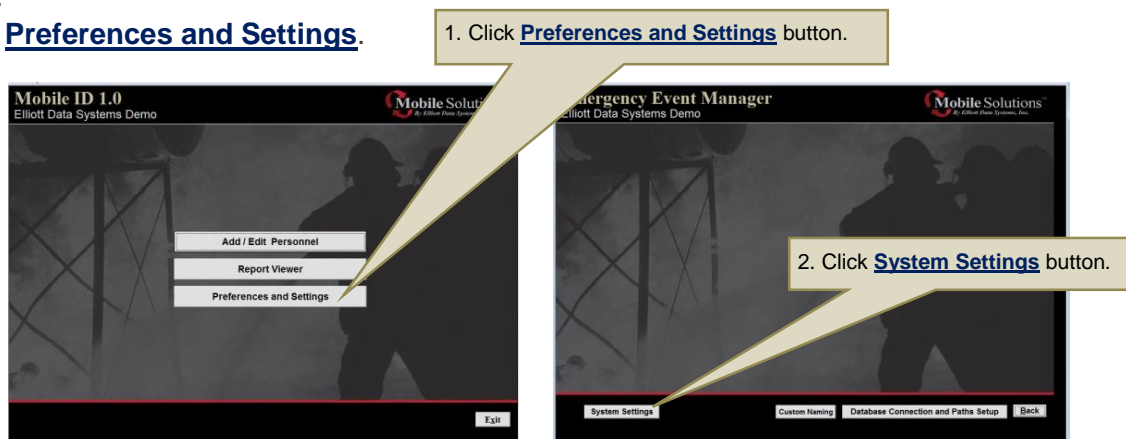
Select Program Preferences.

Select System Settings.

Elliott Data Mobile Solutions (Mobile ID 1.0)

Log in.

Select Preferences and Settings.

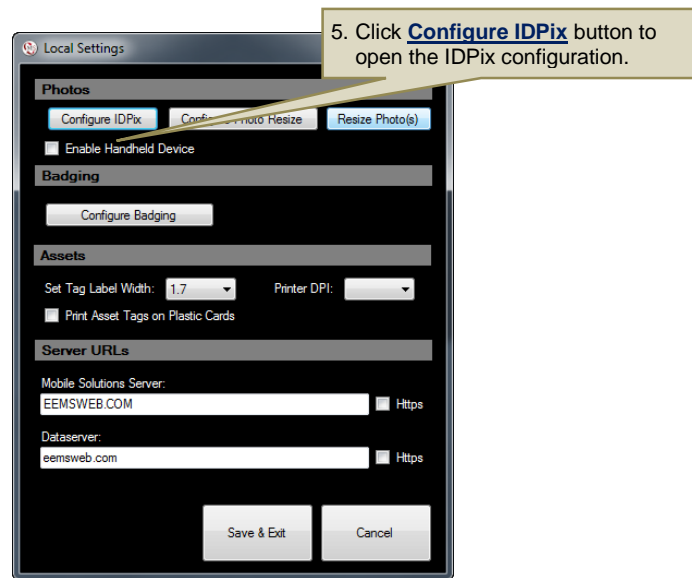


Select **Program Preferences**.

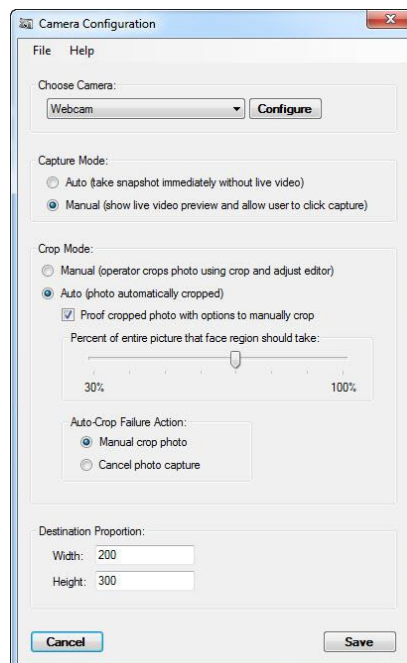
Select **System Settings**.

3. Slide mouse over to left to expand Quick Nav





Select configure **IDPix**.



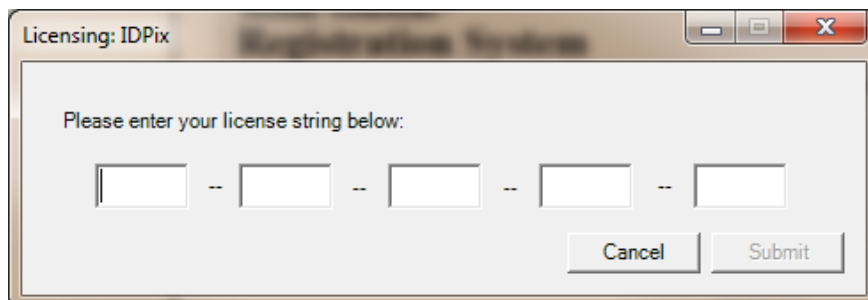
Select the camera from the dropdown list.

Follow the configuration procedures on page 4 for your specific camera

Select **Save** and Exit to save and return to the previous page

Licensing IDPix

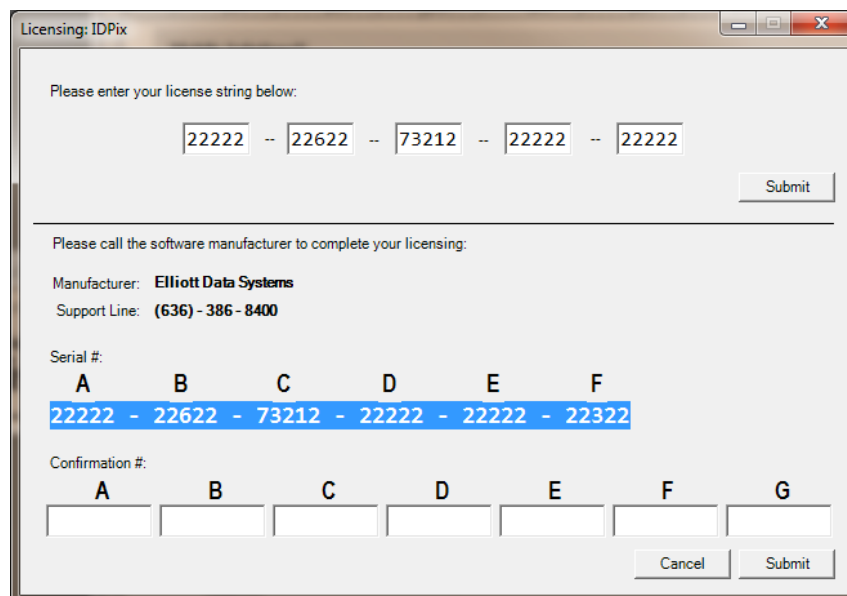
When opening ID Centre for the first time after installing IDPix 1000 Professional, you will get the following screen.



A dialog box titled "Licensing: IDPix" with a close button (X) in the top right corner. The text inside says "Please enter your license string below:". Below this text is a form with five empty rectangular boxes separated by hyphens. At the bottom right of the dialog are two buttons: "Cancel" and "Submit".

You will then enter the Product key that was sent to you for the installation. The licensor will attempt to connect and automatically license the software. If the licensor connects, the screen will close and the software has been licensed.

If the Licensor cannot connect, you will see the following screen.



A dialog box titled "Licensing: IDPix" with a close button (X) in the top right corner. The text inside says "Please enter your license string below:". Below this text is a form with five boxes containing the numbers "22222", "22622", "73212", "22222", and "22222" separated by hyphens. A "Submit" button is to the right of this form. Below a horizontal line, the text says "Please call the software manufacturer to complete your licensing:". This is followed by "Manufacturer: Elliott Data Systems" and "Support Line: (636) - 386 - 8400". Then, "Serial #:" is followed by a table with columns A through F. The table contains the text "22222 - 22622 - 73212 - 22222 - 22222 - 22322" which is highlighted in blue. Below this is "Confirmation #:" followed by a table with columns A through G, each with an empty box. At the bottom right are "Cancel" and "Submit" buttons.

A	B	C	D	E	F
22222	-	22622	-	73212	-
22222	-	22222	-	22222	-
22222	-	22322			

Please contact Elliott support at **1-888-345-8511** to have the software manually licensed.

Using IDPix

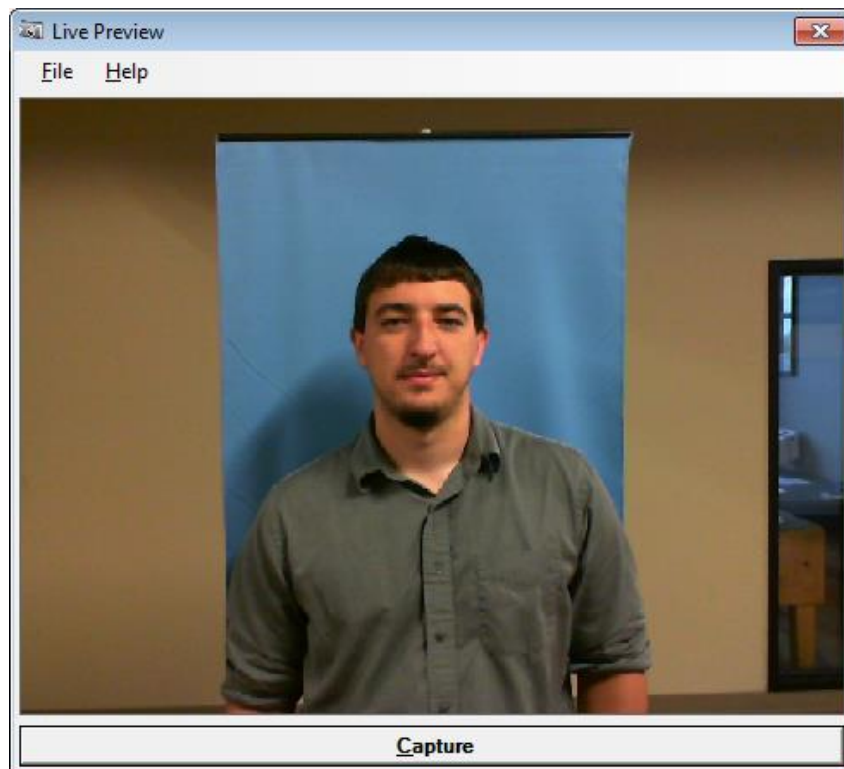
Basic Capturing

Launch IDPix from 3rd party application.

Move subject into view of camera (preferably with a backdrop).

If IDPix 1000 Professional is configured to have a Capture Mode of Manual you will see the live preview of the subject like the below screen.

Once the subject is in place, click [Capture](#).



If IDPix 1000 Professional is configured to have a Crop Mode of Auto and the Proof setting is enabled you will see a Crop Proof screen that will allow you to proof the captured and cropped photo before passing the picture onto the 3rd party software.



To accept the photo as displayed, click [OK](#).

If you wish to adjust the auto cropping of the captured photo, click [Manual Crop](#). For further details see “Manual Cropping of Captured Photo”

If you wish to adjust the brightness of the captured photo, click [Adjust](#). For further details see “Adjusting the Brightness of Captured Photo”

If you wish to retake the picture again, click [Retake](#).

Once you accept the captured photo, IDPix 1000 Professional will close and the picture will be displayed in the 3rd party application.

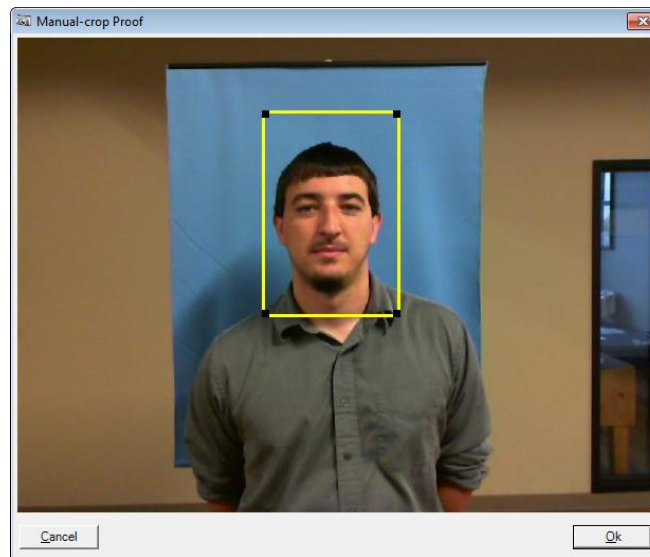
Manual Cropping of Captured Photo

Capture an image then click [Manual Crop](#).

Drag the yellow selection rectangle over the desired subject.

Resize the yellow selection rectangle to the desired size to encompass the entire subject by clicking the black corner of the rectangle while dragging to the desired size.

Once done adjusting the crop region, click [OK](#).



Adjusting the Brightness of Captured Photo

Capture an image then click [Adjust](#).



Click the picture with the preferred brightness.



Accessing Help from within IDPix

From the Live Preview screen or the Camera Configuration screen, click the Help menu, and then click Manual.

The IDPix manual will display in your default PDF viewer.