



ZEBRA WIN 7

ASSET PRINTER

Technical Guide

Version # 7.4 Rev 2



Prepared By:
Elliott Data Systems, Inc.

17825 Edison Ave
Chesterfield, MO 63005
(636) 386-8400
Fax (636) 386-3072

Customer Service Support
1-888-345-8511

mobilesolutions@elliottdata.com
www.elliottmobilesolutions.com

Table of Contents

Zebra Label Printer Setup with Windows 7 4

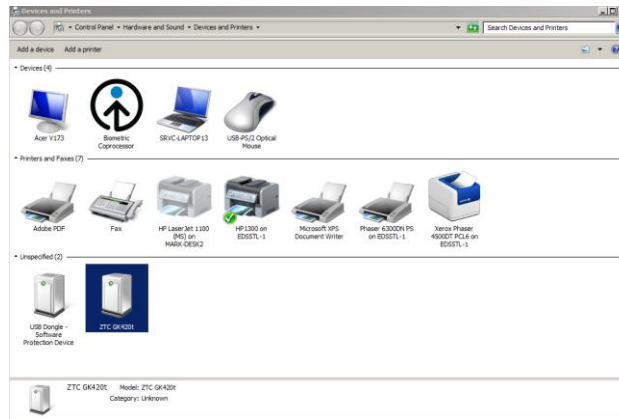
Factory Reset printer..... 7

Calibrate printer to Asset Labels 8

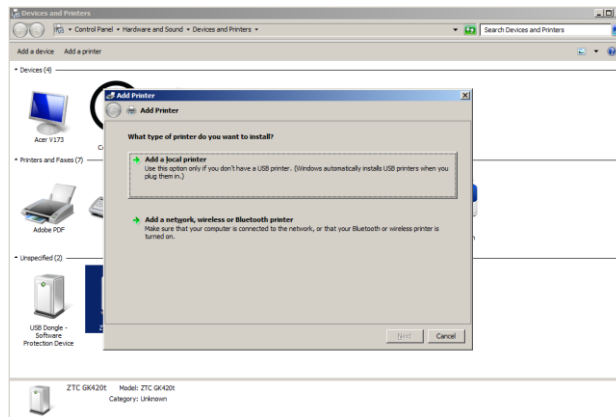
Mobile Solutions asset printer setup (Local Settings)..... 9

Zebra Label Printer Setup with Windows 7

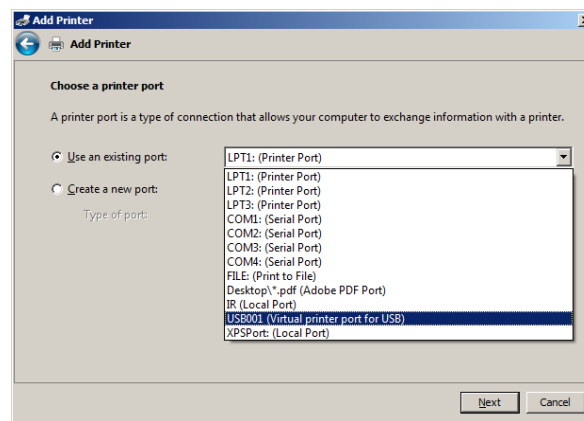
1. Plug in the Zebra printer and let Windows find it.

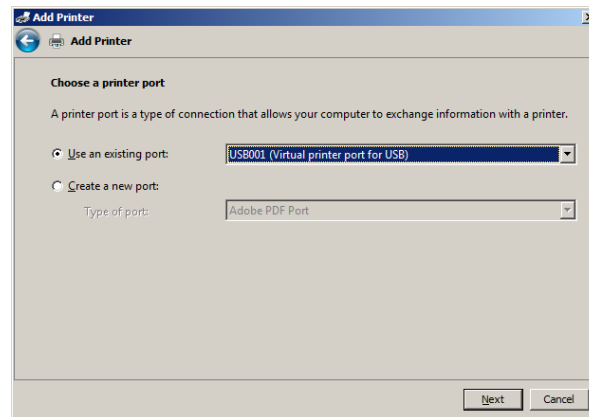


2. Select Add a local Printer

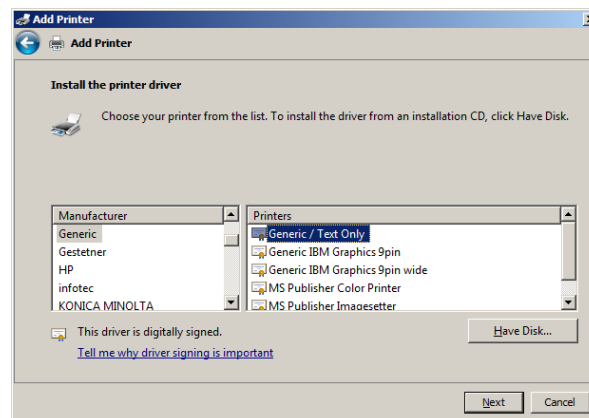


3. Select correct USB00X (Virtual printer port for USB)

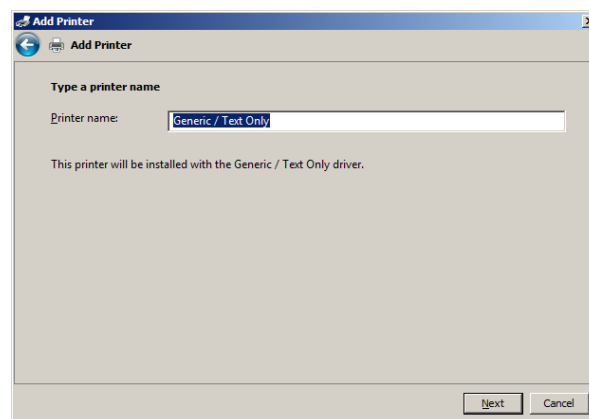


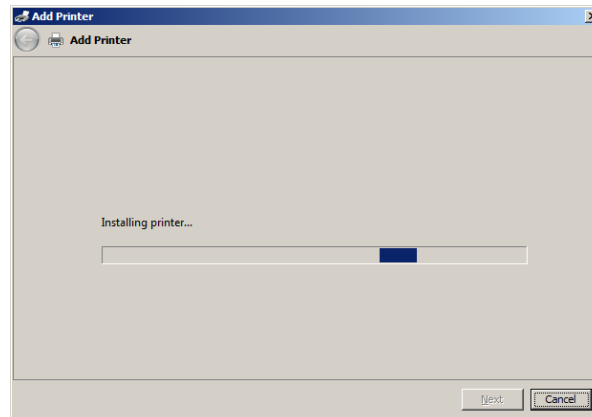


4. Uncheck “**Show compatible hardware**” check box. Select “**Generic**” type printer and select “**Generic / Text Only**” then click “**Next**”.

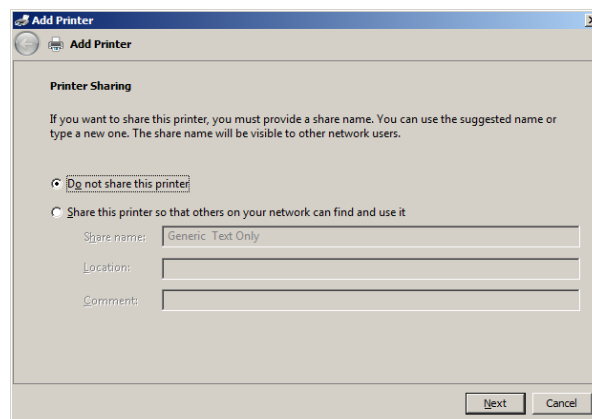


3. Rename the printer name to: “AssetTag”

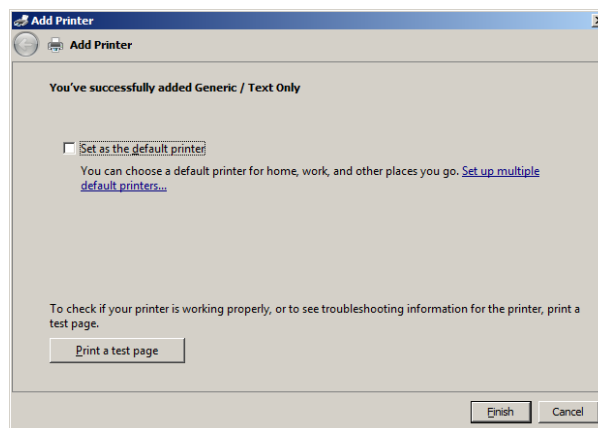




5. Do not share printer



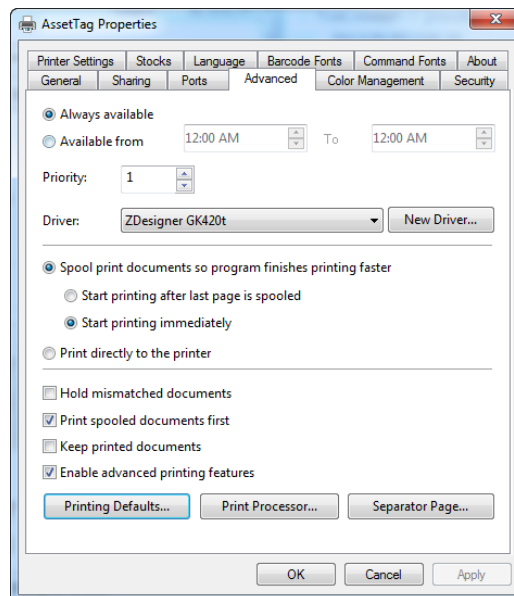
6. Uncheck Set as "Default"



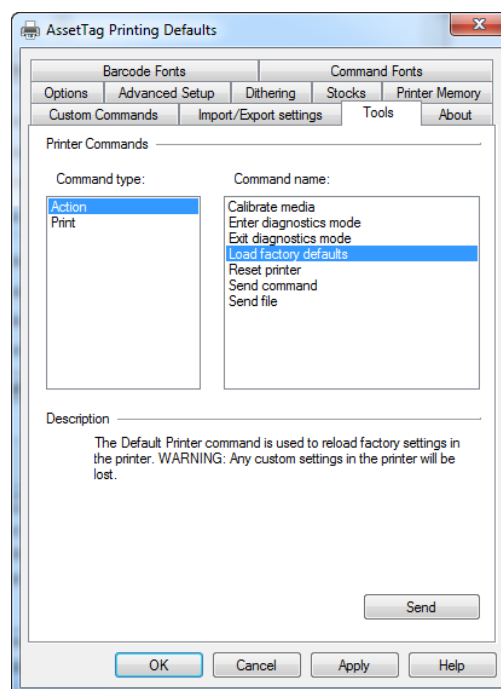
7. Click Finished to complete

Factory Reset printer

Note: You can change the printer driver back to Zdesigner GK420t Driver to make the settings or complete these steps before changing the driver to the Generic / Text. Just remember to return it to the Generic/Text only for use with EEMS asset printer.

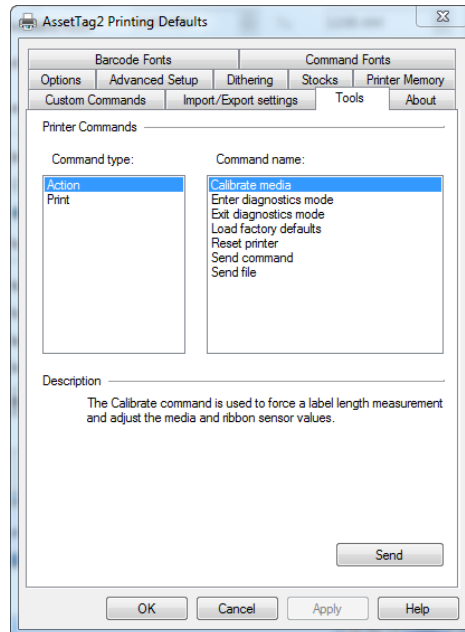


Select Printing defaults



Calibrate printer to Asset Labels

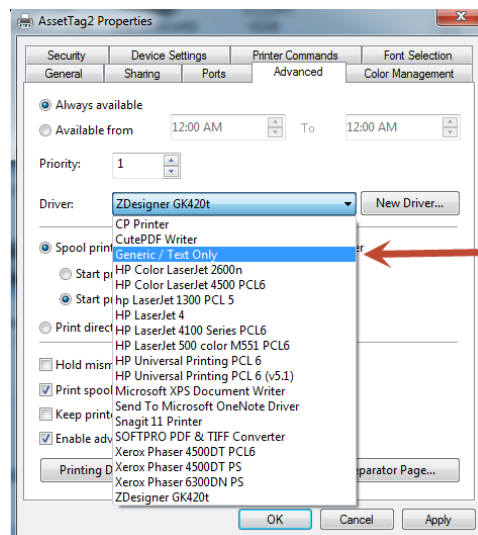
Select Tools Tab and Select Action and Load Factory Defaults Click Send to reset printer to factory settings



Make sure you have the ribbon and labels installed in the printer.

Select Action and Calibrate media then click Send to calibrate the printer to the asset labels.

Click OK when complete



From the advanced tab change the driver to Generic / Text Only. Click OK or Apply to apply the new settings.

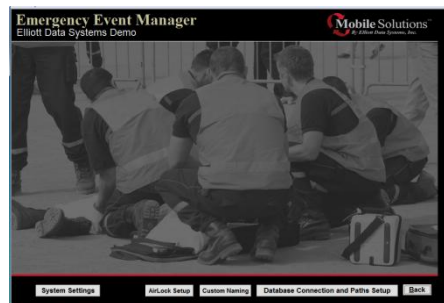
Mobile Solutions asset printer setup (Local Settings)



1. Log in to EEMS – as a admin user



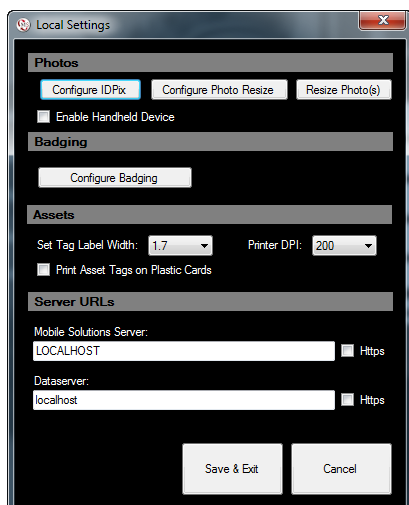
2. Select Preferences and Settings



3. Select System Settings



4. Slide Cursor to the left of the screen to expose the Quick Nav.
5. From the Quick Nav select the Local Settings.



6. Select from the Set Tag Label Width “1.7” and Printer DPI drop down “200”
7. Click Save and Exit to complete