



SMART REG CREATE PROFILE

Technical manual

Version #7.6.xx



Prepared By:
Elliott Data Systems, Inc.

17825 Edison Ave
Chesterfield, MO 63005
(636) 386-8400
Fax (636) 386-3072

Customer Service Support
1-888-345-8511

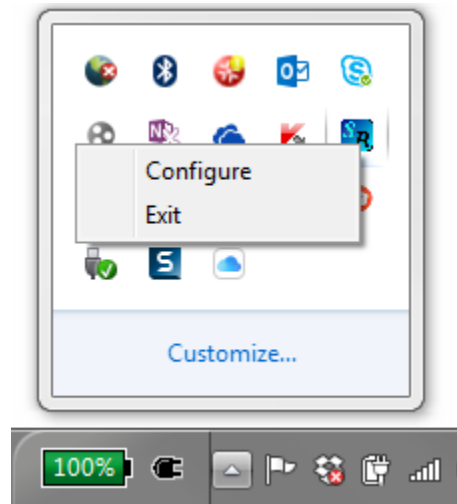
mobilesolutions@elliottdata.com
www.elliottmobilesolutions.com

Table of Contents

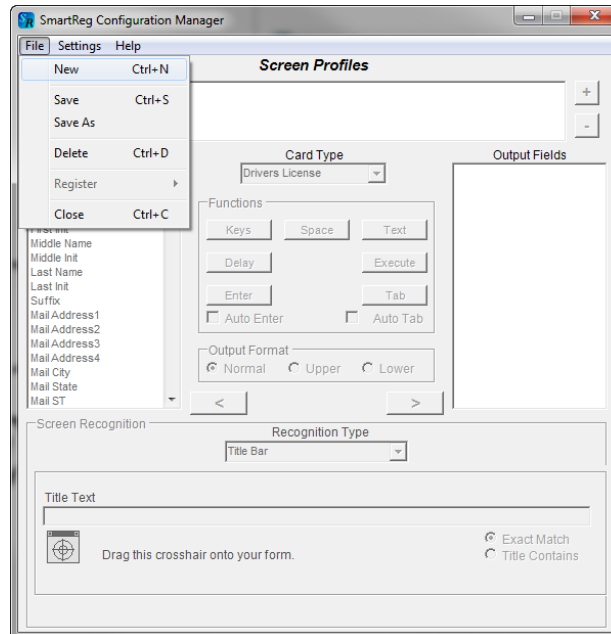
Create profile 4

Create profile

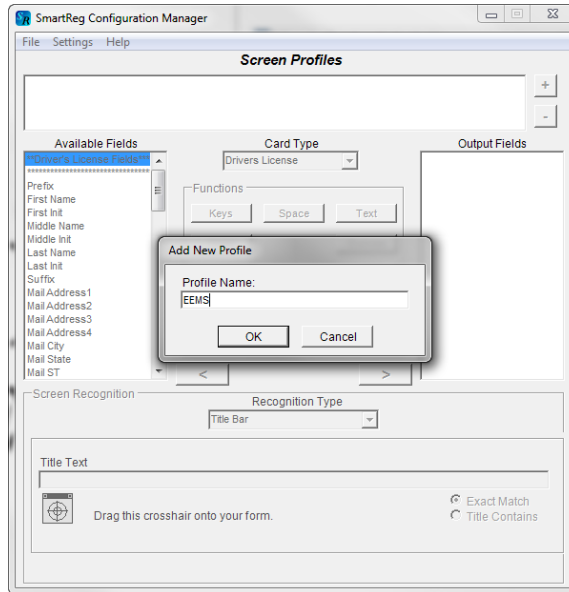
1. Start Smartreg
2. Open windows taskbar
3. Rt click SmartReg icon in the windows task bar
4. Select Configure



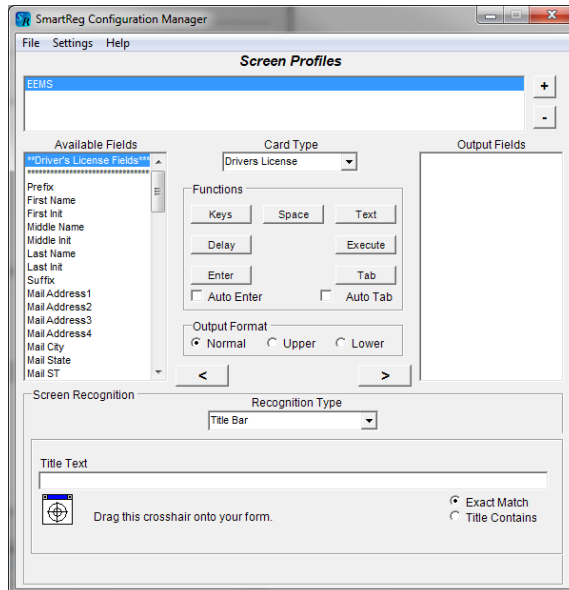
5. Click File>New



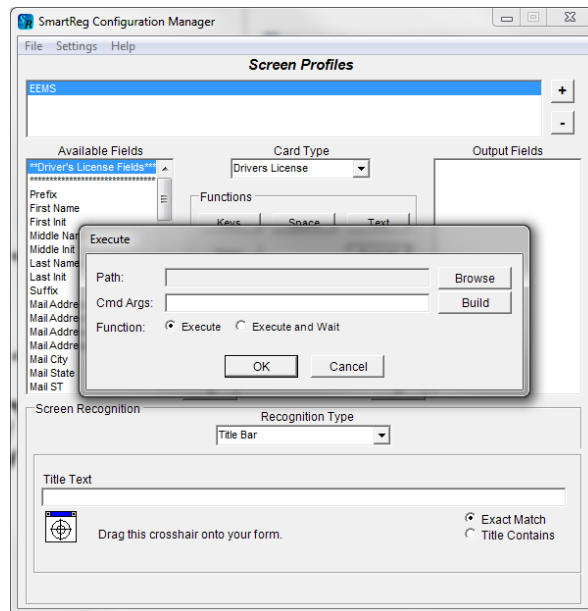
6. Type EEMS and Click OK



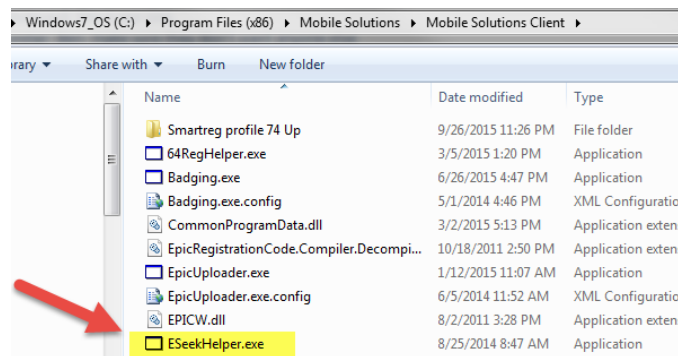
7. Click Execute



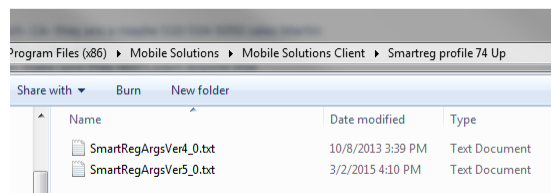
8. Click Browse to select program



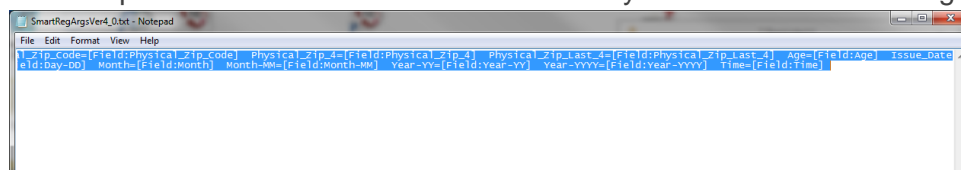
9. Browse to C:\Programfiles (x86)\Mobile Solutions\Mobile Solutions Client\Eseekhelper.exe



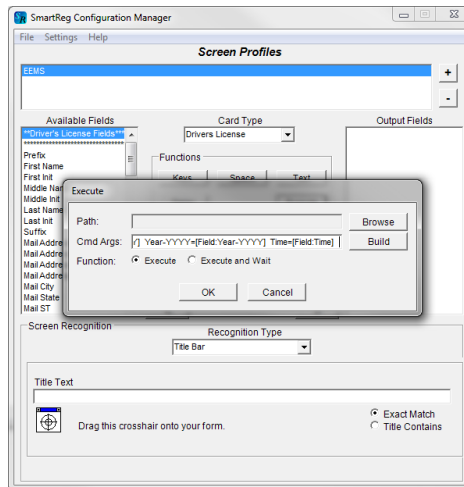
10. Open Windows Explorer and browse to C:\Program Files (x86)\Mobile Solutions\Mobile Solutions Client\Smartreg profile 74 Up



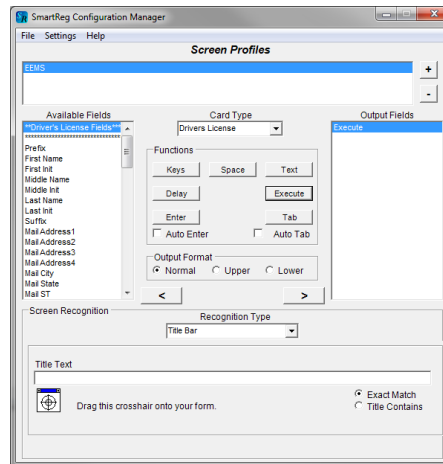
11. Double click to open version of txt file that is correct for your version of SmartReg.



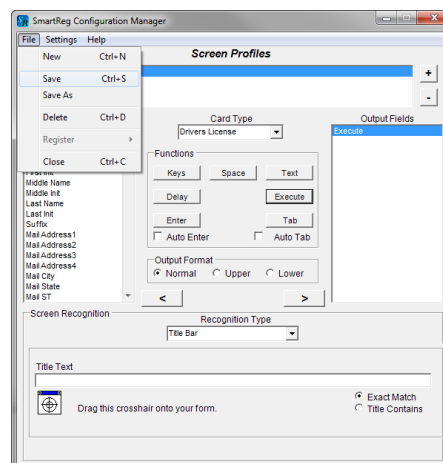
12. Select all text using “cntl A” or copy all and paste in “Cmd Args”
Note: be sure to have 2 spaces after the text



13. Click OK



14. Click File>Save



15. Click Red “X” in top Rt corner to exit

Profile complete.