



PACIFIC ALASKA LUMBER COMPANY, LLC
LAKEWOOD, WA & ANCHORAGE, AK

PRUDHOE BAY, AK ~ *Summer 2018*

Vint Jones & Blaine Peterson conducted an onsite materials inspection of the new Doyon Rig 26 support building in Dead Horse, AK





The Cross Laminated Timber (CLT) we supplied for this project provides a strong, durable & economical alternative to poured concrete footings / slabs.

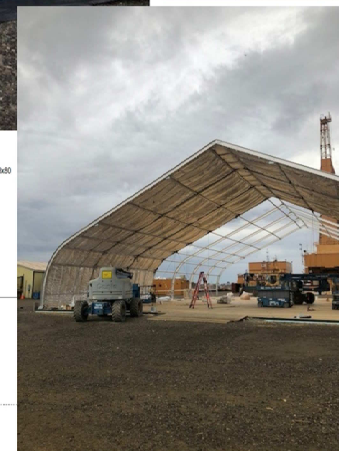
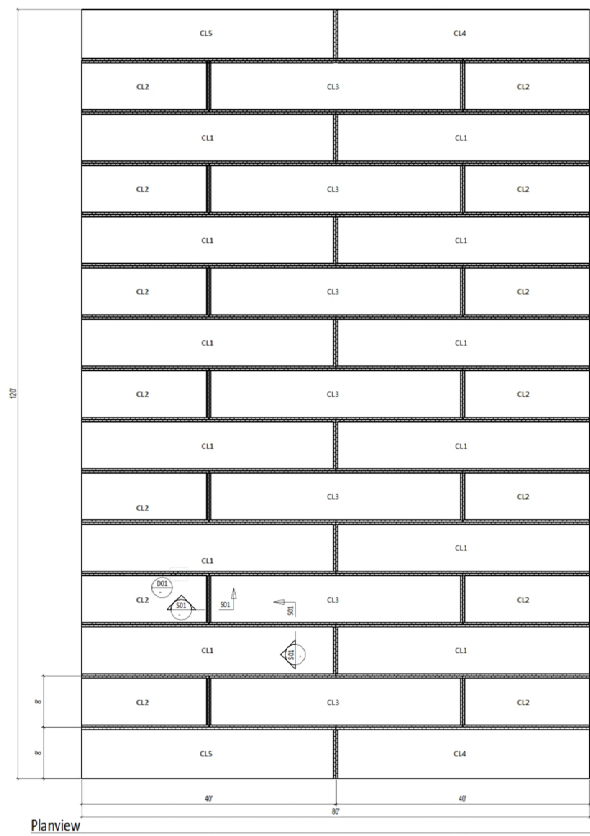




Pacific Alaska Lumber is excited to partner with Structurlam, providing innovative “Next Generation” flooring and matting solutions for our customers. Contact us today to learn more about how CLT technology can benefit you!

253-414-0200 ♦ www.pacaklumber.com ♦ 888-732-3542





PROJECT SPECIFICATIONS	
CROSSLAM	
Wall Lifting Holes	none
Lumber On Visual Side	UP (unpainted)
Wood Coating	flc Coating Bare Wood
Finish	unpainted
Wrapping	none
Length Edge Chamfer	none
Edge Coating (Perimeter)	2 coat Marine Enamel
Hardware	Supplied by others

Hardware	Supplied by others

[illegible]