

**SKYLINE**<sup>®</sup>



**CONTEMPORARY  
CABIN**





# CONTEMPORARY CABIN

Inspired touches make the Contemporary Cabin Series by Skyline Homes anything but ordinary. Skyline offers a one and two bedroom model, each with one bath. Whether you opt for the base floor plan or the optional Kittopia Kitchen Package, you're sure to find a comfortable place to call home. Manufactured in Arkansas City, Kansas and backed by over 65 years of manufacturing experience, a 12-month warranty and stellar customer service — take a look for yourself to see why the Contemporary Cabin Series is the right decision for you and your family.

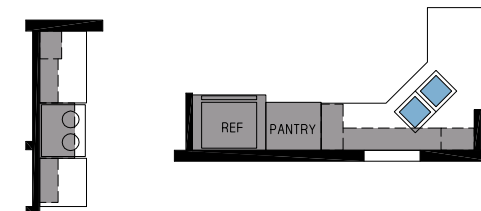
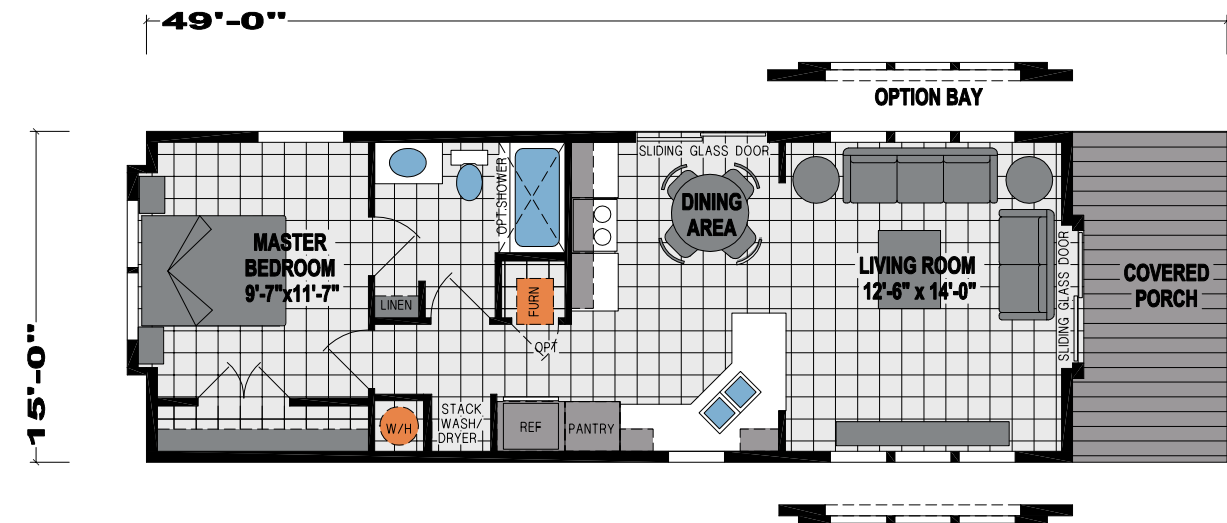


ARTIST RENDERING



**MODEL  
A700B**

**1 BED-1 BATH  
630 SQ.FT.**



OPTIONAL  
**KITTOPIA™**  
KITCHEN DESIGN

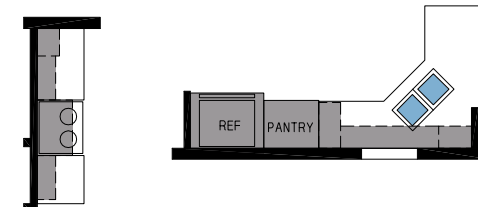
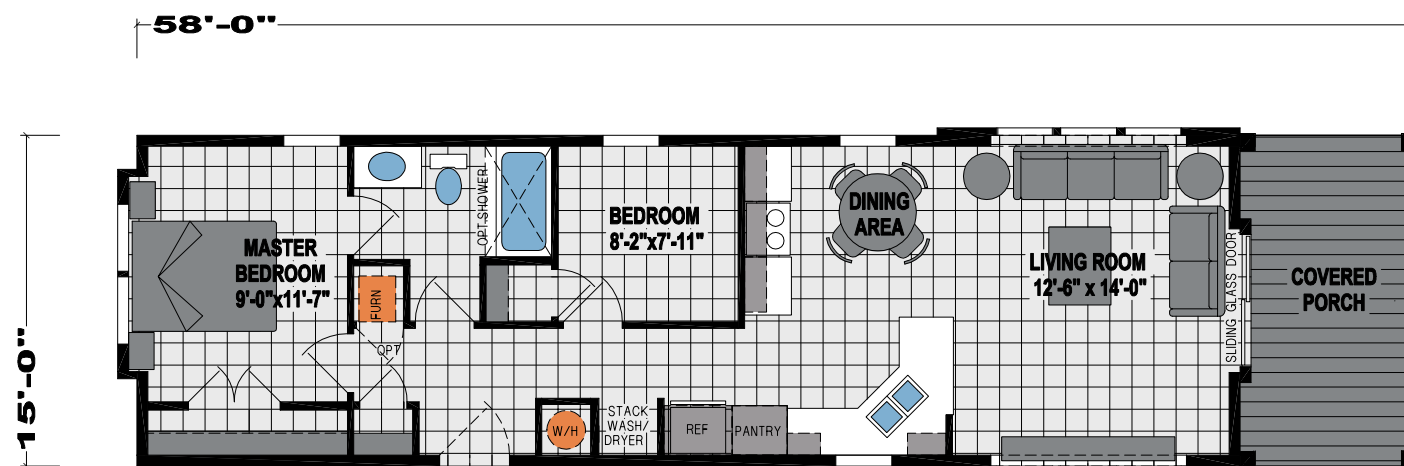




ARTIST RENDERING

**MODEL**  
A701B

**2 BED-1 BATH**  
**750 SQ.FT.**



OPTIONAL  
**KITTOPIA™**  
KITCHEN DESIGN



# CONTEMPORARY CABIN

## STANDARD FEATURES



▲ MODEL 700B

### CONSTRUCTION

- Sloped Sidewalls
- Sloped Ceilings Throughout
- 2x6 Exterior Walls
- 2x3 Interior Walls
- 1/12 Roof Pitch
- 30# Roof Load
- 2 x 8 Joists
- Detachable Hitch
- Thermal Zone II
- R 38-19-11 Insulation

### EXTERIOR

- Vinyl Siding with House Wrap
- OSB Sheathing on Sides and Ends
- Raised Rib Metal Roof
- Sliding Glass Door (Per Floor Plan)
- Single-Hung Low-E Windows

### INTERIOR

- Linoleum Throughout
- Mini Blinds
- Vinyl on Gypsum
- 1 1/2" Crown Molding
- 1 1/2" Base
- 1 1/2" Casing
- Lip Molding with Wrapped Luan Jambs on Exterior Doors and Windows

### KITCHEN

- CS90 Cabinet Construction
- Flat Panel Cabinet Doors
- Hardwood Cabinet Styles
- Roller Drawer Guides
- Single 3" Stacked Style Cabinet Molding
- Shelf in Base Cabinet
- Self-Edge HPL Countertop
- 4" Laminate Backsplash
- 8" Double Bowl Sink - Stainless Steel
- Single-Lever Kitchen Faucet

### HEATING/UTILITY

- Electric Furnace
- Inline Metal Heat Ducts
- Metal Duct
- 40-Gallon Electric Water Heater

### PLUMBING/ELECTRICAL

- 200 AMP Service
- LED Throughout (Except Pendants and Ceiling Fans)
- Exterior GFCI Receptacle (1)
- Whole House Water Shut-Off
- Water Shut-Offs All Fixtures
- DWV and Water Supply Plumbed into Drop/s
- Plumb for Washer
- Wire for Dryer

### APPLIANCES/AUDIO VISUAL

- 18 Cu. Ft. Refrigerator
- 30" Black Electric Range
- Lighted Range Hood

### BATH FEATURES

- Flat Panel Cabinet Doors
- Hardwood Cabinet Stiles
- 1-Piece Fiberglass Tub/Shower
- Self-Edge HPL Countertop
- China Lavatory Bowls
- Dual-Handle Lavatory Faucets
- Elongated China Commodes
- Power Vent Fan with Light

Member:



Due to continuous product development and improvement, prices, specifications, and materials are subject to change without notice or obligation. Square footage and other dimensions are approximate. Exterior images may be artist renderings and are not intended to be an accurate representation of the home. Renderings, photos and floor plans may be shown with optional features or third-party additions.

**SKYLINE**®

Arkansas City, KS