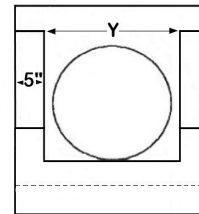
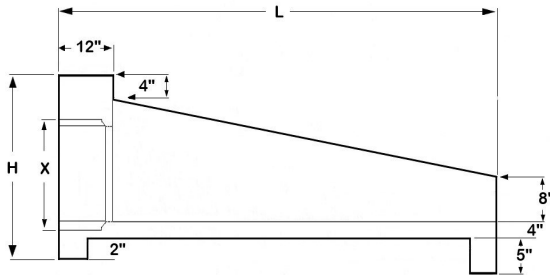
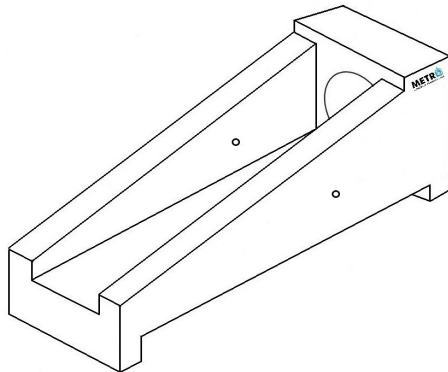


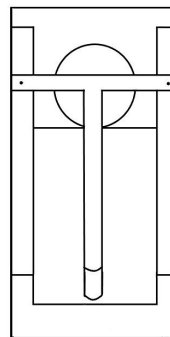
PIPE I.D.	X	H	Y	L	Wgt. Lbs.
18"	26"	35"	24"	96"	1,030
24"	32"	41"	30"	128"	4,750
30"	40"	49"	36"	160"	7,165
36"	46"	55"	42"	190"	12,650



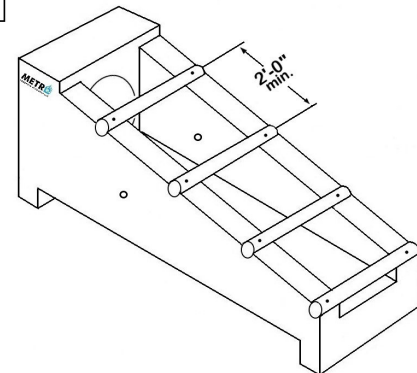
3-1/2" GALVANIZED PIPE SHALL CONFORM TO TXDOT SPECIFICATION



PLAIN



TYPE II CROSS
"TYPE C"



TYPE II PARALLEL
"TYPE P"

SPECIFICATIONS

REINFORCEMENT:
GRADE 60 NO. 4 STEEL REBAR TO
CONFORM TO ASTM A-615 ON REQUIRED CENTERS

CONCRETE:
CLASS 1 CONCRETE WITH DESIGN STRENGTH
OF 4500 PSI AT 28 DAYS. MONLITHIC CONSTRUCTION
AT FLOOR AND WALLS

CASTINGS:
RINGS AND COVERS ARE GREY CAST IRON
COMFORMING TO ASTM A48-76 CLASS 30

SAFETY END TREATMENTS 18" in - 36" in

METR 
CONCRETE PRODUCTS LLC

E-mail - bids@metroconcreteproducts.com

Ph-(936)756-3500

Fax(936)756-4676

CUSTOMER:		LOCATION:		ENG.		PRODUCT#		PROJ#		DRW by MLS
DATE :	DWG.#	DWG.DATE: 2-03-2020	REV#							

