

# LiUNA!



## Contact:

*Southern & Central Laborers'  
Employers Cooperation &  
Education Trust*

*LECET Program*

*5100 Ed Smith Way, Suite B*

*Marion, IL 62959*

*618-998-1787*

*kvinson@scildc.com*



Shawnee Community College

Leslie Cornelious-Weldon  
Career Services Coordinator  
8364 Shawnee College Road  
Ullin, IL 62992

lesliec@shawneecc.edu

618-634-3337

618-634-3209



Apprenticeship Training Program

Shawnee  
Community College

# LiUNA!



shawneecc.edu

## ENROLLMENT

*Students must first be accepted as a union apprentice OR have graduated from the Illinois Laborers' & Contractors Joint Apprenticeship and Training Program (ILCJATP)* and submit their awarded US DOL Certificate to be accepted into the AAS degree in Construction Management program. Students who wish to complete the AAS degree in Construction Management must take the Accuplacer exam (for Shawnee Community College courses only; not LBR designated courses) and be admitted into the College as a degree-seeking student. Accuplacer testing will be scheduled by the program contact. After taking the Accuplacer exam the students will be advised by the program contact on enrolling in their SCC classes. If you have taken the SAT or ACT test within the past three years, your scores may qualify you to waive or only take part of the test. Students may take Accuplacer at their local community college and vouchers will be provided by SCC **testing coordinator Mindy Ashby, [mindya@shawneecc.edu](mailto:mindyva@shawneecc.edu), or 618-634-3516.**

**Contact:** Ms. Leslie Cornelious-Weldon, Career Services Coordinator at 618-634-3337 or [lesliec@shawneecc.edu](mailto:lesliec@shawneecc.edu) for more information about enrolling in the program.

## COURSE SCHEDULING

The AAS degree in Construction Management is a cohort-based program that is **100% on-line with 24/7 tutoring services.\*** LBR-designated courses are scheduled and taught by union instructors according to the apprenticeship cycle. General education courses taken by enrolled students will be provided by SCC. Students may also have an option of enrolling in a regularly scheduled SCC general education course or enrollment in a flexibly-scheduled course if more convenient. Flexibly scheduled classes may be offered at the main campus, or extension site.

(\* Federal OSHA compliance course offered as tele-course)



## Earn Your Degree

The Associate of Applied Science (AAS) in Construction Management is a Higher Learning Commission and Illinois Community College Board approved restricted entry program. Students must first be accepted as a union apprentice to enroll. An applicant must meet the following requirements to be accepted into the Illinois Laborers' and Contractors' Joint Apprenticeship & Training Program:

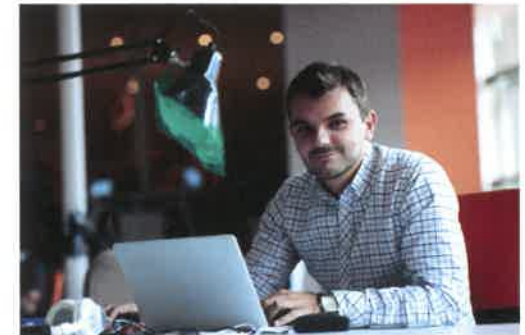
### Basic Qualifications

- 1) Applicant must apply in person
- 2) Must be 18+ of age at the time of application.
- 3) High School Graduate or GED Certificate
- 4) Physically able to perform the work of the trade
- 5) Possess a valid Driver's license

*Students must first be accepted as a union apprentice OR have graduated from the Illinois Laborers' & Contractors Joint Apprenticeship and Training Program (ILCJATP)*

## TUITION & FEES

Tuition and Fees are the responsibility of the student. Students may qualify for financial assistance as a member of the Laborers' International Union of North America (LIUNA). Tuition assistance is available for those members in the Southern & Central IL Laborers' District Council (SCILDC) through the Council's LECET program, which will cover the cost of each class completed with a passing grade. For more information on tuition assistance please contact your local union or Claude Sadler, LECET Director at the SCILDC office in Marion, IL. Students who do not complete the program must re-pay all tuition and fees. Students who qualify may also be eligible for financial aid through Shawnee Community College. Please contact Ms. Teale Betts, Financial Aid Specialist at 618-634-3265 or [tealeb@shawneecc.edu](mailto:tealeb@shawneecc.edu) for more information on tuition assistance through Shawnee Community College.



*Take your career to the next level!*