



GC Analyses

The Stethoscope of the Nose

with Christophe Laudamiel

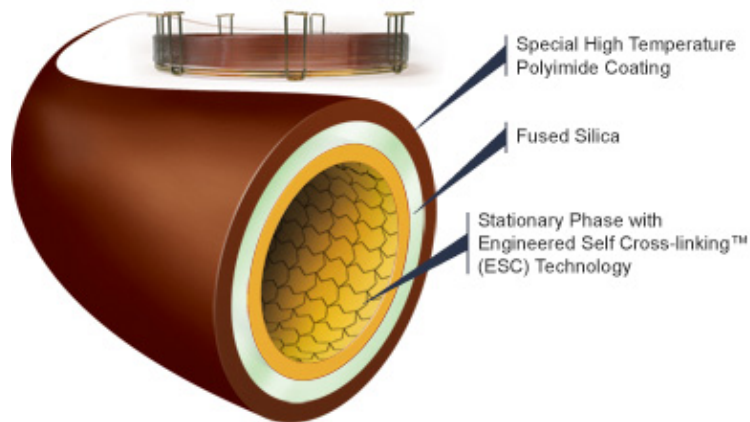
Master Perfumer, Ingénieur and Chemist International Champion

First half
common to SESSIONS 1 and 2

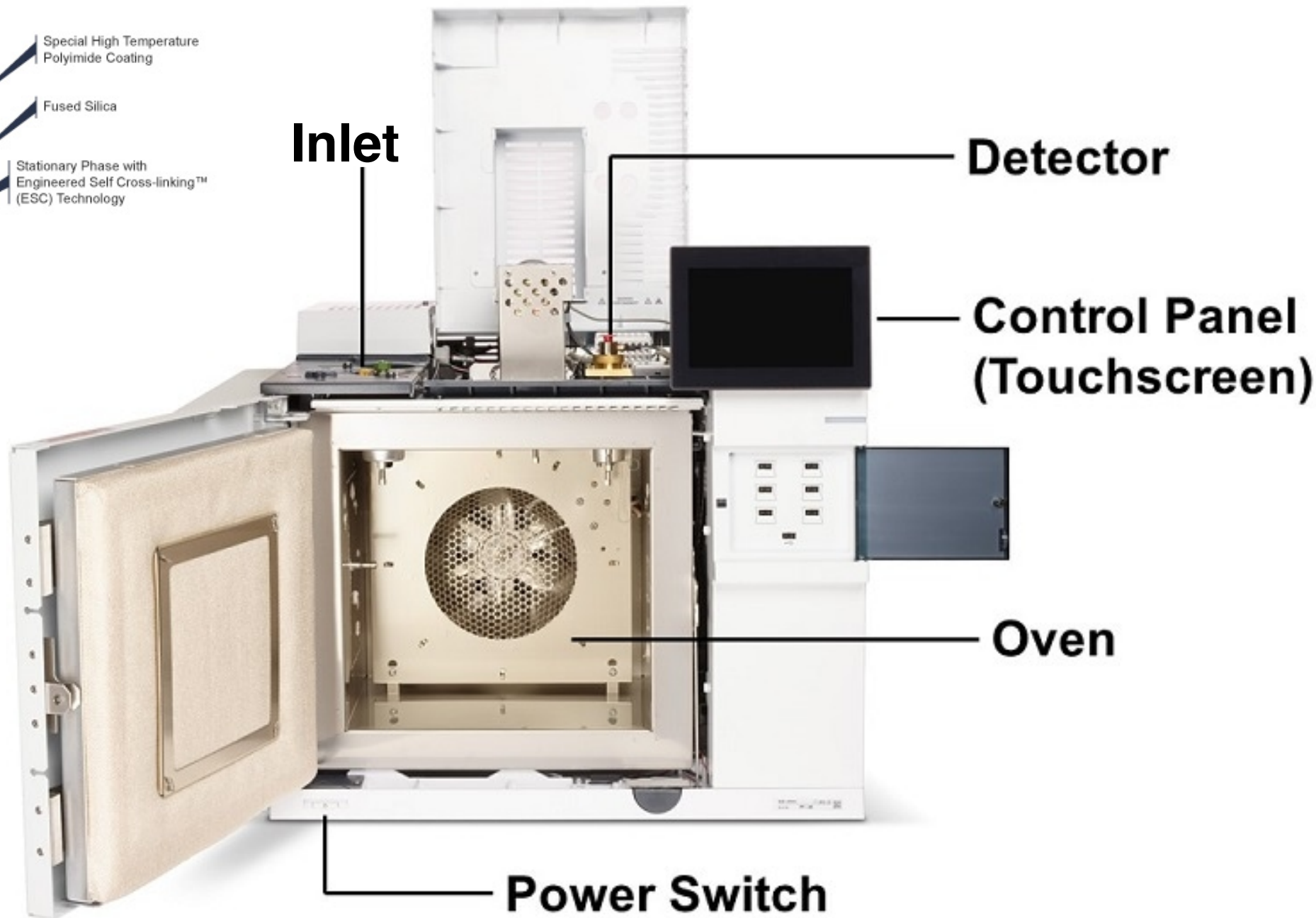
ACTUALLY A COMBO OF
STETHOSCOPE and X-RAY ACTIONS

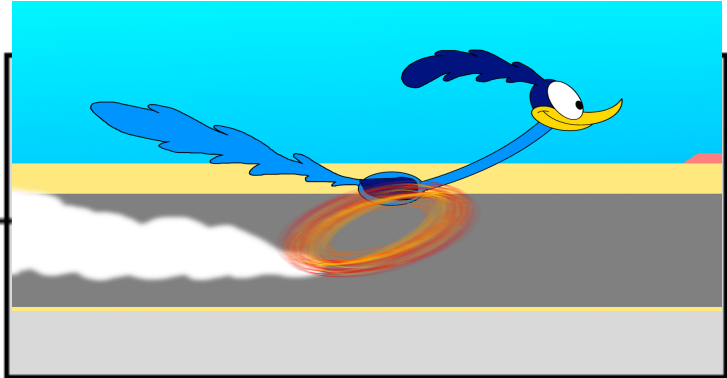
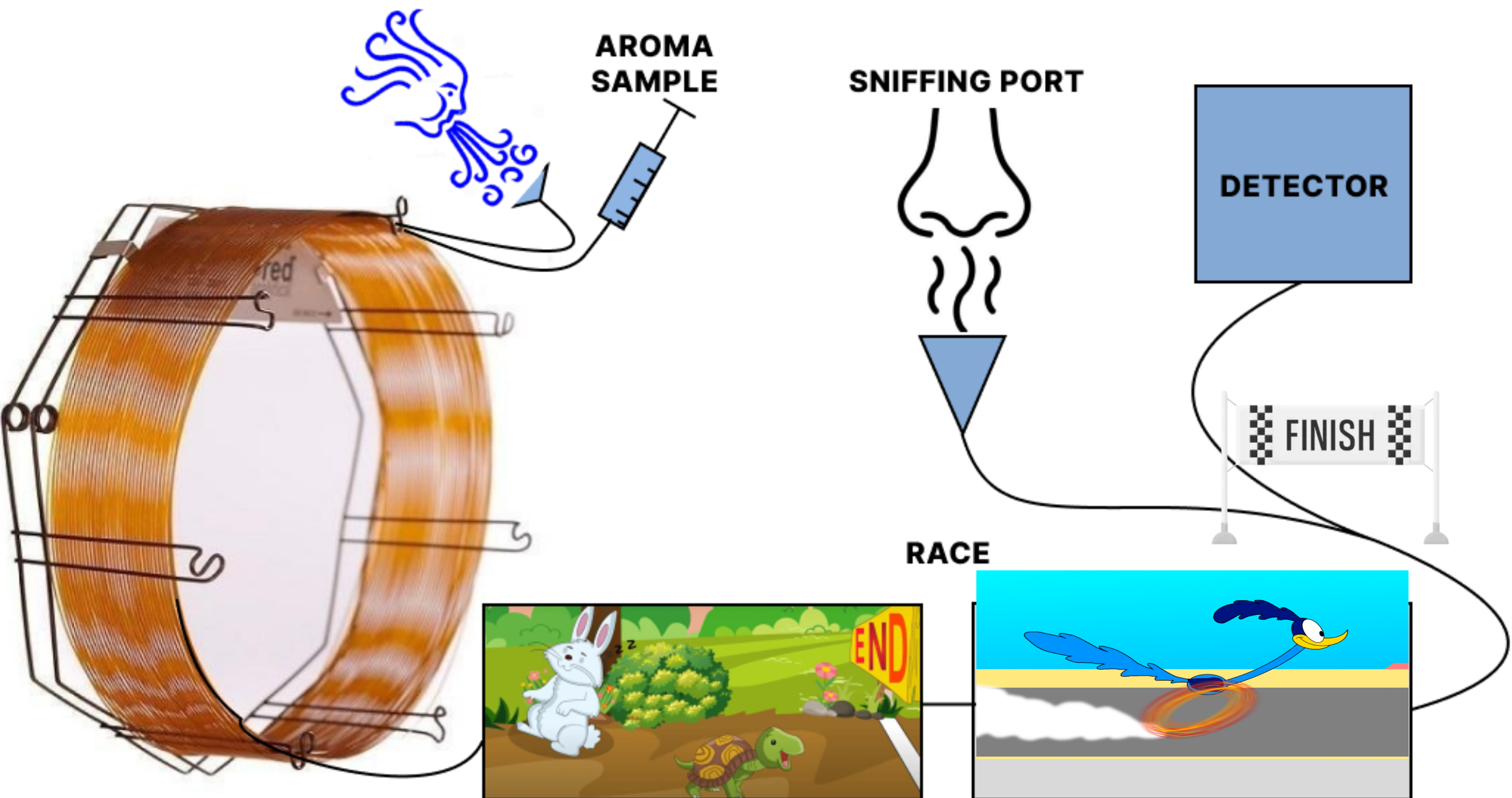


EUROLAB
Laboratory Service

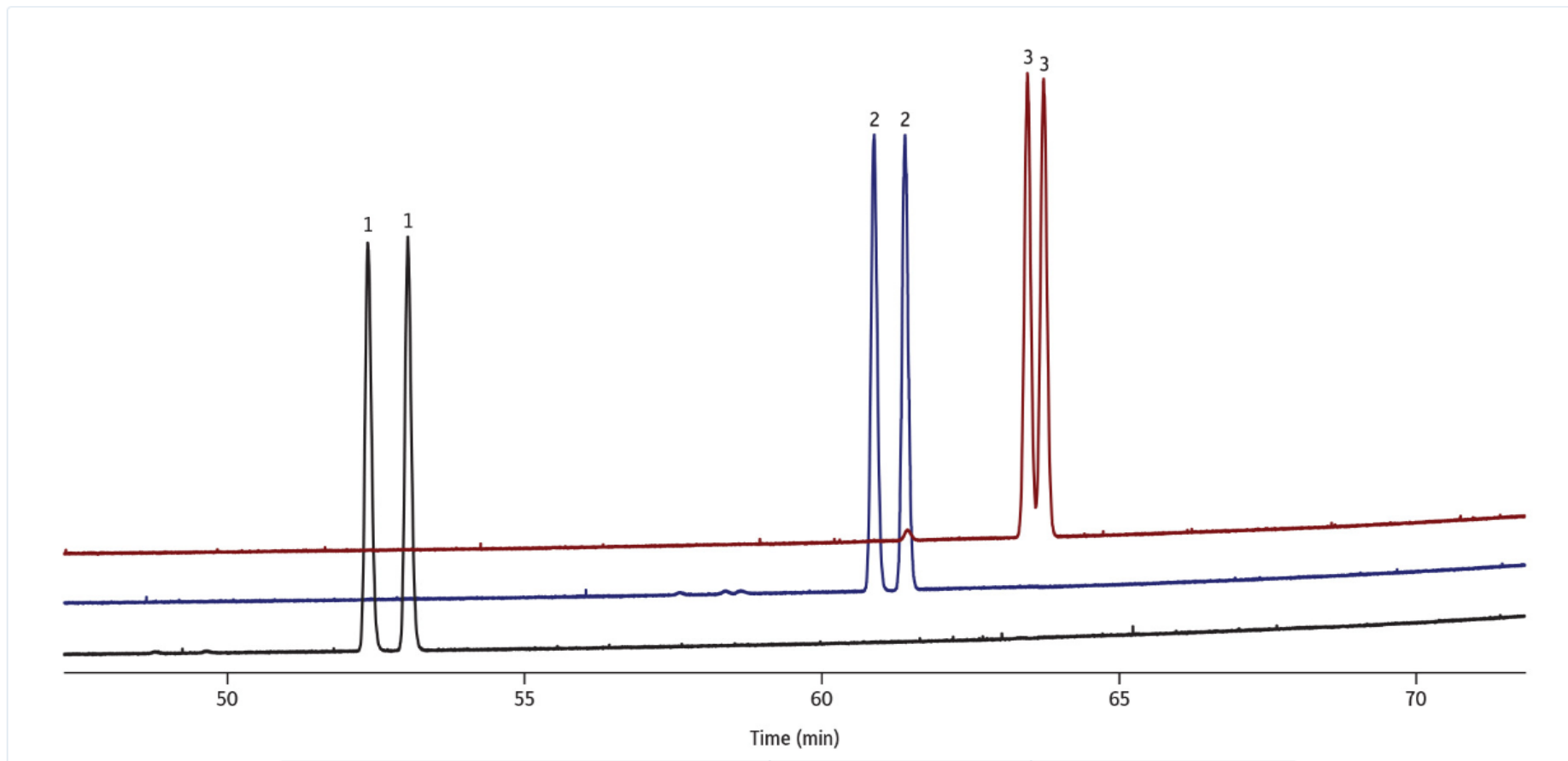
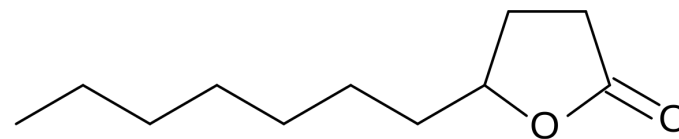


Column



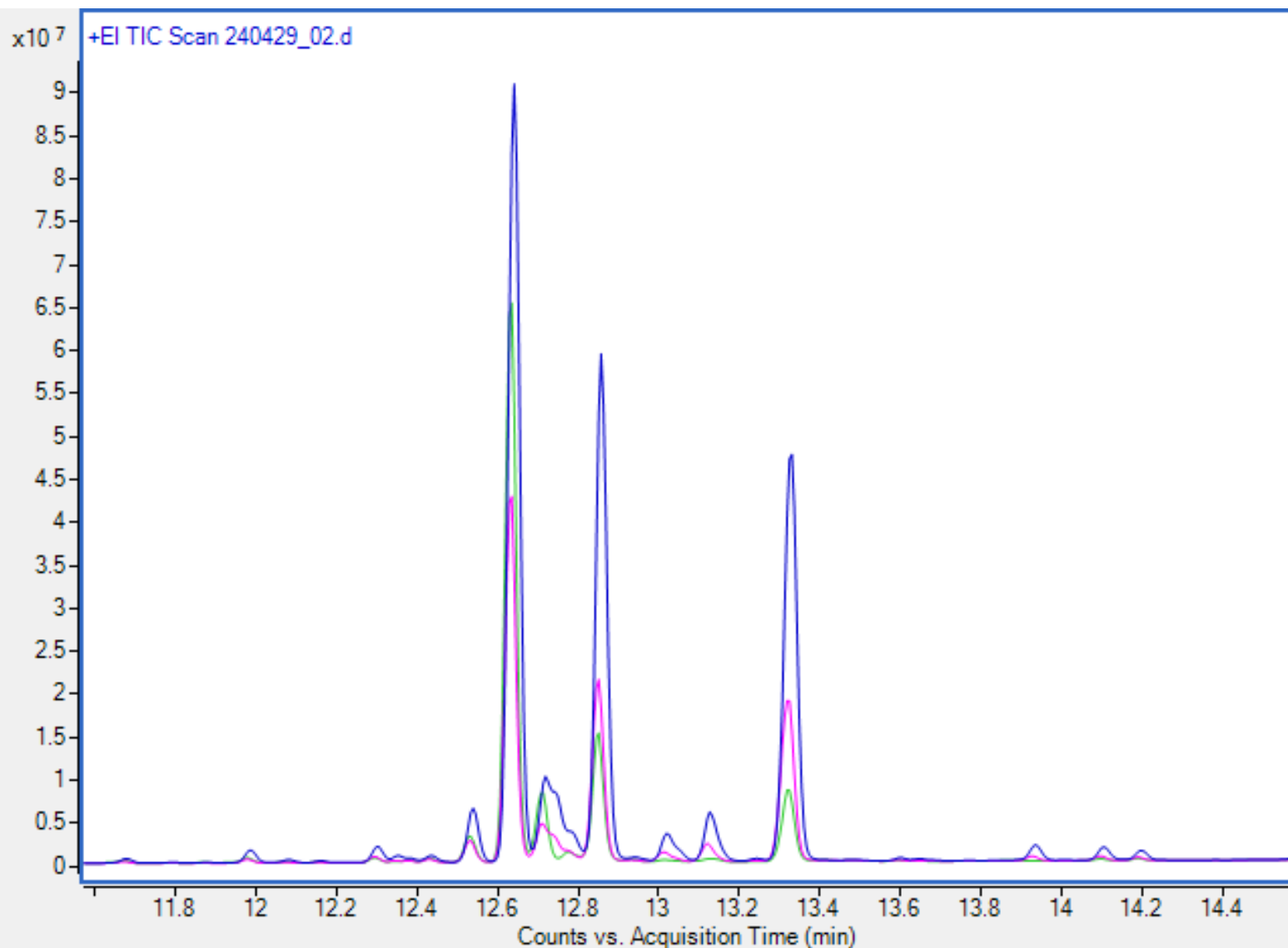


GC MS of 3 lactones



Peaks	t _R 1	t _R 2
1. (±)-γ-Nonalactone	52.365	53.038
2. (±)-γ-Undecalactone	60.879	61.399
3. (±)-δ-Decalactone	63.463	63.733

GC MS of Iso E Super vs. Iso Gamma Super vs. Molecule 01

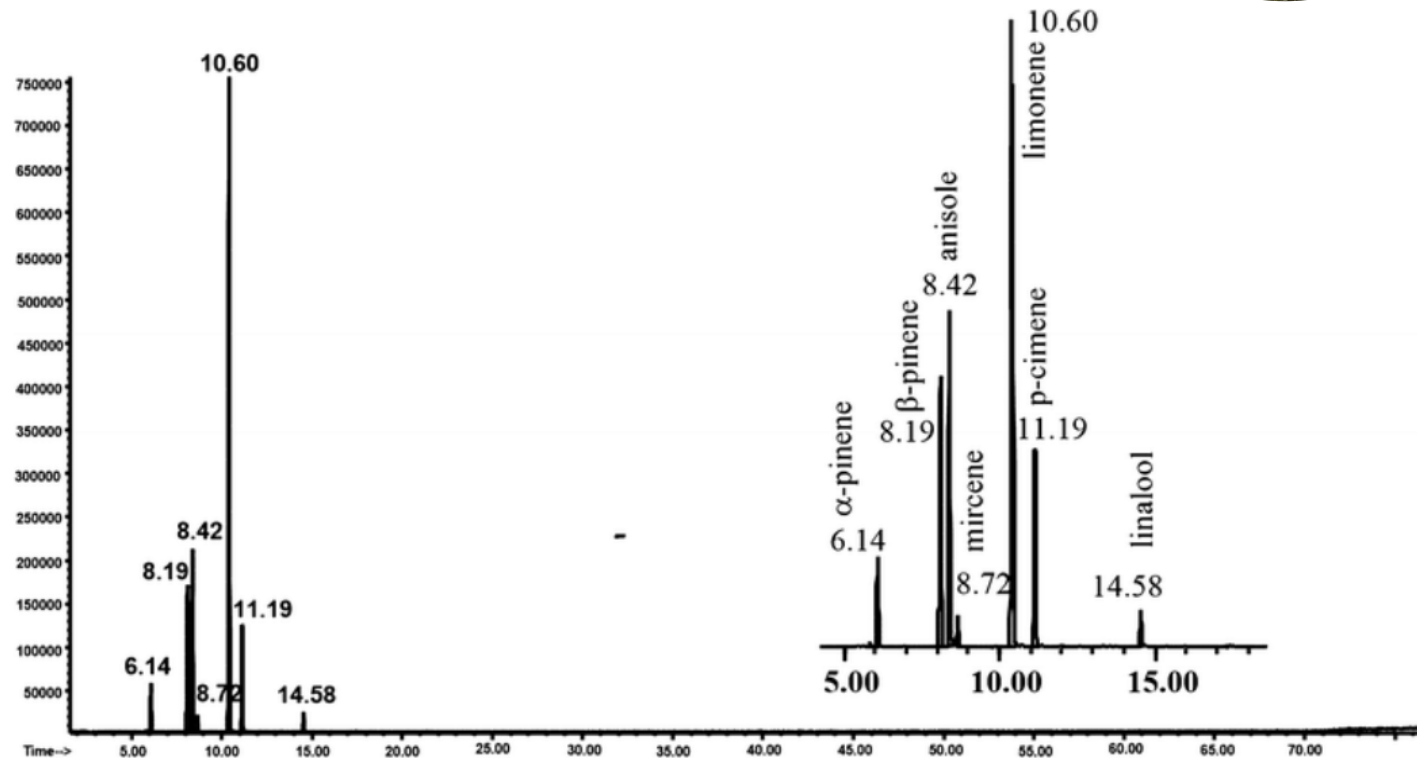


— ISO E SUPER TOCO 2019
— MOLECULE 1
— ISO GAMMA SUPER TOCO 2022

**GC
of
Natural
Ingredients**



Bergamot Oil GC-MS



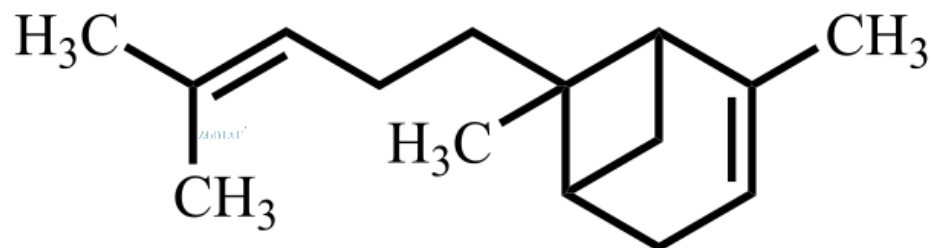
GC-MS analysis of the gaseous phase of bergamot essential oil at 0 °C (α -pinene tR = 6.14 min; β -pinene tR = 8.19 min; anisole tR = 8.42 min; mircene tR = 8.72 min; limonene tR = 10.60 min; p-cimene tR = 11.19 min; linalool tR = 14.58 min)

BERGAMOT OIL GC-MS

No	Components	%
1	BERGAMOTENE ALPHA	0.28
2	CADINENE DELTA	0.33
3	CARYOPHYLLENE TRANS	0.32
4	CAMPHENE	0.02
5	CITRONELLYL ACETATE	0.05
6	CYMENE PARA	0.35
7	DECANAL	0.04
8	DIMETHYL-2,6-OCTADIEN-1-OL-2,7 + BETA-BISABOLENE	1.43
9	FARNESENE (Z) BETA	0.07
10	GERANIOL	0.04
11	GERANYL ACETATE	0.24
12	HEXANAL	0.02
13	HEXENAL- (E) - 2	0.01
14	LIMONENE	32.28
15	LINALOOL	16.27
16	LINALYL ACETATE	37.39
17	METHYL-5-HEPTEN-2-ONE-6	0.01
18	MUUROLENE GAMMA	0.05
19	MYRCENE	0.78
20	NERAL	0.36
21	NEROL	0.03
22	NERYL ACETATE	0.02
23	NONANAL	0.02
24	OCIMENE-(E) BETA	0.14
25	OCIMENE-(Z) BETA	0.02
26	OCTANAL	0.03
27	OCTYL ACETATE	0.09
28	PELLANDRENE BETA	0.15
29	PINENE ALPHA	0.81
30	PINENE BETA	3.02
31	SABINENE	0.55
32	TERPINENE ALPHA	0.07
33	TERPINENE GAMMA	4.12
34	TERPINEOL ALPHA + ALPHA-TERPINYL ACETATE	0.18
35	TERPINOLENE	0.18
36	THUJENE ALPHA	0.23
	TOTAL	100

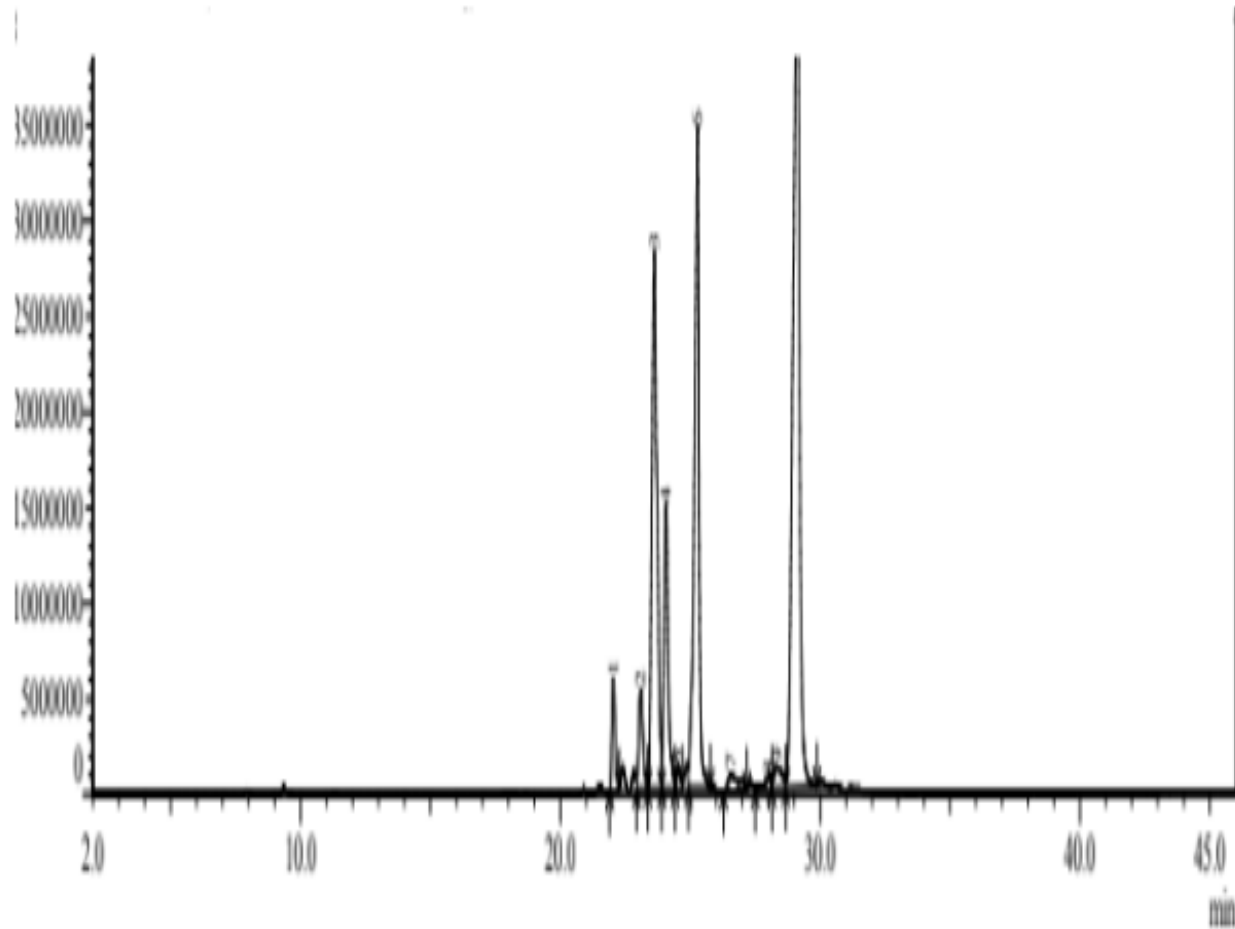
NATURAL OCCURRENCE OF BERGAMOTENE

DON'T BE FOOLED!



- basil oil CO₂ sweet @ 9.60%
- basil oil sweet @ 6.76%
- bergamot oil @ 0.162-0.437%
- carrot seed oil @ 0.73%
- galangal root oil @ 1.60%
- helichrysum italicum oil america @ 2.01%
- lemon oil expressed italy @ 24.50%
- phoebe oil brazil @ 2.54%
- sandalwood oil east indian @ 0.12%

Patchouli Oil GC-MS



PATCHOULI OIL GC-MS

No	Components	%
1	BULNESENE ALPHA + DELTA-GUAIENE	2.34
2	BULNESENE OXIDE	0.14
3	CARYOPHYLLENE BETA	20.64
4	CARYOPHYLLENE OXIDE	0.3
5	COPAENE ALPHA	2.01
6	ELEMENE BETA	6.08
7	GUAIENE OXIDE	0.11
8	GURJUNENE BETA	0.04
9	PATCHOULENE ALPHA	22.2
10	PATCHOULENE BETA	13.75
11	PATCHOULENOL NOR	1.18
12	PATCHOULENONE	0.07
13	PATCHOULI ALCOHOL	33.74
14	PATCHOULI OXIDE	0.06
15	PATCHOULI PYRIDINE	0.05
16	POGOSTOL	0.44
TOTAL		103.15

Chemical and Olfactory Analysis of the Volatile Fraction of *Ocimum gratissimum* Concrete from Madagascar

Laure Gilles^[a, b] and Sylvain Antoniotti^{*[a]}

The chemical composition of the volatile fraction of *Ocimum gratissimum* concrete (romba) from Madagascar has been determined for the first time by GC/MS and GC-FID. A methyl cinnamate chemotype has been determined for this material, along with a set of compounds typical in essential oils and extracts from plants of the *Ocimum* genus. Variability was mostly observed on terpenes and terpenoids components. GC-O-MS was also used for a sensory evaluation of this material

performed by a master perfumer. The chemical composition of this *O. gratissimum* extract was then compared with literature data to assess subtle differences between chemotypes of the same species and other species of the same genus within natural variability. A mapping illustrates the occurrence of the cinnamate chemotype in Eastern Africa, India and now Madagascar, while other origins generally present eugenol, thymol, camphor, or linalool chemotypes.

SNIFFING PORT



Table 4. Assignment of olfactory notes to molecules during the GC-O session by comparison with GC/MS results. Red: high interest, orange: moderate interest, green: low interest.

Entry	RI	Olfactory notes	Molecule
1	961	Blackcurrant, passion fruit, fruity	Not detected
2	979	Aldehyde, metallic, beautiful, pure, fresh, pear	1-Octene-3-one
3	1022	Woody, capaiba	<i>p</i> -Cymene
4	1024	Herbal, myrtle, rosemary, sage	<i>L</i> -limonene/1,8-cineole
5	1095	Green, watery, floral, lotus	Linalool
6	1141	Aldehyde, fresh, floral rose	Camphor
7	1195	Anise, fennel	Estragole
9	1247	Anise, almost jasmona	<i>p</i> -Anisaldehyde
10	1254	Blackcurrant buds, very beautiful	2-Phenylethyl acetate
11	1299	Woody, very beautiful, copaiba fat	Methyl (<i>Z</i>)-cinnamate
12	1348	Light grass	α -Cubebene
13	1356	Eugenol	Eugenol
14	1376	White floral fruity, pineapple, jasmine	Methyl (<i>E</i>)-cinnamate
15	1393	Lili, vanillin, vanitrop	Vanilline
16	1452	Woody, spicy, isoeugenol,	α -Humulene
17	1454	Fruity, tropical, passion fruit	(<i>E</i>)- β -Farnesene
18	1521	Woody, blond, cedar of Chile	β -Sesquiphellandrene
19	1548	Slightly spicy	Allyl (<i>E</i>)-cinnamate



Orange Oil GC-MS

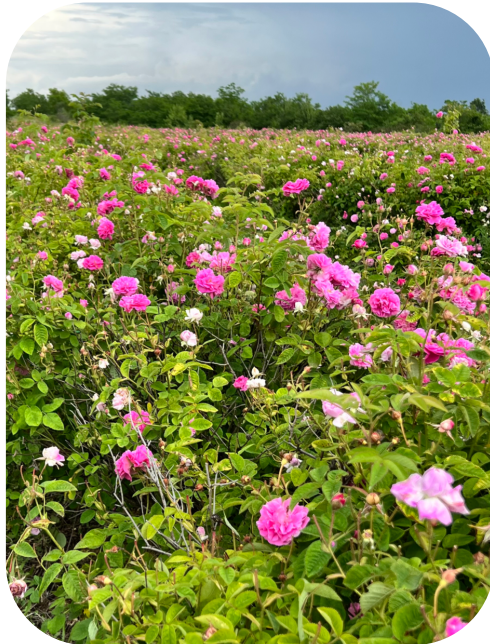


ORANGE OIL GC-MC			GRAPEFRUIT OIL GC-MS		
No	Components	%	%	Components	
1	CARYOPHYLLENE BETA	0.02	0.53	CARYOPHYLLENE BETA	
2	CITRONELLAL	0.06	0.06	CITRONELLAL	
3	CITRONELLYL ACETATE	0.01	0.05	CITRONELLYL ACETATE	
4	DECANAL	0.43	0.27	DECANAL	
5	DECYL ACETATE	0.01	0.15	DECYL ACETATE	
6	GERANIAL	0.13	0.08	GERANIAL	
7	GERANYL ACETATE	0.01	0.14	GERANYL ACETATE	
8	HUMULENE ALPHA	0.00	0.05	HUMULENE ALPHA	
9	LIMONENE	93.71	85.09	LIMONENE	
10	LINALOOL	0.37	0.20	LINALOOL	
11	MYRCENE	1.87	3.01	MYRCENE	
12	NERAL	0.09	0.06	NERAL	
13	NERYL ACETATE	0.01	0.01	NERYL ACETATE	
14	NOOTKATONE	0.02	0.18	NOOTKATONE	
15	OCIMENE-(E) BETA	0.03	0.63	OCIMENE-(E) BETA	
16	OCTYL ACETATE	0.00	0.07	OCTYL ACETATE	
17	PELLANDRENE ALPHA	0.09	0.08	PELLANDRENE ALPHA	
18	PINENE ALPHA	0.48	0.74	PINENE ALPHA	
19	PINENE BETA	0.04	0.14	PINENE BETA	
20	SABINENE	0.79	1.64	SABINENE	
21	TERPINEN-4-OL	0.01	0.12	TERPINEN-4-OL	
22	TERPINEOL ALPHA	0.07	0.06	TERPINEOL ALPHA	
23	TERPINOLENE	0.08	0.10	TERPINOLENE	
24	THUJENE ALPHA	0.01	0.03	THUJENE ALPHA	
25	VALENCENE	0.10	0.08	VALENCENE	
26	CADINENE DELTA	0.02	0.19	CADINENE BETA	
27	CADINENE GAMMA	0.01	0.05	COPAENE BETA	
28	CARENE-3 DELTA	0.41	0.11	CYMENE-PARA + ALPHA-TERPINENE	
29	DODECANAL	0.06	0.01	GERANYL BUTYRATE	
30	GERMACRENE D	0.02	0.04	LINALOOL OXIDE	
31	NEROL	0.02	0.01	LINALOOL-(Z) OXIDE	
32	NONANAL	0.06	0.03	OCTADECANE	
33	OCTANAL	0.52	0.07	PENTADECANE	
34	OCTANOL	0.03	0.16	TERPINENE BETA	
35	SABINENE-(E) HYDRATE	0.03			
36	SINENSAL ALPHA	0.02			
37	SINENSAL BETA	0.03			
38	UNDECANAL	0.02			
	TOTAL	99.67	94.24	TOTAL	

Grapefruit Oil GC-MS



Rose Oil Bulgaria GC-MS



ROSE OIL BULGARIA GC-MS

No	Components	%
1	CITRONELLOL	38.22
2	CITRONELLYL ACETATE	0.45
3	EUGENOL	0.82
4	GERANIOL	14.41
5	GERANYL ACETATE	0.74
6	HEPTADECANE	0.19
7	LINALOOL	3.14
8	METHYL ISOEUGENOL	1.71
9	NEROL	0.05
10	PHENETHYL-2 ALCOHOL	0.13
11	PINENE ALPHA	0.38
12	AMYL ALCOHOL	0.02
13	BENZYL BENZOATE	0.10
14	BERGAMOTENE BETA	0.17
15	CARYOPHYLLENE BETA	0.77
16	CITRONELLYL FORMATE	0.13
17	CYMENE-PARA	0.09
18	ELEMENE BETA	0.08
19	EUDESMOL	0.07
20	FARNESENE BETA	0.20
21	FARNESOL (E,E)	1.98
22	FARNESOL (Z,Z)	0.21
23	GERANYL FORMATE	0.06
24	GUAIENE ALPHA	0.50
25	HEPTANAL	0.09
26	HEXANAL	0.03
27	HEXANOL	0.26
28	HEXEN-1-OL (Z)-3	0.01
29	HUMULENE ALPHA	0.37
30	LIMONENE	0.13
31	METHYL-5-HEPTEN-2-ONE-6	0.50
32	MUUROLENE ALPHA	0.08
33	NARDOSTACHYOL	0.17
34	OCTANOL-3	0.06
35	PENTADECANE	0.70
36	PROPYL-1,8-DIMETHYL-7-ISO NAPHTHALENONE	1.12
37	ROSE OXIDE (E)	1.39
38	SABINENE	0.18
39	SELINENE BETA	0.53
40	TERPINEN-4-OL	0.41
41	TERPINEOL ALPHA	0.94
TOTAL		71.97

ROSE OIL&ABSOLUTE TURKEY GC-MS

No	Components	% OIL	% ABS
1	CITRONELLOL	35.23	9.91
2	CITRONELLYL ACETATE	0.70	
3	EUGENOL	1,18	1.52
4	GERANIOL	22.19	3.71
5	GERANYL ACETATE	2.00	
6	HEPTADECANE	0.90	
7	LINALOOL	0.53	
8	METHYL ISOEUGENOL	1.97	0.69
9	NEROL	10.26	1.43
10	PHENETHYL-2 ALCOHOL	2.30	78.38
11	PINENE ALPHA	0.80	
12	GERMACRENE-D	0.45	
13	HENEICOSANE	4.85	
14	NONADECANE	13.85	4.35
15	NONADECANE-9	2.79	
TOTAL		98.82	99.99

Rose Oil & Absolute Turkey GC-MS



Table 1: Chemical composition and odor description of constituents of *J. grandiflorum* absolute sample from India.

Compound [#]	% ⁺	RI [*]	Odor [§]
<i>cis</i> -3-Hexenol	0.01	860	Green, fresh-grass
6-Methyl heptan-2-one	0.01	957	Green, herbaceous, weak oily
<i>cis</i> -3-Hexenyl acetate	0.01	1005	Intense green, weak fruity, pungent
Benzyl alcohol	1.3	1032	Faint aromatic, weak floral
<i>trans</i> -Linalool oxide	0.5	1071	Fresh-floral, weak sweet-citric
<i>cis</i> -Linalool oxide	0.41	1084	Fresh-floral, citric-notes
Methyl benzoate	0.08	1088	Fragrant-fruity
Linalool	8.2	1093	Fresh-floral, sweet-fruity-woody, lavender-notes
Phenylethyl alcohol	0.02	1105	Floral, rose-like, fragrant-honey-notes
Benzyl acetate	23.7	1160	Floral-fruity, fresh-sweet-notes
<i>p</i> -Cresol	0.6	1169	Medicinal-aromatic
α -Terpineol	0.9	1188	Fragrant-floral, weak fruity with lilac-notes
Methyl salicylate	0.08	1191	Fragrant-minty, sweet-spicy, wintergreen-notes
Phenylethyl acetate	0.06	1194	Sweet-fruity, rose-honey-notes
Nerol	0.8	1229	Floral, weak rose-notes, sweet-fruity
Chavicol	0.02	1248	Sweet-phenolic, anise-like, green-minty-notes
Geraniol	1.0	1251	Rose-notes, sweet-floral, weak fruity
Indole	1.8	1291	Unpleasant-fecal, musty-cadaverous-floral in dilution
Eugenol	2.5	1357	Spicy, strong clove-cardamon-notes
<i>trans</i> -Jasmone	0.03	1387	Floral-jasmine-like, warm-fruity, weak spicy
<i>cis</i> -Jasmone	1.9	1390	Intense jasmine-like, warm-floral, weak fruity
Methyl anthranilate	1.0	1402	Fruity, grape-like
Isoeugenol	0.1	1405	Spicy, intense clove-like, sweet and woody undertones
δ -Jasmine lactone	1.1	1489	Jasmine-like, warm-floral
α -(<i>E,E</i>)-Farnesene	1.1	1508	Weak floral
<i>trans</i> -Nerolidol	0.3	1561	Floral-fruity, rose-apple- and green-citrus-notes, woody-waxy
<i>cis</i> -3-Hexenyl benzoate	0.9	1565	Green-herbal, weak woody
<i>cis</i> -Methyl jasmonate	0.6	1647	Floral-sweet, herbaceous
Benzyl benzoate	20.7	1758	Sweet-balsamic, faint-floral
Benzyl salicylate	0.1	1887	Faint-sweet, weak herbaceous-medicinal
Methyl palmitate	1.4	1918	Fatty-oily
Phytol	10.9	1941	Weak floral-balsamic, sticky side-notes
Isophytol	5.5	1946	Weak floral-balsamic
Geranyl linalool	3.0	1952	Floral, rose-geraniol-lavender-notes, weak fruity
Methyl linoleate	2.8	2094	Fatty-oily
Methyl oleate	0.8	2122	Fatty-oily
Phytyl acetate	5.3	2216	Faint-floral-balsamic

[#]in order of their retention-times.

⁺relative %-peak area of GC-FID analyses using an apolar column.

^{*}retention indices using an apolar OV-5-type column.

[§]odor descriptions in accordance to olfactory evaluations by perfumers and odor-trained chemists as well as published data [2, 22-25].

See Baccarat Rouge further class book example of Jasmine content

Jasmine grandiflorum Absolute (India) Complete GC-MS



Jasmine grandiflorum Absolute (Egypt)



Table III. Average percentages of the major components of jasmin absolute for crop years 1986-1990

Constituent	1986	1987	1988	1989	1990
benzyl alcohol	0.8	0.9	0.9	0.8	0.6
linalool	4.9	4.5	6.0	5.8	4.5
benzyl acetate	21.1	26.2	26.7	26.3	24.0
indole	3.4	3.3	4.2	4.5	4.4
eugenol	2.9	2.5	3.4	2.9	3.4
cis-jasmone	2.4	2.5	2.7	2.5	3.3
farnesene	3.0	2.2	2.5	2.1	3.5
cis-3-hexenyl benzoate	2.0	1.4	1.3	1.5	1.3
benzyl benzoate	12.0	12.6	14.4	13.8	11.2
iso-phytol	8.6	7.0	7.9	8.5	7.6
phytyl acetate	10.1	7.9	7.8	8.1	7.9
methyl linoleate	4.2	3.6	3.3	3.3	3.4
phytol	12.3	14.8	9.4	14.5	11.3

Table IV. Average percentage of the major components of jasmin absolute for the 1991 season by months

	July	August	Sept.	Average
benzyl acetate	25.08	26.24	25.18	25.50
benzyl alcohol	0.35	0.38	0.41	0.38
benzyl benzoate + phytol	24.50	23.23	25.03	24.25
cis-3-hexenyl benzoate	1.20	1.19	1.16	1.18
cis-jasmone	3.05	3.20	3.00	3.08
eugenol	3.26	3.05	2.77	3.03
farnesene	3.37	3.53	4.41	3.77
indole	5.49	5.40	5.52	5.47
isophytol	8.10	8.07	7.93	8.03
linalool	4.77	5.22	3.78	4.59
methyl linoleate	3.81	3.74	3.80	3.78
phytyl acetate	7.87	7.43	7.04	7.45
all others	9.15	9.32	9.97	9.49

Table V. Average percentage of the major components of jasmin absolute for the 1991 season by geographic location in Egypt

	Qoutour	Haraneya	Kom El Nagar	Bassyun	Gharbia	Average
benzyl acetate	24.42	25.07	26.04	25.62	26.38	25.50
benzyl alcohol	0.43	0.49	0.40	0.21	0.37	0.38
benzyl benzoate + phytol	24.80	23.59	25.25	23.39	24.23	24.25
cis-3-hexenyl benzoate	1.19	1.31	1.22	1.14	1.08	1.18
cis-jasmone	2.79	3.51	2.72	3.67	2.72	3.08
eugenol	3.10	3.05	3.11	2.84	3.03	3.03
farnesene	3.95	3.48	3.68	3.94	3.80	3.77
indole	5.30	5.32	4.62	6.49	5.62	5.47
isophytol	8.35	7.86	8.11	7.81	8.04	8.03
linalool	4.45	4.73	4.71	4.40	4.62	4.59
methyl linoleate	3.88	3.67	3.85	3.70	3.84	3.78
phytyl acetate	7.61	7.97	7.32	7.18	7.15	7.45
all others	9.73	9.95	8.97	9.61	9.12	9.49

flowers are picked, or the month of picking in a given season. Generally, the oil content is highest in mid-season and when picking is done prior to 10 AM certain other trends do emerge, such as the content of eugenol and phytol acetate decreasing steadily throughout the season, with July having the most amount and September the least. Farnesene tends to increase steadily throughout the season, with September revealing the highest content. The linalool and benzyl acetate content tends to be highest at mid-season and the benzyl benzoate and phytol the lowest at mid-season (see Table IV).

Geographical location of the

Jasmine sambac Absolute GC-MS



JASMINE SAMBAC ABS GC-MS

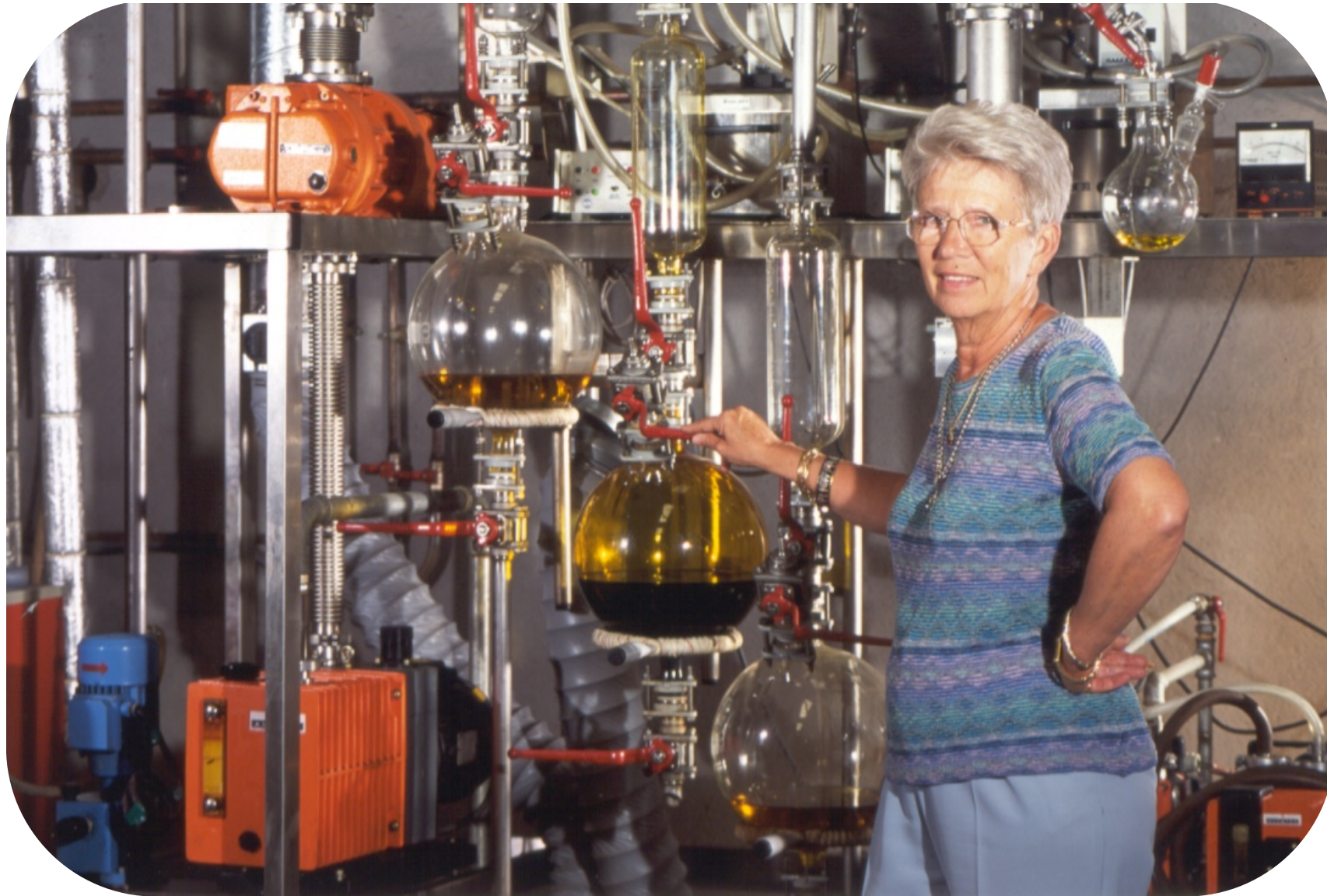
No	Components	%
1	BENZYL ACETATE	21.2
2	BENZYL ALCOHOL	1.05
3	BENZYL BENZOATE	1.5
4	EUGENOL	0.08
5	FARNESENE ALPHA	12.4
6	GERANIOL	0.08
7	JASMONE-(Z)	0.45
8	LINALOOL	7.4
9	METHYL ANTHRANILATE	4.9
10	PHYTOL	0.34
11	PHYTOL-ISO	0.35
12	PHYTYL ACETATE + GERANYL LINALOOL	2.55
13	CINNAMYL-(E) BENZOATE	2.43
14	CINNAMYL-(Z) BENZOATE	0.16
15	CRESOL-PARA	0.08
16	FARNESOL-(E,E)	1.3
17	FARNESYL-(E,E) ACETATE	0.5
18	HEXEN-1-YL-3-(Z) BENZOATE	2.5
19	HEXEN-1-YL-3-(Z)ACETATE	0.14
20	LINALYL ACETATE	trace
21	METHYL BENZOATE	0.3
22	METHYL LINOLENATE	4.3
23	METHYL PALMITATE	0.95
	METHYL STEARATE + METHYL	
24	OLEATE + METHYL ACETYL ANTHRANILATE	2
25	PHENETHYL-2 ACETATE	2.35
26	PHENETHYL-2 ALCOHOL	2.15
27	PHENETHYL-2 BENZOATE	1.26
	TOTAL	72.72

JASMINUM GRANDIFLORUM ABS GC-MS

No	Components	%
1	BENZYL ACETATE	24.15
2	BENZYL ALCOHOL	1.06
3	BENZYL BENZOATE	17.85
4	EUGENOL	2
5	FARNESENE ALPHA	0.01
6	GERANIOL	0.03
7	JASMONE-(Z)	7.9
8	LINALOOL	4.33
9	METHYL ANTHRANILATE	0.39
10	PHYTOL	7.8
11	PHYTOL-ISO	1.95
12	PHYTYL ACETATE + GERANYL LINALOOL	2.45
13	FARNESOL	0.22
14	GERANYL LINALOOL	2.8
15	INDOLE	1.07
16	JASMIN LACTONE	0.7
17	METHYL JASMONATE	5.12
18	NEROLIDOL	1.84
	TOTAL	81.67

Jasmine grandiflorum Absolute GC-MS





Monique Remy

Scientist who used GC to bring purity and credibility into Grasse

CHRISTOPHE LAUDAMIEL

A GREAT LADY
IN PERFUMERY

monique remy

HOMAGE TO MONIQUE REMY
FOR THIRTY YEARS OF EXCELLENCE

**Second Half
of
SESSION 1**

GC
of a
PERFUME

TRIMROSE PERFUME OIL
THE BODY SHOP
POLYSANTOL 16-10-97
POISON 1002
PEAL & CO
PANTHERE
de la Renta
tif. 7/25/91
V. MANCINI
ORANGE GELEE
OPIUM EDT
NIVEA CREAM
NIGHT FLIGHT
CYL ACETA

P

17

PEAL & CO

PANTHERE

OUI-NON

OPIUM EDT

OCEAN DREAM

NWT D'ORIENT

NIVEA CREAM

NIGHT FLIGHT

NEBOLL

CYL ACETA

SAILORS by THE ZOO (latest edition No92, 2018; 1st private edition 2002)

Perfumer(s): Christophe Laudamiel - a Re:Mix of DECLARATION for MEN, Jean-Claude Ellena Cartier 1998

Recording Studio

DSM-Firmenich

Packer : The Zoo

© COPYRIGHT 1998-2022 entities above

FOR EDUCATIONAL PURPOSES ONLY

NOT FOR RESALE IN WHOLE NOR IN PARTS

Line #	REAL FORMULA	GC Amount	INGREDIENT NAME	CAS
1	0.10		Algues Abs Deco 10% DPG	
2	0.40	0.1962	Amberketal/Z11	67010-56-4
3	10.00	9.9144	Ambrox Super	6790-58-5
4	0.50	0.4581	Anethole 10% IPM	104-46-1
5	4.00		Bergamot Distilled High Grade	
6	2.00		Bergamot Essence	
7	1.00	1.0221	Cashmeran	33704-61-9
8	2.00		Cedrol	
9	0.40		Chamomille Oil Blue 10% IPM	
10	0.30		Cinnamon Leaf Oil	
11	0.40	0.1147	Citral (decomposes easily)	5392-40-5
12	2.00	1.3468	Citronellol (Laevo mostly)	106-22-9
13	0.20		Clove Bud Oil	
14	1.00		Confidential DP	
15	1.80		Confidential LW	
16	0.30	0.4424	Coumarin	91-64-5
17	0.30		Cumin Oil 10% IPM	
18	0.20		Cyclamal	
19	0.50		Ethyl Maltol 1% IPM (at times too small)	

20	0.50	0.6845	Firsantol ®	104864-90-6
21	0.20	0.2598	Floralozone	67634-15-5
22	0.30		Ginger CO2	
23	0.50		Grapefruit Base Heart	
24	2.00		Grapefruit Oil	
25	5.00	7.1190	Helvetolide ®	141773-73-1
26	3.00	2.9829	Ionone Beta	79-77-6
27	30.00	33.2758	Iso E Super	54464-57-2
28	0.20	0.1079	Isocyclocitral 10% IPM (small amount)	1335-66-6
29	10.00	10.0388	Javanol ®	198404-98-7
30	1.00		Juniper Rectified Oil	
31	2.00		Lemon Oil Italian	
32	2.00		Mandarin Oil Sicilian	
33	0.50	0.2589	Melonal 10% IPM (small)_	106-72-9
34	0.40	0.0981	Methyl Anthranilate 10% IPM	134-20-3
35	10.00	8.9465	Methyl Dihydro Jasmonate ®	24851-98-7
36	0.20		Miel Blanc Base 10% IPM	
37	0.05	0.0181	Myrac Aldehyde	37677-14-8
38	0.50	0.4929	Norlimbanol High Grade	70788-30-6
39	0.50		Nutmeg oil	

40	0.50		Orris Aldehyde 1PCT 10% IPM	
41	0.30		Oxane 1% IPM	
42	1.00		Pepper Black Oil	
43	2.00	1.8708	Phenylethyl Alcohol	60-12-8
44	0.50		Pimento Leaf Oil 10% IPM	
45	0.50	1.0048	Polysantol ®	107898-54-4
46	0.20		Rhubofix 10% IPM	
47	4.00		Sandalwood Oil India	
48	1.20		Stabilizer	
49	0.60	0.5763	Terpinolene 10% IPM	586-62-9
50	0.10	0.0359	Vanillin	121-33-5
51	0.20	0.1204	Veramoss/Evernyl ®	4707-47-5
52	0.40	0.1716	Violiff ®	87731-18-8
53	0.10		Wormwood Oil	
54	END FORMULA	0.0084	Ald C-10	112-31-2
55		0.0030	Aldehyde C9	124-19-6
56		0.0089	Benzyl Benzoate	120-51-4
57		0.0204	Bisabolol Oxide A	22567-36-8
58		0.0068	Borneol	507-70-0
59		0.0023	Bornyl Acetate	76-49-3
60		0.0078	Bourbonene Beta	5208-59-3
61		0.0125	Cadinene Delta	483-76-1
62		0.0180	Camphene	79-92-5
63		0.0034	Camphor	76-22-2

64		0.1152	Carene 3 Delta	13466-78-9
65		0.0121	Carveol	99-48-9
66		0.0285	Carvone	99-49-0
67		0.5843	Caryophyllene	87-44-5
68		0.6015	Cedrene Alpha	469-61-4
69		0.0075	Cineole	470-82-6
70		0.0282	Citronellyl Acetate	150-84-5
71		0.0202	Citronellyl Formate	0141-09-03
72		0.0066	Citronellyl Isobutyrate	97-89-2
73		0.0468	Copaene Alpha	3856-25-5
74		0.0820	Cuminic Aldehyde 10% IPM	0122-03-02
75		0.0287	Curcumene Alpha	644-30-4
76		0.3843	Cymene Para	99-87-6
77		0.6620	DPG	110-98-5
78		0.0194	Elemene Beta	515-13-9
79		0.0254	Elemene Delta	20307-84-0
80		0.6918	Eugenol	97-53-0
81		0.0671	Eugenol Acetate	93-28-7
82		0.0123	Farnesene Beta	18794-84-8
83		0.0020	Fenchol	1632-73-1

84		0.4505	Geraniol	106-24-1
85		0.0882	Geranyl Acetate	105-87-3
86		0.0094	Geranyl Isobutyrate	2345-26-8
87		0.0155	Germacrene D	23986-74-5
88		0.0231	Humulene Alpha	6753-98-6
89		0.0258	Ionone Alpha	127-41-3
90		0.0156	Ionone Epoxide Beta	23267-57-4
91		4.5950	IPM	110-27-0
92		0.0069	Isocineole	470-67-7
93		0.0239	Isolongifolene	1135-66-6
94		0.0143	Isopropyl Palmitate	142-91-6
95		6.4700	Limonene	138-86-3
96		0.7577	Linalool	78-70-6
97		2.4466	Linalyl Acetate 25% part of Bergamots	115-95-7
98		0.9232	Methyl cedryl Ketone	32388-55-9
99		0.0230	Methyl Cyclogeranate	9548818
100		0.2752	Myrcene Beta	123-35-3
101		0.0736	Myristicin	607-91-0
102		0.0237	Nerol	106-25-2
103		0.0531	Neryl Acetate	0141-12-8
104		0.0062	Ocimene Beta	13877-91-3
105		0.0187	Octyl Acetate	112-14-1

106		0.0064	p-Cymen-8-ol	1197-01-09
107		0.0199	Phellandrene Alpha	99-83-2
108		0.0462	Phellandrene Beta	0555-10-2
109		0.6796	Pinene Alpha	80-56-8
110		0.7800	Pinene Beta	127-91-3
111		0.3094	Sabinene	3387-41-5
112		0.0075	Sabinene Hydrate	546-79-2
113		0.0223	Sabinyl Acetate	3536-54-7
114	Parts from Sandalwood = 3.0764	0.0273	Santalal Alpha	19903-70-9
115		0.0491	Santalene Alpha	512-61-8
116		0.0651	Santalene Beta	511-59-1
117		0.0614	Santalene Epi-Beta	25532-78-9
118		1.6451	Santalol Alpha	115-71-9
119		0.9207	Santalol Beta	77-42-9
120		0.3014	Santalol Epi-Beta	79081-90-6
121		0.0431	Sesquiphellandrene Beta	20307-83-9
122			0.0241	Terpinene Alpha
123		0.7332	Terpinene Gamma	99-85-4
124		0.0703	Terpineol - 4	562-74-3
125		0.0292	Terpineol Alpha	98-55-5
126		0.0129	Terpinyl Acetate Alpha	80-26-2
127		0.0518	Thujene Alpha	2867-05-02

128		0.0458	Thujone	1125-12-8
129		0.4227	Triethyl Citrate	77-93-0
130		0.0616	Zingiberene part of Ginger	495-60-3
END		END GC		
TOTALS	107.85	107.8502678		

© COPYRIGHT 1998-2022 entities above

FOR EDUCATIONAL PURPOSES ONLY

NOT FOR RESALE IN WHOLE NOR IN PARTS

ALLURE EdT Chanel

Launched 1999

Bottle 9001 prior Dec 2023

Perfumer(s)

Recording Studios

Packager

COPYRIGHT©1999-2024 to entities above

NOT TO BE MARKETED IN WHOLE NOR IN PARTS

CHROMATOGRAMME

No	NAME	PCT(%)
1	AMBRETTOLIDE	0.58
2	AMBROX®	0.34
3	BACDANOL®	2.03
4	BENZYL ACETATE	2.12
5	BENZYL ALCOHOL	0.02
6	BENZYL SALICYLATE	4.53
7	CAMPHENE	0.00
8	CARENE-3 DELTA	0.01
9	CARYOPHYLLENE	0.10
10	CEDRYL METHYL ETHER	0.01
11	CITRAL	0.09
12	CITRONELLOL BETA	0.70
13	COUMARIN	0.15
14	CYCLOPENTADECANOLIDE	2.99
15	CYMENE-P	0.13
16	DIHYDROMYRCENOL	0.43

**JOY EdP Dior**

Launched 2018

Bottle 8F(or P)02 5ml, prior Dec 2023

Perfumer(s)

Recording Studios

Packager

COPYRIGHT©2018-2024 to entities above

NOT TO BE MARKETED IN WHOLE NOR IN PARTS

CHROMATOGRAMME

No	NAME	PCT(%)
1	AMBRETTOLIDE	1.32
2	AMBROX®	0.38
3	BACDANOL®	1.62
4	BENZYL ACETATE	1.76
5	BENZYL ALCOHOL	0.05
6	BENZYL SALICYLATE	3.69
7	CAMPHENE	0.00
8	CARENE-3 DELTA	0.04
9	CARYOPHYLLENE	0.07
10	CEDRYL METHYL ETHER	0.02
11	CITRAL	0.04
12	CITRONELLOL BETA	1.54
13	COUMARIN	0.09
14	CYCLOPENTADECANOLIDE	4.76
15	CYMENE-P	0.39
16	DIHYDROMYRCENOL	0.43

J. Polge
CHANEL
CHANELF. Demachy
DIOR
LVMH

17	DIMETHYL BENZYL CARBINYL ACETATE	0.10
18	ETHYL ACETATE	0.00
19	ETHYL VANILLIN	0.06
20	ETHYL LINALOOL	0.70
21	FLORALOZONE®	0.04
22	GALBEX®	0.05
23	GERANIOL	0.38
24	GERANYL ACETATE	0.13
25	HEXYL CINNAMIC ALDEHYDE	4.68
26	METHYL DIHYDRO JASMONATE	16.79
27	HELIONAL®	1.85
28	HELIONAL® DIETHYL ACETAL	0.29
29	HEXENYL-CIS-3 BENZOATE	0.01
30	HEXENYL-CIS-3 SALICYLATE	1.48
31	HUMULENE ALPHA	0.02
32	HYDROXYCITRONELLAL	1.75
33	HYDROXYCITRONELLAL DIETHYL ACETAL	0.34
34	INDOLE	0.06
35	ISO E SUPER	1.73
36	ISOMETHYL IONONE ALPHA	0.49

17	DIMETHYL BENZYL CARBINYL ACETATE	0.39
18	ETHYL ACETATE	0.05
19	ETHYL VANILLIN	0.08
20	ETHYL LINALOOL	2.94
21	FLORALOZONE®	0.14
22	GALBEX®	0.18
23	GERANIOL	0.05
24	GERANYL ACETATE	0.13
25	HEXYL CINNAMIC ALDEHYDE	3.95
26	METHYL DIHYDRO JASMONATE	11.94
27	HELIONAL®	1.46
28	HELIONAL® DIETHYL ACETAL	0.70
29	HEXENYL-CIS-3 BENZOATE	0.02
30	HEXENYL-CIS-3 SALICYLATE	1.92
31	HUMULENE ALPHA	0.01
32	HYDROXYCITRONELLAL	1.05
33	HYDROXYCITRONELLAL DIETHYL ACETAL	0.60
34	INDOLE	0.04
35	ISO E SUPER	2.20
36	ISOMETHYL IONONE ALPHA	0.82

37	JASMONE-CIS	0.19
38	LEAF ALCOHOL	0.00
39	LIFFAROME	0.01
40	LIMONENE	5.13
41	LINALOOL	7.72
42	LINALOOL ETHYL ETHER	0.02
43	LINALOOL OXIDE	0.00
44	LINALYL ACETATE	10.07
45	METHYL BENZOATE	0.02
46	METHYL-N IONONE ALPHA	0.34
47	ETHYLENE BRASSILATE	7.73
48	MYRCENE BETA	0.15
49	NEROL	0.26
50	NERYL ACETATE	0.08
51	OCIMENE BETA	0.03
52	PARADISONE®	5.77
53	PELLANDRENE ALPHA	0.00
54	PELLANDRENE BETA	0.03
55	PHENYLETHYL ALCOHOL	1.28
56	PHENYL ETHYL PHENYL ACETATE	0.38
57	PINENE ALPHA	0.15
58	PINENE BETA	0.60
59	POLYSANTOL®	0.17
60	PRENYL ACETATE	0.01

37	JASMONE-CIS	0.09
38	LEAF ALCOHOL	0.04
39	LIFFAROME	0.03
40	LIMONENE	7.21
41	LINALOOL	5.92
42	LINALOOL ETHYL ETHER	0.03
43	LINALOOL OXIDE	0.01
44	LINALYL ACETATE	7.31
45	METHYL BENZOATE	0.01
46	METHYL-N IONONE ALPHA	0.10
47	ETHYLENE BRASSILATE	8.37
48	MYRCENE BETA	0.25
49	NEROL	0.25
50	NERYL ACETATE	0.07
51	OCIMENE BETA	0.06
52	PARADISONE®	5.81
53	PELLANDRENE ALPHA	0.01
54	PELLANDRENE BETA	0.09
55	PHENYLETHYL ALCOHOL	1.14
56	PHENYL ETHYL PHENYL ACETATE	0.39
57	PINENE ALPHA	0.27
58	PINENE BETA	0.84
59	POLYSANTOL®	0.09
60	PRENYL ACETATE	0.01

61	SABINENE	0.10
62	SANDALAMBER	0.24
63	SANTALENE ALPHA	0.01
64	SANTALENE BETA	0.01
65	SANTALENE EPI BETA	0.01
66	SANTALOL ALPHA	0.25
67	SANTALOL BETA	0.14
68	TERPINENE ALPHA	0.02
69	TERPINENE GAMMA	0.91
70	TERPINOLENE	0.04
71	THUJENE ALPHA	0.04
72	TRIETHYL CITRATE SOLVENT	3.62
73	TRIMOFIX O	1.21
74	UNDECALACTONE GAMMA	0.32
75	VANILLIN	1.14
76	VETIVENENE BETA	0.05

TOTAL INTERMEDIATE	85.84
--------------------	-------

77	AVOBENZONE UV Absorber	1.33
78	BENZYL BENZOATE	0.15
79	BERGAMOTENE ALPHA	0.02
80	BORNYL ACETATE	0.00

61	SABINENE	0.10
62	SANDALAMBER	0.16
63	SANTALENE ALPHA	0.01
64	SANTALENE BETA	0.01
65	SANTALENE EPI BETA	0.00
66	SANTALOL ALPHA	0.49
67	SANTALOL BETA	0.22
68	TERPINENE ALPHA	0.01
69	TERPINENE GAMMA	1.23
70	TERPINOLENE	0.04
71	THUJENE ALPHA	0.05
72	TRIETHYL CITRATE SOLVENT	0.38
73	TRIMOFIX O	1.97
74	UNDECALACTONE GAMMA	0.24
75	VANILLIN	1.40
76	VETIVENENE BETA	0.01

TOTAL INTERMEDIATE	89.63
--------------------	-------

77	AMORPHENE ALPHA	0.02
78	BHT	0.16
79	CANTHOXAL®	0.07
80	CARYOPHYLLENE OXIDE	0.01

81 BOURBONENE BETA	0.01	81 CASHMERAN®	0.43
82 CITRONELLAL	0.00	82 CYCLAMAL	0.03
83 CITRONELLYL ACETATE	0.01	83 DAMASCONE ALPHA	0.01
84 CIVETONE	0.01	84 DECANAL DIETHYL ACETAL	0.01
85 CUBEBENE ALPHA	0.00	85 ETHYL ISOBUTANOATE	0.03
86 CYCLOHEXADECANOLIDE	0.02	86 ETHYL SALICYLATE	0.01
87 DECANAL	0.01	87 HABANOLIDE	1.87
88 DIHYDROLINALOOL	0.09	88 ISOVALENCENOL	0.08
89 DIHYDROLINALOOL ACETATE	0.02	89 KHUSIMOL®	0.10
90 ELEMENE BETA	0.00	90 MAGNOLAN®	0.41
91 ELEMENE DELTA	0.00	91 METHYL ANTHRANILATE	0.01
92 EUDESMOL GAMMA	0.01	92 METHYL METHANTHRANILATE	0.03
93 EUDESMOL-EPI GAMMA	0.00	93 METHYL PIPERONYL KETONE	0.03
94 FARNESENE ALPHA	0.10	94 METHYLANISOLE-P	0.08
95 FARNESENE BETA	0.01	95 MUSCENONE®	0.54
96 FLOROL®	1.06	96 MUSK C-14	0.01
97 GERANYLLINALOOL	0.02	97 OCTISALATE UV Absorber	1.13
98 GUAIA-6,9-DIENE	0.04	98 PARSOL MCX UV Absorber	4.99
99 ISOVALENCENYL ACETATE	0.33	99 PATCHOULOL	0.28
100 MAJANTOL®	2.07	100 TRIPLAL®	0.04

101	MENTHONE	0.03
102	METHYL CEDRYL KETONE	0.60
103	METHYL-N IONONE BETA	0.03
104	NONANAL	0.00
105	OCTYL ACETATE	0.02
106	PHENYLETHYL ISOBUTYRATE	0.15
107	PHYTOL	0.01
108	PHYTYL ACETATE	0.02
109	SANDALORE®	0.08
110	TERPINEOL ALPHA	0.02
111	TERPINEOL-4	0.01
112	TERPINYL ALPHA ACETATE	0.01
113	TERPINYL ALPHA ETHYL ETHER	0.02
114	THUJANOL-4	0.02
115	THUJANOL-4 ETHYL ETHER	0.00
116	VERAMOSS	0.15
117	VETIVONE ALPHA	0.03
118	VETIVONE BETA	0.08

TOTAL

100.00

TOTAL

100.00



BACCARAT ROUGE 540 EdP GC

Maison Francis Kurkdjian

Launched 2015

Bottle prior Nov 2022

Perfumer(s) Francis Kurkdjian

Recording Studios Takasago

Packager self, now LVMH

COPYRIGHT©2015-2023 to entities above.

NOT TO BE MARKETED IN WHOLE NOR IN PARTS

No.	NAME(EN)	PCT(%)
1	Ambrox	18.4235
2	Benzyl acetate	0.0080
3	BHT	0.2664
4	DPG	27.9939
5	Ethyl atrarate	0.1397
6	Ethyl maltol	1.9582
7	Hedione	35.2884
8	Limonene	0.1935
9	Linalool	0.0740
10	Myrcene-beta	0.0045
11	Ocimene-beta	0.0093
12	Octisalate	1.0957
13	Parsol MCX	2.9308
14	Pinene-alpha	0.0011
15	Veramoss	10.9631
16	Avobenzone	0.5874
17	Benzyl Benzoate	0.0412
18	Caffeine	0.0102
19	Dihydrotagetone	0.0112
Total		100.00

COPYRIGHT©2015-2023 to entities above.

NOT TO BE MARKETED IN WHOLE NOR IN PARTS

CLOUD EdP

Ariana Grande

Launched 2018

Bottle prior 2Q 2023

Perfumer(s) Clement Gavarry

Recording Studios Firmenich

Packager Designer Parfums

COPYRIGHT©2018-2023 to entities above.

NOT TO BE MARKETED IN WHOLE NOR IN PARTS

No.	NAME(EN)	PCT(%)
1	Ambrox	7.9860
2	Benzyl acetate	0.0241
3	BHT	0.0851
4	DPG	30.6896
5	Ethyl atrarate	0.0189
6	Ethyl maltol	1.7881
7	Hedione	39.4005
8	Limonene	0.2372
9	Linalool	0.5479
10	Myrcene-beta	0.0049
11	Ocimene-beta	0.0063
12	Octisalate	0.3969
13	Parsol MCX	1.5839
14	Pinene-alpha	0.0048
15	Veramoss	4.4584
16	Allyl cyclohexylpropionate	0.0034
17	Allyl heptanoate	0.0060
18	Ambrettolide	0.0254
19	Anisaldehyde	0.0500
20	Bacdanol	0.0877
21	Benzyl salicylate	0.0040
22	Bourgeonal	0.0104
23	Cedrene-alpha	0.0081
24	Cedrol-alpha	0.0077
25	Citronellol-beta	0.0190
26	Coumarin	0.0118
27	Cyclopentadecanolide	0.0601
28	Cymene-p	0.0033
29	Damascenone-beta	0.0041
30	Damascone-alpha	0.0031
31	Damascone-beta	0.0021
32	Dihydromyrcenol	0.3872
33	Dimethylbenzylcarbinol acetate	0.0211
34	Ethyl 2-methylvalerate	0.0016
35	Ethyl butanoate	0.0009
36	Ethyl Vanillin	0.2498
37	Ethyl linalool	0.6867
38	Florol	0.0336
39	Fructose	0.0067
40	Geraniol	0.0059

41	Geranyl acetate	0.0030
42	Habanolide	1.3176
43	HCA	0.0500
44	Heliotropine	0.0379
45	Helvetolide	5.0688
46	Heptanolactone-gamma	0.0532
47	Hexeny-1-cis Acetate	0.0029
48	Hexyl acetate	0.0093
49	Hexy-n salicylate	0.0154
50	Ionone-beta	0.0202
51	Iso E Super	0.1807
52	Leaf alcohol	0.0098
53	Liffarome	0.0024
54	Linalyl acetate	0.0490
55	Magnolan	0.0262
56	Methoxyacetophenone-p	0.0332
57	Musk T	0.3378
58	Neryl acetate	0.0038
59	Nonanolactone-gamma	0.2434
60	Ortholate	0.0865
61	Phenoxyethanol	0.0058
62	Pinene-beta	0.0260
63	Polysantol	0.0188
64	Rose oxide	0.0114
65	Sabinene	0.0034
66	Sandalore	0.0324
67	Styralyl acetate	0.0032
68	Terpinene-gamma	0.0176
69	Thujopsene	0.0044
70	Timberol	0.0846
71	Tricyclodeceny acetate	0.0134
72	Triethyl citrate	2.9435
73	Triplal	0.0082
74	Undecalactone-gamma	0.0111
75	Undecavertol	0.0085
76	Vanillin	0.3245
Total:		100.00

COPYRIGHT©2018-2023 to entities above.

NOT TO BE MARKETED IN WHOLE NOR IN PARTS



End
SESSION 1

**Second Half
of
SESSION 2**

GC
of a
PERFUME

TRIMROSE PERFUME OIL
THE BODY SHOP
POLYSANTOL 16-10-97
POISON 1002
PEAL & CO
PANTHERE
de la Renta
tif. 7/25/91
V. MANCINI
ORANGE GELEE
OPIUM EDT
NIVEA CREAM
NIGHT FLIGHT
CYL ACETA

P

17

PEAL & CO

PANTHERE

OUI-NON

OPIUM EDT

OCEAN DREAM

NWT D'ORIENT

NIVEA CREAM

NIGHT FLIGHT

NEBOLL

CYL ACETA

LOUIS EDP - GC			LOUIS EDP - FORMULA		
Both LOUIS BLACK and LOUIS WHITE, same juice			Launched 2018		
Bottle 2021 GC Dec 2023					
Perfumer(s)			Christophe Laudamiel		
Recording Studios			Firmenich		
Producer and Production			DreamAir THE ZOO NYC		
COPYRIGHT©2021-2024LAUDAMIEL					
NOT TO BE MARKETED IN WHOLE NOR IN PARTS					
No	Ingredient Name	PCT (%)	Ingredient Name	m	PCT (%)
1	ADOXAL	0,03	ADOXAL @10% IPM	0,50	0,38
2	AMBRETTOLIDE	0,46	AMBRETTOLIDE	0,50	0,38
3	AMBROX®	2,71	AMBROX SUPER®	3,00	2,28
4	ANETHOLE	0,09	ANETHOLE III @10%	0,30	0,23
5	BACDANOL®	5,48	BACDANOL	7,00	5,32
6	CASHMERAN®	0,74	CASHMERAN®	1,00	0,76
7	CITRAL	0,27	CITRAL	0,1	0,08
8	CYCLOGALBANATE	0,11	CYCLOGALBANATE	0,20	0,15
9	DIHYDROMYRCENOL	3,86	DIHYDROMYRCENOL	5,00	3,80
10	ETHYL VANILLIN	0,09	ETHYL VANILLIN	0,10	0,08
11	ETHYLENE BRASSILATE	3,97	ETHYLENE BRASSYLATE	5,00	3,80
12	EXALTOLIDE	6,41	EXALTOLIDE TOTAL	7,20	5,47
13	GALAXOLIDE PURE	2,99	GALAXOLIDE 70 IPM EXTRA	6,00	4,56
14	GALBEX	0,15	GALBEX	0,50	0,38
15	HABANOLIDE®	1,49	HABANOLIDE	2,00	1,52
16	HEDIONE®	4,09	HEDIONE	5,00	3,80



17	ISO E SUPER	12,32	ISO E SUPER	15,00	11,39
18	LIFFAROME	0,02	LIFFAROME @10% IPM	0,30	0,23
19	LINALOOL	3,69	LINALOOL	2,00	1,52
20	METHYL CEDRYL KETONE	3,01	VERTOFIX COEUR	5,00	3,80
21	MUSCENONE	1,97	MUSCENONE DELTA	2,00	1,52
22	PLICATONE	0,22	PLICATONE	0,20	0,15
23	TONALID	4,52	TONALIDE PF	6,00	4,56
24	TRIPLAL	0,18	TRIPLAL®	0,30	0,23
25	VANILLIN	0,18	VANILLIN PERF	0,30	0,23
26	VERAMOSS	0,05	VERAMOSS	0,10	0,08
27	ALDEHYDE C10	0,01	ALLYL AMYL GLYCOLATE	0,20	0,15
28	ALDEHYDE C9	0,01	AMBREINE NAT @10% IPM	0,60	0,46
29	ALLOAROMADENDRENE	0,06	BASIL OIL NAT	0,10	0,08
30	BERGAMOTENE ALPHA	0,01	BERGAMOTE ESS NAT	13,00	9,87
31	BHT	0,10	CARDAMOM GREEN SFE NAT	2,10	1,60
32	BISABOLENE BETA	0,04	CARDAMOM OIL NAT	0,60	0,46
33	BORNEOL	0,03	CEDARWOOD OIL VIRGINATA NAT	1,00	0,76
34	BULNESOL	0,23	CEDRAT Heaspace Reco	3,00	2,28
35	CAMPHENE	0,01	CINNAMON CEYLON SFE NAT	0,20	0,15
36	CAMPHOR	0,06	CINNAMON OIL CEYLON NAT	0,40	0,30
37	CARENE-3 DELTA	0,02	CLOVE OIL ENGLISH NAT	0,30	0,23
38	CARYOPHYLLENE	0,24	CUMIN OIL NAT @10% IPM	1,00	0,76
39	CARYOPHYLLENE ALCOHOL	0,03	DORINONE BETA @10% IPM	0,25	0,19
40	CARYOPHYLLENE OXIDE	0,03	FIR BALSAM ABS @10% IPM	0,30	0,23
41	CEDRENE ALPHA	0,22	FIRSTAB	1,50	1,14
42	CEDRENE BETA	0,00	GALBANUM CLAIR NAT @10% IPM	0,20	0,15

43	CEDRENE-9	0,01	GINGER SFE NAT	0,10	0,08
44	CEDROL ALPHA	0,20	GUAIACWOOD OIL NAT	0,50	0,38
45	CINEOLE	0,08	IRALIA PURE	8,00	6,08
46	CINNAMAL	0,08	IRONE BETA	0,10	0,08
47	CITRONELLAL	0,00	ISOEUGENOL EXTRA NAT US @10% IPM	0,30	0,23
48	CITRONELLOL BETA	0,03	LAVANDIN GROSSO ARR NAT	1,00	0,76
49	CITRONELLYL ACETATE	0,02	METHYL HEPTINE CARBONATE @10% IPM	0,20	0,15
50	COPAENE ALPHA	0,02	NONYLENIC ALDEHYDE 1 CITR @10% IPM	0,40	0,30
51	CUMINAL	0,02	ORANGE FLOWER ABS NAT @10% IPM	2,00	1,52
52	CUPARENE	0,02	ORRIS CONCRETE ARR NAT	2,40	1,82
53	CYCLOSEYCHELLENE	0,02	OXANE @1% IPM	0,10	0,08
54	CYMEN-8-OL PARA	0,00	PALISANDROL	1,00	0,76
55	CYMENE-P	0,79	PAMPLOCOEUR	6,00	4,56
56	DPG	0,95	PATCHOULI COEUR SFE NAT	1,00	0,76
57	ELEMENE BETA	0,04	PATCHOULI OIL DM NAT	2,30	1,75
58	ELEMENE DELTA	0,00	PINE ABS NAT	0,20	0,15
59	ESTRAGOLE	0,04	SAGE CLARY ABS NAT	2,00	1,52
60	ETHYL BENZENEPROPANOATE	0,00	SAGE CLARY OIL NAT	2,40	1,82
61	ETHYL DODECANOATE	0,03	SANDALWOOD BASE	1,00	0,76
62	ETHYL TETRADECANOATE	0,18	VANILLA BOURBON SFE ABS NAT	0,20	0,15
63	EUDESMOL GAMMA	0,01	VERDOX	0,20	0,15
64	EUDESMOL-EPI GAMMA	0,01	WARDIA	0,50	0,38
65	EUGENOL	0,19	WORMWOOD OIL NAT	0,40	0,30
66	EUGENOL ACETATE	0,02			
67	FARNESENE BETA	0,02			
68	FENCHENE ALPHA	0,00			
69	GERANIOL	0,07			

70	GERANYL ACETATE	0,16		
71	GERMACRENE D	0,03		
72	GUAIENE ALPHA	0,39		
73	GUAIOL	0,12		
74	HERCOLYN D	0,40		
75	HEXENOL cis-3	0,00		
76	HYDROXYCITRONELLAL	0,01		
77	IRONE ALPHA	0,16		
78	IRONE GAMMA	0,09		
79	ISOCINEOLE	0,00		
80	ISOMETHYL IONONE ALPHA	3,42		
81	ISOPROPYL LAURATE	0,01		
82	ISOPROPYL MYRISTATE	7,75		
83	LAVANDULOL	0,01		
84	LAVANDULYL ACETATE	0,02		
85	LIMONENE	4,87		
86	LIMONENE EPOXIDE	0,01		
87	LINALOOL OXIDE	0,03		
88	LINALYL ACETATE	5,84		
89	METHYL 2-OCTYNOATE	0,01		
90	METHYL BENZENEACETATE	0,01		
91	METHYL CYCLOGERANIATE	0,16		
92	METHYL-N IONONE ALPHA	2,54		
93	METHYL-N IONONE BETA	0,19		
94	MUSK C-14	0,00		
95	MYRCENE BETA	0,13		

96	MYROXIDE®	0,01		
97	NEROL	0,03		
98	NERYL ACETATE	0,11		
99	NORLIMBANOL®	0,15		
100	OCIMENE BETA	0,05		
101	OCTANONE-3	0,00		
102	OCTEN-1-OL-3	0,00		
103	OCTYL ACETATE	0,02		
104	ORTHOLATE	0,17		
105	PATCHOULENE ALPHA	0,14		
106	PATCHOULENE BETA	0,09		
107	PATCHOULENE GAMMA	0,03		
108	PATCHOULOL	1,01		
109	PELLANDRENE ALPHA	0,01		
110	PELLANDRENE BETA	0,03		
111	PHENYLETHYL ALCOHOL	0,15		
112	PINENE ALPHA	0,16		
113	PINENE BETA	0,91		
114	PINOCARVOL	0,00		
115	POGOSTOL	0,08		
116	POGOSTONE	0,04		
117	POLYSANTOL®	0,38		
118	PROPYL ACETATE	0,01		
119	SABINENE	0,20		
120	SABINYL ACETATE	0,06		
121	SCLAREOL	1,05		

122	SEYCHELLENE	0,17			
123	TERPINENE ALPHA	0,01			
124	TERPINENE GAMMA	0,80			
125	TERPINEOL ALPHA	0,09			
126	TERPINEOL GAMMA	0,01			
127	TERPINEOL-4	0,05			
128	TERPINOLENE	0,04			
129	TERPINYL ACETATE ALPHA	0,75			
130	TERPINYL ACETATE DELTA	0,00			
131	THUJANOL-4	0,01			
132	THUJANOL-4 ETHYL ETHER	0,00			
133	THUJENE ALPHA	0,02			
134	THUJONE	0,12			
135	THUJOPSENE	0,14			
136	TRIETHYL CITRATE	3,40			
137	VETICOL ACETATE	0,08			
138	ZINGIBERENE	0,04			
	TOTAL	100,00		131,65	100,00
	COPYRIGHT©2021-2024LAUDAMIEL				
	NOT TO BE MARKETED IN WHOLE NOR IN PARTS				

Naturals suggested by GC analyst:

- **Bergamot oil 8.0%-11.0%**
- **Cedarwood oil 0.8%-1.6%**
- **Clary sage oil 11.0%-14.0%**
- **Ginger oil 0.05%-0.1%**
- **Guaiac wood oil 0.5%-1.0%**
- **Lavander oil 0.3%-0.6%**
- **Patchouli oil 3.0%-4.0%**

FIERCE ABERCROMBIE & FITCH 2002 different bottles around 2018-2020

Perfumers: Christophe Laudamiel, Carlos Benaïm, Bruno Jovanovic

Recording Studio: IFF

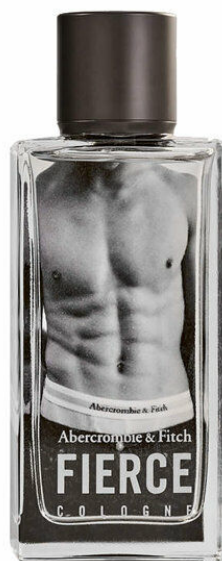
Order and Packager: Boom, Inter-Parfums since 2014

LEGEND MONT-BLANC 2011

Perfumer: Olivier Pécheux, 3 perfumers above should also be credited

Recording studio: Givaudan

Order and Packager: Inter-Parfums



No.	FIERCE GC1 %	FIERCE GC2 %	Fierce Comments	LEGEND GC %	NAME(EN)
1		0.0040			1-Octen-3-ol, acetate
2				0.1640	Allyl Amyl Glycolate
3				0.0316	Amberketal
4	1.0808	1.0503		1.6467	Ambrettolide
5	0.2220	0.2023		1.5465	Ambrox
6	0.2836	0.2363	Sunscreen	0.6499	Avobenzone
7	1.0544	1.0194	1.0000	0.8855	Bacdanol
8	0.0094				Bergamotene Alpha
9	5.1181	4.8170	<--GC too high!!	0.4114	BHT
10	0.0251	0.0236		0.0210	Borneol
11		0.0023			Bourbonene Alpha
12	0.0055	0.0074			Camphene
13	0.0807	0.0616		0.0495	Camphor
14	0.0308	0.0283		0.0111	Caryophyllene



15				0.3806	Caryophyllene acetate
16	2.0900	1.9770	2.0000	1.5852	Cashmeran
17	0.1005	0.0881		0.0425	Cineole
18	0.1956	0.1603		0.0966	Citral
19	2.3862	2.0069		1.5694	Citronellol
20	0.0109	0.0103			Copaene Alpha
21	0.5921	0.5206		0.3676	Coumarin
22				0.0244	Cuparene
23	0.0027			0.0117	Cymene Para
24	0.7281	0.3982	in original?		Damascol
25	0.1206	0.1035		0.1548	Damascone Alpha
26			solvent	4.0494	Diethyl Phtalate
27		0.0041			Dihydrolinalool
28	9.6518	8.9134		5.9661	Dihydromyrcenol
29				0.1892	Dimethylbenzylcarbinylyl butyrate
30	4.1507	3.2517	solvent	1.4016	Dipropylene Glycol
31	0.0868	0.0656		0.0578	Dynascone
32				0.3813	Ebanol
33	0.0055				Eth 2 4 DiHydroxy3 6 DiMe Benzoate
34	0.3920	0.3484	original? or impur.	0.5337	Eth 2 Hexyl Salicylate
35		0.0361			Ethyl Atrarate

36	0.0017				Ethyl Salicylate
37	0.0162	0.0092	typical impurities	0.0229	Geraniol
38	0.0299	0.0298	in	0.0491	Geranyl Acetate
39	0.0074	0.0086	citronellol		Geranyl Ethyl Ether
40	0.0257	0.0309			Germacrene D
41	18.4502	19.9307		11.7585	Hedione
40				4.2127	Hedione HC or Paradisone
41				0.5469	Hexenyl Salicylate, cis 3
42		0.0019			Hexyl Acetate
43	0.0047				Hexyl Butanoate
44	1.1384	1.0796			Hexyl Salicylate
45	45.0066	47.1073		35.8832	Iso E Super
46			Solvent	0.4283	Isopropyl Myristate
47				0.0053	Lavandulol
48	0.0259	0.0206		0.0180	Lavandulyl Acetate
49				0.0020	cis-3 Hexenol
50	0.2564	0.2203	0.2000	0.2547	Limonene
51	0.7189	0.5911		0.9672	Linalool
52		0.0055	oxydation		Linalool Oxide
53	1.5526	1.2726	in original?	1.5029	Linalyl Acetate
54			woody ala Iso E	10.2470	Methyl Cedryl Ketone
55	0.0276	0.0259		0.0164	Myrcene Beta

56	0.0090	0.0141	citronellol	0.0132	Nerol
57	0.0219	0.0223	impurities	0.0398	Neryl Acetate
58	0.0154	0.0115		0.0063	Ocimene Beta
59		0.0022			Ocimene Neo Allo
60				6.2672	Ortholate
61	1.8264	1.9457		3.1136	Parsol MCX
62	0.0023				Phellandrene Beta
63				0.1609	Phenoxyethyl Isobutyrate
64	0.0082	0.0103		0.0149	Pinene Alpha
65	0.0055	0.0047		0.0725	Pinene Beta
66	0.0107	0.0085	0.0100	0.0105	Pinoacetaldehyde
67	1.1871	1.2932	2.0000	0.6478	Polysantol
68				0.0741	Pomarose
69			solvent	0.2852	Propylene Glycol
70	0.0050	0.0019		0.0043	Sabinene
71	0.0131				Sandalore
72	0.1741	0.1167	0.2?	0.1156	Scentenal
73		0.0078			Sclareol
74	0.2920	0.2267		0.2188	Styralyl acetate
75	0.0042			0.0337	Terpinene Gamma
76	0.0259	0.0242		0.0339	Terpineol 4
77	0.0313	0.0245		0.0236	Terpineol Alpha



ALLURE SENSUELLE EdP Chanel			JOY INTENSE EdP Dior		
Launched 2005			Launched 2019		
Bottle		8601 prior Dec 2023	Bottle		9H03 prior Dec 2023
Perfumer(s)		J. Polge	Perfumer(s)		F. Demachy
Recording Studios		CHANEL	Recording Studios		DIOR
Packager		CHANEL	Packager		LVMH
COPYRIGHT©2005-2024 to entities above			COPYRIGHT©2019-2024 to entities above		
NOT TO BE MARKETED IN WHOLE NOR IN PARTS			NOT TO BE MARKETED IN WHOLE NOR IN PARTS		
CHROMATOGRAMME			CHROMATOGRAMME		
No	NAME	PCT(%)	No	NAME	PCT(%)
1	AMBRETTOLIDE	0,51	1	AMBRETTOLIDE	1,18
2	AMBROX	0,28	2	AMBROX	0,51
3	AVOBENZONE	0,96	3	AVOBENZONE	0,49
4	BACDANOL	1,29	4	BACDANOL	0,57
5	BENZYL ACETATE	2,22	5	BENZYL ACETATE	2,28
6	BENZYL ALCOHOL	0,01	6	BENZYL ALCOHOL	0,03
7	BENZYL SALICYLATE	1,42	7	BENZYL SALICYLATE	2,75
8	CALONE	0,15	8	CALONE	0,02
9	CAMPHENE	0,01	9	CAMPHENE	0,00
10	CARENE-DELTA	0,10	10	CARENE-DELTA	0,04
11	CARYOPHYLLENE	0,17	11	CARYOPHYLLENE	0,11
12	CARYOPHYLLENE OXIDE	0,06	12	CARYOPHYLLENE OXIDE	0,05
13	CITRAL	0,06	13	CITRAL	0,05
14	CITRONELLOL BETA	0,03	14	CITRONELLOL BETA	1,49



15	CITRONELLYL ACETATE	0,00	15	CITRONELLYL ACETATE	0,00
16	COUMARIN	0,03	16	COUMARIN	0,20
17	CYMENE-P	0,20	17	CYMENE-P	0,25
18	DECANAL DIETHYL ACETAL	0,01	18	DECANAL DIETHYL ACETAL	0,01
19	DIHYDROMYRCENOL	1,04	19	DIHYDROMYRCENOL	1,08
20	DIMETHYLBENZYL CARBINOL ACETATE	2,52	20	DIMETHYLBENZYL CARBINOL ACETATE	0,49
21	ELEMENE BETA	0,02	21	ELEMENE BETA	0,01
22	ELEMENE DELTA	0,01	22	ELEMENE DELTA	0,01
23	ELEMOL	0,11	23	ELEMOL	0,02
24	ETHYL ACETATE	0,01	24	ETHYL ACETATE	0,01
25	ETHYL VANILLIN	0,73	25	ETHYL VANILLIN	1,45
26	ETHYLLINALOOL	4,08	26	ETHYLLINALOOL	4,73
27	EUDESMOL GAMMA	0,03	27	EUDESMOL GAMMA	0,00
28	FLORALOZONE	0,09	28	FLORALOZONE	0,14
29	FLOROL	5,99	29	FLOROL	3,20
30	GALBEX	0,05	30	GALBEX	0,05
31	GERANIOL	0,77	31	GERANIOL	0,04
32	GERANYL ACETATE	0,25	32	GERANYL ACETATE	0,10
33	GUAIENE ALPHA	0,02	33	GUAIENE ALPHA	0,12
34	GUAIENE DELTA	0,62	34	GUAIENE DELTA	0,03
35	HCA	3,02	35	HCA	2,24
36	HEDIONE	12,30	36	HEDIONE	8,39
37	HELIONAL	1,85	37	HELIONAL	2,09
38	HELIONAL DIETHYL ACETAL	0,73	38	HELIONAL DIETHYL ACETAL	1,86

39	HEXENYL-CIS-3 SALICYLATE	3,55	39	HEXENYL-CIS-3 SALICYLATE	2,40
40	INDOLE	0,02	40	INDOLE	0,01
41	ISOMETHYL IONONE ALPHA	0,57	41	ISOMETHYL IONONE ALPHA	1,49
42	ISOVALENCENOL	0,35	42	ISOVALENCENOL	0,12
43	JASMONE CIS	0,14	43	JASMONE CIS	0,12
44	LIFAROME	0,03	44	LIFAROME	0,04
45	LIMONENE	5,00	45	LIMONENE	5,15
46	LINALOOL	6,80	46	LINALOOL	6,41
47	LINALOOL ETHYL ETHER	0,02	47	LINALOOL ETHYL ETHER	0,03
48	LINALOOL OXIDE	0,01	48	LINALOOL OXIDE	0,01
49	LINALYL ACETATE	6,25	49	LINALYL ACETATE	4,10
50	METHYL BENZOATE	0,02	50	METHYL BENZOATE	0,02
51	METHYL-N IONONE ALPHA	0,29	51	METHYL-N IONONE ALPHA	0,07
52	MUSCENONE	1,45	52	MUSCENONE	1,63
53	MUSK T	0,17	53	MUSK T	8,16
54	MYRCENE BETA	0,18	54	MYRCENE BETA	0,16
55	NEROL	0,07	55	NEROL	0,02
56	NERYL ACETATE	0,08	56	NERYL ACETATE	0,06
57	NORPATCHOULENOL	0,17	57	NORPATCHOULENOL	0,10
58	OCIMENE BETA	0,03	58	OCIMENE BETA	0,02
59	PARADISONE	5,91	59	PARADISONE	6,14
60	PATCHOULENE GAMMA	0,01	60	PATCHOULENE GAMMA	0,01
61	PATCHOULOL	5,88	61	PATCHOULOL	3,16
62	PELLANDRENE ALPHA	0,12	62	PELLANDRENE ALPHA	0,01

63	PHELLANDRENE BETA	0,06	63	PHELLANDRENE BETA	0,03
64	PHENYLETHYL ACETATE	0,01	64	PHENYLETHYL ACETATE	0,00
65	PHENYLETHYL ALCOHOL	0,61	65	PHENYLETHYL ALCOHOL	0,89
66	PINENE ALPHA	0,30	66	PINENE ALPHA	0,20
67	PINENE BETA	0,65	67	PINENE BETA	0,64
68	POGOSTOL	0,41	68	POGOSTOL	0,16
69	POLYSANTOL	0,18	69	POLYSANTOL	0,22
70	PRENYL ACETATE	0,01	70	PRENYL ACETATE	0,01
71	SABINENE	0,09	71	SABINENE	0,06
72	SANDALEMBER	0,21	72	SANDALEMBER	0,27
73	SANDALORE	0,03	73	SANDALORE	0,03
74	SANTALENE ALPHA	0,01	74	SANTALENE ALPHA	0,01
75	SANTALENE BETA	0,00	75	SANTALENE BETA	0,00
76	SANTALENE EPI BETA	0,00	76	SANTALENE EPI BETA	0,01
77	SANTALOL ALPHA	0,07	77	SANTALOL ALPHA	0,26
78	SANTALOL BETA	0,03	78	SANTALOL BETA	0,18
79	SEYCHELLENE	0,02	79	SEYCHELLENE	0,07
80	TERPINENE ALPHA	0,02	80	TERPINENE ALPHA	0,02
81	TERPINENE GAMMA	0,88	81	TERPINENE GAMMA	0,89
82	TERPINEOL ALPHA	0,03	82	TERPINEOL ALPHA	0,02
83	TERPINEOL-4	0,01	83	TERPINEOL-4	0,01
84	TERPINOLENE	0,04	84	TERPINOLENE	0,04
85	TERPINYL ACETATE ALPHA	0,02	85	TERPINYL ACETATE ALPHA	0,00
86	TERPINYL ETHYL ETHER ALPHA	0,02	86	TERPINYL ETHYL ETHER ALPHA	0,02

87	THUJANOL-4	0,02	87	THUJANOL-4	0,03
88	THUJANOL-4 ETHYL ETHER	0,02	88	THUJANOL-4 ETHYL ETHER	0,03
89	THUJENE ALPHA	0,05	89	THUJENE ALPHA	0,04
90	TRIETHYL CITRATE	0,99	90	TRIETHYL CITRATE	0,23
91	TRIMOFIX O	0,76	91	TRIMOFIX O	2,39
92	UNDECALACTONE GAMMA	0,40	92	UNDECALACTONE GAMMA	0,33
93	VANILLIN	0,64	93	VANILLIN	1,31
94	VETIVOL ALPHA	0,07	94	VETIVOL ALPHA	0,07
	TOTAL INTERMEDIATE	85,52		TOTAL INTERMEDIATE	83,99
95	ANETHOLE	0,00	95	ACIPHYLLENE	0,03
96	BENZYL BENZOATE	0,10	96	AMORPHENE ALPHA	0,03
97	BERGAMOTENE ALPHA	0,02	97	BHT	0,22
98	CADINENE DELTA	0,06	98	CANTHOXAL	0,06
99	CARVONE	0,00	99	CASHMERAN	1,07
100	CIVETONE	0,03	100	CEDROL ALPHA	0,02
101	COPAENE ALPHA	0,01	101	CEDRYL METHYL ETHER	6,53
102	CUBEBENE ALPHA	0,00	102	CUPARENE	0,01
103	DECANAL	0,00	103	CYCLAMAL	0,03
104	DIHYDROLINALOOL	0,07	104	CYCLOHEXADECANOLIDE	0,04
105	DIHYDROLINALOOL ACETATE	0,02	105	CYCLOSEYCHELLENE	0,00
106	EPICUBENOL	0,04	106	DAMASCONE ALPHA	0,04
107	EPIZIZANONE	0,05	107	ETHYL 2,4-DECADIENOATE	0,20

108	ETHYL OCTADECANOATE	0,01	108	ETHYL SALICYLATE	0,00
109	EUGENOL	0,01	109	HELIOTROPINE	0,66
110	FARNESENE ALPHA	0,11	110	HELIOTROPINE DIETHYL ACETAL	0,02
111	FLORHYDRAL	0,01	111	HEXENYL-CIS-3 ACETATE	0,02
112	FLORHYDRAL DIETHYL ACETAL	0,01	112	HYDROXYCITRONELLAL	0,50
113	GERANYLLINALOOL	0,01	113	HYDROXYCITRONELLAL DIETHYL ACETAL	0,64
114	GERMACRENE D	0,13	114	JAVANOL	0,08
115	GERMACRENE D-4-OL	0,03	115	LEAF ALCOHOL	0,04
116	HELVETOLIDE	7,70	116	MAGNOLAN	1,53
117	HEXENYL-CIS-3 BENZOATE	0,02	117	METHYL ANTHRANILATE	0,04
118	HUMULENE ALPHA	0,03	118	METHYL PIPERONYL KETONE	0,05
119	INCENSOLE	0,02	119	MUSK C-14	0,03
120	ISO E SUPER	2,56	120	NEROLIDOL	0,01
121	ISOVALENCENYL ACETATE	0,05	121	NYMPHEAL	0,04
122	KHUSIMOL	0,30	122	NYMPHEAL DIETHYL ACETAL	0,05
123	MAJANTOL	2,00	123	OCTISALATE	0,81
124	METHYL LINOLENATE	0,01	124	PARSOL MCX	2,52
125	METHYLANISOLE-P	0,02	125	PATCHOULENE ALPHA	0,06
126	MUSKONE	0,06	126	PATCHOULENE BETA	0,06
127	NONANAL	0,00	127	PHENYLETHYL PHENYLACETATE	0,20
128	PHYTOL	0,01	128	SANDENOL 803	0,23
129	PHYTYL ACETATE	0,02	129	TERPINYL-4 ETHYL ETHER	0,01
130	POGOSTONE	0,02	130	TRIPLAL	0,02
131	SELINA-6-EN-4-OL	0,04	131	TRIPLAL DIETHYL ACETAL	0,03

DAISY EdT Marc Jacobs GC
 Launched 2007
 Bottle prior Dec 2022 LOT:2328
Perfumer(s) Alberto Morillas
Recording Studios Firmenich
Packager: Coty
 COPYRIGHT©2007-2023 to entities above.
 NOT TO BE MARKETED IN WHOLE NOR IN PARTS

CHANCE Eau Tendre EdT Chanel GC
 Launched 2010
 Bottle prior Dec 2022 LOT:5301
Perfumer(s) Jacques Polge
Recording Studios Chanel
Packager: Chanel
 COPYRIGHT©2010-2023 to entities above.
 NOT TO BE MARKETED IN WHOLE NOR IN PARTS

No.	NAME	PCT(%)
1	Acoradiene-alpha	0.0110
2	Ambrettolide	0.2171
3	Ambrox	0.5438
4	Avobenzone	1.5301
5	Bacdanol	0.7125
6	Benzyl acetate	0.0043
7	Boisambrene forte	0.8349
8	Caryophyllene	0.0243
9	Cashmeran	0.1353
10	Cedrene-alpha	0.5414
11	Cedrene-beta	0.1124
12	Cedrol-alpha	0.5766
13	Citronellol-beta	1.1068
14	Cuparene	0.0326
15	Damascone-alpha	0.0293
16	Dimethylbenzylcarbinol acetate	0.0381
17	DPG	7.6612
18	Ethyl 2-methylvalerate	0.0021
19	Ethylinalool	1.6468
20	Floralozone	0.0163

No.	NAME	PCT(%)
1	Acoradiene-alpha	0.0164
2	Ambrettolide	0.3398
3	Ambrox	0.7075
4	Avobenzone	0.1445
5	Bacdanol	0.8444
6	Benzyl acetate	0.0646
7	Boisambrene forte	1.2910
8	Caryophyllene	0.0194
9	Cashmeran	0.1993
10	Cedrene-alpha	0.9871
11	Cedrene-beta	0.1476
12	Cedrol-alpha	0.7141
13	Citronellol-beta	1.4386
14	Cuparene	0.0380
15	Damascone-alpha	0.0428
16	Dimethylbenzylcarbinol acetate	0.0628
17	DPG	0.0375
18	Ethyl 2-methylvalerate	0.0166
19	Ethylinalool	2.2265
20	Floralozone	0.0165



21	Florol	0.6449	21	Florol	1.5597
22	Galaxolide	10.6919	22	Galaxolide	11.3686
23	Geraniol	0.0059	23	Geraniol	0.0407
24	Habanolide	0.8518	24	Habanolide	1.3639
25	HCA	0.2385	25	HCA	0.3438
26	Hedione	18.4175	26	Hedione	23.2134
27	Helional	1.5102	27	Helional	0.7027
28	Hexenol-3-trans isobutyrate	0.0115	28	Hexenol-3-trans isobutyrate	0.0860
29	Hexenyl-3-cis salicylate	0.2962	29	Hexenyl-3-cis Acetate	0.0280
30	Hydroxycitronellal	0.6057	30	Hydroxycitronellal	0.1408
31	Iso E Super	26.5340	31	Iso E Super	33.2089
32	Isomethyl ionone-alpha	1.9475	32	Isomethyl alpha-ionone	2.4105
33	Leaf alcohol	0.0835	33	Leaf alcohol	0.0308
34	Liffarome	0.0931	34	Liffarome	0.0915
35	Limonene	0.0846	35	Limonene	0.1716
36	Linalool	0.4038	36	Linalool	1.4741
37	Linalyl acetate	1.4806	37	Linalyl acetate	1.7152
38	Methyl pamplémousse	0.0230	38	Methyl pamplémousse	0.0136
39	Methyl-N alpha-ionone	0.0700	39	Methyl-N alpha-ionone	0.1109
40	Methyl-N beta-ionone	0.0295	40	Methyl-N beta-ionone	0.0173
41	Muscenone	2.8858	41	Muscenone	3.2184
42	Myrcene-beta	0.0107	42	Myrcene-beta	0.0303
43	Neryl acetate	0.0086	43	Neryl acetate	0.0322
44	Ortholate	0.0956	44	Ortholate	0.1383
45	Parsol MCX	3.5206	45	Parsol MCX	0.7557
46	Pinene-alpha	0.0028	46	Pinene-alpha	0.0021
47	Sandalore	0.1429	47	Sandalore	0.1227
48	Thujopsene	0.3691	48	Thujopsene	0.5503
49	Triplal	0.1115	49	Triplal	0.0536
50	Undecalactone-gamma	0.0692	50	Undecalactone-gamma	0.0603

51	Vanillin	0.0073	51	Vanillin	0.0065
1	Chamigrene-beta	0.0273	1	Acetic acid	0.0217
2	Citronellyl acetate	0.0070	2	Allocedrol	0.0103
3	Cyclamal	0.1074	3	BHT	0.0534
4	Cyclogalbaniff	0.0150	4	Carbitol	0.0034
5	Cyclopentadecanolide	2.0676	5	Damascenone-beta	0.0034
6	Cymene-p	0.0059	6	Dihydrocitronellol	0.0119
7	Folione	0.0096	7	Dihydrolinalool	0.0070
8	Galbex	0.0032	8	Dihydrolinalool acetate	0.0068
9	Isopropyl Myristate	8.7348	9	Ethyl Acetate	0.0128
10	Musk T	1.1342	10	Ethylhexanol-2	0.0035
11	Nerolidol	0.0969	11	Florhydral	0.0425
12	Octocrylene	0.6664	12	Florhydral diethyl acetal	0.0339
13	Phenylethyl Alcohol	0.0251	13	Geranyl acetate	0.0671
14	Pinene-beta	0.0219	14	Geranyl ethyl ether	0.0196
15	Terpinene-gamma	0.0100	15	Helional diethyl acetal	0.3207
16	Terpinolene	0.0095	16	Helvetolide	4.0930
17	Z11 HD	0.0341	17	Hexenyl-3-cis salicylate	0.5952
			18	Hexyl-n salicylate	0.5288
	TOTAL	100.00	19	Hydroxycitronellal diethyl acetal	0.3672
			20	Lilial diethyl acetal	0.2423
			21	Linalool ethyl ether	0.0306
			22	Linalool oxide	0.0086
			23	Methylanisole-p	0.0023
			24	Ocimene-beta	0.0271
			25	Octisalate	0.2240
			26	Pomarose	0.0149
			27	Rhodial	0.0686
COPYRIGHT©2007-2023 to entities above.					
NOT TO BE MARKETED IN WHOLE NOR IN PARTS					

End
SESSION 2

BE INSPIRED BY WHAT DESERVES IT

SHOP SMARTER

Thank you
INSTITUTE OF ART AND OLFACTION
for being a truly educative, accessible and honest platform