

Merchant & Evans, Inc.

Architectural and Structural Roofing Products



800-257-6215
www.ziprib.com

Flush-Lock Series 311
Soffit & Wall Panel System

Flush-Lock Series 311

Soffit & Wall Panel System



Applications

Concealed fastener panel.
Soffits / Vented Soffits. Walls.
Fascia. Rooftop Equipment Screens.
Panels can be installed vertical,
horizontal or diagonal.

Substrates

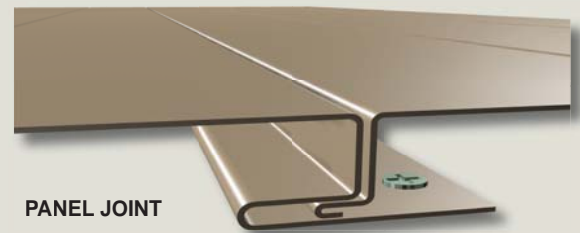
Plywood, Exterior Sheathing
or Metal Framing System.

Standard Materials

24 Gauge Galvalume
(Aluminum - Zinc Coated Steel)
1.0 Mil Kynar Coating System
with Smooth Surface. Other Materials,
Gauges & Custom Coatings available.

Performance

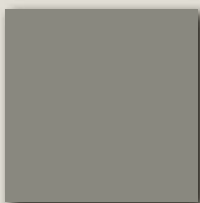
ASTM E-283 & ASTM E-331 Tested
F.B.C. Approved



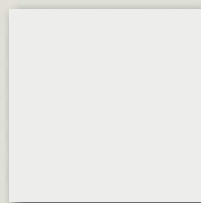
Standard Colors - Additional colors are available upon request.



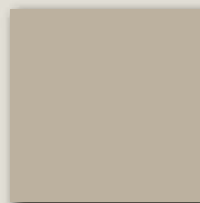
Colonial Red
434B134



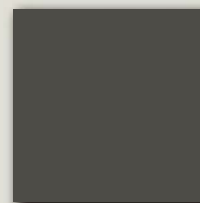
Slate Gray
432B318



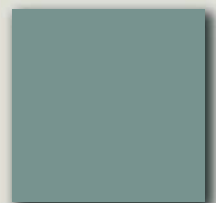
Regal White
431A844



Light Seawolf
433B493



Dark Bronze
437B680



Moss
435B631

Merchant & Evans, Inc. (East Coast) 308 Connecticut Dr. Burlington, NJ 08016 ♦ (West Coast) 419 E. Juanita Ave. Mesa, AZ 85204

phone: 800-257-6215 fax: 609-387-4838 website: www.ziprib.com

Updated June 2012