

## PRAIRIE DUNE SERIES

### MULTI-SECTION

Inspired touches make the Prairie Dune Series by Skyline Homes anything but ordinary. Skyline offers three and four bedroom models, each with two baths. Whether you opt for the base floor plan or the optional den and laundry room, you're sure to find a comfortable place to call home.

Manufactured in Arkansas City, Kansas and backed by over 70 years of manufacturing experience, a 12-month warranty and stellar customer service — take a look for yourself to see why the Prairie Dune Series is the right decision for you and your family.

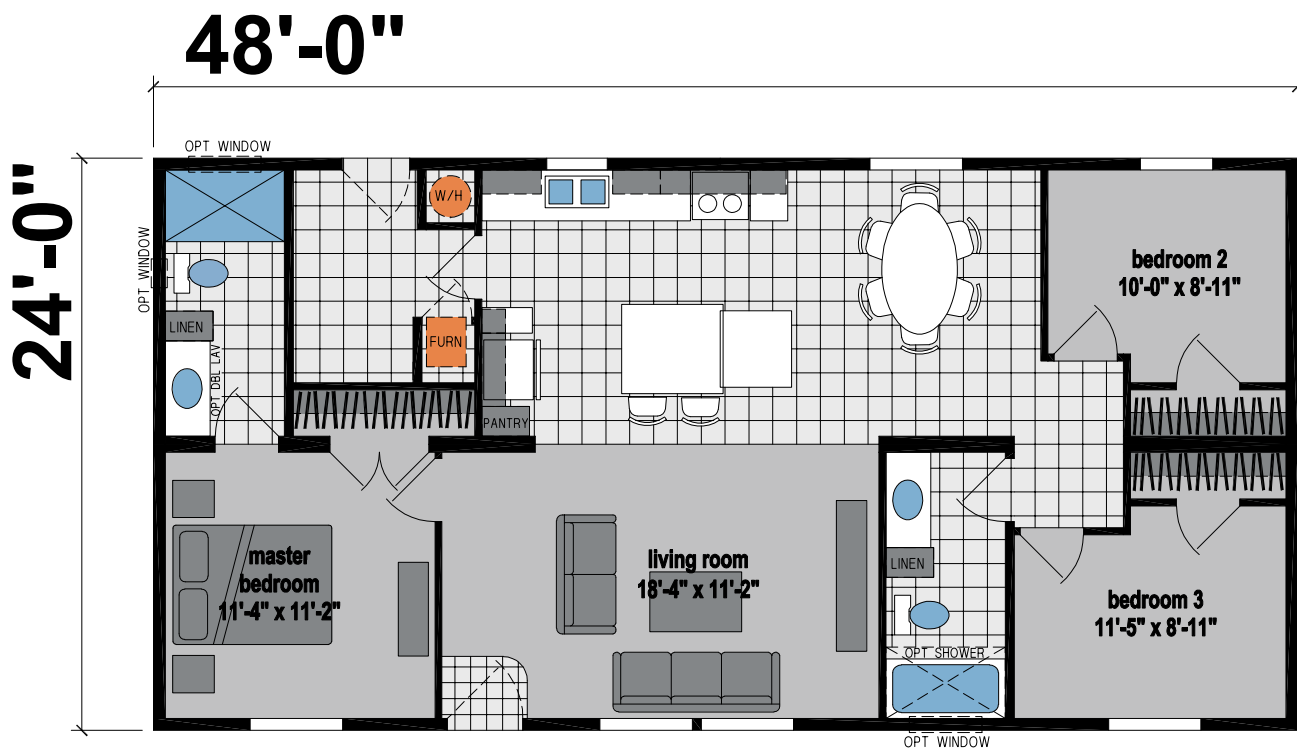
PRAIRIE DUNE 8852 (Pg. 8-9)







Shown with Optional Exterior



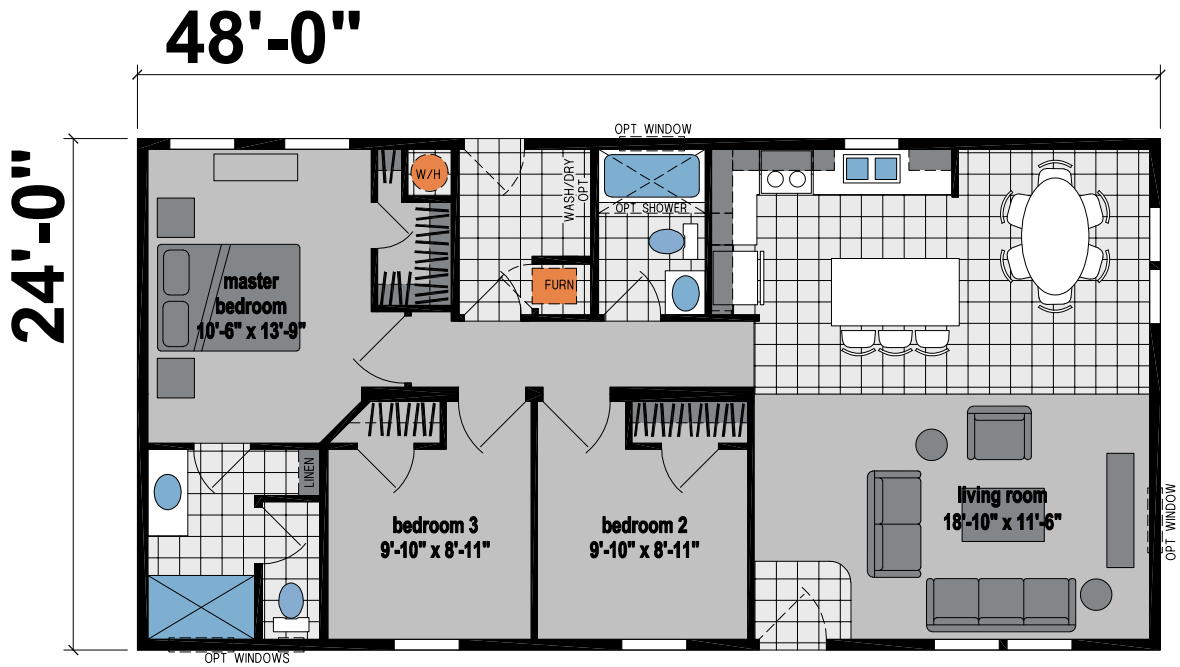


PRAIRIE DUNE  
8432

3 BED-2 BATH  
1152 SQ.FT.

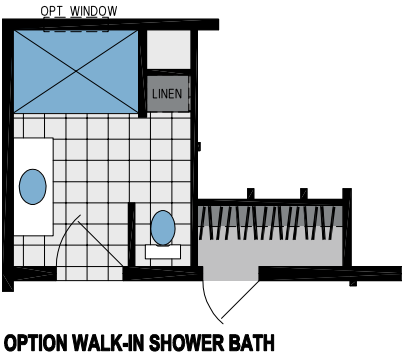
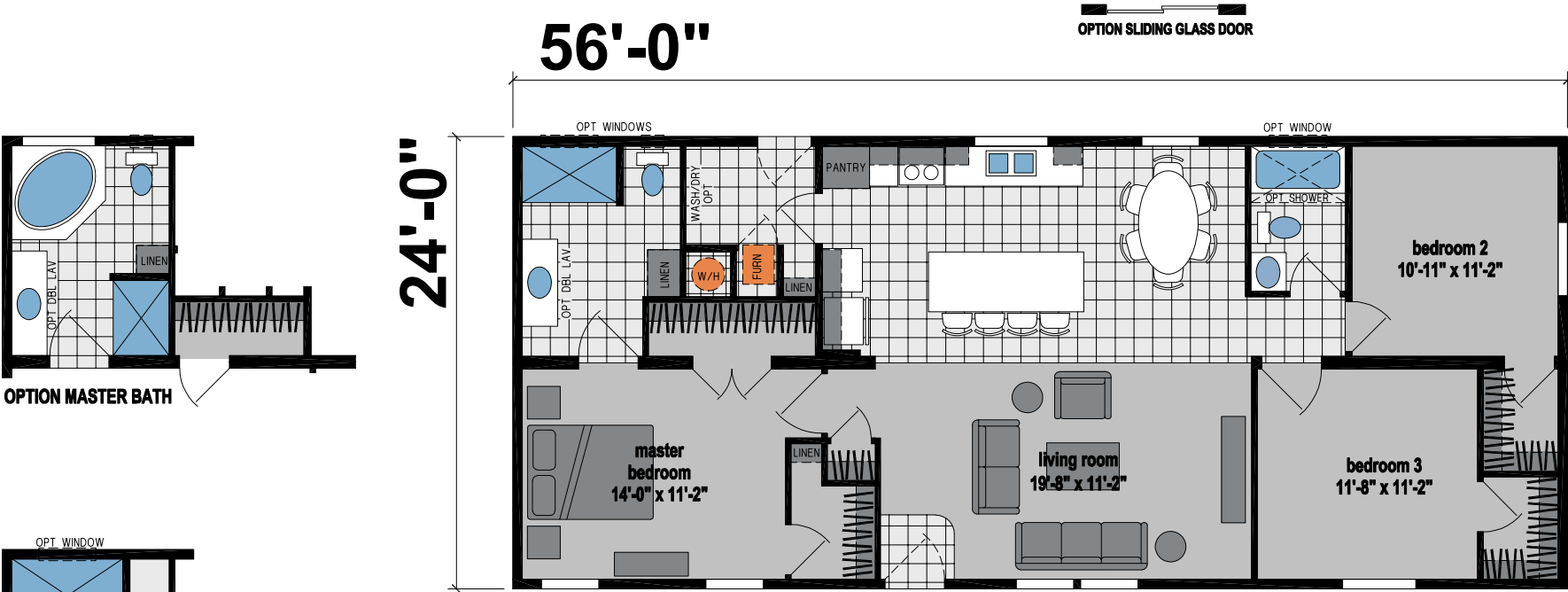


Shown with Optional Exterior

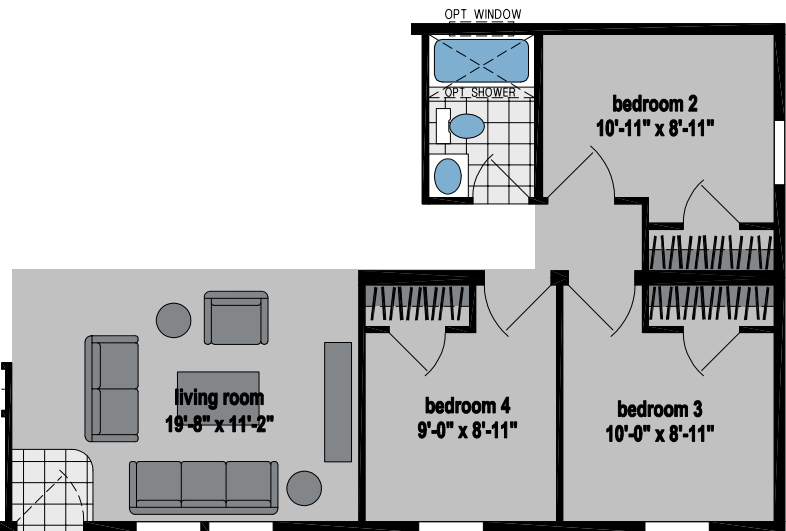


PRAIRIE DUNE  
8452

3 BED-2 BATH  
1344 SQ.FT.



OPTION WALK-IN SHOWER BATH



OPTION 4TH BEDROOM



PRAIRIE DUNE  
8852

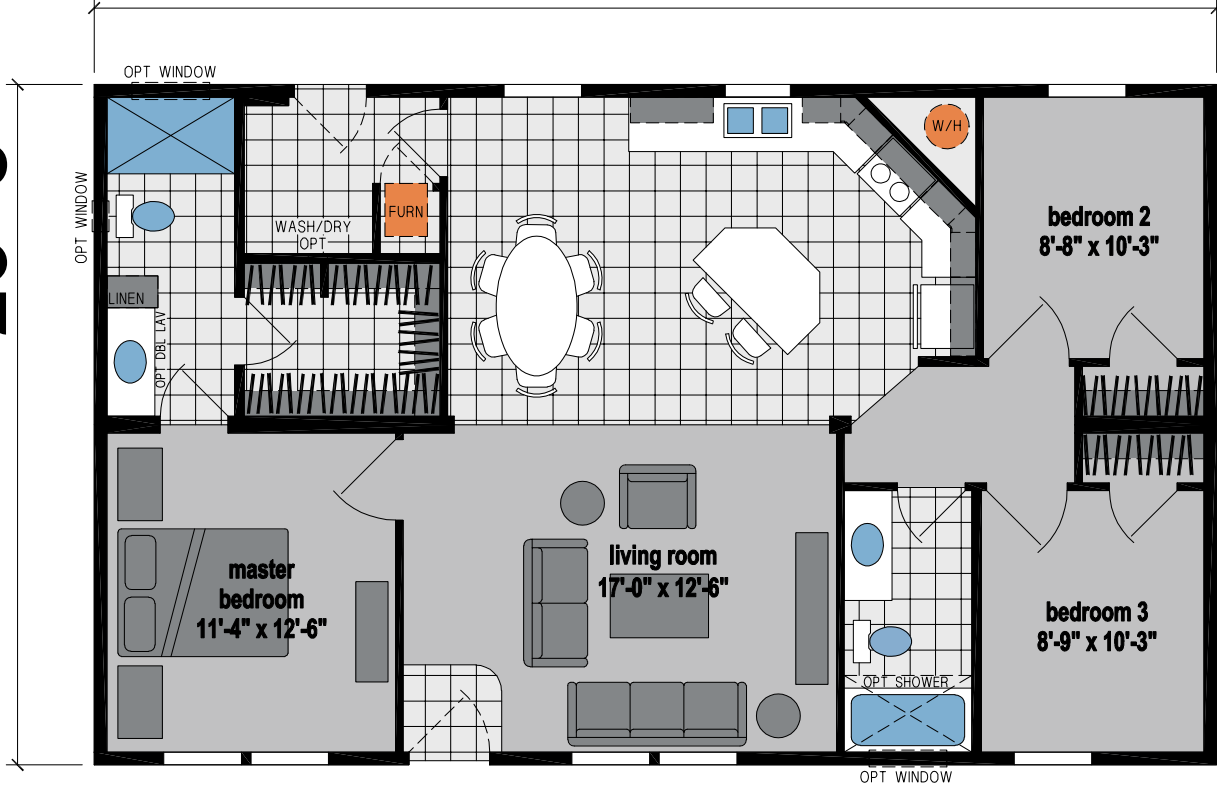
3 BED-2 BATH  
1144 SQ.FT.



Shown with Optional Exterior

44'-0"

26'-8"







Shown with Optional Exterior

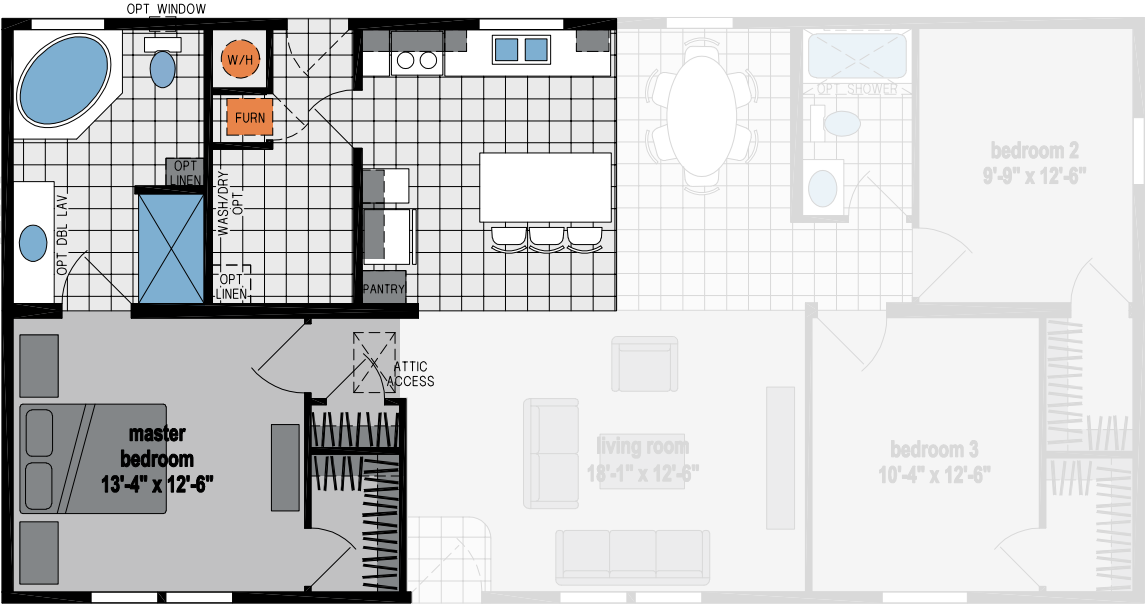




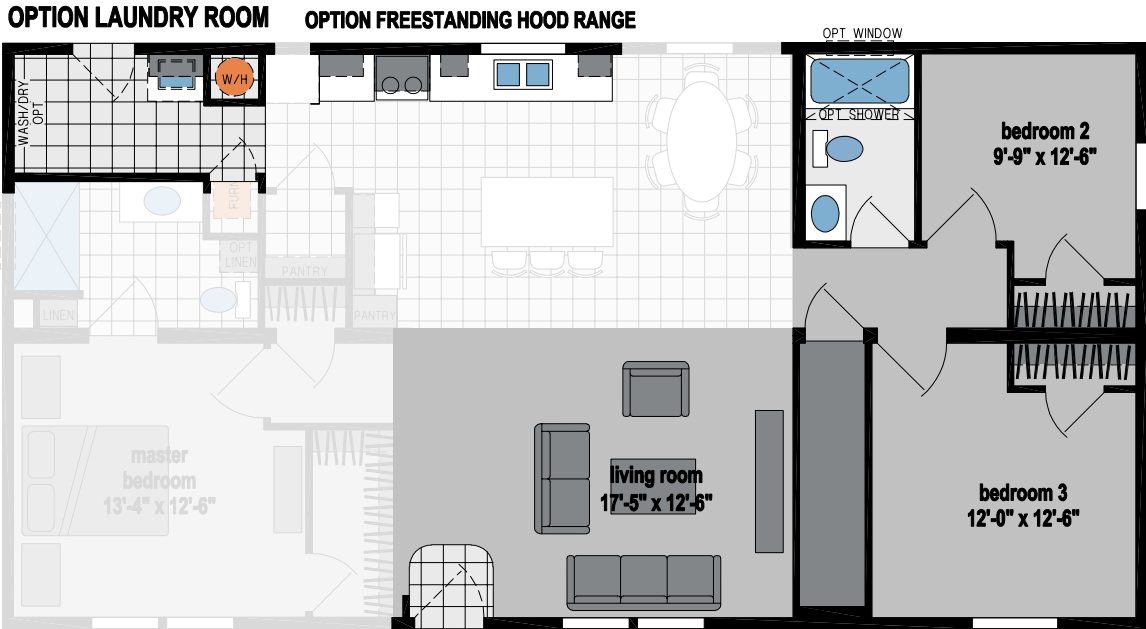
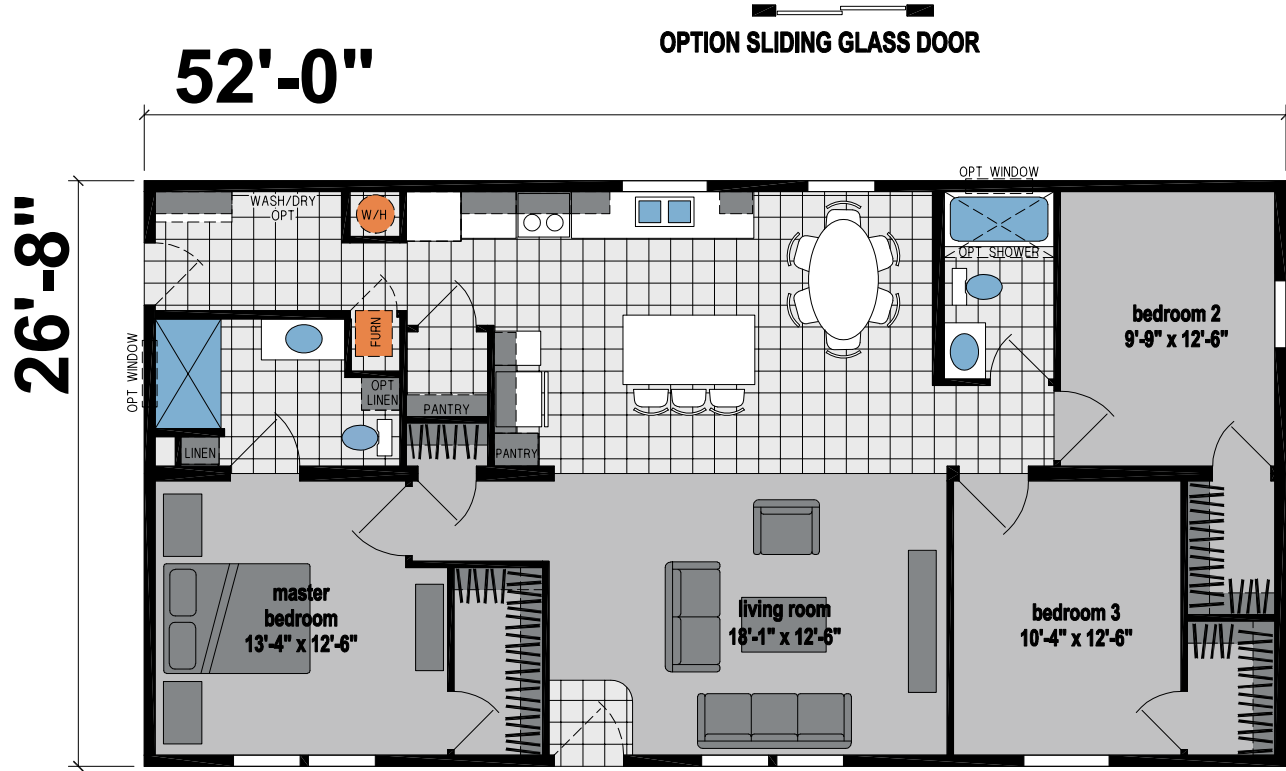
PRAIRIE DUNE  
8855  
3 BED-2 BATH  
1386 SQ.FT.



Shown with Optional Exterior



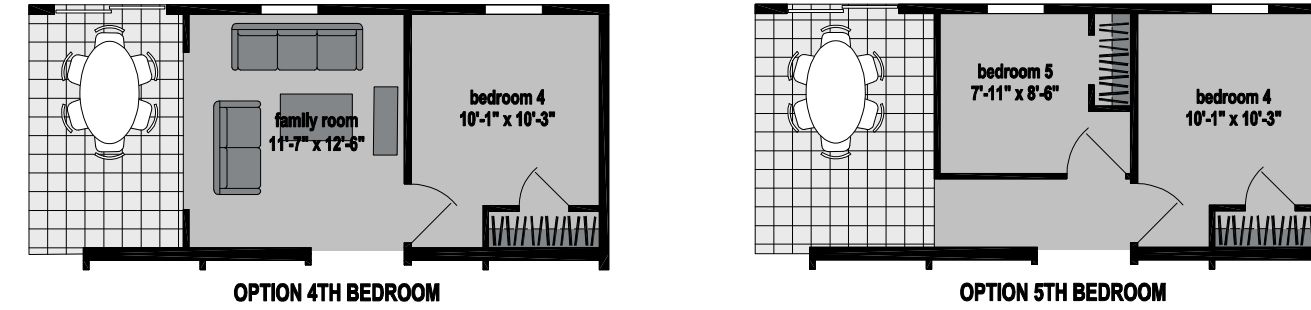
OPTION LAUNDRY ROOM &  
DELUXE BATH



OPTION STAIRWELL AT MODULAR

**PRAIRIE DUNE**  
**8831P**

**4 BED-2 BATH**  
**1493 SQ.FT.**



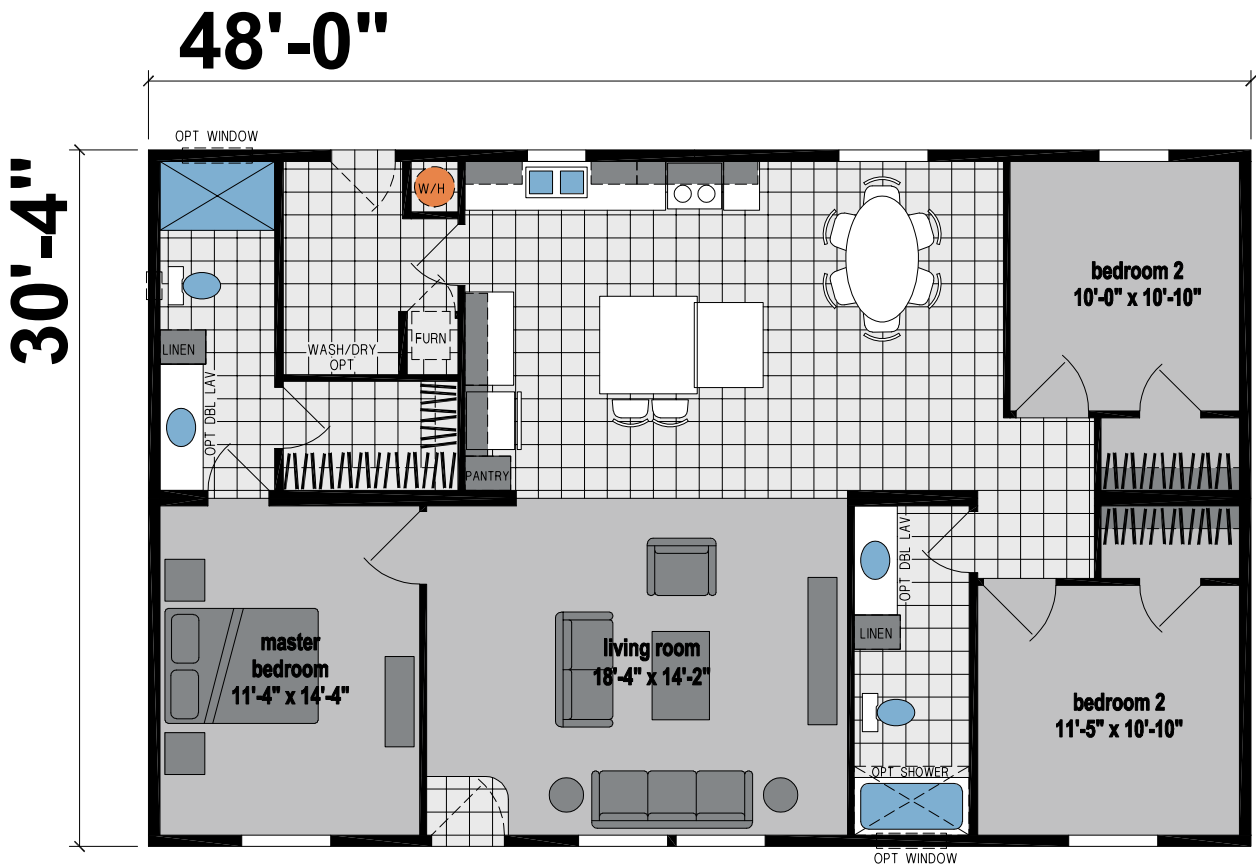
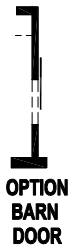
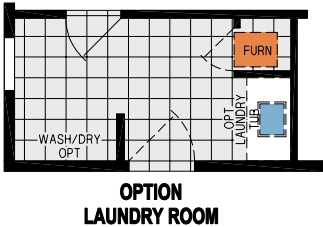
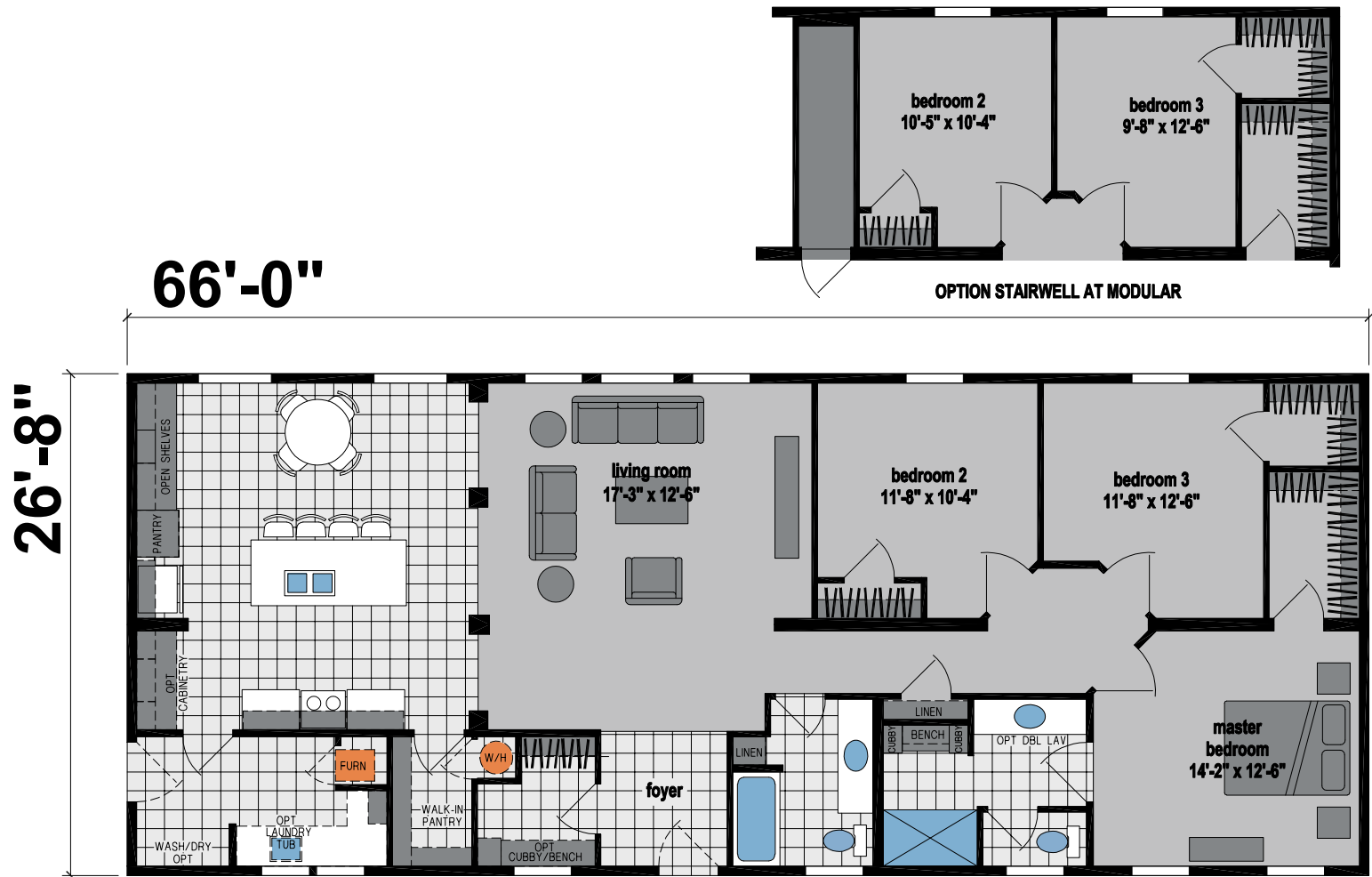
**PRAIRIE DUNE**  
8808

**3 BED-2 BATH**  
**1600 SQ.FT.**



PRAIRIE DUNE  
8841

3 BED-2 BATH  
1760 SQ.FT.



PRAIRIE DUNE  
8929

3 BED-2 BATH  
1455 SQ.FT.



**3 BED-2 BATH**  
**1820 SQ.FT.**

**3 BED-2 BATH**  
**2002 SQ.FT.**

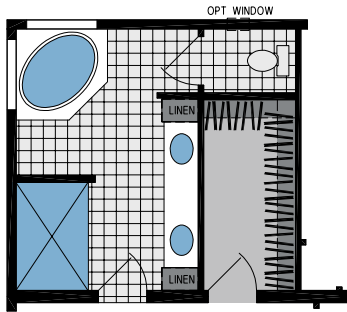


PRAIRIE DUNE  
8978

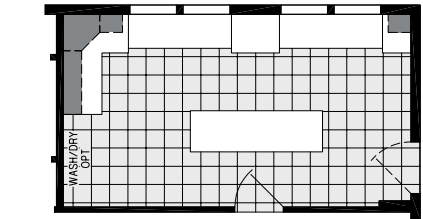
4 BED-2 BATH  
2305 SQ.FT.



Shown with Optional Exterior



OPTION OVAL TUB BATH

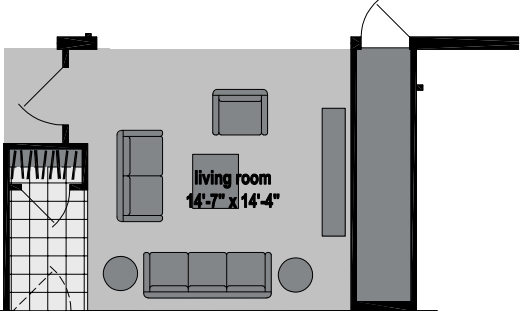
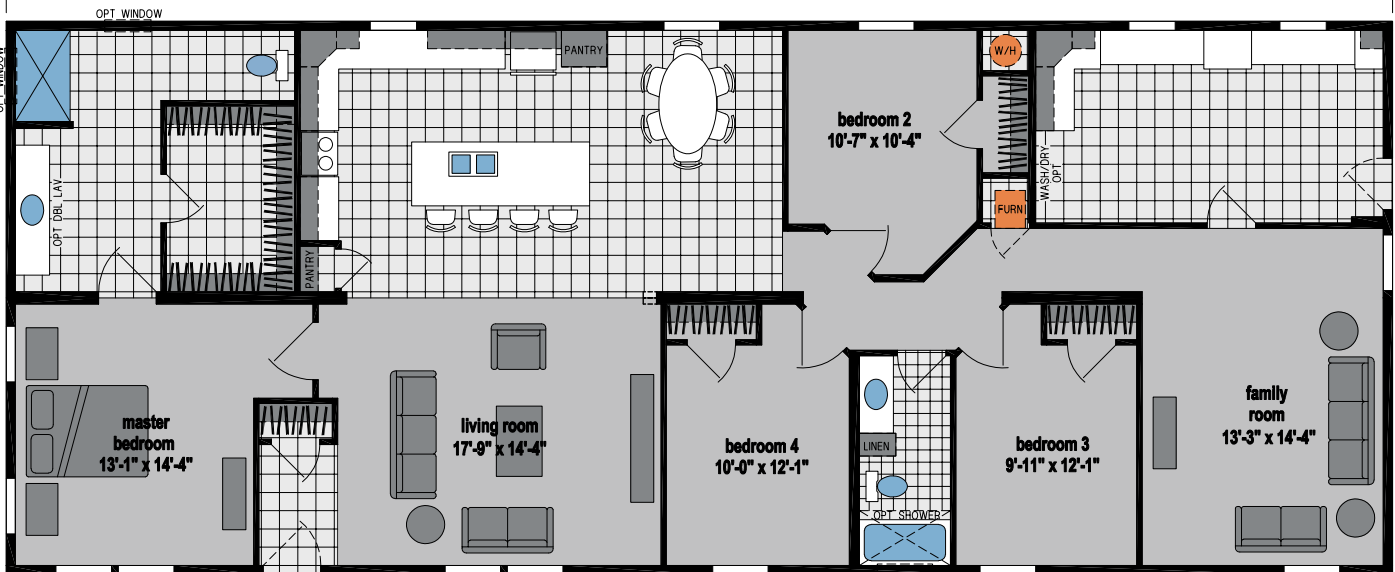


OPTION LAUNDRY ROOM

76'-0"

OPTION SLIDING GLASS DOOR

30'-4"



OPTION STAIRWELL AT MODULAR





# PRAIRIE DUNE SERIES

## MULTI-SECTION STANDARD FEATURES

### CONSTRUCTION

- 8' Sidewall Height
- Continuous Plywood Marriage Line Beam
- Flat Ceilings Throughout
- 2x4 Exterior Walls
- 2x3 Interior Walls
- 3/12 Roof Pitch
- 30# Roof Load
- 2x6 Joists on 28' Wide
- 2x8 Joists on 32' Wide
- Detachable Hitch
- Recessed Frame
- Thermal Zone II
- Insulation: R 19-11-11

### EXTERIOR

- Vinyl Siding with House Wrap
- 30-Year Architectural Shingles
- 36" 4-Light Fiberglass Front Door
- 32" 6-Panel Fiberglass Rear Door
- Single-Hung Low-E Windows
- 8' Dormer Over Door (E-284-A)

### HEATING/UTILITY

- Electric Furnace
- Inline Metal Heat Ducts
- 40-Gallon Electric Water Heater
- Plumb for Washer
- Wire for Dryer
- Wire Shelving above Washer and Dryer

### PLUMBING/ELECTRICAL

- 200 AMP Service
- LED Throughout (Except Pendants and Ceiling Fans)
- Exterior GFCI Receptacle (1)
- Whole House Water Shut-Off
- Water Shut-Offs All Fixtures
- DWV and Water Supply Plumbed into Drop(s)

### INTERIOR

- Linoleum Entry
- Mohawk® 13oz Carpet
- ½ Rebond Carpet Pad
- Tack Strip and Carpet Bar
- Tape and Texture Living Room, Kitchen, Dining Room, Hall and Family Room (per floor plan)
- 1 ½" Crown Molding (19X)
- 1 ½" Base (6M)
- 1 ½" Casing (6M)
- Lip Molding with Wrapped Luan Jambs on Exterior Doors and Windows (10H)

### KITCHEN

- CS90 Cabinet Construction
- Flat Panel Cabinet Doors
- Hardwood Cabinet Styles
- Roller Drawer Guides
- Single 3" Stacked Style Cabinet Molding
- Shelf in Base Cabinet
- Self-Edge HPL Countertop
- 4" Laminate Backsplash
- 8" Double Bowl Sink - Stainless Steel
- Single-Lever Kitchen Faucet

### APPLIANCES

- 18 Cu. Ft. Refrigerator
- 30" Black Electric Range
- Lighted Range Hood

### BATHROOM(S)

- Flat Panel Cabinet Doors
- Hardwood Cabinet Styles
- 1-Piece Fiberglass Tub/Shower
- Self-Edge HPL Countertop
- China Lavatory Bowls
- Dual Handle Lavatory Faucets
- Elongated China Commodes
- Power Vent Fan with Light

Due to continuous product development and improvement, prices, specifications, and materials are subject to change without notice or obligation. Square footage and other dimensions are approximate. Exterior images may be artist renderings and are not intended to be an accurate representation of the home. Renderings, photos and floor plans may be shown with optional features or third-party additions.

Member:







Arkansas City, KS