

H330-100 Hershey® Heath®



|             |           |           |   |
|-------------|-----------|-----------|---|
| Issue Date: | 1/11/2017 | Revision: | A |
|-------------|-----------|-----------|---|

**PRODUCT DESCRIPTION**

Varying sized pieces of chopped toffee/almond flavored candy coated with a mild milk chocolate.

| PHYSICAL ATTRIBUTES                  |  |      |   |                              |        |                        |    |    |
|--------------------------------------|--|------|---|------------------------------|--------|------------------------|----|----|
| Appearance:                          | Thin, rectangular shaped toffee bars enrobed in creamy milk chocolate. |      |   |                              |        |                        |    |    |
| Color:                               | Yellowish brown, typical Heath.  |      |   |                              |        |                        |    |    |
| Flavor:                              | Typical Heath candy bar.   |      |   |                              |        |                        |    |    |
| Pack Size:                           | 2x5lb poly bags per corrugated case.                                   |      |   |                              |        |                        |    |    |
| Case Dimensions:<br>L[depth]xWxH in. | 7  | 14.5 | 6 | Case Cube(ft <sup>3</sup> ): | 0.3524 | Pallet Conf. (TI / HI) | 15 | 10 |

**INGREDIENTS**

MILK CHOCOLATE (SUGAR, COCOA BUTTER, CHOCOLATE, NONFAT MILK, MILK FAT, LACTOSE, SALT, SOY LECITHIN, NATURAL FLAVOR), SUGAR, VEGETABLE OIL (PALM OIL, SUNFLOWER OIL), DAIRY BUTTER, ALMONDS, CONTAINS 2% OR LESS OF: SALT, SOY LECITHIN.

**ALLERGENS:** CONTAINS: ALMOND, SOY AND MILK.

| NUTRITIONAL INFORMATION |          |
|-------------------------|----------|
| NUTRIENT                | Per 100g |
| CALORIES                | 543.7    |
| CALORIES FROM FAT       | 283.95   |
| TOTAL FAT (g)           | 32.18    |
| SATURATED FAT (g)       | 17.15    |
| TRANSFAT (g)            | 0.41     |
| CHOLESTROL (mg)         | 19.28    |
| SODIUM (mg)             | 356.48   |
| TOTAL CARBOHYDRATE (g)  | 61.99    |
| DIETARY FIBER (g)       | 1.37     |
| SUGARS (g)              | 60.62    |
| PROTEIN (g)             | 3.1      |
| VITAMIN A (IU)          | 218.07   |
| VITAMIN C (mg)          | 0.28     |
| CALCIUM (mg)            | 61.51    |
| IRON (mg)               | 1.4      |



| Nutrition Facts                  |                      |
|----------------------------------|----------------------|
| Serving Size 2 tablespoons (21g) |                      |
| Servings Per Container About 216 |                      |
| Amount Per Serving               |                      |
| <b>Calories</b> 110              | Calories from Fat 60 |
| % Daily Value*                   |                      |
| <b>Total Fat</b> 7g              | <b>11%</b>           |
| Saturated Fat 3.5g               | <b>18%</b>           |
| Trans Fat 0g                     |                      |
| <b>Cholesterol</b> Less Than 5mg | <b>1%</b>            |
| <b>Sodium</b> 75mg               | <b>3%</b>            |
| <b>Total Carbohydrate</b> 13g    | <b>4%</b>            |
| Dietary Fiber 0g                 | <b>0%</b>            |
| Sugars 13g                       |                      |
| <b>Protein</b> Less Than 1g      |                      |
| Vitamin A 0%                     | Vitamin C 0%         |
| Calcium 2%                       | Iron 0%              |

\*Percent Daily Values are based on a 2,000 calorie diet.

|                          |                    |                             |             |
|--------------------------|--------------------|-----------------------------|-------------|
| <b>Brand Name:</b>       | TR Toppers         | <b>Net Weight: (Lbs.)</b>   | 10.00       |
|                          |                    | <b>Net Weight: (Kg.)</b>    | 4.54        |
| <b>Case GTIN</b>         | 0 06 51844 10007 6 | <b>Gross Weight: (Lbs.)</b> | 11.00       |
| <b>Kosher</b>            | Star-D             | <b>Gross Weight: (Kg.)</b>  | 4.99        |
| <b>Metal Detection</b>   | 1.5mm Ferrous      | 1.8mm Non-Ferrous           | 2.0mm SS316 |
| <b>Country of Origin</b> | USA                | <b>Density (lbs/gal)</b>    | 5.86        |

| MICROBIOLOGICAL ATTRIBUTES        |          |
|-----------------------------------|----------|
| Attributes                        | Limits   |
| Total Aerobic Plate Count (cfu/g) | <25,000  |
| Yeast and Mold (cfu/g)            | <100     |
| Coliforms (MPN/g)                 | <10      |
| E. coli (MPN/g)                   | Negative |
| Salmonella (/375g)                | Negative |

| GMO STATEMENT |   |
|---------------|---|
| X             | Produced with Genetic Engineering.            |
|               | Partially Produced with Genetic Engineering.  |
|               | May be produced with Genetic Engineering.     |
|               | <b>NOT</b> Produced with Genetic Engineering. |

| STORAGE CONDITIONS     |   |
|------------------------|---|
| Recommended Condition: | Best kept refrigerated ( $\leq 40^{\circ}\text{F}$ ). Seal container after opening. Refrigerate promptly after opening. |
| Alternate Condition:   | N/A   |
| Alternate Condition:   | N/A   |

| SHIPPING CONDITIONS    |   |
|------------------------|---|
| Recommended Condition: | May be shipped refrigerated ( $\leq 40^{\circ}\text{F}$ ) |
| Alternate Condition:   | May be shipped in freezer or refer truck.                 |

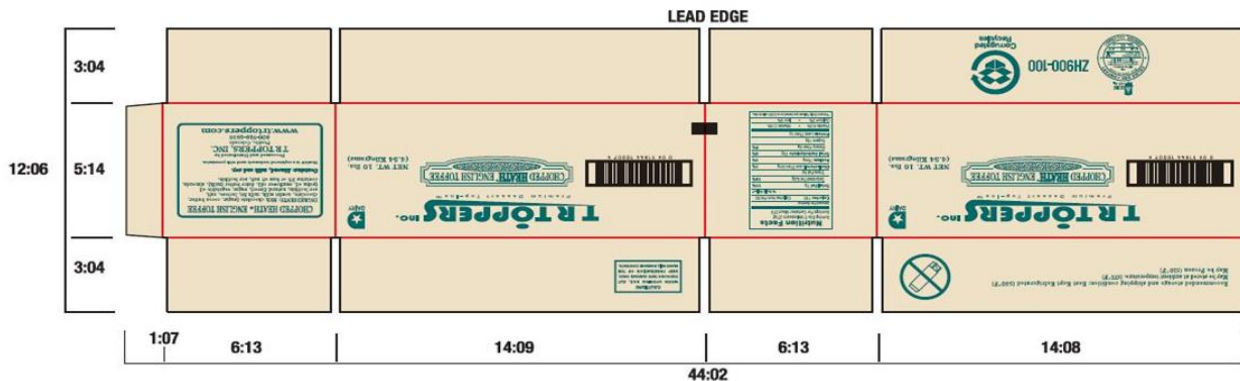
| SHELF LIFE              |  |
|-------------------------|--|
| Recommended Shelf Life: | 12 months at recommended storage conditions.   |
| Alternate Shelf Life:   | Calculate 2/3 of remaining shelf life when opened and stored at refrigeration temperature. |

| ALLERGEN / SENSATIZER TABLE    |                    |   |   |
|--------------------------------|--------------------|---|---|
| COMPONENT                      | PRESENT IN PRODUCT | PRESENT IN PRODUCTS MANUFACTURED ON THE SAME LINE | PRESENT IN THE SAME MANUFACTURING PLANT |
| PEANUTS AND DERIVATIVES        | NO                 | YES   | YES                                     |
| TREE NUTS AND DERIVATIVES      | YES                | YES   | YES                                     |
| EGG AND DERIVATIVES            | NO                 | YES   | YES                                     |
| MILK AND DERIVATIVES           | YES                | YES   | YES                                     |
| SOY AND DERIVATIVES            | YES                | YES   | YES                                     |
| WHEAT                          | NO                 | YES   | YES                                     |
| FISH (SPECIFY SPECIES)         | NO                 | NO  | NO                                      |
| CRUSTACEAN SHELLFISH (SPECIFY) | NO                 | NO  | NO                                      |
| SULFITES > 10 ppm              | NO                 | NO  | NO                                      |
| MUSTARD                        | NO                 | NO  | NO                                      |
| SESAME                         | NO                 | YES   | YES                                     |
| GLUTEN                         | NO                 |   |   |
| PARTIALLY HYDROGENATED OILS    | YES                |   |   |
| ARTIFICIAL FLAVOR SOURCE       | None               |   |   |
| FD&C ARTIFICIAL COLORS         | NO                 |   |   |

| GRANULATION |      |         |         |      |  |  |  |  |  |
|-------------|------|---------|---------|------|--|--|--|--|--|
| Sieve Size  | 1/2" | 1/4"    | #12     | Pan  |  |  |  |  |  |
| %           | <6.0 | 35 - 80 | 10 - 40 | 25.0 |  |  |  |  |  |

| CODE FORMAT  |
|--|
| Case Code - Left Side: Julian Date, Time, H330-100, PCO, BEST BY MM YYYY   |
| Case Code - Right Side: Julian Date, Time, H330-100, PCO, BEST BY MM YYYY  |
| Pallet Markings: JJY, Pallet #, Product Code   |
| <b>EXAMPLE: 25811 15:32 H330-100</b>   |
| JJJ = Production Julian Date 258 = September 15; Y = Last Digit of Year 1 = 2011; L = Line (Numeric) 1 = Line 1; Time: HH:MM 15:32 = 3:32 p.m. |
| Product Code = (e.g. H330-100)   |

**LABEL / CASE GRAPHICS**





Recommended storage and shipping condition: Best Kept Refrigerated ( $\leq 40^{\circ}\text{F}$ )  
 May be stored at ambient temperature. ( $\leq 75^{\circ}\text{F}$ )  
 May be Frozen ( $\leq 10^{\circ}\text{F}$ )



NET WT. 10 lbs.  
(4.54 Kilograms)

**CAUTION!**  
 WHEN OPENING BOX, CUT  
 THROUGH TAPE SURFACE ONLY.  
 DEEP PENETRATION OF THE  
 BLADE WILL DAMAGE CONTENTS.



| Nutrition Facts                  |                       |
|----------------------------------|-----------------------|
| Serving Size 2 tablespoons (21g) |                       |
| Servings Per Container About 216 |                       |
| Amount Per Serving               |                       |
| <b>Calories</b> 110              | Calories from Fat 60  |
|                                  | <b>% Daily Value*</b> |
| <b>Total Fat</b> 7g              | <b>11%</b>            |
| Saturated Fat 3.5g               | <b>18%</b>            |
| Trans Fat 0g                     |                       |
| <b>Cholesterol</b> Less Than 5mg | <b>1%</b>             |
| <b>Sodium</b> 75mg               | <b>3%</b>             |
| <b>Total Carbohydrate</b> 13g    | <b>4%</b>             |
| Dietary Fiber 0g                 | <b>0%</b>             |
| Sugars 13g                       |                       |
| <b>Protein</b> Less Than 1g      |                       |
| Vitamin A 0%                     | Vitamin C 0%          |
| Calcium 2%                       | Iron 0%               |

\*Percent Daily Values are based on a 2,000 calorie diet.



ZH900-100



**CHOPPED HEATH® ENGLISH TOFFEE**

**INGREDIENTS:** Milk chocolate (sugar, cocoa butter, chocolate, nonfat milk, milk fat, lactose, salt, soy lecithin, natural flavor), sugar, vegetable oil (palm oil, sunflower oil), dairy butter (milk), almonds, contains 2% or less of: salt, soy lecithin.

**Contains: Almond, milk and soy.**

Heath® is a registered trademark used with permission.

Processed and Distributed by  
**TR TOPPERS, INC.**  
 Pueblo, Colorado  
 800-748-4635  
[www.trtoppers.com](http://www.trtoppers.com)