



details that add distinctive appeal





CONTENTS:

SHUTTERS 4

LINEALS 7

MOUNTS 8

CORNER POSTS . 11

VENTS 12

HALF-ROUNDS . . 14



SHUTTERS

A bold statement to highlight your home's exterior beauty



VENTS

Turn a mechanical necessity into an attractive architectural feature



ADD THE PERRENIA TOUCH

Perrenia home exterior accents create the visual details that can transform a plain-looking façade into a memorable home with distinctive appeal. This extensive collection of shutters, lineals, corner posts, half-rounds, vents and mounts provide options that compliment any taste. And because Perrenia products maintain their beauty for many years, you'll not only enhance the appearance of your home, but its value as well.

All Perrenia products are offered in an attractive range of popular colors and are manufactured to precisely match Style Crest® vinyl siding colors eliminating the possibility of a color mismatch.

With Perrenia, it's never been easier to add those distinctive touches to your home. Long-lasting beauty, durability and nearly maintenance-free performance is what you can expect from Perrenia products.



HALF-ROUNDS

Add an attractive detail area to compliment horizontal siding



MOUNTS

A variety of handsome ways to mount lighting, electrical and plumbing



LINEALS & CORNER POSTS

The finishing touch for windows and siding



SHUTTERS

Perrenia shutters emphasize the beauty of your home's windows. These durable vinyl shutters provide an eye-catching detail for your home's exterior and have a rich finish that could be mistaken for painted wood.



FEATURES

- Deeply etched, natural woodgrain texture*
- Raised panel, classic louvered, or board & batten designs
- Decorative color pallet, plus a paintable option
- Color throughout - will not scratch, peel or fade
- Maintenance-free, high-impact polypropylene - will not crack or dent
- 12" and 15" shutter widths*
- Limited lifetime warranty
- Proudly made in the USA

* Does not apply to Board & Batten panels



BENEFITS

- Shutters are heavier than industry standards for that truly solid wood look
- Detailed wood grain finish captures real wood look, but without the maintenance
- Louvers are more rigid for improved performance
- Shutter fasteners are included for easy mounting into siding and brick
- Shutters install quickly and easily, giving your home a beautiful clean, finished look

RAISED PANEL



15"
WIDTH

12"
WIDTH

LOUVERED PANEL



14"
WIDTH

12"
WIDTH

BOARD & BATTEN PANEL



4
PANEL

3
PANEL

CUSTOM SHUTTERS

Our custom shutters are tailored to the homeowners needs. The lengths are custom cut in ¼" increments upon ordering so they fit with any window!

- Raised Panel available widths: 12", 15", 16" and 18"
- Louvered Panel available widths: 9", 12", 15", 16", and 18"
- Combination Raised/Louvered Panel available widths: 12", 15", 16", and 18"
- All custom shutters can be ordered in ¼" length increments
- Custom shutters can be completed fast and accurate, allowing a ten day lead time



SHUTTER COLORS



WHITE



GREY



GREEN



INDIGO BLUE



PINE



RED



ROYAL



SANDSTONE



BERRY



BLACK



BLUE



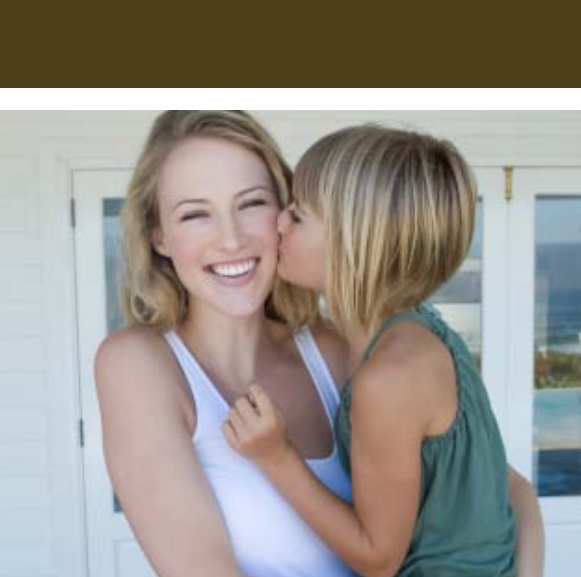
BROWN



CHOCOLATE



CRANBERRY



LINEALS

Accent your windows and doors with these stylish trim pieces in colors that perfectly match your Style Crest® siding.



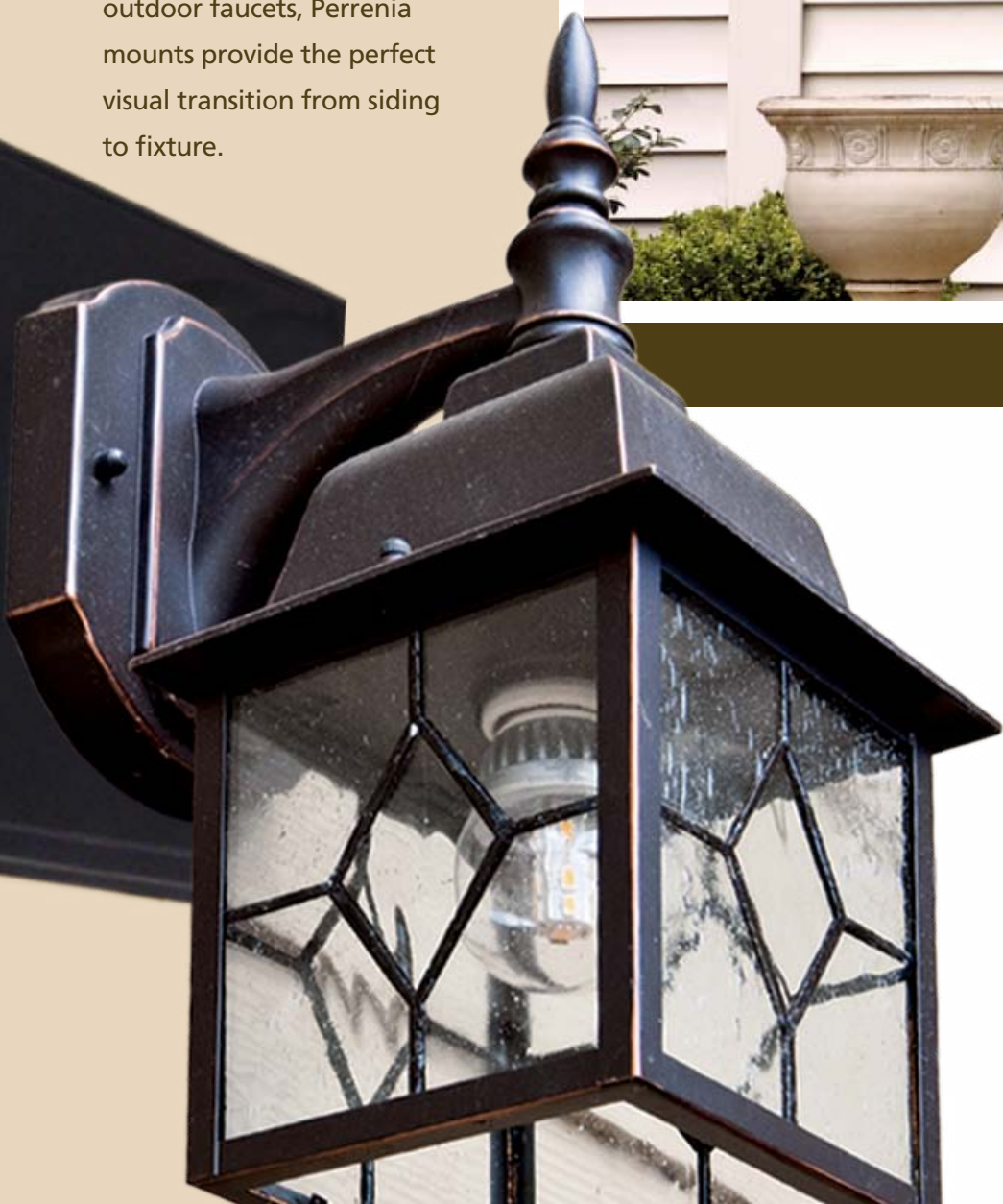
FEATURES

- Starter strip not required, when used with pre-J Channeled windows - saves on material and installation time
- 3½" or 5" wide lineals
- Foam insert available for both widths
- 12' 6" length allows for large window applications
- Available in nine color options - exact matched to Style Crest® siding
- Competitively priced - compared to other window trim



MOUNTS

For a wide range of applications from lighting to electrical to outdoor faucets, Perrenia mounts provide the perfect visual transition from siding to fixture.



FEATURES

- Ideal for new construction or remodeling
- Wide selection to accommodate many applications
- Easy installation with vinyl siding
- Available in a wide array of colors - exactly matching Style Crest® siding or siding from other manufacturers
- Color-through process resists fading and hides scratches
- Weather-resistant polymer won't fade, peel or flake



ELECTRICAL MOUNTS

- Electrical code approved mounting block ensures proper installation of light fixtures and electrical receptacles
- Keeps wires safely hidden to protect your home and provides a beautiful, clean, finished look
- Virtually airtight electrical box is self-contained inside mount to seal off the wiring from the elements
- Quick and easy installation
- Adjusts from $\frac{3}{4}$ " to $1\frac{1}{4}$ "

Patent #6,723,921 and 6,825,414



TYPICAL INSTALLATIONS FOR ELECTRICAL MOUNTS

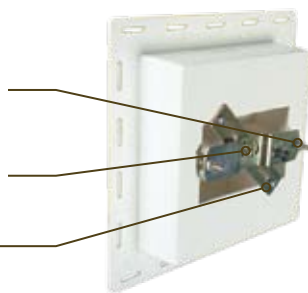
LIGHT FIXTURE

Clearance holes under fixture screws to eliminate binding of screws

Light fixture bracket shown supplied with light fixture

Bracket mounting holes

No special screws required. Simply use screws that are supplied with light fixture.



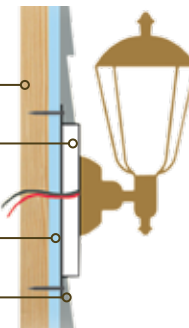
NEW CONSTRUCTION

Stud

Electrical Mount
(no electrical box required)

Insulation Board

Siding



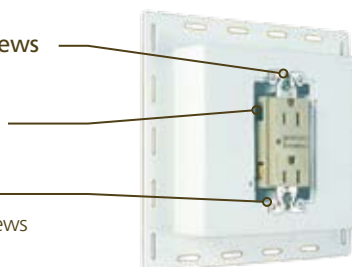
ELECTRICAL RECEPTACLE

Clearance holes for cover plate screws

e-Mount body is deep enough to allow for GFI receptacles

Mounting holes for receptacles

No special screws required. Simply use screws that are supplied with light fixture.



REMODELING

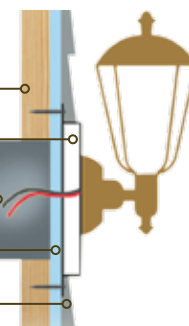
Stud

Electrical Mount

Old Electrical Box

Insulation Board

Siding





MINI MOUNT

- Used for mounting door bell buttons, receptacles or any other small items



RECESSED MINI MOUNT

- Factory pre-cut for easy mounting of receptacles



COACH COVER

- Snaps easily over Electrical Mounts to enlarge the surface for coach light fixtures



LARGE STANDARD MOUNT

- For mounting large light fixtures, house address numbers, gang electric boxes and other items too large for a regular size mount



FLUSH MOUNT

- For mounting light fixtures/receptacles after siding has been installed
- Fits on top of Double 4" and Double 5" lap siding



STANDARD MOUNT

- For mounting light fixtures, receptacles and faucets
- To be used in conjunction with an electrically approved box



METER BASE MOUNT

- For mounting meter bases, hose reels and other larger items
- Offset flange allows the ability to stack meter bases next to each other for gang meters



RECESSED SPLIT MOUNT

- Splits apart and fits around existing water faucets/receptacles, sealing the area and creating a clean finish
- Larger than standard, providing more room for clear turning of faucets



RECESSED COVER

- Fits easily over Recessed Split Mount with a push snap to protect from the elements
- Foam lining provides extra protection
- Comes in black only, to absorb the heat of the sun



CORNER POSTS

Our wide 5½" corner posts, available in two profiles and a variety of colors, add a grand distinction to your home.



FEATURES

- Stately 5½" wide design
- Fluted and Traditional profiles
- Available in white and other popular colors for traditional profile, white only for fluted
- 20' length - for minimal vertical joints
- Vinyl with foam insert offers impact resistance, added rigidity and helps retain shape - assuring the corners stay true for years to come



VENTS

Proper ventilation for a home has many advantages including energy efficiency and with Perrenia, it becomes an opportunity for design.



FEATURES

- Available in a wide range of colors - exactly matching Style Crest® vinyl siding colors
- Color-through process resists fading and hides scratches
- Weather-resistant polymer won't fade, peel or flake
- Virtually maintenance-free



HALF ROUND



ROUND



OCTAGON



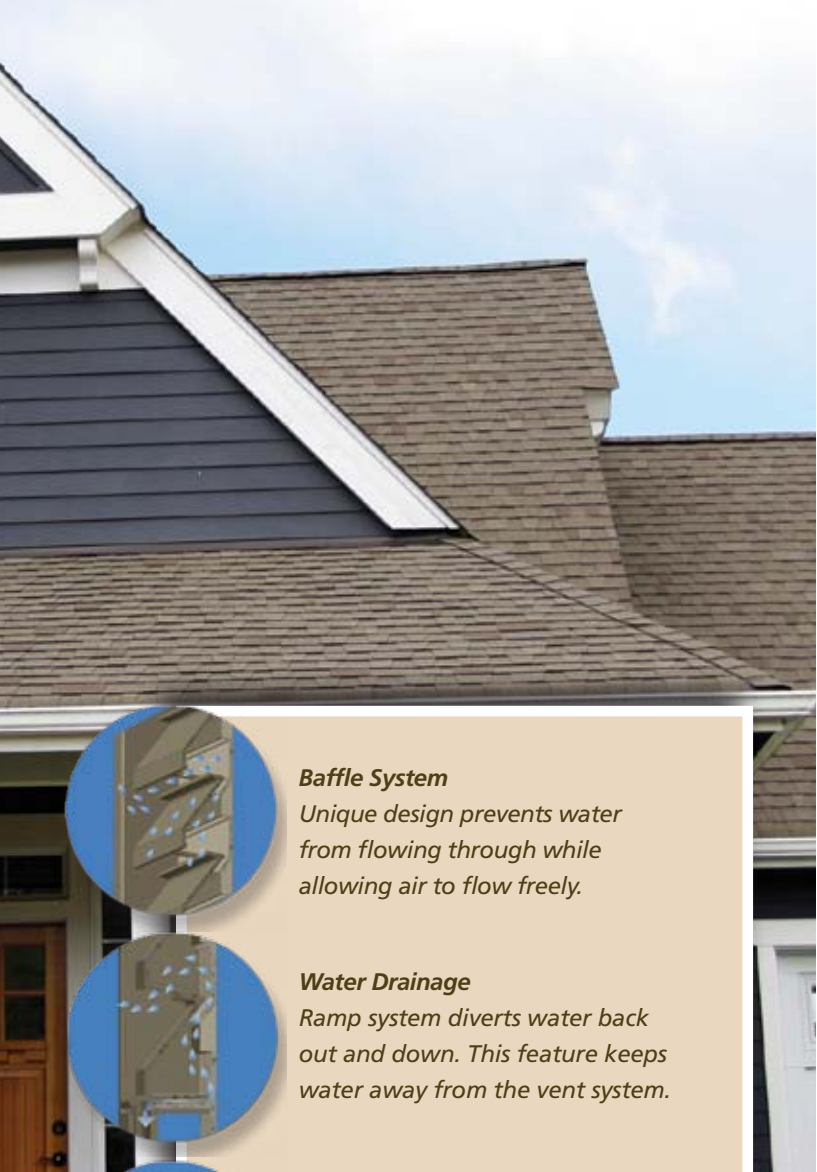
ROUND TOP



SQUARE



VERTICAL



Baffle System

Unique design prevents water from flowing through while allowing air to flow freely.



Water Drainage

Ramp system diverts water back out and down. This feature keeps water away from the vent system.



Screen System

Tough molded-in screen system won't tear like conventional screens. Bugs can't eat through, birds can't tear it.



SOFFIT VENT KIT (combination vent)

1. 4"-3" reducer for added installation flexibility
2. Durable face mount secures complete vent assembly in place
3. Built-in grids to keep birds and rodents out
4. Cover snaps on and off easily for quick installation and cleaning



HOODED EXHAUST VENT

- Unique paddle wheel design discourages birds and rodents from entering vent and helps reduce lint build-up
- Inner flap is recessed into base when dryer is turned off, further discouraging bird and rodent entry
- Cover snaps on and off easily for quick installation and lint removal*



EXHAUST VENT KIT

- Low profile bathroom/dryer exhaust vent
- Built-in grids to keep birds and rodents out
- Cover snaps on and off easily for quick installation and lint removal*
- 8" aluminum tubes included

** Like all bathroom/dryer vents, periodically inspect and clean for optimum performance.*



HALF-ROUNDS

Whether used on a dome or gable our scalloped accents provide eye-catching detail areas that compliment horizontal siding. Durable vinyl construction makes them virtually maintenance free.



FEATURES

- Low cost and easy to install
- Virtually maintenance free - never needs painting
- Beautiful, clean white color throughout the panel
- No scratching, peeling or fading
- Dimensions - 10" x 32"
- 22 panels - 33 sq. ft. per carton



BENEFITS



Nailing Channel

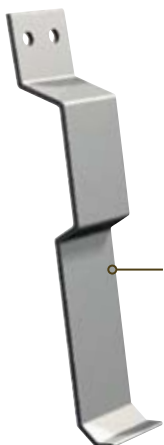


Structural rib for extra protection and stability against warping and distortion



All exposed surfaces feature a deep wood grained texture for a natural wood appearance and nice shadow lines.

Superior interlocking system that engage easily for faster and easier installation. Designed and tested to withstand hurricane windload.



An architecturally correct lock is obtained with our unique starter clips that allow installation without using J-channels at the intersection of other siding material.



Style Crest®, Inc. • 2450 Enterprise Street
Fremont, Ohio 43420
www.stylecrestinc.com

Specifications subject to change without notice.

Color representations shown may vary slightly from actual product color.

Made in the U.S.A. by America's Dedicated Workforce



Printed in the U.S.A.

© Copyright 2013 RH-0018 Perennia 16PG Brochure Rev 11/26