

# Earthquake!

INDUSTRIAL CONSTRUCTION

## VIBRATORS



**"NOTHING SHAKES LIKE AN EARTHQUAKE"**

## HEAVY DUTY ELECTRIC VIBRATORS



Toll Free 1-866-269-5743  
[www.earthquakeindustries.com](http://www.earthquakeindustries.com)



# Earthquake!

## VIBRATORS

NOTHING SHAKES LIKE AN EARTHQUAKE

### EQV - HEAVY DUTY ROTARY ELECTRIC VIBRATORS

- 2 poles single phase 3600 rpm




EQV-690-2  
SHOWN

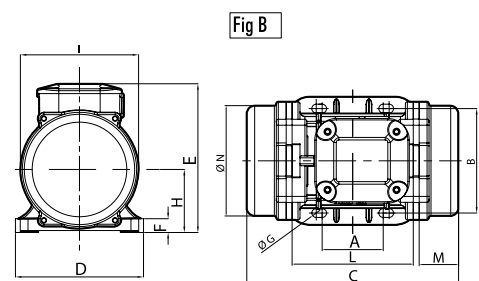
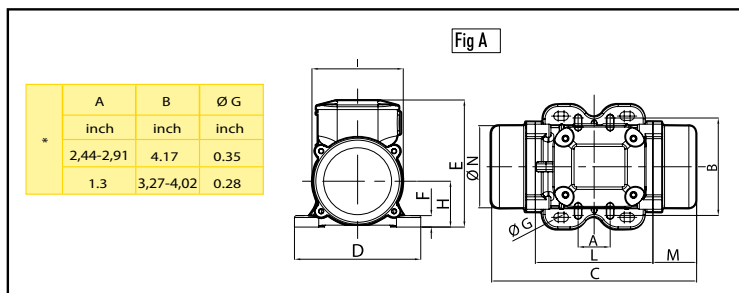
#### 2 POLE 3600 RPM (Think 2 pole 3600 RPM First!)

They are the most popular and multi-purpose vibrators. They are used on a wide assortment of applications like bins, hoppers, feeders, chutes, tables and for casting concrete. They effectively move materials that range from fine to granular. Examples include: **sugar, salt, gravel, dust, dirt, sand** and many more.

Suitable for standard 115V outlets

MODEL	Mechanical Specifications						Electric Specifications										
	Unbalance		Max Force		Weight		Power		A max (Y)						CAPACITOR		
	In*lbs		lbs		lbs		Hp				Class II Temp. Class	II3 D Temp. Class	50Hz		60Hz		
	50Hz	60Hz	50Hz	60Hz	50Hz	60Hz	50 Hz	60 Hz	50 Hz	60 Hz							
	50Hz	60Hz	50Hz	60Hz	50Hz	60Hz	230V	115V	(T)	(°C)							
EQV 160-2M	0.57	0.43	146	157	9		0.11	0.12	0.43	1.03	3.0	3.0	T4	100	M16	3 µF	6,3 µF
EQV 220-2M	0.85	0.57	216	209	10		0.13	0.15	0.54	1.3	3.0	3.0	T4	100	M16	4 µF	8 µF
EQV 440-2M	1.61	1.13	412	417	15		0.24	0.28	1.14	2.62	3,3	3.30	T4	100	M20	8 µF	16 µF
EQV 444-2M	1.61	1.13	412	417	16		0.24	0.28	1.14	2.62	3,3	3.30	T4	100	M20	8 µF	16 µF
EQV 690-2M	2.77	1.94	708	712	22		0.36	0.38	1.58	3.43	3.60	3.50	T4	100	M20	12,5 µF	25 µF

Note: Specifications subject to change without notice



# NOTHING SHAKES LIKE AN EARTHQUAKE

[WWW.EARTHQUAKEINDUSTRIES.COM](http://WWW.EARTHQUAKEINDUSTRIES.COM)



Ex



- Class II Div.2 Group F,G - T6 - NEMA 4 conform to UL 1836 and CSA C22.2 NO25

3600 RPM

115V



EQV-440-2

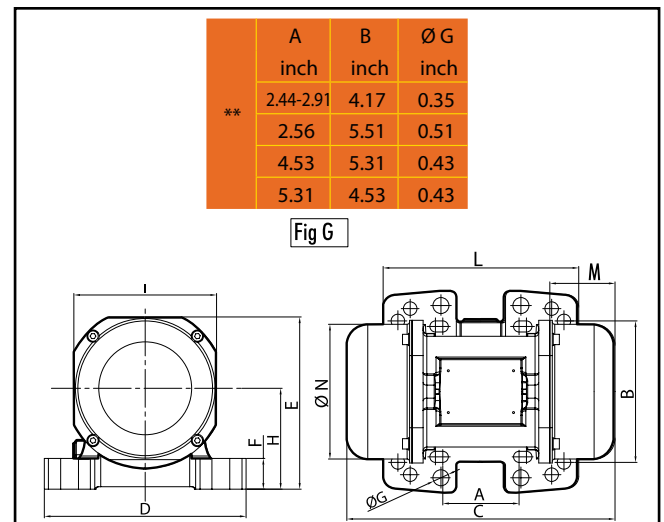
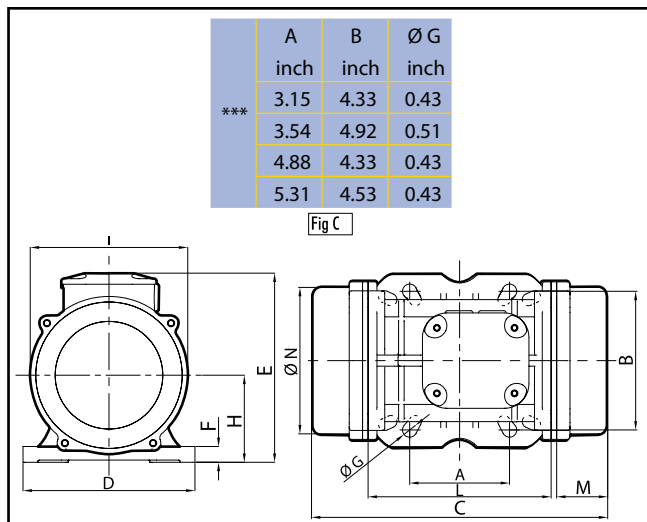


EQV-220-2

## Dimensional Specifications

MODEL	DRWG. REF	Size	C (inch)		M (inch)		A (inch)	B (inch)	Ø G (inch)	Holes n°	D (inch)	E (inch)	F (inch)	H (inch)	I (inch)	L (inch)	N (inch)
			50Hz	60Hz	50Hz	60Hz											
EQV 160-2M	A	10	8.31		1.77		*	*	*	4	5.12	5.35	0.47	1.89	3.70	4.76	3.35
EQV 220-2M	A	10	8.31		1.77		*	*	*	4	5.12	5.35	0.47	1.89	3.70	4.76	3.35
EQV 440-2M	B	20	8.62		1.61		62-74	106	9	4	5.16	6.26	0.59	2.52	4.76	4.84	4.41
EQV 444-2M	G	23	8.58		2.09		**	**	**	4	6.46	5.51	0.98	3.23	4.57	6.26	4.33
EQV 690-2M	C	30	10.24		1.69		***	***	***	4	6.06	6.89	0.59	3.11	5.59	6.42	5.16

NOTE: Specification subject to change without notice



# Earthquake!

## VIBRATORS

NOTHING SHAKES LIKE AN EARTHQUAKE

### EQV - HEAVY DUTY ROTARY ELECTRIC VIBRATORS

- 2 poles, 3 phases 3600 rpm



EQV-2300-2

#### 2 POLE 3600 RPM (Think 2 pole 3600 RPM First!)

They are the most popular and multi-purpose vibrators. They are used on a wide assortment of applications like bins, hoppers, feeders, chutes, tables and for casting concrete. They effectively move materials that range from fine to granular. Examples include: **sugar, salt, gravel, dust, dirt, sand** and many more.

575 V  
Available

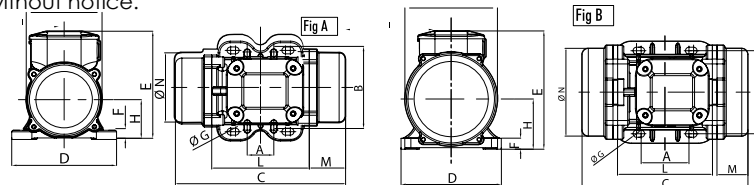
MODEL	Mechanical Features						Electric Features							
	Unbalance In*lbs		Max Force lbs		Weight lbs		Power Hp		Amps max (Y)		Ia/In		Class II Div.2	Ex
	50Hz	60Hz	50Hz	60Hz	50Hz	60Hz	50Hz	60Hz	50Hz	60Hz	50Hz	60Hz	Temp. Class (T)	Temp. Class (°C)
EQV 160/2	0.57	0.43	146	157	9		0.35	0.12	0.16	0.18	3.0	3.0	T4	100
EQV 220/2	0.85	0.57	216	209	10		0.13	0.15	0.19	0.18	3.0	3.0	T4	100
EQV 440/2	1.61	1.13	412	417	15		0.24	0.28	0.35	0.35	3.3	3.30	T4	100
EQV 444/2	1.61	1.13	412	417	16		0.24	0.28	0.35	0.35	3.3	3.30	T4	100
EQV 690/2	2.77	1.94	708	712	22		0.36	0.38	0.52	0.45	3.60	3.50	T4	100
EQV 890/2	3.45	2.47	897	906	23		0.40	0.48	0.58	0.60	3.50	3.50	T4	100
EQV 1200/2	4.46	3.20	1168	1177	35		0.67	0.78	0.96	0.97	4.00	4.20	T4	100
EQV 1700/2	6.47	4.59	1671	1687	36		0.89	1.01	1.25	1.24	4.30	5.00	T4	100
EQV 1800/2	6.81	4.80	1750	1764	45		1.01	1.21	1.45	1.50	3.80	3.80	T4	100
EQV 2300/2	8.79	6.08	2216	2233	48		1.27	1.54	1.85	1.95	4.40	4.50	T4	100
EQV 3100/2	11.97	8.19	2987	3009	49		1.74	1.85	2.44	2.25	5.20	5.00	T4	100
EQV 3110/2	11.97	8.19	2987	3009	67		1.74	1.85	2.44	2.25	5.20	5.00	T4	100
EQV 3550/2	9.70	9.70	2476	3563	66		1.74	1.85	2.44	2.25	5.20	5.00	T4	100
EQV 3500/2	13.57	9.64	3530	3545	114	113	2.11	2.15	2.94	2.61	5.90	6.20	T4	135
EQV 4100/2	15.96	11.98	4469	4403	116	115	2.68	2.82	3.75	3.42	6.50	6.40	T4	135
EQV 5100/2	19.95	13.83	5075	5084	118	114	3.22	3.29	4.44	3.94	6.00	6.30	T4	135
EQV 7600/2	29.56	19.05	7169	7002	227	224	3.89	3.89	5.30	4.61	8.30	8.20	T4	135
EQV 8800/2	34.46	24.30	8891	8933	236	229	3.89	3.89	5.30	4.61	8.5	9.7	T4	135
EQV 11500/2	44.81	30.28	11043	11129	245	233	5.36	5.36	7.22	6.28	8.50	9.80	T4	135

MODEL	Mechanical Features						Electric Features							
	Unbalance In*lbs		Max Force lbs		Weight lbs		Power Hp		Amps max (Y)		Ia/In		Class II Div.2	Ex
	50Hz	60Hz	50Hz	60Hz	50Hz	60Hz	50Hz	60Hz	50Hz	60Hz	50Hz	60Hz	Temp. Class (T)	Temp. Class (°C)
EQV 14400/2	56.23	39.30	14352	14445	504	506	7.38	7.38	9.5	8	4.20	5.30	T4	135
EQV 20100/2	77.95	56.23	19897	20668	530	517	13.41	12.47	14.00	18.00	5.00	5.00	T4	135

Note: Specifications subject to change without notice.

A	B	ØG
inch	inch	inch
2.44-2.91	4.17	0.35
1.3	3.27-4.02	0.28



# NOTHING SHAKES LIKE AN EARTHQUAKE

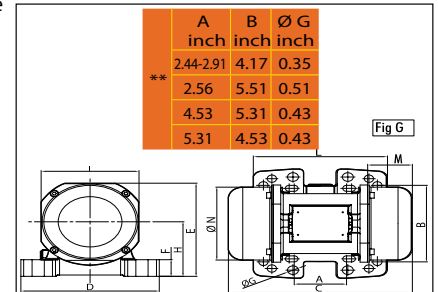
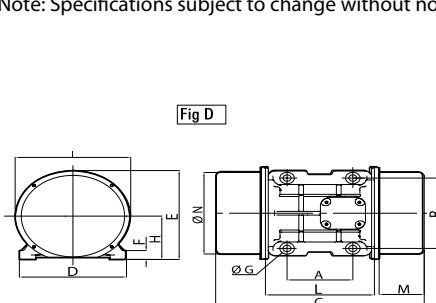
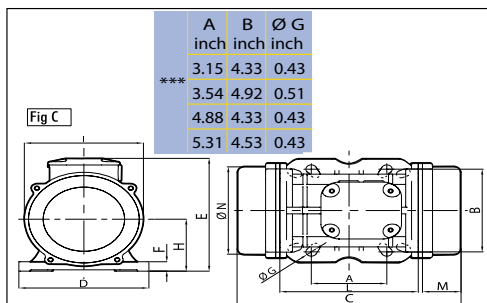
[WWW.EARTHQUAKEINDUSTRIES.COM](http://WWW.EARTHQUAKEINDUSTRIES.COM)



- Class II Div.2 Group F,G - T6 - NEMA 4 conform to UL 1836 and CSA C22.2 NO25

MODEL	Dimensional Features																
	DRWG. REF	Size	C		M		A	B	Ø G	Holes	D	E	F	H	I	L	N
			(inch)		(inch)		(inch)	(inch)	(inch)	n°	(inch)	(inch)	(inch)	(inch)	(inch)	(inch)	(inch)
			50Hz	60Hz	50Hz	60Hz											
EQV 160/2	A	10	8.31		1.77		*	*	*	4	5.12	5.35	0.47	1.89	3.70	4.76	3.35
EQV 220/2	A	10	8.31		1.77		*	*	*	4	5.12	5.35	0.47	1.89	3.70	4.76	3.35
EQV 440/2	B	20	8.62		1.61		2.44-2.91	4.17	0.35	4	5.16	6.26	0.59	2.52	4.76	4.84	4.41
EQV 444/2	G	23	8.58		2.09		**	**	**	4	6.46	5.51	0.98	3.23	4.57	6.26	4.33
EQV 690/2	C	30	10.24		1.69		***	***	***	4	6.06	6.89	0.59	3.11	5.59	6.42	5.16
EQV 890/2	C	30	10.24		1.69		***	***	***	4	6.06	6.89	0.59	3.11	5.59	6.42	5.16
EQV 1200/2	D	40	13.31		2.95		4.13	5.51	0.51	4	6.61	7.72	0.87	3.62	6.65	7.01	6.22
EQV 1700/2	D	40	13.31		2.95		4.13	5.51	0.51	4	6.61	7.72	0.87	3.62	6.65	7.01	6.22
EQV 1800/2	D	50	12.24		1.85		4.72	6.69	0.67	4	8.19	8.27	0.87	3.70	7.09	8.07	6.69
EQV 2300/2	D	50	12.24		1.85		4.72	6.69	0.67	4	8.19	8.27	0.87	3.70	7.09	8.07	6.69
EQV 3100/2	D	50	12.64		1.85		4.72	6.69	0.67	4	8.19	8.27	0.87	3.70	7.09	8.07	6.69
EQV 3110/2	D	53	12.64		1.85		3.94	7.09	0.67	4	9.29	8.27	1.02	3.86	7.09	8.07	6.69
EQV 3550/2	D	55	12.64		1.85		3.94	7.87	0.67	4	9.29	8.27	1.02	3.86	7.09	8.07	6.69
EQV 3500/2	D	60	16.46		3.27		5.51	7.48	0.67	4	9.02	9.72	1.18	4.72	9.72	8.66	8.74
EQV 4100/2	D	60	16.46		3.27		5.51	7.48	0.67	4	9.02	9.72	1.18	4.72	9.72	8.66	8.74
EQV 5100/2	D	60	16.46		3.27		5.51	7.48	0.67	4	9.02	9.72	1.18	4.72	9.72	8.66	8.74
EQV 7600/2	D	75	21.18		4.53		6.10	10.04	0.98	4	11.89	12.52	1.38	5.79	11.61	10.75	10.39
EQV 8800/2	D	75	21.18		4.53		6.10	10.04	0.98	4	11.89	12.52	1.38	5.79	11.61	10.75	10.39
EQV 11500/2	D	75	23.15	21.18	5.51	4.53	6.10	10.04	0.98	4	11.89	12.52	1.38	5.79	11.61	10.75	10.39
MODEL	Dimensional Features																
	DRWG. REF	Size	C		M		A	B	Ø G	Holes	D	E	F	H	I	L	N
			(inch)		(inch)		(inch)	(inch)	(inch)	n°	(inch)	(inch)	(inch)	(inch)	(inch)	(inch)	(inch)
			50Hz	60Hz	50Hz	60Hz											
EQV 14400/2	D	85	23.82		4.72		7.87	12.60	1.10	4	15.16	16.14	1.93	7.83	16.57	12.8	14.88
EQV 20100/2	D	85	23.82		4.72		7.87	12.60	1.10	4	15.16	16.14	1.93	7.83	16.57	12.8	14.88

Note: Specifications subject to change without notice



# Earthquake!

## VIBRATORS

NOTHING SHAKES LIKE AN EARTHQUAKE

### EQV - HEAVY DUTY ROTARY ELECTRIC VIBRATORS



- 4 poles Three phases 1800 rpm





Model  
EQV-1530-4

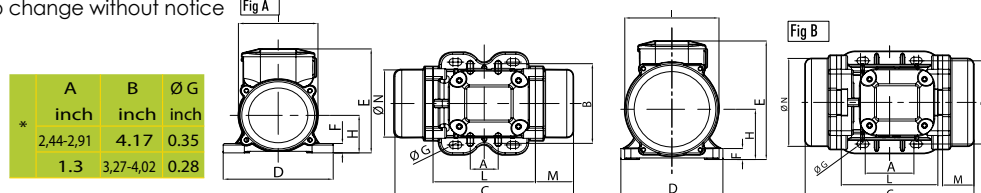
**4 POLE 1800 RPM** (Screens...think 4 pole 1800 RPM) These vibrators are commonly used on materials that are lumpier in nature. Therefore they make a great screen vibrator. Examples of materials that would require this style of vibrators are woodchips and coffee beans.

575 V  
Available

MODEL	Mechanical Features						Electric Features								
	Unbalance		Max Force		Weight		Power		Amps max (Y)		Ia/In				Cable
	In*lbs		lbs		lbs		Hp						Temp. Class	Temp. Class	
	50Hz	60Hz	50Hz	60Hz	50Hz	60Hz	50Hz	60Hz	50Hz	60Hz	50Hz	60Hz	(T)	(°C)	
400V	460V														
EQV 70/4	0.92	0.64	60	60	10		0.05	0.07	0.31	0.31	1.00	1.00	T4	100	M16
EQV 200/4	2.59	1.82	165	168	16		0.12	0.13	0.26	0.25	1.00	1.00	T4	100	M20
EQV 400/4	6.70	4.70	428	432	26		0.21	0.23	0.49	0.50	1.00	1.00	T4	100	M20
EQV 860/4	14.51	10.15	926	933	43		0.40	0.47	0.84	0.86	2.50	2.50	T4	100	M20
EQV 1150/4	17.41	12.19	1111	1120	46		0.47	0.54	1.06	1.09	2.80	2.70	T4	100	M20
EQV 750/4	11.54	8.07	736	741	50		0.83	0.98	1.32	1.41	3.00	3.20	T4	100	M20
EQV 1530/4	24.67	17.08	1574	1570	60		0.83	0.98	1.32	1.41	3.00	3.20	T4	100	M20
EQV 2300/4	38.49	26.92	2456	2474	79		0.87	1.05	1.50	1.70	3.80	3.80	T4	100	M20
EQV 3100/4	47.12	33.30	3007	3060	132	128	1.21	1.48	1.71	1.78	4.00	4.00	T4	135	M25
EQV 3880/4	59.59	39.92	3803	3668	136	131	1.54	1.74	2.16	2.09	4.70	4.50	T4	135	M25
EQV 5340/4	81.46	59.62	5198	5478	150	137	2.15	2.55	3.00	3.20	4.90	4.90	T4	135	M25
EQV 5700/4	88.34	58.87	5637	5410	198	185	2.41	2.68	3.40	3.40	6.00	6.10	T4	135	M25
EQV 6840/4	107.93	73.68	6887	6770	215	192	2.55	3.08	3.70	3.80	6.50	6.60	T4	135	M25
EQV 8400/4	133.11	88.86	8494	8166	287	261	2.95	3.49	4.12	4.15	6.80	6.80	T4	135	M32
EQV 9480/4	148.97	104.58	9506	9610	296	272	3.35	4.02	5.70	5.80	7.00	7.20	T4	135	M32
EQV 12260/4	189.84	131.83	12114	12114	424	419	4.83	4.63	6.50	6.60	7.10	7.00	T4	135	M32

MODEL	Mechanical Features						Electric Features								
	Unbalance		Max Force		Weight		Power		Amps max (Y)		Ia/In				Cable
	In*lbs		lbs		lbs		Hp						Temp. Class	Temp. Class	
	50Hz	60Hz	50Hz	60Hz	50Hz	60Hz	50Hz	60Hz	50Hz	60Hz	50Hz	60Hz	(T)	(°C)	
400V	460V														
EQV 15850/4	250.33	172.45	15975	15847	558	544	6.71	8.05	9.60	9.41	6.80	6.90	T4	135	M32
EQV 19800/4	311.62	216.47	19885	19892	592	568	10.06	11.40	12.00	12.00	7.00	7.00	T4	135	M32
EQV 21000/4	347.27	255.34	22161	23464	687	656	10.46	12.61	13.00	13.00	6.50	6.40	T4	135	M32

Note: Specifications subject to change without notice





# NOTHING SHAKES LIKE AN EARTHQUAKE

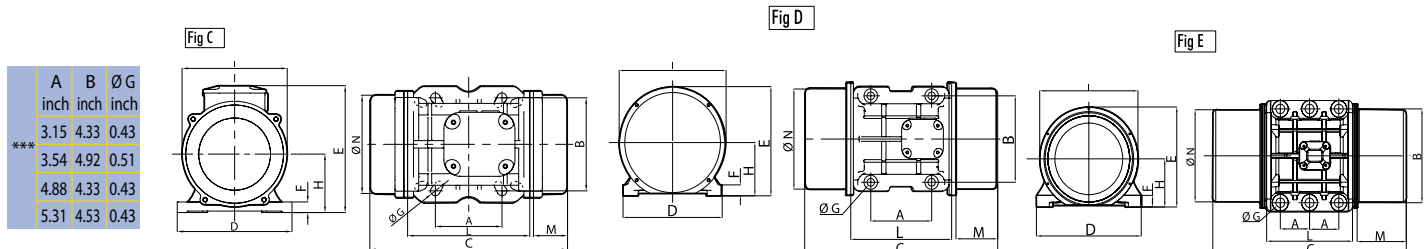
[WWW.EARTHQUAKEINDUSTRIES.COM](http://WWW.EARTHQUAKEINDUSTRIES.COM)



ETL - Class II Div.2 Group F,G - T6 - NEMA 4 conform to UL 1836 and CSA C22.2 NO25

MODEL	Dimensional Features																
	DRWG. REF	Size	C		M		A	B	Ø G	Holes	D	E	F	H	I	L	N
			(inch)		(inch)		(inch)	(inch)	(inch)	n°	(inch)	(inch)	(inch)	(inch)	(inch)	(inch)	(inch)
			50Hz	60Hz	50Hz	60Hz											
EQV 70/4	A	10	8.31		1.77		*	*	*	4	5.12	5.35	0.47	1.89	3.70	4.76	3.35
EQV 200/4	B	20	8.62		1.61		2.44-2.91	4.17	0.35	4	5.16	6.26	0.59	2.52	4.76	4.84	4.41
EQV 400/4	C	30	10.24		1.69		***	***	***	4	6.06	6.89	0.59	3.11	5.59	6.42	5.16
EQV 860/4	D	40	13.31		2.95		4.13	5.51	0.51	4	6.61	7.72	0.87	3.62	6.65	7.01	6.22
EQV 1150/4	D	40	13.31		2.95		4.13	5.51	0.51	4	6.61	7.72	0.87	3.62	6.65	7.01	6.22
EQV 750/4	D	50	12.24		1.85		4.72	6.69	0.67	4	8.19	8.27	0.87	3.70	7.09	8.07	6.69
EQV 1530/4	D	50	15.63		3.54		4.72	6.69	0.67	4	8.19	8.27	0.87	3.70	7.09	8.07	6.69
EQV 2300/4	D	50	17.76		4.41		4.72	6.69	0.67	4	8.19	8.27	0.87	3.70	7.09	8.07	6.69
EQV 3100/4	D	60	17.64		3.86		5.51	7.48	0.67	4	9.02	9.72	1.18	4.72	9.72	8.66	8.74
EQV 3880/4	D	60	17.64		3.86		5.51	7.48	0.67	4	9.02	9.72	1.18	4.72	9.72	8.66	8.74
EQV 5340/4	D	60	20.08	17.64	5.08	3.86	5.51	7.48	0.67	4	9.02	9.72	1.18	4.72	9.72	8.66	8.74
EQV 5700/4	D	70	20.55	19.13	4.84	4.13	6.10	8.86	0.87	4	10.71	11.18	1.57	5.51	10.51	9.84	9.25
EQV 6840/4	D	70	20.55	19.13	4.84	4.13	6.10	8.86	0.87	4	10.71	11.18	1.57	5.51	10.51	9.84	9.25
EQV 8400/4	D	75	23.15	21.18	5.51	4.53	6.10	10.04	0.93	4	11.89	12.52	1.38	5.79	11.61	10.75	10.39
EQV 9480/4	D	75	23.15		5.51		6.10	10.04	0.93	4	11.89	12.52	1.38	5.79	11.61	10.75	10.39
EQV 12260/4	D	80	23.74		5.12		7.09	11.02	1.02	4	13.07	14.17	1.46	6.57	13.58	11.97	12.20
MODEL	Dimensional Features																
	DRWG. REF	Size	C		M		A	B	Ø G	Holes	D	E	F	H	I	L	N
			(inch)		(inch)		(inch)	(inch)	(inch)	n°	(inch)	(inch)	(inch)	(inch)	(inch)	(inch)	(inch)
			50Hz	60Hz	50Hz	60Hz											
EQV 15850/4	D	85	23.82		4.72		7.87	12.60	1.10	4	15.16	16.14	1.93	7.87	16.61	12.80	14.88
EQV 19800/4	D	85	23.82		4.72		7.87	12.60	1.10	4	15.16	16.14	1.93	7.87	16.61	12.80	14.88
EQV 21000/4	E	90	28.58	25.43	6.30	4.72	4.92	14.96	1.50	6	17.80	16.93	1.73	8.03	16.61	14.45	14.88

Note: Specifications subject to change without notice



# Earthquake!

## VIBRATORS

NOTHING SHAKES LIKE AN EARTHQUAKE

### EQV - HEAVY DUTY ROTARY ELECTRIC VIBRATORS

- 6 poles, 3 phases 1200 rpm



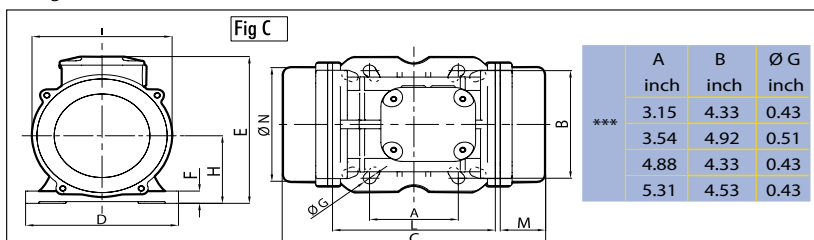
EQV-1600-6

**6 POLE 1200 RPM and 8 Pole 900 RPM** Not as common, these vibrators are used on light fluffy materials that require high force and high amplitude. They can also be very effective on screens.

575 V  
Available

MODEL	Mechanical Features						Electric Features								
	Unbalance In*lbs		Max Force lbs		Weight lbs		Power Hp		Amps max (Y)		Ia/In		Class II Div.2	II3 D	Cable Glande
	50Hz	60Hz	50Hz	60Hz	50Hz	60Hz	50Hz	60Hz	50Hz 400V	60Hz 460V	50Hz	60Hz	Temp. Class (T)	Temp. Class (°C)	
EQV 90/6	4.12	2.86	117	117	23		0.16	0.19	0.40	0.40	1.00	1.00	T4	100	M20
EQV 220/6	8.16	5.72	231	234	27		0.16	0.19	0.40	0.40	1.00	1.00	T4	100	M20
EQV 410/6	14.54	10.15	412	414	43		0.24	0.28	0.53	0.51	1.00	1.00	T4	100	M20
EQV 680/6	24.71	17.29	701	706	59		0.47	0.51	0.67	0.64	2.50	2.50	T4	100	M20
EQV 1100/6	39.88	27.92	1131	1140	75		0.47	0.54	1.20	1.15	2.80	2.70	T4	100	M20
EQV 1600/6	39.88	39.88	1131	1629	76		0.47	0.54	1.20	1.15	2.80	2.70	T4	100	M20
EQV 1730/6	59.62	47.13	1691	1925	136	131	0.91	1.02	1.29	1.26	2.80	2.80	T4	135	M25
EQV 2350/6	81.46	59.59	2310	2434	175	161	1.01	1.07	1.42	1.32	3.20	3.10	T4	135	M25
EQV 3090/6	123.59	85.29	3505	3483	184	169	1.48	1.74	2.10	2.00	3.30	3.30	T4	135	M25
EQV 3580/6	130.05	88.31	3688	3607	220	196	1.48	1.74	2.83	3.22	3.70	3.60	T4	135	M25
EQV 4740/6	161.92	107.96	4592	4409	252	222	2.01	2.41	3.00	3.00	4.30	4.40	T4	135	M25
EQV 5690/6	202.88	133.12	5754	5437	328	290	2.63	2.82	3.63	3.38	4.80	4.80	T4	135	M32
EQV 6620/6	234.52	164.80	6651	6731	343	304	2.95	3.22	4.50	4.30	5.00	5.00	T4	135	M32
EQV 8450/6	295.30	189.85	8375	7754	475	429	3.35	4.02	4.67	4.88	5.90	6.00	T4	135	M32
EQV 10370/6	363.86	253.55	10320	10355	509	468	4.29	5.23	6.50	6.00	5.50	5.70	T4	135	M32
EQV 11500/6	403.58	284.10	11446	11603	617	582	5.10	5.36	6.92	6.36	5.50	5.50	T4	135	M32
EQV14360/6	505.72	357.62	14343	14605	671	619	5.77	6.71	7.76	7.81	6.20	6.00	T4	135	M32
MODEL	Mechanical Features						Electric Features								
	Unbalance In*lbs		Max Force lbs		Weight lbs		Power Hp		Amps max (Y)		Ia/In		Class II Div.2	II3 D	Cable Glande
	50Hz	60Hz	50Hz	60Hz	50Hz	60Hz	50Hz	60Hz	50Hz 400V	60Hz 460V	50Hz	60Hz	Temp. Class (T)	Temp. Class (°C)	
EQV 17750/6	623.26	403.56	17676	16482	717	639	9.52	10.06	12.60	11.60	6.00	6.20	T4	135	M32
EQV 19120/6	694.61	505.74	19700	20655	745	678	10.06	11.13	13.20	12.60	6.30	6.20	T4	135	M32
EQV 21400/6	776.23	538.19	22015	21980	851	792	10.19	10.73	13.50	12.70	6.40	6.40	T4	135	M32
EQV 28660/6	1011.22	715.03	28680	29202	931	828	13.41	13.41	17.00	16.00	6.20	6.2	T4	135	M32

Note: Specifications subject to change without notice





# NOTHING SHAKES LIKE AN EARTHQUAKE

[WWW.EARTHQUAKEINDUSTRIES.COM](http://WWW.EARTHQUAKEINDUSTRIES.COM)



- Class II Div.2 Group F,G - T6 - NEMA 4 conform to UL 1836 and CSA C22.2 NO25

MODEL	Dimensional Features																
	DRWG. REF	Size	C		M		A	B	Ø G	Holes	D	E	F	H	I	L	N
			(inch)		(inch)		(inch)	(inch)	(inch)	n°	(inch)	(inch)	(inch)	(inch)	(inch)	(inch)	(inch)
			50Hz	60Hz	50Hz	60Hz											
EQV 90/6	C	30	10.24		1.69		***	***	***	4	6.06	6.89	0.59	3.11	5.59	6.42	5.16
EQV 220/6	C	30	11.81		2.48		***	***	***	4	6.06	6.89	0.59	3.11	5.59	6.42	5.16
EQV 410/6	D	40	13.31		2.95		4.13	5.51	0.51	4	6.61	7.72	0.87	3.62	6.65	7.01	6.22
EQV 680/6	D	50	15.63		3.54		4.72	6.69	0.67	4	8.19	8.27	0.87	3.70	7.09	8.07	6.69
EQV 1100/6	D	50	17.36		4.41		4.72	6.69	0.67	4	8.19	8.27	0.87	3.70	7.09	8.07	6.69
EQV 1600/6	D	50	17.76		4.41		4.72	6.69	0.67	4	8.19	8.27	0.87	3.70	7.09	8.07	6.69
EQV 1730/6	D	60	17.64		3.86		5.51	7.48	0.67	4	9.02	9.72	1.18	4.72	9.72	8.66	8.74
EQV 2350/6	D	60	20.08	17.64	5.08	3.86	5.51	7.48	0.67	4	9.02	9.72	1.18	4.72	9.72	8.66	8.74
EQV 3090/6	D	60	22.13	20.08	6.06	5.08	5.51	7.48	0.67	4	9.02	9.72	1.18	4.72	9.72	8.66	8.74
EQV 3580/6	D	70	21.89	20.55	5.51	4.84	6.10	8.86	0.87	4	10.71	11.18	1.57	5.51	10.51	9.84	9.25
EQV 4740/6	D	70	24.25	20.55	6.69	4.84	6.10	8.86	0.87	4	10.71	11.18	1.57	5.51	10.51	9.84	9.25
EQV 5690/6	D	75	27.87	23.15	7.87	5.51	6.10	10.04	0.93	4	11.89	12.52	1.38	5.79	11.61	10.75	10.39
EQV 6620/6	D	75	27.87	23.94	7.87	5.91	6.10	10.04	0.93	4	11.89	12.52	1.38	5.79	11.61	10.75	10.39
EQV 8450/6	D	80	26.89	23.74	6.69	5.12	7.09	11.02	1.02	4	13.07	14.17	1.46	6.57	13.58	11.97	12.20
EQV 10370/6	D	80	28.86	26.89	7.68	6.69	7.09	11.02	1.02	4	13.07	14.17	1.46	6.57	13.58	11.97	12.20
EQV 11500/6	D	85	26.97	23.82	6.30	4.72	7.87	12.60	1.10	4	15.16	16.14	1.93	7.87	16.61	12.80	14.88
EQV 14360/6	D	85	26.97		6.30		7.87	12.60	1.10	4	15.16	16.14	1.93	7.87	16.61	12.80	14.88
MODEL	Dimensional Features																
	DRWG. REF	Size	C		M		A	B	Ø G	Holes	D	E	F	H	I	L	N
			(inch)		(inch)		(inch)	(inch)	(inch)	n°	(inch)	(inch)	(inch)	(inch)	(inch)	(inch)	(inch)
			50Hz	60Hz	50Hz	60Hz											
EQV 17750/6	D	85	30.91	26.97	8.27	6.30	7.87	12.60	1.10	4	15.16	16.14	1.93	7.87	16.61	12.80	14.88
EQV 19120/6	D	85	30.91	26.97	8.27	6.30	7.87	12.60	1.10	4	15.16	16.14	1.93	7.87	16.61	12.80	14.88
EQV 21400/6	E	90	32.52		8.27		4.92	14.96	1.50	6	17.80	16.93	1.73	8.03	16.61	14.45	14.88
EQV 28660/6	E	90	36.46	32.52	10.24	8.27	4.92	14.96	1.50	6	17.80	16.93	1.73	8.03	16.61	14.45	14.88

Note: Specifications subject to change without notice

Note: Dimensions with coarse degree of accuracy related to UNI 22768/1

Fig D

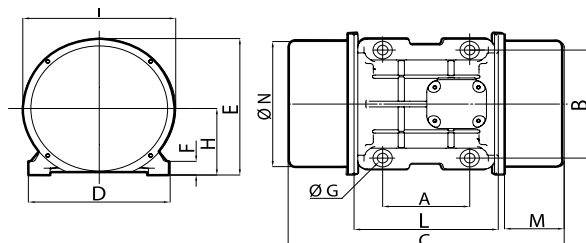
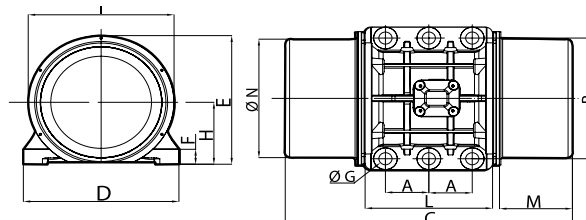


Fig E



# Earthquake!

## VIBRATORS

NOTHING SHAKES LIKE AN EARTHQUAKE

### EQV - HEAVY DUTY ROTARY ELECTRIC VIBRATORS





- 8 poles, Three Phases 900 rpm



EQV-2000-8

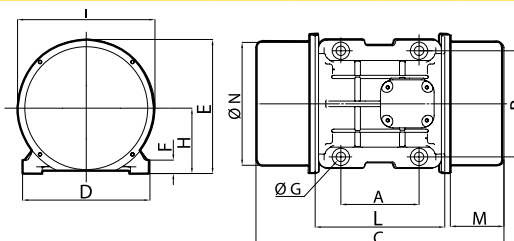
**6 POLE 1200 RPM and 8 Pole 900 RPM** Not as common, these vibrators are used on light fluffy materials that require high force and high amplitude. They can also be very effective on screens.

575 V  
Available

MODEL	Mechanical Features			Electric Features								
	Unbalance In*lbs 50Hz - 60Hz	Max Force lbs 50Hz - 60Hz	Weight lbs 50Hz - 60Hz	Power Hp		Amps max (Y)		Ia/In				Cable
										Class II Div.2	II3 D	
				Temp. Class	Temp. Class							
(T)	(°C)											
EQV 330/8	14.49	333	47	0.31	0.34	1.14	1.14	1.50	1.50	T4	100	M20
EQV 550/8	24.71	567	65	0.47	0.51	1.15	1.15	1.70	1.70	T4	100	M20
EQV 880/8	36.47	838	77	0.47	0.51	1.15	1.15	1.90	1.90	T4	100	M20
EQV 1430/8	59.60	1369	143	0.67	0.80	1.20	1.20	2.20	2.20	T4	135	M25
EQV 2000/8	81.48	1872	157	0.87	1.05	1.23	1.29	2.50	2.50	T4	135	M25
EQV 2900/8	130.03	2987	220	1.34	1.48	1.86	1.83	3.00	3.00	T4	135	M25
EQV 4620/8	202.87	4661	332	2.01	2.41	2.81	2.89	4.20	4.10	T4	135	M32
EQV 6820/8	295.29	6784	468	2.68	3.08	3.79	3.77	4.00	4.00	T4	135	M32
EQV 8360/8	363.90	8360	507	3.35	4.02	6.00	6.00	3.90	4.00	T4	135	M32
EQV 9240/8	403.53	9270	627	3.89	4.56	6.50	6.50	3.80	3.70	T4	135	M32
EQV 11660/8	505.74	11618	672	5.36	5.77	8.50	8.00	3.80	4.20	T4	135	M32
EQV 14300/8	623.20	14317	715	6.71	7.91	10.00	10.00	3.60	4.00	T4	135	M32
MODEL	Mechanical Features			Electric Features								
	Unbalance In*lbs 50Hz - 60Hz	Max Force lbs 50Hz - 60Hz	Weight lbs 50Hz - 60Hz	Power Hp		Amps max (Y)		Ia/In				Cable
										Class II Div.2	II3 D	
				Temp. Class	Temp. Class							
(T)	(°C)											
EQV 22000/8	955.05	21940	931	9.12	10.06	13.50	12.5	3.5	4.2	T4	135	M32

Note: Specifications subject to change without notice

Fig D



# NOTHING SHAKES LIKE AN EARTHQUAKE

[WWW.EARTHQUAKEINDUSTRIES.COM](http://WWW.EARTHQUAKEINDUSTRIES.COM)

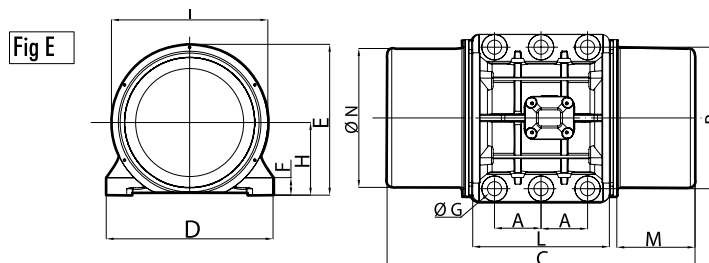


- Class II Div.2 Group F,G - T6 - NEMA 4 conform to UL 1836 and CSA C22.2 NO25

MODEL	Dimensional Features													
	DRWG. REF	Size	C (inch) 50Hz - 60Hz	M (inch) 50Hz - 60Hz	A	B	Ø G	Holes	D	E	H	I	L	N
					(inch)	(inch)	(inch)	n°	(inch)	(inch)	(inch)	(inch)	(inch)	(inch)
EQV 330/8	D	40	13.31	2.95	4.13	5.51	0.51	4	6.61	7.72	3.62	6.65	7.01	6.22
EQV 550/8	D	50	15.63	3.54	4.72	6.69	0.67	4	8.19	8.27	3.70	7.09	8.07	6.69
EQV 880/8	D	50	17.36	4.41	4.72	6.69	0.67	4	8.19	8.27	3.70	7.09	8.07	6.69
EQV 1430/8	D	60	17.64	3.86	5.51	7.48	0.67	4	9.02	9.72	4.72	9.72	8.66	8.74
EQV 2000/8	D	60	20.08	5.08	5.51	7.48	0.67	4	9.02	9.72	4.72	9.72	8.66	8.74
EQV 2900/8	D	70	21.89	5.51	6.10	8.86	0.87	4	10.71	11.18	5.51	10.51	9.84	9.25
EQV 4620/8	D	75	27.87	7.87	6.10	10.04	0.93	4	11.89	12.52	5.79	11.61	10.75	10.39
EQV 6820/8	D	80	26.89	6.69	7.09	11.02	1.02	4	13.07	14.17	6.57	13.58	11.97	12.20
EQV 8360/8	D	80	28.86	7.68	7.09	11.02	1.02	4	13.07	14.17	6.57	13.58	11.97	12.20
EQV 9240/8	D	85	26.97	6.30	7.87	12.60	1.10	4	15.16	16.14	7.83	16.61	12.80	14.88
EQV 11660/8	D	85	26.97	6.30	7.87	12.60	1.10	4	15.16	16.14	7.83	16.61	12.80	14.88
EQV 14300/8	D	85	30.91	8.27	7.87	12.60	1.10	4	15.16	16.14	7.83	16.61	12.80	14.88
MODEL	Dimensional Features													
	DRWG. REF	Size	C (inch) 50Hz - 60Hz	M (inch) 50Hz - 60Hz	A	B	Ø G	Holes	D	E	H	I	L	N
					(inch)	(inch)	(inch)	n°	(inch)	(inch)	(inch)	(inch)	(inch)	(inch)
EQV 22000/8	E	90	36.46	10.24	4.92	15	1.5	6	17.8	16.93	8.03	16.614	14.45	14.9

Note: Specifications subject to change without notice

Note: Dimensions with coarse degree of accuracy related to UNI 22768/1



# Earthquake!

INDUSTRIAL CONSTRUCTION

## ***VIBRATORS***

***“NOTHING SHAKES LIKE AN EARTHQUAKE”***

### **Industries Served By**

#### **Earthquake Vibrators:**

Agriculture  
Chemical  
Concrete  
Construction  
Decorative Concrete  
Electrical Plating and Electronics  
Feed and Grain  
Food and Beverage  
Foundry  
Industrial Manufacturing  
Lumber and Paper  
Mining  
Packaging  
Paint  
Pharmaceutical  
Power Plants  
Precast Concrete  
Railroads  
ReadyMix  
Sand, Gravel and Aggregates

### **Common Applications to look for:**

Bins  
Bowl Feeders  
Concrete Forms  
Chutes  
Concrete Pipe Forms  
Concrete Pump  
Concrete Screed  
Conveyor  
Dump Truck Body  
Dust Collector  
Feeder  
Filling Station  
Hopper  
Screens  
Ornamental Concrete Forms  
Screw Feeder  
Storage Silo  
Weigh Bin  
Plating Line



**Toll Free 1-866-269-5743**  
**[www.earthquakeindustries.com](http://www.earthquakeindustries.com)**

